



Charles D. Baker, Governor  
Karyn E. Polito, Lieutenant Governor  
Stephanie Pollack, Secretary & CEO  
Jonathan L. Gulliver, Highway Administrator



November 1, 2019

607673-109183

**ADDENDUM NO. 2**

To Prospective Bidders and Others on:

**WARREN**  
**Bridge Replacement Br. No. W-07-002 (Steel) Route 67 (Main Street) over  
the Quaboag River**

**BIDS TO BE OPENED AND READ:** **TUESDAY, NOVEMBER 5, 2019 at 2:00 P.M.**

Transmitting changes to the Contract Documents as follows:

**RESPONSES TO BIDDER'S QUESTIONS:** One page attached.

**DOCUMENT A00801:** Revised page 3.

**PLANS:** Revised Sheet No. 31 of 52.

Please take note of the above, substitute the revised pages for the originals, and acknowledge Addendum No. 2 in your Expedite Proposal file before submitting your bid.

Very truly yours,

Eric M. Cardone, P.E.  
Acting Construction Contracts Engineer

MB  
cc: Harry Adolphe, Project Manager

THIS PAGE IS INTENTIONALLY LEFT BLANK

**WARREN**

**Bridge Replacement Br. No. W-07-002 (Steel) Route 67 (Main Street) over  
the Quaboag River**

**Proposal No. 607673- 109183**

Responses to Bidder's Questions

Addendum No. 2, November 1, 2019

---

**E. T. & L. Corporation e-mail dated October 31, 2019**

Question 2) Sheet 31 of 52, Water Line, Typical Utility Details at Abutment, appears to show a pipe sleeve through the abutment, bending down and continuing to the end of the approach slab. It is not possible to install ductile iron water pipe inside a bent sleeve. Please clarify if the limits of the steel sleeve extend beyond the bends of the water pipe.

Response 2) Refer to the revised Plans, Sheet No. 31 of 52. The steel sleeve for the waterline can end prior to the bend so that it only extends through the abutment backwall and the end diaphragm.

Question 3) Sheet 26 of 52, proposed transverse section, is showing stay in place forms between B7 & B8. Please confirm that this bay requires removable forms as it is at the curb line.

Response 3) Since water will not flow towards and collect along the curb line over Beam B7, the use of SIP forms under this curb line is acceptable.

**\*\*THIS PAGE LEFT INTENTIONALLY BLANK\*\***

② Addendum No. 2, November 1, 2019

① Addendum No. 1, October 30, 2019

**CONTRACTOR QUESTIONS AND ADDENDUM ACKNOWLEDGEMENTS**

Prospective bidders are required to submit all questions to the Construction Contracts Engineer by 1:00 P.M. on the Thursday before the scheduled bid opening date. Any questions received after this time will not be considered for review by the Department.

Contractors should email questions and addendum acknowledgements to the following email address [massdotSpecifications@dot.state.ma.us](mailto:massdotSpecifications@dot.state.ma.us). The MassDOT project file number and municipality is to be placed in the subject line.

**CONTRACT AWARD AND NOTICE TO PROCEED PROCEDURES**  
**(Amending and Supplementing Subsections 3.03 and 3.05)**

The prepared Contract Package is to be completed in duplicate by the successful Bidder who shall execute and deliver the Contract Package and furnish the required surety to the Department. The date of the Contract shall be the date of the Bidder's signature and shall be typed on all forms by the successful Bidder. The Contract Package consists of the contract forms for execution all of which must be returned. These documents are available on [www.bidx.com](http://www.bidx.com). as a separate file.

The company's corporate seal should be affixed to both the Contract and bonds.

The Board of Director's Vote will indicate who is authorized to sign and execute the Contract and bonds and affix the corporate seal. The vote shall show that said vote is in full force and effect and has not been amended or rescinded. The vote of the board of directors should be dated the same date as indicated on the contract form and should bear the imprint of the company's corporate seal.

① **MATERIAL OPTIONS**

The Contractor shall inform the Engineer of his option prior to the installation of the material. Once the option is designated, all material for the option item(s) shall remain the same throughout the job.

	<u>OPTIONS</u>		
	<u>Item Description</u>	<u>Unit</u>	
②	234.18	18 Inch Drainage Pipe-Option	Foot

Pipe Options  
Reinforced Concrete Pipe  
Corrugated Plastic (Polyethylene) Pipe  
Corrugated Plastic (Polypropylene) Pipe

**PROVISIONS FOR TRAVEL AND PROSECUTION OF WORK**  
**(Supplementing Subsections 7.09, 7.10 and 8.03)**

The Contractor shall maintain traffic in accordance with the Traffic Management Plans and the Special Provisions.

Particular care shall be taken to establish and maintain such methods and procedures that will not create a hazard to public safety. Access to abutting properties shall be maintained in a reasonable manner for the duration of the construction period.

Demolition and removal of the existing bridge shall not begin until barricades and other warning signs are in place. The Contractor shall not implement the work until receiving approval from the Engineer. All shop drawings for each phase of work shall be approved prior to any traffic restrictions being imposed for that phase of the work.

The Contractor will notify the Warren Public Works Department, Police Department and Fire Department, in writing, at least two weeks before commencing work.

The Contractor is responsible for erecting and maintaining any additional signs that may be needed for the bridge and roadway reconstruction and remove them when they are no longer needed or as directed by the Engineer.

The Contractor shall not begin physical work on any phase of the project until the following minimum criteria have been met:

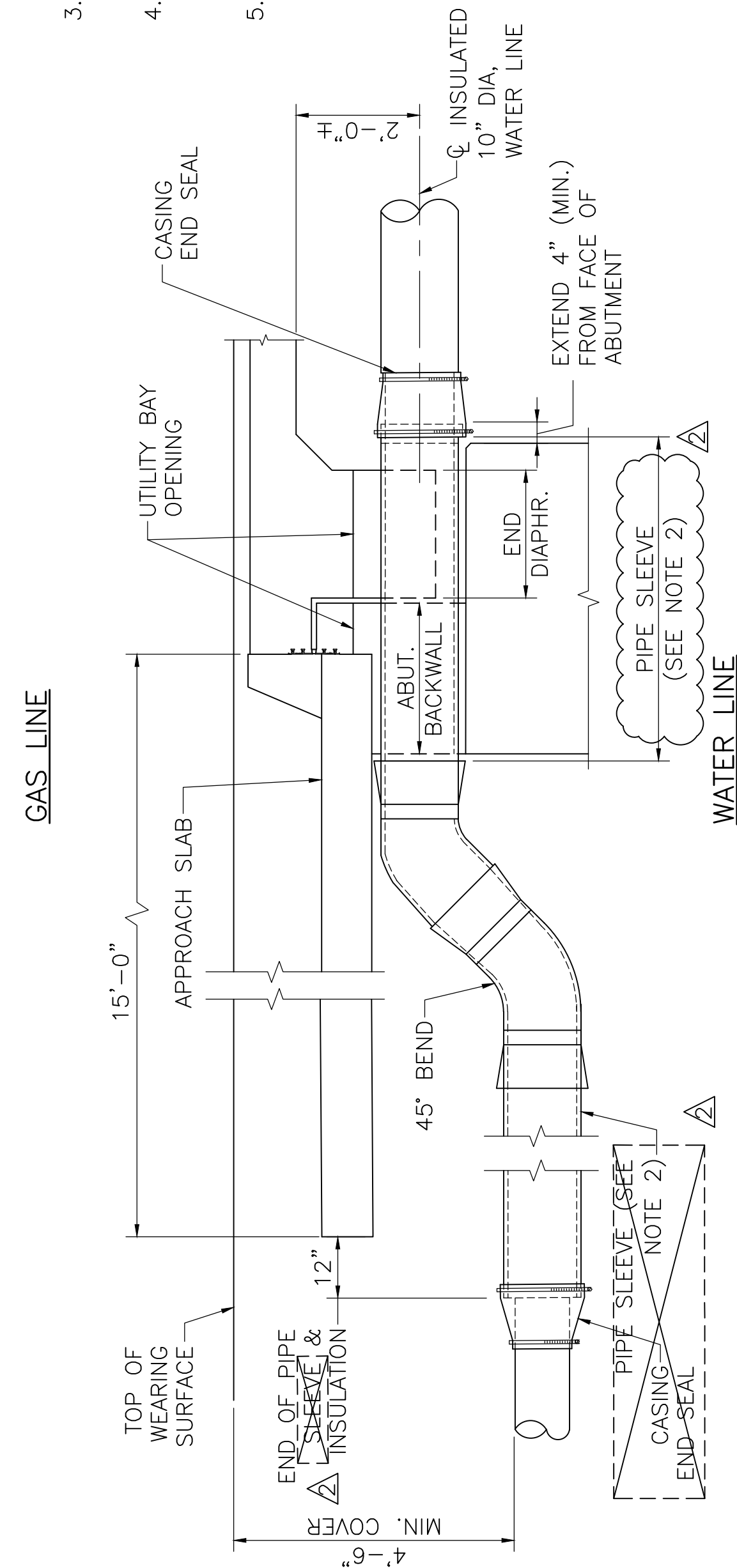
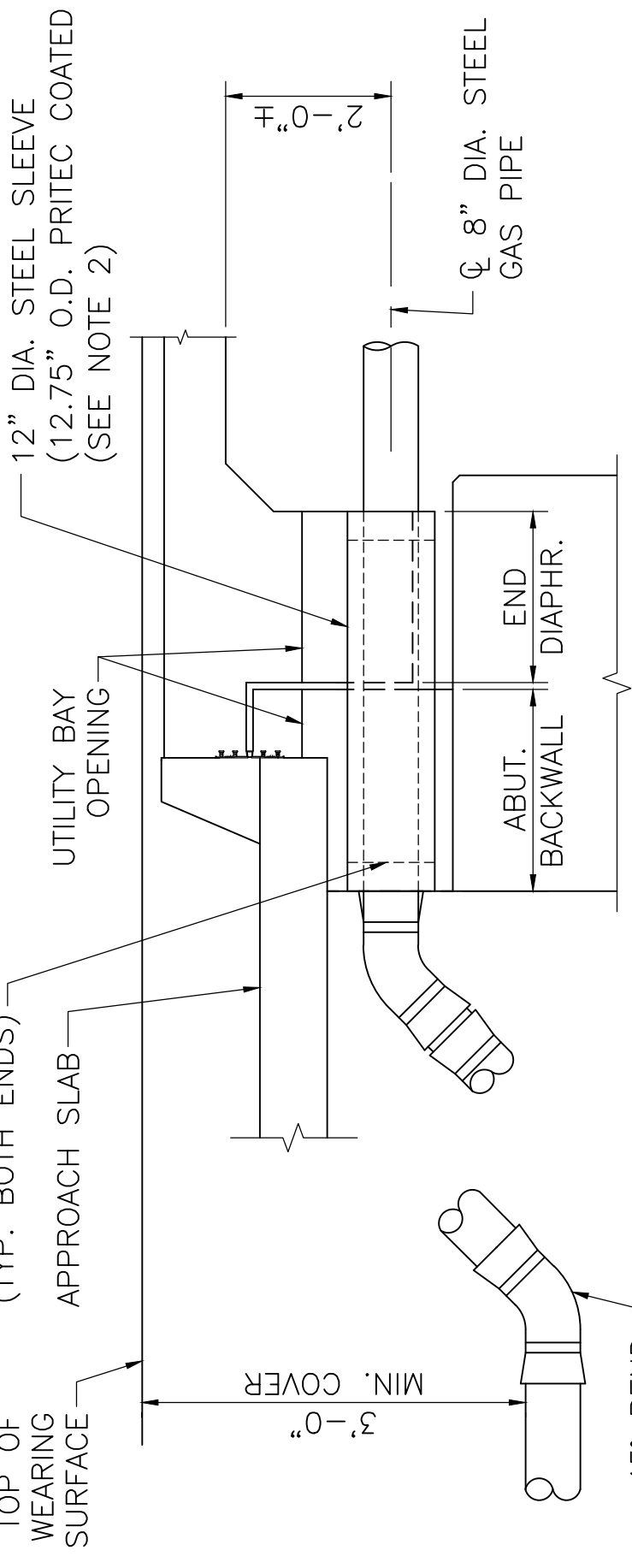
- The Contractor shall prove that all shop drawings for a particular phase of work have been approved and the materials for the construction of the proposed structure have been fabricated for that particular phase of the work.
- All signing has been installed as noted on the Plans and approved in the field by the engineer.
- All traffic control devices as noted on the Plans have been delivered to the site.

WARREN  
ST 67 (MAIN STREET)

STATE	FED. AID PROJ. NO.	SHEET NO.	TOTAL SHEETS
MA	MFA	31	92
PROJECT FILE NO. 607673			

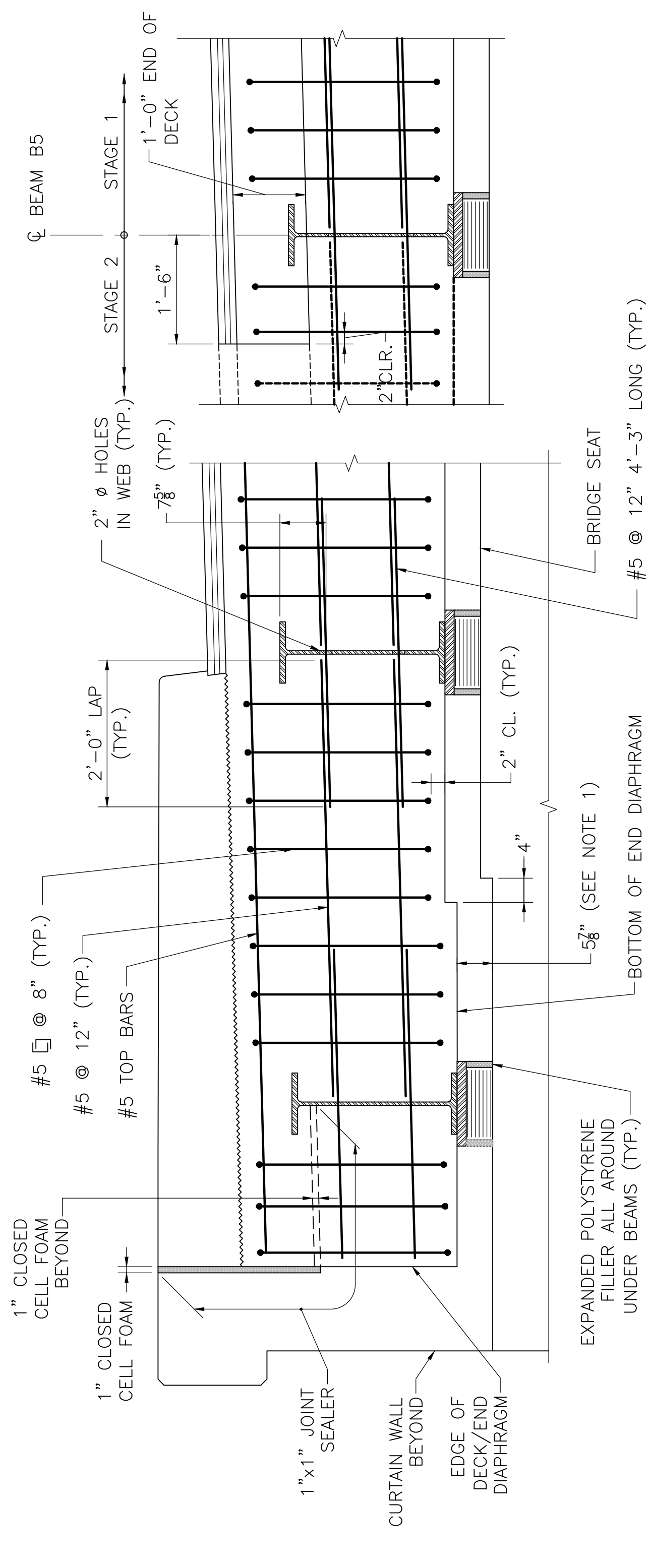
**NOTES:**

- SLEEVES SHALL BE STEEL PIPE CONFORMING TO ASTM A-53, TYPE S, GRADE B, STANDARD WEIGHT, PLAIN ENDS, HOT-DIP GALVANIZED (EXCEPT FOR GAS).
- STEEL PIPE SLEEVE SHALL BE CAST IN THE ABUTMENT BACKWALL BLOCKOUTS AND END DIAPHRAGMS. FOR THE GAS MAIN, 12" DIAMETER PRITEC COATED STEEL SLEEVES SHALL BE PROVIDED AND INSTALLED BY THE CONTRACTOR. COST FOR THE EMBEDDED SLEEVE SHALL BE INCIDENTAL TO THE CONCRETE ITEMS. NATIONAL GRID GAS TO PROVIDE LINK SEALS TO BE INSTALLED BY THE CONTRACTOR ON THE COATED PIPE SLEEVES PRIOR TO FILLING THE BACKWALL BLOCKOUTS AND END DIAPHRAGMS WITH CONCRETE. FOR THE WATER MAIN, THE MINIMUM INSIDE DIAMETER OF PIPE SLEEVES SHALL BE EQUAL TO THE DIAMETER OF THE UTILITY PIPE PLUS 2 INCHES. FOR THE CABLE AND ELECTRIC CONDUITS, THE MINIMUM INSIDE DIAMETER OF PIPE SLEEVES SHALL BE EQUAL TO THE DIAMETER OF THE UTILITY CONDUIT PLUS 1".
- NATIONAL GRID (GAS COMPANY) TO PROVIDE AND INSTALL THE 8" STEEL GAS MAIN.
- THE UTILITY SLEEVE INVERT ELEVATION AND PIPE BEND SHALL BE DETERMINED BY THE CONTRACTOR AS REQUIRED TO MAINTAIN THE MINIMUM SOIL COVER.
- THE CONTRACTOR SHALL ADJUST THE PIPE SWEEP ALONG THE BRIDGE SPAN AS REQUIRED TO MEET THE ABUTMENT BACKWALL/BRIDGE SEAT ELEVATION.



**TYPICAL UTILITY DETAILS AT ABUTMENT**

NOT TO SCALE

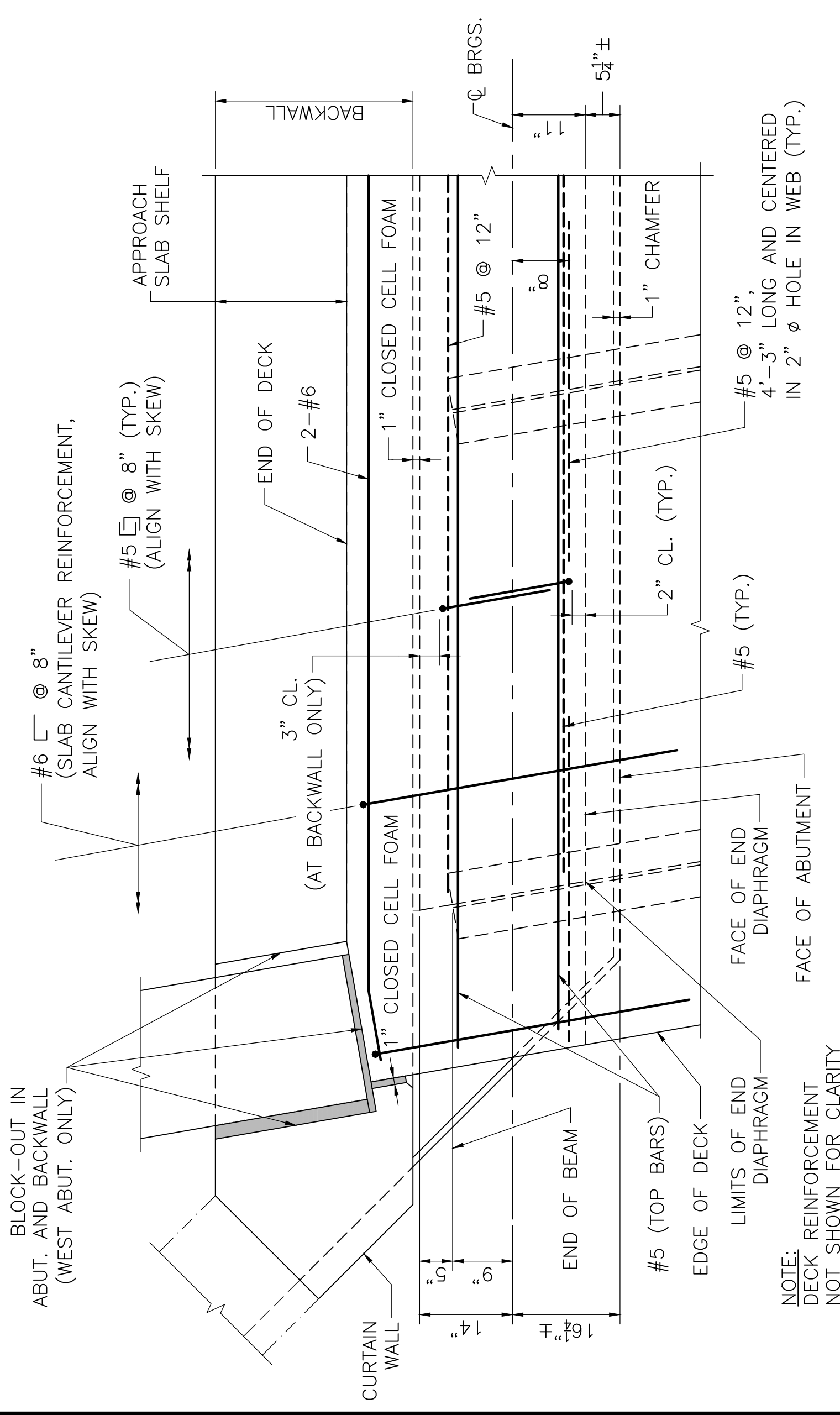


**END DIAPHRAGM ELEVATION**

SCALE: 3/8" = 1'-0"

**NOTES:**

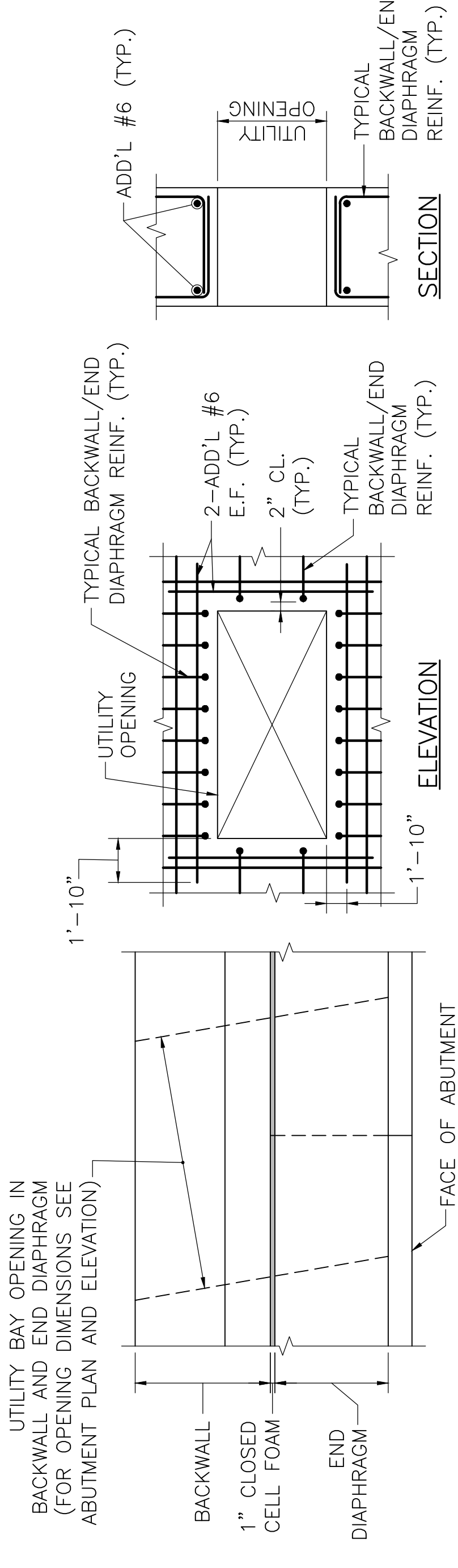
- CONTRACTOR MAY USE EXPANDED POLYSTYRENE FILLER OR A REMOVABLE FORM TO FORM THE BOTTOM OF THE END DIAPHRAGM.
- DECK REINFORCEMENT NOT SHOWN FOR CLARITY.



**END DIAPHRAGM PLAN**

SCALE: 3/8" = 1'-0"

NOTE:  
DECK REINFORCEMENT  
NOT SHOWN FOR CLARITY



**PLAN**

**ELEVATION**

(REINF. NOT SHOWN FOR CLARITY)

**CONDUIT DUCT OPENING DETAILS AT ABUTMENT BACKWALL AND END DIAPHRAGM**

NOT TO SCALE

11/1/2019

ANNOTATION MOVED

AUGUST 3, 2019	ISSUED FOR CONSTRUCTION
DATE	DESCRIPTION
	USE ONLY PRINTS OF LATEST DATE

THIS PAGE IS INTENTIONALLY LEFT BLANK