



Charles D. Baker, Governor
Karyn E. Polito, Lieutenant Governor
Jamey Tesler, Secretary & CEO
Jonathan L. Gulliver, Highway Administrator



September 14, 2021

608636-116246

ADDENDUM NO. 1

To Prospective Bidders and Others on:

LENOX
Federal Aid Project No. STP(BR-OFF)-003S(186)X
Superstructure Replacement Br. No. L-07-006 (Steel) Roaring Brook
Road over Roaring Brook

BIDS TO BE OPENED AND READ: TUESDAY, OCTOBER 5, 2021 at 2:00 P.M.

Transmitting revisions to the Contract Documents as follows:

PLANS: Revised sheets 1 and 21 of 51. (Highway and Bridge title sheets have been signed.)

Please take note of the above, substitute the revised sheets for the originals and acknowledge Addendum No. 1 in your Expedite Proposal file before submitting your bid.

Very truly yours,

Eric M. Cardone, P.E.
Construction Contracts Engineer

MB
c: William F Brown, Project Manager

THIS PAGE INTENTIONALLY LEFT BLANK

MASSACHUSETTS DEPARTMENT OF TRANSPORTATION HIGHWAY DIVISION

Addendum No. 1, September 14, 2021
6086936_HD (TCV01)DWG 8/26/2021 9:34:24 AM

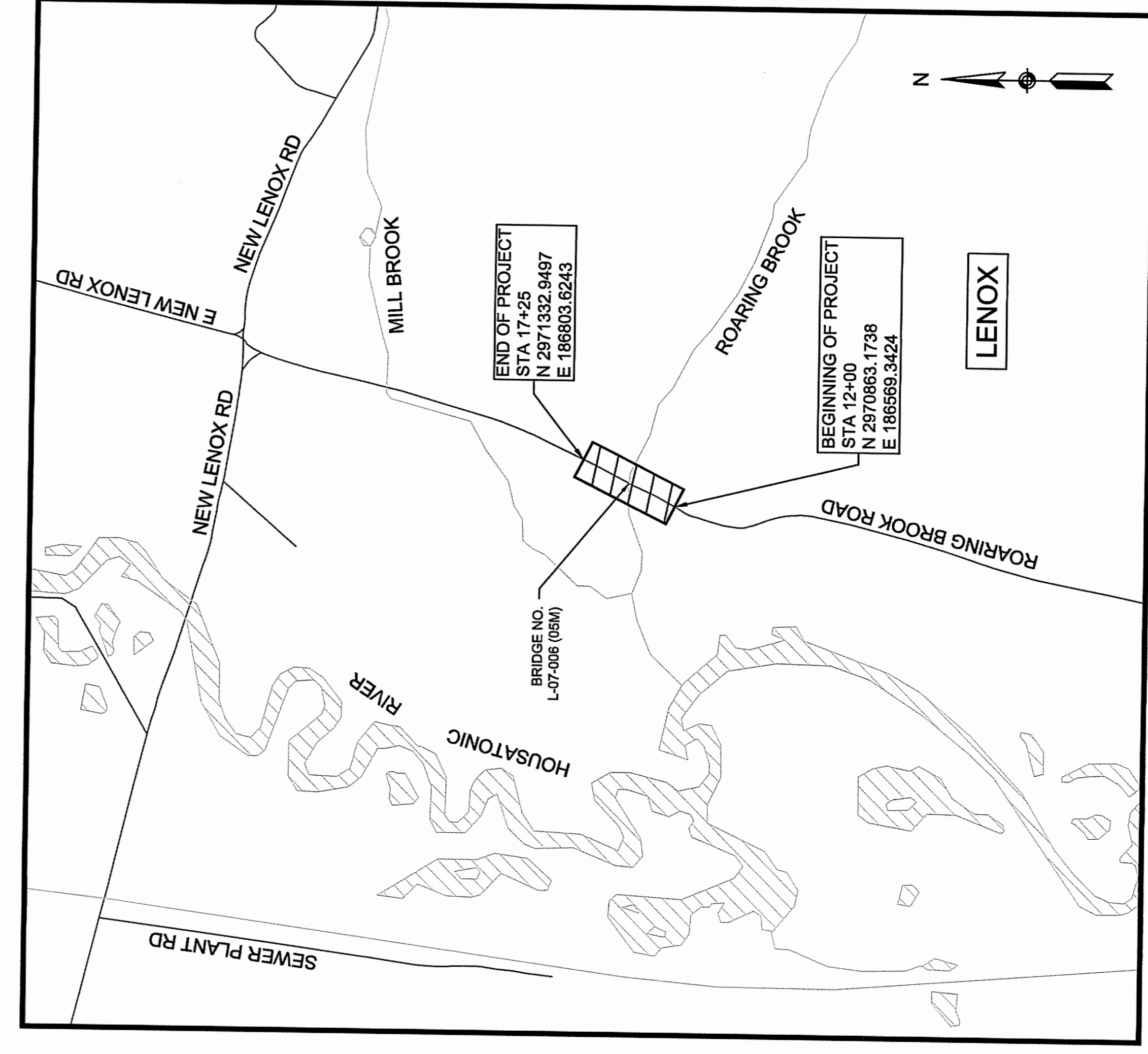
SHEET NO.	DESCRIPTION
1	TITLE SHEET & INDEX
2	LEGEND & ABBREVIATIONS
3	GENERAL NOTES
4-7	SURVEY PLANS
8-9	TYPICAL SECTIONS
10	CONSTRUCTION PLAN
11	PROFILE
12-13	CURB TIE & GRADING PLANS
14	SIGNING PLAN
15-20	TEMPORARY TRAFFIC CONTROL PLANS
21-45	BRIDGE PLANS L-07-006 (05M)
46-51	CROSS SECTIONS

PLAN AND PROFILE OF
**ROARING BROOK ROAD OVER
 ROARING BROOK**
 IN THE TOWN OF
LENOX
 BERKSHIRE COUNTY
 FEDERAL AID PROJECT NO.
 STP(BR-OFF)-003S(186)X

THESE PLANS ARE SUPPLEMENTED BY THE OCTOBER 2017 CONSTRUCTION STANDARD DETAILS, THE 2015 OVERHEAD SIGNAL STRUCTURE AND FOUNDATION STANDARD DRAWINGS, MASSDOT TRAFFIC MANAGEMENT PLANS AND DETAIL DRAWINGS, THE 1980 STANDARD DRAWINGS FOR SIGNS AND SUPPORTS, THE 1988 STANDARD DRAWINGS FOR TRAFFIC SIGNALS AND HIGHWAY LIGHTING, AND THE LATEST EDITION OF THE AMERICAN STANDARD FOR NURSERY STOCK.

LENOX ROARING BROOK ROAD			
STATE	FED. AID PROJ. NO.	SHEET NO.	TOTAL SHEETS
MA	STP(BR-OFF)-003S(186)X	1	51
PROJECT FILE NO.		6086936	

TITLE SHEET & INDEX



DESIGN DESIGNATION

DESIGN SPEED	ROARING BROOK ROAD
ADT (2007)	30 MPH
ADT (2032)	100
K	158
D	-
T (PEAK HOUR)	-
T (AVERAGE DAY)	6%
DHV (2032)	-
DDHV (2032)	-
FUNCTIONAL CLASS	LOCAL

	ISSUED FOR CONSTRUCTION	REV #
	09/04/2021	-
	DATE	DESCRIPTION
	09/03/2021	
MassDOT Massachusetts Department of Transportation Highway Division		
APPROVED CHIEF ENGINEER		DATE 9/14/21
		APPROVED CHIEF ENGINEER
SHEETS 21-45		DATE
		DATE
SHEETS 46-51		DATE

LENGTH OF PROJECT = 525.00 FEET = 0.099 MILES

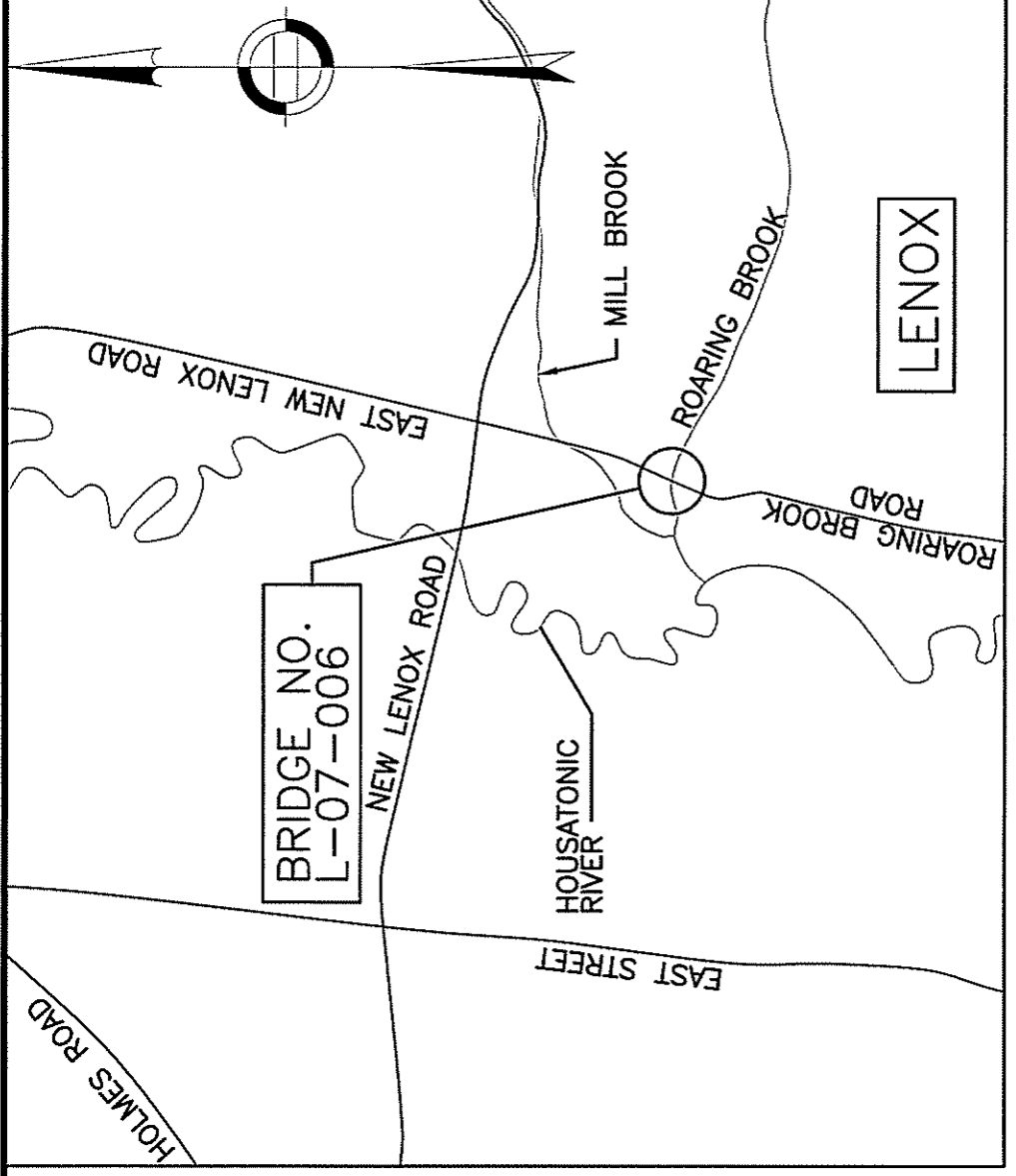
LENOX
ROARING BROOK ROAD

STATE	FED. AID PROJ. NO.	SHEET NO.	TOTAL SHEETS
MA	SP1(BF-OFF)-035(18)X	21	51
PROJECT FILE NO. 608636			

LOCUS, KEY PLAN, AND PROFILE

ESTIMATED QUANTITIES
(NOT GUARANTEED)

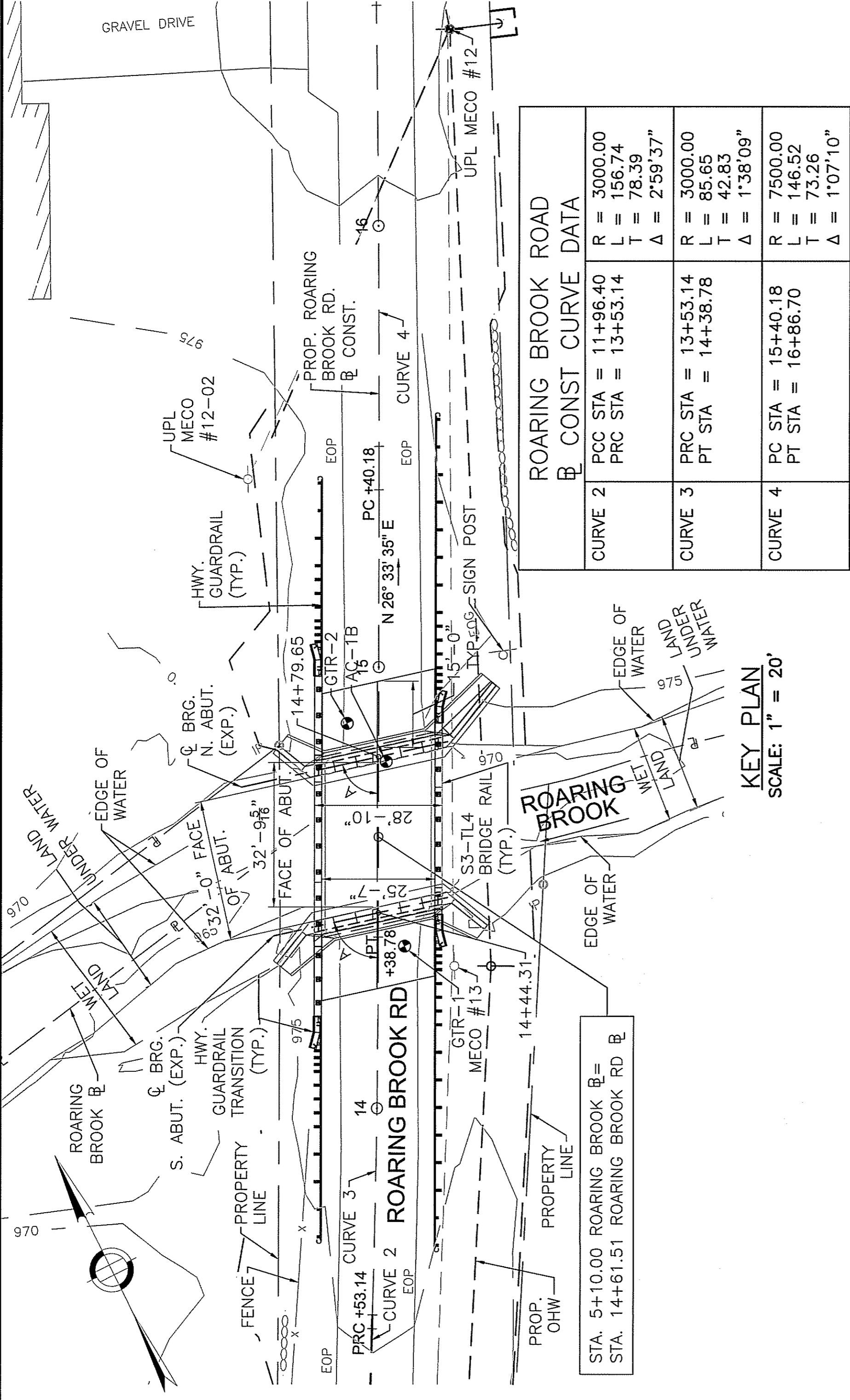
ITEM NO.	ITEM	UNITS	QUANTITIES
106.29	GRAFFITI REMOVAL	SF	400
107.855	PRESSURE INJECTION OF CRACKS	FT	35
114.1	DEMOLITION OF SUPERSTRUCTURE OF BRIDGE NO. L-07-006 (OSM)	LS	1
127.	CONCRETE EXCAVATION	CY	25
140.	BRIDGE EXCAVATION	CY	100
144.	CLASS B ROCK EXCAVATION	CY	26
151.2	GRAVEL BORROW FOR BACKFILLING STRUCTURES AND PIPES	CY	25
153.1	CONTROLLED DENSITY FILL - NON EXCAVATABLE	CY	40
450.61	SUPERPAVE BRIDGE SURFACE COURSE - 12.5 (SSC-B-12.5)	TON	10
450.71	SUPERPAVE BRIDGE PROTECTIVE COURSE - 12.5 (SPC-B-12.5)	TON	10
853.3	TEMPORARY RESTRAINED BARRIER	FT	70
853.34	TEMPORARY BARRIER (TL4) - MOVABLE STEEL BARRIER	FT	210
853.35	TEMPORARY BARRIER (TL4) - MOVABLE STEEL BARRIER REMOVED AND RESET	FT	210
950.32	TEMPORARY EXCAVATION SUPPORT	LB	18,000
991.1	CONTROL OF WATER - STRUCTURE NO. L-07-006 (OSM)	LS	1
994.01	TEMPORARY PROTECTIVE SHIELDING BRIDGE NO L-07-006 (OSM)	LS	1
995.01	BRIDGE STRUCTURE, BRIDGE NO. L-07-006 (OSM)	LS	1



LOCUS
SCALE: 1" = 2000'

INDEX OF DRAWINGS

- LOCUS, KEY PLAN, AND PROFILE
- GENERAL NOTES
- BORING 1 OF 3
- BORING 2 OF 3
- BORING 3 OF 3
- PLAN AND ELEVATION
- STAGE CONSTRUCTION 1 OF 6
- STAGE CONSTRUCTION 2 OF 6
- STAGE CONSTRUCTION 3 OF 6
- STAGE CONSTRUCTION 4 OF 6
- STAGE CONSTRUCTION 5 OF 6
- STAGE CONSTRUCTION 6 OF 6
- NORTH ABUTMENT DEMOLITION PLAN AND ELEVATION
- SOUTH ABUTMENT DEMOLITION PLAN AND ELEVATION
- PROPOSED NORTH ABUTMENT AND WINGWALLS
- PROPOSED SOUTH ABUTMENT AND WINGWALLS
- ABUTMENT SECTIONS AND DETAILS SHEET 1 OF 2
- ABUTMENT SECTIONS AND DETAILS SHEET 2 OF 2
- FRAMING PLAN AND CAMBER TABLE
- STEEL SECTIONS AND DETAILS SHEET 1 OF 2
- STEEL SECTIONS AND DETAILS SHEET 2 OF 2
- BRIDGE CROSS SECTIONS AND TOP OF FORM
- DECK REINFORCEMENT SECTIONS AND DETAILS
- S3-TL4 BRIDGE RAILING
- S3-S3-TL4 GUARDRAIL TRANSITION



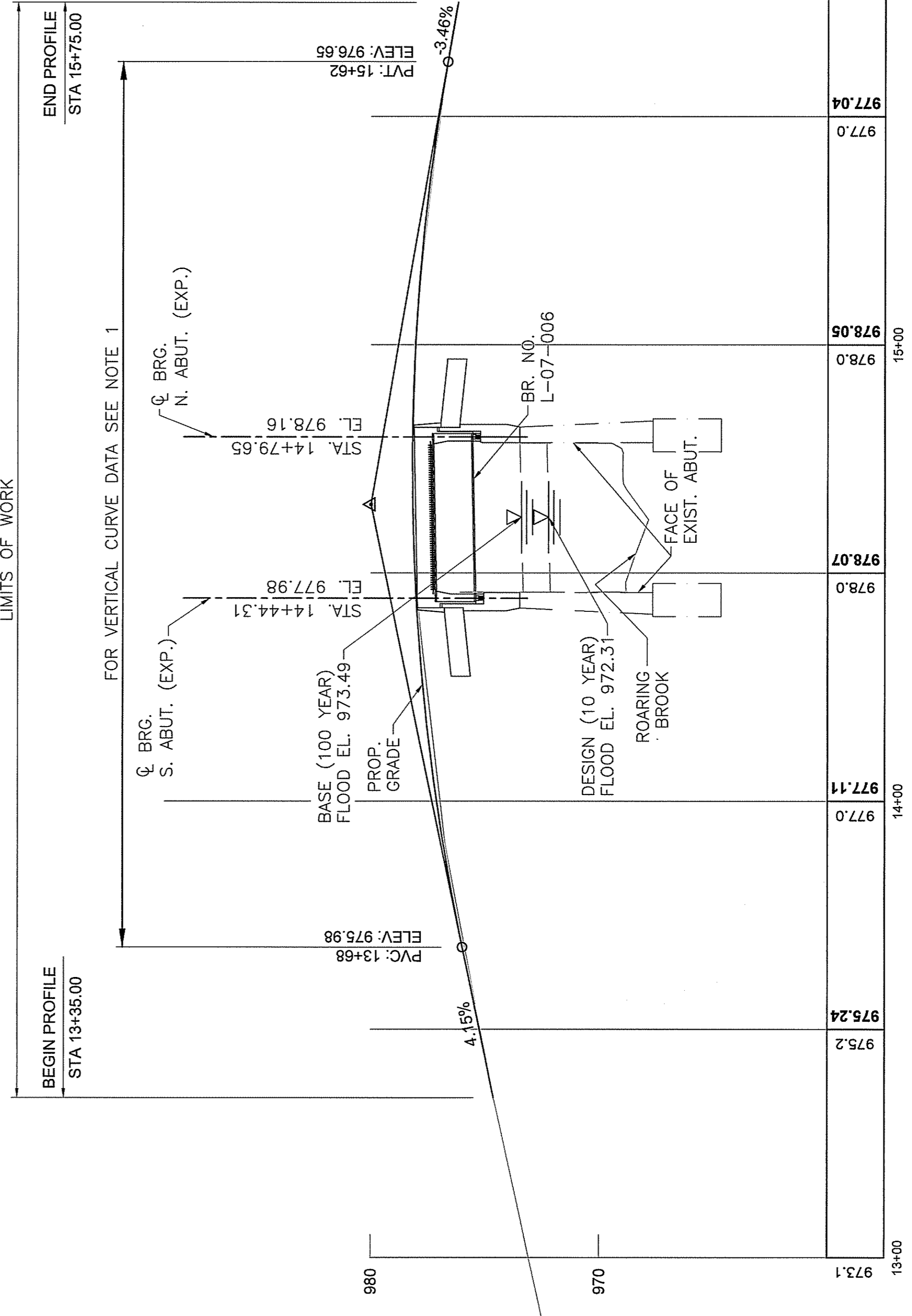
KEY PLAN
SCALE: 1" = 20'

ROARING BROOK ROAD
CONST. CURVE DATA

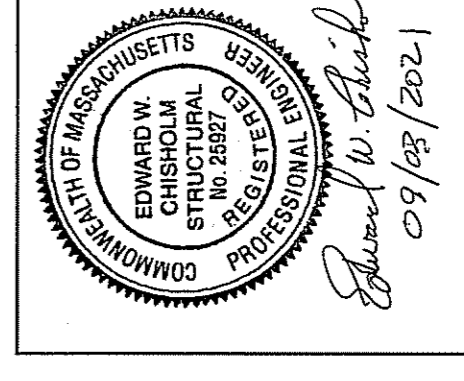
CURVE	PCC STA	PRC STA	PT STA	R	L	T	Δ
CURVE 2	11+96.40	13+53.14	14+73.78	3000.00	156.74'	78.39'	2°59'37"
CURVE 3	13+53.14	14+38.78	14+66.70	3000.00	85.65'	42.83'	1°38'09"
CURVE 4	15+40.18	16+86.70	17+33.14	7500.00	146.52'	73.26'	1°07'10"

NOTE:

- HIGH POINT ELEV = 978.18
HIGH POINT STA = 14+73.78
PVI STA = 14+65.00
PVI ELEV = 980.01
A.D. = -7.61%
K = 25.48
194' VC
184.0' SSD



ROARING BROOK ROAD PROFILE
SCALE: 1" = 20' HORIZ.
1" = 4' VERT.



Edward W. Blunk
09/08/2021



Lin Associates, Inc.
CONSULTING ENGINEERS
10 PARK PLAZA BOSTON, MASS
02114
for Chief Engineer

SEPT. 04, 2021 ISSUED FOR CONSTRUCTION



PROPOSED SUPERSTRUCTURE REPLACEMENT
LENOX

ROARING BROOK ROAD
OVER ROARING BROOK

MASSACHUSETTS DEPARTMENT OF TRANSPORTATION
HIGHWAY DIVISION
10 PARK PLAZA BOSTON, MASS
02114

Edward W. Blunk
for Chief Engineer