

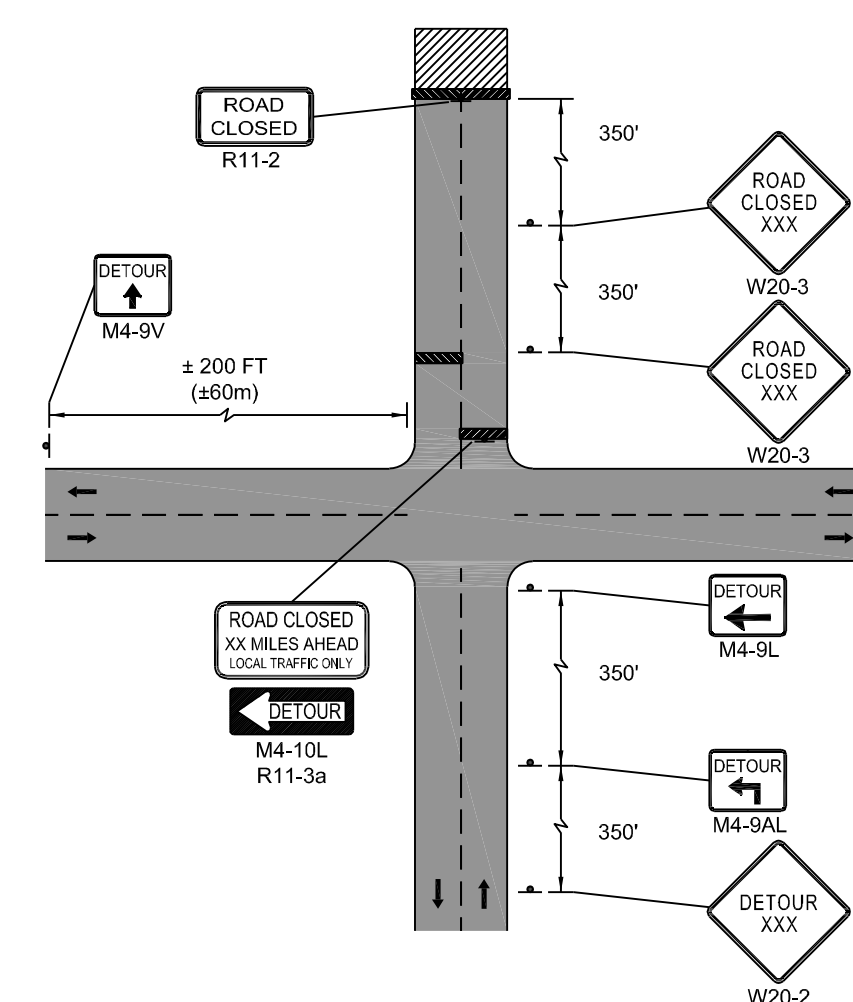
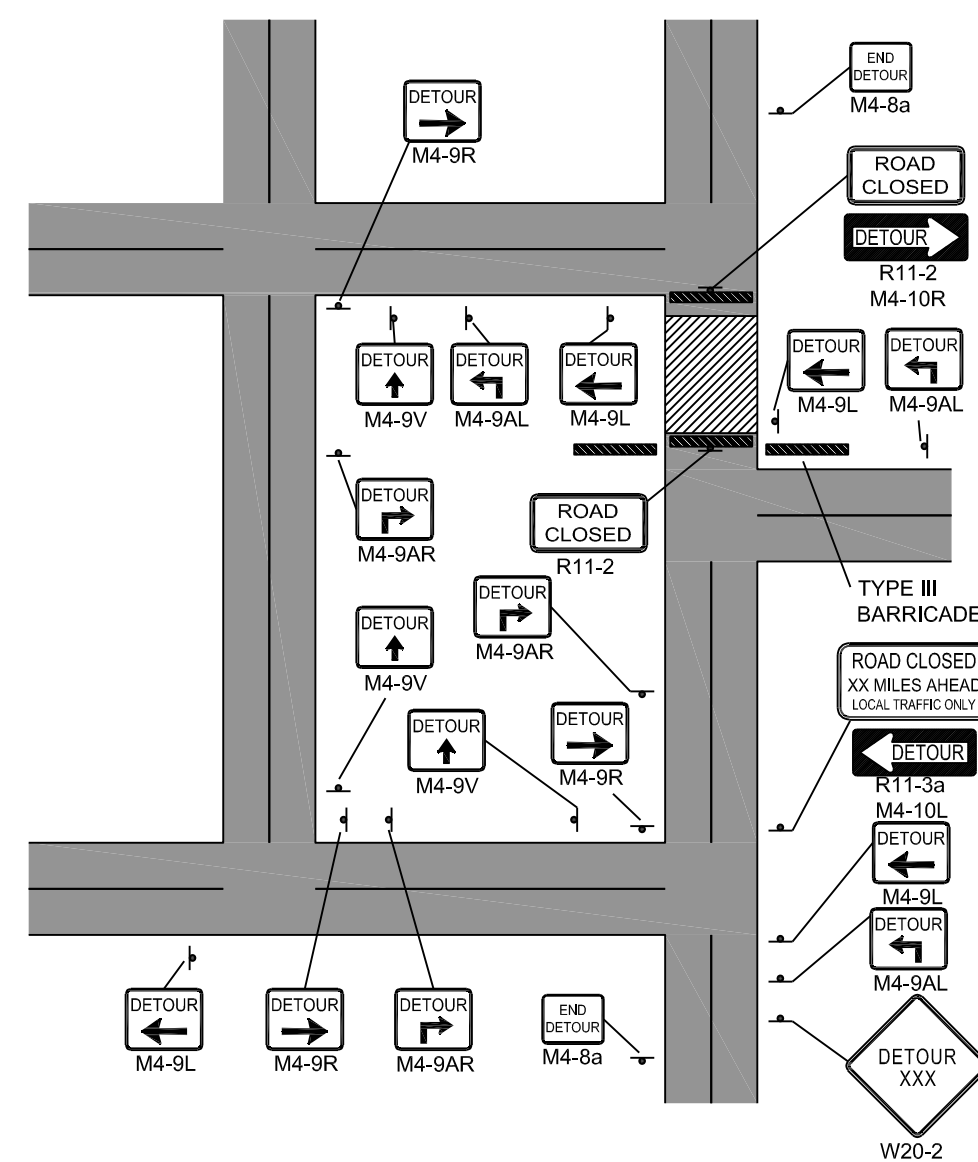
**TRAFFIC MANAGEMENT PLAN**  
NTS

**NOTES:**

1. ALL TEMPORARY TRAFFIC CONTROL WORK SHALL CONFORM TO THE LATEST EDITION OF THE "MANUAL ON UNIFORM TRAFFIC CONTROL DEVICES" (MUTCD) AND ALL REVISIONS, UNLESS SUPERCEDED BY THESE PLANS.
2. ALL SIGN LEGENDS, BORDERS, AND MOUNTING SHALL BE IN ACCORDANCE WITH THE MUTCD.
3. TEMPORARY CONSTRUCTION SIGNING AND ALL OTHER TRAFFIC CONTROL DEVICES SHALL BE IN PLACE PRIOR TO THE START OF ANY WORK.
4. TEMPORARY CONSTRUCTION SIGNING, BARRICADES, AND ALL OTHER NECESSARY WORK ZONE TRAFFIC CONTROL DEVICES SHALL BE REMOVED FROM THE HIGHWAY OR COVERED WHEN THEY ARE NOT REQUIRED FOR CONTROL OF TRAFFIC.
5. SIGNS AND SIGN SUPPORTS LOCATED ON OR NEAR THE TRAVELED WAY, CHANNELIZING DEVICES, BARRIERS, AND CRASH ATTENUATORS MUST PASS THE CRITERIA SET FORTH IN NCHRP REPORT 350, "RECOMMENDED PROCEDURES FOR THE SAFETY PERFORMANCE EVALUATION OF HIGHWAY FEATURES" AND/OR "MANUAL FOR ASSESSING SAFETY HARDWARE" (MASH).
6. CONTRACTORS SHALL NOTIFY EACH ABUTTER AT LEAST 24 HOURS IN ADVANCE OF THE START OF ANY WORK THAT WILL REQUIRE THE TEMPORARY CLOSURE OF ACCESS, SUCH AS CONDUIT INSTALLATION, EXISTING PAVEMENT EXCAVATION, TEMPORARY DRIVEWAY PAVEMENT PLACEMENT, AND SIMILAR OPERATIONS.
7. THE FIRST FIVE PLASTIC DRUMS OF A TAPER SHALL BE MOUNTED WITH TYPE A LIGHTS.
8. THE ADVISORY SPEED LIMIT, IF REQUIRED, SHALL BE DETERMINED BY THE ENGINEER.
9. DISTANCES ARE A GUIDE AND MAY BE ADJUSTED IN THE FIELD BY THE ENGINEER.
10. MAXIMUM SPACING OF TRAFFIC DEVICES IN A TAPER (DRUMS OR CONES) IS EQUAL IN FEET TO THE SPEED LIMIT IN MPH.
11. MINIMUM LANE WIDTH IS TO BE 11 FEET (3.3m) UNLESS OTHERWISE SHOWN. MINIMUM LANE WIDTH TO BE MEASURED FROM THE EDGE OF DRUMS OR MEDIAN BARRIER.
12. ALL SIGNS SHALL BE MOUNTED ON THEIR OWN STANDARD SIGN SUPPORTS.

**LEGEND:**

- REFLECTORIZED PLASTIC DRUM OR 36" CONE
- ▨ WORK ZONE
- ☐ WORK VEHICLE
- P/F POLICE/FLAGGER DETAIL
- DIRECTION OF TRAFFIC
- ☐ TRUCK MOUNTED ATTENUATOR
- ▬ TYPE III BARRICADE
- ▬ IMPACT ATTENUATOR
- ▬ CHANGEABLE MESSAGE SIGN
- ▬ MEDIAN BARRIER
- ☐ ARROW BOARD
- ▬ MEDIAN BARRIER WITH WARNING LIGHTS
- ▬ SIGN



SYMBOL	ID #	SIZE OF SIGN		TEXT	# OF SIGNS	COLOR		
		HEIGHT	WIDTH			BACKGROUND	LEGEND	BORDER
	M4-9V	24"	18"	DETOUR	6	ORANGE	BLACK	BLACK
	M4-9AL	24"	18"	DETOUR	2	ORANGE	BLACK	BLACK
	M4-9AR	24"	18"	DETOUR	2	ORANGE	BLACK	BLACK
	M4-9a	18"	18"	END DETOUR	2	ORANGE	BLACK	BLACK
	W20-2	36"	36"	DETOUR 500 FT	5	ORANGE	BLACK	BLACK
	W20-1	36"	36"	ROAD WORK AHEAD 500 FT	2	ORANGE	BLACK	BLACK
	W20-1	36"	36"	ROAD WORK 500 FT	2	ORANGE	BLACK	BLACK
	W20-1	36"	36"	ROAD WORK 1000 FT	2	ORANGE	BLACK	BLACK
	R11-2	36"	36"	ROAD CLOSED	2	ORANGE	BLACK	BLACK
	R11-3a	36"	36"	ROAD CLOSED XX MILES	2	ORANGE	BLACK	BLACK
					4			
	R11-3a M4-10L			ROAD CLOSED XX MILES	2	ORANGE	BLACK	BLACK
	R11-3a M4-10R			ROAD CLOSED XX MILES	2			

REVISIONS		Approved
Date	Description	1/10/22
	WPA APPROVAL	6/15/22
	ISSUED FOR BIDDING PURPOSES	

Scale:  
AS NOTED

Drawing No.  
S3

Sheet 3 of 3

Designed JRB	6/13//22	Drawn JRB	6/13/22	Checked JFC	Date
Approved _____ Title _____					

**Civil/Arc\Design**

JEFFREY F. COLLINGWOOD, PE  
PO Box 343, Ashley Falls, MA 01222  
(413) 717-9844 \* jcollingwoodpe@gmail.com

