

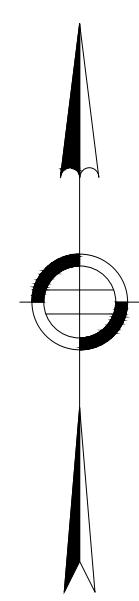
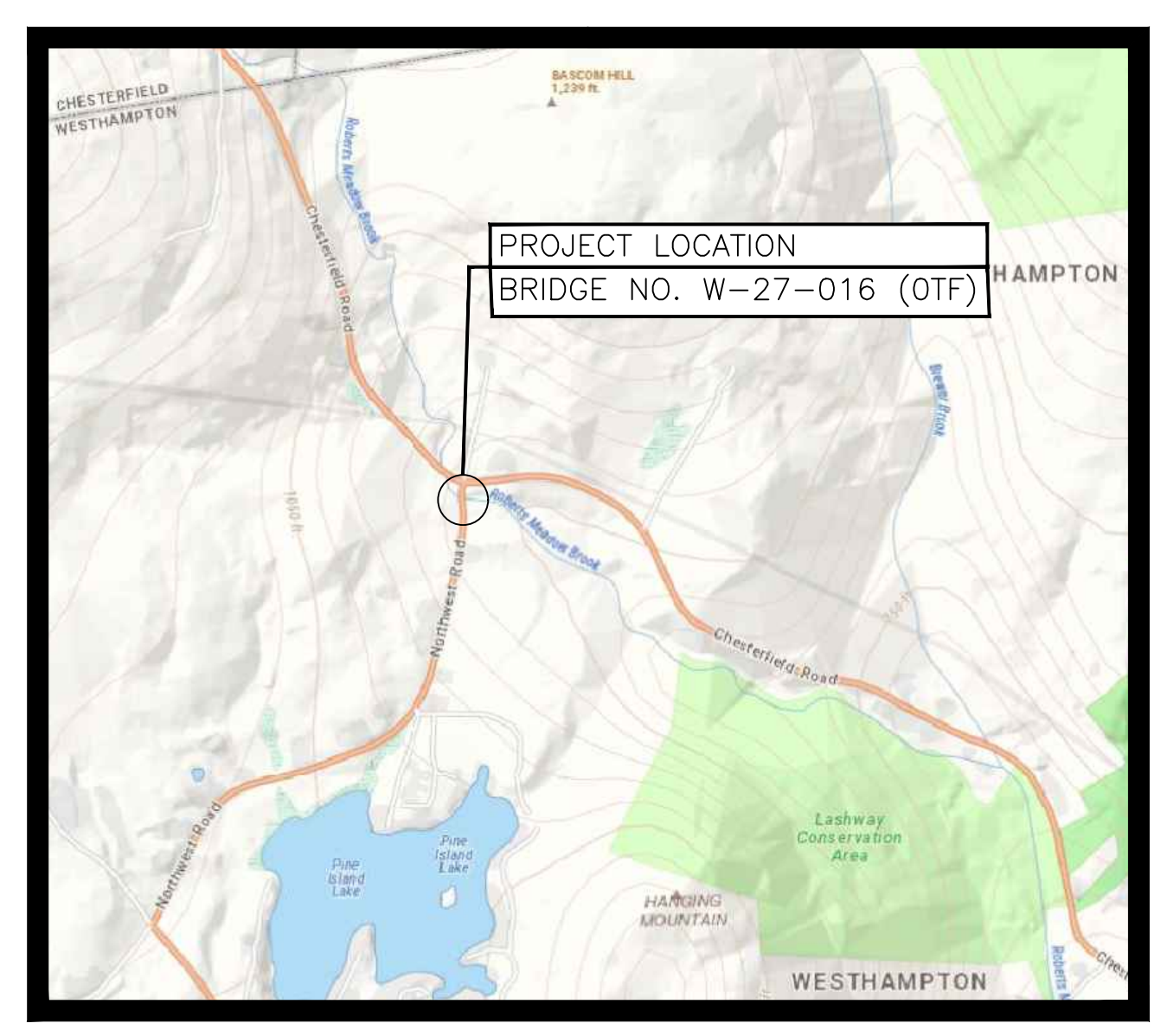
**FRAMING PLAN**  
SCALE: 1/4" = 1'-0"

**GENERAL NOTES**

- GENERAL DESIGN IN ACCORDANCE WITH THE 17TH EDITION OF THE AMERICAN ASSOCIATION OF STATE HIGHWAY AND TRANSPORTATION OFFICIALS STANDARD SPECIFICATIONS FOR HIGHWAY BRIDGES WITH INTERIM SPECIFICATIONS THROUGH 2002, FOR H20 LOADING.
- ALL WORK SHALL BE IN ACCORDANCE WITH THE RELEVANT PROVISIONS OF THE MASSDOT STANDARD SPECIFICATIONS FOR HIGHWAYS AND BRIDGES WITH THE LATEST SUPPLEMENTAL SPECIFICATIONS, SECTION 960.
- THESE DRAWINGS WERE FORMATTED FOR 24"x36" PLAN SHEETS. SCALES NOTED ON THE DRAWINGS ARE NOT APPLICABLE TO REDUCED SIZE PRINTS.
- EXISTING STRUCTURE DIMENSIONS AND DETAILS ARE ACCORDING TO ORIGINAL CONSTRUCTION DRAWINGS, OBSERVATION, AND FIELD MEASUREMENTS AND ARE NOT GUARANTEED. THE CONTRACTOR SHALL DETERMINE AND ESTABLISH ALL DIMENSIONS AND EXISTING DETAILS NECESSARY FOR COMPLETION OF ALL WORK BY FIELD MEASUREMENT (I.E. BEARING LOCATIONS, EXISTING REPAIRS, ETC.) THE CONTRACTOR SHALL BE RESPONSIBLE FOR THE ADEQUACY AND ACCURACY THEREOF, AND SHALL NOT ORDER ANY MATERIAL OR COMMENCE ANY FABRICATION UNTIL THEY HAVE MADE THE REQUIRED MEASUREMENTS ON THE ACTUAL STRUCTURE AND THE EXTENT OF THE PROPOSED WORK HAS BEEN APPROVED BY THE ENGINEER.
- THE CONTRACTOR SHALL TAKE ALL PRECAUTIONS NECESSARY NOT TO DAMAGE UTILITIES, EQUIPMENT, STRUCTURES, OR THOSE PORTIONS OF THE SUPERSTRUCTURE THAT ARE TO REMAIN IN PLACE, THAT ARE TO BE REUSED, OR THAT ARE TO REMAIN THE PROPERTY OF OTHERS. ANY PORTION OF THE SUPERSTRUCTURE AND SUBSTRUCTURE TO REMAIN WHICH BECOMES DAMAGED AS A RESULT OF THE CONTRACTOR'S OPERATIONS SHALL BE REPAIRED TO THE SATISFACTION OF THE ENGINEER AND AT THE CONTRACTOR'S EXPENSE.
- REINFORCING STEEL SHALL CONFORM TO THE REQUIREMENTS OF AASHTO M31 GRADE 60.
- THREADED RODS SHALL BE 3/4"Ø AND CONFORM TO ASTM A307 GRADE A. NUTS AND WASHERS SHALL CONFORM TO AASHTO M291 AND M293 RESPECTIVELY.
- NO REPAIRS SHALL COMMENCE UNTIL ALL MEASUREMENTS HAVE BEEN MADE AND MATERIALS (EXCLUDING CONCRETE) ARE ON HAND FOR THE REPAIR.
- THE CONTRACTOR SHALL ASSUME ALL EXISTING COATINGS CONTAIN LEAD UNLESS OTHERWISE DETERMINED BY TESTING. ALL DEBRIS CREATED BY OPERATIONS SHALL BE PROPERLY CONTAINED AND DISPOSED OF.

**CONSTRUCTION PROCEDURE**

- THE EXISTING CONCRETE BEAM SEATS, BACKWALLS, AND STRUCTURAL STEEL SHALL BE CLEANED PRIOR TO PLACEMENT OF THE BEAM END ENCASUREMENT. ALL DEBRIS AND DELETERIOUS MATERIAL SHALL BE REMOVED FROM THE BEAM SEAT.
- PRIOR TO PLACEMENT OF THE BEAM END ENCASUREMENT, EXPANDED POLYSTYRENE SHALL BE ATTACHED WITH ADHESIVE TO ALL SURFACES OF THE BACKWALLS AND BEAM SEATS. THE CONTRACTOR SHALL INSURE THAT ALL THE EXISTING ABUTMENT CONCRETE IS PROPERLY LINED WITH EXPANDED POLYSTYRENE SO THAT THE ENCASUREMENT CONCRETE DOES NOT COME IN CONTACT WITH EXISTING ABUTMENT CONCRETE.
- THE CONCRETE PLACEMENT HOLES SHALL BE EXCAVATED USING CHIPPING HAMMERS TO A MAXIMUM 12" DIAMETER. ANY REBAR ENCOUNTERED WHILE DRILLING SHALL BE PRESERVED AND CARE SHALL BE TAKEN TO INSURE EXISTING DECK REINFORCEMENT AND STEEL DIAPHRAGM WILL NOT BE DAMAGED.
- CONCRETE PLACEMENT AND VENT HOLES SHALL BE FLUSH TO TOP OF DECK SURFACE. ASPHALT WEARING SURFACE SHALL BE PATCHED AFTER 3 DAYS OF CURING AND PATCHES SHALL MATCH THE EXISTING ROADWAY GRADE.
- CEMENT CONCRETE SHALL BE 5000 PSI, 3/8", 710 HP CEMENT CONCRETE WITH A 7" ± 1" SLUMP FROM A MASSDOT APPROVED PRODUCER. MIX DESIGN SHALL BE SUBMITTED TO THE ENGINEER PRIOR TO PLACEMENT.
- CEMENT CONCRETE CONSOLIDATION SHALL BE ACHIEVED USING CONCRETE VIBRATORS THAT ARE INSERTED THRU THE DECK OPENINGS. A MINIMUM OF TWO CONCRETE VIBRATORS SHALL BE ON-SITE DURING CONCRETE PLACEMENT



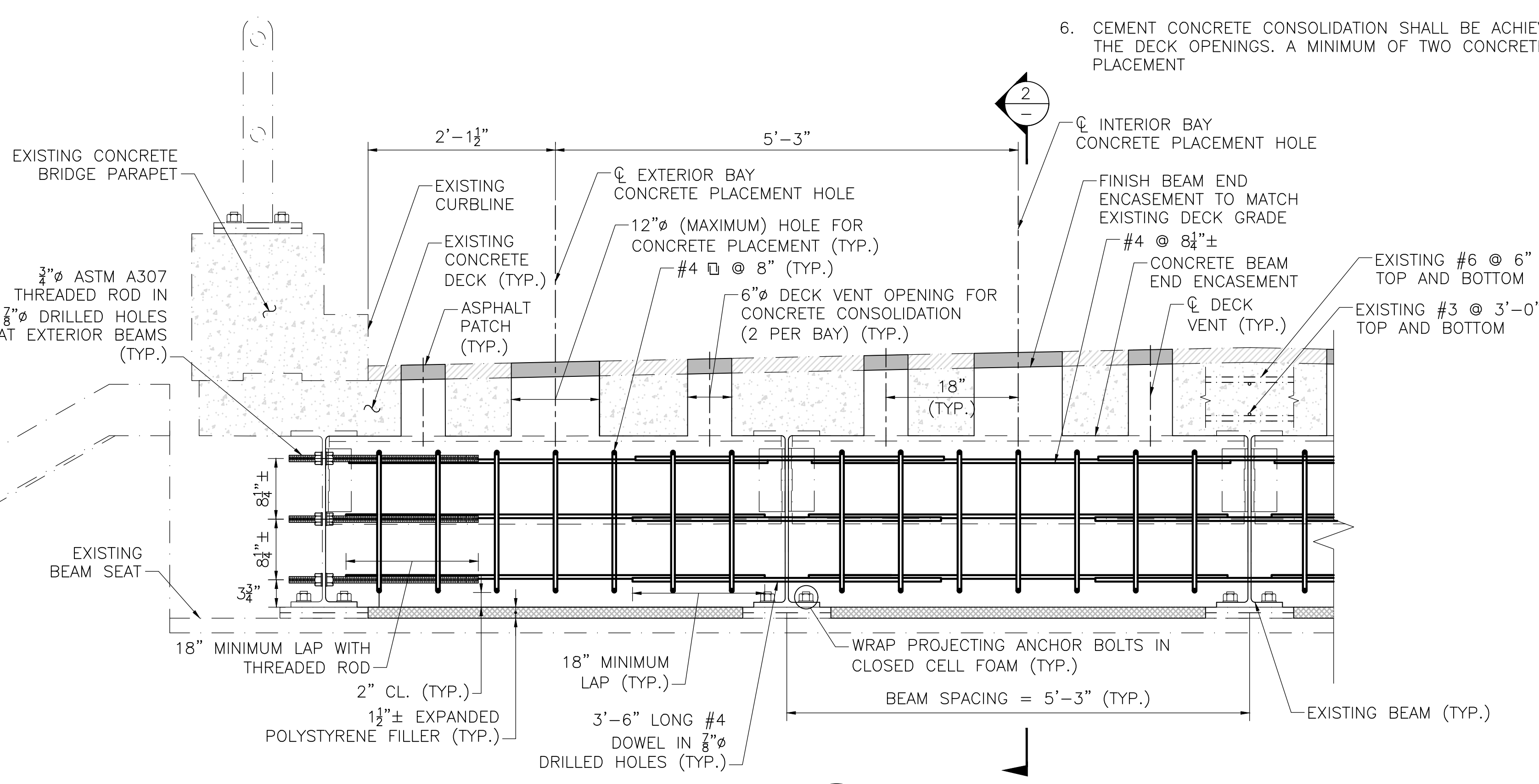
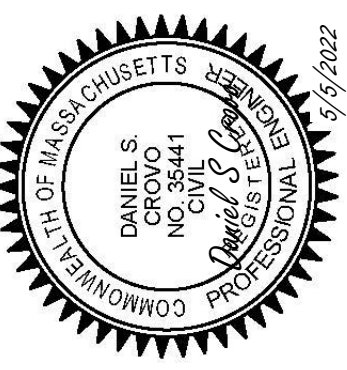
**ESTIMATED QUANTITIES**  
NOT GUARANTEED

ITEM NO.	ITEM	UNIT	QUANTITY
905.2	5000 PSI, 3/8 INCH, 710 HP CEMENT CONCRETE	CY	4.00
910.	STEEL REINFORCEMENT FOR STRUCTURES	LB	475

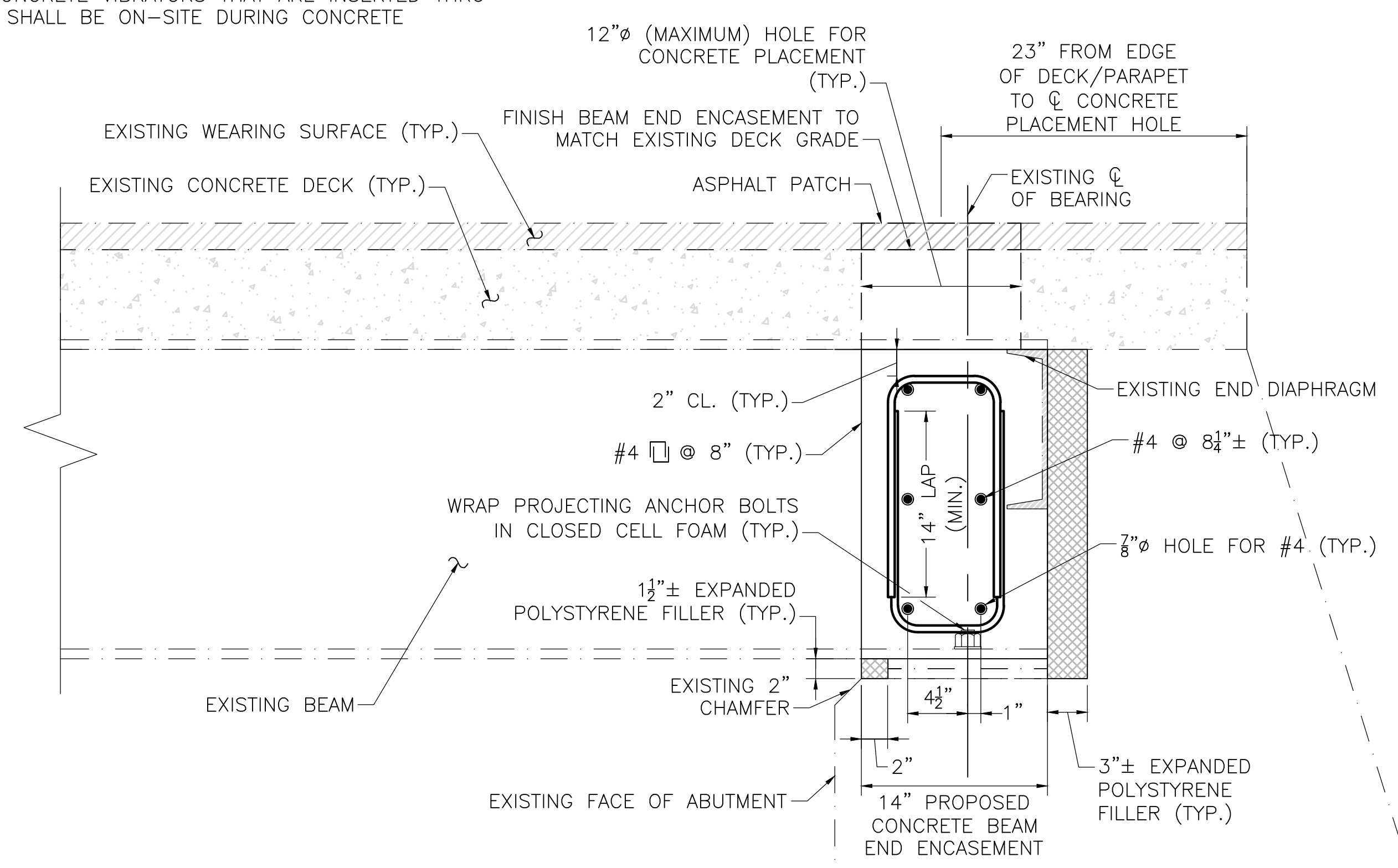
**COMMONWEALTH OF MASSACHUSETTS**  
**MassDOT, Highway Division**  
**APPROVED UNDER PROVISIONS OF**  
**MASS. GEN. LAWS CH 85 S 35**

*[Signature]*  
5/9/22

**DISTRICT TWO BRIDGE ENGINEER**          **DATE**



**SECTION 1**  
SCALE: 1" = 1'-0"



**SECTION 2**  
SCALE: 1 1/2" = 1'-0"

**63 KENDRICK STREET  
NEEDHAM, MA 02494  
781-355-7100  
781-355-7101 (FAX)**

**GILL ENGINEERING**

DATE: \_\_\_\_\_

REGISTERED PROFESSIONAL ENGINEER

**BEAM END ENCASUREMENT REPAIRS**  
TOWN OF WESTHAMPTON  
BRIDGE REPAIRS FOR WESTHAMPTON W-27-016  
NORTHWEST ROAD OVER ROBERTS MEADOW BROOK

**GENERAL NOTES AND REPAIR DETAILS**  
SHEET 1 OF 1

Plotted on: 4-May-2022 4:31 PM  
W-27-016 Beam End Repair Plans.dwg