



Charles D. Baker, Governor
Karyn E. Polito, Lieutenant Governor
Jamey Tesler, Secretary & CEO
Jonathan L. Gulliver, Highway Administrator



December 30, 2022

606024-120178

ADDENDUM NO. 3

To Prospective Bidders and Others on:

TAUNTON

**Federal Aid Project No. STP/HPP/CMQ-0035(015)X
Roadway Reconstruction and Related Work (Including Signals)
on a Section of Route 44 (Dean Street)**

THIS PROPOSAL TO BE OPENED AND READ: WEDNESDAY, JANUARY 4, 2023 @ 2:00 P.M.

Transmitting revisions to the Contract Documents as follows:

<u>QUESTIONS AND RESPONSES:</u>	2 pages.
<u>DOCUMENT 00010:</u>	Revised page 3.
<u>DOCUMENT 00104:</u>	Revised page 3.
<u>DOCUMENT 00813:</u>	Deleted document in its entirety and inserted new document (4 pages).
<u>DOCUMENT 00880:</u>	Deleted document in its entirety and inserted new document (12 pages).
<u>DOCUMENT A00801:</u>	Revised pages 24, 170, 171, 173, 174, 175, 196, and 235. Inserted new pages 24.1, 24.2, 147.1, 147.2, and 162.1 through 162.14.
<u>DOCUMENT B00420:</u>	Revised pages 3, 10, and 21 through 32. Removed pages 33 and 34.
<u>PLANS:</u>	Revised sheet Nos. 60, 113, and 123 of 185.

Take note of the above, substitute the revised pages for the originals, delete the documents indicated, insert new pages and documents in proper order, and acknowledge Addendum No. 3 in your Expedite Proposal file before submitting your bid.

Very truly yours,

Eric M. Cardone, P.E.
Construction Contracts Engineer

AB
c: Gregory Mischel, Project Manager

THIS PAGE INTENTIONALLY LEFT BLANK

TAUNTON
Federal Aid Project No. STP/HPP/CMQ-0035(015)X
Roadway Reconstruction and Related Work (Including Signals)
on a Section of Route 44 (Dean Street)
(Proposal No. 606024-120178)

Questions and Responses

Addendum No. 3, December 30, 2022

Contractors Supply Inc., e-mailed December 21, 2022

Question 5) Item 482.32 of the above referenced job calls for the joint seal material to conform to subsection M3.05.2, which specifies a preformed bituminous joint filler for concrete to be used. However, this same item seems to imply a hot poured sealant being required further down in the sealing & equipment section. Please clarify.

Response 5) MassDOT Standard Specifications (2022 Edition) the Materials Specifications have been revised. On Page 872 of the PDF version, you will see that M3.05.2 used to be Preformed Bituminous Joint Filler for Concrete, it has now been revised to M3.05.2: Hot Applied Crack Sealer.

Hub Foundation, e-mailed December 27, 2022

Question 6) A 2.5' rock socket into competent rock is required and it is assumed that the weathered rock would not count towards that 2.5'. What pay item will be used for the weathered/decomposed rock?

Response 6) Payment will be provided under Item 945.200. See revised page A00801-235.

E.T.&L. Corp., e-mailed December 27, 2022

Question 7) Can the flow rate of the existing sewer line in the vicinity of the 4'x4' culvert extension be provided?

Response 7) The flow rate for the by-pass will be the same as the flow provided in Section 02149 (A00805-14):

The Contractor shall provide a system capable of bypassing a minimum of Four (4) MGD (million gallons per day).

Vigil Electric, e-mailed December 28, 2022

Question 8) There are no boring logs for the proposed mast arm foundations at Rt 44 and Longmeadow Dr. & Hon. G.M. Owen Riverway. Please provide them.

Response 8) Borings MB-1 through MB-4 correspond to the mast arm locations and are included on Sheets 4 and 5 of the plan set. In addition, on Sheet 79 – Traffic Signal Plans, there is a table in the top left corner which calls out the borings and provides the design information.

TAUNTON
Federal Aid Project No. STP/HPP/CMQ-0035(015)X
Roadway Reconstruction and Related Work (Including Signals)
on a Section of Route 44 (Dean Street)
(Proposal No. 606024-120178)

Questions and Responses

Addendum No. 3, December 30, 2022

E.T.&L., e-mailed December 29, 2022

Question 9) On Page A00801-24 of the project specifications, the notes on the superseding order of conditions state that the Environmental Monitor required by the SOC may be the same person as the Wetland Scientist as long as all conditions are met. Will all work performed by the Environmental Monitor then be paid under Item 755.75 Wetland Specialist?

Response 9) See revised page A00801-24.1

Question 10) The Stage 1 Construction Staging Plans show a temporary pedestrian detour on the paved shoulder adjacent to traffic. The specification for Item 852.11 Temporary Pedestrian Barricade states that the temporary pedestrian barricades shall be crashworthy if exposed to traffic. Should temporary barrier TL-2 be installed throughout the pedestrian detour adjacent to traffic in lieu of the pedestrian barricade shown in the detail on Page 91? If so, will this barrier be paid under Item 853.2 Temporary Barrier (TL-2)?

Response 10) Item 852.11 – Temporary Pedestrian Barricade shall be the only payment item for providing a Temporary Pedestrian Access Route, which covers all requirements set forth in the specifications. No additional payment items, separate from 852.11 and 852.12, will be used for the Temporary Pedestrian Access Route.

Question 11) Please provide a size and location for the offsite riverfront mitigation area. What will be required for contractor access to this offsite mitigation area? Is all work associated with the mitigation area to be paid under contract items?

Response 11) See revised pages A00801-162.1 through 162.14

③ Addendum No. 3, December 30, 2022

TABLE OF CONTENTS (Continued)

DOCUMENT A00860

MASSACHUSETTS DEPARTMENT OF ENVIRONMENTAL PROTECTION

NOTICE OF INTENT A00860-1 through 780

DOCUMENT A00861

MASSACHUSETTS DEPARTMENT OF ENVIRONMENTAL PROTECTION

ORDER OF CONDITIONS A00861-1 through 44

DOCUMENT A00870

NOAA FISHERIES GREATER ATLANTIC REGIONAL FISHERIES OFFICE

EFH ASSESSMENT AND FWCA CONSULTATION WORKSHEET A00870-1 through 18

DOCUMENT A00871

NOAA FHWA NLAA VERIFICATION FORM..... A00871-1 through 14

DOCUMENT A00880

UNITED STATES DEPARTMENT OF THE INTERIOR

FISH AND WILDLIFE SERVICE DETERMINATION..... A00880-1 through 16

DOCUMENT A00881

NORTHERN LONG-EARED BAT PRESENCE/PROBABLE ABSENCE SURVEY A00881-1 through 46

DOCUMENT B00420

PROPOSAL.....B00420-1 through 32

DOCUMENT B00853

SCHEDULE OF PARTICIPATION BY DISADVANTAGED

BUSINESS ENTERPRISES (DBEs)B00853-1 through 2

DOCUMENT B00854

DISADVANTAGED BUSINESS ENTERPRISES (DBE) PARTICIPATION

LETTER OF INTENT.....B00854-1 through 2

DOCUMENT B00855

DBE JOINT CHECK ARRANGEMENT APPROVAL FORM.....B00855-1 through 2

DOCUMENT B00856

JOINT VENTURE AFFIDAVITB00856-1 through 4

*** END OF DOCUMENT ***

③ Addendum No. 3, December 30, 2022

NOTICE TO CONTRACTORS (Continued)**PRICE ADJUSTMENTS**

③ This Contract contains price adjustments for hot mix asphalt and Portland cement mixtures, diesel fuel, and gasoline. For reference the base prices are as follows: liquid asphalt \$665.00 per ton, Portland cement \$170.00 per ton, diesel fuel \$4.671 per gallon, and gasoline \$3.074 per gallon. MassDOT posts the **Price Adjustments** on their Highway Division's website at <https://www.mass.gov/massdot-contract-price-adjustments>

This Contract contains Price Adjustments for steel. See Document 00813 - PRICE ADJUSTMENT FOR STRUCTURAL STEEL AND REINFORCING STEEL for their application and base prices.

MassDOT projects are subject to the rules and regulations of the Architectural Access Board (521 CMR 1.00 et seq.)

Prospective bidders and interested parties can access this information and more via the internet at WWW.COMMBUYS.COM.

BY: Jamey Tesler, Secretary and CEO, MassDOT
Jonathan L. Gulliver, Administrator, MassDOT Highway Division
SATURDAY, SEPTEMBER 10, 2022

DOCUMENT 00813

SPECIAL PROVISIONS

PRICE ADJUSTMENTS FOR STRUCTURAL STEEL AND REINFORCING STEEL

December 15, 2022

This special provision applies to all projects containing the use of structural steel and/or reinforcing steel as specified elsewhere in the Contract work. It applies to all structural steel and all reinforcing steel, as defined below, on the project. Compliance with this provision is mandatory, i.e., there are no “opt-in” or “opt-out” clauses. Price adjustments will be handled as described below and shall only apply to unfabricated reinforcing steel bars and unfabricated structural steel material, consisting of rolled shapes, plate steel, sheet piling, pipe piles, steel castings and steel forgings.

Price adjustments will be variances between Base Prices and Period Prices. Base Prices and Period Prices are defined below.

Price adjustments will only be made if the variances between Base Prices and Period Prices are 5% or more. A variance can result in the Period Price being either higher or lower than the Base Price. Once the 5% threshold has been achieved, the adjustment will apply to the full variance between the Base Price and the Period Price.

Price adjustments will be calculated by multiplying the number of pounds of unfabricated structural steel material or unfabricated reinforcing steel bars on a project by the index factor calculated as shown below under Example of a Period Price Calculation.

Price adjustments will not include guardrail panels or the costs of shop drawing preparation, handling, fabrication, coatings, transportation, storage, installation, profit, overhead, fuel costs, fuel surcharges, or other such charges not related to the cost of the unfabricated structural steel and unfabricated reinforcing steel.

The weight of steel subject to a price adjustment shall not exceed the final shipping weight of the fabricated part by more than 10%.

Base Prices and Period Prices are defined as follows:

Base Prices of unfabricated structural steel and unfabricated reinforcing steel on a project are fixed prices determined by the Department and found in the table below. While it is the intention of the Department to make this table comprehensive, some of a project’s unfabricated structural steel and/or unfabricated reinforcing steel may be inadvertently omitted. Should this occur, the Contractor shall bring the omission to the Department’s attention so that a contract alteration may be processed that adds the missing steel to the table and its price adjustments to the Contract.

The Base Price Date is the month and year in which MassDOT opened bids for the project. This date is used to select the Base Price Index.

Period Prices of unfabricated structural steel and unfabricated reinforcing steel on a project are variable prices that have been calculated using the Period Price Date and an index of steel prices to adjust the Base Price.

The Period Price Date is the date the steel was delivered to the fabricator as evidenced by an official bill of lading submitted to the Department containing a description of the shipped materials, weights of the shipped materials and the date of shipment. This date is used to select the Period Price Index.

The index used for the calculation of Period Prices is the U.S. Department of Labor Bureau of Labor Statistics Producer Price Index (PPI) Series ID WPU101702 (Not Seasonally Adjusted, Group: Metals and Metal Products, Item: Semi-finished Steel Mill Products.) As this index is subject to revision for a period of up to four (4) months after its original publication, no price adjustments will be made until the index for the period is finalized, i.e., the index is no longer suffixed with a “(P)”.

Period Prices are determined as follows:

Period Price = Base Price X Index Factor

Index Factor = Period Price Index / Base Price Index

Example of a Period Price Calculation:

Calculate the Period Price for December 2009 using a Base Price from March 2009 of \$0.82/Pound for 1,000 Pounds of ASTM A709 (AASHTO M270) Grade A36 Structural Steel Plate.

The Period Price Date is December 2009. From the PPI website*, the Period Price Index = 218.0.

The Base Price Date is March 2009. From the PPI website*, the Base Price Index = 229.4.

Index Factor = Period Price Index / Base Price Index = $218.0 / 229.4 = 0.950$

Period Price = Base Price X Index Factor = $\$0.82/\text{Pound} \times 0.950 = \$0.78/\text{Pound}$

Since $\$0.82 - \$0.78 = \$0.04$ is less than 5% of \$0.82, no price adjustment is required.

If the \$0.04 difference shown above was greater than 5% of the Base Price, then the price adjustment would be 1,000 Pounds X \$0.04/Pound = \$40.00. Since the Period Price of \$0.78/Pound is less than the Base Price of \$0.82/Pound, indicating a drop in the price of steel between the bid and the delivery of material, a credit of \$40.00 would be owed to MassDOT. When the Period Price is higher than the Base Price, the price adjustment is owed to the Contractor.

* To access the PPI website and obtain a Base Price Index or a Period Price Index, go to

<http://data.bls.gov/cgi-bin/srgate>

End of example.

The Contractor will be paid for unfabricated structural steel and unfabricated reinforcing steel under the respective contract pay items for all components constructed of either structural steel or reinforced Portland cement concrete under their respective Contract Pay Items.

Price adjustments, as herein provided for, will be paid separately as follows:

Structural Steel

Pay Item Number 999.449 for positive (+) pay adjustments (payments to the Contractor)

Pay Item Number 999.457 for negative (-) pay adjustments (credits to MassDOT Highway Division)

Reinforcing Steel

Pay Item Number 999.466 for positive (+) pay adjustments (payments to the Contractor)

Pay Item Number 999.467 for negative (-) pay adjustments (credits to MassDOT Highway Division)

No price adjustment will be made for price changes after the Contract Completion Date, unless the MassDOT Highway Division has approved an extension of Contract Time for the Contract.

TABLE

Steel Type	Price per Pound	
1	ASTM A615/A615M Grade 60 (AASHTO M31 Grade 60 or 420) Reinforcing Steel	\$0.76
2	ASTM A27 (AASHTO M103) Steel Castings, H-Pile Points & Pipe Pile Shoes (See Note below	\$1.06
3	ASTM A668 / A668M (AASHTO M102) Steel Forgings	\$1.06
4	ASTM A108 (AASHTO M169) Steel Forgings for Shear Studs	\$1.12
5	ASTM A709/A709M Grade 36 / AASHTO M270M/M270 Grade 36 or 250 Structural Steel Plate	\$1.18
6	ASTM A709/A709M Grade 36 / AASHTO M270M/M270 Grade 36 or 250 Structural Steel Shapes	\$1.10
7	ASTM A709/A709M Grade 50 / AASHTO M270M/M270 Grade 50 or 345 Structural Steel Plate	\$1.18
8	ASTM A709/A709M Grade 50 / AASHTO M270M/M270 Grade 50 or 345 Structural Steel Shapes	\$1.10
9	ASTM A709/A709M Grade 50WT / AASHTO M270M/M270 Grade 50WT or 345WT Structural Steel Plate	\$1.22
10	ASTM A709/A709M Grade 50WT / AASHTO M270M/M270 Grade 50WT or 345WT Structural Steel Shapes	\$1.12
11	ASTM A709/A709M Grade 50W / AASHTO M270M/M270 Grade 50W 345W Structural Steel Plate	\$1.22
12	ASTM A709/A709M Grade 50W / AASHTO M270M/M270 Grade 50W or 345W Structural Steel Shapes	\$1.12
13	ASTM A709/A709M Grade HPS 50W / AASHTO M270M/M270 Grade HPS 50W or 345W Structural Steel Plate	\$1.30
14	ASTM A709/A709M Grade HPS 70W / AASHTO M270M/M270 Grade HPS 70W or 485W Structural Steel Plate	\$1.37
15	ASTM A514/A514M-05 Grade HPS 100W / AASHTO M270M/M270 Grade HPS 100W or 690W Structural Steel Plate	\$2.10
16	ASTM A992/A992M Grade 50S / AASHTO M270M/M270 Grade 50S or 345S Structural Steel Plate	\$1.22
17	ASTM A992/A992M Grade 50S / AASHTO M270M/M270 Grade 50S or 345S Structural Steel Shapes	\$1.12
18	ASTM A276 Type 316 Stainless Steel	\$6.24
19	ASTM A240 Type 316 Stainless Steel	\$6.24
20	ASTM A148 Grade 80/50 Steel Castings (See Note below.)	\$2.16
21	ASTM A53 Grade B Structural Steel Pipe	\$1.38
22	ASTM A500 Grades A, B, 36 & 50 Structural Steel Pipe	\$1.38
23	ASTM A252, Grades 240 (36 KSI) & 414 (60 KSI) Pipe Pile	\$1.09
24	ASTM 252, Grade 2 Permanent Steel Casing	\$1.09
25	ASTM A36 (AASHTO M183) for H-piles, steel supports and sign supports	\$1.17
26	ASTM A328 / A328M, Grade 50 (AASHTO M202) Steel Sheetpiling	\$2.06
27	ASTM A572 / A572M, Grade 50 Sheetpiling	\$2.06
28	ASTM A36/36M, Grade 50	\$1.18
29	ASTM A570, Grade 50	\$1.17
30	ASTM A572 (AASHTO M223), Grade 50 H-Piles	\$1.18
31	ASTM A1085 Grade A (50 KSI) Steel Hollow Structural Sections (HSS), heat-treated per ASTM A1085 Supplement S1	\$1.38
32	AREA 140 LB Rail and Track Accessories	\$0.69

NOTE: Steel Castings are generally used only on moveable bridges. Cast iron frames, grates and pipe are not "steel" castings and will not be considered for price adjustments.

END OF DOCUMENT

THIS PAGE IS INTENTIONALLY LEFT BLANK

DOCUMENT 00880

Revised January 12, 2022



DEPARTMENT OF LABOR

Employment Standards Administration

MINIMUM WAGES FOR FEDERAL AND FEDERALLY ASSISTED CONTRACTS

THIS PAGE INTENTIONALLY LEFT BLANK

"General Decision Number: MA20220017 10/07/2022

Superseded General Decision Number: MA20210017

State: Massachusetts

Construction Type: Highway

County: Bristol County in Massachusetts.

HIGHWAY CONSTRUCTION PROJECTS

Note: Contracts subject to the Davis-Bacon Act are generally required to pay at least the applicable minimum wage rate required under Executive Order 14026 or Executive Order 13658.

Please note that these Executive Orders apply to covered contracts entered into by the federal government that are subject to the Davis-Bacon Act itself, but do not apply to contracts subject only to the Davis-Bacon Related Acts, including those set forth at 29 CFR 5.1(a)(2)-(60).

If the contract is entered	. Executive Order 14026
into on or after January 30,	generally applies to the
2022, or the contract is	contract.
renewed or extended (e.g., an	. The contractor must pay
option is exercised) on or	all covered workers at
after January 30, 2022:	least \$15.00 per hour (or
	the applicable wage rate
	listed on this wage
	determination, if it is
	higher) for all hours

Addendum No. 3, December 30, 2022

	spent performing on the
	contract in 2022.
If the contract was awarded on	. Executive Order 13658
or between January 1, 2015 and	generally applies to the
January 29, 2022, and the	contract.
contract is not renewed or	. The contractor must pay
all	covered workers at least
extended on or after January	\$11.25 per hour (or the
30, 2022:	applicable wage rate
listed	on this wage
determination,	if it is higher) for all
	hours spent performing on
	that contract in 2022.

The applicable Executive Order minimum wage rate will be adjusted annually. If this contract is covered by one of the Executive Orders and a classification considered necessary for performance of work on the contract does not appear on this wage determination, the contractor must still submit a conformance request.

Additional information on contractor requirements and worker protections under the Executive Orders is available at <https://www.dol.gov/agencies/whd/government-contracts>.

Modification Number	Publication Date
0	01/07/2022
1	02/25/2022
2	04/22/2022
3	08/05/2022
4	09/02/2022
5	10/07/2022

* ELEC0103-003 09/01/2022

	Rates	Fringes
ELECTRICIAN (Includes Traffic Signalization).....	\$ 58.28	35.47

ENGI0004-021 12/01/2021

	Rates	Fringes
POWER EQUIPMENT OPERATOR		
GROUP 1.....	\$ 51.38	31.10
GROUP 2.....	\$ 50.83	31.10

FOOTNOTE FOR POWER EQUIPMENT OPERATORS:

A. PAID HOLIDAYS: New Year's Day, Washington's
 Birthday,
 Labor Day, Memorial Day, Independence Day, Patriot's Day,
 Columbus Day, Veteran's Day, Thanksgiving Day, Christmas
 Day

POWER EQUIPMENT OPERATORS CLASSIFICATIONS

Group 1: Backhoe/Excavator/Trackhoe; Bobcat/Skid
 Steer/Skid
 Loader; Broom/Sweeper; Crane; Gradall; Loader; Paver
 (Asphalt, Aggregate, and Concrete); Post Driver
 (Guardrail/Fences)
 Group 2: Bulldozer; Grader/Blade; Milling Machine; Roller

IRON0007-029 03/16/2022

	Rates	Fringes
IRONWORKER, ORNAMENTAL.....	\$ 50.60	39.20

LABO0133-001 06/01/2022

	Rates	Fringes
LABORER (Concrete Surfacers)	\$ 36.31	26.64

LABO0385-001 06/01/2018

	Rates	Fringes
LABORER		
Common or General	\$ 33.25	22.92
Fence Erection	\$ 33.50	22.92

LABO0721-001 06/01/2018

	Rates	Fringes
LABORER (Guardrail		
Installation)	\$ 33.50	22.92

LABO0876-002 06/01/2018

	Rates	Fringes
LABORER (Landscape)	\$ 33.25	22.92

PAIN0035-023 07/01/2019

	Rates	Fringes
PAINTER (Steel)	\$ 50.66	30.90

SUMA2014-007 01/11/2017

	Rates	Fringes
CEMENT MASON/CONCRETE FINISHER...	\$ 56.70	21.08

Addendum No. 3, December 30, 2022

IRONWORKER, REINFORCING.....	\$ 42.13	18.15
IRONWORKER, STRUCTURAL.....	\$ 45.19	17.30
LABORER: Asphalt, Includes Raker, Shoveler, Spreader and Distributor.....	\$ 34.72	16.01
LABORER: Concrete Saw (Hand Held/Walk Behind).....	\$ 44.43	14.18
LABORER: Jack Hammer.....	\$ 35.32	18.48
OPERATOR: Forklift.....	\$ 64.67	0.00
OPERATOR: Mechanic.....	\$ 48.74	11.79
OPERATOR: Piledriver.....	\$ 42.56	17.34
PAINTER: Spray (Linestriping)....	\$ 47.30	6.42
TRAFFIC CONTROL: Flagger.....	\$ 23.00	20.44
TRAFFIC CONTROL: Laborer-Cones/ Barricades/Barrels - Setter/Mover/Sweeper.....	\$ 53.35	12.78
TRUCK DRIVER: Concrete Truck....	\$ 33.69	15.79
TRUCK DRIVER: Dump Truck.....	\$ 39.03	12.89
TRUCK DRIVER: Flatbed Truck.....	\$ 48.53	0.00

WELDERS - Receive rate prescribed for craft performing
operation to which welding is incidental.

=====
=====

Note: Executive Order (EO) 13706, Establishing Paid Sick
Leave
for Federal Contractors applies to all contracts subject to
the

Davis-Bacon Act for which the contract is awarded (and any solicitation was issued) on or after January 1, 2017. If this contract is covered by the EO, the contractor must provide employees with 1 hour of paid sick leave for every 30 hours they work, up to 56 hours of paid sick leave each year. Employees must be permitted to use paid sick leave for their own illness, injury or other health-related needs, including preventive care; to assist a family member (or person who is like family to the employee) who is ill, injured, or has other health-related needs, including preventive care; or for reasons resulting from, or to assist a family member (or person who is like family to the employee) who is a victim of, domestic violence, sexual assault, or stalking. Additional information on contractor requirements and worker protections under the EO is available at <https://www.dol.gov/agencies/whd/government-contracts>.

Unlisted classifications needed for work not included within the scope of the classifications listed may be added after award only as provided in the labor standards contract clauses (29CFR 5.5 (a) (1) (ii)).

The body of each wage determination lists the classification and wage rates that have been found to be prevailing for the cited type(s) of construction in the area covered by the wage determination. The classifications are listed in alphabetical

order of ""identifiers"" that indicate whether the particular rate is a union rate (current union negotiated rate for local), a survey rate (weighted average rate) or a union average rate (weighted union average rate).

Union Rate Identifiers

A four letter classification abbreviation identifier enclosed in dotted lines beginning with characters other than ""SU"" or ""UAVG"" denotes that the union classification and rate were prevailing for that classification in the survey. Example: PLUM0198-005 07/01/2014. PLUM is an abbreviation identifier of the union which prevailed in the survey for this classification, which in this example would be Plumbers. 0198 indicates the local union number or district council number where applicable, i.e., Plumbers Local 0198. The next number, 005 in the example, is an internal number used in processing the wage determination. 07/01/2014 is the effective date of the most current negotiated rate, which in this example is July 1, 2014.

Union prevailing wage rates are updated to reflect all rate changes in the collective bargaining agreement (CBA) governing this classification and rate.

Survey Rate Identifiers

Classifications listed under the ""SU"" identifier indicate that no one rate prevailed for this classification in the survey and the published rate is derived by computing a weighted average

rate based on all the rates reported in the survey for that classification. As this weighted average rate includes all rates reported in the survey, it may include both union and non-union rates. Example: SULA2012-007 5/13/2014. SU indicates the rates are survey rates based on a weighted average calculation of rates and are not majority rates. LA indicates the State of Louisiana. 2012 is the year of survey on which these classifications and rates are based. The next number, 007 in the example, is an internal number used in producing the wage determination. 5/13/2014 indicates the survey completion date for the classifications and rates under that identifier.

Survey wage rates are not updated and remain in effect until a new survey is conducted.

Union Average Rate Identifiers

Classification(s) listed under the UAVG identifier indicate that no single majority rate prevailed for those classifications; however, 100% of the data reported for the classifications was union data. EXAMPLE: UAVG-OH-0010 08/29/2014. UAVG indicates that the rate is a weighted union average rate. OH indicates the state. The next number, 0010 in the example, is an internal number used in producing the wage determination. 08/29/2014 indicates the survey completion date for the classifications and rates under that identifier.

A UAVG rate will be updated once a year, usually in January of each year, to reflect a weighted average of the current negotiated/CBA rate of the union locals from which the rate is based.

WAGE DETERMINATION APPEALS PROCESS

1.) Has there been an initial decision in the matter? This can be:

- * an existing published wage determination
- * a survey underlying a wage determination
- * a Wage and Hour Division letter setting forth a position on a wage determination matter
- * a conformance (additional classification and rate) ruling

On survey related matters, initial contact, including requests for summaries of surveys, should be with the Wage and Hour National Office because National Office has responsibility for the Davis-Bacon survey program. If the response from this initial contact is not satisfactory, then the process described in 2.) and 3.) should be followed.

With regard to any other matter not yet ripe for the formal process described here, initial contact should be with the Branch of Construction Wage Determinations. Write to:

Branch of Construction Wage Determinations
Wage and Hour Division
U.S. Department of Labor
200 Constitution Avenue, N.W.
Washington, DC 20210

2.) If the answer to the question in 1.) is yes, then an interested party (those affected by the action) can request review and reconsideration from the Wage and Hour Administrator
(See 29 CFR Part 1.8 and 29 CFR Part 7). Write to:

Wage and Hour Administrator
U.S. Department of Labor
200 Constitution Avenue, N.W.

Washington, DC 20210

The request should be accompanied by a full statement of the interested party's position and by any information (wage payment data, project description, area practice material, etc.) that the requestor considers relevant to the issue.

3.) If the decision of the Administrator is not favorable, an interested party may appeal directly to the Administrative Review Board (formerly the Wage Appeals Board). Write to:

Administrative Review Board
U.S. Department of Labor
200 Constitution Avenue, N.W.
Washington, DC 20210

4.) All decisions by the Administrative Review Board are final.

=====
=====

END OF GENERAL DECISIO"

SUMMARY OF POTENTIALLY IMPACTING RELEASES (Continued)

- Response actions included the removal of sediments and oily water from stormwater catch basins, the excavation and removal of impacted soil, and the removal, treatment, and disposal of impacted groundwater.
- Constituents of concern for the site were petroleum-related volatile organic compounds (VOCs), polycyclic aromatic hydrocarbons (PAHs), and aliphatic and aromatic volatile petroleum hydrocarbons (VPH) and extractable petroleum hydrocarbons (EPH).
- Depth to groundwater ranged from 3 to 10 feet.
- A Permanent Solution with No Conditions was submitted for the site in 2016.
- Excavation for utilities between approximately Sta 122+25 and Sta 123+00 on the new baseline of Dean Street may encounter contaminated soil and/or groundwater.

③

NPDES STORMWATER POLLUTION PREVENTION PLAN

The Contractor shall provide the required SWPPP for review as directed in the Superseding Order of Conditions issued by the Massachusetts Department of Environmental Protection. The Contractor shall also provide any reports generated by personnel complying with the construction general permit to the City of Taunton Conservation Commission and MassDEP. No additional payments will be made for the additional recipients.

NOTIFICATION OF FUNDING SOURCES FOR WORK TO BE PAID BY OTHERS

This contract contains work that shall be paid by the *City of Taunton*. The said *City* shall be responsible for construction costs associated with a Non-Participating Agreement with MassDOT.

③ SUPERSEDING ORDER OF CONDITIONS

The Contractor shall abide by all conditions imposed on the project by the Superseding Order of Conditions (SOC) issued by the Massachusetts Department of Environmental Protection (MassDEP). The Contractor shall provide contact information for Contractor personnel where contact information is requested.

Most work required by the SOC shall utilize contract items or, if no item exists for the work, shall be incidental to various items of the project. Work where costs shall be incidental include performing an as-built survey stamped by a Professional Engineer or Land Surveyor and the Contractor providing assistance to MassDOT in securing the Certificate of Compliance at the end of construction. However, several conditions and parts of conditions will not be performed by the Contractor, but by MassDOT or its consultants. These conditions include Special Conditions 27, 36 and 37, and specific work performed by the Environmental Monitor included in the paragraphs below.

The role of the Environmental Monitor will be performed by MassDOT. The Environmental Monitor shall have the authority to require modifications to existing erosion and sedimentation controls, require additional controls as they deem necessary, and require that erosion or sedimentation problems be addressed immediately. The EM shall have stop-work authority in the event of non-compliance with the Superseding Order of Conditions

The scope of this work will be limited to Special Conditions 22, 25 (Attendance at the PreCon only), 32 (Oversight of the dewatering activities), 34 (Inspection and approval of the erosion and sedimentation controls prior to the commencement of work), 46 (The Contractor is still required to perform all work under Item 756.), 48 (Approval of dewatering methods and location only), 54 and 60 (Oversight only).

Riverfront Restoration Area

Work for the riverfront restoration area contains multiple activities/tasks described under Item 755.40 that are required of the contractor. Many of these activities/tasks are paid for under other items in the contract. The contractor shall be aware of this work and shall include the costs for the activities/tasks done under the riverfront restoration area under these other items.

Addendum No. 3, December 30, 2022

THIS PAGE INTENTIONALLY LEFT BLANK

ITEM 751.7**COMPOST BLANKET****CUBIC YARD**

The work under this Item shall conform to the relevant provisions of Subsection 751 and M1.06.0 Organic Soil Additives of the Standard Specifications and the following:

Work shall consist of furnishing and pneumatically applying compost as a thin mulch blanket (1/2- 1 inch depth) over prepared soil to provide temporary soil stabilization and organic matter for plant growth.

SUBMITTALS AND MATERIALS

No materials shall be delivered until the required submittals have been approved by the Engineer. Delivered materials shall match the approved samples. Approval of test results does not constitute final acceptance.

Contractor shall submit to the Engineer samples and certified test results no sooner than 60 days prior to application of compost. Vender certification that material delivered meets the test results shall be submitted if requested.

Compost may be a blended product of compost and fine wood chips. No kiln-dried wood, construction debris or ground palette is allowed. Material shall meet the following criteria:

- Organic matter content shall be minimum 30 percent (dry weight basis)
- Moisture content shall be 30-60 percent (wet weight basis)
- Bulk Density <1000 lb/cy
- pH shall be 5.5-7.5
- Conductivity shall be a maximum of 4 mmhos
- Stability test shall produce a maximum of 8mg CO₂-C/gram of organic material per day
- Particle size shall not exceed ¾ inch
- Compost may be a blended product of compost and fine wood chips.

Compost testing shall be by a laboratory approved by the US Compost Council using the Testing Method for the Examination of Compost and Composting (TMECC) protocols.

The Engineer shall approve the Contractor's equipment for application.

CONSTRUCTION METHODS

Application of compost material shall not begin until the Engineer has approved the site and soil conditions. Soil preparation shall be as specified under the applicable item for soil placement or for seeding. The Contractor shall notify the Engineer when areas are ready for inspection and application of compost.

Compost blanket shall be pneumatically applied (blown on) to a minimum depth of one half to one inch. Where shown on the plans or when directed by the Engineer depth may be increased to provide berms for sediment control or to otherwise prevent slope erosion.

When compost blanket is proposed with seeding, seed shall be broadcast and shall occur in conjunction with compost blanket, as specified under the relevant item for seeding.

Addendum No. 3, December 30, 2022

ITEM 751.7 (Continued)

When compost blanket is proposed for areas with planting, compost (and seed if applicable) shall be applied after planting. If compost and seed occur prior to planting, areas shall be regraded and compost and seed reapplied to the satisfaction of the Engineer and at the Contractor's expense.

METHOD OF MEASUREMENT AND BASIS OF PAYMENT

Item 751.7 will be measured and paid for at the Contract unit price per Cubic Yard which price shall include all labor, materials, equipment, and all incidental costs required to complete the work of pneumatically applying compost.

Surface preparation of substrate receiving compost blanket shall be compensated under the applicable item for placement of loam, sand, ordinary borrow, wetland soil, topsoil rehandled and spread, tilled existing soil, or other specified substrate.

Seeding will be compensated for under the appropriate seeding items.

ITEM 755.40**RIVERFRONT RESTORATION AREA****LUMP SUM**

The work under this item shall conform to the relevant provisions of Subsection 101, 770 and 771 of the Standard Specifications and the following:

Work under this item shall include furnishing materials, construction, and maintenance for the Riverfront Restoration Area as shown on the drawings and as required by the Engineer. The Riverfront Restoration Area shall hereafter be referred to as the Restoration Area. All work shall be in coordination with an approved Wetland Specialist as specified under that item and as required by the Superseding Order of Conditions.

The Restoration Area shall be constructed as early in the construction phase as is feasible unless otherwise approved by the Engineer, specified herein, or specified in permit conditions and approvals. The construction schedule shall be appropriate to the planting and seeding season (see below). Changes to this schedule will require written approval from the Engineer.

DESCRIPTION OF WORK

Construction of the Restoration Area shall be completed as shown on the drawings at the following location(s):

Approximate Location: STA. 112+25 TO STA. 115+10 RT

Area: 49,640 SF

The Restoration Area shall be constructed to meet the requirements of all associated permits and certifications, including relevant performance standards of the Massachusetts Wetlands Protection Act (MGL C. 131, s40), Section 401 Water Quality Certification, and Section 404, U.S. Army Corps of Engineers Permit.

The Contractor is responsible for the protection and preservation of natural areas adjacent to the Restoration Area both within and outside the project limits and for the duration of the Contract; including but not limited to damage to soils or vegetation due to erosion, sedimentation, compaction, trampling, vehicles, storage of materials, or other negligence and shall be repaired to the satisfaction of the Engineer at the Contractor's expense.

The Wetland Specialist overseeing the Restoration Area construction work shall not be from the same company as that which is performing planting, seeding, or participating in any aspect of the Restoration Area construction.

SUBMITTALS - DOCUMENTS

Invasive Plant Management Strategy: The invasive plant control strategy for the Restoration Area should be submitted as part of the Invasive Plant Management Strategy and paid for under Item 102.33.

Request for Conditional Acceptance: As specified below, a letter requesting Conditional Acceptance of the work and the site conditions shall be submitted to the Engineer.

ITEM 755.40 (Continued)

Request for Certificate of Compliance (Partial or Full): As specified below, shall be submitted to the Engineer for distribution to appropriate regulatory agencies.

Request for Final Acceptance: As specified below, a letter requesting Final Acceptance of the work and the site conditions shall be submitted to the Engineer.

Monitoring Reports: Reports shall be submitted to the Engineer as specified below. Reports shall be compensated under Items 755.75 and 755.76.

SUBMITTALS - MATERIAL**Seed Mixes**

Certificate of Materials from the supplier shall be submitted 30 days prior to seeding and must be approved prior to ordering materials. Seed species listed on the certificate shall include ecotype region (i.e., *Asclepias incarnata*, PA Ecotype).

Seed tags from the bags of seed used shall be submitted to the Engineer at the time of seeding. Seed tags shall include ecotype region and species, guaranteed percentages of purity, weed content and germination of the seed, and the net weight. Seed tags shall match the Certificate of Materials, include the name of the supplier, and date material was sent.

Bill of lading or notarized Certificate of Compliance from the Supplier serving as proof of purchase shall be submitted if requested by the Engineer. Document shall include date of sale, quantity, lot number, and address of Supplier. This shall match the seed tags. Notary shall not work for either the contractor or seed supplier.

Plant Certification

Plant Certification shall be per the applicable requirements of Subsection 771, PLANTING TREES, SHRUBS AND GROUND COVER, of the Standard Specifications. The nursery source shall certify the provenance or origin of all plants.

Other Material: Submittals shall be per the respective item.

MATERIALS**Sediment Control Barrier and Erosion Prevention Measures**

Sediment control barriers shall be per Item 767.121.

Plants

Plant material shall conform to the applicable requirements of Section 771, PLANTING TREES, SHRUBS AND GROUND COVER, of the latest edition of the Standard Specifications and as amended below.

ITEM 755.40 (Continued)

Plants shall be native species, not cultivars. To the extent possible, plants shall originate from the applicable EPA Level III Ecoregion.

Plant species and sizes to be included in the Restoration Area shall be as specified on the plans and as directed by the Wetland Specialist.

Requests for substitutions shall be submitted in writing to the Engineer for review by the Wetland Specialist, MassDOT Landscape Architect, and, if required, the relevant regulatory agency at least thirty (30) days prior to planting. All proposed substitutes shall be in conformance with the requirements herein and suitable for the site conditions.

Transplanting and plant material collected from the wild is prohibited unless approved in writing by the Engineer. Plants shall be selected from certified nurseries that have been inspected by state and/or federal agencies.

Seed Mixes

Seeding shall conform to the Standard Specifications Section M6, ROADSIDE DEVELOPMENT MATERIALS.

Seed - Wetland Mix – Part Shade

<u>Botanical Name</u>	<u>Common Name</u>	<u>% PLS By Weight</u>
Grass		
Poa palustris	Fowl Bluegrass	25.00%
Elymus riparius	Riverbank Wild Rye	19.00%
Carex lurida	Shallow Sedge	17.00%
Carex vulpinoidea	Fox Sedge	10.00%
Cinna arundinacea	Sweet Woodreed	5.00%
Sparganium eurycarpum	Giant Bur Reed Eco PA	4.00%
Carex scoparia	Broom sedge	4.00%
Carex lupulina	Hop Sedge	4.00%
Scirpus polyphyllus	Many Leaved Bulrush	3.00%
Juncus effusus	Soft Rush	2.50%
Carex intumescens	Bladder Sedge	2.00%
Sparganium americanum	Burrweed	2.00%
Scirpus cyperinus	Woolgrass	1.00%
Carex crinita	Fringed Sedge	1.00%
Juncus tenuis	Path Rush	0.50%
		<u>100.00%</u>

Species ecotype shall be as native to New England region as possible.

Seeding Rate

Apply this mix at 20 lbs PLS/acre.

ITEM 755.40 (Continued)**Seed – Understory Shrub Mix**

<u>Botanical Name</u>	<u>Common Name</u>	<u>% PLS by Weight</u>
Shrubs		
Lindera benzoin	Northern Spicebush	33.40%
Viburnum lentago	Nannyberry Viburnum	19.30%
Hamamelis virginiana	Witch Hazel	13.60%
Cornus amomum	Silky Dogwood	12.50%
Cornus racemosa	Gray Dogwood	11.50%
Viburnum dentatum	Arrowwood Viburnum	7.50%
Ilex verticillata	Common Winterberry	1.60%
Aronia melanocarpa	Black Chokeberry	0.50%
		<u>100.00%</u>

Seeding Rate

Apply this mix at 10 lbs PLS / acre on areas of less than 3:1 slope and 30 lbs PLS / acre on areas of greater than 3:1 slope.

Species ecotype shall be as native to New England region as possible. Any species substitutions shall be with a species having similar characteristics and function. Substitutions must be approved by MassDOT Landscape Design Section per the documentation submittal process.

Fertilizer

Fertilizers shall not be used.

Water

The Contractor shall provide water and all equipment required at no extra cost. Water shall be suitable for irrigation and free from ingredients harmful to plants and wildlife. Water from the adjacent water bodies or waterways shall not be utilized. It is the Contractor's responsibility to correct injury or damage due to the lack of water, too much water, or use of contaminated water.

Compost Blanket for Seeding

Compost Blanket shall be used for seeding. Compost Blanket shall meet the material and submittal requirements of that Item and shall be applied as specified below. Compost Blanket shall be compensated under that item.

ITEM 755.40 (Continued)**CONSTRUCTION METHODS & SEQUENCE****Site Protection Measures****Minimizing Damage**

The Contractor shall plan and execute operations in a manner minimizing the amount of excavated and exposed fill or other foreign materials that could be washed or otherwise carried into the Restoration Area and nearby resource areas.

Construction of and access to the Restoration Area shall minimize damage to existing vegetation and soils as specified herein. Damage to soils or vegetation shall be repaired to the satisfaction of the Engineer at the Contractor's expense.

Sediment Barriers

Placement: Sediment barriers shall be installed along the downslope perimeter of the Restoration Area beginning and ending in the surrounding upland so that no disturbed soil can enter adjacent wetlands or waters. Sediment barriers shall be in place and approved by the Engineer prior to work commencing. No work shall take place outside the barriers.

Maintenance: The Contractor shall ensure that all sediment barriers function as intended at all times per the specifications of those respective items.

Existing Trees to Remain

Tree protection shall be per the relevant specifications and as shown on the plans or as required by the Engineer. To protect the root systems of existing trees to remain, the access route may be adjusted as required.

Trees to be retained as snags (upright dead or dying trees left for wildlife habitat) within or adjacent to the Restoration Area shall be as directed by the Wetland Specialist or Landscape Architect during the initial site walk. Trees to remain as snags shall be clearly marked prior to clearing. Trees that pose a potential fall hazard (i.e., are near a roadway) should have limbs and trunk cut such that the tree does not pose a fall hazard.

Coarse woody debris in the form of cut trees, stumps, logs, and brush shall be incorporated as directed by the Wetland Specialist or Landscape Architect. On-site material from the project shall be selected and marked by the Wetland Specialist, retained on the project site, and placed as specified below under Placement of Coarse Woody Debris.

All trees, stumps, or brush not specified to remain shall be removed and shall not be stockpiled in the wetland resource areas while awaiting disposal.

Work shall be coordinated with Clearing or Tree Removal Items and compensated under that Item.

ITEM 755.40 (Continued)**PRE-RIVERFRONT RESTORATION AREA SITE WALK**Delineating the Restoration Area and Access Route

The Contractor shall stake out the Restoration Area boundaries and the intended access route and set grade stakes for approval by the Wetland Specialist and Engineer. Following staking and demarcation of areas, the Engineer and Wetland Specialist shall approve or modify as necessary the limits of work, the access route, proposed location of sediment barriers, proposed location of tree protection fence, and review the proposed construction methods.

As part of the approval process, the Wetland Specialist shall mark trees to be converted to snags, select coarse woody debris to be retained for re-use, and select rocks or other elements to be used for habitat features.

Invasive Plants

As part of the initial site walk, the proposed Restoration Area shall be inventoried for invasive plants. Invasive plants shall be addressed as described herein under Invasive Plant Management.

INVASIVE PLANT MANAGEMENTExisting Invasive Species

A significant number of invasive species are present throughout the parcel. Invasive species are interspersed with native vegetation. There are currently seven (7) primary invasive species onsite. In general, the invasive species are evenly distributed throughout the property, with the exception of Multiflora rose, which, while present throughout the Restoration Area, has established three dense patches identified on the Riverfront Restoration Plan.

Invasive species identified include:

- Norway maple (*Acer platanoides*);
- Multiflora rose (*Rosa multiflora*);
- Asiatic bittersweet (*Celastrus orbiculatus*);
- Burning bush (*Euonymus alatus*);
- European privet (*Ligustrum vulgare*);
- Bush honeysuckle (*Lonicera spp*); and
- Japanese barberry (*Berberis thunbergii*).

Invasive plants identified along the steep sections of Bank **should not** be removed.

Manual/Mechanical Treatment

Manual and mechanical means of invasive plant species control may include digging, hand pulling and cutting of plants found in small amounts where feasible. Large areas of mature invasive plants may be removed with smaller tracked equipment. If possible, the entire plant should be uprooted to reduce resprouting.

ITEM 755.40 (Continued)

Mechanical means of invasive plant control shall minimize impacts to existing grades as much as possible. Care shall be taken to avoid impacts to the root systems of existing trees to the maximum extent practicable. Disturbed areas shall be restored to match existing grades.

Removed plant material shall be properly disposed offsite. Any weed regrowth shall be monitored throughout the growing season and approved control methods shall be applied at the appropriate time for the duration of the contract.

Chemical Treatment

Chemical management of invasive plant species includes application of herbicides. Herbicide applications allow for a targeted approach to control vegetation. Methods including Cut-stump application and stem injection combine manual and chemical methods to remove standing vegetation and directly treat the stumps. Foliar spray may be applied to treat areas of invasive vegetation following regrowth if necessary following attempts to use cut stump and injection methods.

Invasive species may be treated with herbicides including glyphosate or triclopyr formulas based on the species being treated. These herbicides shall be applied at the lowest labeled application rate. The type of formula will be selected by the contractor responsible for the work, however, it will be selected from the list of formulations approved for use near waterbodies.

In accordance with the regulations at 333 CMR 11.04 (4), No herbicide shall be applied on or within ten feet of a Wetland or Water Over a Wetland, within ten feet of the mean annual high-water line of any River, or within ten feet of any Certified Vernal Pool. The use of herbicides within 100 feet of the Taunton River is permitted on an as-needed basis with approval from the Wetland Scientist, subject to the prohibition on use of herbicide within 10 feet of the Taunton River. Hand pulling and mechanical means shall be used to the maximum extent practicable prior to the use of herbicides and justification for the use of herbicides shall be documented in the monitoring reports.

Management Strategy

Due to the widespread presence of multiflora rose, and other similar invasive species, mechanical removal will be the primary method of initial control within the Restoration Area. Larger woody species may also be treated with an application of cut-stump or stem injection methods following initial regrowth. Following removal of the existing standing vegetation within the Restoration Area, regrowth will be managed through mechanical means, or through application of herbicide if deemed necessary by the Wetland Scientist, with treatment methods of cut stump and injection being the preferred chemical treatment method.

Cut material should be removed from the Site and managed in accordance with State and Federal regulations, as well as managed to prevent spreading seed. If seeds/fruit are present, the material shall be handled carefully. See Table 1 below for species-specific management and disposal strategies and methods.

ITEM 755.40 (Continued)**Table 1. Invasive Species Management Strategy by Species**

Common Name / Scientific Name	Management Strategy	Species Seed Production Notes
Norway maple / <i>Acer platanoides</i>	Two (2) large trees located along the eastern limit of the Restoration Area will be cut by mechanical means and removed. If necessary, resprouts will be managed through chemical treatment using cut stem methods.	Norway maple fruits mature in the summer and can reproduce through fruit and seed.
Multiflora rose / <i>Rosa multiflora</i>	Mechanical removal/ excavation will be the primary method used to initially remove this species. If stumps cannot be removed, they will be cut, then stumps will be treated using a glyphosate formula through either the cut-stump, or stem injection method. Regrowth may be treated using a glyphosate formula if necessary.	Multiflora rose flowers in May/June and the fruits mature during summer and persist through the winter. This species reproduces through fruit, seed, and plant fragments.
Asiatic bittersweet / <i>Celastrus orbiculatus</i>	Mechanical removal/ excavation will be the primary method used to remove this species. Regrowth may be treated using a glyphosate formula if necessary.	Bittersweet germinates in late spring, and fruits mature in the late summer and fall. This species reproduces through fruit, seed, and plant fragments.
Burning bush / <i>Euonymus alatus</i>	Mechanical removal/ excavation will be the primary method used to remove this species. If stumps cannot be removed, they will be cut, then stumps will be treated using a glyphosate formula through either the cut-stump, or stem injection method. Regrowth will be removed by hand or treated with an application of herbicide if necessary.	Burning bush flowers in the late spring and the fruits mature during summer. This species reproduces through fruit and seed.
European privet / <i>Ligustrum vulgare</i>	Mechanical removal/ excavation will be the primary method used to remove this species. Regrowth will be removed by hand or treated with an application of herbicide if necessary.	European privet flowers in late spring to early summer. This species then produces many clusters of small fruits that emerge in summer and ripen over winter.
Bush Honeysuckle / <i>Lonicera spp</i>	Mechanical removal/ excavation will be the primary method used to remove this species. Regrowth will be removed by hand or treated with an application of herbicide if necessary.	Honeysuckle flowers June/July and fruits from September to November which persist through the winter.

ITEM 755.40 (Continued)

Common Name / Scientific Name	Management Strategy	Species Seed Production Notes
Japanese Barberry <i>Berberis thunbergii</i>	Mechanical removal/ excavation will be the primary method used to remove this species. Regrowth will be removed by hand or treated with an application of herbicide if necessary.	Barberry flowers in the spring and the fruits mature July to October and persist through the winter. This species reproduces through fruit and seed.

Prevention of New Invasive Species Establishment

In order to prevent additional invasive plants from being introduced to the Restoration Area, soil amendments shall be transported in clean vehicles to minimize exotic/invasive seeds being brought from other sites to the Restoration Area. Documentation of the soil's origin shall be submitted with the report provided to the MassDEP upon completion of the restoration planting along with a statement from the source of the soil amendments.

RESTORING VEGETATION AND HABITAT FEATURESAdditional Habitat Features

In addition to vegetated habitat improvements, physical features shall be installed within the Restoration Area at the direction of the Wetland Specialist to provide shelter and den opportunities for wildlife. Snags located within the Restoration Area will be maintained to preserve important perch and shelter habitat. Materials removed from the retaining wall installation area such as fallen logs and rock piles shall be relocated to the Restoration Area to provide shelter for smaller wildlife.

Planting

Following the invasive species control, the Restoration Area shall be planted. Planting shall conform to SECTION 771 PLANTING TREES, SHRUBS AND GROUNDCOVER of the Division I Standard Specifications and as amended below.

Planting Season shall be May 15-June 15 and September 1-November 1 unless otherwise specified in applicable permit conditions.

Prior to planting, the Wetland Specialist shall approve the condition of the plant material and the method of installation and shall oversee the planting work. Restoration Area shall be planted in the dry. Plants shall be placed according to the planting details, at the direction of the Wetland Specialist. Final plant locations shall be determined on site and located with regard to expected hydrology, plant growth characteristics, habitat desired, and water protection.

ITEM 755.40 (Continued)

Plant material shall be installed as soon as possible after delivery. Plants stored on-site prior to installation shall be stored in the shade and watered twice daily up until time of installation. Plants showing signs of stress or compromised health may be rejected by the Engineer or Wetland Specialist and shall be replaced at the Contractor's expense.

Plant material shall be furnished and installed as indicated including all labor, materials, plants, equipment, incidentals, re-setting of plants (frost heaves, etc.), irrigation, re-planting and clean up. If previously approved species are not available at the time of planting, the Wetland Specialist may propose substitutions relative to species, size, and quantities for review and approval by the MassDOT Landscape Architect. Upon approval by MassDOT, substitutions shall be approved by the regulating authority, if and as necessary. Provisions shall be made for a growth warranty of at least two (2) calendar years from the date of Conditional Acceptance as described below or as required by permits.

Seeding

Following planting the Restoration Area shall be seeded as follows:

- Hand broadcast seed with Compost Blanket pneumatically applied at the same time to ensure light cover of soil topdressing over seed.

If spring conditions are drier than usual, supplemental watering may be required. If sowing during the summer months, supplemental watering will likely be required until germination.

Seeding limits for different seed mixes shall be determined by the Wetland Specialist.

PLANT ESTABLISHMENT AND INVASIVE MANAGEMENT

Plants shall be watered as necessary to maintain healthy establishment. Plants that fail by September 1 after spring planting or by May 15 after fall planting shall be replaced within the immediate or next planting period and at the Contractor's expense.

Seeding that fails to establish according to the conditions of acceptance below shall be overseeded as required by the Engineer. Washouts and channels shall be repaired and stabilized prior to overseeding. Excessive weed growth shall be pulled out by the roots or, with approval from the Engineer, cut prior to over-seeding. Soil repair and weed control are incidental to this item.

Invasive Plants: Corrective measures shall be taken to remove or treat invasive plant species in the Restoration Area. Invasive plants shall include those listed as invasive by Massachusetts Invasive Plant Advisory Group (MIPAG) and the US Army Corp of Engineer's New England District's Compensatory Mitigation Guidance

If chemical treatment of invasive plants is necessary, the strategy for treatment shall be as determined under Item 102.3 Invasive Plant Management Strategy. That strategy shall be approved Wetland Specialist and all applicable permits and permitting agencies. Chemical application under 102.33 Invasive Plant Management Strategy shall be compensated under that item and shall be for the duration of the contract only.

ITEM 755.40 (Continued)**CONDITIONAL ACCEPTANCE OF WORK**

Conditional Acceptance shall indicate approval of the Riverfront Restoration Area construction work and agreement that work has been done according to plan or modified as approved.

Upon completion of construction, the Contractor shall submit a Request for Conditional Acceptance that includes a brief narrative from the Wetland Specialist demonstrating that the Restoration Area construction work was done according to plans (or how modified) and meets required permit conditions. The narrative shall include photo-documentation of pre-construction conditions as well as soil work, planting, and seeding. Seed tags shall be submitted as part of the Request for Conditional Acceptance.

Upon receipt of a Request for Conditional Acceptance, the Engineer, the Wetland Specialist, and regulatory representative (if required) shall assess the Restoration Area and surrounding areas. At a minimum, the following conditions shall be included in the narrative and reviewed as part of the on-site assessment of whether:

- Specified seed mix has been seeded. If inspected 30 or more days after seeding, seeded species in the restoration area shall show signs of good germination and healthy growth.
- Planted woody species meet specifications and are establishing well.
- Soils are stabilized and there is no sediment in the wetland and no channeling of slopes.
- The invasive plants have been controlled in the Restoration Area.

Upon approval that the work meets the above conditions, MassDOT will issue a letter of Conditional Acceptance. If the Restoration work is not approved, MassDOT will issue a rejection letter requiring corrective actions. The Wetland Specialist shall recommend corrective actions. Work not approved shall be addressed by the Contractor at no extra cost.

Wetland Specialist shall be compensated under Item 755.75.

Erosion of adjacent slopes or the flow of sediments into the wetland or River between Conditional and Final Acceptance shall be immediately addressed by the Contractor.

REQUEST FOR CERTIFICATE OF COMPLIANCE

A request for a Certificate of Compliance (Partial or Full) pursuant to the Massachusetts Wetlands Protection Act regulations shall be prepared and submitted to MassDOT within 30 days following Conditional Acceptance.

The Request for Certificate of Compliance shall include the following:

- A brief narrative of the work on company letterhead signed by the Wetland Specialist. The narrative shall be prepared as an MS Word document and shall include a substantive explanation that demonstrates compliance with EACH relevant permit condition. The narrative shall note variations from the originally permitted design.
- Other documents as required.

ITEM 755.40 (Continued)**FINAL ACCEPTANCE OF WORK**

Following two full growing seasons, the Contractor shall submit a Request for Final Acceptance. Submittal shall include a brief narrative of conditions. Upon receiving the Request, the Engineer, Contractor, Wetland Specialist and regulatory representative (if required) shall assess the Restoration Area. Final Acceptance will initiate the start of the Monitoring Period.

The following conditions shall be inspected and approved for acceptance and payment.

- Achieve at least 75% areal coverage of native species,
- Show survival of at least 75% of planted shrubs and trees,
- Contain no more than 10% coverage of non-native and/or invasive species and,
- Show no evidence of significant erosion or sedimentation.

Plants and seed must be installed no later than the end of May to be considered a full growing season.

If the restoration work does not meet the above condition and is not approved, MassDOT will issue a rejection letter requiring corrective action. The Wetland Specialist shall recommend corrective actions. Work not approved will be addressed by the Contractor at no extra cost.

Wetland Specialist shall be compensated under Item 755.75.

MONITORING REPORTS FOR REGULATORY COMPLIANCE

Post-Riverfront Restoration Area construction Monitoring Reports shall be completed and submitted by the Wetland Specialist as specified and compensated under Item 755.76 Wetland Monitoring Reports.

Monitoring of the Restoration Area by the Wetland Scientist required in Condition 23 of the Superseding Order of Conditions will be required twice a year for two full growing seasons following the cessation of work within the Restoration Area or for the duration of the Contract, whichever is longer. Spring monitoring shall occur no later than the end of May and fall monitoring shall occur no later than the end of October. Monitoring reports shall be submitted within one month of the monitoring efforts and shall include a comprehensive list of observed plant species, approximate coverage and location of dominant plant species, a plan depicting the specific location of invasive species, a description of invasive species treatments and effectiveness, representative photos, and recommendations for corrective measures as needed to meet the requirements of the Final Plan. Any other relevant observations including but not limited to evidence of wildlife use and erosion or sedimentation shall also be included.

If at the end of the required monitoring period, the requirements have not been met and the success of the Restoration area has not been achieved as determined by the Monitoring Reports, the Contractor shall provide corrective measures. All costs associated with corrective measures and plant replacement shall be incidental to this item with no additional compensation.

ITEM 755.40 (Continued)**BASIS OF PAYMENT**

Item 755.35 will be paid for at the Contract unit price per Lump Sum, which price shall include all labor, materials, equipment, submittals, maintenance, all required site preparation, seeding of the wetland and shrub mixes, restoration of the Isolated Vegetated Wetland, manual/mechanical removal of invasive plants, watering, Request for Certificate of Compliance, and all incidental costs necessary to complete the work as required.

Payment shall be as follows:

- 60% upon Conditional Acceptance.
- 20% after receipt and acceptance of Certificate of Compliance by the Engineer and once all permit construction requirements have been met and approved.
- 20% upon Final Acceptance.

Tree and Plant Protection Fence will be paid under Item 102.521

Herbicide Treatment of Invasive Plants will be paid under Item 102.3

Invasive Plant Management Strategy will be paid under Item 102.33

Compost Blanket will be paid under Item 751.7

Wetland Specialist will be paid under Item 755.75

Wetland Monitoring Reports will be paid under Item 755.76

Seed – Riverbank Mix – Part Shade will be paid under Item 765.442

Sediment Control Barrier will be paid under Item 767.121

Plantings will be paid under their respective bid items.

THIS PAGE INTENTIONALLY LEFT BLANK

ITEM 755.75**WETLAND SPECIALIST****HOUR**

Work under this Item shall be for services of a Wetland Scientist, Wetland Ecologist, Restoration Ecologist, or other professional with similar qualifications hereafter referred to as the “Wetland Specialist.”

“Wetland Mitigation” shall be used herein for applicable wetland work. For this project, applicable wetland work is for: Item 755.35 Inland Wetland Replication Area (creation of a new wetland) and Item 755.45 Wetland Restoration (restoration after temporary impacts).

- ③ “Riverfront Area Restoration” shall be used herein for all work to construct the Riverfront Area Restoration. Contractor shall use Contract items to construct the restoration area. For this project, applicable Riverfront Restoration work is for: Item 755.40 Riverfront Restoration Area (Restoration of Riverfront Area).

The Wetland Specialist shall demonstrate knowledge and expertise to coordinate and oversee all work associated with the Wetland Mitigation as defined herein, as shown on the Plans, as required by permits, and as specified under the relevant Wetland Mitigation items.

- ③ Regulatory monitoring reports following Final Acceptance of the Wetland Mitigation and Riverfront Restoration shall be per Item 755.76, Wetland Monitoring Reports.

For all onsite work, the Wetland Specialist shall sign in and sign out with the Engineer.

The Wetland Specialist shall not be from the same company as the company responsible for planting, seeding, and/or maintaining the wetland.

QUALIFICATIONS

The Wetland Specialist shall have a minimum of five (5) years of experience with construction and monitoring of wetland mitigation areas similar in size, type, and complexity to the Contract mitigation. When required by permits, at least ten (10) years of experience may be required. The Wetland Specialist shall be thoroughly versed in the Commonwealth of Massachusetts Wetlands Protection Act (MGL C.131, s.40), U.S. Army Corps of Engineers New England District Compensatory Mitigation Guidance, and all other relevant regulations of the Massachusetts Department of Environmental Protection and the U.S. Army Corps of Engineers New England District.

SUBMITTALS - QUALIFICATION

Within sixty (60) days following the Notice to Proceed, the Contractor shall provide proof of qualifications for the Wetland Specialist to the Engineer for approval. Submittals shall include, but not be limited to, the following:

- Resume of the individual on-site implementing the Wetland Specialist work. If the Wetland Specialist changes over the course of the project, the new individual shall submit resume and qualifications for approval 30 days prior to doing any work on-site.
- Resume of any personnel working on-site in place of the Wetland Specialist. Individual shall be approved prior to work on-site.
- Narrative describing the company, its expertise, technical qualifications, and experience with wetland construction.

③ Addendum No. 3, December 30, 2022

ITEM 755.75 (Continued)

- At least three (3) references from prior work of a similar nature completed in the last five (5) years and by the individuals who will perform the work. Provide contact information for each reference including address, phone number and email.
- A summary of each reference project including nature of the work, project size, dates, and period of construction and monitoring, methodologies used, and summary of success (or not) in terms of meeting performance objectives. Summary shall include a minimum of one before and one after photo for each project.

Qualifications shall be reviewed and approved by MassDOT, the Taunton Conservation Commission and the Massachusetts Department of Environmental Protection.

SUBMITTALS – DOCUMENTATION AND REPORTS③ **Wetland and Riverfront Restoration Area Construction Oversight**

③ Wetland Specialist shall provide documentation of pre-existing conditions and wetland and Riverfront Restoration Area construction as specified below and as part of fulfilling the Scope of Work described below. Documentation shall include photos that are clear and legible. Photos are incidental to this item.

- ***Site Walk Prior to Disturbance and Construction of Wetlands:*** Provide brief assessment with photos, including documentation of the existing wetlands to be impacted (both permanent and temporary), proposed wetland replication area, and reference/model wetland areas (typically an adjacent undisturbed wetland or the existing wetland to be impacted). Photos of existing wetlands that will be temporarily impacted shall include a view from at least 3 angles.
- ***Excavation and Grading:*** Documentation shall include minimum of two photos of the excavated wetland and two photos after final grading prior to planting and seeding. For restoration areas, photos shall show soil preparation (i.e, tilling and grading), if applicable.
- ***Approval of Subgrades:*** The Wetland Specialist shall inspect the sub-grade of the Replication Area to ensure that proper hydrology is likely to be established and shall provide the Engineer with written confirmation and photographs upon completion of subgrade excavation work. Written confirmation shall include recommended field adjustments, based on field observations, to achieve the desired hydrology and designed wetland system.
- ***Planting and Seeding:*** Provide assessment and photos of vegetation upon completion of planting and seeding work.
- ***Data logger output from Monitoring Wells*** shall be submitted with reports, if applicable and requested.

③ Wetland and Riverfront Restoration Area construction documentation and reports shall be submitted with Request for Conditional Acceptance and for the Order of Conditions, Water Quality Certifications, and other regulatory permits as required.

③ Addendum No. 3, December 30, 2022

ITEM 755.75 (Continued)

- Excavation, Soil Placement, Grading for Replication Areas
 - Approve excavated depth and grading for appropriate wetland hydrology, subsoil preparation, and finished grade of placed wetland soil.
 - Adjust grades as required and approve microtopography. If grades need to be adjusted, submit an RFI to the Engineer.
 - If requested by the Engineer, the Wetland Specialist shall inspect stockpiled wetland soil for moisture content and signs of undesirable weeds.
- Soil Protection and Restoration Measures for Restoration Areas
 - Review and approve methods of soil protection and restoration if required.
 - Confirm decompaction will adequately restore appropriate wetland hydrology. If decompaction measures need to be adjusted, submit an RFI to the Engineer.
- ③ • Re-vegetation of Mitigation Area and Riverfront Restoration Area Mitigation
 - Placement of woody material to be re-used.
 - Verify seed used complies with specifications and site conditions, determine limits for wetland seeding based on elevations, approve seeding and mulching methods, and collect seed tags to submit with Request for Conditional Acceptance.
 - Review planting methods (if applicable) prior to installation and oversee layout of wetland plants.

Conditional Acceptance

- ③ Upon completion of construction of the wetland and Riverfront Restoration Area, as part of the Request for Conditional Acceptance, the Wetland Specialist shall provide a brief narrative demonstrating that the wetland and riverfront restoration area construction work was done according to plans (or how modified) and meets the conditions required for acceptance as specified under the Wetland Mitigation items. Submittal shall include a report and photo documentation of pre-construction conditions, construction work, seeding, planting, and other work as specified under the Wetland Mitigation items and as required by environmental permits. Photos of completed Wetland Restoration areas and Riverfront Restoration Area shall include the same views as the pre-construction reference photos.

- ③ Upon receipt of a Request for Conditional Acceptance, the Engineer, the Wetland Specialist and regulatory representative (if required) shall assess the Wetland Mitigation and Riverfront Restoration Area and surrounding area to ensure that it meets the conditions specified under the Wetland Mitigation items and as required by environmental permits.

- ③ Upon approval, MassDOT will issue a letter of Conditional Acceptance. If the Wetland Mitigation and Riverfront Restoration Area work is not approved, MassDOT will issue a rejection letter requiring corrective action. The Wetland Specialist shall recommend corrective actions.

Request For Certificate Of Compliance

If required, a Request for Certificate of Compliance shall be prepared and submitted to the Engineer immediately following Conditional Acceptance. Request shall be as specified under the relevant Wetland Mitigation items.

ITEM 755.75 (Continued)**Request For Final Acceptance**

- ③ Following one full growing season, the Wetland Specialist shall provide a brief narrative of the status of the Wetland Mitigation and Riverfront Restoration Area to be submitted with the Request for Final Acceptance.

- ③ Upon receipt of the Request, the Engineer, the Wetland Specialist, and regulatory representative (if required) shall assess the Wetland Mitigation and surrounding area to ensure that it meets the conditions specified under the relevant Wetland Mitigation items and Riverfront Restoration Area.

- ③ If the Wetland Mitigation and Riverfront Restoration Area is not approved, MassDOT will issue a rejection letter requiring corrective action. The Wetland Specialist shall recommend corrective actions.

METHOD OF MEASUREMENT

Item 755.75 Wetland Specialist shall be measured per hour for on-site service provided by the Wetland Specialist.

Work shall include all inspections, photos, submittals, and associated tasks for construction and restoration oversight, narratives for Conditional and Final Acceptance, Request for Certificate of Compliance (Partial or Full) if required, documentation required for permits, and all other work specified above. Payment shall not include travel time or time spent off-site on reports. Decimal Pay Limits will be 0.25 hours.

BASIS OF PAYMENT

Item 755.75 Wetland Specialist shall be paid at the Contractor bid price for each hour, or fraction thereof, spent on-site to perform the work as described above. Reports and photo documentation are required for payment.

Post wetland construction reports shall be per Item 755.76, Wetland Monitoring Reports.

ITEM 755.76**WETLAND MONITORING REPORTS****LUMP SUM**

- ③ Work under this item shall be for the submittal of Wetland Monitoring Reports following the completion of wetland and riverfront restoration area construction and shall include all inspections, photos, and other work required to complete those reports as specified herein.

“Wetland Mitigation” shall be used herein for applicable wetland work, whether Wetland Replication (creation of a new wetland) and/or Wetland Restoration (restoration after temporary impacts).

- ③ “Riverfront Restoration Area” shall be used herein for all work to construct the Riverfront Restoration Area.

The Contractor shall retain the services of a Wetland Scientist, Wetland Ecologist, Restoration Ecologist, or other professional with similar qualifications, hereafter referred to as the “Wetland Specialist,” to complete the Wetland Monitoring reports. Wetland Specialist shall meet requirements specified under Item 755.75 Wetland Specialist.

- ③ All on-site Wetland Specialist services required to complete the construction and revegetation of the wetland replication and Riverfront Restoration Area, including preparation and submission of monitoring reports during construction, shall be per Item 755.75 Wetland Specialist.

SCOPE OF WORK

- ③ Post-Construction Wetland and Riverfront Restoration Area Monitoring Reports

- ③ Final Acceptance of the wetland and riverfront restoration area construction work as specified under Items 755.35, 755.40 and 755.45 shall initiate the beginning of the Monitoring Period.

Inspections and reports shall be performed to ensure compliance with mitigation requirements defined under the relevant Wetland Mitigation items and with all applicable environmental permits. Monitoring reports shall cover the following:

- Identification of all plant species present
 - Percent cover for each plant species and overall percent surface area cover by indigenous wetland plant species for replication area and upland
 - Description of the viability, health, and vigor of installed plants as well as volunteer plant species within the replication areas
 - Description of remedial measures taken to ensure criteria are met
 - Depth to apparent water table and/or depth of surface inundation, both as measured from the soil surface and data loggers, as appropriate.
 - A conclusion regarding the success of the wetland mitigation area relative to the performance standards at 310 CMR 10.55(4)(b) (unless varied), the design plans, and performance criteria established by MADEP in the variance conditions (when applicable), and the reference wetland.
- ③
- A conclusion regarding the success of the Riverfront Restoration Area relative to the performance standards at 310 CMR 10.58(4), the design plans, and performance criteria established by MADEP, and the reference riverfront area.
 - Recommendation for a corrective plan of action if needed.

③			
③			
③	<u>ITEM 776.523</u>	<u>MAPLE - RED 2-2.5 INCH CALIPER</u>	<u>EACH</u>
	<u>ITEM 776.567</u>	<u>MAPLE - RED 5-7 FEET / #10</u>	<u>EACH</u>
	<u>ITEM 777.263</u>	<u>OAK - SWAMP 2-2.5 INCH CALIPER</u>	<u>EACH</u>
③	<u>ITEM 777.442</u>	<u>PLANETREE - AMERICAN 2-2.5 INCH CALIPER</u>	<u>EACH</u>
	<u>ITEM 777.747</u>	<u>WILLOW – BLACK 5-7 FEET / #10</u>	<u>EACH</u>
③	<u>ITEM 778.47</u>	<u>CRABAPPLE - SPRING SNOW 1.5-2 INCH CALIPER</u>	<u>EACH</u>
	<u>ITEM 781.284</u>	<u>HAWTHORN – THORNLESS COCKSPUR</u>	<u>EACH</u>
		<u>1.5-2 INCH CALIPER</u>	
	<u>ITEM 783.051</u>	<u>SERVICEBERRY – SHADBLOW 8-10 FOOT CLUMP</u>	<u>EACH</u>
	<u>ITEM 783.467</u>	<u>TUPELO 2-2.5 INCH CALIPER</u>	<u>EACH</u>
③			
③	<u>ITEM 788.015</u>	<u>ALDER SHRUB – SPECKLED 3-4 FEET / #5</u>	<u>EACH</u>
③			
③	<u>ITEM 789.73</u>	<u>BUTTONBUSH 3-4 FEET / #3</u>	<u>EACH</u>
③			
③			
③	<u>ITEM 790.721</u>	<u>DOGWOOD – SILKY 3-4 FEET / #5</u>	<u>EACH</u>
③	<u>ITEM 790.725</u>	<u>DOGWOOD - GRAY 3-4 FEET / #3</u>	<u>EACH</u>
③			
③	<u>ITEM 791.035</u>	<u>ELDERBERRY 3-4 FEET / #3</u>	<u>EACH</u>
③			
③	<u>ITEM 795.013</u>	<u>VIBURNUM – ARROWWOOD 3-4 FEET / #5</u>	<u>EACH</u>
③			
③	<u>ITEM 795.187</u>	<u>WITCH HAZEL – AUTUMN BLOOMING 3-4 FEET / #5</u>	<u>EACH</u>
	<u>ITEM 795.45</u>	<u>WILLOW – SAND BAR 5 INCH PLUG</u>	<u>EACH</u>
	<u>ITEM 795.451</u>	<u>WILLOW – SAND BAR 2-3 FEET / #3</u>	<u>EACH</u>
	<u>ITEM 796.071</u>	<u>VIRGINIA CREEPER #1</u>	<u>EACH</u>
③	<u>ITEM 775.105</u>	<u>ELM – AMERICAN 1-1.5 INCH / #15</u>	<u>EACH</u>
③	<u>ITEM 775.115</u>	<u>HICKORY – SHAGBARK 1-1.5 INCH / #15</u>	<u>EACH</u>
③	<u>ITEM 777.259</u>	<u>OAK - SWAMP 1-1.5 INCH / #15</u>	<u>EACH</u>
③	<u>ITEM 783.045</u>	<u>SERVICEBERRY – SHADBLOW 3-4 FOOT CLUMP</u>	<u>EACH</u>
③	<u>ITEM 783.463</u>	<u>TUPELO 1-1.5 INCH CALIPER</u>	<u>EACH</u>
③	<u>ITEM 795.154</u>	<u>WINTERBERRY - MALE 3-4 FEET / #3</u>	<u>EACH</u>
③	<u>ITEM 795.158</u>	<u>WINTERBERRY - FEMALE 3-4 FEET / #3</u>	<u>EACH</u>

The work under these Items shall conform to the relevant provisions of Subsection 771, PLANTING TREES, SHRUBS AND GROUND COVER, of the Standard Specifications.

As indicated on the plans, plantings are schematic and shall be staked out in the field and confirmed with the MassDOT Landscape Design Section.

③ Addendum No. 3, December 30, 2022

<u>ITEM 942.181</u>	<u>W18X192J PILE</u>	<u>FOOT</u>
<u>ITEM 945.100</u>	<u>DRILLED SHAFT EXCAVATION 2.5 FOOT DIAMETER</u>	<u>FOOT</u>
<u>ITEM 945.200</u>	<u>ROCK SOCKET EXCAVATION 2.5 FOOT DIAMETER</u>	<u>FOOT</u>
<u>ITEM 945.300</u>	<u>OBSTRUCTION EXCAVATION 2.5 FOOT DIAMETER</u>	<u>FOOT</u>

- ③ The work under these Items is related to Item 996.01 and shall conform to the relevant provisions of Subsections 940 and 945 of the Standard Specifications and the following:

MATERIALS

Steel piles shall conform to the requirements of AASHTO M183 Grade 50 and conform to the relevant provisions of Subsection 940 and 960 of the Standard Specifications. All piles shall be galvanized to the limits shown on the plans. All piles to be full length and splicing of the piles is expressly forbidden.

CONSTRUCTION

The piles shall be set to account for anticipated deflection at the top of wall, true to line and grade as shown on the Plans, and/or as required. Piles shall be set by use of a temporary template to ensure that pile spacing and plumbness remain true. The temporary template will remain in place until concrete has set. The overall vertical tolerance of the wall (plumbness from top to bottom) shall not exceed 2% of the height of the wall inward and 1% of the height outward. Temporary supports shall support the soldier piles for at least 5 days before concrete panel installation begins.

The soldier piles shall be installed by placing them in 30-inch diameter predrilled holes located as shown on the Plans or required by the Engineer. Predrilled holes shall be protected when necessary, against cave-ins and displacement of surrounding soil by means of temporary steel casing or use of slurry subject to approval by the Engineer and MassDOT Environmental. Predrilling shall follow the relevant provisions of Subsection 945 and be paid under items 945.100, 945.200 and 945.300.

The soldier piles shall be installed in the drilled holes and shall be encased in 3000 psi concrete and be coated as described on the Plans. Concrete shall be paid under Item 903.

Pile testing, pile shoes and pile driving are not required. Piles are to be placed in the predrilled holes to minimum depths, as shown on the plans.

③ **METHOD OF MEASUREMENT**

- ③ Item 942.181 will be measured for payment per Subsection 940.80.
- ③ Items 945.100, 945.200, and 945.300 will be measured for payment per Subsection 945.80.

③ **BASIS OF PAYMENT**

- ③ Item 942.181 will be paid for per Subsection 940.81.
- ③ Items 945.100, 945.200, and 945.300 will be paid for per Subsection 945.81.

Project # 606024		Contract # 120178		
Location : TAUNTON				
Description : Roadway Reconstruction and Related Work (Including Signals) on a Section of Route 44 (Dean Street)				
ITEM #	QUANTITY	ITEM WITH UNIT BID PRICE WRITTEN IN WORDS	UNIT PRICE	AMOUNT
100.	1	SCHEDULE OF OPERATIONS - FIXED PRICE \$95000 AT Ninety Five Thousand Dollars LUMP SUM	\$95,000.00	\$95,000.00
101.	1.25	CLEARING AND GRUBBING AT _____ PER ACRE		
102.2	1	TREE TRIMMING AT _____ LUMP SUM		
102.3	60	HERBICIDE TREATMENT OF INVASIVE PLANTS AT _____ PER HOUR		
102.33	16	INVASIVE PLANT MANAGEMENT STRATEGY AT _____ PER HOUR		
102.521	750	TREE AND PLANT PROTECTION FENCE AT _____ PER FOOT		
102.531	16	TREE CARE - PRUNING AT _____ EACH		
102.55	16	ARBORIST AT _____ PER HOUR		
103.	16	TREE REMOVED - DIAMETER UNDER 24 INCHES AT _____ EACH		

③ Addendum No. 3, December 30, 2022

Project # 606024		Contract # 120178		
Location : TAUNTON				
Description : Roadway Reconstruction and Related Work (Including Signals) on a Section of Route 44 (Dean Street)				
ITEM #	QUANTITY	ITEM WITH UNIT BID PRICE WRITTEN IN WORDS	UNIT PRICE	AMOUNT
227.31	550	REMOVAL OF DRAINAGE PIPE SEDIMENT AT _____ PER FOOT		
227.4	55	MASONRY PLUG AT _____ PER SQUARE FOOT		
234.12	1,350	12 INCH DRAINAGE PIPE - OPTION AT _____ PER FOOT		
234.15	60	15 INCH DRAINAGE PIPE - OPTION AT _____ PER FOOT		
234.18	275	18 INCH DRAINAGE PIPE - OPTION AT _____ PER FOOT		
234.24	260	24 INCH DRAINAGE PIPE - OPTION AT _____ PER FOOT		
238.10	225	10 INCH DUCTILE IRON PIPE AT _____ PER FOOT		
242.12	4	12 INCH REINFORCED CONCRETE PIPE FLARED END AT _____ EACH		
242.18	1	18 INCH REINFORCED CONCRETE PIPE FLARED END AT _____ EACH		

Project # 606024		Contract # 120178		
Location : TAUNTON				
Description : Roadway Reconstruction and Related Work (Including Signals) on a Section of Route 44 (Dean Street)				
ITEM #	QUANTITY	ITEM WITH UNIT BID PRICE WRITTEN IN WORDS	UNIT PRICE	AMOUNT
710.3	23	BOUND - LETTERED GRANITE AT _____ EACH		
711.	3	BOUND REMOVED AND RESET AT _____ EACH		
715.	2	RURAL MAIL BOX REMOVED AND RESET AT _____ EACH		
718.2	1	FLAGPOLE REMOVED AND STACKED AT _____ EACH		
740.	42	ENGINEERS FIELD OFFICE AND EQUIPMENT (TYPE A) AT _____ PER MONTH		
745.3	2	PEDESTRIAN BUS SHELTER (INSTALLATION ONLY) AT _____ EACH		
748.	1	MOBILIZATION AT _____ LUMP SUM		
751.	610	LOAM FOR ROADSIDES AT _____ PER CUBIC YARD		
751.1	300	LOAM FOR LAWNS AT _____ PER CUBIC YARD		

③

Project # 606024		Contract # 120178		
Location : TAUNTON				
Description : Roadway Reconstruction and Related Work (Including Signals) on a Section of Route 44 (Dean Street)				
ITEM #	QUANTITY	ITEM WITH UNIT BID PRICE WRITTEN IN WORDS	UNIT PRICE	AMOUNT
751.7	160	COMPOST BLANKET AT _____ PER CUBIC YARD		
754.24	1	ATLANTIC STURGEON PROTECTION PLAN AT _____ LUMP SUM		
755.35	1	INLAND WETLAND REPLICATION AREA AT _____ LUMP SUM		
755.40	1	RIVERFRONT RESTORATION AREA AT _____ LUMP SUM		
755.45	45	WETLAND RESTORATION AT _____ PER SQUARE YARD		
755.75	200	WETLAND SPECIALIST AT _____ PER HOUR		
755.76	1	WETLANDS MONITORING REPORTS AT _____ LUMP SUM		
756.	1	NPDES STORMWATER POLLUTION PREVENTION PLAN AT _____ LUMP SUM		
765.	2,200	SEEDING AT _____ PER SQUARE YARD		

Project # 606024		Contract # 120178		
Location : TAUNTON				
Description : Roadway Reconstruction and Related Work (Including Signals) on a Section of Route 44 (Dean Street)				
ITEM #	QUANTITY	ITEM WITH UNIT BID PRICE WRITTEN IN WORDS	UNIT PRICE	AMOUNT
765.21	30	ANNUAL COVER CROP FOR NATIVE SEEDING AT _____ PER POUND		
765.442	75	SEED - RIVERBANK MIX - PART SHADE AT _____ PER POUND		
765.635	9,800	NATIVE SEEDING AND ESTABLISHMENT AT _____ PER SQUARE YARD		
767.121	6,100	SEDIMENT CONTROL BARRIER AT _____ PER FOOT		
767.2	225	HAY MULCH AT _____ PER SQUARE YARD		
767.6	40	AGED PINE BARK MULCH AT _____ PER CUBIC YARD		
769.	2,600	PAVEMENT MILLING MULCH UNDER GUARD RAIL AT _____ PER FOOT		
775.105	7	ELM - AMERICAN 1-1.5 INCH / #15 AT _____ EACH		
775.115	7	HICKORY - SHAGBARK 1-1.5 INCH / #15 AT _____ EACH		

③ Items 772.335 and 773.434 removed

Project # 606024		Contract # 120178		
Location : TAUNTON				
Description : Roadway Reconstruction and Related Work (Including Signals) on a Section of Route 44 (Dean Street)				
ITEM #	QUANTITY	ITEM WITH UNIT BID PRICE WRITTEN IN WORDS	UNIT PRICE	AMOUNT
776.523	4	MAPLE - RED 2-2.5 INCH CALIPER AT _____ EACH		
776.567	15	MAPLE - RED 5-7 FEET / #10 AT _____ EACH		
777.259	7	OAK - SWAMP 1-1.5 INCH / #15 AT _____ EACH		
777.263	2	OAK - SWAMP 2-2.5 INCH CALIPER AT _____ EACH		
777.442	5	PLANETREE - AMERICAN 2-2.5 INCH CALIPER AT _____ EACH		
777.747	9	WILLOW - BLACK 5-7 FEET / #10 AT _____ EACH		
778.47	5	CRABAPPLE - SPRING SNOW 1.5-2 INCH CALIPER AT _____ EACH		
781.284	9	HAWTHORN - COCKSPUR 1.5-2 INCH CALIPER AT _____ EACH		
783.045	12	SERVICEBERRY - SHADBLOW 3-4 FOOT CLUMP AT _____ EACH		

③ Items 776.565 and 777.325 removed

Project # 606024		Contract # 120178		
Location : TAUNTON				
Description : Roadway Reconstruction and Related Work (Including Signals) on a Section of Route 44 (Dean Street)				
ITEM #	QUANTITY	ITEM WITH UNIT BID PRICE WRITTEN IN WORDS	UNIT PRICE	AMOUNT
783.051	6	SERVICEBERRY - SHADBLOW 8-10 FOOT CLUMP AT _____ EACH		
783.463	7	TUPELO 1-1.5 INCH CALIPER AT _____ EACH		
783.467	9	TUPELO 2-2.5 INCH CALIPER AT _____ EACH		
788.015	20	ALDER SHRUB - SPECKLED 3-4 FEET / #5 AT _____ EACH		
789.73	9	BUTTONBUSH 3-4 FEET / #3 AT _____ EACH		
790.721	42	DOGWOOD - SILKY 3-4 FEET / #5 AT _____ EACH		
790.725	12	DOGWOOD - GRAY 3-4 FEET / #3 AT _____ EACH		
791.035	27	ELDERBERRY 3-4 FEET / #3 AT _____ EACH		
795.013	33	VIBURNUM - ARROWWOOD 3-4 FEET AT _____ EACH		

③ Items 785.634, 789.333, 789.635, 789.771, 789.773, 790.635, 791.031, 794.335, and 794.737 removed

Project # 606024		Contract # 120178		
Location : TAUNTON				
Description : Roadway Reconstruction and Related Work (Including Signals) on a Section of Route 44 (Dean Street)				
ITEM #	QUANTITY	ITEM WITH UNIT BID PRICE WRITTEN IN WORDS	UNIT PRICE	AMOUNT
795.154	3	WINTERBERRY - MALE 3-4 FEET / #3 AT _____ EACH		
795.158	9	WINTERBERRY - FEMALE 3-4 FEET / #3 AT _____ EACH		
795.187	26	WITCH HAZEL - AUTUMN BLOOMING 3-4 FEET AT _____ EACH		
795.45	197	WILLOW - SAND BAR 5 INCH PLUG AT _____ EACH		
795.451	66	WILLOW - SAND BAR 2-3 FEET / #3 AT _____ EACH		
796.071	45	VIRGINIA CREEPER #1 AT _____ EACH		
804.3	750	3 INCH ELECTRICAL CONDUIT TYPE NM - PLASTIC -(UL) AT _____ PER FOOT		
811.22	3	ELECTRIC HANDHOLE - SD2.022 AT _____ EACH		
811.31	5	PULL BOX 12 X 12 INCHES - SD2.031 AT _____ EACH		

③ Items 795.015 and 795.017 removed

Project # 606024		Contract # 120178		
Location : TAUNTON				
Description : Roadway Reconstruction and Related Work (Including Signals) on a Section of Route 44 (Dean Street)				
ITEM #	QUANTITY	ITEM WITH UNIT BID PRICE WRITTEN IN WORDS	UNIT PRICE	AMOUNT
816.01	1	TRAFFIC SIGNAL RECONSTRUCTION LOCATION NO. 1 AT _____ LUMP SUM		
816.02	1	TRAFFIC SIGNAL RECONSTRUCTION LOCATION NO. 2 AT _____ LUMP SUM		
816.81	1	TEMPORARY TRAFFIC CONTROL SIGNAL AT _____ LUMP SUM		
831.	250	ROADSIDE GUIDE SIGN (D6/D8) - ALUMINUM PANEL (TYPE A) AT _____ PER SQUARE FOOT		
832.	450	WARNING-REGULATORY AND ROUTE MARKER - ALUMINUM PANEL (TYPE A) AT _____ PER SQUARE FOOT		
841.1	5	SUPPORTS FOR GUIDE SIGN (D6 W/ D8-5 INCH TUBULAR POST) STEEL AT _____ EACH		
847.1	60	SIGN SUP (N/GUIDE)+RTE MKR W/1 BRKWAY POST ASSEMBLY - STEEL AT _____ EACH		
848.1	4	SIGN SUP (N/GUIDE)+RTE MKR W/2 BRKWAY POST ASSEMBLIES-STEEL AT _____ EACH		
850.41	550	ROADWAY FLAGGER AT _____ PER HOUR		

③

Project # 606024		Contract # 120178		
Location : TAUNTON				
Description : Roadway Reconstruction and Related Work (Including Signals) on a Section of Route 44 (Dean Street)				
ITEM #	QUANTITY	ITEM WITH UNIT BID PRICE WRITTEN IN WORDS	UNIT PRICE	AMOUNT
852.	1,000	SAFETY SIGNING FOR TRAFFIC MANAGEMENT AT _____ PER SQUARE FOOT		
852.11	2,900	TEMPORARY PEDESTRIAN BARRICADE AT _____ PER FOOT		
852.12	4	TEMPORARY PEDESTRIAN CURB RAMP AT _____ EACH		
853.1	8	PORTABLE BREAKAWAY BARRICADE TYPE III AT _____ EACH		
853.2	1,000	TEMPORARY BARRIER (TL-2) AT _____ PER FOOT		
853.21	250	TEMPORARY BARRIER REMOVED AND RESET AT _____ PER FOOT		
853.8	450	TEMPORARY ILLUMINATION FOR WORK ZONE AT _____ PER DAY		
854.016	40,000	TEMPORARY PAVING MARKINGS - 6 INCH (PAINTED) AT _____ PER FOOT		
854.036	6,000	TEMPORARY PAVING MARKINGS - 6 INCH (TAPE) AT _____ PER FOOT		

Project # 606024		Contract # 120178		
Location : TAUNTON				
Description : Roadway Reconstruction and Related Work (Including Signals) on a Section of Route 44 (Dean Street)				
ITEM #	QUANTITY	ITEM WITH UNIT BID PRICE WRITTEN IN WORDS	UNIT PRICE	AMOUNT
854.1	13,000	PAVEMENT MARKING REMOVAL AT _____ PER SQUARE FOOT		
856.	1,050	ARROW BOARD AT _____ PER DAY		
856.12	510	PORTABLE CHANGEABLE MESSAGE SIGN AT _____ PER DAY		
859.	71,500	REFLECTORIZED DRUM AT _____ PER DAY		
859.1	1,325	REFLECTORIZED DRUMS WITH SEQUENTIAL FLASHING WARNING LIGHTS AT _____ PER DAY		
864.02	475	PAVEMENT ARROW AND LEGENDS - TAPE AT _____ PER SQUARE FOOT		
864.04	1,500	PAVEMENT ARROWS AND LEGENDS REFLECTORIZED WHITE (THERMOPLASTIC) AT _____ PER SQUARE FOOT		
864.31	75	SLOTTED PAVEMENT MARKER ONE-WAY WHITE AT _____ EACH		
864.35	150	SLOTTED PAVEMENT MARKER TWO-WAY YELLOW/YELLOW AT _____ EACH		

Project # 606024		Contract # 120178		
Location : TAUNTON				
Description : Roadway Reconstruction and Related Work (Including Signals) on a Section of Route 44 (Dean Street)				
ITEM #	QUANTITY	ITEM WITH UNIT BID PRICE WRITTEN IN WORDS	UNIT PRICE	AMOUNT
864.41	1,025	GREEN COLORIZED PAVEMENT MARKINGS AT _____ PER SQUARE FOOT		
866.106	15,800	6 INCH REFLECTORIZED WHITE LINE (THERMOPLASTIC) AT _____ PER FOOT		
866.112	3,400	12 INCH REFLECTORIZED WHITE LINE (THERMOPLASTIC) AT _____ PER FOOT		
867.106	10,100	6 INCH REFLECTORIZED YELLOW LINE (THERMOPLASTIC) AT _____ PER FOOT		
867.112	225	12 INCH REFLECTORIZED YELLOW LINE (THERMOPLASTIC) AT _____ PER FOOT		
874.	14	STREET NAME SIGN AT _____ EACH		
874.21	2	MISCELLANEOUS SIGNS REMOVED AND RESET AT _____ EACH		
874.41	65	TRAFFIC SIGN REMOVED AND DISCARDED AT _____ EACH		
901.	330	4000 PSI, 1.5 INCH, 565 CEMENT CONCRETE AT _____ PER CUBIC YARD		

Project # 606024		Contract # 120178		
Location : TAUNTON				
Description : Roadway Reconstruction and Related Work (Including Signals) on a Section of Route 44 (Dean Street)				
ITEM #	QUANTITY	ITEM WITH UNIT BID PRICE WRITTEN IN WORDS	UNIT PRICE	AMOUNT
902.	2	3500 PSI, 1.5 INCH, 520 CEMENT CONCRETE AT _____ PER CUBIC YARD		
903.	695	3000 PSI, 1.5 INCH, 470 CEMENT CONCRETE AT _____ PER CUBIC YARD		
904.3	135	5000 PSI, 3/4 INCH, 685 HP CEMENT CONCRETE AT _____ PER CUBIC YARD		
910.1	86,073	STEEL REINFORCEMENT FOR STRUCTURES - EPOXY COATED AT _____ PER POUND		
942.181	4,900	W18X192J PILE AT _____ PER FOOT		
945.100	2,580	DRILLED SHAFT EXCAVATION 2.5 FOOT DIAMETER AT _____ PER FOOT		
945.200	1,585	ROCK SOCKET EXCAVATION 2.5 FOOT DIAMETER AT _____ PER FOOT		
945.300	290	OBSTRUCTION EXCAVATION 2.5 FOOT DIAMETER AT _____ PER FOOT		
975.1	1,002	METAL BRIDGE RAILING (3 RAIL), STEEL (TYPE S3-TL4) AT _____ PER FOOT		

③ Addendum No. 3, December 30, 2022

Project # 606024		Contract # 120178		
Location : TAUNTON				
Description : Roadway Reconstruction and Related Work (Including Signals) on a Section of Route 44 (Dean Street)				
ITEM #	QUANTITY	ITEM WITH UNIT BID PRICE WRITTEN IN WORDS	UNIT PRICE	AMOUNT
983.3	20	RIPRAP REMOVED AND RELAID AT _____ PER CUBIC YARD		
983.521	5	STREAMBED MATERIAL AT _____ PER CUBIC YARD		
986.5	20	MODIFIED ROCKFILL REMOVED AND RELAID AT _____ PER CUBIC YARD		
991.11	1	CONTROL OF WATER - STRUCTURES AT _____ LUMP SUM		
996.01	1	WALL STRUCTURE, WALL NO. 6 AT _____ LUMP SUM		
996.011	2	PRECAST HIGHWAY GUARDRAIL TRANSITION UNITS AT _____ EACH		
Total Qty: 507,951.25				

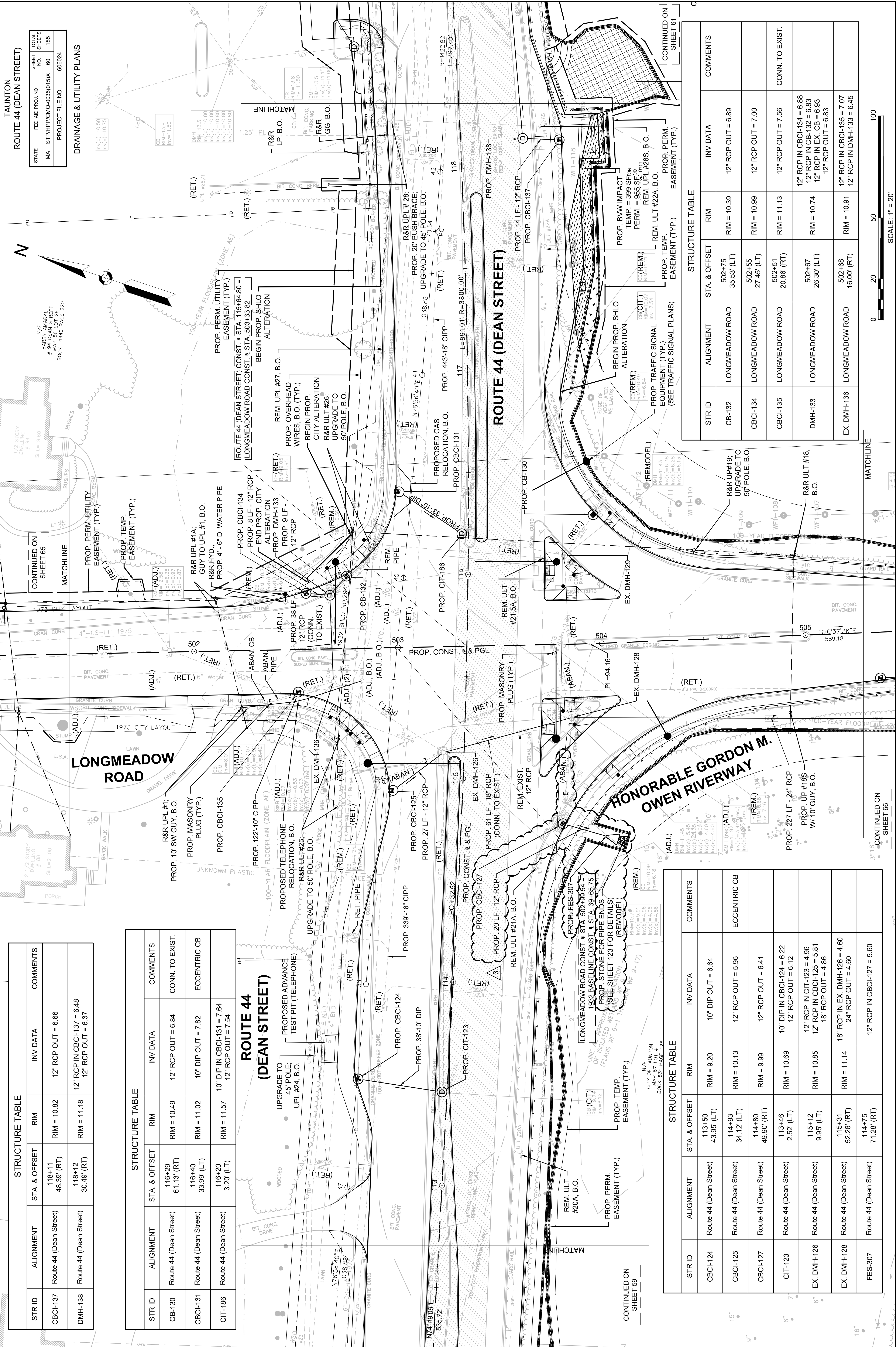
③

STRUCTURE TABLE				
STR ID	ALIGNMENT	STA. & OFFSET	RIM	INV DATA
CBCI-137	Route 44 (Dean Street)	118+11 48.39' (RT)	RIM = 10.82	12" RCP OUT = 6.66
DMH-138	Route 44 (Dean Street)	118+12 30.49' (RT)	RIM = 11.18	12" RCP IN CBCI-137 = 6.48 12" RCP OUT = 6.37

STRUCTURE TABLE				
STR ID	ALIGNMENT	STA. & OFFSET	RIM	INV DATA
CB-130	Route 44 (Dean Street)	116+29 61.13' (RT)	RIM = 10.49	12" RCP OUT = 6.84
CBCI-131	Route 44 (Dean Street)	116+40 33.99' (LT)	RIM = 11.02	10" DIP OUT = 7.82
CIT-186	Route 44 (Dean Street)	116+20 3.20' (LT)	RIM = 11.57	10" DIP IN CBCI-131 = 7.64 12" RCP OUT = 7.54

ROUTE 44
(DEAN STREET)

STR ID	ALIGNMENT	STA. & OFFSET	RIM	INV DATA
CB-130	Route 44 (Dean Street)	116+29 61.13' (RT)	RIM = 10.49	12" RCP OUT = 6.84
CBCI-131	Route 44 (Dean Street)	116+40 33.99' (LT)	RIM = 11.02	10" DIP OUT = 7.82
CIT-186	Route 44 (Dean Street)	116+20 3.20' (LT)	RIM = 11.57	10" DIP IN CBCI-131 = 7.64 12" RCP OUT = 7.54



PROP. NATIVE PLANTINGS TO BE
ARRANGED IN INFORMAL GROUPS (NOT
ROWS) WITH LARGER PLANTS CLOSER
TO THE CENTER OF THE CLUSTER AND
THE SMALLER PLANTS AT THE EDGE.
PROVIDE A STAGGERED EFFECT (TYP.)

PROVIDE TREE PROTECTION
WHERE CONSTRUCTION ACTIVITY
COMES CLOSE ENOUGH TO
POTENTIALLY DAMAGE TREES (TYP.)

POTENTIAL LOCATION
FOR SITE ACCESS

PROP. TREE PROTECTION FENCE AT
PERIMETER OF IWV (LOCATION TO BE
DETERMINED IN THE FIELD BY WETLAND
SPECIALIST). CONTRACTOR MAY NOT
STORE OR STOCKPILE MATERIALS OR
EQUIPMENT WITHIN THIS AREA

IWV SHALL BE RESTORED WITH
WETLAND SEED MIX AS PER THE
SPECIAL PROVISIONS (TYP.)

PROP. INVASIVE PLANT CONTROL
WITHIN STATE HIGHWAY LAYOUT.
RESTORE WITH COMPOST AND PART
SHADE RIVERBANK SEED MIX (TYP.)

(APPROX.) CONCENTRATED
AREA OF MULTIFLORA ROSE

100' BUFFER ZONE

LIMIT OF PROP.
RIVERFRONT
RESTORATION AREA
(APPROX. 49,640 SF)

PROP. SEDIMENT CONTROL
BARRIER (TYP.)

UPLAND AREA SHALL BE
RESTORED WITH COMPOST AND
PART SHADE RIVERBANK SEED MIX.
SUPPLEMENT WITH UNDERSTORY
SHRUB SEED MIX AS PER THE
SPECIAL PROVISIONS (TYP.)

(APPROX.) CONCENTRATED
AREA OF MULTIFLORA ROSE

NO HERBICIDE
USE WITHIN 10' OF
TAUNTON RIVER

RIVERFRONT RESTORATION NOTES

- RIVERFRONT RESTORATION TO INCLUDE CONTROL OF INVASIVE PLANT SPECIES AND INSTALLATION OF NATIVE PLANTINGS WHERE APPLICABLE.
- INVASIVE PLANT CONTROL SHALL MINIMIZE IMPACTS TO EXISTING GRADES AS MUCH AS POSSIBLE. CARE SHALL BE TAKEN TO AVOID IMPACTS TO THE ROOT SYSTEMS OF EXISTING TREES.
- UNLESS NOTED OTHERWISE, ALL DISTURBED AREAS SHALL BE RESTORED WITH COMPOST AND PART SHADE RIVERBANK SEED MIX.
- IN GENERAL, INVASIVE PLANTS ARE EVENLY DISTRIBUTED THROUGHOUT THE SITE. THIS INCLUDES MULTIFLORA ROSE, ASIATIC BITTERSWEET, EUROPEAN PRIVET, BURNING BUSH, BUSH HONEYSUCKLE, & JAPANESE BARBERRY.
- SELECT AREAS WHERE HIGH CONCENTRATIONS OF INVASIVE PLANTS WERE FOUND ARE SHOWN ON THE PLAN ABOVE.
- THE ABUNDANCE OF INVASIVE PLANT SPECIES FOUND ON SITE PROHIBIT SHOWING INDIVIDUAL INVASIVE PLANT LOCATIONS ON THIS PLAN.
- PLANT LAYOUT SHOWN ABOVE IS CONCEPTUAL. WETLAND SPECIALIST SHALL LOCATE PROPOSED PLANTS WITHIN THE RIVERFRONT RESTORATION AREA AS APPROPRIATE TO BEST RESTORE DISTURBED AREAS.
- COMPOST SHALL BE USED IN LIEU OF MULCH AROUND PROPOSED PLANTS.

UNLESS NOTED OTHERWISE,
ALL EXISTING TREES (LIVING
AND DEAD, STANDING AND
FALLEN) TO REMAIN (TYP.)

(APPROX.) CONCENTRATED
AREA OF MULTIFLORA ROSE

ROUTE 44 (DEAN STREET)

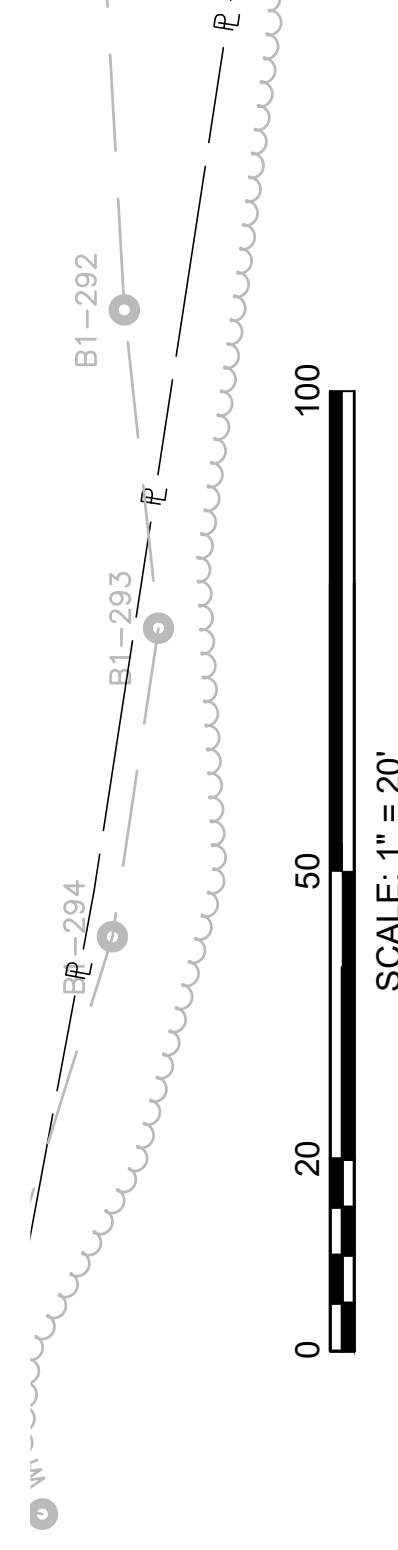
HONORABLE GORDON M. OWEN RIVERWAY

TAUNTON RIVER

STATE	FED AID PROJ. NO.	SHEET NO.	TOTAL SHEETS
MA	STPHPP/CMG-0035(015)X	113	185
PROJECT FILE NO. 006024			

RIVERFRONT RESTORATION PLAN

PLANT SCHEDULE RIVERFRONT RESTORATION AREA				
QTY.	SYMBOL	BOTANICAL NAME	COMMON NAME	NOTES
DECIDUOUS TREES				
7	AR	ACER RUBRUM	RED MAPLE	5'-7' HT. #10 CONT.
7	CA	CARYA OVATA	SHAGBARK HICKORY	1-1.5" CAL. #15 CONT.
7	QB	QUERCUS BICOLOR	SWAMP WHITE OAK	1-1.5" CAL. #15 CONT.
7	NS	NYSSA SYLVATICA	TUPELO	1-1.5" CAL. #15 CONT.
7	SN	SALIX NIGRA	BLACK WILLOW	5'-7' HT. #10 CONT.
7	UA	ULMUS AMERICANA	AMERICAN ELM	1-1.5" CAL. #15 CONT.
SHRUBS				
12	AL	ALNUS RUGOSA	SPECKLED ALDER	3'-4' HT. #5 CONT.
12	AC	AMELANCHIER CANADENSIS	SHADBLOW SERVICEBERRY	3'-4' CLUMP #15 CONT.
12	CA	CORNUS AMOMUM	SILKY DOGWOOD	3'-4' HT. #5 CONT.
12	CR	CORNUS RACEMOSA	GRAY DOGWOOD	3'-4' HT. #3 CONT.
12	HV	HAMAMELIS VIRGINIANA	WITCH HAZEL	3'-4' HT. #5 CONT.
9	IVF	ILEX VERTICILLATA (FEMALE)	COMMON WINTERBERRY (FEMALE)	3'-4' HT. #3 CONT.
3	IVM	ILEX VERTICILLATA (MALE)	COMMON WINTERBERRY (MALE)	3'-4' HT. #3 CONT.
12	SC	SAMBUCUS CANADENSIS	ELDERBERRY	3'-4' HT. #3 CONT.
12	VD	VIBURNUM DENTATUM	ARROWWOOD VIBURNUM	3'-4' HT. #5 CONT.



PROP. 48 INCH BLACK VINYL COATED CHAIN LINK FENCE WITH TOP RAIL; THE POSTS SET IN PIPE SLEEVES OR SOCKETS. THE LENGTH OF GALVANIZED PIPE SLEEVES FOR FENCE POSTS SHALL BE EQUAL TO THE DEPTH OF COPING. SEE MASSDOT STD. DWG. E404.4.0

PROP. 12 INCH HIGH CAST IN PLACE CONCRETE COPING. SEE MASSDOT STD. DWG. E302.2.0

PROP. CEMENTED STONE MASONRY WALL. SEE MASSDOT STD. DWG. E302.2.0

PROP. LOAM & SEED

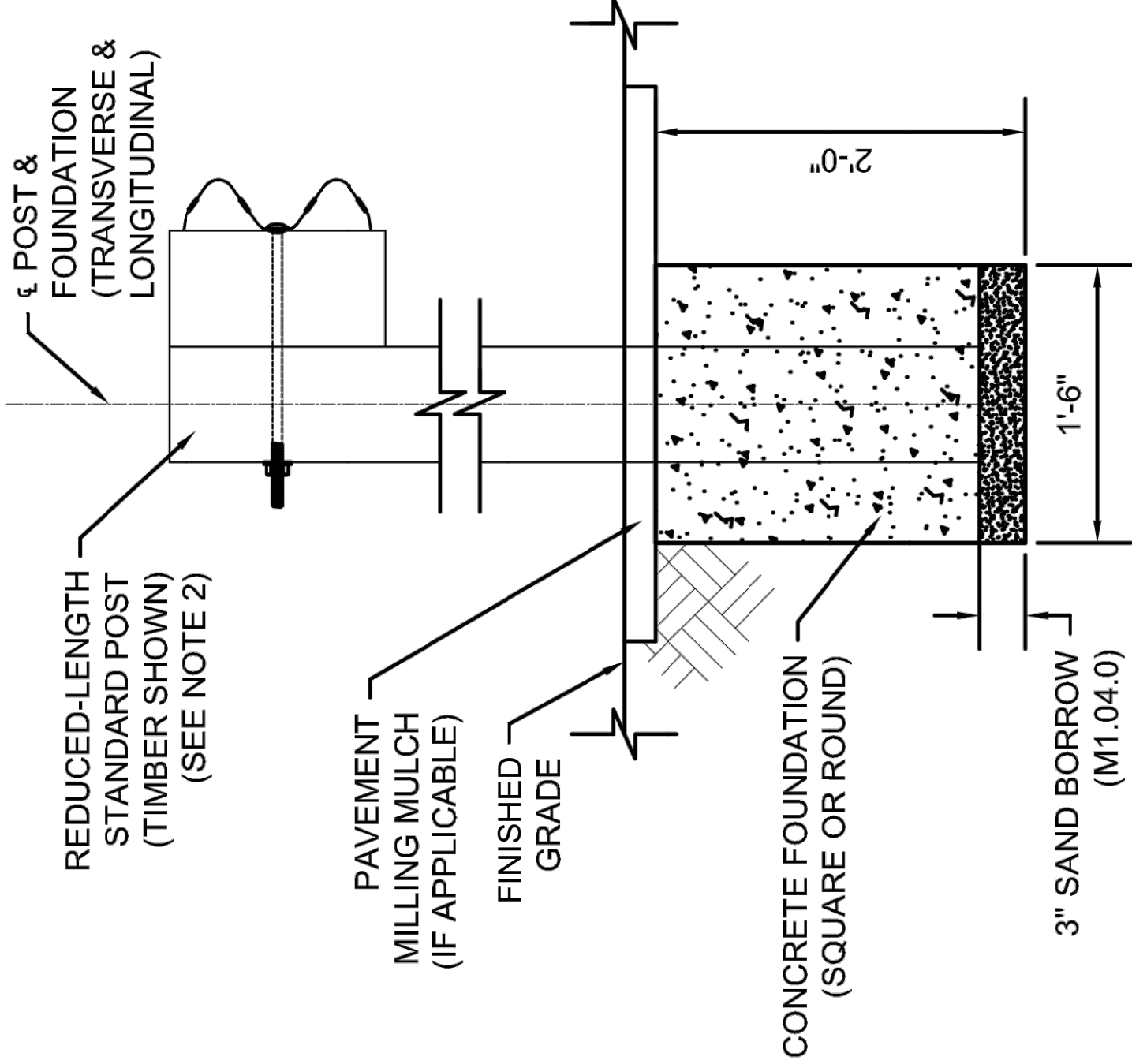
PROP. GUARDRAIL

PROP. SIDEWALK

PROP. PAVEMENT MILLING MULCH

CHAIN LINK FENCE ATTACHMENT TO RETAINING WALL

N.T.S.
STA. 116+88± RT TO STA. 118+50± RT

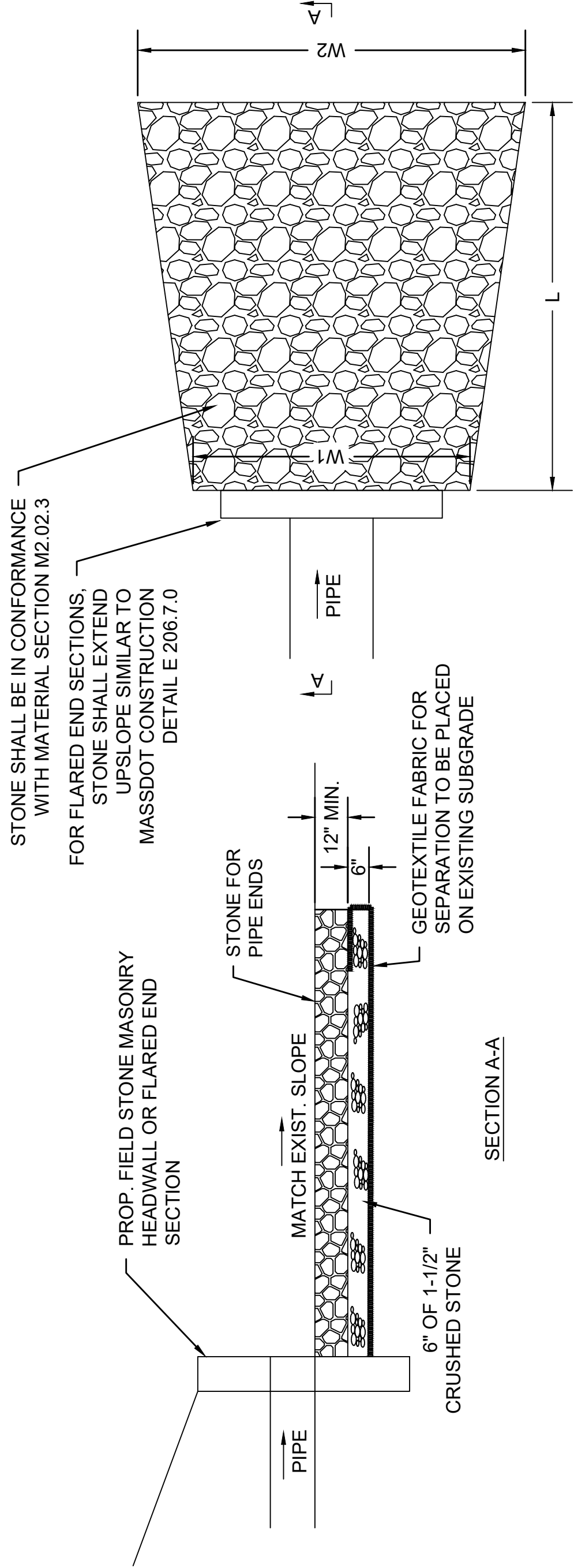


SECTION

ENCASED POST FOR SHALLOW MOUNT

NOTES:

1. WHEN THE CONSTRUCTION OF GUARDRAIL AT THE REQUIRED POST SPACING RESULTS IN POST(S) CONFLICTING WITH UNDERGROUND UTILITIES OR OTHER UNDERGROUND OBSTRUCTIONS, AN ENCASED POST MAY BE USED WHERE A 2'-0" DEPTH WILL AVOID THE CONFLICT. INSTALL WHERE SHOWN IN THE PLANS AND/OR AS-NEEDED.
2. USE A STANDARD POST WITH REDUCED LENGTH SUCH THAT THE PANEL HEIGHT IS MAINTAINED WHILE THE POST BOTTOM TERMINATES AT THE BOTTOM OF THE CONCRETE FOUNDATION AT THE TOP OF THE 3" (MIN) SAND BORROW.
3. CONCRETE FOUNDATION SHALL BE 3500 PSI, CEMENT CONCRETE (M4.02.00). AFTER CASTING THE CONCRETE, ENSURE THE SURROUNDING SOIL MATERIAL IS COMPLETELY BACKFILLED AND TAMPED TO PROVIDE FULL PASSIVE RESISTANCE.
4. ENCASED POSTS ARE NOT PERMITTED FOR CONSECUTIVE POSTS UNLESS OTHERWISE SHOWN IN THE PLANS.



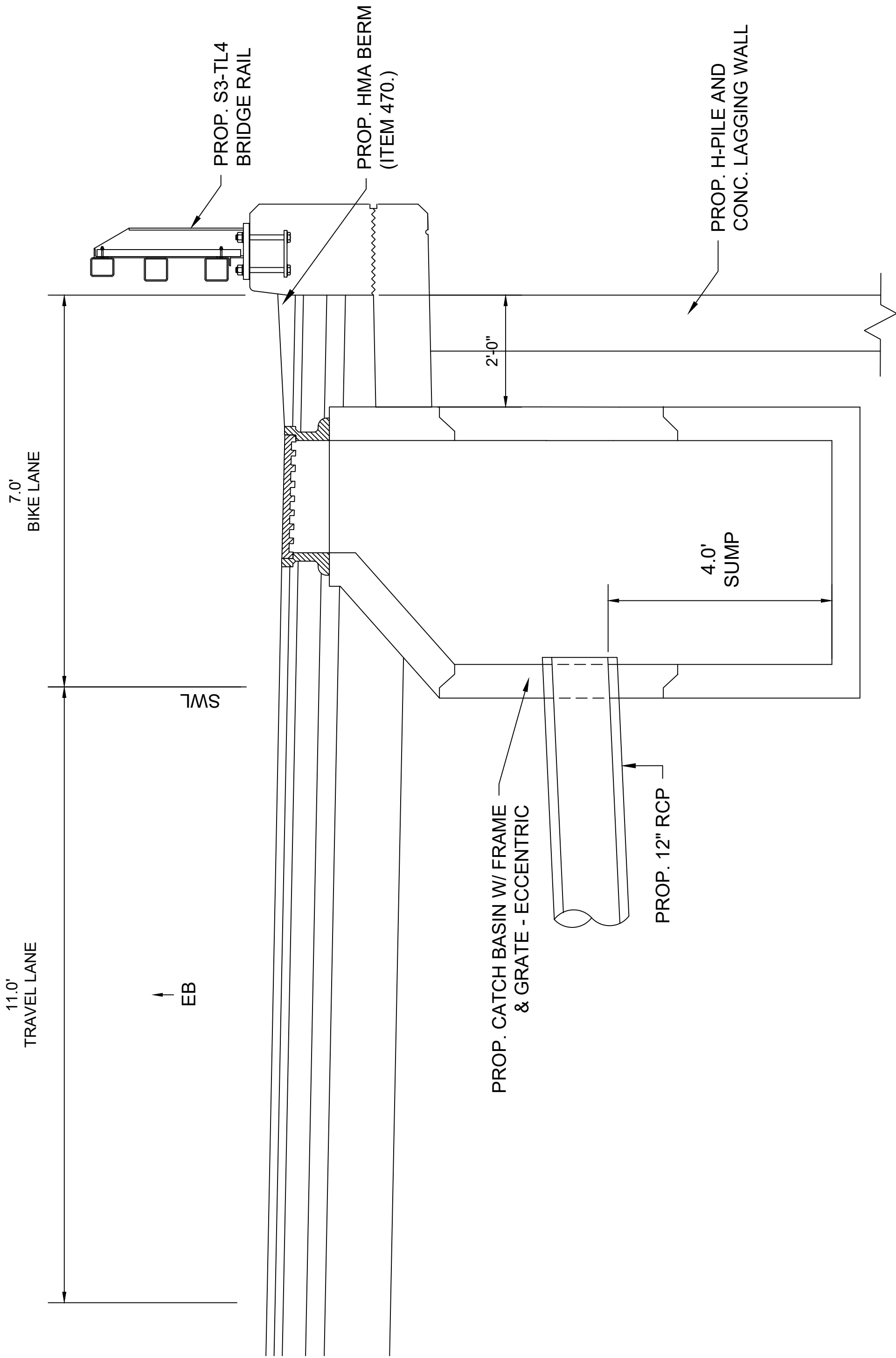
SECTION A-A

PLAN VIEW

STONE FOR PIPE ENDS SIZE TABLE				
	OUTFALL			
	L	W1	W2	
FES-301	4.00'	3.00'	5.67'	3
FES-302	4.00'	3.00'	5.67'	
FES-304	4.00'	3.00'	5.67'	
OUTLET	4.00'	3.00'	5.67'	3
STA. 106+92 RT	4.00'	3.00'	5.67'	
FES-306	6.00'	4.50'	8.50'	
FES-307	4.00'	3.00'	5.67'	3
FES-305	4.00'	3.00'	5.67'	
OUTLET	6.00'	4.50'	8.50'	
STA. 124+98 RT	6.00'	4.50'	8.50'	3
OUTLET	4.00'	3.00'	5.67'	
STA. 125+80 RT	4.00'	3.00'	5.67'	
OUTLET	8.00'	6.00'	11.33'	3
STA. 129+94 RT	8.00'	6.00'	11.33'	

STONE FOR PIPE ENDS

NOT TO SCALE



CATCH BASIN AT RETAINING WALL

N.T.S.