

December 30, 2022
REPLACEMENT OF BRIDGE NO. 68-002, 68-003 & 68-009
STATE PROJECT NO. 9068-0002, 9068-0003
& 9068-0009
TOWN OF KILLINGLY

ADDENDUM NO. 4

BID DOCUMENTS

REVISED SECTION I – INFORMATION FOR BIDDERS

The following bullet 4 under Section I – Information for Bidders supersedes the original language in the Contract:

4. PAYMENT TO THE CONTRACTOR:

The Municipality may make whatever investigations it deems necessary to determine the ability of the bidder to perform the work, and the bidder shall furnish to the Municipality all information and data for this purpose as the Municipality may request. The Bidder must be pre-qualified by the Connecticut Department of Transportation (ConnDOT) or be pre-qualified with the State of Connecticut Department of Administrative Services (DAS). Contractors shall submit the ConnDOT “Contractor’s Prequalification Statement/Application (CON-16)” for Group No. 8A Box Culverts. The Municipality reserves the right to reject any bid if the evidence submitted by, or investigation of, the bidder fails to satisfy the Municipality that the bidder is properly qualified to carry out the obligations of the contract and to complete the work contemplated therein. Conditional bids will not be accepted.

REQUEST FOR INFORMATION

The following are in response to the requests for information received:

1. The bid form appears to indicate this is a lump sum base price proposal, but the contract specifications indicate payment by unit measurement. Which is correct?

The project will be bid by the item and unit price for each bridge. See the revised bid documents, posted to the Town of Killingly website on December 12, 2022.

2. What amount of the budget should be carried for the Supplemental Streambed Channel Material designated in the specification to be paid on a cost-plus basis?

No budget needs to be carried for the Supplemental Streambed Channel Material. This item will be tracked as cost-plus if it is required during construction.

3. Can you confirm the utility relocation designated as “by others” will not be paid by the general contractor?

Confirmed. This cost will not be paid by the general contractor.

4. Are any police details required for traffic control operations, and if so, will the cost be paid by the town or the general contractor?

It is anticipated that the road will be closed during construction. If police are required, the cost will be paid for by the town.

5. Can unit pricing vary for the same work items on different bridges, or does unit pricing need to be consistent for the same work items on all bridges? For example, “Structure Excavation Earth” is an item on each of the three bridges and is paid by the cubic yard. Does the unit price bid per cubic yard need to be the same for each of the three bridges, or could the bidder, for example, bid \$10, \$20, and \$30 depending on the bridge?

No, the unit prices should not vary from bridge to bridge. For easy bookkeeping, unit prices for the same item should be consistent for all bridges.

6. Would a heat-applied, prefabricated membrane be acceptable in lieu of the cold spray-applied membrane system?

No. The DOT has adopted the cold spray method as the current.

7. The Metal Beam Rail R-B 350 (Type II) Section items are listed to be paid per “each”, but these are typically paid by linear foot. There is also Metal Beam Rail quantity at Site 2, but there is no pay item for it. Are these items to be bid as presented or is a unit revision to be made?

The Metal Beam Rail R-B 350 (Type II) Section is listed correctly as per “each”. Refer to CTDOT Standard Sheet HW-910_05. These sections are specifically designed for spanning over obstructions, such as a box culvert, up to 18’-9” wide and a single section is measured up to 125 LF. This is the case at both Site 1 and Site 3.

The Metal Beam Rail associated with Site 2 has been accounted for under items #0910173 – R-B 350 Bridge Attachment – Vertical Shaped Parapet & #0911924 – R-B End Anchorage Type II. Refer to CTDOT Standard Sheets HW-910_07 and HW-911_01 for details.

8. Item #0202454A – Special Test Pit – Water Main – may include temporary cofferdams, dewatering, and support of excavation however the plans do not provide any detail on the location or depth of this water main, which precludes accurate pricing. Please provide enough detail to price this lump sum item or consider changing to an allowance.

Please refer to “NTC – Coordination with utility companies and relocation of existing utilities”. All available information has been provided in the plans and in the bid documents. The contractor is responsible for verifying the water main’s location, depth and if it impedes with the bridge replacement operation. The contractor shall coordinate with CT Water accordingly.

9. Item #1507000A – Protection and Support of Existing Utilities consist of protecting and providing temporary support or relocating existing utilities located within and around the work zone. The plans only show overhead utilities, which are being relocated by others. What specific costs should be included in this item? If the exact scope is unknown, please consider changing the item to an allowance.

Please refer to the item’s special provision and “NTC – Coordination with utility companies and relocation of existing utilities.” The item consists of protecting any existing utilities around the work zone. The relocation of existing overhead utilities shall be performed by the corresponding utility company. The contractor shall coordinate with the utility company accordingly.

10. To what extent has the Town coordinated with the utility companies?

Please refer to the attached utility coordination report of meeting.

11. Who is responsible for paying the utility companies for utility relocations?

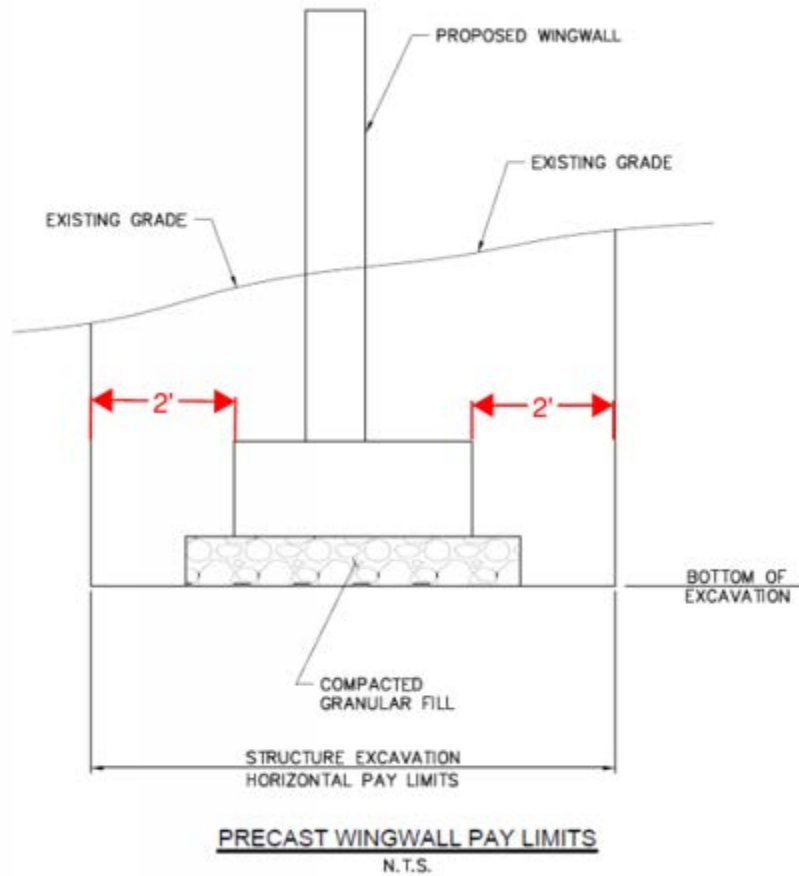
Utility companies shall cover 100% of the costs.

12. Please provide an approximate duration for each overhead utility relocation and confirm that any delays by the utility company will not result in any penalties to the general contractor.

Please refer to “NTC – Coordination with utility companies and relocation of existing utilities”. The contractor shall schedule the operations in such a manner as to minimize interferences with utility relocation/protection activities. A time extension change order will be granted if it is determined the utility company is responsible for the delay.

13. What are the dimensions of the horizontal pay limits of structural excavation for the wingwalls? They are not shown on detail sheet MDS-3.

The structure excavation pay limits for the wingwalls are set by a 2' horizontal offset from each face of the wingwall footing. See detail attached.



14. Will supplemental material used to backfill the removed CMP culverts at Site 3 be paid under contract unit items?

The cut and fill should be balanced from the excavation of the proposed culverts. If additional material are required, subbase item can be used.