



**INDUSTRIAL DRIVE ATHLETIC FIELDS AND
DAWSON RECREATION IMPROVEMENTS
HOLDEN, MA**

ADDENDUM NO. 4

to

CONSTRUCTION DOCUMENTS

March 8, 2024

Notice to Bidders

The attention of all bidders submitting proposals for “Industrial Drive Athletic Fields and Dawson Recreation Improvements” is called to the following Addenda to the specifications and plans. The items set forth herein, whether of omission, addition or substitution are to be included in, and form part of the specifications and plans of the above-named project for bids to be received as advertised.

**PLEASE BE SURE TO ACKNOWLEDGE RECEIPT
OF THIS ADDENDUM ON THE BID FORM**

The following clarifications, modifications, deletions, and additions are hereby incorporated into and become part of the Contract Documents. Contractors shall acknowledge receipt of this addendum with their bid submission.

GENERAL CLARIFICATIONS

1. For clarification A REVISED specification 00 41 13 – FORM OF GENERAL BID is attached. Revisions include the following,
 - a. Contractor to fully complete the project within **540** Consecutive Calendar days of the start date fixed in the “Notice to Proceed”.
 - b. Allowance section
 - c. Unit Price Schedule

WRITTEN CHANGES AND/OR CLARIFICATIONS TO SPECIFICATIONS

1. Specification Section 00 41 13 – FORM OF GENERAL BID

ADD: Specification Section 00 41 13 – FORM OF GENERAL BID

2. Specification Section 11 68 13.16 – FITNESS EQUIPMENT

ADD: Specification Section 11 68 13.16 – FITNESS EQUIPMENT, per attachment

3. Specification Section 32 17 23 – SIGNAGE

DELETE: 2.04 MONUMENT SIGN

1. The contractor shall furnish and install a Monument Sign as shown in the Construction Documents. The Monument Sign shall:

1. The sign shall conform to the Town of Holden public building sign aesthetics.
2. The sign shall be an elevated, timber posted sign with a painted wooden display panel. Graphics shall be vinyl applied graphics.
3. Shop drawings for each sign shall be produced for review, comment, and approval prior to final manufacturing.

ADD: 2.04 ENTRY SIGN

A. The contractor shall furnish and install the entry sign as shown in the Construction Documents. The sign shall be a custom design manufactured by Intelligent Signage, Inc, <https://www.intelligentsignage.net/contact.html>, or an approved equal.

B. The entry sign shall be:

1. 2” thick HDU sign foam, 15lb cnc routed and mounted on an internal 1” x 2” welded aluminum frame with 2”w x 30” x ¼” aluminum mounting plates.
 - a. A multi-level routed town seal and text shall be included.
2. Two (2) 6” x 6” x 7’ granite posts
3. All finish/exposed frame and hardware shall be painted black.
4. Final colors and town seal shall be submitted by owner’s representative.

4. Specification Section 32 33 00 – SITE FURNISHINGS AND ACCESSORIES, 2.03:

ADD: 8. Contractor shall supply at total of twelve (12) trash Receptacles.

5. Specification Section 32 34 14 – PREFABRICATED STEEL BOARDWALK, 2.03, E, g,

DELETE: i. Plastic Decking - high-density polyethylene (HDPE) continuous construction plastic. Size either 2" x 6" or 5/4" x 6" HDPE from 100% recycled plastic.

ADD: i. Wood Decking - Southern Yellow Pine, 2" x 6", #1 grade lumber, Micronized Copper Azole (MCA) treated for ground contact.

WRITTEN CHANGES AND/OR CLARIFICATIONS TO DRAWINGS

1. **DELETE:** Sheet UT500 – DRAINAGE & UTILITIES PLAN INDUSTRIAL DRIVE

ADD: Sheet UT500 – DRAINAGE & UTILITIES PLAN INDUSTRIAL DRIVE, per attachment.

2. **DELETE:** Sheet UT 501 – DRAINAGE & UTILITIES PLAN DAWSON RECREATION

ADD: Sheet UT 501 – DRAINAGE & UTILITIES PLAN DAWSON RECREATION, per attachment.

3. **DELETE:** Sheet UT702 – DRAINAGE & UTILITIES DETAILS

ADD: Sheet UT702 – DRAINAGE & UTILITIES DETAILS, per attachment

QUESTIONS AND CLARIFICATIONS

Question 1: *It appears there's two different segmental wall types (detail 1 & 6/L703) but only one is specified, Ledgestone by Redi-Rock.*

Response: For Clarification, Detail 1/L703 - SEGMENTAL BLOCK RETAINING WALL WITH FENCE POST and Detail 6/L703- SEGMENTAL BLOCK WALL illustrate the specific construction and implementation scenarios. The segmental block walls specifically, are one in the same as it relates to specified wall materials and or manufacturer that are to be provide.

Question 2: *Provide detail for CIP concrete headwalls at boardwalk.*

Response: Refer SKL-02, per attachment

Question 3: *What Alternate should the electrical scope/site lighting associated with the Dawson Improvements be included in? It crosses several of the alternate boundaries.*

Response: For Clarification, Alternate #1 shall include all electrical materials, labor, tools, equipment, and appurtenances necessary to furnish and completely install one (1) blue safety light, one (1) communication handhole, one (1) power

handhole, and associated conduit as indicated on the electrical plans and in the specifications.

Alternate #4 shall include all electrical materials, labor, tools, equipment, and appurtenances necessary to furnish and completely install a total of four (4) roadway lights (shown as PL1 on sheet E003), four (4) lighting handholes, and associated conduit as indicated on the electrical plans and in the specifications.

Alternate #5 shall include all electrical materials, labor, tools, equipment, and appurtenances necessary to furnish and completely install seven (7) pedestrian lights, seven (7) lighting handholes, and associated conduit as indicated on the electrical plans and in the specifications.

Question 4: *L306 calls out a double gate but graphically shows a single gate. The detail on L704 also shows a single gate. Should this be a single or double gate? If it is to be a double what size?*

Response: For Clarification, the gate located at the playground shall be a single gate per Detail 2/L704 -ORNAMENTAL PICKET FENCE.

Question 5: *L301 calls out a hydrant at the corner of the concrete pad by the support building but UT500 doesn't show any connection to it and there's no detail.*

Response: Contractor shall refer to Sheet UT500 -DRAINAGE & UTILITIES PLAN INDUSTRIAL DRIVE and Sheet UT702 – DRAINAGE & UTILITIES DETAILS, per attachment

Question 6: *Section 32 33 00 calls for a drinking fountain, however, none are shown on any plans.*

Response: For Clarification, the Contractor may DELETE any reference a drinking fountain. The drinking fountain was a wall mounted drinking fountain at the building and the building no longer included in the project.

Question 7: *Provide specs for bleachers shown on plans.*

Response: Contractor shall refer to Addendum #3, dated March 1, 2024, for bleacher specification accordingly.

Question 8: *What are the limits of the impermeable barrier at the Baseball field(5/L705)? Limits are shown on UT500 but not UT501.*

Response: For Clarification, refer to Sheet UT501 – DRAINAGE & UTILITIES PLAN DAWSON RECREATION, per attachment.

Question 9: *Where is detail 4/L704 used? Where is there a surface mounted guardrail/fence post? What should the width of this curb be? One dimension shows 6" the other shows 12".*

Response: For Clarification, all chain link fence posts footings shall follow Detail 1/L704 – BLACK VYNAL CHAIN LINK FENCE. Footing shall be 3’-6” from finished grade and below mow curb and or pavement where indicated on the plans accordingly. Delete all references to surface mounted fence and guardrail posts at a mow curb in Detail 4/L704 – CONCRETE MOW CURB AT FENCE. All mow curbs shall be 12” width per detail 4/L704.

Question 10: *Is the monument/entry sign (5/L707) just a plain bulletin board or a panel with graphics as indicated in the specs?*

Response: For clarification, the entry sign shall be per attached cutsheet example from the Public Works Facility project.

Question 11: *Would straw wattles be acceptable at the perimeter of disturbance instead of straw bales? Is silt fence required with it as shown on the details and mentioned in the OCC? The legend just says straw wattles so it’s not clear what’s required where.*

Response: For Clarification, straw wattles will not be acceptable at the perimeter of disturbance per the Order of Conditions. Straw bales with silt fence shall be placed at all perimeters of the disturbed area. Straw wattles may be used within the interior of the site only to mitigate erosion throughout construction duration.

Question 12: *Is the “Proposed Basin” closest to Industrial Dr on UT500 an “Infiltration Basin” per 5/UT701?*

Response: For Clarification, the basin closest to industrial drive is not designed as an infiltration basin.

Question 13: *Are details 2 & 6 on UT701 required on this project? If so, where?*

Response: Detail 2/UT701 – FOREBAY CHECK DAM and Detail 6/UT701-LEVEL SPREADER DETAIL no longer required for this project and are to be deleted.

Question 14: *Please confirm detail 4 on UT701 is the detail for the Overflow Weir callouts on UT500 & UT501.*

Response: For Confirmation, Detail 4/UT701 – EMERGENCY SPILLWAY FOR INFILTRATION BASIN is for the overflow weir callouts on UT500 – DRAINAGE & UTILITIES PLAN INDUSTRIAL DRIVE and UT501 – DRAINAGE & UTILITIES PLAN DAWSON RECREATION accordingly.

Question 15: *Spec 32 31 00 calls for 2” 6ga core fabric while detail 1/L704 calls for 1 ¾” 6ga core fabric. Which one should it be?*

Response: Refer to Addendum No. 3, Question No. 9 response, dated March 1, 2024.

Question 16: *Spec 32 31 00 calls for 9ga wire ties while detail 1/L704 calls for vinyl clad multi-lock bands. Which one should it be?*

Response: **Refer to Addendum No. 3, Question No. 9 response, dated March 1, 2024**

Question 17: *Are the collector pipes supposed to be solid as detailed on 2/L705 or perforated?*

Response: **For clarification, the collector pipes shall be solid as shown in Detail #2/L705 – COLLECTOR DRAIN AT SYNTHETIC TURF FIELD.**

Question 18: *Detail 2/L710 indicates that the pavilion structure is relocated. I assume this is a typo and the structure is to be furnished by the GC?*

Response: **For confirmation, the pavilion structure shall be furnished and completely installed by the General Contractor. Contractor shall disregard all references to relocation in Detail 2/L710 – PAVILION FOUNDATION.**

Question 19: *The answer to question #12 in Addendum #3, was to refer to question #7. Unfortunately, the answer to question #7, was not clear about the loads for the helical piles. I understand that the boardwalk is designed for pedestrians, and the boardwalk will be constructed from atop of the boardwalk, but I am still missing the information about what the loads per pile in kips or tons for the helical piles portion of the boardwalk. Is that something the structural engineer can assist with?*

Response: **Helical pile foundations shall be designed by a professional structural engineer in the Commonwealth of Massachusetts retaining by the specialty foundation contractor and load tests as specified. Pile design loads shall conform to a service level with axial +12 kips, -3 kips (uplift) and horizontal 5 kips any direction. Boardwalk shall have a live load of 90 PSF.**

Question 20: *We could not find any information on the equipment for the workout area shown on L301 in the specifications or in the plans. Please clarify what the equipment is, and if it is to be supplied by the contractor or if it is being supplied by the town and installed by the contractor.*

Response: **Contractor shall refer to Specification Section 11 68 13.16 – FITNESS EQUIPMENT, per attachment. For Clarification, the contractor shall furnish and completely install the fitness equipment under Add Alternate No. 6**

Question 21: *Please advise where the water fountain is to be located? Is a water meter going to be needed, as well as a backflow? If so, where are they to be housed?*

Response: **Refer to response to question #6 above.**

Question 22: *Now that the pre-engineered support building has been deleted, what is the plan for the 6” water line?*

Response: The water line shall be completely installed per the plans, details and specifications, and shall be capped 10' from the face of the future pre-engineered support building's location indicated on the plans.

Question 23: *Are the 2 benches shown outside of the pre-engineered support building part of ADD/ALT #7 that has been deleted, or are they staying as part of the BASE BID?*

Response: For Clarification, the 2 benches shown outside the pre-engineered support building shall be included as part of the base bid.

Question 24: *Please provide the fall height requirements for the PIP surfacing in the workout area in ADD/ALT #6, as well as the specifications for the workout equipment. The PIP installers require this to provide a quote. The information provided in detail 1/708 or in the specifications does not address this.*

Response: Contractor shall refer to Specification Section 11 68 13.16 – FITNESS EQUIPMENT, per attachment. Fall heights are to be provided by the equipment manufacturer. Per Detail 1/L708-POURED IN PLACE RUBBER SAFETY SURFACING, the depth of the PIP is to be per the ASTM requirements, 4" depth minimum.

Question 25: *Would it be possible for Weston and Sampson to overlay the extents of the different ADD/ALTS on planting plans L600-L603 so that it is clear what plant material is to be included in each ADD/ALT?*

Response: See attached SKL-03.

Question 26: *I am reaching out to see if Sofiline Solutions can be an approved equal for the poured-in-place rubber surfacing on this project.*

Response: All products furnished by the Contractor shall be reviewed during the submittal process and must meet the requirements set forth in the specifications.

Question 27: *What is the basis for the bid in regards to the stone walls detail 7/L703? The detail provided is not top scale so I do not know how to price. The specifications call for a design after bidding. How will that be handled if the new design differs from the details provided in the plans. This leaves the owner open to potentially large change orders.*

Response: Refer to Addendum No. 3, Question No. 6 response, dated March 1, 2024

Question 28: *What is the basis for the bid in regards to the Rip Rap slope detail 8/L703? The detail provided is not top scale so I do not know how to price. The specifications call for a design after bidding. How will that be handled if the new design differs from the details provided in the plans. This leaves the owner open to potentially large change orders.*

Response: Refer to Addendum No. 3, Question No. 6 response, dated March 1, 2024

Question 29: *How is the electrical broken out between alternates 4 & 5. This is not clear on the drawings.*

Response: Refer to response to question #3 above and SKE-01, per attached.

Question 30: *Can you provide a specification for the bleachers?*

Response: Refer to Addendum #3, dated March 1, 2023 for bleacher specification accordingly.

Question 31: *Can you provide a specification for the fitness equipment under alternate 6? Is this owner supplied?*

Response: Refer to response to question #21 above.

Question 32: *Will lighting product substitutions to the specified product be accepted that are value engineered for the project?*

Response: All products will be reviewed and approved as equal in compliance with the specifications set forth herein.

Question 33: *Will lighting product equals to the specified product be accepted for the project?*

Response: Refer to response to question #33 above.

Question 34: *Are the electrical items to be included in the base bid, or are the electrical items to be included in the alternate price within the alternate scope of work limits? The electrical drawings do not depict alternate areas of scope of work.*

Response: Refer to response to question #3 above and SKE-01, per attached.

Question 35: *What is required for pavement markings for the EV stalls, heights of lettering?*

Response: For bidding purposes, the Contractor shall provide one (1) total 8' width x 18' length painted striped access aisle within the EV stalls area. Sign and post shall be provided at each EV stall, set 1ft. behind the curb. Sign shall be 12"x 18" aluminum panel sign equal to ADA accessible parking signs. Final text for EV signs to be provided by owner during the submittal review. No pavement painted text is required.

Question 36: *Are the pavement markings to be paint or thermoplastic? There's reference to both in the spec.*

Response: For Clarification, the pavement markings shall be painted. DELETE all references to thermoplastic.

Question 37: *Is the workout equipment as part of Alt 6 being provided by the Owner? There isn't a spec. We would need that to determine an install price.*

Response: Refer to response to question #21 above

Question 38: *Are we allowed to go into the wetland/floodplain to clear and grub for the boardwalk? What should that area be restored with for planting/seeding?*

Response: No, there shall be only as required for construction purposes, hand trimming of vegetation only in the areas where boardwalk is proposed. No heavy equipment shall be allowed in the wetland area and boardwalk shall be built with top-down construction methods.

Question 39: *Sheet E001 states that the electrical contractor is responsible for the utility company back- charges (Note 7) and the cost of electricity for the temporary service (Note 11). Per Note 9 there is no existing work order for this project. Can an allowance be added for all bidders to carry these potential costs? Or, since it's a municipal project will the fees be waived?*

Response: The Town shall pay all charges associated with the new service. Holden Light and Power shall furnish transformer under separate contract.

Question 40: *What size is the water main we're tapping?*

Response: The existing water main within Industrial that is to be tapped 12".

Question 41: *What is the base course material for the stabilized stone dust?*

Response: The base course material for the stabilized stone dust (accessible trail surfacing) shall be Dense graded crushed stone.

Question 42: *Is the Entry Sign shown on the inset of L300 and detail 5/L707 the same at the "Monument Sign" noted in specification section 32 17 23-3 2.04A? Can you provide more detail so this can be priced accurately?*

Response: See clarification above and attached cutsheet example from the Public Works Facility project.

ATTACHMENTS:

Specification Section 00 41 13 – FORM OF GENERAL BID

Specification Section 11 68 13.16 – FITNESS EQUIPMENT

SKL02 – CIP BOARDWALK HEADWALL DETAIL

SKL-03 – PLANTING PLAN – DAWSON RECREATION ALTERNATE DELINEATION

SKE01 – ELECTRICAL SITE PLAN DAWSON RECREATION ALTERNATE DELINEATION

UT500 – DRAINAGE & UTILITIES PLAN – INDUSTRIAL DRIVE

UT501 – DRAINAGE & UTILITIES PLAN – DAWSON RECREATION
UT702 – DRAINAGE & UTILITIES DETAILS
Entry sign cutsheet from the Public Works Facility project.

END OF ADDENDUM NO. 4

SECTION 00 41 13
FORM OF GENERAL BID

Proposal of _____ (hereinafter called "Bidder")*

- a corporation, organized and existing under the laws of the State of _____
- a partnership
- a joint venture
- a limited liability company
- an individual doing business as _____

*Check corporation, partnership, joint venture, LLC or individual as applicable.

To the _____ (hereinafter called "Owner").

Everyone:

The undersigned Bidder, in compliance with your invitation for bids for construction of **Industrial Drive Athletic Fields and Dawson Recreation Area Improvements** having examined the plans and specifications with related documents and the site of the proposed work, and being familiar with all of the conditions surrounding the construction of the proposed project including the availability of materials and labor, hereby proposes to furnish all superintendence, labor, services, materials, equipment, plant, machinery, apparatus, appliances, tools, supplies, bailing, shoring, removal, and all other things necessary to construct the project in accordance with the contract documents, within the time set forth below, and at the prices stated below. These prices are to cover all expenses incurred in performing the work required under the contract documents, of which this bid is a part.

The Bidder hereby agrees that if selected as the Contractor it will commence work under this contract on or before a date to be fixed in the written "Notice to Proceed" given by the Owner to the Contractor and to fully complete the project within 540 Consecutive days of the start date fixed in the "Notice to Proceed". The Bidder further agrees to pay as liquidated damages the sum of \$ 500 for each consecutive calendar day thereafter during which the work has not been fully

completed, as provided in the "Liquidated Damages" provisions of Section 00 73 00, SUPPLEMENTARY CONDITIONS.

Bidder acknowledges receipt of the following addenda:

No. _____ Dated: _____

No. _____ Dated: _____

No. _____ Dated: _____

No. _____ Dated: _____

Item 1. BASE PROPOSAL: Bidder agrees to perform all of the work described in the specification and shown on the plans for the sum of: _____ Dollars and Cents (\$ _____)

Item 2. ADD ALTERNATE NO.1 – PLAYGROUND AT DAWSON RECREATION AREA: Bidder agrees to perform all of the work described in the specification and shown on the plans for the sum of: _____ Dollars and Cents (\$ _____)

Item 3. ADD ALTERNATE NO.2 – SYNTHETIC TURF BASEBALL FIELD AT DAWSON RECREATION AREA: Bidder agrees to perform all of the work described in the specification and shown on the plans for the sum of: _____ Dollars and Cents (\$ _____)

Item 4. ADD ALTERNATE NO.3 – BOARDWALK AND ASSOCIATED TRAILS AT DAWSON RECREATION AREA: Bidder agrees to perform all of the work described in the specification and shown on the plans for the sum of: _____ Dollars and Cents (\$ _____)

Item 5. ADD ALTERNATE NO.4 – ACCESS DRIVE AND HANDICAPPED PARKING SPACES AT DAWSON RECREATION AREA: Bidder agrees to perform all of the work described in the specification and shown on the plans for the sum of:

_____ Dollars and Cents (\$ _____)

Item 6. ADD ALTERNATE NO.5 – ACCESSIBLE PATH FROM PARKING LOT TO TENNIS COURTS AT DAWSON RECREATION AREA: Bidder agrees to perform all of the work described in the specification and shown on the plans for the sum of:

_____ Dollars and Cents (\$ _____)

Item 7. ADD ALTERNATE NO.6 – WORKOUT AREA AT INDUSTRIAL DRIVE: Bidder agrees to perform all of the work described in the specification and shown on the plans for the sum of:

_____ Dollars and Cents (\$ _____)

ALLOWANCE

Under the base bid, the Bidder shall include an allowance of **Thirty percent (30%)** of the total cubic yard volume of Stone Boulders (total quantity represented in item 1c of the Unit Pricing Schedule below) for all costs associated with onsite excavating, salvaging, relocating, placing of salvaged stone boulders associated with the Reinforced Soil Slope with Boulder Facing as indicated on the Contract Documents and meet Specification Section 32 32 53 – REINFORCED SOIL SLOPES, PART 2 – PRODUCTS, Item 2.06B.

Under the base bid, the Bidder shall include an allowance of **\$100,000** for ledge removal and disposal related costs.

UNIT PRICING SCHEDULE

Item No.	Description	Payment	Estimated Quantity	Unit Price	Total Amount (Words)	Total Amount (Numerals)
1.0 Reinforced Soil Slope with Boulder Facing						
1a	Dense Graded Crushed Stone	per Cubic Yard	3,906			\$
1b	¾" Crushed Drainage Stone	per Cubic Yard	2,122			\$
1c	Stone Boulders	per Cubic Yard	464			\$
1d	Geosynthetic Reinforcement	per Square Foot	43,350			\$
1e	4" Perforated Drain Pipe	per Linear Foot	180			\$
1f	Geotextile Fabric	Per Square Foot	13,500			
2.0 Reinforced Soil Slope with Riprap Facing						
2a	¾" Crushed Drainage Stone	per Cubic Yard	1,951			\$
2b	Placed Modified Rockfill	per Cubic Yard	612			\$
2c	Geosynthetic	per Square Foot	23,700			\$

	Reinforcement					
3.0	Ledge					
3a	Ledge removal and disposal	Per Ton	1			\$

(Amounts are to be shown in both words and figures. In case of discrepancy, the amount shown in words will govern.)

The BASE PROPOSAL and the above unit prices shall include all labor, materials, bailing, shoring, removal, overhead, profit, insurance, bond premiums, engineering costs, etc., to cover the finished work of the several kinds called for.

The Bidder understands that all bids for this project are subject to the applicable bidding laws of the Commonwealth of Massachusetts, including General Laws Chapter 30, Section 39M, as amended.

The contract will be awarded to the lowest responsible and eligible bidder.

Bidder understands that the Owner reserves the right to reject any or all bids and to waive any informalities in the bidding.

The Bidder agrees that this bid shall be good and may not be withdrawn for a period of 90 days, Saturdays, Sundays and legal holidays excluded, after the opening of bids.

Within 10 days of receipt of the written notice of acceptance of this bid, the Bidder will execute the formal agreement attached in Section 00 52 00 AGREEMENT and provide the requisite payment and performance bonds and certificates of insurance.

Bid security is attached in the sum of five percent (5%) of the total bid in accordance with the conditions of Section 00 21 13 INSTRUCTIONS TO BIDDERS. The bid security may become the property of the Owner in the event the contract and bond are not executed within the time set forth above.

The selected Contractor shall furnish a performance bond and a payment bond in an amount at least equal to one hundred percent (100%) of the contract prices in accordance with Section 00

61 13.13 PERFORMANCE BOND, Section 00 61 13.16 PAYMENT BOND, and as stipulated in Section 00 72 00, GENERAL CONDITIONS of these specifications.

The undersigned offers the following information as evidence of its qualifications to perform the work as bid upon according to all the requirements of the plans and specifications.

1. Have been in business under present name for _____ years.

2. The names and addresses of all persons interested in the bid (if made by a partnership or corporation) as Principals, are as follows:

(Attach supplementary list if necessary)

04/29/2022

3. The Bidder shall state below what work of a similar character to that included in the proposed contract it has done, and give references that will enable the Owner to judge its experience, skill and business standing (add supplementary page if necessary).

Completion Date	Project Name	Contract Amount	Design Engineer	Reference Name	Telephone No.
-----------------	--------------	-----------------	-----------------	----------------	---------------

a. _____

b. _____

c. _____

d. _____

e. _____

f. _____

00 41 13-5

Pursuant to M.G.L. CH. 62C, Sec 49A, the undersigned Bidder certifies under the penalties of perjury that it is in compliance with all laws of the Commonwealth relating to taxes, reporting of employees and contractors, and withholding and remitting child support.

The undersigned Bidder hereby certifies that (1) it is able to furnish labor that can work in harmony with all other elements of labor employed or to be employed in the work; (2) that all employees to be employed at the worksite will have successfully completed a course in construction safety and health approved by the United States Occupational Safety and Health Administration that is at least 10 hours in duration at the time the employee begins work and who shall furnish documentation of successful completion of said course with the first certified payroll report for each employee; and 3) that all employees to be employed in the work subject to this bid have successfully completed a course in construction safety and health approved by the United States Occupational Safety and Health Administration that is at least 10 hours in duration.

The undersigned certifies under penalties of perjury that this bid is in all respects bona fide, fair and made without collusion or fraud with any other person. As used in this paragraph the word "person" shall mean any natural person, joint venture, partnership, corporation or other business or legal entity which sells materials, equipment or supplies used in or for, or engages in the performance of, the same or similar construction, reconstruction, installation, demolition, maintenance or repair work or any part thereof.

The undersigned Bidder hereby certifies, under pains and penalties of perjury, that the foregoing bid is based upon the payment to laborers to be employed on the project of wages in an amount no less than the applicable prevailing wage rates established for the project by the Massachusetts Department of Labor and Workforce Development. The undersigned bidder agrees to indemnify the awarding authority for, from and against any loss, expense, damages, actions or claims, including any expense incurred in connection with any delay or stoppage of the project work arising out of or as a result of (1) the failure of the said bid to be based upon the payment of the said applicable prevailing wage rates or (2) the failure of the bidder, if selected as the Contractor, to pay laborers employed on the project the said applicable prevailing wage rates.

The undersigned further certifies under penalty of perjury that the said undersigned is not presently debarred from doing public construction work in the Commonwealth of Massachusetts under the provisions of Section Twenty-Nine F of Chapter Twenty-Nine, Section 25C (10) of

Chapter 152 (workers' compensation) or any other applicable debarment provisions of any other Chapter of the General Laws or any rule or regulations promulgated thereunder

Respectfully submitted:

Date _____

By _____
(Signature)

(Name - Typed or Printed)

(Title)

(SEAL - if bid is by a corporation)

(Business Name)

(Federal ID Number)

(Business Address)

(City and State)

(Telephone Number)

SECTION 11 68 13.16

FITNESS EQUIPMENT

PART 1 - GENERAL

1.01 SCOPE OF WORK

- A. Under the Base Bid, the Contractor is responsible for preparing all base materials, sub-grades all fitness areas as well as adjacent site features. The fitness equipment shall be as noted on the plans and herein or approved equal.

1.02 REFERENCE STANDARDS AND SPECIFICATIONS

- A. Fitness equipment design, layout, and installation shall comply with the following standards and guidelines as applicable.
 - 1. CPSC - Consumer Product Safety Commission Guidelines for Playground Safety, latest edition.
 - 2. ASTM - American Society for Testing and Materials, Designation: F 1487, Standard Consumer Safety Performance Specification for Playground Equipment for Public Use, latest edition.
 - 3. ANSI - American National Standards Institute.
 - 4. AASHTO - American Association of State Highway and Transportation Officials (tests of specifications).
 - 5. MAAB - Massachusetts Architectural Access Board
- B. Requirements not specifically set forth herein, but required by the agencies listed in above shall be understood to be a requirement of this contract since these standards of quality and safety are established as the industry standard(s). Any conflicts between the agency standards and the contract documents shall be brought to the attention of the Owner's Representative, and unless otherwise required in writing, the agency standards shall be the minimum requirement to be followed.

1.03 SHOP DRAWINGS

- A. Prior to ordering, furnishing and/or installing the fitness equipment as required by the Contract Documents, the following shall be submitted to the Project Representative for review and approval:
 - 1. Certified product data, shop and fabrication drawings showing all

important details of construction and dimensions showing the equipment, arrangement, footing spacing and lengths. Shop drawings shall stipulate and certify to compliance with all CPSC and ASTM standards and guidelines as applicable.

2. Descriptive literature and technical specifications for all fitness equipment installations.
 3. Warranty certificates for all applicable play equipment features, components, hardware, finishes and other applicable items.
 4. In the event that it is impossible to conform to certain details of this specification due to differing manufacturing techniques or conventions, submit complete summary of all non-compliant components or elements.
- B. The Contractor shall submit complete manufacturer's shop drawings. No material may be ordered prior to receiving written approval from the Owner's Representative.

1.04 SAMPLES

- A. Submit the following samples in accordance with the provisions of the GENERAL CONDITIONS.
1. Submit samples and descriptive literature of all items specified in this Section, including treatments, finishes, colors, and test information.

1.05 QUALIFICATIONS

- A. Installer shall have a minimum of five (5) years experience with a minimum of fifteen (15) playground installations. References will be required.

PART 2 - MATERIALS

2.01 FITNESS EQUIPMENT

- A. Fitness Equipment shall be manufactured by Playworld Systems, Inc., 1000 Buffalo Road, Lewisburg, PA 17837, 570-522-9800, www.playworldsystems.com, or approved equal. Fitness equipment shall be as follows:

	QTY.	Model #	Description
Fitness Equip.	1	ZZXX0090	Station 2: Pulling, Back, Angle Bar, & Hurdle Exercises
	1	ZZXX0091	Station 3: Squat, Dip, Push-Up, & Balance Exercises
	1	ZZXX0092	Station 4: Power & Agility Step Exercises
Sign	1	ZZXX0117S	Double Sided Welcome Sign, In-Ground Mounted

2.02 RESILIENT SAFETY SURFACE

- A. The resilient safety surface shall meet the requirements as specified in Section 32 18 16 of the Specifications.

2.03 CAST IN PLACE CONCRETE

- A. Concrete for the footings will be cast in place cement concrete as specified in Section 03 30 00 of the Specifications. Top of concrete footings shall be twelve (12) inches minimum below finished grade.

2.04 MAINTENANCE KIT

- A. The Contractor shall provide the Town with a maintenance kit that is to include twenty (20) replacement hardware covers / caps for each structure, any special tools required for replacement of parts, one (1) gallon of graffiti removal / cleaning solutions as recommended by the manufacturer, one (1) gallon of touch-up paint for each color of painted metal, a manual that includes all installation and maintenance instruction provided by the manufacturer.

PART 3 – EXECUTION

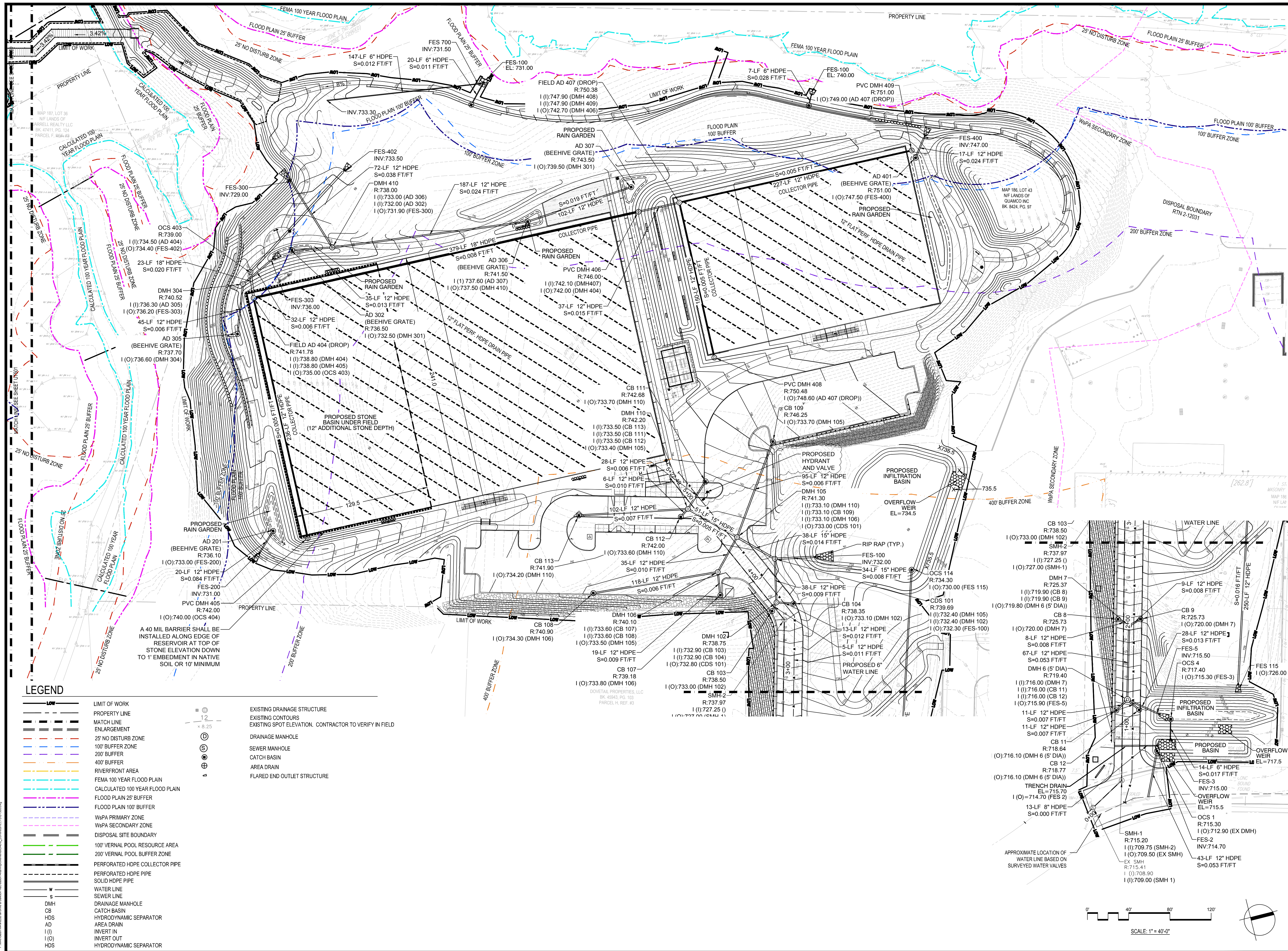
- 3.01 The Contractor shall assemble the specified equipment under the supervision of an approved Supervisor per the manufacturer's instructions, the contract drawings and these Specifications.
- 3.02 The Contractor shall locate the structures to the lines and grades specified in the drawings in these Specifications and per the specifications of the manufacturer of the equipment. Adjust all equipment to suit site gradients; no sloping platforms, tracks, or members intended to be horizontal shall be accepted.
- 3.03 The excavation for the footings shall be done as specified in Section 31 50 00 SUPPORT OF EXCAVATION of these Specifications and according to the Contract Drawing details.
- 3.04 The equipment shall be located and brought to the heights as shown in the drawings and as recommended by the manufacturer with vertical and horizontal members set plumb and then braced to be held in place.
- 3.05 The concrete shall be poured around the supporting pieces of the equipment to the grades detailed. The concrete shall be poured and cured per Section 03 30 00 of these Specifications. Slope tops of footings to drain; set bottom of vertical members into gravel base to ensure drainage; do not encase bottom in concrete.
- 3.06 After the specified cure period of the concrete has passed the bracing may be removed.

- 3.07 The fills and surfaces shall then be placed and brought to the grades shown in the Contract Drawings and in accordance with Section 31 00 00 EARTHWORK of these Specifications.

PART 4 - GUARANTEE AND ACCEPTANCE/LIABILITY

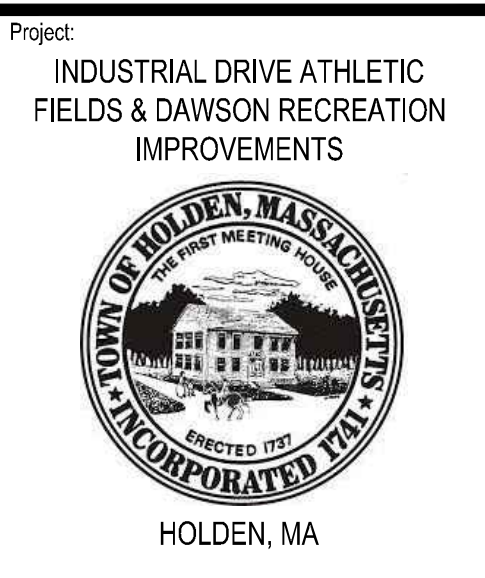
- 4.01 All operating parts and structural elements of the play equipment and safety surface shall be guaranteed against failure or defect during normal use and operation for the entire warranty period as established by the manufacturer.
- 4.02 Any defective elements shall be replaced in part or whole by the Contractor at no cost to the Owner.
- 4.03 The Contractor and the manufacturer shall hold the Owner and Owner's Representative harmless from any and all damages or liability resulting from negligent acts and omissions on the part of the Contractor or manufacturer, or resulting from defective parts, or improperly assembled equipment. Contractor shall provide secure storage for all equipment on job site.
- 4.04 The Contractor is responsible for securing a Certified Playground Safety Inspector to ensure ASTM and SPSC compliance. A certificate of compliance will be issued to the Owner prior to final inspection.

- END OF SECTION 11 68 13.16 –
FITNESS EQUIPMENT



LEGEND

- LIMIT OF WORK**
- PROPERTY LINE**
- MATCH LINE ENLARGEMENT**
- 25' NO DISTURB ZONE**
- 100' BUFFER ZONE**
- 200' BUFFER**
- 400' BUFFER**
- RIVERFRONT AREA**
- FEMA 100 YEAR FLOOD PLAIN**
- CALCULATED 100 YEAR FLOOD PLAIN**
- FLOOD PLAIN 25' BUFFER**
- FLOOD PLAIN 100' BUFFER**
- WSPA PRIMARY ZONE**
- WSPA SECONDARY ZONE**
- DISPOSAL SITE BOUNDARY**
- 100' VERNAL POOL RESOURCE AREA**
- 200' VERNAL POOL BUFFER ZONE**
- PERFORATED HDPE COLLECTOR PIPE**
- PERFORATED HDPE PIPE**
- SOLID HDPE PIPE**
- WATER LINE**
- SEWER LINE**
- DMH DRAINAGE MANHOLE**
- CB CATCH BASIN**
- HDS HYDRODYNAMIC SEPARATOR**
- AD AREA DRAIN**
- I(I) INVERT IN**
- I(O) INVERT OUT**
- HDS HYDRODYNAMIC SEPARATOR**



Weston & Sampson
Weston & Sampson Engineers, Inc.
85 Devonshire Street, 3rd Floor
Boston, MA 02109
978.532.1900 800.SAMPSON
www.westonandsampson.com

Revisions:

No.	Date	Description

COA:

No.	Date	Description

Seal:

Issued For:

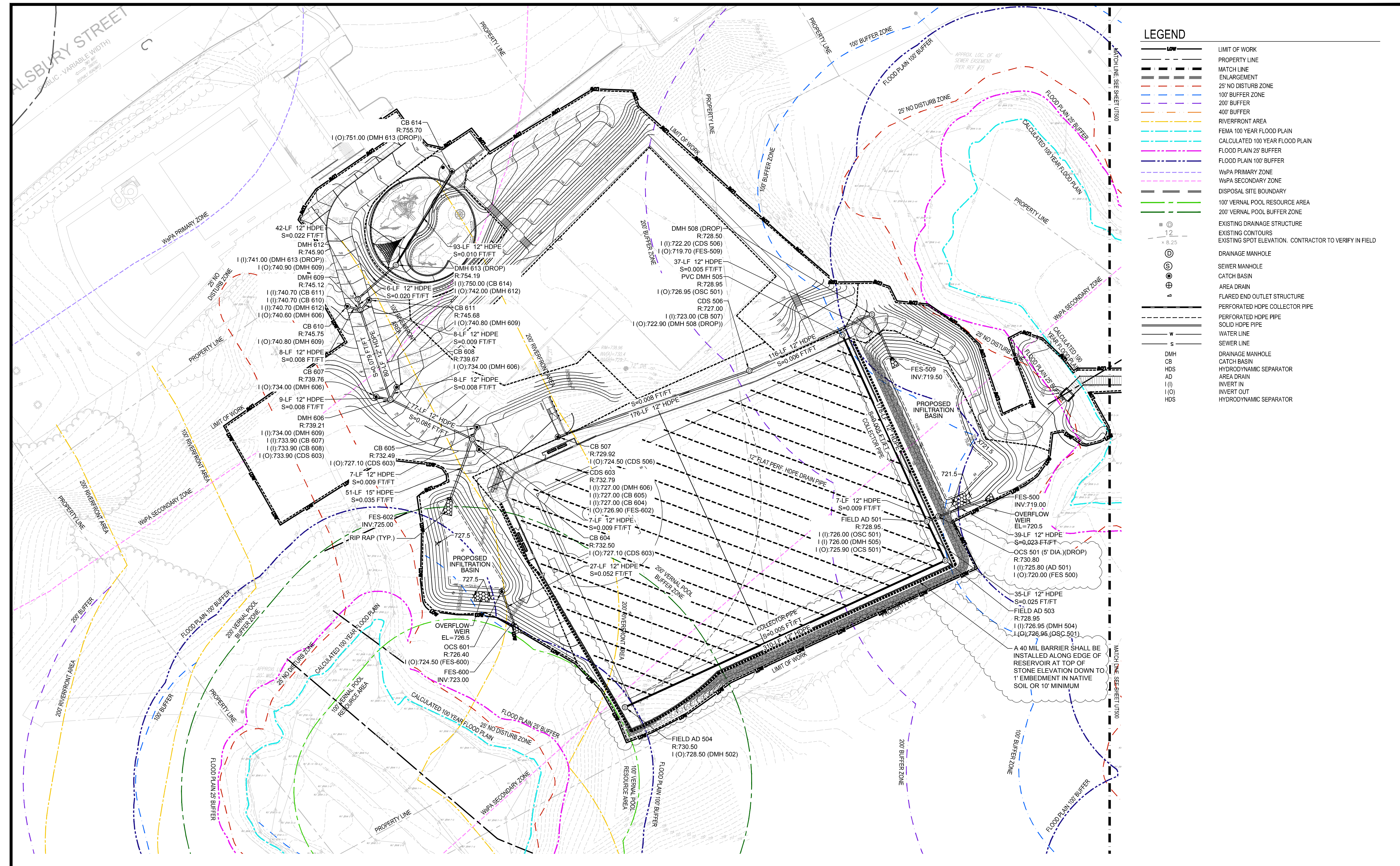
CONSTRUCTION DOCUMENTS

Scale:

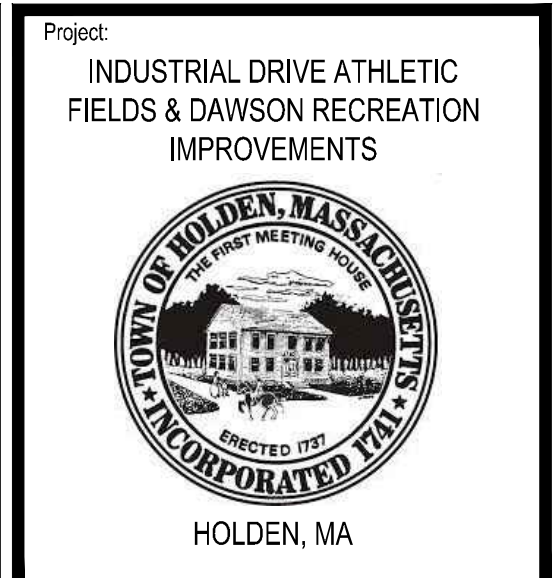
Date: 02/14/2024
Drawn By: AG, KH
Reviewed By: JM
Approved By: BK
W&S Project No.: ENG22 - 0852
W&S File No.:

**DRAINAGE & UTILITIES PLAN
INDUSTRIAL DRIVE**

Sheet Number: **UT500**



- ### LEGEND
- LIMIT OF WORK
 - PROPERTY LINE
 - MATCH LINE
 - ENLARGEMENT
 - 25' NO DISTURB ZONE
 - 100' BUFFER ZONE
 - 200' BUFFER
 - 400' BUFFER
 - RIVERFRONT AREA
 - FEMA 100 YEAR FLOOD PLAIN
 - CALCULATED 100 YEAR FLOOD PLAIN
 - FLOOD PLAIN 25' BUFFER
 - FLOOD PLAIN 100' BUFFER
 - WSPA PRIMARY ZONE
 - WSPA SECONDARY ZONE
 - DISPOSAL SITE BOUNDARY
 - 100' VERNAL POOL RESOURCE AREA
 - 200' VERNAL POOL BUFFER ZONE
 - EXISTING DRAINAGE STRUCTURE
 - EXISTING CONTOURS
 - EXISTING SPOT ELEVATION. CONTRACTOR TO VERIFY IN FIELD
 - DRAINAGE MANHOLE
 - SEWER MANHOLE
 - CATCH BASIN
 - AREA DRAIN
 - FLARED END OUTLET STRUCTURE
 - PERFORATED HDPE COLLECTOR PIPE
 - PERFORATED HDPE PIPE
 - SOLID HDPE PIPE
 - WATER LINE
 - SEWER LINE
 - DRAINAGE MANHOLE
 - CATCH BASIN
 - HYDRODYNAMIC SEPARATOR
 - AREA DRAIN
 - INVERT IN
 - INVERT OUT
 - HYDRODYNAMIC SEPARATOR



Weston & Sampson
 Weston & Sampson Engineers, Inc.
 85 Devonshire Street, 3rd Floor
 Boston, MA 02109
 978.532.1900 800.SAMPSON
 www.westonandsampson.com

Consultants:

No.	Date	Description

COA:

Seal:

Revisions:

No.	Date	Description

Issued For:
CONSTRUCTION DOCUMENTS

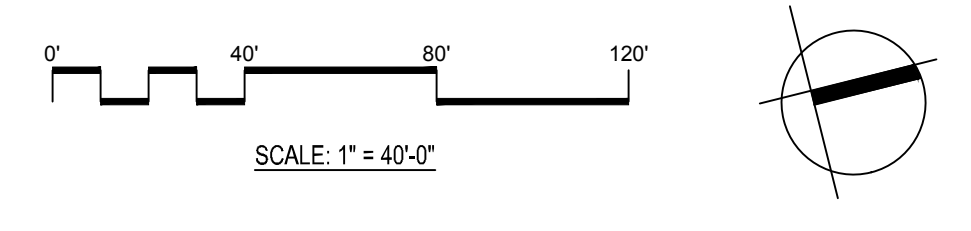
Scale:

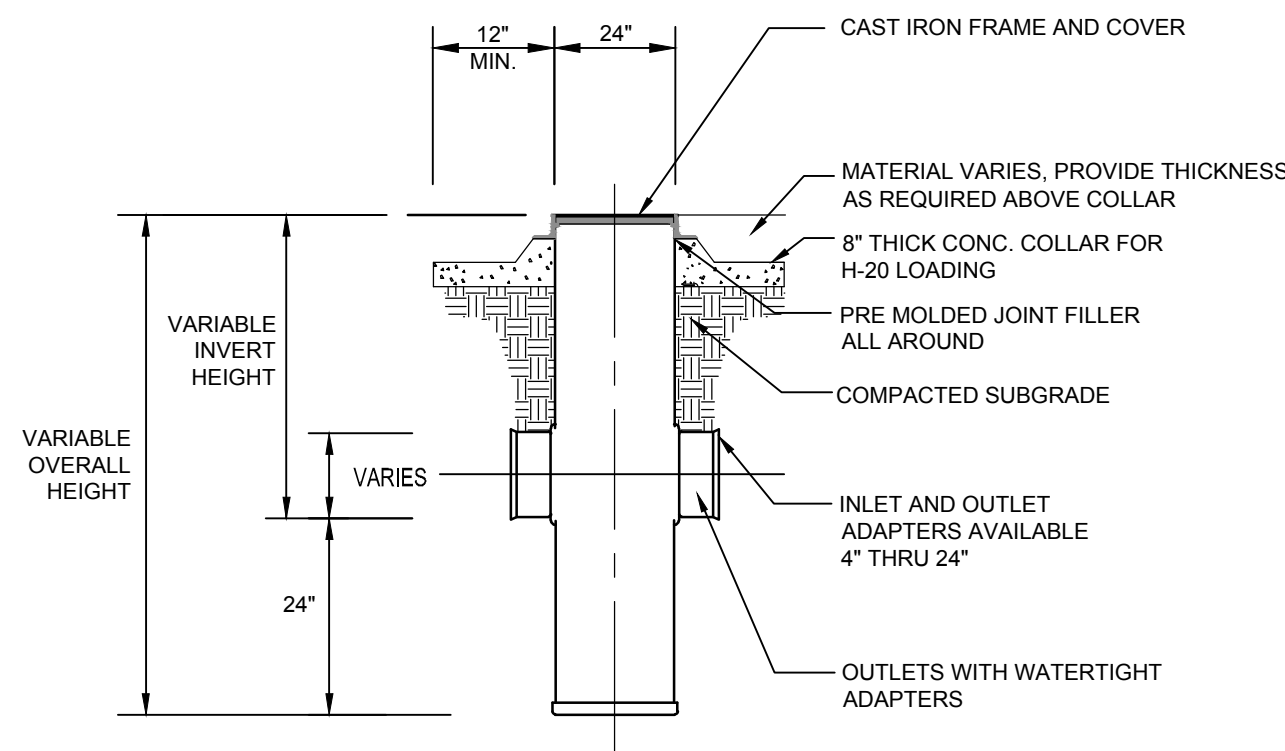
Date: 02/14/2024
 Drawn By: AG, KH
 Reviewed By: JM
 Approved By: BK

W&S Project No.: ENG22 - 0852
 W&S File No.:

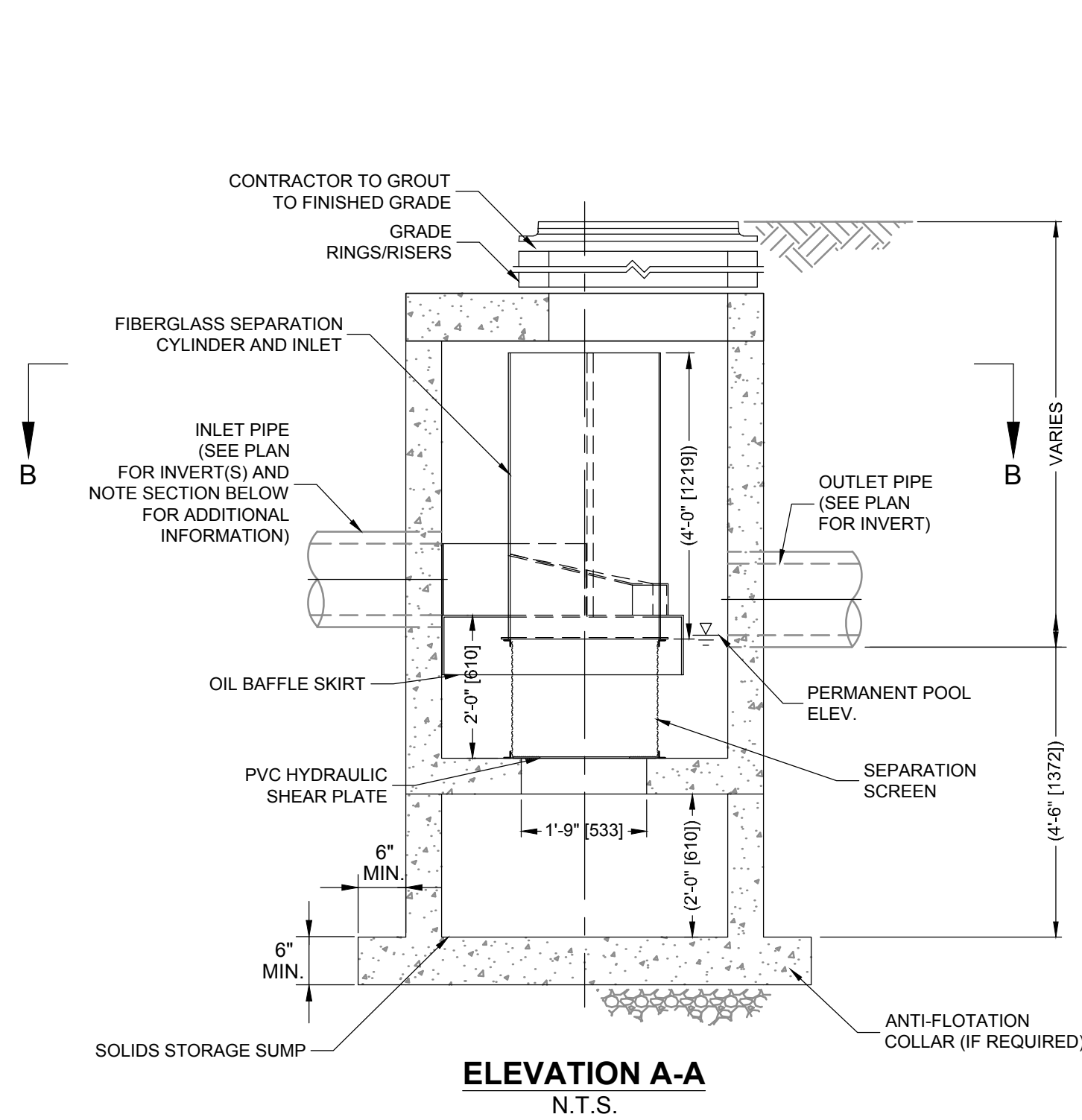
Drawing Title:
**DRAINAGE & UTILITIES PLAN
 DAWSON RECREATION**

Sheet Number:
UT501

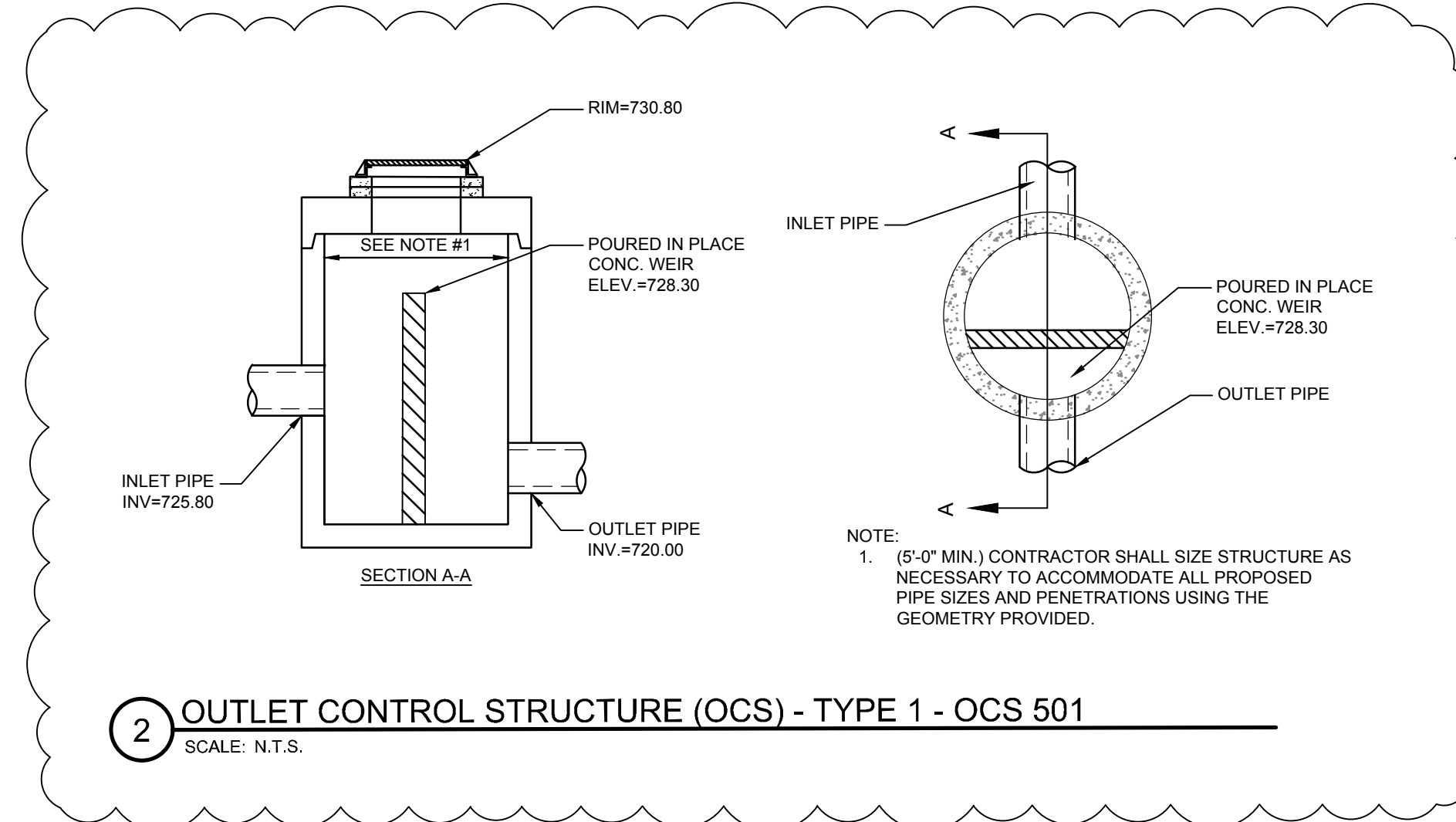
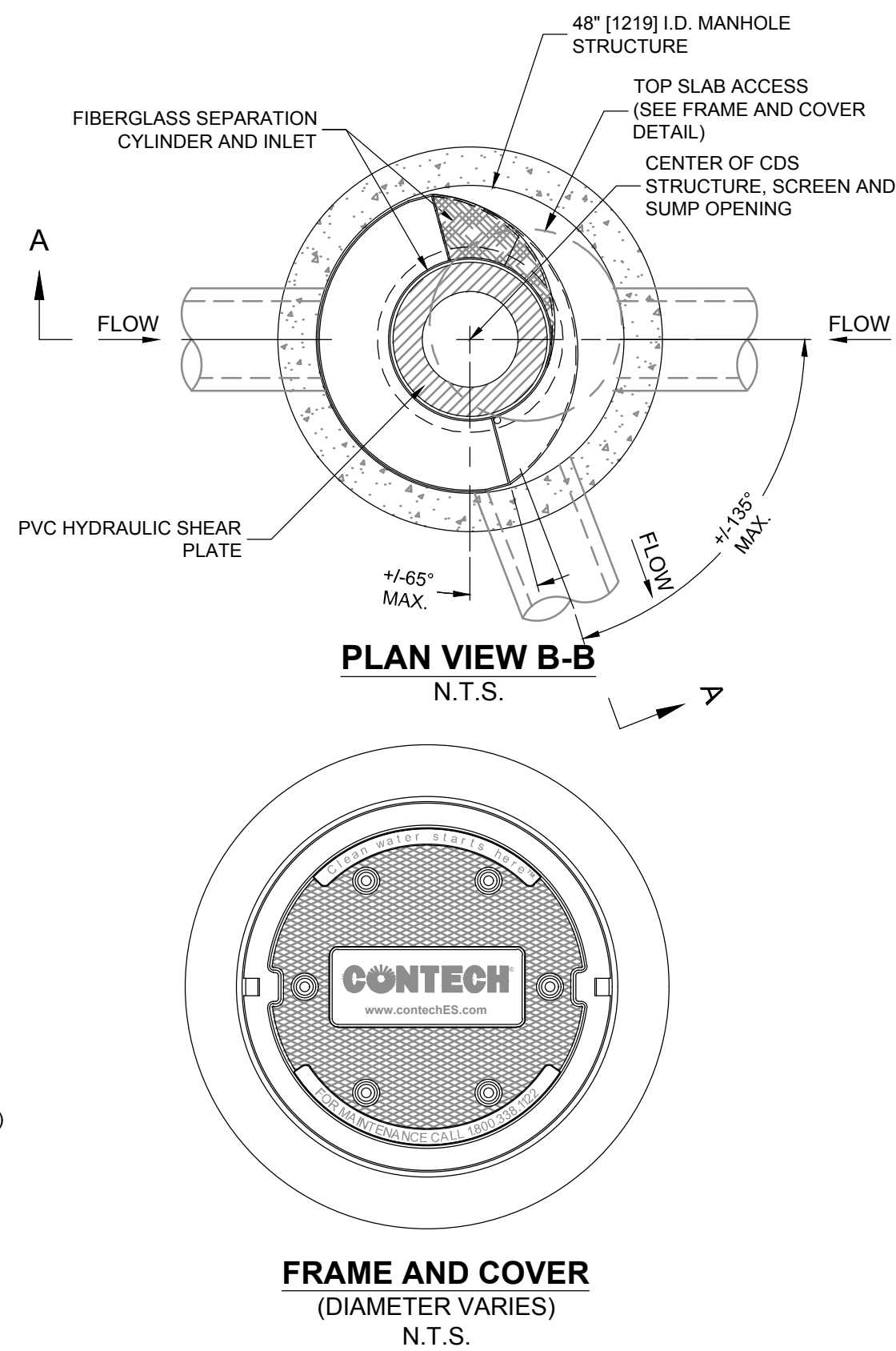




1 PVC DRAIN MANHOLE
SCALE: N.T.S.



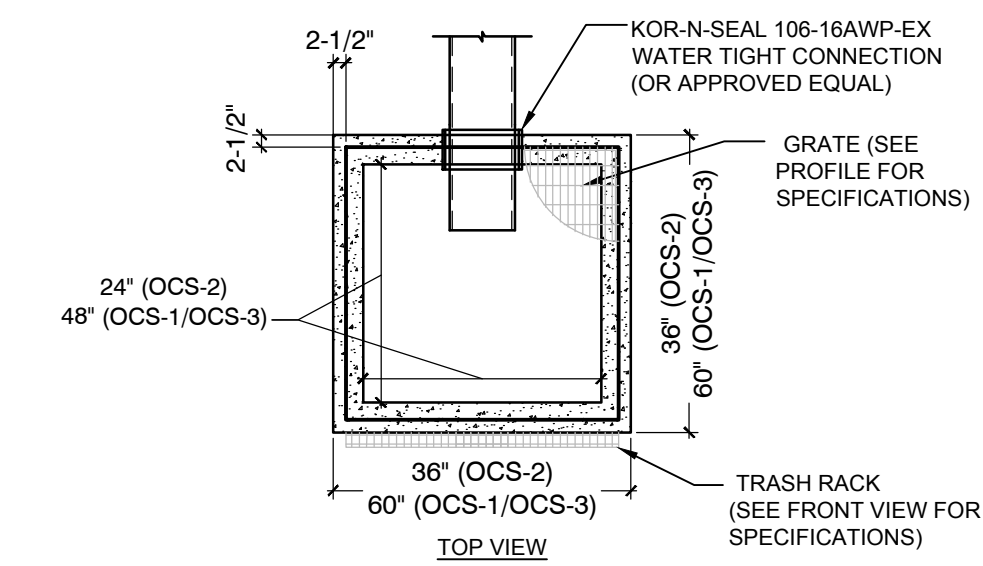
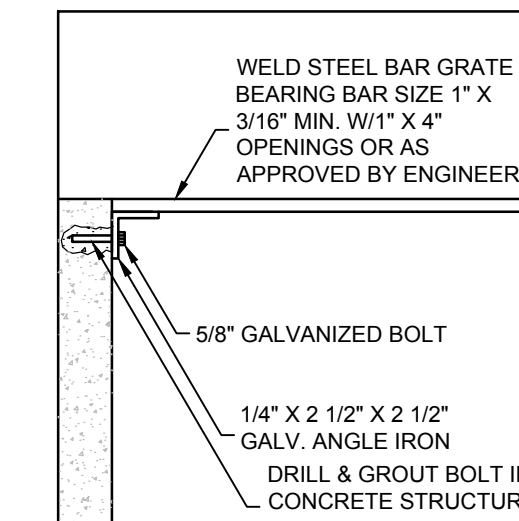
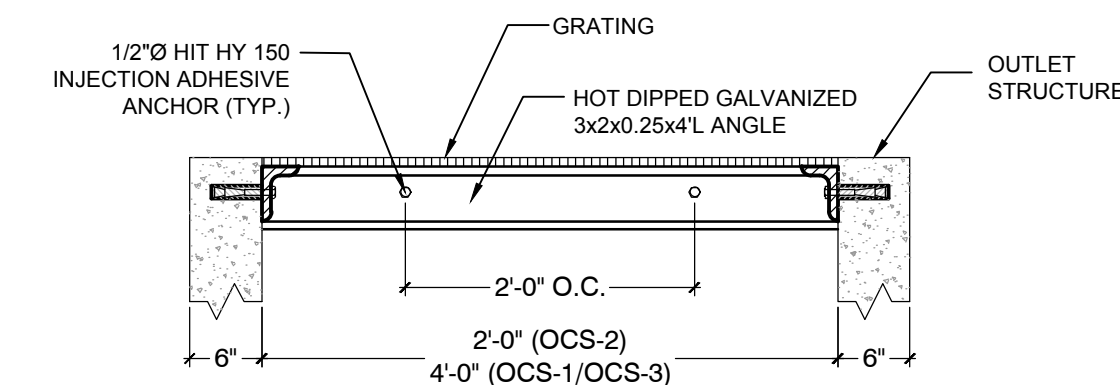
3 CONTECH CDS-2015-4-C INLINE UNIT DETAIL
SCALE: N.T.S.



2 OUTLET CONTROL STRUCTURE (OCS) - TYPE 1 - OCS 501
SCALE: N.T.S.

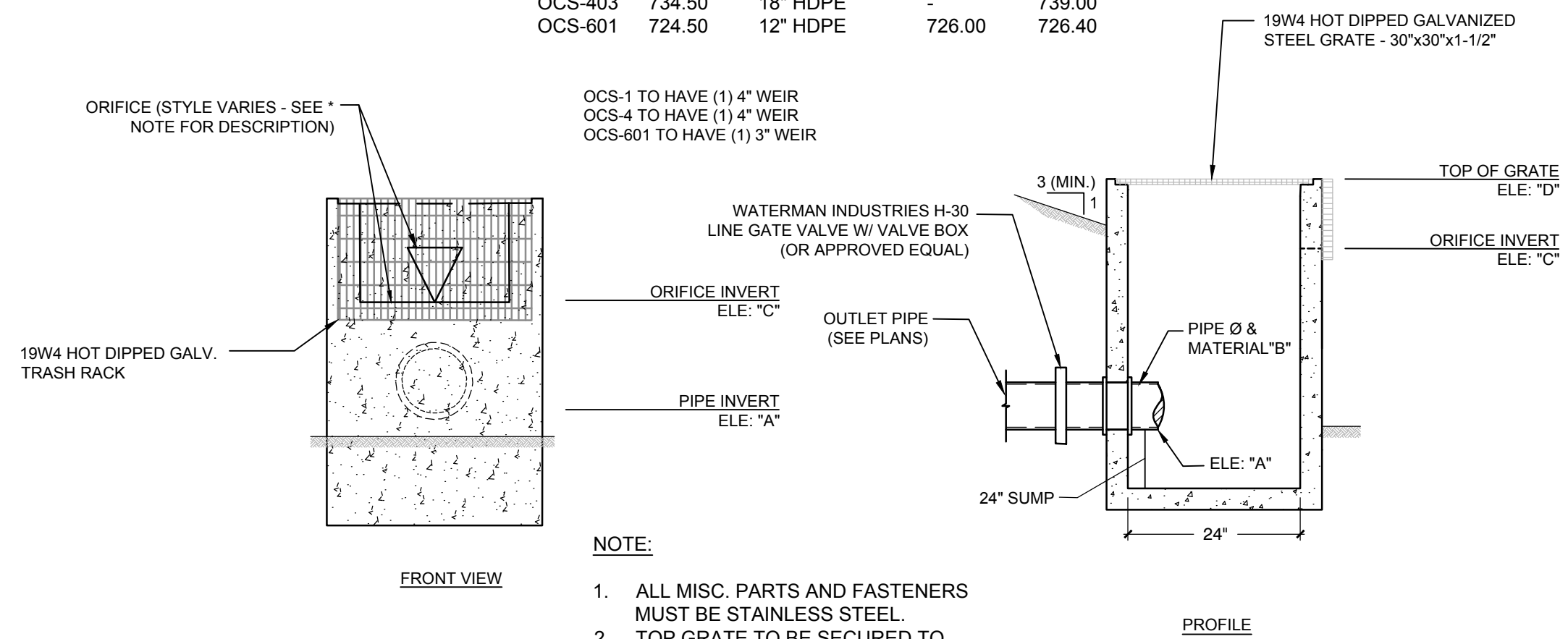
NOTES:

1. OUTLET STRUCTURE TO BE 2'X2' OR 4'X4' (INTERIOR DIMENSIONS - SEE SPECIFICATIONS BELOW) WIDE WITH A 4" SUMP PRECAST CONCRETE STRUCTURE.
2. SEE CATCH BASIN DETAIL FOR MATERIAL AND CONSTRUCTION SPECIFICATIONS.
3. TRASH RACK BAR GRATE TO BE GALVANIZED OR PAINTED (2 COATS W/RUST INHIBITOR BLACK PAINT).
4. IF MORE THAN 2 TRASH RACK GRATE PANELS ARE USED, PANELS ARE TO BE BOLTED TO ANGLES W/ GALV. BOLTS AT EACH CORNER.



OUTLET STRUCTURE CONFIGURATION SUMMARY

	A	B	C	D
OCS-1	712.90	12" HDPE	714.70	715.30
OCS-4	715.30	6" HDPE	715.80	717.40
OCS-114	730.00	12" HDPE	-	734.30
OCS-403	734.50	18" HDPE	-	739.00
OCS-601	724.50	12" HDPE	726.00	726.40



4 OUTLET CONTROL STRUCTURE (OCS) - TYPE 2
SCALE: N.T.S.

- NOTE:**
1. ALL MISC. PARTS AND FASTENERS MUST BE STAINLESS STEEL.
 2. TOP GRATE TO BE SECURED TO STRUCTURE.

Consultants:

Revisions:

No.	Date	Description

COA:

Seal:

Issued For:

CONSTRUCTION DOCUMENTS

Scale:

Date: 02/14/2024
Drawn By: AG, KH
Reviewed By: JM
Approved By: BK
W&S Project No.: ENG22-0852
W&S File No.:

Drawing Title:

DRAINAGE & UTILITIES DETAILS

Sheet Number:

UT702



Project Address:

© Copyright 2021

All original artwork and design is the sole property of ISI, and all rights are reserved until services rendered to client are paid in full.

Designer/Project Manager

R. Biggins / Jo Bisbee

jo@intelligentsignage.com
413-409-8195

Production will not begin without a signed and checked approval on all final layouts.

Please proof this layout carefully, check the appropriate box, sign and date.

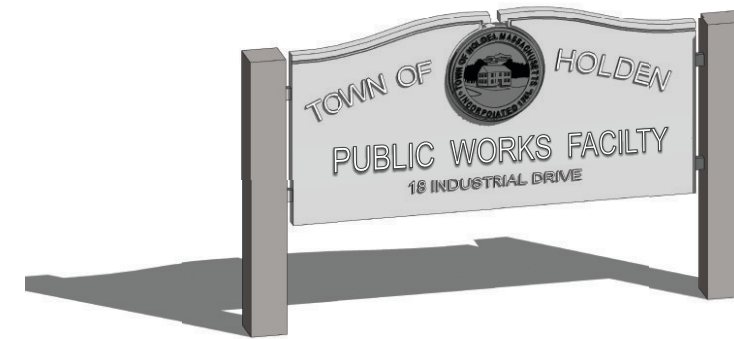
Return layout(s) directly to your Project Manager or jo@intelligentsignage.com

- Approved, as is
- Approved, with changes
- Requires New Layout
- Rejected

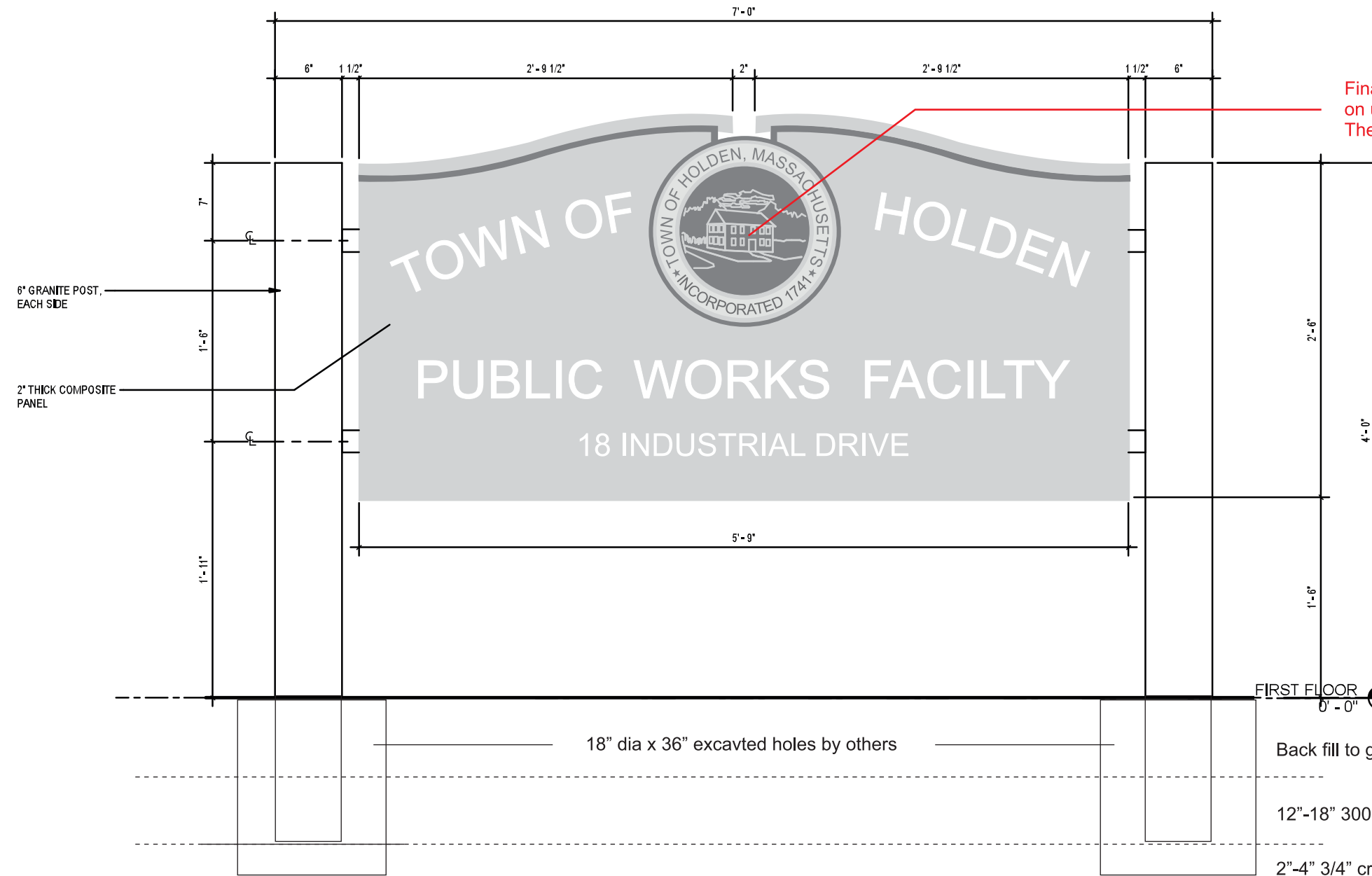
Customer Signature Required

Date Signed

- Preliminary
- For Production



Final color/s of town seal will be based on updated submitted artwork from The Town of Holden (Seal section may require additional approval)



2 EXTERIOR GROUND SIGN - FRONT VIEW
1 1/2" = 1'-0"
1/A932

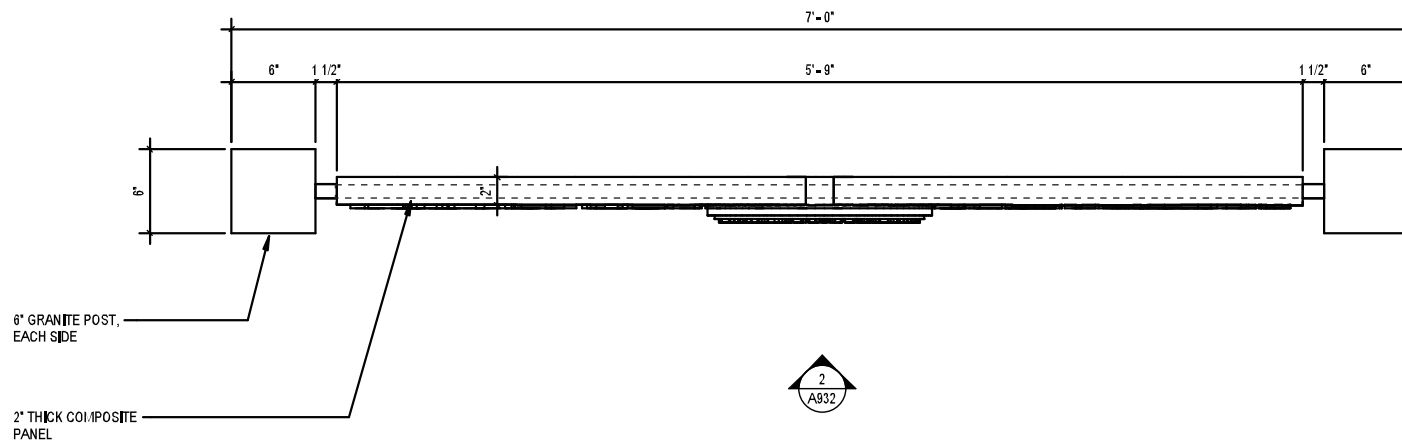
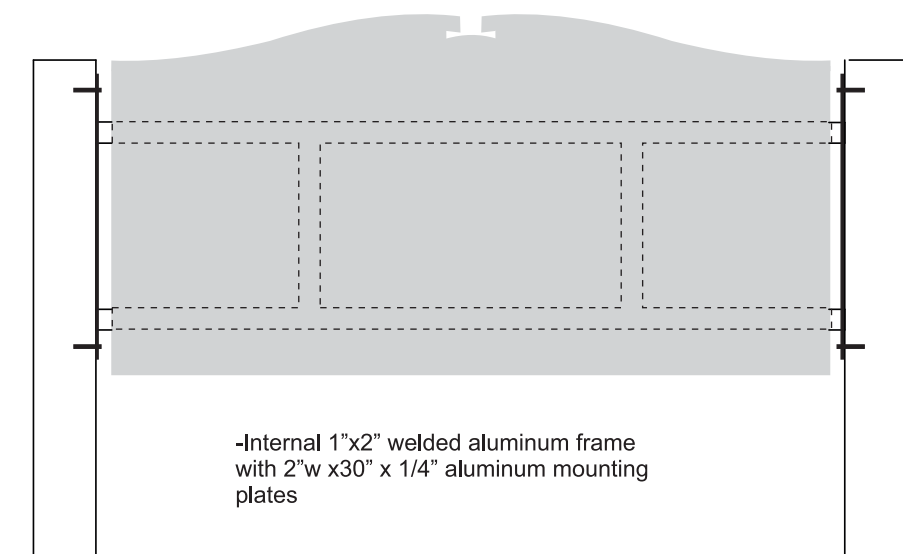
Reveal TBD

- COLORS & FINISHES
- Pantone 420C
 - Pantone 2332C
 - Pantone Cool Grey 1C
 - White Main Text
 - Black Mounting supports

colors shown are representation only

- SPECIFICATIONS
- HDU Sign-foam 4 series/ 15lb cnc routed as per supplied drawing.
 - Multi level routed town seal and text.
 - Internal Aluminum frame w/ mounting plates. Finish/Exposed frame & hardware painted black

- INSTALLATION
- Mount method
Granite Posts Direct Burial
 - Mount surface
Aluminum Plate to Granite Post
 - Mount height
1'-6" above grade to sign bottom



Custom HDU post and panel sign.