

Plotted By: Fabrizio, Joe - Sheet Set: KHA - Layout: I COVER SHEET - January 31, 2024, 04:00:02pm. K:\BOS\TPT\112664003 - Weymouth Lovell Field Pedestrian Bridge Design\CAD\PlanSheets\C0.0 Cover Sheet.dwg
 This document, together with the concepts and designs presented herein, as an instrument of service, is intended only for the specific purpose and client for which it was prepared. Reuse of and improper reliance on this document without written authorization and adaptation by Kimley-Horn and Associates, Inc. shall be without liability to Kimley-Horn and Associates, Inc.

CONSTRUCTION DRAWINGS

LOVELL FIELD PEDESTRIAN BRIDGE PROJECT

WEYMOUTH, MASSACHUSETTS

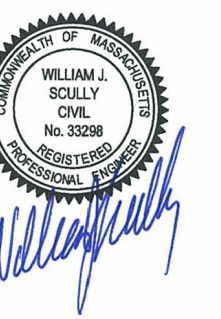
INDEX	
SHEET NUMBER	SHEET TITLE
1	COVER SHEET
2	LEGEND
3	EXISTING CONDITIONS
4	CONSTRUCTION NOTES
5	CONSTRUCTION DETAILS
6	GENERAL LAYOUT & PROFILE
7	SUBSURFACE BORING LOCATIONS
8	BRIDGE PROFILE
9	BRIDGE STRUCTURAL GENERAL NOTES
10	BRIDGE DETAILS
11	MISC. BRIDGE DETAILS
12	PREFAB TRUSS SUPERSTRUCTURE
13	BRIDGE ELECTRICAL DETAILS
14	EROSION CONTROL
15	CONSTRUCTION ACCESS AND STAGING



THE MASSACHUSETTS HIGHWAY DEPARTMENT STANDARD SPECIFICATIONS FOR HIGHWAYS AND BRIDGES DATED 2022, THE 2017 CONSTRUCTION STANDARD DETAILS, THE 2009 MANUAL ON UNIFORM TRAFFIC CONTROL DEVICES FOR STREETS AND HIGHWAYS WITH MASSACHUSETTS AMENDMENTS, THE 1990 STANDARD DRAWINGS FOR SIGNS AND SUPPORTS, THE 1968 STANDARD DRAWINGS FOR TRAFFIC SIGNALS AND HIGHWAY LIGHTING, THE 2017 AMERICAN ASSOCIATION OF STATE HIGHWAY AND TRANSPORTATION OFFICIALS LRFD BRIDGE DESIGN SPECIFICATIONS, THE TOWN OF WEYMOUTH REGULATIONS AND PERMITTING CONDITIONS AND THE LATEST EDITION OF THE AMERICAN STANDARD FOR NURSERY STOCK, WILL GOVERN.

PROJECT PROPONENT
TOWN OF WEYMOUTH 75 MIDDLE STREET WEYMOUTH, MA 01770 TEL: (781)-335-2000 CONTACT: ROBERT LUONGO

PROJECT TEAM
CIVIL ENGINEER KIMLEY-HORN AND ASSOCIATES 404 WYMAN STREET, SUITE 385 WALTHAM, MA 02451 TEL: (781)-328-0676 CONTACT: WILLIAM SCULLY, P.E.
STRUCTURAL ENGINEER KIMLEY-HORN AND ASSOCIATES 200 SOUTH TRYON STREET, SUITE 200 CHARLOTTE, NC 28202 TEL: (704)-333-5131 CONTACT: SETH DENNEY, P.E.



KHA PROJECT	112664003	DATE	12/21/2023
SCALE	AS SHOWN	DESIGNED BY	
DRAWN BY		CHECKED BY	

COVER SHEET

**LOVELL FIELD PEDESTRIAN
BRIDGE PROJECT**
 PREPARED FOR
TOWN OF WEYMOUTH
 WEYMOUTH MASSACHUSETTS

SHEET NUMBER
1

No.	REVISIONS	DATE	BY
	BOARDWALK REMOVAL	12/21/2023	JF

Plotted By: Fabrizio, Joe - Sheet Set: KHA - Layout: 2 LEGEND - January 21, 2024 - 04:00:09pm - K:\BOS - TPO\112664003 - Weymouth Lovell Field Pedestrian Bridge Design\CAD\PlanSheets\C2.0_Layout.dwg
This document, together with the concepts and designs presented herein, is intended only for the specific purpose and client for which it was prepared. Reuse of and improper reliance on the document without written authorization and adaptation by Kimley-Horn and Associates, Inc. shall be without liability to Kimley-Horn and Associates, Inc.

ABBREVIATIONS

GENERAL	
AADT	ANNUAL AVERAGE DAILY TRAFFIC
ABAN	ABANDON
ADJ	ADJUST
APPROX.	APPROXIMATE
A.C.	ASPHALT CONCRETE
ACCM PIPE	ASPHALT COATED CORRUGATED METAL PIPE
BERM	CAP COD BERM
BIT.	BITUMINOUS
BC	BOTTOM OF CURB
BD.	BOUND
BL	BASELINE
BLDG	BUILDING
BM	BENCHMARK
BO	BY OTHERS
BOS	BOTTOM OF SLOPE
BR.	BRIDGE
CB	CATCH BASIN
CBCI	CATCH BASIN WITH CURB INLET
CC	CEMENT CONCRETE
CCM	CEMENT CONCRETE MASONRY
CEM	CEMENT
CI	CURB INLET
CIP	CAST IRON PIPE
CLF	CHAIN LINK FENCE
CL	CENTERLINE
CMP	CORRUGATED METAL PIPE
CSP	CORRUGATED STEEL PIPE
CO.	COUNTY
CONC	CONCRETE
CONT	CONTINUOUS
CONST	CONSTRUCTION
CR GR	CROWN GRADE
DHV	DESIGN HOURLY VOLUME
DI	DROP INLET
DIA	DIAMETER
DIP	DUCTILE IRON PIPE
DW	STEADY DON'T WALK - PORTLAND ORANGE
DWY	DRIVEWAY
EHH	ELECTRIC HANDHOLE
ELEV (or EL.)	ELEVATION
EMB	EMBANKMENT
EMH	ELECTRIC MANHOLE
EOP	EDGE OF PAVEMENT
ET	ELECTRIC TRANSFORMER
EXIST (or EX)	EXISTING
EXC	EXCAVATION
F&C	FRAME AND COVER
F&G	FRAME AND GRATE
FDN.	FOUNDATION
FLDSTN	FIELDSTONE
GAR	GARAGE
GD	GROUND
GG	GAS GATE
GI	GUTTER INLET
GIP	GALVANIZED IRON PIPE
GRAN	GRANITE
GRAV	GRAVEL
GRD	GUARD
GW	GUY WIRE
HDW	HEADWALL
HMA	HOT MIX ASPHALT
HOR	HORIZONTAL
HYD	HYDRANT
INV	INVERT
JCT	JUNCTION
L	LENGTH OF CURVE
LB	LEACH BASIN
LP	LIGHT POLE
LT	LEFT
MAX	MAXIMUM
MB	MAILBOX
MH	MANHOLE
MHB	MASSACHUSETTS HIGHWAY BOUND
MIN	MINIMUM
NIC	NOT IN CONTRACT
NO.	NUMBER
OH	OVERHEAD WIRE
PC	POINT OF CURVATURE
PCC	POINT OF COMPOUND CURVATURE
P.G.L.	PROFILE GRADE LINE

ABBREVIATIONS (cont.)

GENERAL	
PI	POINT OF INTERSECTION
POC	POINT ON CURVE
POT	POINT ON TANGENT
PRC	POINT OF REVERSE CURVATURE
PROJ	PROJECT
PROP	PROPOSED
PSB	PLANTABLE SOIL BORROW
PT	POINT OF TANGENCY
PVC	POINT OF VERTICAL CURVATURE
PVI	POINT OF VERTICAL INTERSECTION
PVT	POINT OF VERTICAL TANGENCY
PVMT	PAVEMENT
PWW	PAVED WATER WAY
R	RADIUS OF CURVATURE
R&D	REMOVE AND DISPOSE
RCP	REINFORCED CONCRETE PIPE
RD	ROAD
RDWY	ROADWAY
REM	REMOVE
RET	RETAIN
RET WALL	RETAINING WALL
ROW	RIGHT OF WAY
RR	RAILROAD
RRFB	RECTANGULAR RAPID FLASH BEACON
R&R	REMOVE AND RESET
R&S	REMOVE AND STACK
RT	RIGHT
SB	STONEBOUND
SHLD	SHOULDER
SMH	SEWER MANHOLE
ST	STREET
STA	STATION
SSD	STOPPING SIGHT DISTANCE
SHLO	STATE HIGHWAY LAYOUT LINE
SW	SIDEWALK
T	TANGENT DISTANCE OF CURVE/TRUCK %
TAN	TANGENT
TEMP	TEMPORARY
TC	TOP OF CURB
TMH	TELEPHONE MANHOLE
TOS	TOP OF SLOPE
TYP	TYPICAL
UP	UTILITY POLE
VAR	VARIES
VERT	VERTICAL
VC	VERTICAL CURVE
VGC	VERTICAL GRANITE CURBING
WCR	WHEEL CHAIR RAMP
WG	WATER GATE
WIP	WROUGHT IRON PIPE
WM	WATER METER/WATER MAIN
X-SECT	CROSS SECTION

TRAFFIC SIGNAL ABBREVIATIONS

CAB	CABINET
CCVE	CLOSED CIRCUIT VIDEO EQUIPMENT
DW	STEADY UPRAISED HAND
FDW	FLASHING UPRAISED HAND
FR	FLASHING CIRCULAR RED
FRL	FLASHING RED LEFT ARROW
FRR	FLASHING RED RIGHT ARROW
FY	FLASHING CIRCULAR YELLOW
FYL	FLASHING YELLOW LEFT ARROW
FYR	FLASHING YELLOW RIGHT ARROW
G	STEADY CIRCULAR GREEN
GL	STEADY GREEN LEFT ARROW
GR	STEADY GREEN RIGHT ARROW
GSL	STEADY GREEN SLASH LEFT ARROW
GSR	STEADY GREEN SLASH RIGHT ARROW
GV	STEADY GREEN VERTICAL ARROW
OL	OVERLAP
PED	PEDESTRIAN
PTZ	PAN, TILT, ZOOM
R	STEADY CIRCULAR RED
RL	STEADY RED LEFT ARROW
RR	STEADY RED RIGHT ARROW
TR SIG	TRAFFIC SIGNAL
TSC	TRAFFIC SIGNAL CONDUIT
W	STEADY WALKING PERSON
Y	STEADY CIRCULAR YELLOW
YL	STEADY YELLOW LEFT ARROW

GENERAL SYMBOLS

EXISTING	PROPOSED	DESCRIPTION
		JERSEY BARRIER
		CATCH BASIN
		CATCH BASIN CURB INLET
		FLAG POLE
		GAS PUMP
		MAIL BOX
		POST SQUARE
		POST CIRCULAR
		WELL
		ELECTRIC HANDHOLE
		FENCE GATE POST
		GAS GATE
		BORING HOLE
		MONITORING WELL
		TEST PIT
		HYDRANT
		LIGHT POLE
		COUNTY BOUND
		GPS POINT
		CABLE MANHOLE
		DRAINAGE MANHOLE
		ELECTRIC MANHOLE
		GAS MANHOLE
		MISC MANHOLE
		SEWER MANHOLE
		TELEPHONE MANHOLE
		WATER MANHOLE
		MASSACHUSETTS HIGHWAY BOUND
		MONUMENT
		STONE BOUND
		TOWN OR CITY BOUND
		TRAVERSE OR TRIANGULATION STATION
		TROLLEY POLE OR GUY POLE
		STATE HIGHWAY LAYOUT LINE
		UTILITY POLE W/ FIREBOX
		UTILITY POLE WITH DOUBLE LIGHT
		UTILITY POLE W / 1 LIGHT
		UTILITY POLE
		BUSH
		TREE
		STUMP
		SWAMP / MARSH
		WATER GATE
		PARKING METER
		OVERHEAD CABLE/WIRE
		CURBING
		CONTOURS (ON-THE-GROUND SURVEY DATA)
		CONTOURS (PHOTOGRAMMETRIC DATA)
		UNDERGROUND STORM PIPE (DOUBLE LINE 24 INCH AND OVER)
		UNDERGROUND ELECTRIC DUCT (DOUBLE LINE 24 INCH AND OVER)
		UNDERGROUND GAS MAIN (DOUBLE LINE 24 INCH AND OVER)
		UNDERGROUND SEWER FORCE MAIN (DOUBLE LINE 24 INCH AND OVER)
		UNDERGROUND SEWER LINE (DOUBLE LINE 24 INCH AND OVER)
		UNDERGROUND WATER MAIN (DOUBLE LINE 24 INCH AND OVER)
		BALANCED STONE WALL
		GUARD RAIL - STEEL POSTS
		GUARD RAIL - WOOD POSTS
		GUARD RAIL - DOUBLE FACE - STEEL POSTS
		GUARD RAIL - DOUBLE FACE - WOOD POSTS
		CHAIN LINK OR METAL FENCE
		WOOD FENCE
		HAY BALES/SILT FENCE
		TREE LINE
		SAWCUT LINE
		TOP OR BOTTOM OF SLOPE
		LIMIT OF EDGE OF PAVEMENT OR COLD PLANE AND OVERLAY
		BANK OF RIVER OR STREAM
		BORDER OF WETLAND
		100 FT WETLAND BUFFER
		200 FT RIVERFRONT BUFFER
		STATE HIGHWAY LAYOUT
		TOWN OR CITY LAYOUT
		COUNTY LAYOUT
		RAILROAD SIDELINE
		TOWN OR CITY BOUNDARY LINE
		PROPERTY LINE OR APPROXIMATE PROPERTY LINE
		EASEMENT

TRAFFIC SYMBOLS

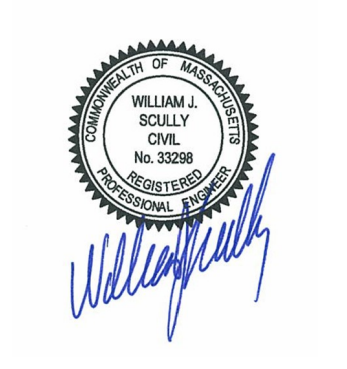
EXISTING	PROPOSED	DESCRIPTION
		CONTROLLER PHASE ACTUATED
		TRAFFIC SIGNAL HEAD (SIZE AS NOTED)
		WIRE LOOP DETECTOR (6' x 6' TYP UNLESS OTHERWISE SPECIFIED)
		VIDEO DETECTION CAMERA
		MICROWAVE DETECTOR
		PEDESTRIAN PUSH BUTTON, SIGN (DIRECTIONAL ARROW AS SHOWN) AND SADDLE
		EMERGENCY PREEMPTION CONFIRMATION STROBE LIGHT
		VEHICULAR SIGNAL HEAD
		VEHICULAR SIGNAL HEAD, OPTICALLY PROGRAMMED
		FLASHING BEACON
		PEDESTRIAN SIGNAL HEAD, (TYPE AS NOTED OR AS SPECIFIED)
		RAILROAD SIGNAL
		SIGNAL POST AND BASE (ALPHA-NUMERIC DESIGNATION NOTED)
		MAST ARM, SHAFT AND BASE (ARM LENGTH AS NOTED)
		HIGH MAST POLE OR TOWER
		SIGN AND POST
		SIGN AND POST (2 POSTS)
		MAST ARM WITH LUMINAIRE
		OPTICAL PRE-EMPTION DETECTOR
		CONTROL CABINET, GROUND MOUNTED
		CONTROL CABINET, POLE MOUNTED
		FLASHING BEACON CONTROL AND METER PEDESTAL
		LOAD CENTER ASSEMBLY
		PULL BOX 12"x12" (OR AS NOTED)
		ELECTRIC HANDHOLE 12"x24" (OR AS NOTED)
		TRAFFIC SIGNAL CONDUIT

PAVEMENT MARKINGS SYMBOLS

EXISTING	PROPOSED	DESCRIPTION
		PAVEMENT ARROW - WHITE
		LEGEND "ONLY" - WHITE
		STOP LINE
		CROSSWALK
		SOLID WHITE LINE - 6"
		SOLID YELLOW LINE - 6"
		BROKEN WHITE LINE - 6" (10' LINE SEGMENT AND 30' GAP)
		BROKEN YELLOW LINE - 6" (10' LINE SEGMENT AND 30' GAP)
		DOTTED WHITE LINE - 6" (3' LINE SEGMENT AND 9' GAP)
		DOTTED YELLOW LINE - 6" (3' LINE SEGMENT AND 9' GAP)
		DOTTED WHITE LINE EXTENSION - 6" (2' LINE SEGMENT AND 6' GAP)
		DOTTED YELLOW LINE EXTENSION - 6" (2' LINE SEGMENT AND 6' GAP)
		DOUBLE WHITE LINE - 6"
		DOUBLE YELLOW LINE - 6"

NO.	REVISIONS	DATE	BY
	BOARDWALK REMOVAL	12/21/2023	JF

© 2023 KIMLEY-HORN AND ASSOCIATES, INC.
404 WYMAN STREET, SUITE 305, WALTHAM, MA 02451
PHONE: 781-328-0676
WWW.KIMLEY-HORN.COM



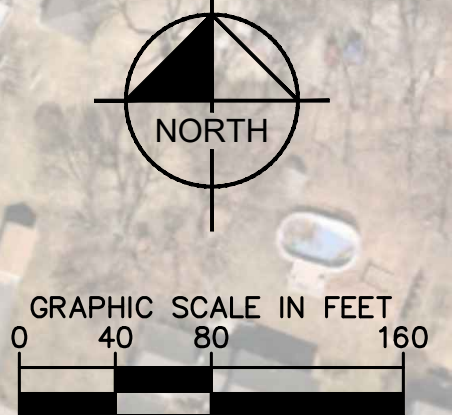
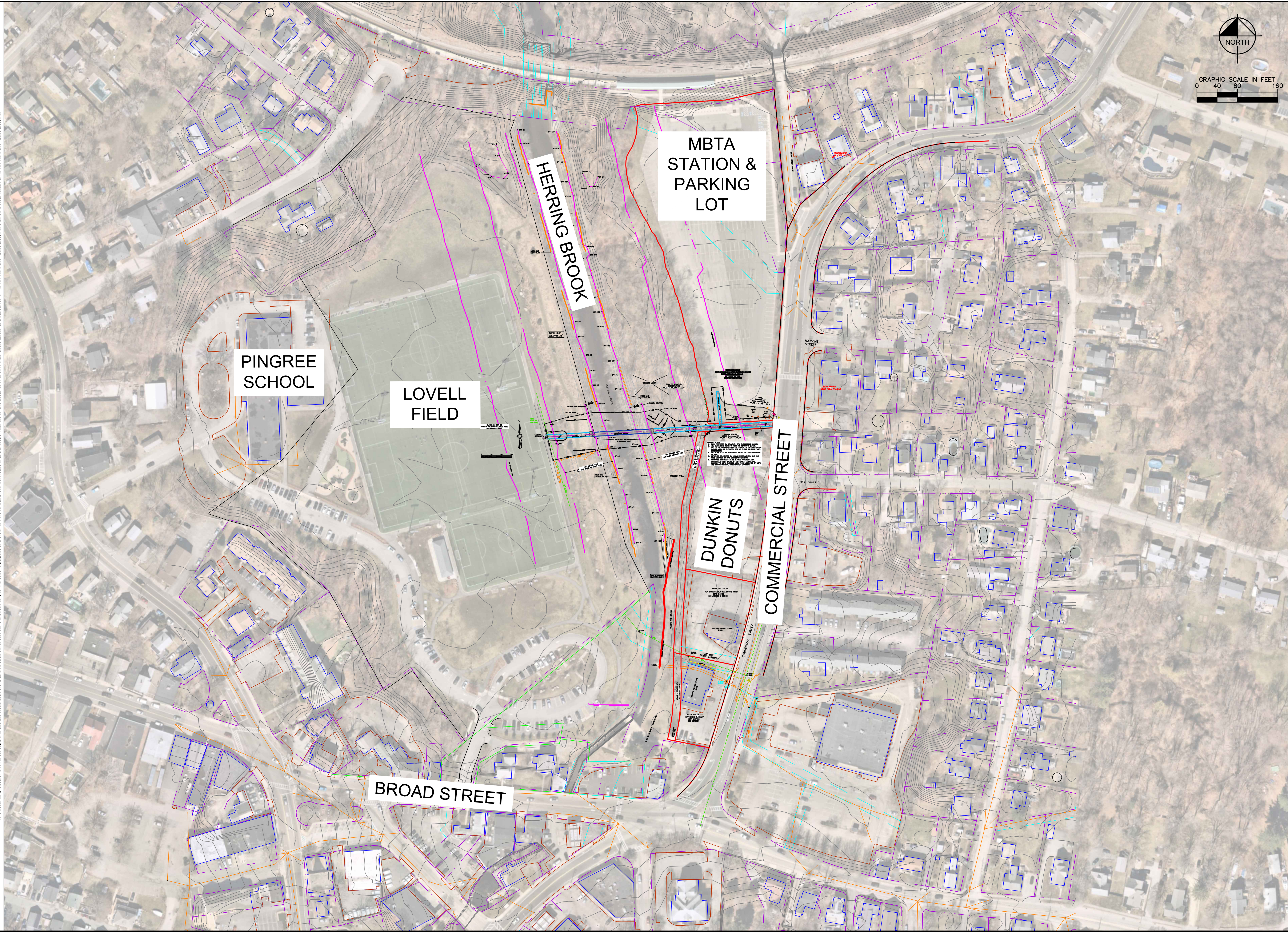
KHA PROJECT	112664003
DATE	12/21/2023
SCALE	AS SHOWN
DESIGNED BY	
DRAWN BY	
CHECKED BY	

LEGEND

LOVELL FIELD PEDESTRIAN BRIDGE PROJECT
PREPARED FOR
TOWN OF WEYMOUTH

WEYMOUTH MASSACHUSETTS

Plotted By: Fabrizio, Joe - Sheet Set: KIML...
This document, together with the concepts and designs presented herein, is an instrument of service, as an instrument of service, is intended only for the specific purpose and client for which it was prepared. Reuse of and improper reliance on the document without written authorization and adaptation by Kimley-Horn and Associates, Inc. shall be without liability to Kimley-Horn and Associates, Inc.



No.	REVISIONS	DATE	BY
1	BOARDWALK REMOVAL	12/21/2023	JF

Kimley >>> Horn
 © 2023 KIMLEY-HORN AND ASSOCIATES, INC.
 404 WYMAN STREET, SUITE 385, WALTHAM, MA 02451
 PHONE: 781-328-0676
 WWW.KIMLEY-HORN.COM

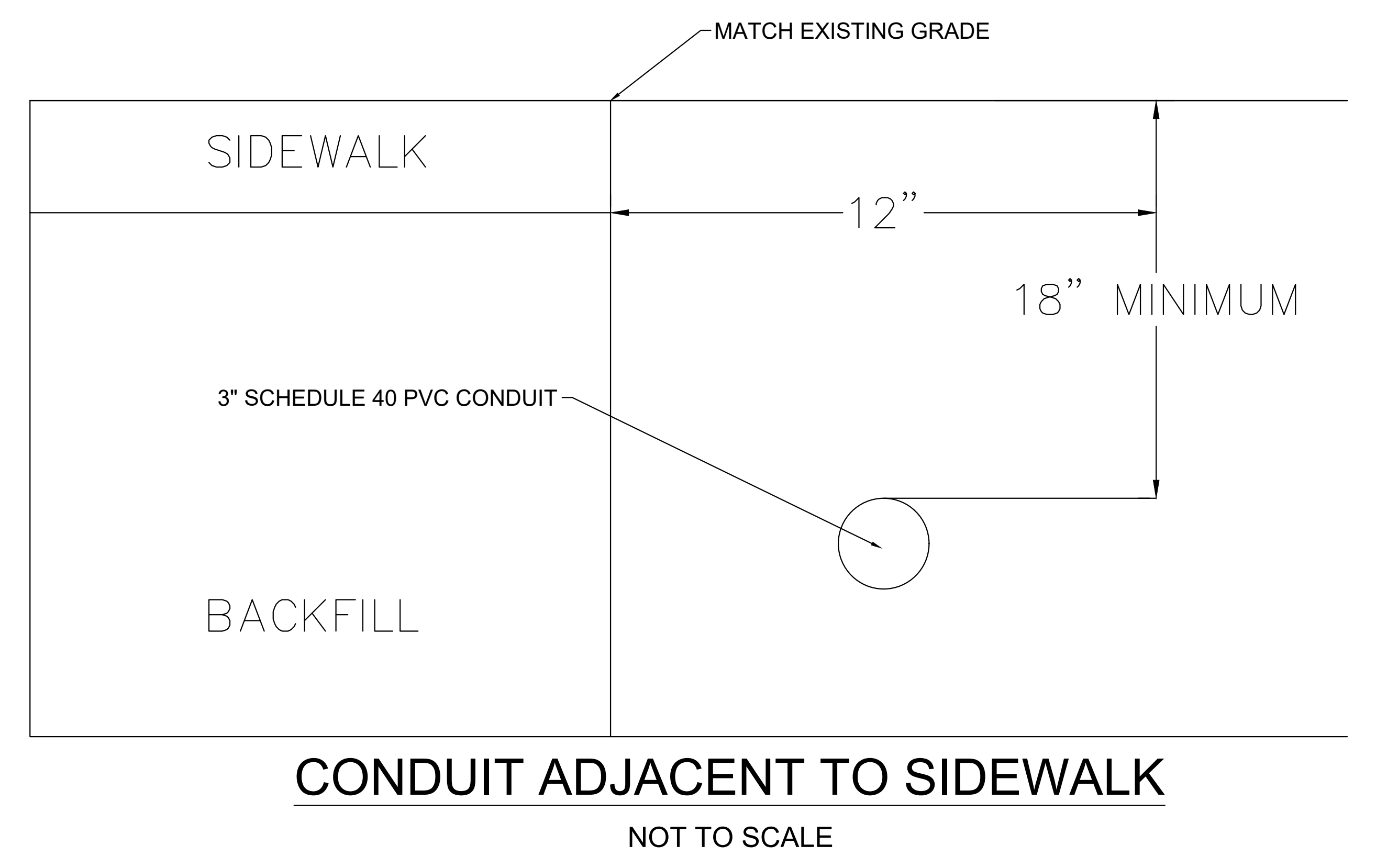
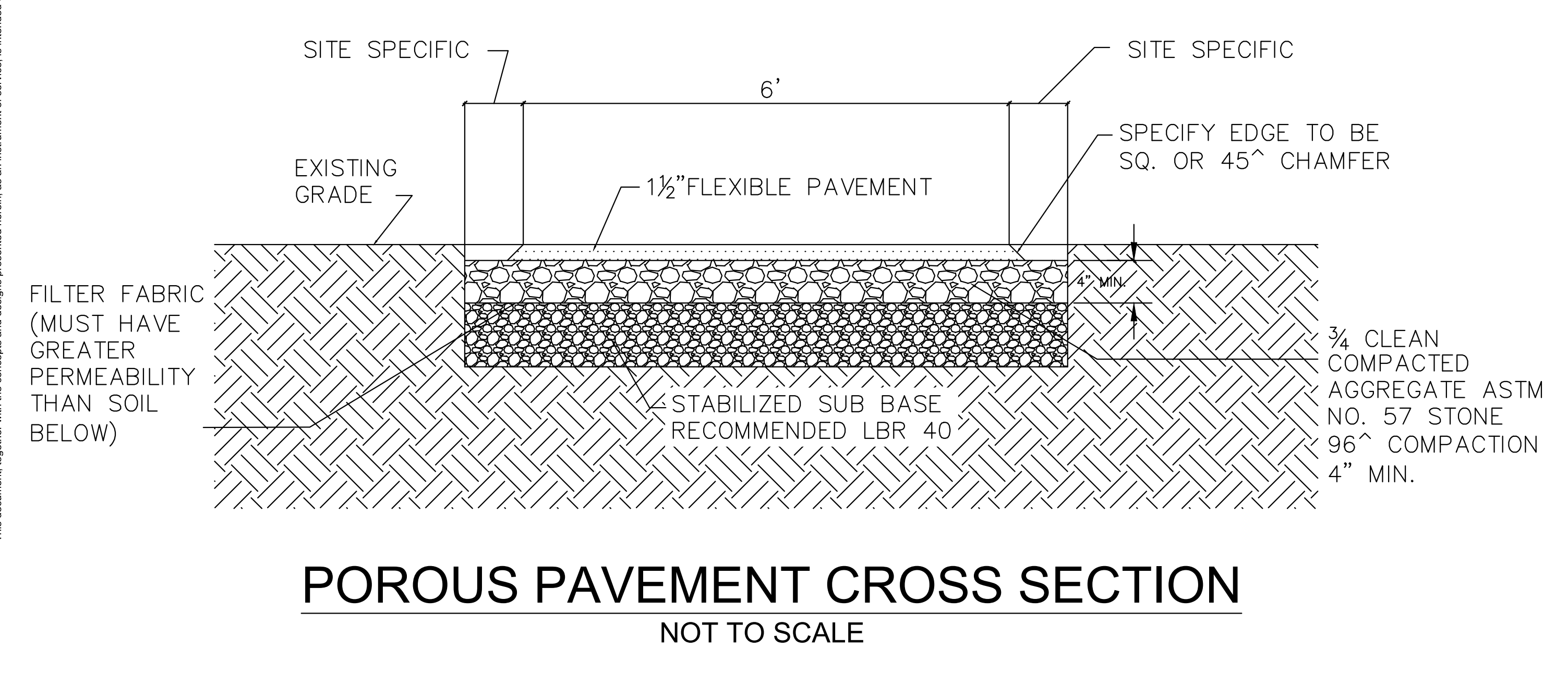
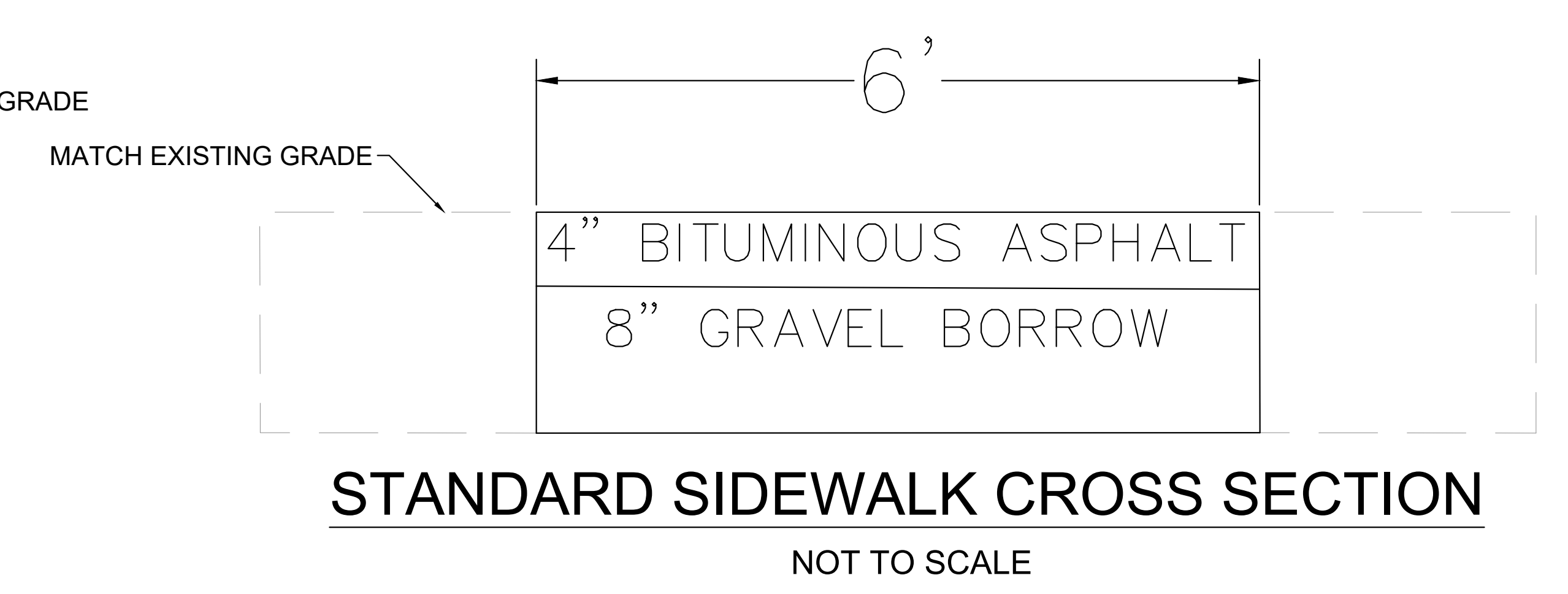
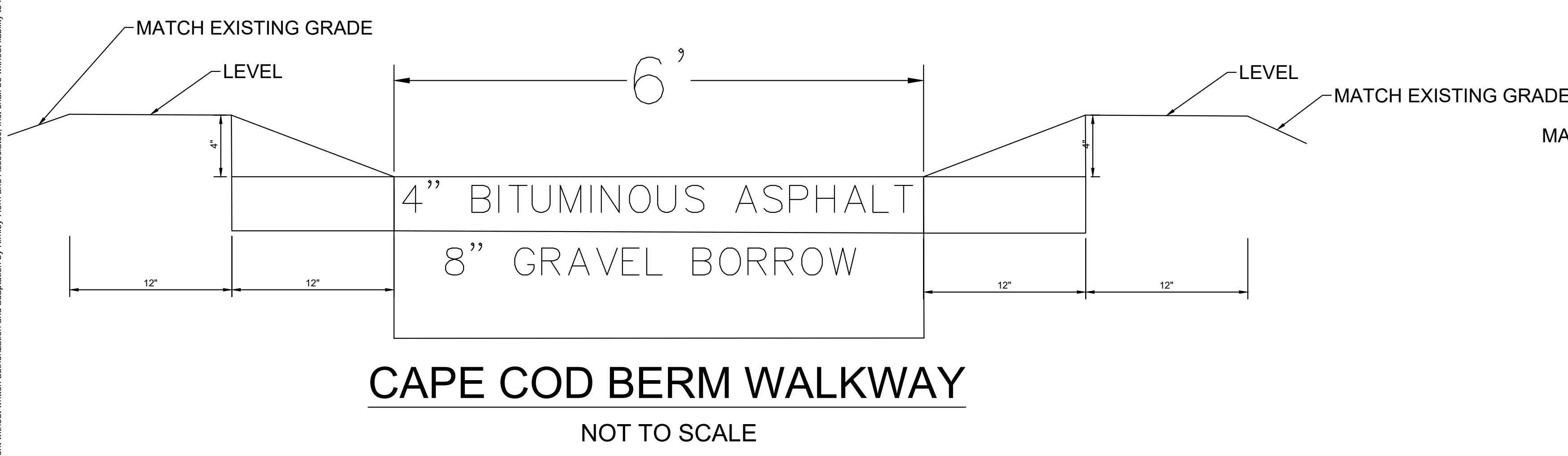


KHA PROJECT	112664003
DATE	12/21/2023
SCALE	AS SHOWN
DESIGNED BY	JF
DRAWN BY	JF
CHECKED BY	WS

EXISTING CONDITIONS

LOVELL FIELD PEDESTRIAN BRIDGE PROJECT
 PREPARED FOR
TOWN OF WEYMOUTH
 WEYMOUTH MASSACHUSETTS

Plotted By: Fabrizio, Joe - Sheet Set: KHA - Layout: E: CONSTRUCTION DETAILS - January 31, 2024, 04:00:29pm - KIBOS - TPTD: 112664003 - Weymouth Lovell Field Pedestrian Bridge Design/CADD/Plan/Sheet/C-5.0 Construction Details.dwg
 This document, together with the concepts and designs presented herein, is intended only for the specific purpose and client for which it was prepared. Reuse and improper reliance on this document without written authorization and adaptation by Kimley-Horn and Associates, Inc. shall be without liability to Kimley-Horn and Associates, Inc.



No.	REVISIONS	DATE	BY
1	BOARDWALK REMOVAL	12/21/2023	JF

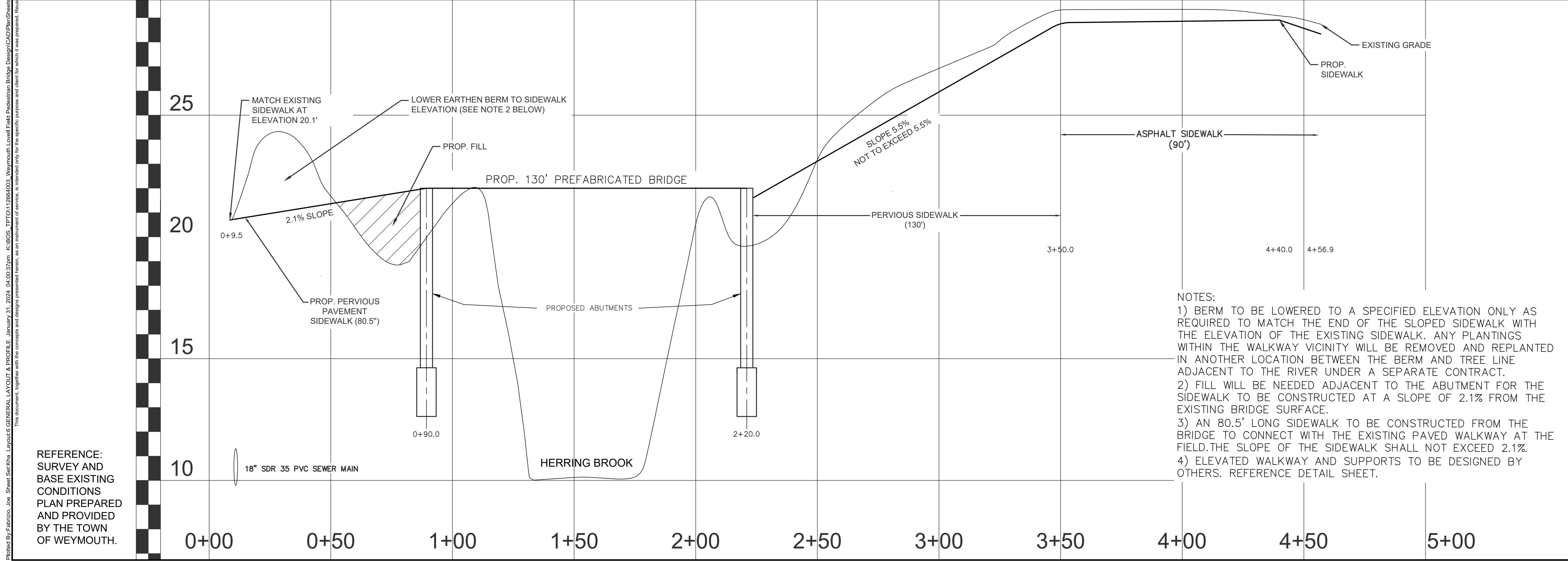
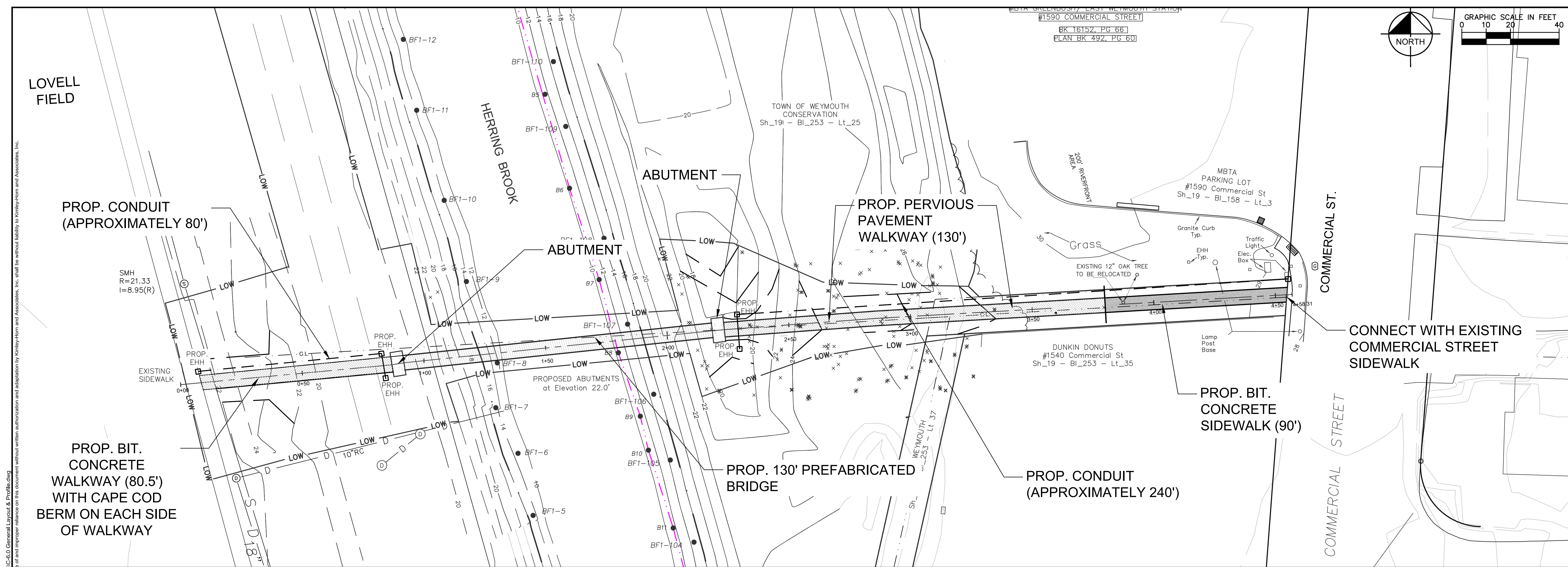
Kimley >>> Horn
 © 2023 KIMLEY-HORN AND ASSOCIATES, INC.
 404 WYMAN STREET, SUITE 385, WALTHAM, MA 02451
 PHONE: 781-328-0676
 WWW.KIMLEY-HORN.COM

WILLIAM A. SCULLY
 CIVIL ENGINEER
 No. 13328
 State of Massachusetts

KHA PROJECT: 112664003
 DATE: 12/21/2023
 SCALE: AS SHOWN
 DESIGNED BY: [Signature]
 DRAWN BY:
 CHECKED BY:

CONSTRUCTION DETAILS

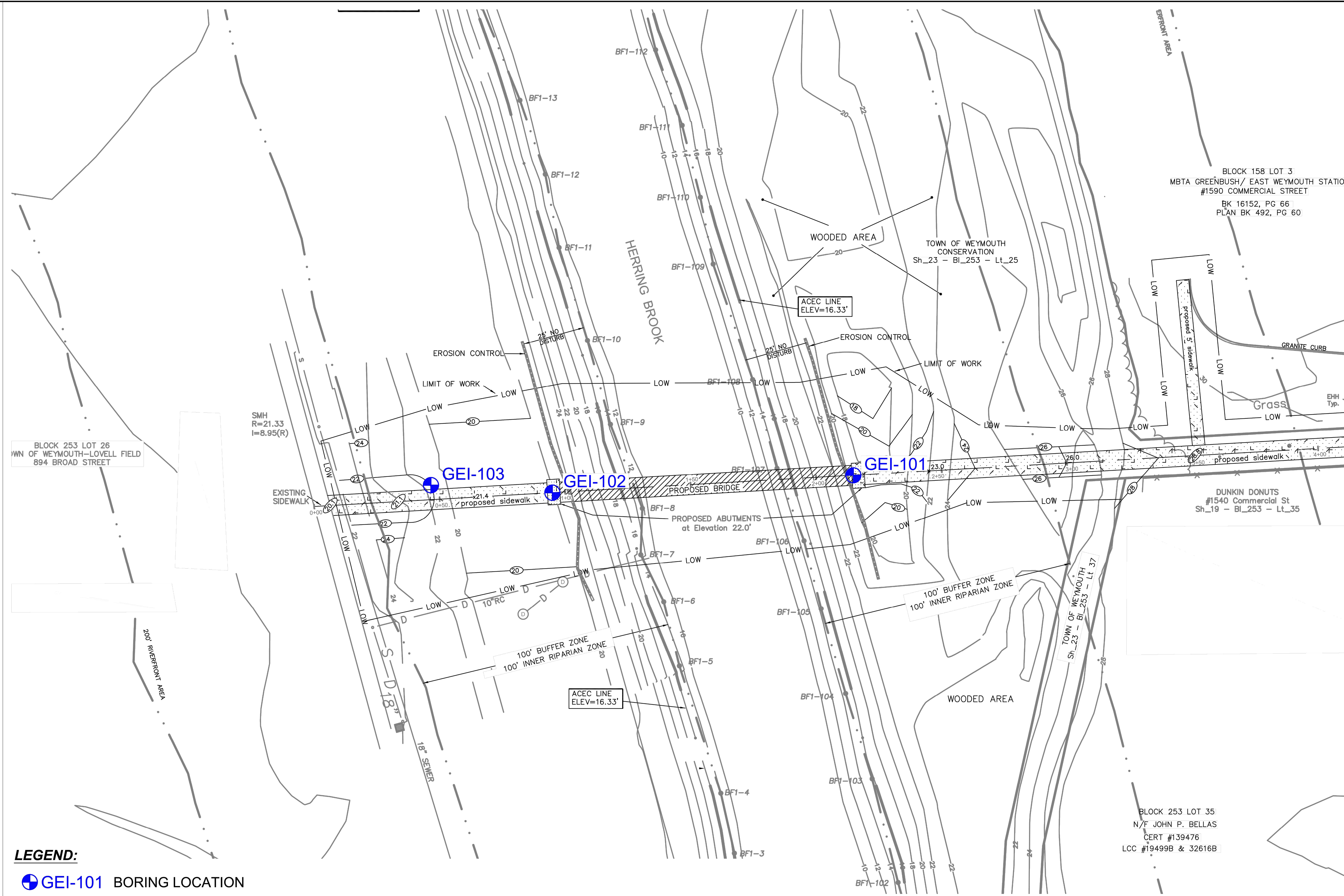
LOVELL FIELD PEDESTRIAN BRIDGE PROJECT
 PREPARED FOR
 TOWN OF WEYMOUTH
 WEYMOUTH MASSACHUSETTS



Plotted By: Fabrizio, Joe. Sheet Set: Kim. Layout: E GENERAL LAYOUT & PROFILE. January 31, 2024. 04:00:37pm. KUBOS. TPT0112864003. Weymouth Lovell Field Pedestrian Bridge. Design: CAD/Plan/Sheet: C-6.0 General Layout & Profile.dwg. This document, together with the concepts and designs presented herein, as an instrument of service, is intended only for the specific purpose and client for which it was prepared. Release of and improper reliance on this document without written authorization and adaptation by Kimley-Horn and Associates, Inc. shall be without liability to Kimley-Horn and Associates, Inc.

KHA PROJECT 112664003		DATE 12/21/2023		SCALE AS SHOWN		DESIGNED BY		DRAWN BY		CHECKED BY	
KIMLEY-HORN & ASSOCIATES, INC. 404 WYMAN STREET, SUITE 305, WALTHAM, MA 02451 PHONE: 781-328-0676 WWW.KIMLEY-HORN.COM		REVISIONS		NO.		DATE		BY		DATE	
		Kimley-Horn									
GENERAL LAYOUT & PROFILE											
LOVELL FIELD PEDESTRIAN BRIDGE PROJECT PREPARED FOR TOWN OF WEYMOUTH WEYMOUTH MASSACHUSETTS											
SHEET NUMBER 6											

Plotted By: Fabrizio, Joe - Sheet Set: Kim - Layout: 8 SUBSURFACE BORING LOCATIONS January 31, 2024 04:00:49pm K:\BOS_TPT\112664003_Weymouth Lovell Field Pedestrian Bridge Design\CAD\PlanSheets\C-8.0 Subsurface.dwg
This document, together with the concepts and designs presented herein, as an instrument of service, is intended only for the specific purpose and client for which it was prepared. Reuse of and improper reliance on this document without written authorization and adaptation by Kimley-Horn and Associates, Inc. shall be without liability to Kimley-Horn and Associates, Inc.



LEGEND:

GEI-101 BORING LOCATION

- NOTES:**
- FIGURE BASED ON FILE TITLED "Lovell Pedestrian-2019-60-SEPT 22-2022_AcAD2010" PROVIDED BY KIMLEY-HORN ON 4/12/2023
 - ELEVATIONS ARE REFERENCED TO TOWN OF WEYMOUTH (T.O.W) DATUM. 6.63 EL. T.O.W. = EL. 0.00 NAVD 88.
 - SEE RESULTS OF SUBSURFACE INVESTIGATIONS AND GEOTECHNICAL RECOMMENDATIONS LOVELL FIELD PEDESTRIAN BRIDGE FOR BORING LOGS AND ANALYSES - APPENDIX A - REF: GEI CONSULTANTS

REFERENCE: SURVEY AND BASE EXISTING CONDITIONS PLAN PREPARED AND PROVIDED BY THE TOWN OF WEYMOUTH.

NOTE: NOT TO SCALE

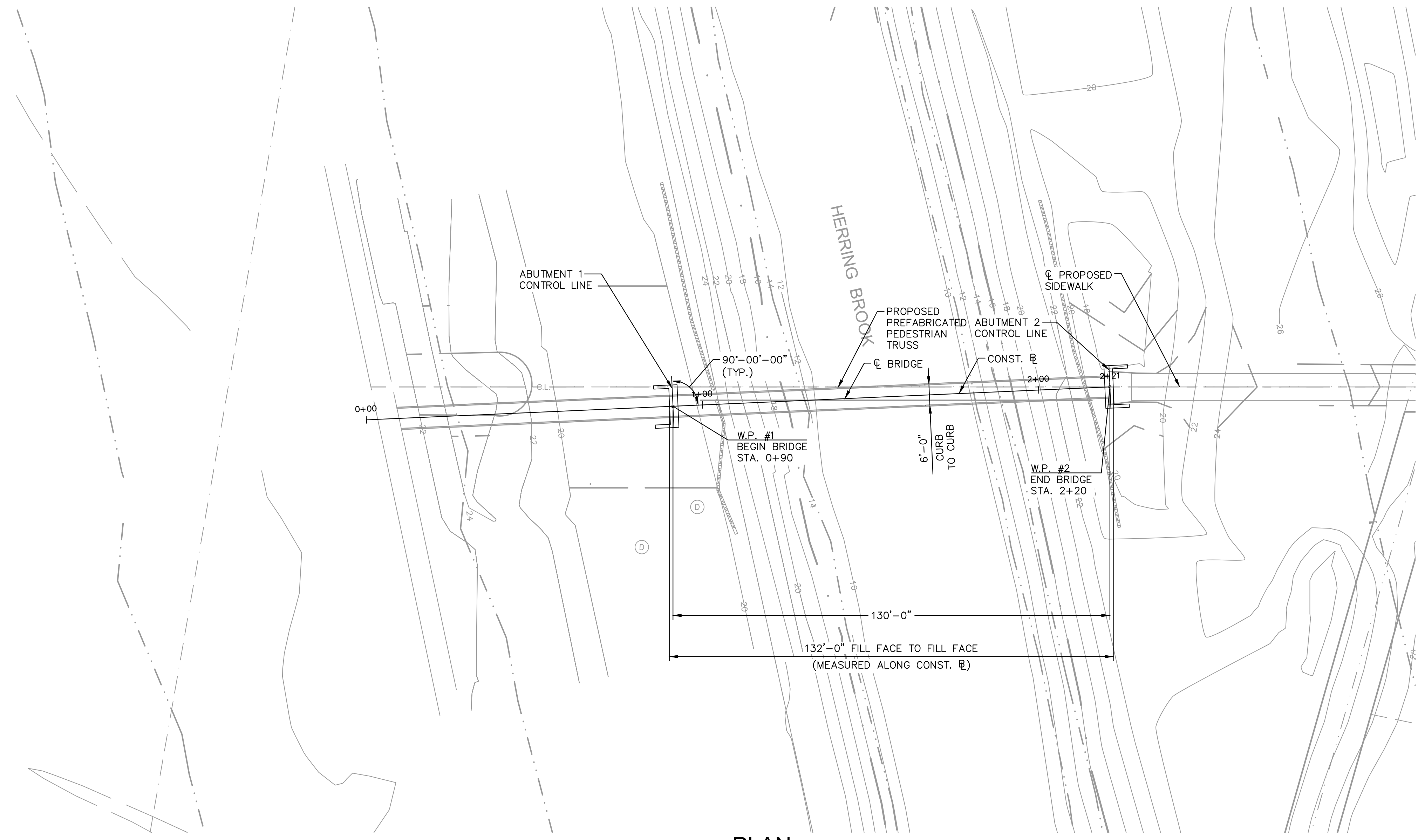
Lovell Field Pedestrian Bridge
 Weymouth, Massachusetts, State

 Kimley-Horn and Associates, Inc.
 Waltham, Massachusetts

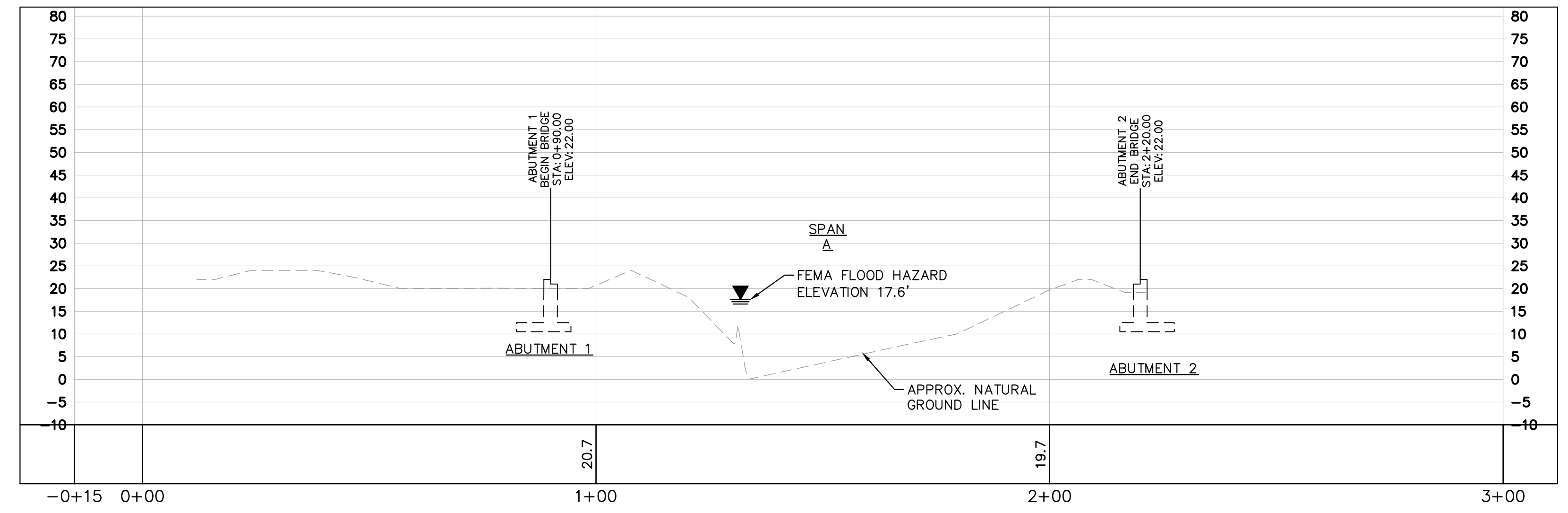
Project 2300649

LOVELL FIELD PEDESTRIAN BRIDGE PROJECT PREPARED FOR TOWN OF WEYMOUTH <small>WEYMOUTH MASSACHUSETTS</small>	SUBSURFACE BORING LOCATIONS		<p style="font-size: 8px;">© 2023 KIMLEY-HORN AND ASSOCIATES, INC. 404 WYMAN STREET, SUITE 385, WALTHAM, MA 02451 PHONE: 781-328-0676 WWW.KIMLEY-HORN.COM</p>
KHA PROJECT 112664003 DATE 12/21/2023 SCALE AS SHOWN DESIGNED BY DRAWN BY CHECKED BY	SHEET NUMBER <p style="text-align: center; font-size: 12px;">7</p>	BOARDWALK REMOVAL REVISIONS No. No. DATE BY	BLOCK 158 LOT 3 MBTA GREENBUSH/ EAST WEYMOUTH STATION #1590 COMMERCIAL STREET BK 16152, PG 66 PLAN BK 492, PG 60 BLOCK 253 LOT 26 WNW OF WEYMOUTH-LOVELL FIELD 894 BROAD STREET BLOCK 253 LOT 35 N/F JOHN P. BELLAS CERT #139476 LCC #19499B & 32616B

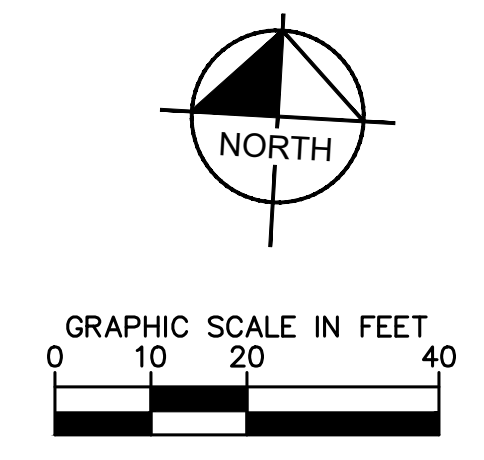
Plotted By: Fabrizio, Joe - Sheet Set: KHA - Layout: P & P - January 31, 2024, 04:00:59pm - K:\BOS - TPT\0112664003 - Weymouth Lovell Field Pedestrian Bridge Design\CAD\PlanSheets\C3.0 Bridge Plan and Profile.dwg
 This document, together with the concepts and designs presented herein, is intended only for the specific purpose and client for which it was prepared. Reuse and improper reliance on this document without written authorization and adaptation by Kimley-Horn and Associates, Inc. shall be without liability to Kimley-Horn and Associates, Inc.



PLAN
 (FOUNDATION DETAILS NOT SHOWN FOR CLARITY)



ELEVATION



No.	REVISIONS	DATE	BY
1	BOARDWALK REMOVAL	12/21/2023	JF

Kimley >>> Horn
 © 2023 KIMLEY-HORN AND ASSOCIATES, INC.
 404 WYMAN STREET, SUITE 385, WALTHAM, MA 02451
 PHONE: 781-388-0676
 WWW.KIMLEY-HORN.COM

Professional Engineer Seal for Seth A. Denney, No. 58687, State of Massachusetts.

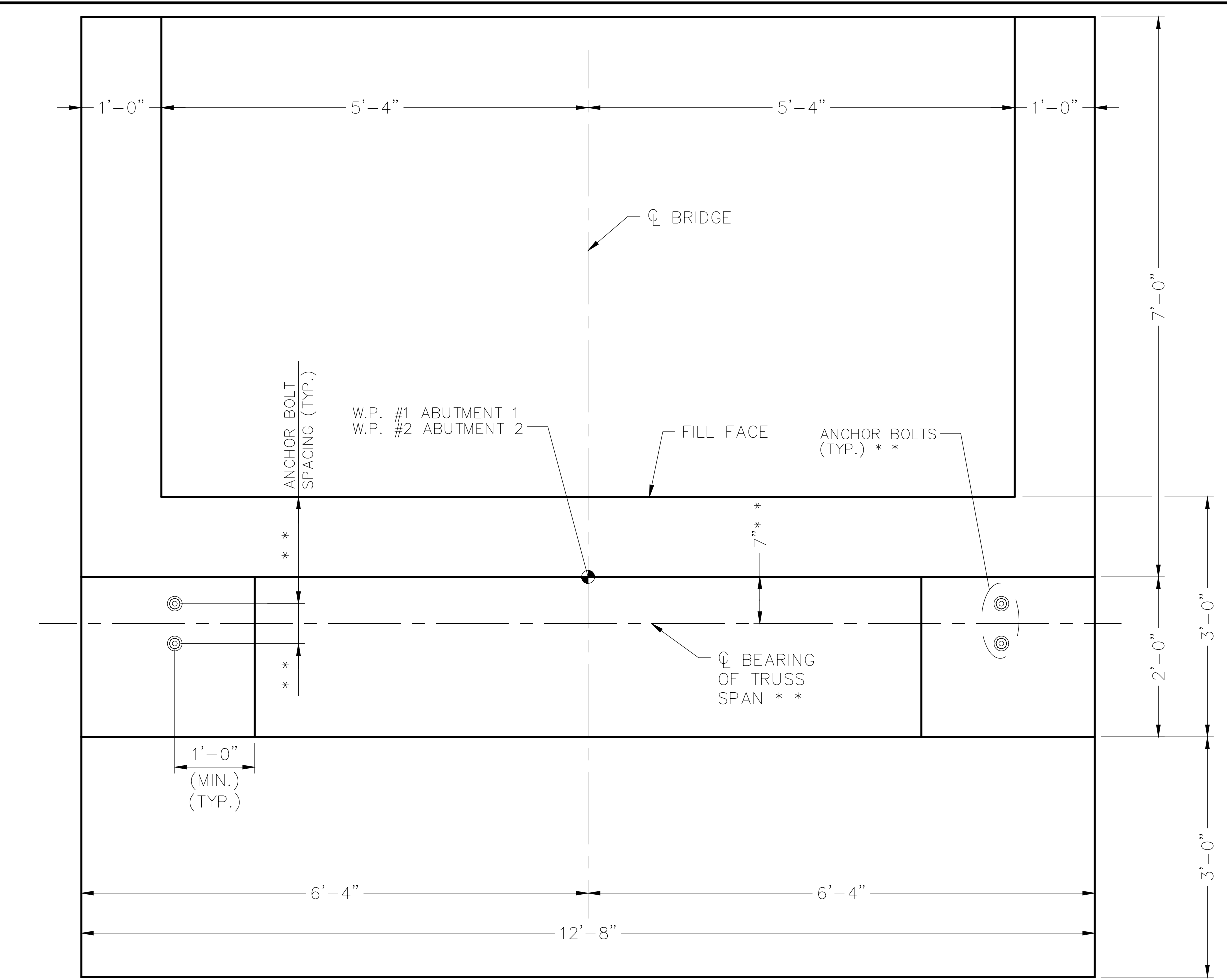
KHA PROJECT	112664003
DATE	12/21/2023
SCALE	AS SHOWN
DESIGNED BY	BMK
DRAWN BY	JIK
CHECKED BY	SAD

BRIDGE PROFILE

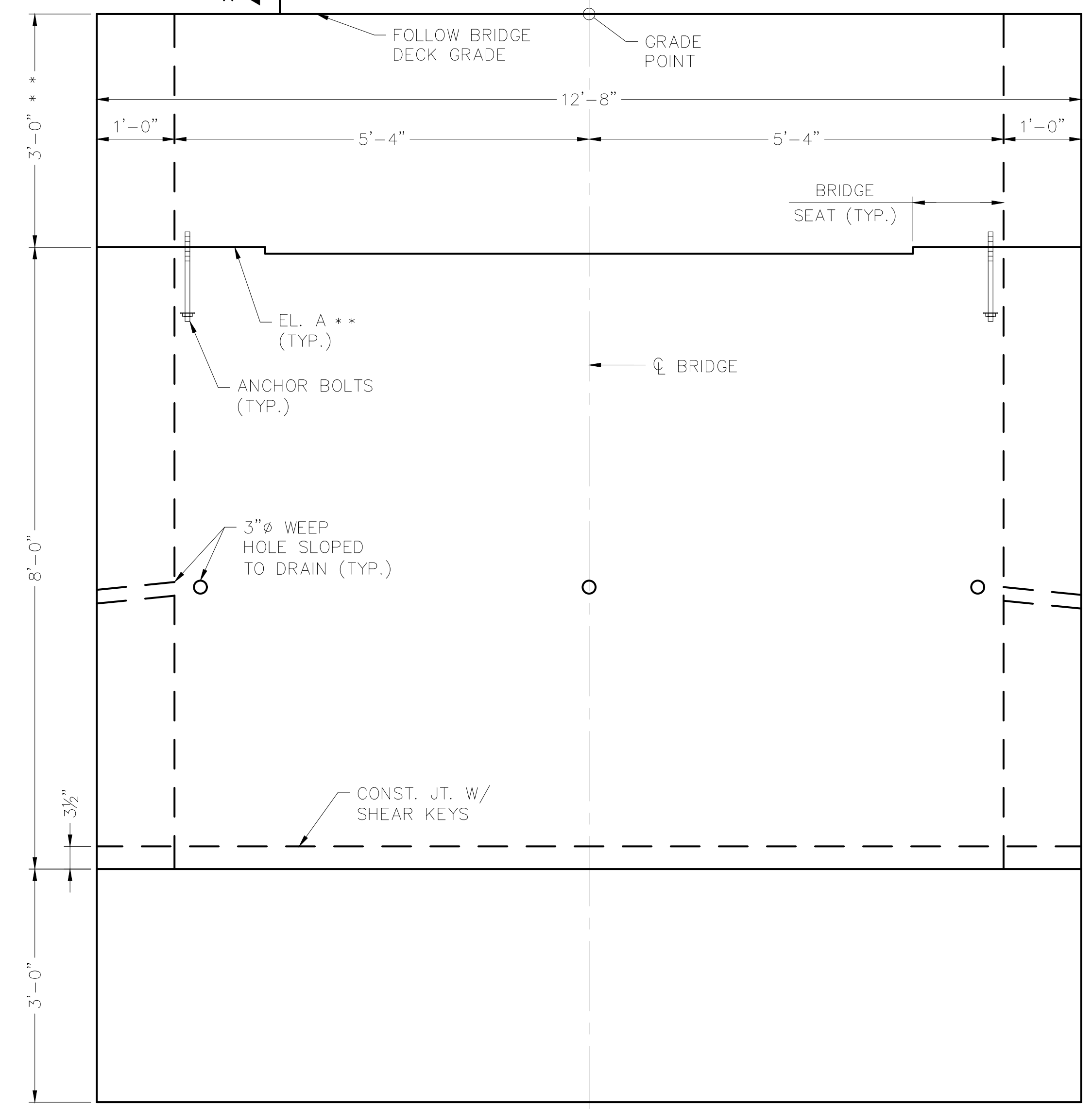
LOVELL FIELD PEDESTRIAN BRIDGE PROJECT
 PREPARED FOR
TOWN OF WEYMOUTH
 WEYMOUTH MASSACHUSETTS

REFERENCE: SURVEY AND BASE EXISTING CONDITIONS PLAN PREPARED AND PROVIDED BY THE TOWN OF WEYMOUTH.

Plotted By: Fabrizio, Joe - Sheet Set: KHA - Layout: 11 BRIDGE DETAILS - January 31, 2024, 04:01:18pm - K:\BOS - TPT\0112664003 - Weymouth Lovell Field Pedestrian Bridge Design\CAD\PlanSheets\C11.0 Bridge Details.dwg
 This document, together with the concepts and designs presented herein, as an instrument of service, is intended only for the specific purpose and client for which it was prepared. Reuse of and improper reliance on this document without written authorization and adaptation by Kimley-Horn and Associates, Inc. shall be without liability to Kimley-Horn and Associates, Inc.



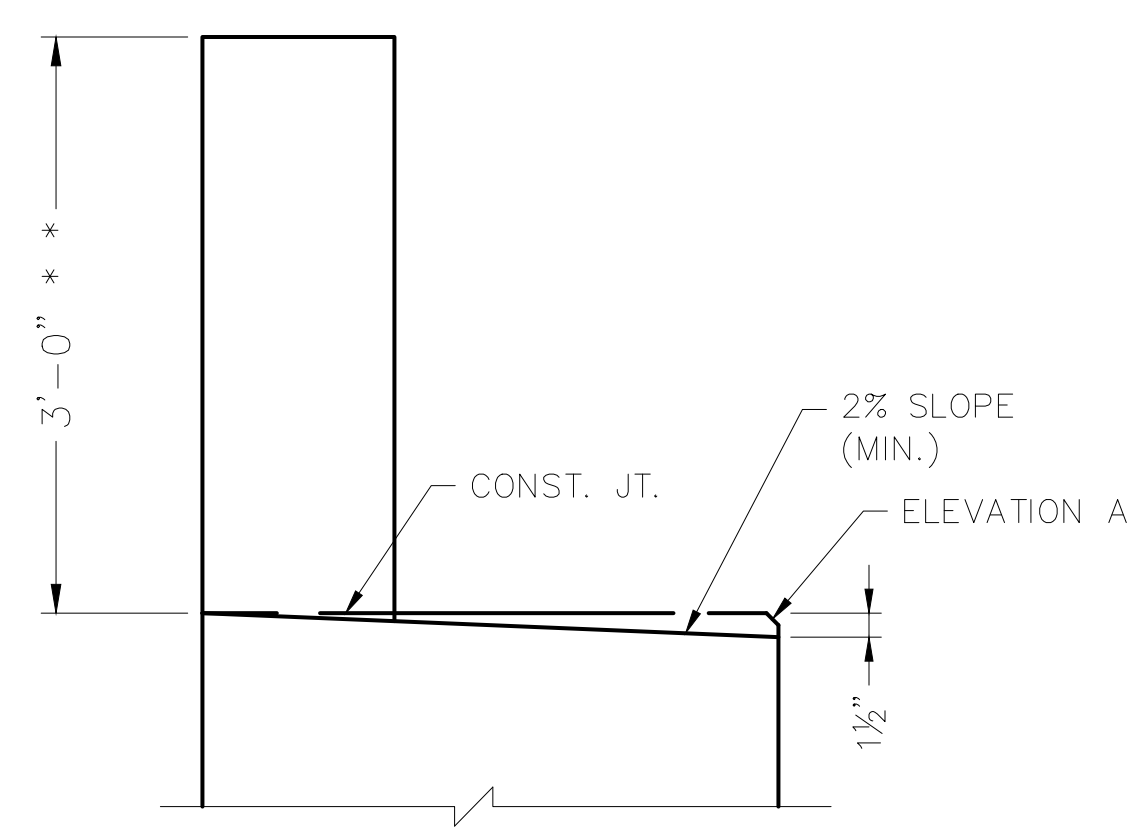
BRIDGE ABUTMENT PLAN
 ABUTMENT 1 SHOWN, ABUTMENT 2 SIMILAR



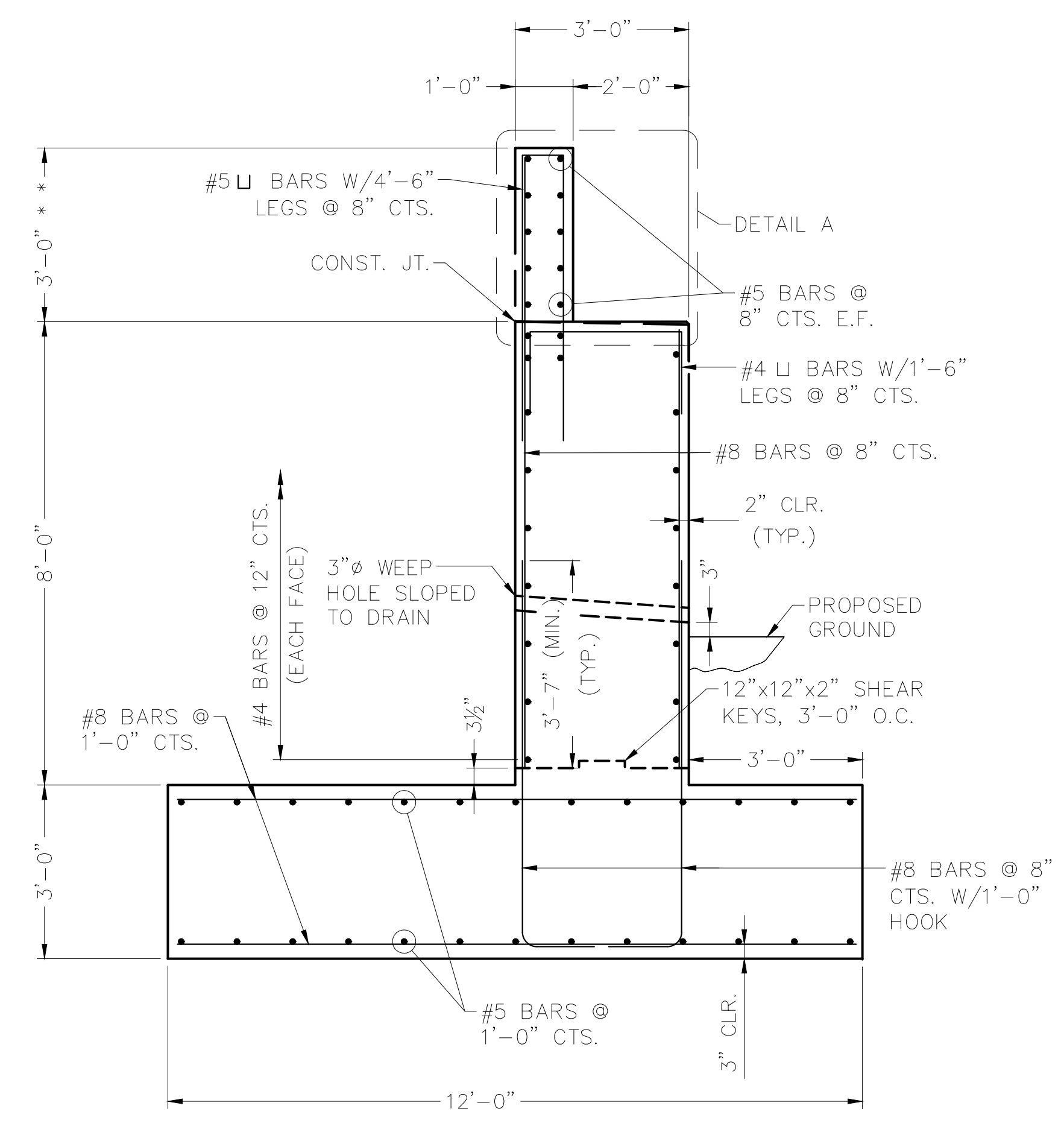
BRIDGE ABUTMENT ELEVATION

NOTES

** REFER TO PREFABRICATED PEDESTRIAN BRIDGE PLANS (BY OTHERS) FOR ANCHOR BOLT PLACEMENT, MINIMUM EMBEDMENT, DETAILS, AND FOR DIMENSIONS NOT SHOWN.



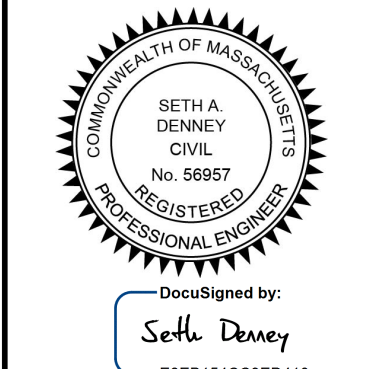
DETAIL A



SECTION A-A

No.	REVISIONS	DATE	BY
1	BOARDWALK REMOVAL	12/21/2023	JF

Kimley >>> Horn
 © 2023 KIMLEY-HORN AND ASSOCIATES, INC.
 404 WYMAN STREET, SUITE 385, WALTHAM, MA 02451
 PHONE: 781-328-0676
 WWW.KIMLEY-HORN.COM



KHA PROJECT	112664003
DATE	12/21/2023
SCALE	AS SHOWN
DESIGNED BY	BMK
DRAWN BY	JIK
CHECKED BY	SAD

BRIDGE DETAILS

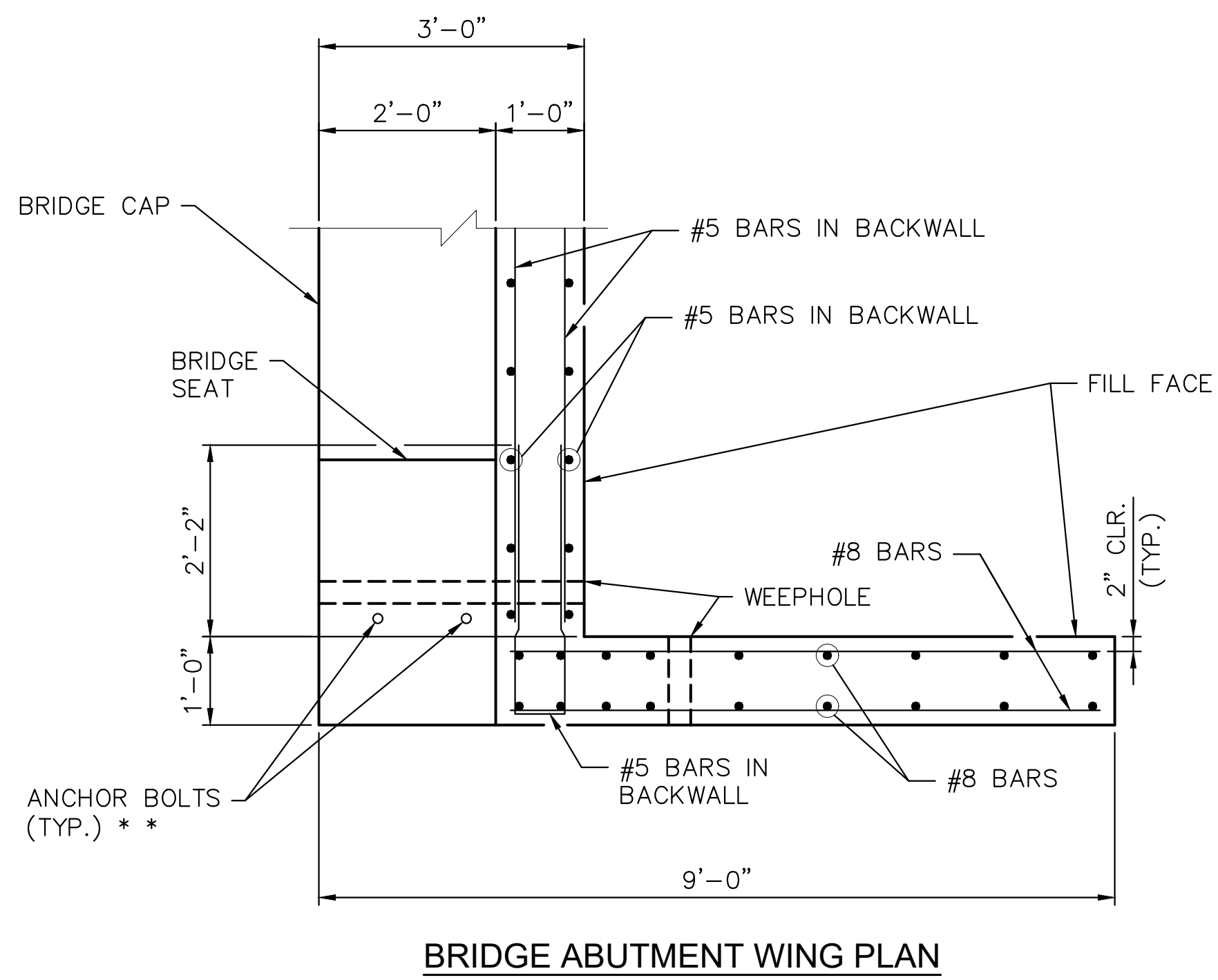
LOVELL FIELD PEDESTRIAN BRIDGE PROJECT
 PREPARED FOR
TOWN OF WEYMOUTH
 WEYMOUTH MASSACHUSETTS

NOTES

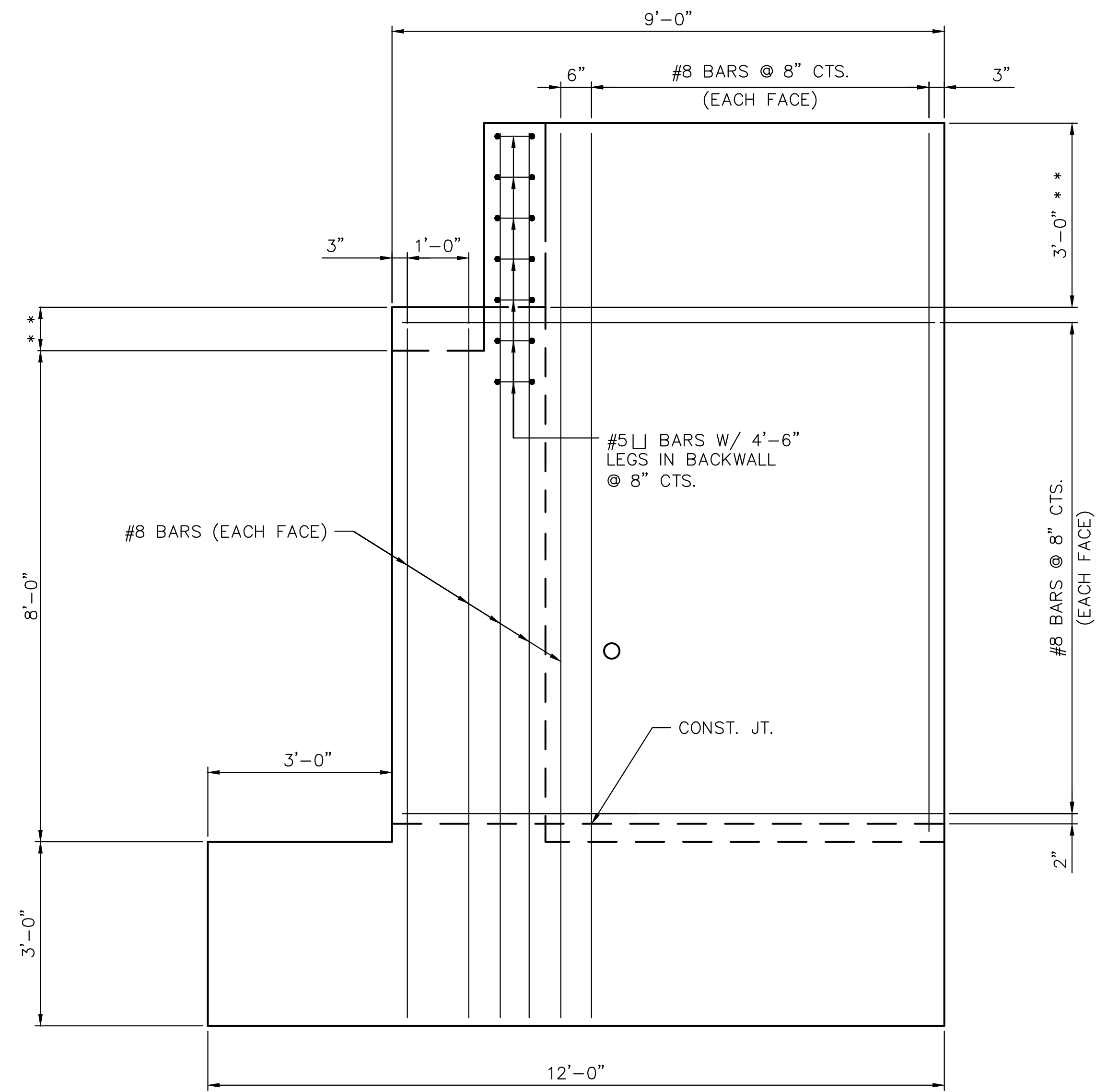
** REFER TO PREFABRICATED PEDESTRIAN BRIDGE (BY OTHERS) FOR ANCHOR BOLT PLACEMENT AND DETAILS, AND FOR DIMENSIONS NOT SHOWN OR REQUIRING VERIFICATION BY THE PREFABRICATED BRIDGE ENGINEER.

CONTRACTOR MUST UPDATE DIMENSIONS BASED ON ACTUAL INFORMATION PROVIDED BY THE PEDESTRIAN BRIDGE FABRICATOR.

ADHESIVE ANCHOR SYSTEM SHALL HAVE A MINIMUM PULLOUT STRENGTH (ALLOWABLE) OF 10 KIPS. THE ADHESIVE ANCHOR SYSTEM SHALL BE CHOSEN FROM THOSE ON THE MASSDOT APPROVED PRODUCTS LIST.



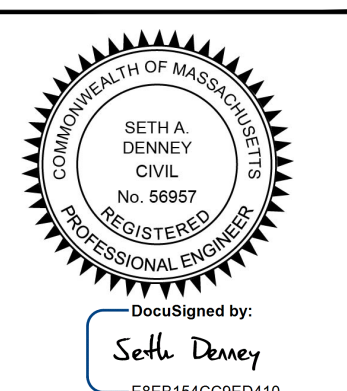
BRIDGE ABUTMENT WING PLAN



BRIDGE ABUTMENT WING ELEVATION

NOTE:
ABUTMENT REINFORCING NOT SHOWN FOR CLARITY.

Plotted By: Fabrizio, Joe Sheet Set: KHA Layout: 12 BOM January 31, 2024 04:01:24pm K:\BOS_TPT\0112664003_Weymouth_Lovell Field Pedestrian Bridge Design\CAD\PlanSheets\C-12.0 Bill of Material.dwg
 This document, together with the concepts and designs presented herein, as an instrument of service, is intended only for the specific purpose and client for which it was prepared. Reuse of and improper reliance on this document without written authorization and adaptation by Kimley-Horn and Associates, Inc. shall be without liability to Kimley-Horn and Associates, Inc.



KHA PROJECT	112664003
DATE	12/21/2023
SCALE	AS SHOWN
DESIGNED BY	BMK
DRAWN BY	JIK
CHECKED BY	SAD

MISC. BRIDGE DETAILS

LOVELL FIELD PEDESTRIAN BRIDGE PROJECT
 PREPARED FOR
TOWN OF WEYMOUTH
 WEYMOUTH MASSACHUSETTS

No.	REVISIONS	DATE	BY
1	BOARDWALK REMOVAL	12/21/2023	JF

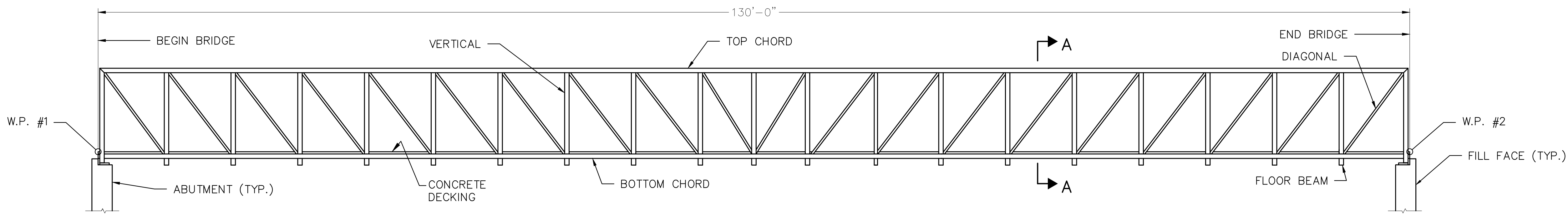
Plotted By: Fabrizio, Joe - Sheet Set: KHA - Layout: 15 - January 31, 2024, 04:01:34pm - K:\BOS - TPT\112664003 - Weymouth - Lovell Field Pedestrian Bridge Design\CAD\PlanSheets\15.0 Prefab Truss Superstructure.dwg
 This document, together with the concepts and designs presented herein, is an instrument of service, is intended only for the specific purpose and client for which it was prepared. Reuse and improper reliance on this document without written authorization and adaptation by Kimley-Horn and Associates, Inc. shall be without liability to Kimley-Horn and Associates, Inc.

NOTES

PREFABRICATED PEDESTRIAN BRIDGE DETAILS SHOWN FOR AESTHETIC REQUIREMENT ONLY AND MINIMUM LAYOUT REQUIREMENTS. CONTRACTOR'S ENGINEER SHALL BE RESPONSIBLE FOR THE DESIGN AND DETAILING OF THE PREFABRICATED TRUSS SUPERSTRUCTURE.

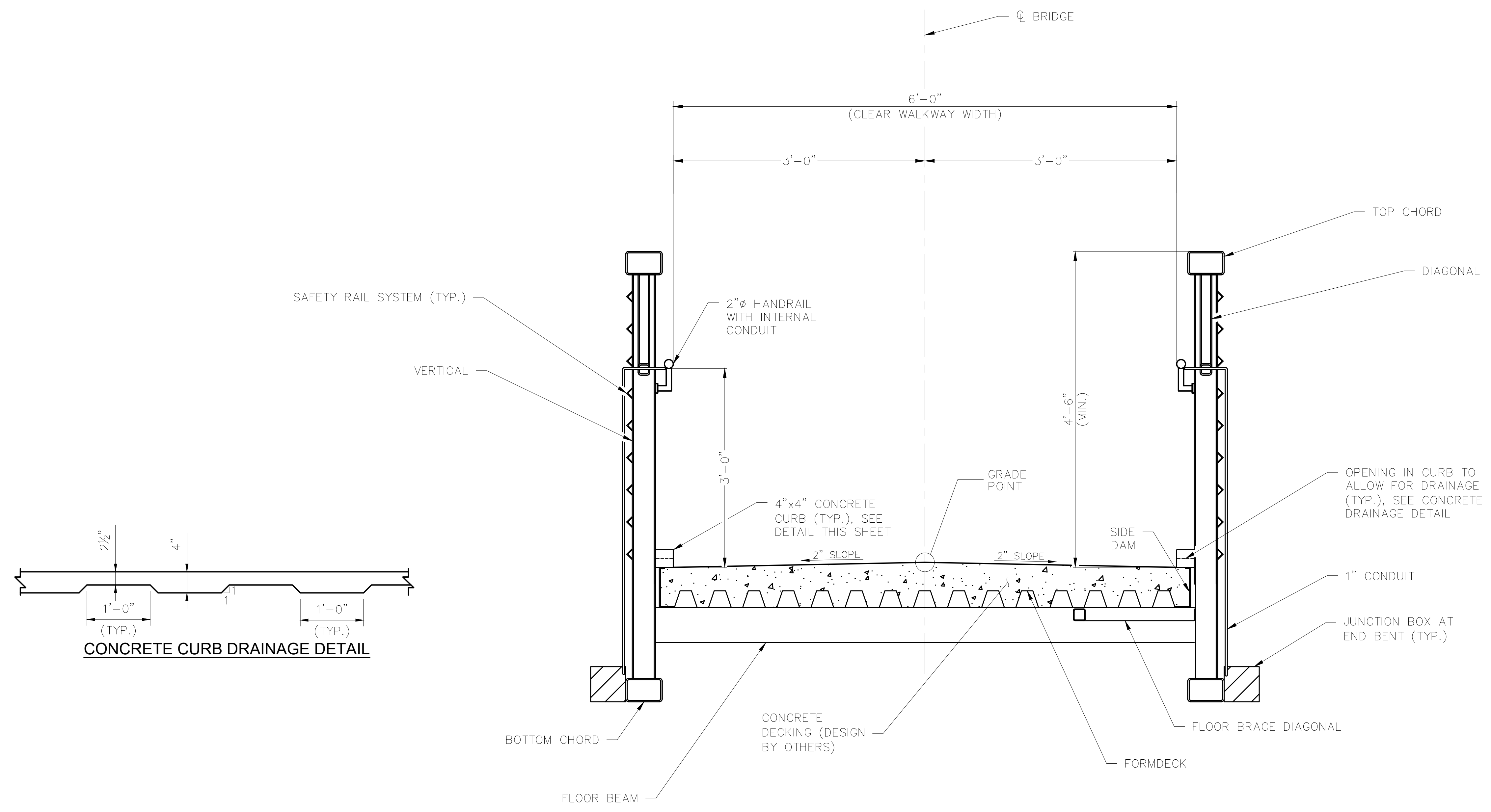
DETAILS SHOWN ARE CONCEPTUAL AND SUBJECT TO CHANGE BASED ON DESIGN FROM THE CONTRACTOR'S ENGINEER.

FOR DETAILS OF JUNCTION BOXES, CONDUITS, AND ELECTRICAL COMPONENTS, SEE ELECTRICAL PLANS.



PREFABRICATED PEDESTRIAN BRIDGE ELEVATION

NOTE:
SAFETY RAIL, TOE PLATE, RUB RAIL AND ANCHOR BOLTS NOT SHOWN FOR CLARITY.

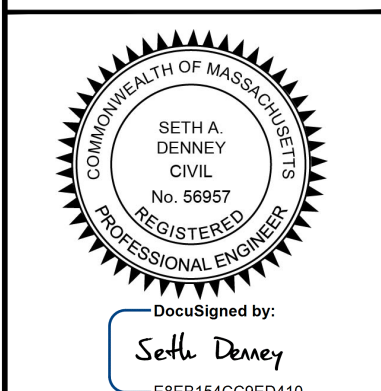


SECTION A-A

No.	REVISIONS	DATE	BY
1	BOARDWALK REMOVAL	12/21/2023	JF

Kimley >>> Horn

© 2023 KIMLEY-HORN AND ASSOCIATES, INC.
404 WYMAN STREET, SUITE 305, WALTHAM, MA 02451
PHONE: 781-328-0676
WWW.KIMLEY-HORN.COM

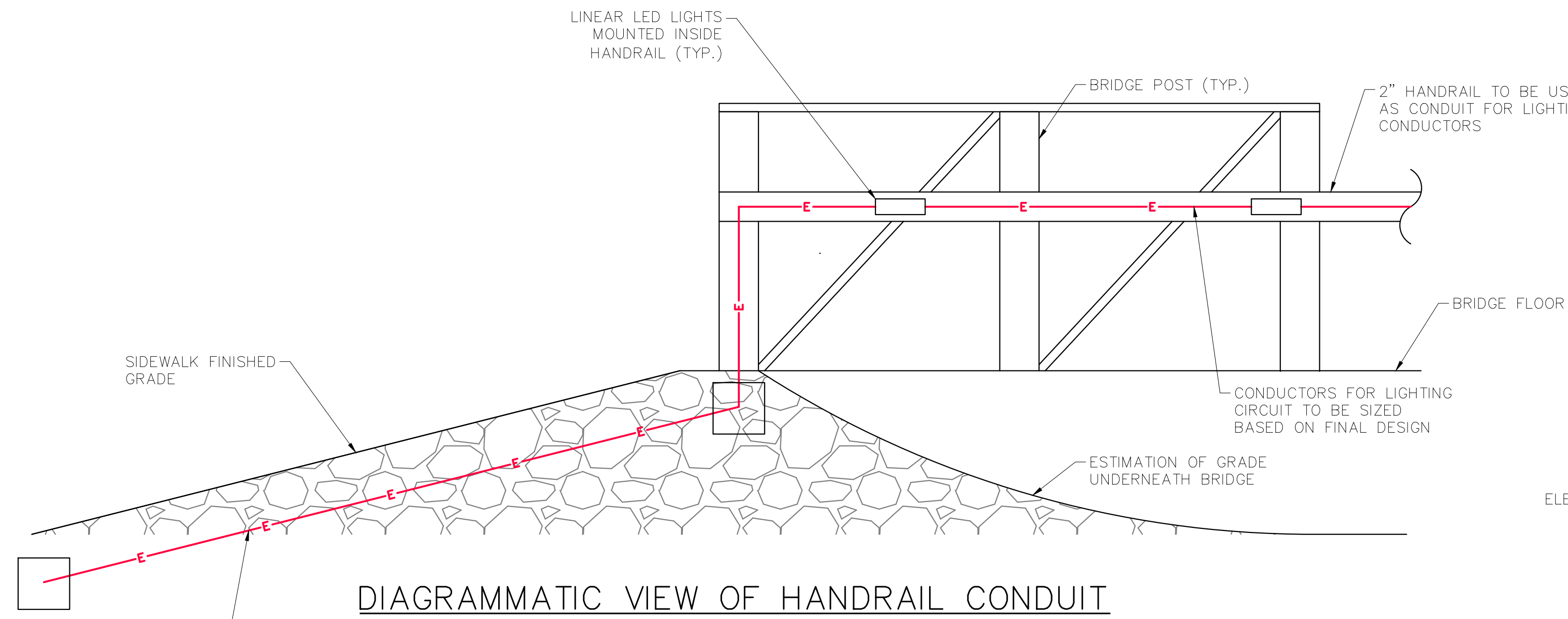


KHA PROJECT	112664003
DATE	12/21/2023
SCALE	AS SHOWN
DESIGNED BY	BMK
DRAWN BY	JIK
CHECKED BY	SAD

PREFAB TRUSS SUPERSTRUCTURE

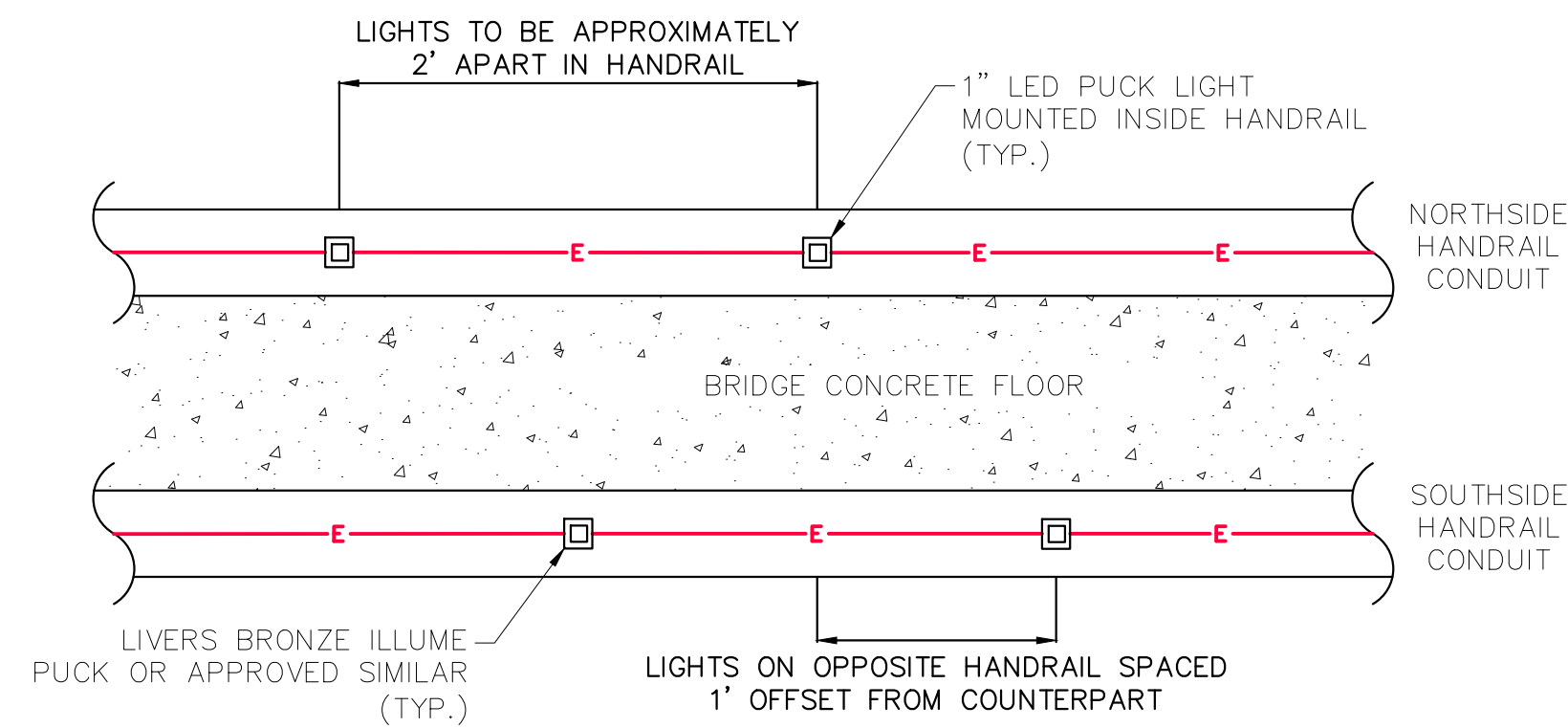
LOVELL FIELD PEDESTRIAN BRIDGE PROJECT
PREPARED FOR
TOWN OF WEYMOUTH
WEYMOUTH MASSACHUSETTS

Plotted By: Fabrizio, Joe - Sheet Set: KHA - Layout: 16 - January 31, 2024, 04:01:41pm - K:\BOS - TPT\112664003 - Weymouth - Lovell Field Pedestrian Bridge Design\CAD\PlanSheets\16.0 Electrical Bridge Details.dwg
 This document, together with the concepts and designs presented herein, is intended only for the specific purpose and client for which it was prepared. Reuse and improper reliance on this document without written authorization and adaptation by Kimley-Horn and Associates, Inc. shall be without liability to Kimley-Horn and Associates, Inc.

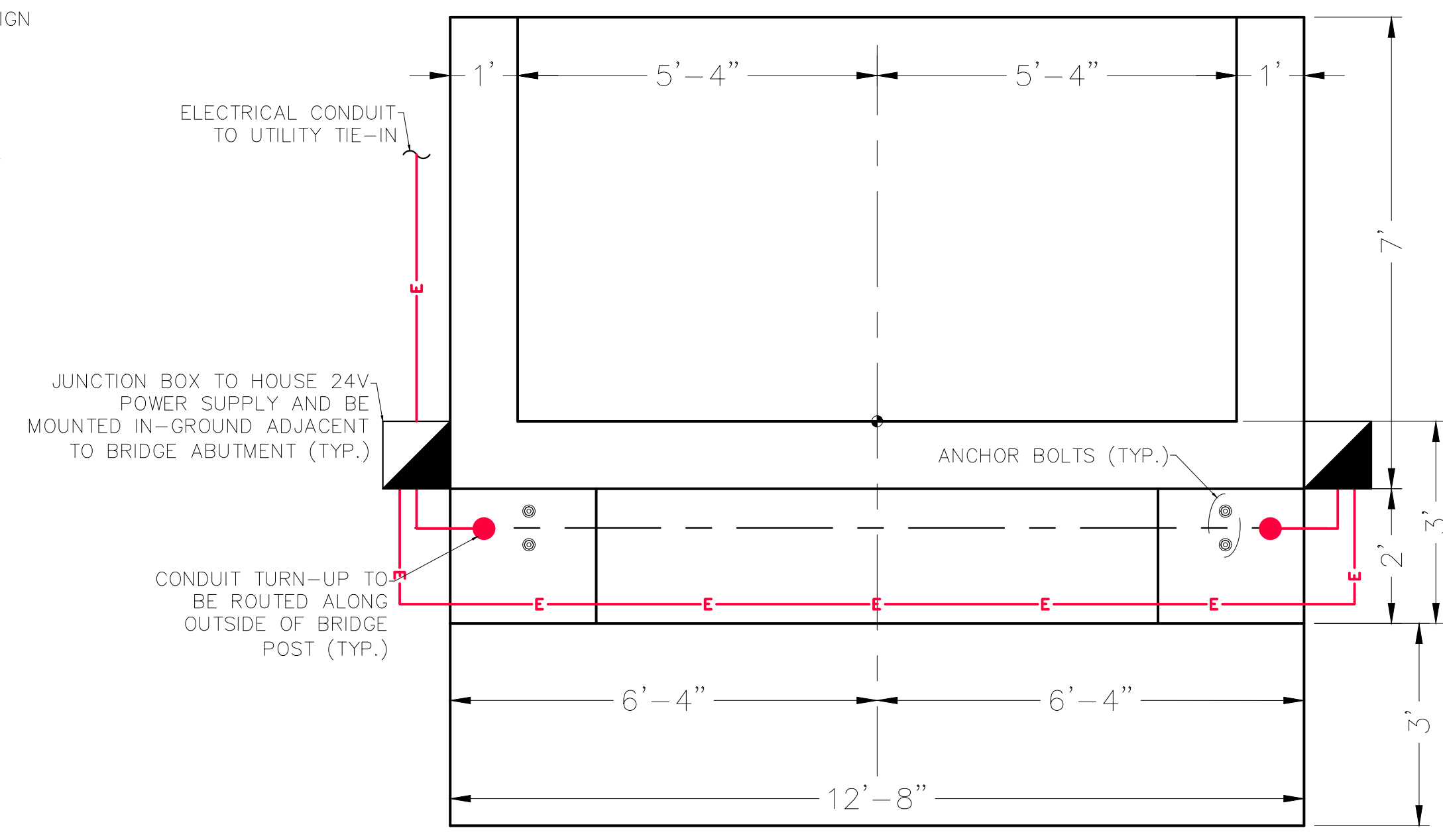


PROP. CONDUIT TO END OF PROJECT, NORTH SIDE ONLY

DIAGRAMMATIC VIEW OF HANDRAIL CONDUIT



TOP-DOWN INTERIOR CONDUIT ROUTING DETAIL



CONDUIT TO HANDRAIL TRANSITION DETAIL

SAME TRANSITION ON BOTH SIDES OF BRIDGE

NOTE: CABLE TO BE INSTALLED IN FUTURE BY OTHERS. LIGHT FIXTURES TO BE INSTALLED IN FUTURE BY OTHERS.

No.	REVISIONS	DATE	BY
1	BOARDWALK REMOVAL	12/21/2023	JF

Kimley >>> Horn
 © 2023 KIMLEY-HORN AND ASSOCIATES, INC.
 404 WYMAN STREET, SUITE 385, WALTHAM, MA 02451
 PHONE: 781-328-0676
 WWW.KIMLEY-HORN.COM

Professional Seal:
 COMMONWEALTH OF MASSACHUSETTS
 SETH A. DENNEY
 CIVIL ENGINEER
 No. 58667
 REGISTERED PROFESSIONAL ENGINEER

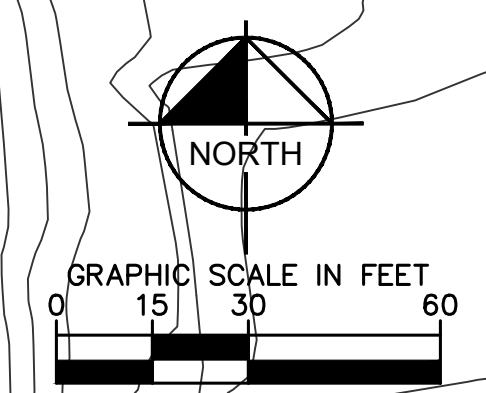
Designed by: *Seth Denney*

KHA PROJECT	112664003
DATE	12/21/2023
SCALE	AS SHOWN
DESIGNED BY	BMKY
DRAWN BY	JIK
CHECKED BY	SAD

BRIDGE ELECTRICAL DETAILS

LOVELL FIELD PEDESTRIAN BRIDGE PROJECT
 PREPARED FOR TOWN OF WEYMOUTH
 WEYMOUTH MASSACHUSETTS

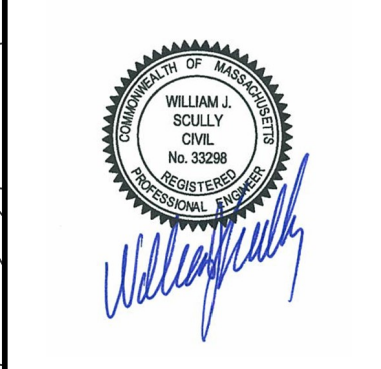
Plotted By: Fabrizio, Joe - Sheet Set: KHA - Layout: 20 EROSION CONTROL - January 31, 2024, 04:01:51pm - K:\BDS - TPT\0112664003 - Weymouth Lovell Field Pedestrian Bridge Design\CAD\PlanSheets\C-20 Erosion Control.dwg
 This document, together with the concepts and designs presented herein, is intended only for the specific project and design presented herein, as an instrument of service, and is not to be used for any other project or design without the written authorization and adaptation by Kimley-Horn and Associates, Inc. shall be without liability to Kimley-Horn and Associates, Inc.



No.	REVISIONS	DATE	BY
1	BOARDWALK REMOVAL	12/21/2023	JF

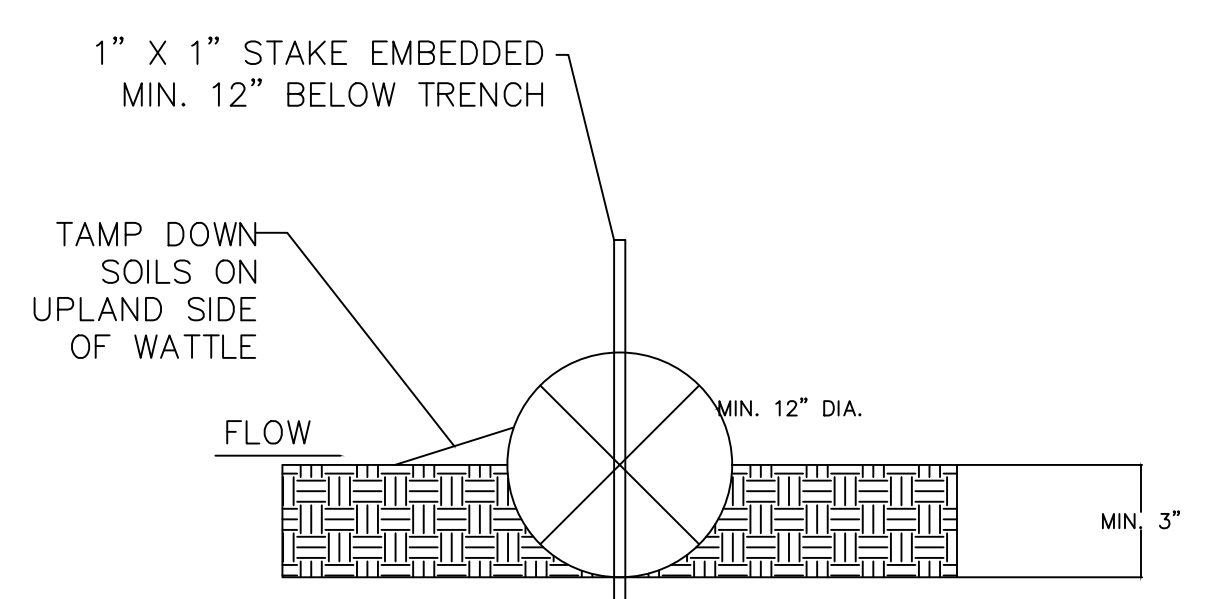
Kimley >>> Horn

© 2023 KIMLEY-HORN AND ASSOCIATES, INC.
 404 WYMAN STREET, SUITE 385, WALTHAM, MA 02451
 PHONE: 781-328-0676
 WWW.KIMLEY-HORN.COM



KHA PROJECT	112664003
DATE	12/21/2023
SCALE	AS SHOWN
DESIGNED BY	
DRAWN BY	
CHECKED BY	

EROSION CONTROL



STRAW WATTLE DETAIL

SCALE: NTS

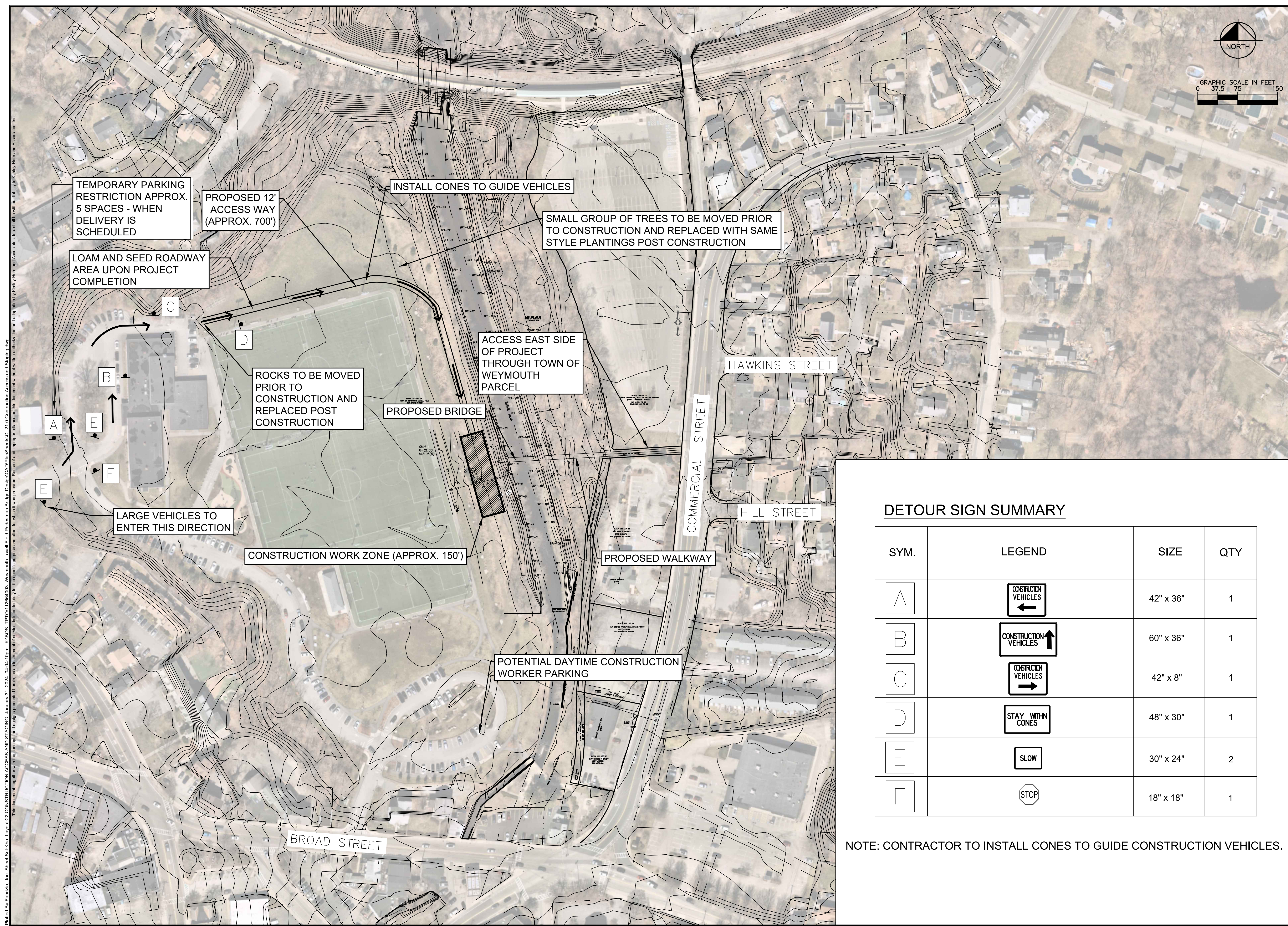
- NOTES:**
1. WATTLES SHALL BE FILLED WITH STRAW OR COMPOST.
 2. WATTLES SHALL BE INSTALLED IN LOCATIONS AS SHOWN ON SHEET C-2.
 3. SPACE STAKES 4'0" APART MAX.
 4. WATTLES SHALL BE MAINTAINED THROUGHOUT CONSTRUCTION. TRENCHES SHALL BE DRESSED WITH LOAM AND SEEDS AFTER REMOVAL OF WATTLES.

REFERENCE: SURVEY AND BASE EXISTING CONDITIONS PLAN PREPARED AND PROVIDED BY THE TOWN OF WEYMOUTH.

LOVELL FIELD PEDESTRIAN BRIDGE PROJECT
 PREPARED FOR
TOWN OF WEYMOUTH

WEYMOUTH MASSACHUSETTS

SHEET NUMBER
14



TEMPORARY PARKING RESTRICTION APPROX. 5 SPACES - WHEN DELIVERY IS SCHEDULED

PROPOSED 12' ACCESS WAY (APPROX. 700')

INSTALL CONES TO GUIDE VEHICLES

SMALL GROUP OF TREES TO BE MOVED PRIOR TO CONSTRUCTION AND REPLACED WITH SAME STYLE PLANTINGS POST CONSTRUCTION

LOAM AND SEED ROADWAY AREA UPON PROJECT COMPLETION

ACCESS EAST SIDE OF PROJECT THROUGH TOWN OF WEYMOUTH PARCEL

ROCKS TO BE MOVED PRIOR TO CONSTRUCTION AND REPLACED POST CONSTRUCTION

PROPOSED BRIDGE

HAWKINS STREET

LARGE VEHICLES TO ENTER THIS DIRECTION

CONSTRUCTION WORK ZONE (APPROX. 150')

PROPOSED WALKWAY

HILL STREET

POTENTIAL DAYTIME CONSTRUCTION WORKER PARKING

BROAD STREET

COMMERCIAL STREET

DETOUR SIGN SUMMARY

SYM.	LEGEND	SIZE	QTY
A	CONSTRUCTION VEHICLES ←	42" x 36"	1
B	CONSTRUCTION VEHICLES ↑	60" x 36"	1
C	CONSTRUCTION VEHICLES →	42" x 8"	1
D	STAY WITHIN CONES	48" x 30"	1
E	SLOW	30" x 24"	2
F	STOP	18" x 18"	1

NOTE: CONTRACTOR TO INSTALL CONES TO GUIDE CONSTRUCTION VEHICLES.

Plotted By: Fabrizio, Joe - Sheet Set: KIM - Layout: 22 CONSTRUCTION ACCESS AND STAGING - January 31, 2024, 04:04:10pm - K:\BOS - TPT\0112664003 - Weymouth, Lovell Field Pedestrian Bridge Design\CAD\PlanSheets\C-21.0 Construction Access and Staging.dwg
 This document, together with the conceptual and design presented herein, are instruments of service, prepared only for the specific purpose and client for which it was prepared. Release of this document without written authorization and adaptation by Kimley-Horn and Associates, Inc. shall be without liability to Kimley-Horn and Associates, Inc.

No.	REVISIONS	DATE	BY
	BOARDWALK REMOVAL	12/21/2023	JF

Kimley >>> Horn
 © 2023 KIMLEY-HORN AND ASSOCIATES, INC.
 404 WYMAN STREET, SUITE 385, WALTHAM, MA 02451
 PHONE: 781-328-0676
 WWW.KIMLEY-HORN.COM



KHA PROJECT	112664003
DATE	12/21/2023
SCALE	AS SHOWN
DESIGNED BY	
DRAWN BY	
CHECKED BY	

CONSTRUCTION ACCESS AND STAGING

LOVELL FIELD PEDESTRIAN BRIDGE PROJECT
 PREPARED FOR
 TOWN OF WEYMOUTH
 WEYMOUTH MASSACHUSETTS