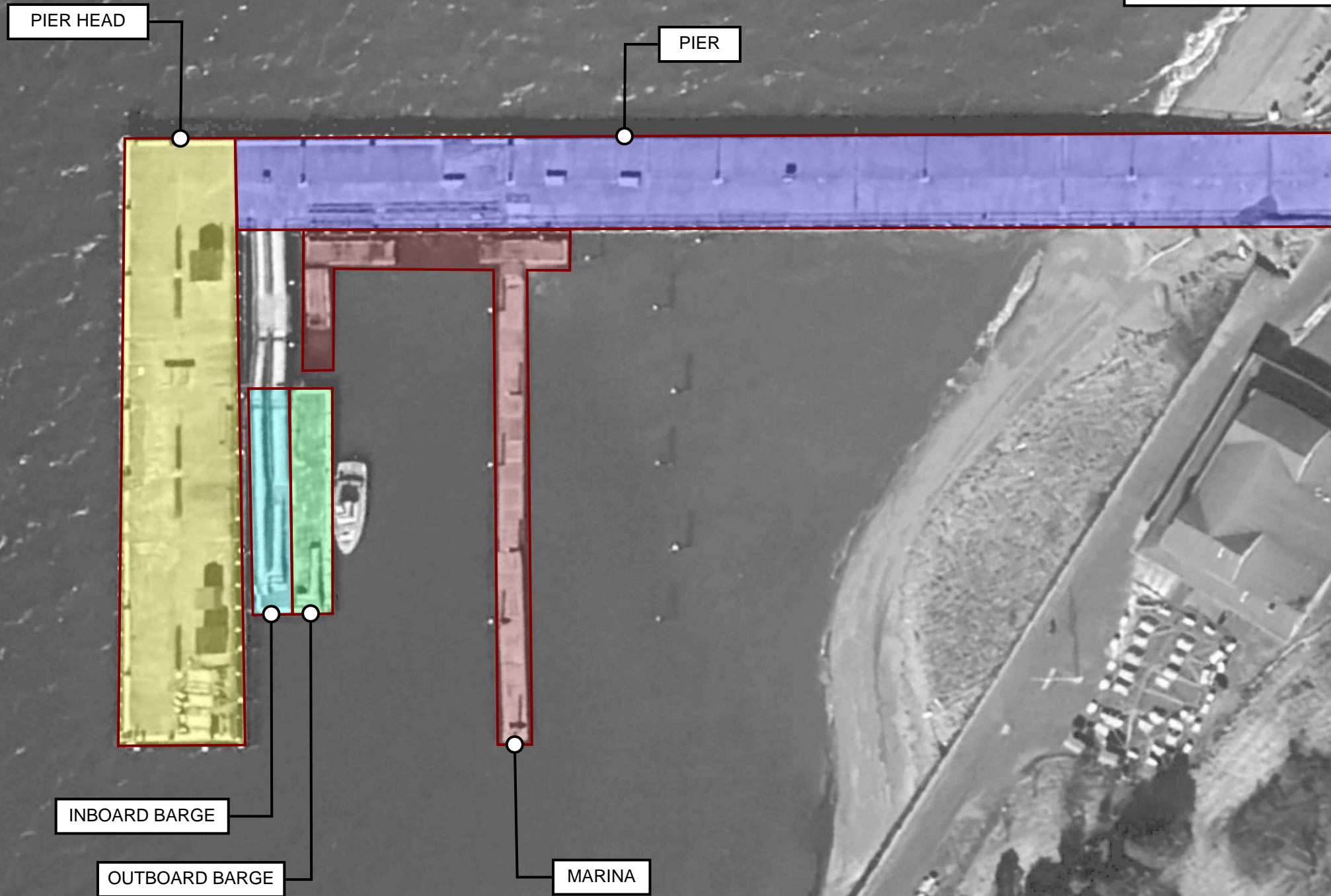


SPECTACLE ISLAND FERRY LANDING EMERGENCY REPAIRS

EXISTING SITE

NOTES:

1. 2024 BASE IMAGE DOWNLOADED FROM GOOGLE EARTH PRO ON MARCH 30, 2024.



**SPECTACLE ISLAND FERRY LANDING EMERGENCY REPAIRS
EXISTING SITE PHOTOGRAPHS**

NOTES:
1. 2024 BASE IMAGE DOWNLOADED FROM GOOGLE EARTH PRO
ON MARCH 30, 2024.



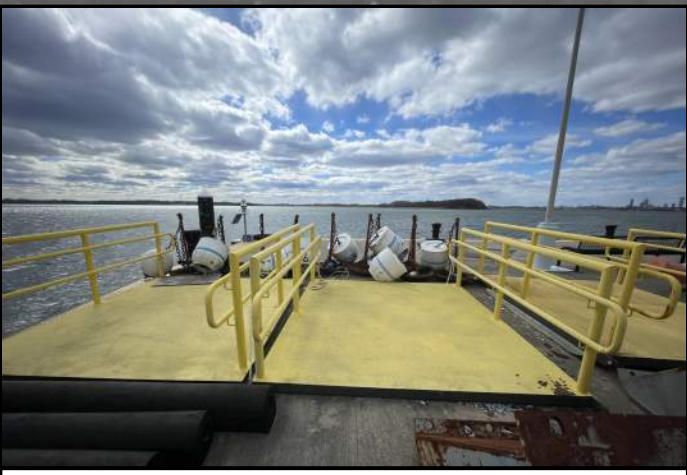
OUTBOARD BARGE



10' x 40' STEEL FLOAT



BARGE APPURTENANCES



BARGE APPURTENANCES



10' x 218' CONCRETE FLOAT

FULL BREAK

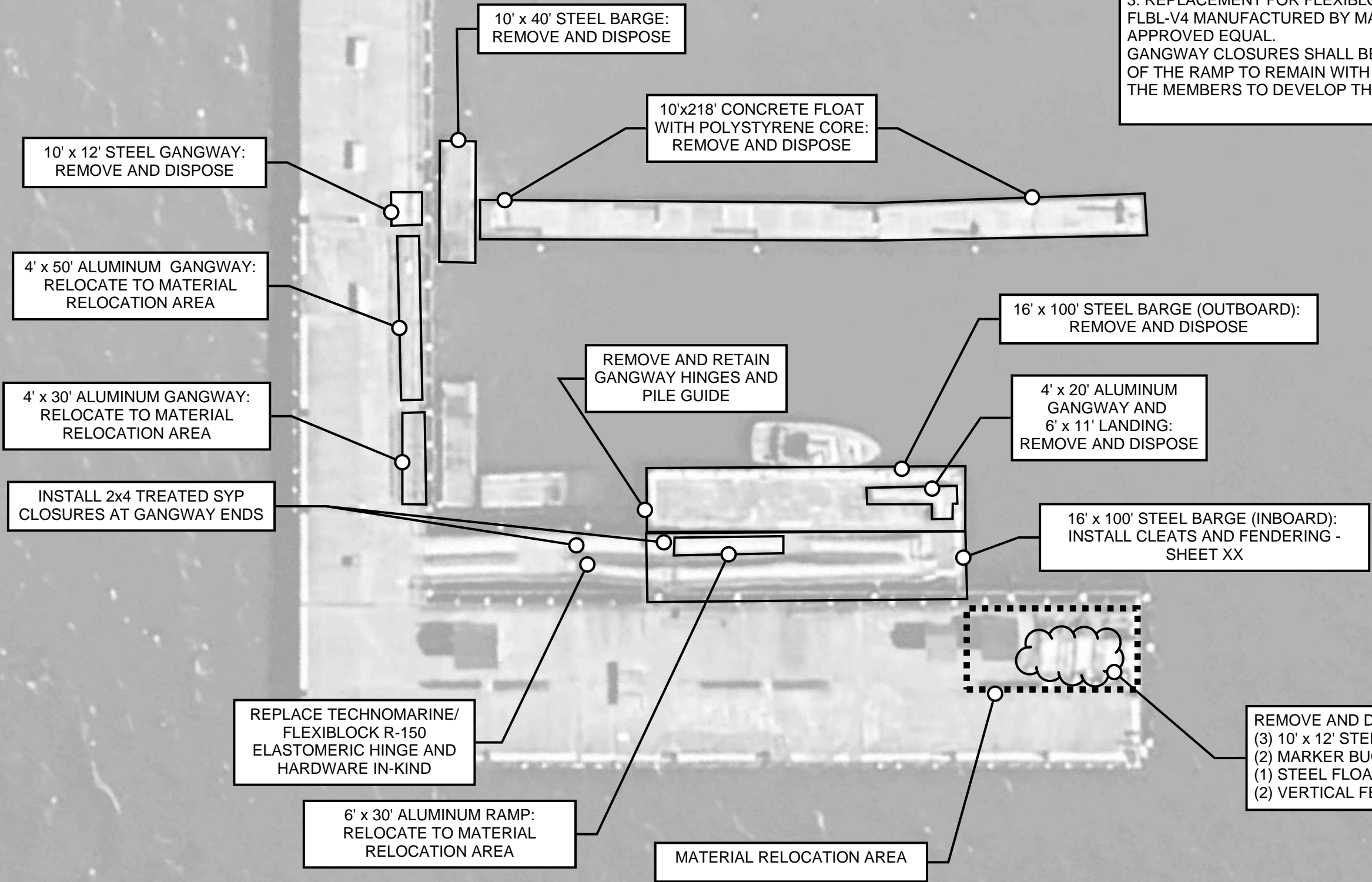


200 ft



SPECTACLE ISLAND FERRY LANDING EMERGENCY REPAIRS ANTICIPATED WORK

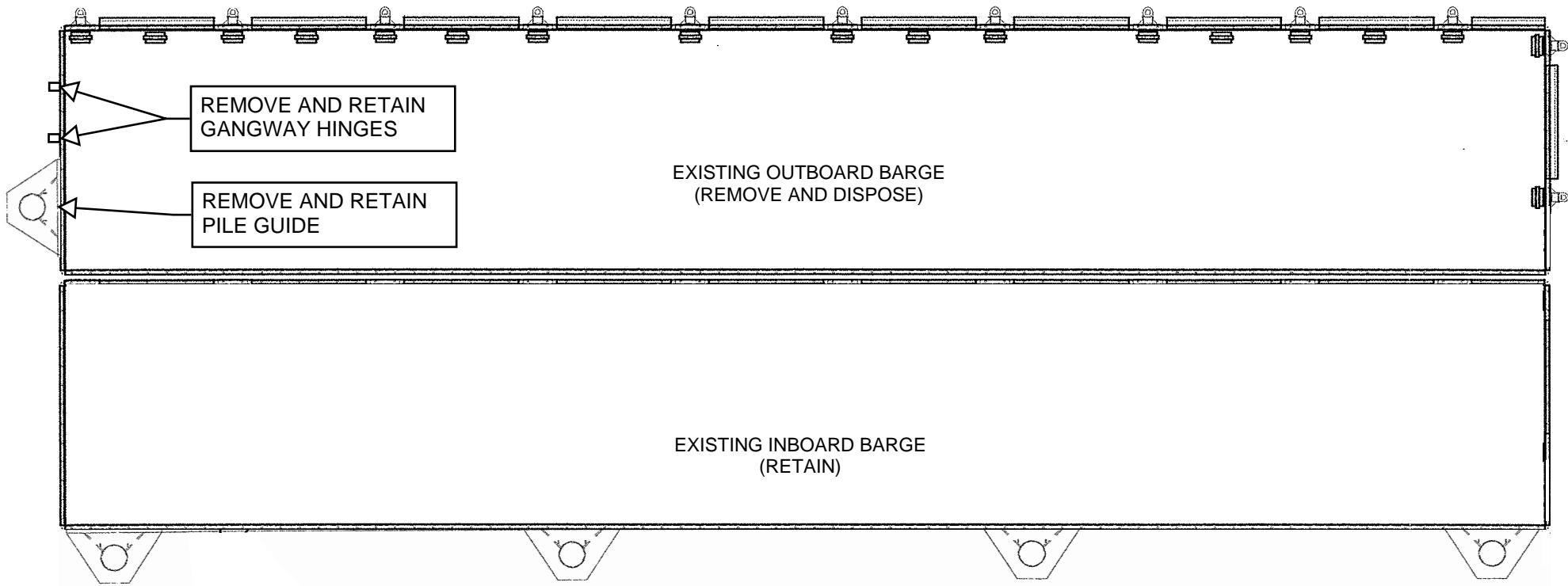
NOTES:
 1. ALL DRAWINGS ARE SCHEMATIC AND DIMENSIONS SHOULD BE FIELD VERIFIED BY THE CONTRACTOR PRIOR TO BIDDING.
 2. PILES SHALL NOT BE ALTERED OR REMOVED.
 3. REPLACEMENT FOR FLEXIBLOCK R-150 IS PART NO. FLBL-V4 MANUFACTURED BY MAADI GROUP OR AN APPROVED EQUAL.
 GANGWAY CLOSURES SHALL BE SECURED TO BOTH ENDS OF THE RAMP TO REMAIN WITH CONNECTIONS THAT ALLOW THE MEMBERS TO DEVELOP THEIR FULL CAPACITY.



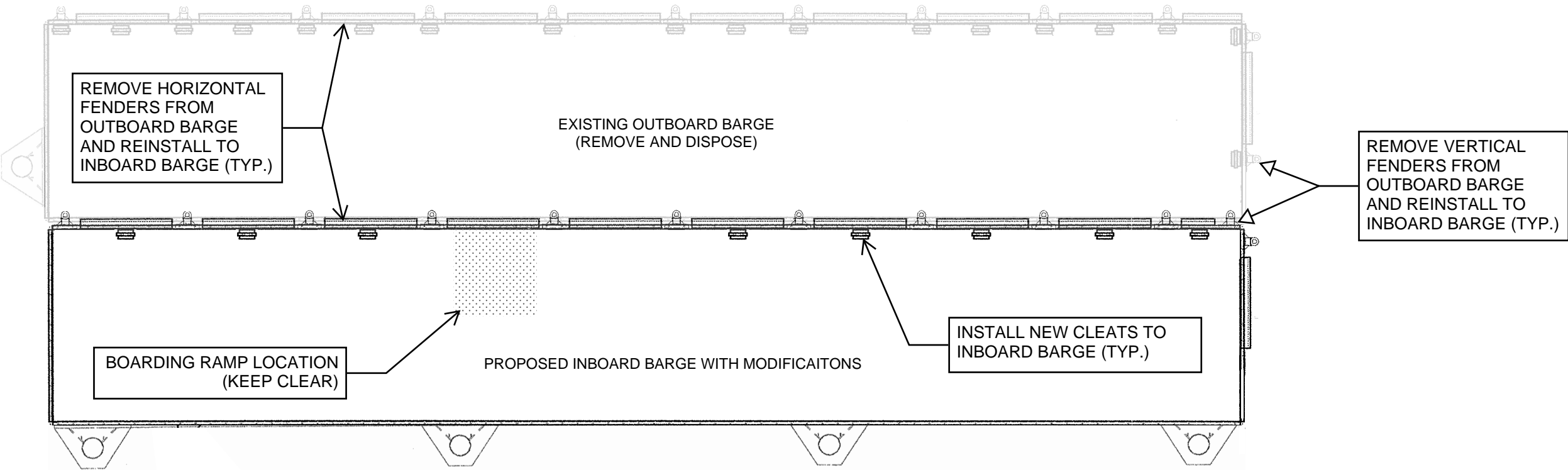
**SPECTACLE ISLAND FERRY LANDING EMERGENCY REPAIRS
FENDER AND CLEAT LAYOUT**

PLAN NOTES:

- 1. DRAWINGS NOT TO SCALE.
- 2. FIELD VERIFICATION REQUIRED.
- 3. DETAILS COPIED WITH EDITS FROM FROM PLAN TITLED "FERRY BERTHING FACILITY AND MARINA AT SPECTACLE ISLAND", DATED JULY 20, 2001 (SEE PDF ATTACHED TO THE BID DOCUMENTS).
- 4. GANGWAY, LANDINGS, RAMPS, AND HATCHES OMITTED FOR CLARITY.



EXISTING BARGE CONFIGURATION



PROPOSED BARGE CONFIGURATION

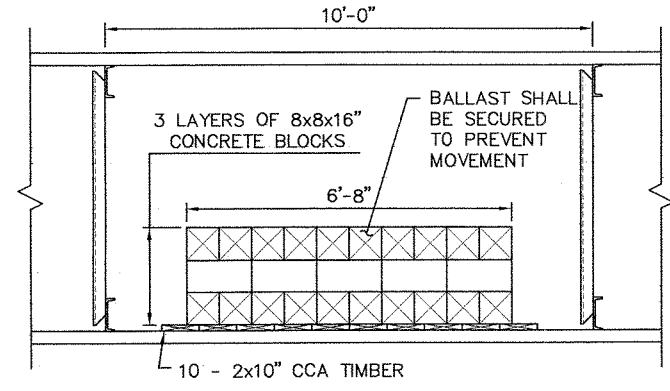
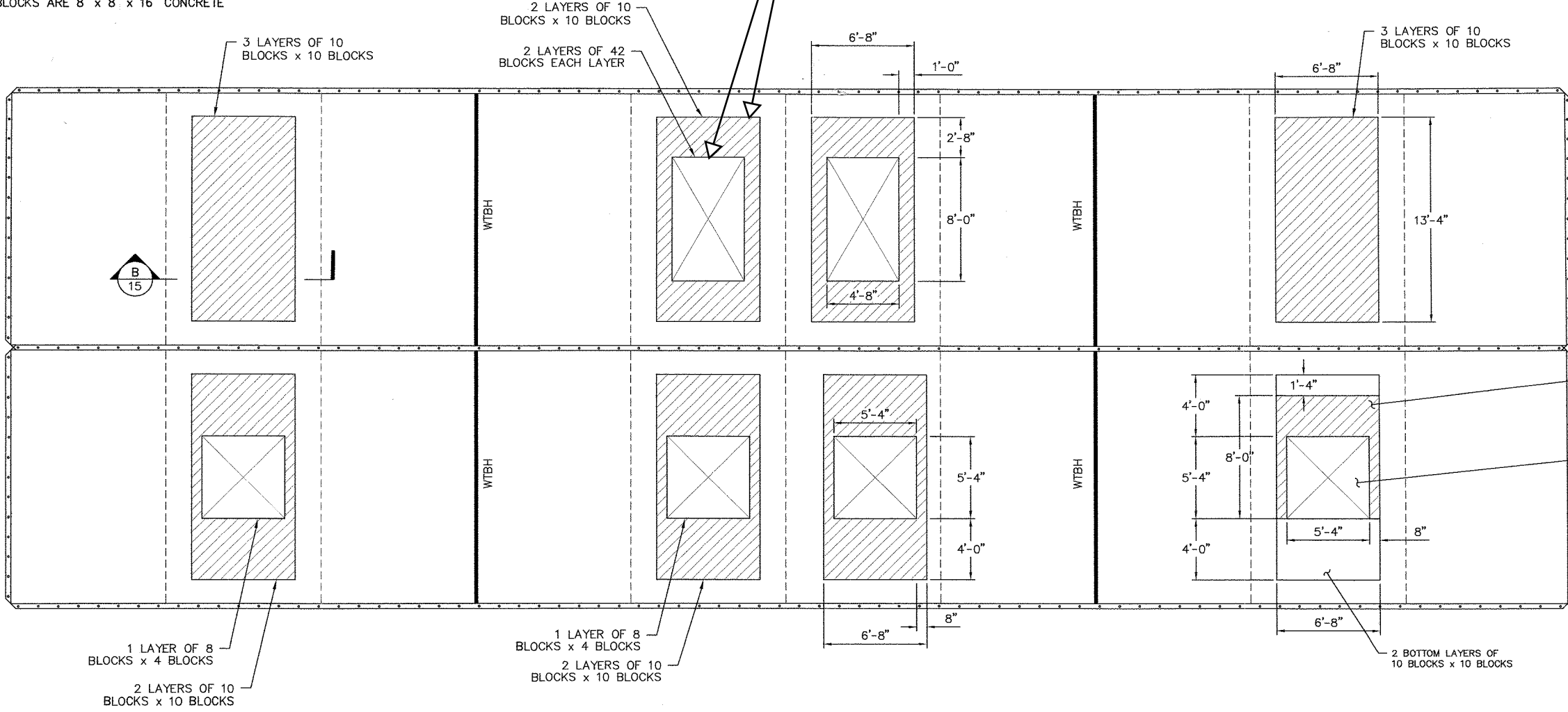
**SPECTACLE ISLAND FERRY LANDING EMERGENCY REPAIRS
BALAST AND DISPOSAL**

PLAN NOTES:

1. NOT TO SCALE.
2. FIELD VERIFICATION REQUIRED.
3. REFERENCE ATTACHMENTS FOR ADDITIONAL DETAILS
4. DETAILS COPIED WITH EDITS FROM FROM PLAN TITLED "FERRY BERTHING FACILITY AND MARINA AT SPECTACLE ISLAND", DATED JULY 20, 2001 (SEE PDF ATTACHED TO THE BID DOCUMENTS).

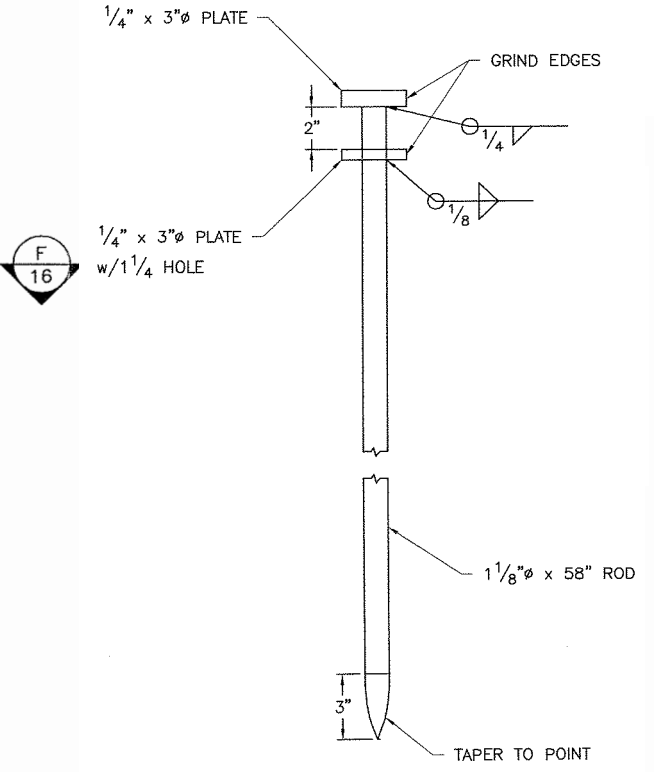
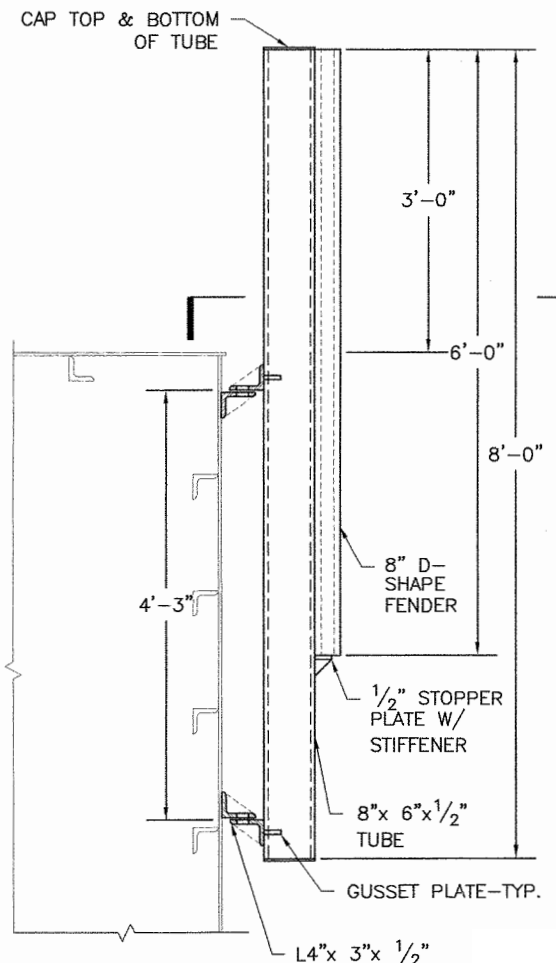
BARGE DISPOSAL INCLUDES REMOVAL OF ALL COMPONENTS CONNECTED TO OR TOUCHING THE BARGE INCLUDING BALLAST, TIMBER, ZINCS, HARDWARE, PILE GUIDES, HATCH COVERS, SEALS, UNLESS OTHERWISE DIRECTED BY OWNER (TYP.)

NOTE: BLOCKS ARE 8" x 8" x 16" CONCRETE



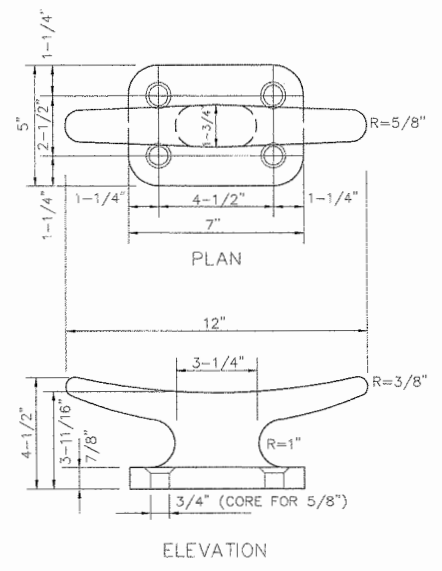
TYPICAL SECTION

BALLAST PLAN



B
14 PIN DETAIL

REMOVE SIDE FENDERS FROM OUTBOARD BARGE AND REINSTALL ON INSHORE BARGE



1
30 12" CAST STEEL ALLOY CLEAT - TYP.

**SPECTACLE ISLAND FERRY LANDING EMERGENCY REPAIRS
FENDER AND CLEAT DETAILS**

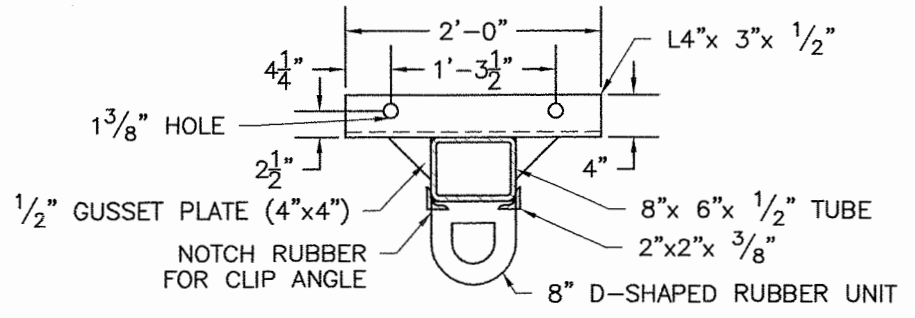
PLAN NOTES:

1. NOT TO SCALE.
2. FIELD VERIFICATION REQUIRED.
3. REFERENCE ATTACHMENTS FOR ADDITIONAL DETAILS
4. DETAILS COPIED WITH EDITS FROM FROM PLAN TITLED "FERRY BERTHING FACILITY AND MARINA AT SPECTACLE ISLAND", DATED JULY 20, 2001 (SEE PDF ATTACHED TO THE BID DOCUMENTS).

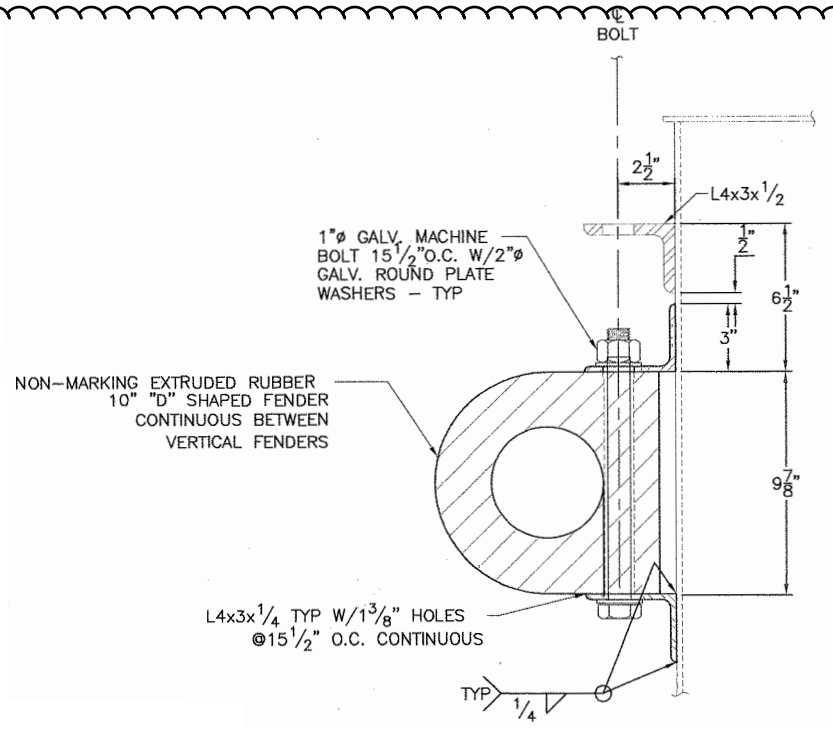
INSTALL NEW CLEATS TO THE INBOARD BARGE: INSTALLATION AND MATERIALS TO MATCH OUTBOARD BARGE

REMOVE HORIZONTAL FENDERS FROM OUTBOARD BARGE AND REINSTALL ON INSHORE BARGE

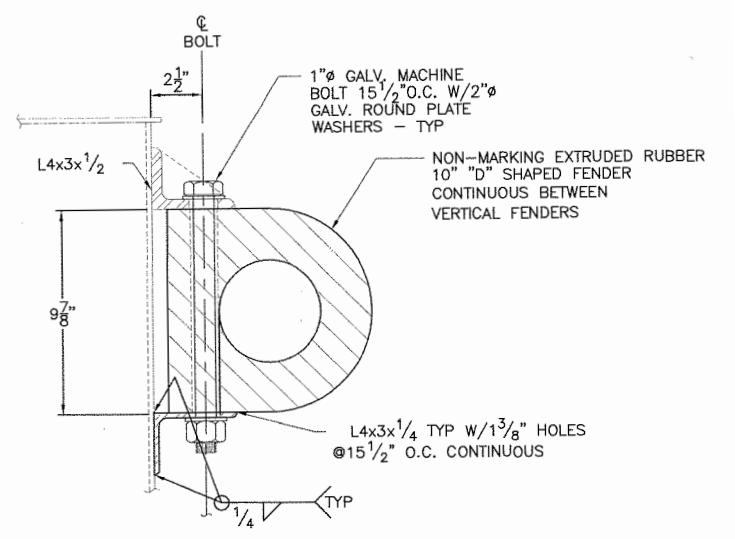
E
16 SIDE FENDER



F
16 SIDE FENDER - PLAN



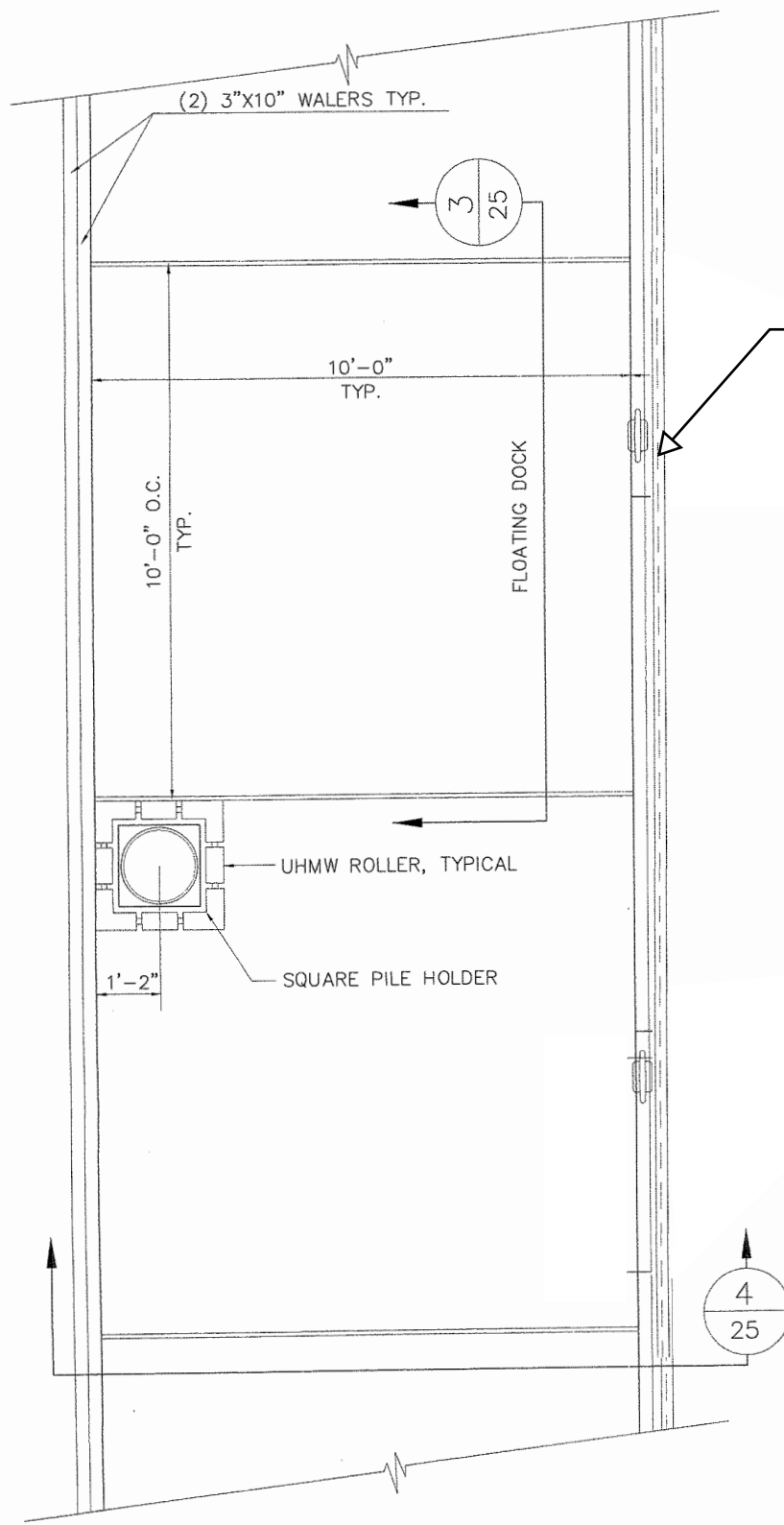
G
16 HORIZONTAL FENDER - MALE SIDE



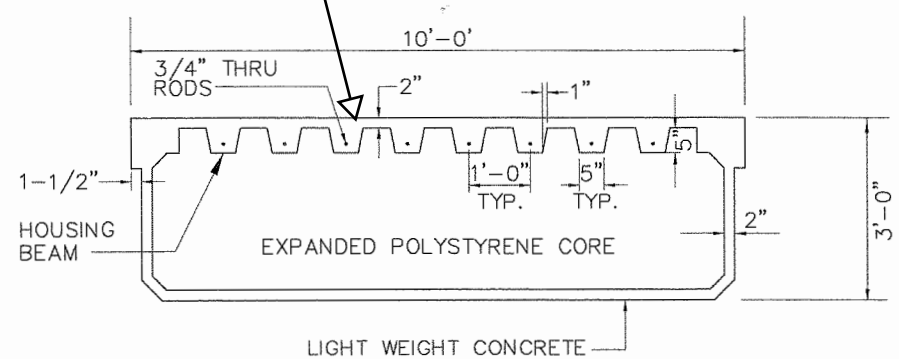
NOTES:

- HOLES FOR BOLTS SHALL MATCH BARGE CONNECTION ANGLE HOLES
- HORIZONTAL FENDER SHALL BE INSTALLED ON ALL EXTERIOR FACES
- FENDER SHALL BE CONTINUOUS BETWEEN VERTICAL FENDERS

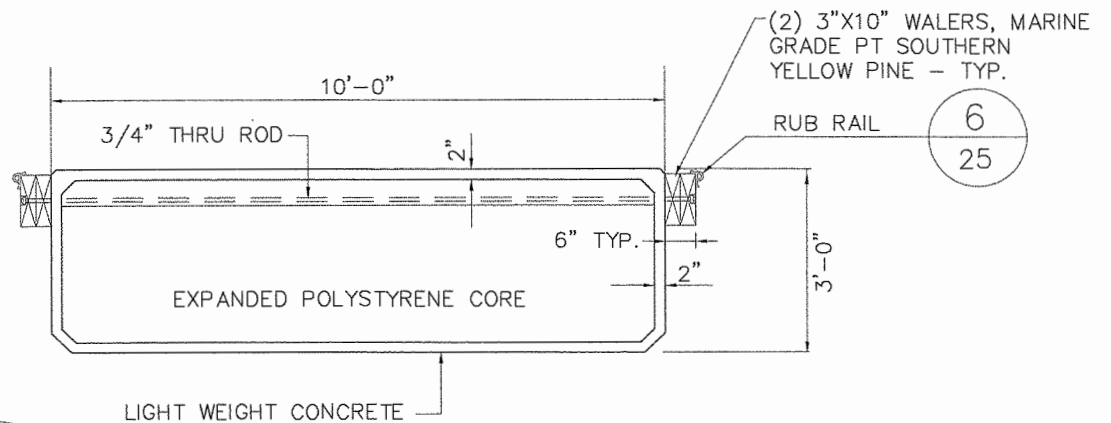
H
16 HORIZONTAL FENDER - FEMALE SIDE



REMOVE AND DISPOSE OF CONCRETE FLOATS AND APPURTENANCES (TYP.)



3/25 TYPICAL FLOATING DOCK LONGITUDINAL SECTION



4/25 TYPICAL FLOATING DOCK TRANSVERSE SECTION

TYPICAL FLOATING DOCK DETAILS

**SPECTACLE ISLAND FERRY LANDING EMERGENCY REPAIRS
EXISTING CONCRETE FLOAT TO BE REMOVED**

PLAN NOTES:
 1. NOT TO SCALE.
 2. FIELD VERIFICATION REQUIRED.
 3. REFERENCE ATTACHMENTS FOR ADDITIONAL DETAILS
 4. DETAILS COPIED WITH EDITS FROM FROM PLAN TITLED "FERRY BERTHING FACILITY AND MARINA AT SPECTACLE ISLAND", DATED JULY 20, 2001 (SEE PDF ATTACHED TO THE BID DOCUMENTS).