



Select Board
Town Manager
2198 Main Street
Brewster, Massachusetts 02631-1898
(508) 896-3701
FAX (508) 896-8089

ADDENDA AND MODIFICATIONS

1. Date: July 16, 2024
2. Re: Addendum No. 2
3. Project: Millstone Road Reconstruction IFB
4. Issued: June 19, 2024
5. To: Current Plan holders through Town procurement webpage: [Millstone Road Reconstruction IFB June 2024 | Town of Brewster \(brewster-ma.gov\)](https://www.brewster-ma.gov/procurement)
6. From: Donna J. Kalinick, Assistant Town Manager/Procurement Officer
Town of Brewster, 2198 Main St. Brewster MA 02631
7. This Addendum forms part of and modifies Bidding and contract Documents for the project named above. Acknowledge receipt of this Addendum on the attached Bid form.
8. Where any original item called for in the Project manual or indicated on the Drawings is supplemented by this addenda, the supplemental requirements shall supersede the previous item.
9. Where any original item is amended, voided, or superseded hereby, the other provisions of such items not specifically amended, voided, or superseded shall remain in effect.
10. This Addendum consists of this document and the following attachments:

1. Pre-Bid walkthrough 7/8/2024 sign in sheet
2. Questions from Bidders with Answers
3. Revised Millstone Road IFB Advertisement
4. Revised Bid Tab
5. Revised Plan Sheets (2)

Millstone Road Pre-Bid Site Walkthrough - Sign in Sheet

	Company Name and Address	Email	Phone
1	Northern Construction Service 1520 Park St, Palmer, MA	O. Johnson @ Northernconstruction.com	413-289-1230
	L. V. Merck - Lynch Corp. 236 Gifford St. Falmouth, MA 01540 P.O. Box 913	Importone lawrence@lynch.com	508-364-9757
	ROBERT B OWEN	KTRAMPK @ RobertB.Owen.com	774-212-5024
1	MCE Networks inc	Mike @ Dnetworks cafecool.com	508-224-5797
	Donna Kalinick ^{Town} Brewster - procurement officer		
	Griffin Ryder DPW		
	Alex Provoos DPW		
	Steve Rhoads	VHB	

Questions from Bidders with Answers

1. Is there a location for the contractor to site a construction trailer?
 1. Yes, the location for a construction trailer is intended to be within the laydown area included in the bid documents.
2. Will the AutoCAD design files be made available?
 1. Yes, the AutoCAD design files will be available to the winning bidder.
3. What electrical work is owned by the General Contractor?
 1. The utility pole relocations will be installed by Verizon. The General Contractor is responsible for the secondary electrical service connections at the relocated utility poles (where required) and the Rapid Rectangular Flashing Beacons per the Bid Documents.
4. How will full depth paving be performed in narrow areas?
 1. A full depth paving detail for areas less than 4' wide is shown on the plans, sheet 83, type 2 details.
5. Clarification on Clearing and Grubbing Item including trees.
 1. Clearing and Grubbing includes tree removal within those areas.
6. If there are areas where drainage infiltration is proposed and unsuitable materials are uncovered during construction how will that be handled?
 1. Excavation below 5-feet in depth is classified as Class B excavation. The field engineer will work with the contractor to identify the unsuitable soil limits and the amount of material to be removed.

Revised Ad: TOWN OF BREWSTER: INVITATION FOR BIDS
Millstone Road Reconstruction

Sealed bids for furnishing the Reconstruction of Millstone Road which consists of roadway milling and resurfacing, full depth pavement reconstruction, drainage improvements and sidewalk construction along Millstone Road and related work will be received at the Office of the Town Manager, Brewster Town Hall, 2198 Main St., Brewster, MA 02631 until the time specified below at which time the bids will be publicly opened and read.

Specifications and bid forms may be obtained at the Office of the Town Manager, 2198 Main St. Brewster, MA. Monday through Friday between 8:30 a.m. and 4:00 p.m or on our website, <https://www.brewster-ma.gov/procurement-services>. Hard copy set of the Bidding Documents may be obtained for a deposit of Fifty Dollars (\$50.00) or Twenty-Five Dollars (\$25.00) for plans only in cash or check, made payable to the Town of Brewster. This deposit will be refunded to document holders of record who return the Bidding Documents to the Town in good condition within fourteen (14) days after the opening of Bids. All requests for mailing Bidding Documents shall be accompanied by a separate, non-refundable handling and mailing fee in the amount of Twenty-Five Dollars (\$25.00) in cash or a separate check made payable to the Town of Brewster. One (1) set of Bidding Documents will be furnished for the deposit and mailing fee stated.

Bids will be opened in the Office of the Town Manager on Tuesday July 30, 2024 at 11 a.m. Each Bid must be accompanied by a bid security consisting of a BID BOND, CASH, or, CERTIFIED CHECK issued by a responsible bank or trust company in the amount of 5% of the bid price.

Pre-Bid Conference and Site Visit will be held at the Cape Cod Sea Camps Bay Property, Administration Building located at 3057 Main St. Brewster MA., on Monday July 8, 2024 at 11:00 a.m. It is imperative that all prospective bidders have a representative in attendance.

A performance bond in an amount equal to 100 percent of the total amount of the contract price with a surety company qualified to do business in the Commonwealth of Massachusetts will be required for the faithful performance of the contract, as well as a labor and materials bond in an amount equal to 100 percent of the total contract price.

All bids for this project are subject to applicable public bidding laws of Massachusetts, including, but not limited to G.L. c.30, §39M.

Attention is directed to the minimum wage rates to be paid as determined by the Commissioner of Labor and Workforce Development and the weekly payroll record submittal requirements under the provisions of Massachusetts General Laws, Chapter 149, Section 26 through 27D inclusive. Each prospective bidder proposing to bid on this project

Millstone Road

must be prequalified by the Massachusetts Department of Transportation (MassDOT) in accordance with 720 CR 5.00 "Prequalification of Contractors". **MassDOT prequalification of contractors with the class of work as, Highway Construction, for the project with an estimated value of \$7,985,949.00 will be required.**

Selection of the contractor will be based upon bidder qualifications, including evidence of past performance in similar projects, and bid price. The contract will be awarded to the bidder deemed by the awarding authority to be the lowest responsible and eligible bidder.

The bidder agrees that its bid shall be good and may not be withdrawn for a period of 30 days, Saturdays, Sundays and legal holidays excluded, after the opening of the bids.

The Town reserves the right to waive any informalities, to accept or reject, in whole or in part any or all bids, or take whatever other action may be deemed to be in the best interest of the Town.

The Town of Brewster

By: Peter Lombardi, Town Manager

Millstone Road

Supplemental Form for General Bid - Base Bid



Supplemental Form for General Bid Base Bid

Project: Millstone Road Improvements

Location: Brewster, Massachusetts

Item Number	Quantity	Item with Unit Bid Price Written in Words	Unit Price		Amount	
			Dollars	Cents	Dollars	Cents
101.	1.8	CLEARING AND GRUBBING at _____				
		A				
102.1	2,000	TREE TRIMMING at _____				
		FT				
102.511	67	TREE PROTECTION - ARMORING & PRUNING at _____				
		EA				
102.521	200	TREE AND PLANT PROTECTION FENCE at _____				
		FT				
103.	57	TREE REMOVED - DIAMETER UNDER 24 INCHES at _____				
		EA				

Supplemental Form for General Bid - Base Bid

Item Number	Quantity	Item with Unit Bid Price Written in Words	Unit Price		Amount	
			Dollars	Cents	Dollars	Cents
120.1	9,500	UNCLASSIFIED EXCAVATION at _____ CY				
141.1	490	TEST PIT FOR EXPLORATION at _____ CY				
142.	2,050	CLASS B TRENCH EXCAVATION at _____ CY				
144.	50	CLASS B ROCK EXCAVATION at _____ CY				
145.	3	DRAINAGE STRUCTURE ABANDONED at _____ EA				
146.	28	DRAINAGE STRUCTURE REMOVED at _____ EA				
151.	7,300	GRAVEL BORROW at _____ CY				

Supplemental Form for General Bid - Base Bid

Item Number	Quantity	Item with Unit Bid Price Written in Words	Unit Price		Amount	
			Dollars	Cents	Dollars	Cents
151.2	335	GRAVEL BORROW FOR BACKFILLING STRUCTURES AND PIPES at _____ CY				
153.	20	CONTROL DENSITY FILL - EXCAVATABLE at _____ CY				
156.	50	CRUSHED STONE at _____ TON				
170.	19,000	FINE GRADING AND COMPACTING - SUBGRADE AREA at _____ SY				
201.	102	CATCH BASIN at _____ EA				
202.	12	MANHOLE at _____ EA				
204.	23	GUTTER INLET at _____ EA				

Supplemental Form for General Bid - Base Bid

Item Number	Quantity	Item with Unit Bid Price Written in Words	Unit Price		Amount	
			Dollars	Cents	Dollars	Cents
205.	39	LEACHING BASIN at _____ EA				
205.1	145	LEACHING GALLEY at _____ EA				
220.	7	DRAINAGE STRUCTURE ADJUSTED at _____ EA				
220.2	20	DRAINAGE STRUCTURE REBUILT at _____ FT				
220.5	5	DRAINAGE STRUCTURE REMODELED at _____ EA				
222.3	230	FRAME AND GRATE (OR COVER) MUNICIPAL STANDARD at _____ EA				
223.2	15	FRAME AND GRATE (OR COVER) REMOVED AND DISCARDED at _____ EA				

Supplemental Form for General Bid - Base Bid

Item Number	Quantity	Item with Unit Bid Price Written in Words	Unit Price		Amount	
			Dollars	Cents	Dollars	Cents
227.3	49	REMOVAL OF DRAINAGE STRUCTURE SEDIMENT at _____ CY				
227.31	150	REMOVAL OF DRAINAGE PIPE SEDIMENT at _____ FT				
238.10	170	10 INCH DUCTILE IRON PIPE at _____ FT				
252.12	2,100	12 INCH CORRUGATED PLASTIC PIPE at _____ FT				
302.06	50	6 INCH DUCTILE IRON WATER PIPE at _____ FT				
309.	1,680	DUCTILE IRON FITTINGS FOR WATER PIPE at _____ LB				
350.06	5	6 INCH GATE AND GATE BOX at _____ EA				

Supplemental Form for General Bid - Base Bid

Item Number	Quantity	Item with Unit Bid Price Written in Words	Unit Price		Amount	
			Dollars	Cents	Dollars	Cents
358.	15	GATE BOX ADJUSTED at _____ EA				
376	5	HYDRANT at _____ EA				
376.4	5	HYDRANT REMOVED AND DISCARDED at _____ EA				
376.5	6	HYDRANT ADJUSTED at _____ EA				
381.3	39	SERVICE BOX ADJUSTED at _____ EA				
384.2	39	CURB STOP ADJUSTED at _____ EA				
390.	1	REMOVE AND RESET IRRIGATION at _____ LS				
402.	950	DENSE GRADED CRUSHED STONE FOR SUB-BASE at _____ CY				

Supplemental Form for General Bid - Base Bid

Item Number	Quantity	Item with Unit Bid Price Written in Words	Unit Price		Amount	
			Dollars	Cents	Dollars	Cents
415.1	31,700	PAVEMENT STANDARD MILLING at _____ SY				
431.	3,800	HIGH EARLY STRENGTH CEMENT CONCRETE BASE COURSE at _____ SY				
440.	55,800	CALCIUM CHLORIDE FOR ROADWAY DUST CONTROL at _____ LB				
443.	25	WATER FOR ROADWAY DUST CONTROL at _____ MGL				
450.23	4,100	SUPERPAVE SURFACE COURSE - 12.5 (SSC - 12.5) at _____ TON				
450.31	5,000	SUPERPAVE INTERMEDIATE COURSE - 12.5 (SIC - 12.5) at _____ TON				
450.41	1,000	SUPERPAVE BASE COURSE - 25.0 (SBC - 25.0) at _____ TON				

Supplemental Form for General Bid - Base Bid

Item Number	Quantity	Item with Unit Bid Price Written in Words	Unit Price		Amount	
			Dollars	Cents	Dollars	Cents
450.52	300	SUPERPAVE LEVELING COURSE - 9.5 (SLC - 9.5) at _____ TON				
451.	2,100	HMA FOR PATCHING at _____ TON				
452.	4,700	ASPHALT EMULSION FOR TACK COAT at _____ GAL				
453.	40,900	HMA JOINT ADHESIVE at _____ FT				
470.2	15,550	HOT MIX ASPHALT BERM - TYPE A MODIFIED at _____ FT				
472.	470	TEMPORARY ASPHALT PATCHING at _____ TON				
504.	6,300	GRANITE CURB TYPE VA4 - STRAIGHT at _____ FT				

Supplemental Form for General Bid - Base Bid

Item Number	Quantity	Item with Unit Bid Price Written in Words	Unit Price		Amount	
			Dollars	Cents	Dollars	Cents
504.1	200	GRANITE CURB TYPE VA4 - CURVED at _____ FT				
505.	75	GRANITE CURB TYPE VA5 - STRAIGHT at _____ FT				
509.	1,050	GRANITE TRANSITION CURB FOR PEDESTRIAN CURB RAMPS - STRAIGHT at _____ FT				
509.1	260	GRANITE TRANSITION CURB FOR PEDESTRIAN CURB RAMPS - CURVED at _____ FT				
580.	10	CURB REMOVED AND RESET at _____ FT				
590.	20	CURB REMOVED AND STACKED at _____ FT				
655.4	80	SPLIT RAIL WOOD FENCE at _____ FT				

Supplemental Form for General Bid - Base Bid

Item Number	Quantity	Item with Unit Bid Price Written in Words	Unit Price		Amount	
			Dollars	Cents	Dollars	Cents
656.1	100	8 FOOT VINYL FENCE at _____ FT				
657.	100	TEMPORARY FENCE at _____ FT				
670.	250	FENCE REMOVED AND RESET at _____ FT				
691.	50	BALANCE STONE WALL REMOVED AND REBUILT at _____ FT				
697.1	180	SILT SACK at _____ EA				
701.2	360	CEMENT CONCRETE PEDESTRIAN CURB RAMP at _____ SY				
702.	1,550	HOT MIX ASPHALT SIDEWALK OR DRIVEWAY at _____ TON				
702.1	15	SHELL DRIVEWAY at _____ CY				

Supplemental Form for General Bid - Base Bid

Item Number	Quantity	Item with Unit Bid Price Written in Words	Unit Price		Amount	
			Dollars	Cents	Dollars	Cents
702.2	45	COBBLESTONE DRIVEWAY at _____ SY				
702.3	20	BLUESTONE GRAVEL DRIVEWAY at _____ CY				
706.9	10	COBBLESTONES REMOVED & STACKED at _____ SY				
707.82	4	POST REMOVED AND DISCARDED at _____ EA				
709.	2	WETLAND MARKER POST at _____ EA				
711.	17	BOUND REMOVED AND RESET at _____ EA				
715.	69	RURAL MAILBOX REMOVED AND RESET at _____ EA				

Supplemental Form for General Bid - Base Bid

Item Number	Quantity	Item with Unit Bid Price Written in Words	Unit Price		Amount	
			Dollars	Cents	Dollars	Cents
740.	16	ENGINEERS FIELD OFFICE AND EQUIPMENT (TYPE A) at _____ MO				
748.	1	MOBILIZATION at _____ LS				
751.	1,150	LOAM FOR ROADSIDES at _____ CY				
756.	1	NPDES STORMWATER POLLUTION PREVENTION PLAN at _____ LS				
765.	9,900	SEEDING at _____ SY				
767.121	150	SEDIMENT CONTROL BARRIER at _____ FT				
772.039	23	ARBORVITAE - DEGROOTS SPIRE 5-6 FEET at _____ EA				

Supplemental Form for General Bid - Base Bid

Item Number	Quantity	Item with Unit Bid Price Written in Words	Unit Price		Amount	
			Dollars	Cents	Dollars	Cents
772.338	6	EASTERN RED CEDAR - 6-7 FEET at _____				
		EA				
776.524	2	MAPLE - RED - ARMSTRONG 2-2.5 INCH CALIPER at _____				
		EA				
777.828	3	SASSAFRAS - 1.5-2-INCH at _____				
		EA				
785.633	5	INKBERRY / #3 at _____				
		EA				
786.109	1	JUNIPER - COMMON / #2 at _____				
		EA				
787.716	10	SPICEBUSH - 5-6 FEET at _____				
		EA				
789.333	13	BAYBERRY - NORTHERN / 2-3 FEET at _____				
		EA				
789.335	3	BAYBERRY - NORTHERN / 3-4 FEET B & B at _____				
		EA				

Supplemental Form for General Bid - Base Bid

Item Number	Quantity	Item with Unit Bid Price Written in Words	Unit Price		Amount	
			Dollars	Cents	Dollars	Cents
789.435	2	BEACH PLUM / 4-5 FEET B & B at _____				
		EA				
789.633	45	BLUEBERRY - HIGHBUSH / #1 at _____				
		EA				
793.445	19	ROSE - VIRGINIA / 18-24 INCH at _____				
		EA				
794.333	33	SUMAC SHRUB - FRAGRANT / 18-24" SPD at _____				
		EA				
794.343	8	SUMAC SHRUB - STAGHORN / 2-3 FEET at _____				
		EA				
795.011	4	VIBURNUM - ARROWWOOD / 24-30 INCH at _____				
		EA				
795.157	4	WINTERBERRY / #3 at _____				
		EA				

Supplemental Form for General Bid - Base Bid

Item Number	Quantity	Item with Unit Bid Price Written in Words	Unit Price		Amount	
			Dollars	Cents	Dollars	Cents
796.231	135	SWITCH GRASS / 1 GAL. at _____ EA				
796.341	173	NORTHERN SEA OATS / 1 GAL. at _____ EA				
796.501	10,666	DAFFODIL / BULB at _____ EA				
804.3	275	3 INCH ELECTRICAL CONDUIT TYPE NM - PLASTIC - (UL) at _____ FT				
811.31	3	PULL BOX 12 X 12 INCHES - SD2.031 at _____ EA				
824.211	1	RECTANGULAR RAPID FLASHING BEACON (SOLAR) LOCATION NO. 1 at _____ LS				
824.212	1	RECTANGULAR RAPID FLASHING BEACON (SOLAR) LOCATION NO. 2 at _____ LS				

Supplemental Form for General Bid - Base Bid

Item Number	Quantity	Item with Unit Bid Price Written in Words	Unit Price		Amount	
			Dollars	Cents	Dollars	Cents
824.213	1	RECTANGULAR RAPID FLASHING BEACON (SOLAR) LOCATION NO. 3 at _____ LS				
824.401	1	RECTANGULAR RAPID FLASHING BEACON (AC POWER) LOCATION NO. 1 at _____ LS				
826.7	10	ELECTRIC SERVICE RISER RELOCATION at _____ EA				
832.	300	WARNING-REGULATORY AND ROUTE MARKER - ALUM. PANEL (TYPE A) at _____ SF				
847.1	50	SIGN SUP (N/GUIDE)+RTE MKR W/1 BRKWAY POST ASSEMBLY - STEEL at _____ EA				
851.1	100	TRAFFIC CONES FOR TRAFFIC MANAGEMENT at _____ DAY				
852.	700	SAFETY SIGNING FOR TRAFFIC MANAGEMENT at _____ SF				

Supplemental Form for General Bid - Base Bid

Item Number	Quantity	Item with Unit Bid Price Written in Words	Unit Price		Amount	
			Dollars	Cents	Dollars	Cents
852.11	75	TEMPORARY PEDESTRIAN BARRICADE at _____ FT				
853.1	5	PORTABLE BREAKAWAY BARRICADE TYPE III at _____ EA				
854.016	9,800	TEMPORARY PAVING MARKINGS - 6 INCH (PAINTED) at _____ FT				
854.036	9,800	TEMPORARY PAVING MARKINGS - 6 INCH (TAPE) at _____ FT				
854.6	45	TEMPORARY PORTABLE RUMBLE STRIP at _____ DAY				
856.12	340	PORTABLE CHANGEABLE MESSAGE SIGN at _____ DAY				
859.	3,900	REFLECTORIZED DRUM at _____ DAY				

Supplemental Form for General Bid - Base Bid

Item Number	Quantity	Item with Unit Bid Price Written in Words	Unit Price		Amount	
			Dollars	Cents	Dollars	Cents
859.1	25	REFLECTORIZED DRUMS WITH SEQUENTIAL FLASHING WARNING LIGHTS at _____ DAY				
860.112	20	12 INCH REFLECTORIZED WHITE LINE (PAINTED) at _____ FT				
861.104	200	4 INCH REFLECTORIZED YELLOW LINE (PAINTED) at _____ FT				
864.	85	PAVEMENT ARROW REFLECTORIZED WHITE (PAINTED) at _____ SF				
864.04	125	PAVEMENT ARROWS AND LEGENDS REFLECTORIZED WHITE (THERMOPLASTIC) at _____ SF				
865.2	1,200	PAVEMENT SURFACE COATING at _____ SF				
866.112	150	12 INCH REFLECTORIZED WHITE LINE (THERMOPLASTIC) at _____ FT				

Supplemental Form for General Bid - Base Bid

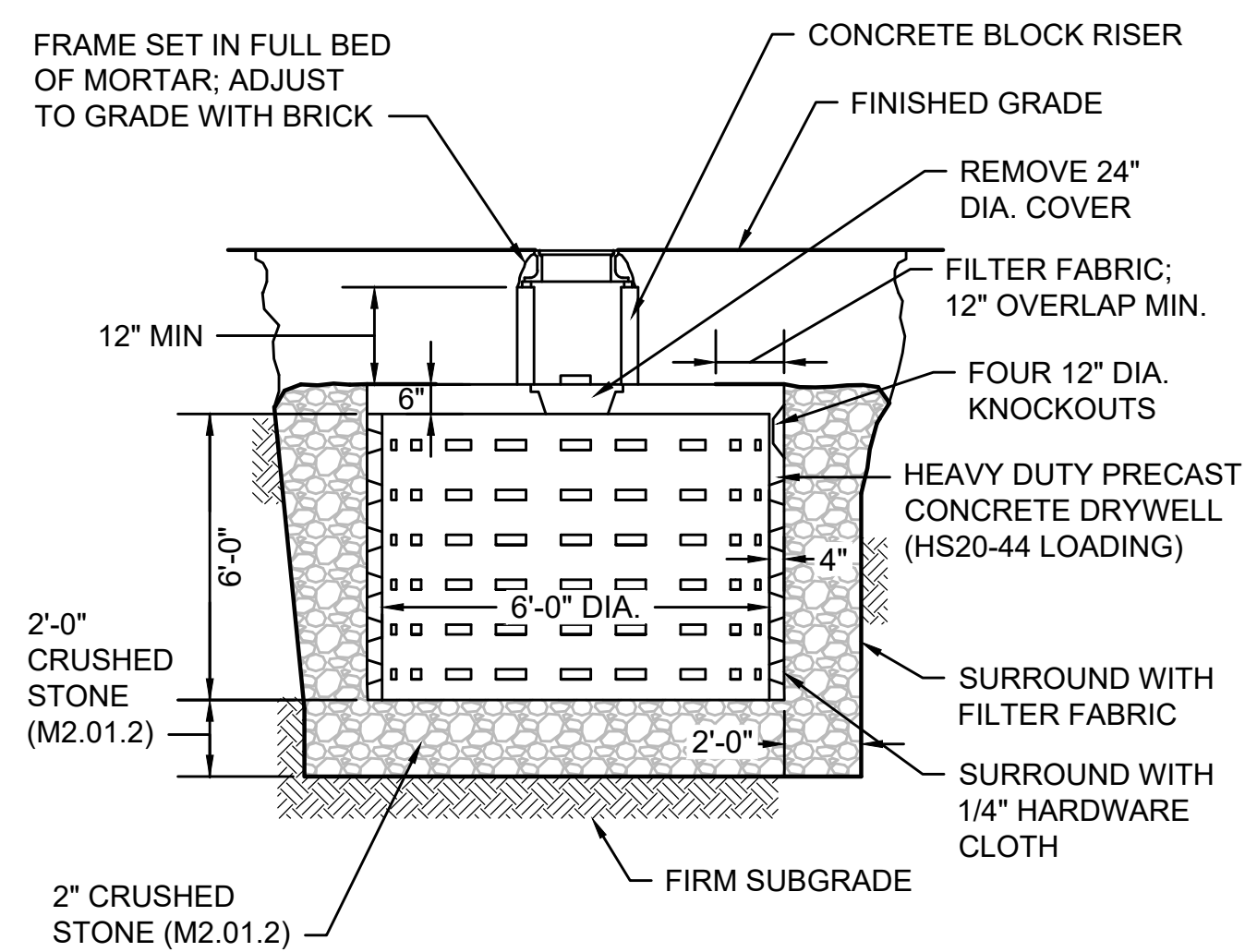
Item Number	Quantity	Item with Unit Bid Price Written in Words	Unit Price		Amount	
			Dollars	Cents	Dollars	Cents
868.04	25,500	4 INCH REFLECTORIZED WHITE LINE (EPOXY) at _____ FT				
868.12	2,000	12 INCH REFLECTORIZED WHITE LINE (EPOXY) at _____ FT				
869.04	26,000	4 INCH REFLECTORIZED YELLOW LINE (EPOXY) at _____ FT				
874.01	76	STREET NAME SIGN - TOWN STANDARD at _____ EA				
874.2	10	TRAFFIC SIGN REMOVED AND RESET at _____ EA				
874.4	100	TRAFFIC SIGN REMOVED AND STACKED at _____ EA				
903.	2	3000 PSI, 1.5 INCH, 470 CEMENT CONCRETE at _____ CY				

Supplemental Form for General Bid - Base Bid

Item Number	Quantity	Item with Unit Bid Price Written in Words	Unit Price		Amount	
			Dollars	Cents	Dollars	Cents
999.	1	CONSTRUCTION STAKING at _____ LS				
999.1	1	POLICE DETAILS at _Four hundred fifty-six thousand six hundred sixty_ ALL	\$456,660	00	\$456,660	00

TOTAL BASE BID: _____

(Written in Words):

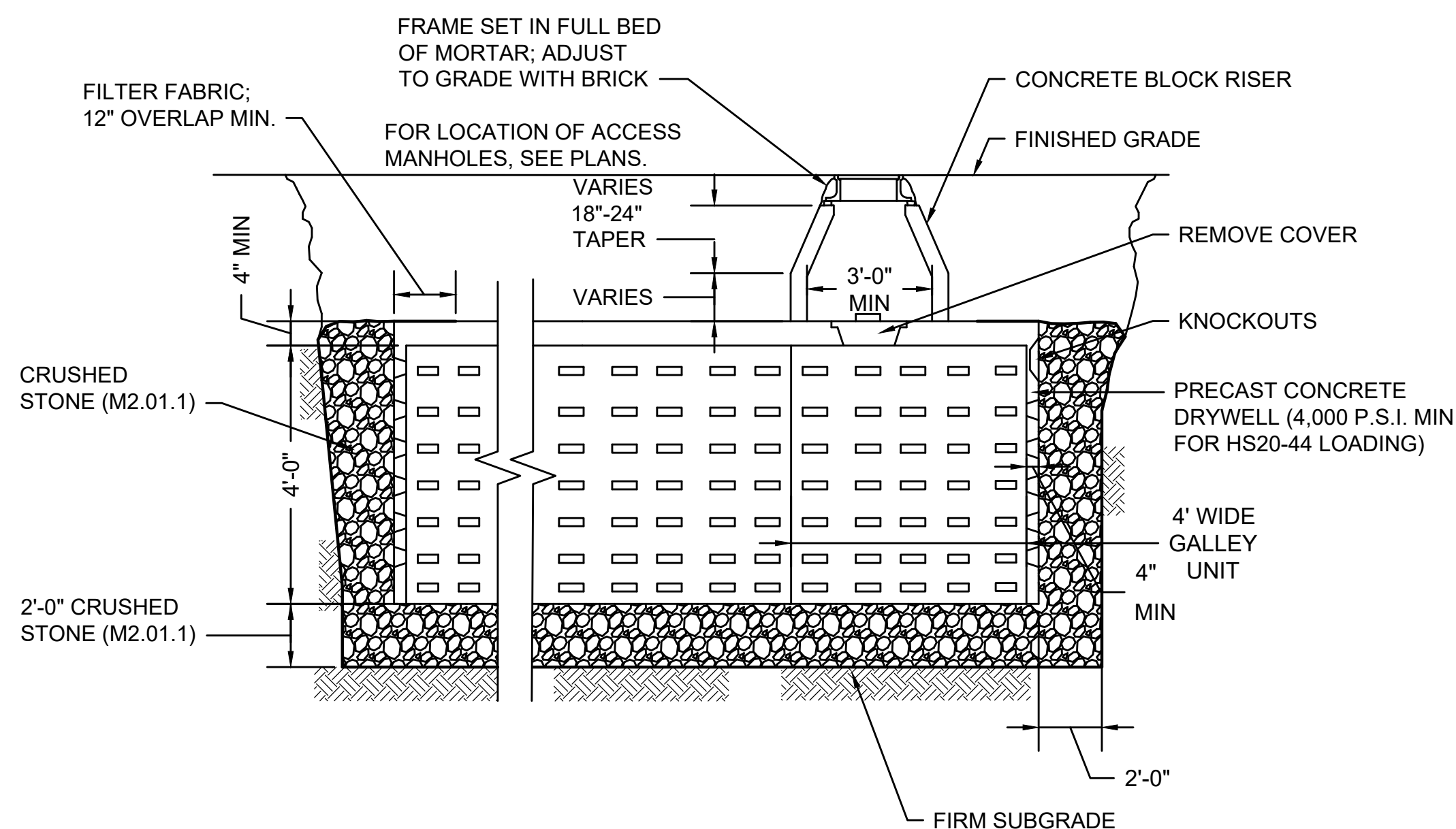


6' DIAMETER LEACHING BASIN

SCALE: N.T.S.

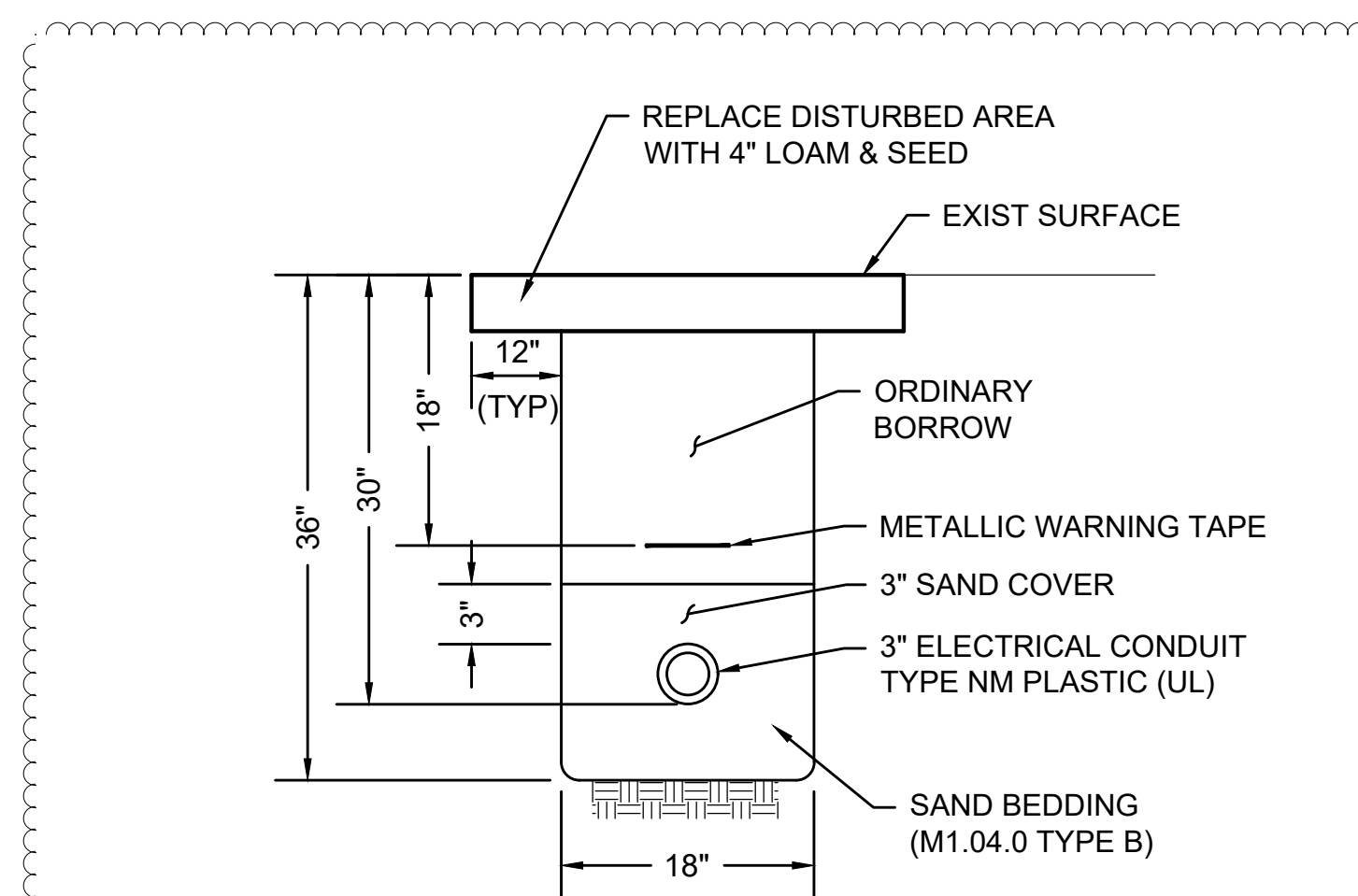
NOTES:

- CONTRACTOR TO DETERMINE GALLEY DEPTH BASED ON FIELD ELEVATIONS.
- MAINTAIN MINIMUM 1% SLOPE FOR ALL PIPES CONNECTING TO LEACHING BASINS AND LEACHING GALLEYS.



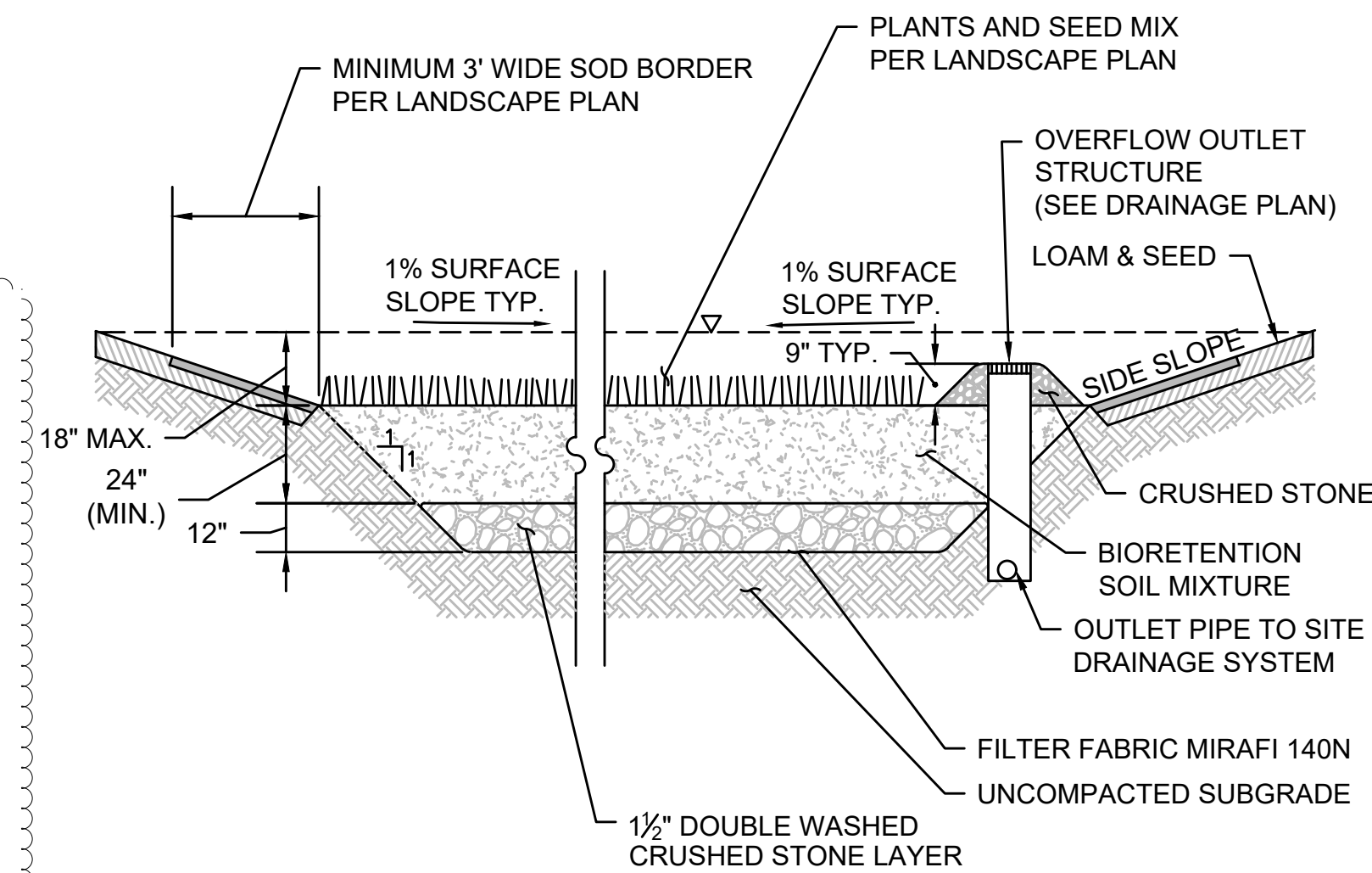
LEACHING GALLEY

SCALE: N.T.S.



CONDUIT IN GRASS

SCALE: N.T.S.



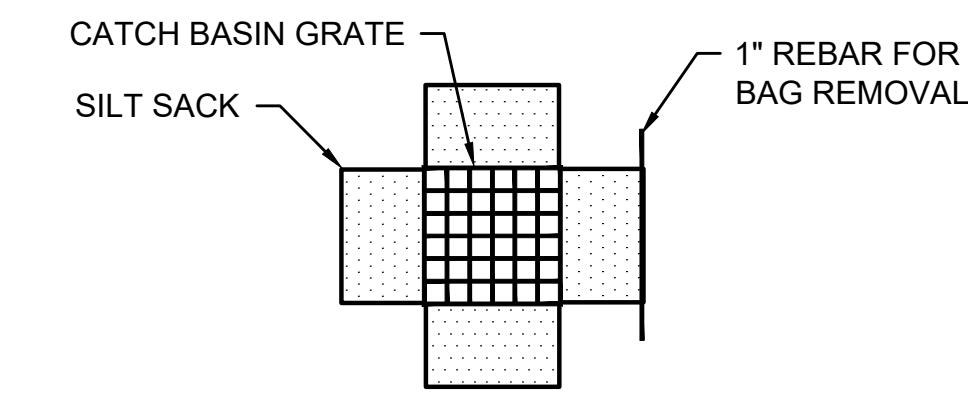
NOTES

- SIDE SLOPES SHALL BE 3:1 MAX. 2% MIN.

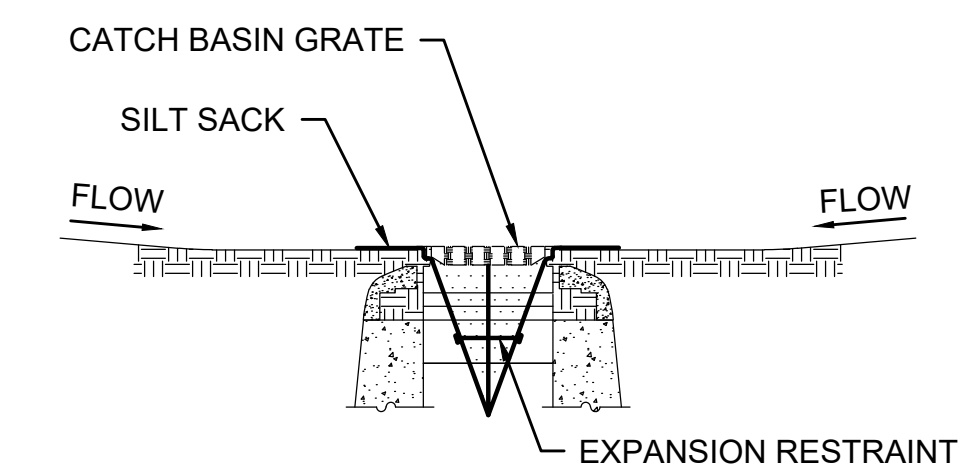
BIORETENTION BASIN (RAIN GARDEN)

SCALE: N.T.S.

DATE: MARCH 2020



PLAN VIEW



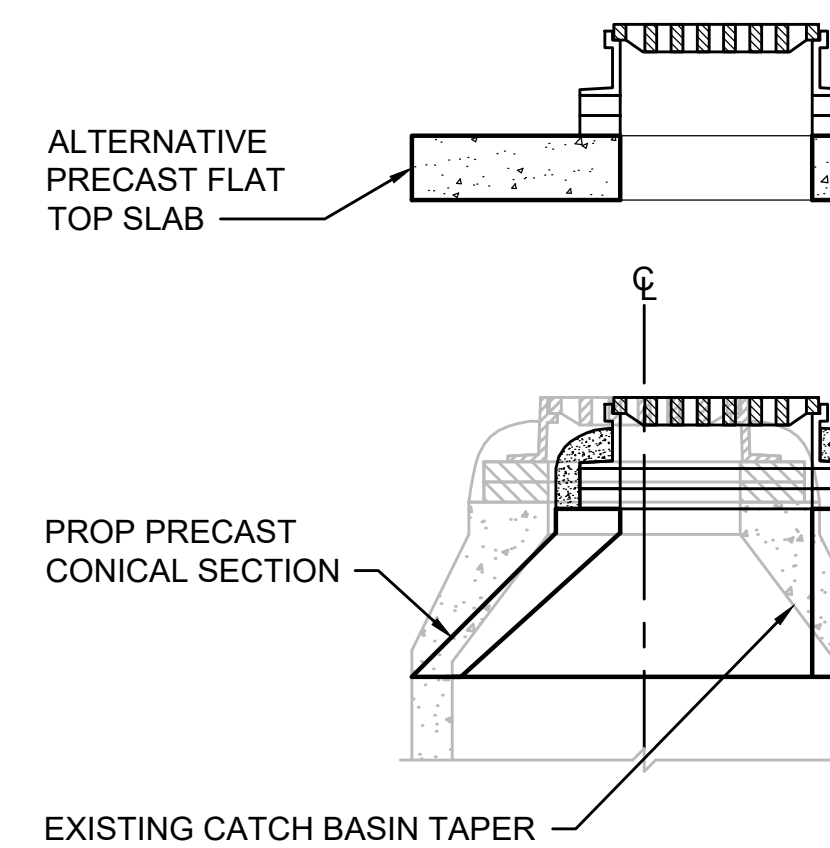
SECTION VIEW

NOTES:

- INSTALL SILT SACK IN EXISTING CATCH BASINS, BEFORE COMMENCING WORK, AND IN NEW CATCH BASINS IMMEDIATELY AFTER INSTALLATION OF STRUCTURE. MAINTAIN UNTIL BINDER COURSE PAVING IS COMPLETE OR A PERMANENT STAND OF GRASS HAS BEEN ESTABLISHED.
- GRATE TO BE PLACED OVER SILT SACK.
- SILT SACK SHALL BE INSPECTED PERIODICALLY AND AFTER ALL STORM EVENTS AND CLEANING OR REPLACEMENT SHALL BE PERFORMED

INLET PROTECTION - SILT SACK IN CATCH BASIN

SCALE: N.T.S.

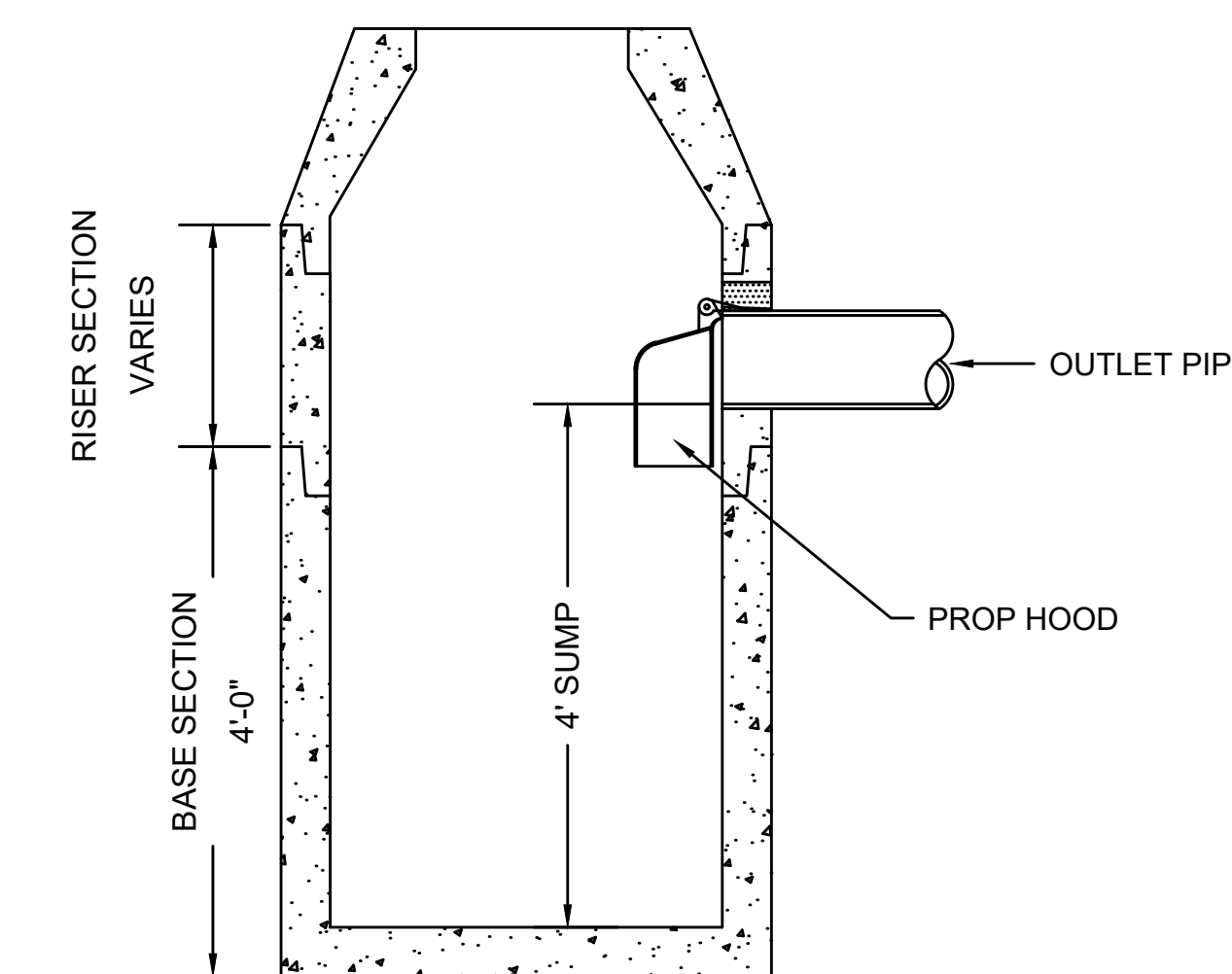


CB TREATMENT NOTES

- BASED ON ACTUAL FIELD CONDITIONS; THE CONTRACTOR SHALL DETERMINE WHICH STYLE OF TOP SECTION SHOULD BE USED.
- CATCH BASIN FRAME AND GRATE SHALL BE SET IN FULL MORTAR BED. ADJUST TO GRADE WITH CLAY BRICK AND MORTAR (2 BRICK COURSES TYPICALLY, 5 BRICK COURSES MAXIMUM).

CATCH BASIN REMODELED

SCALE: N.T.S.

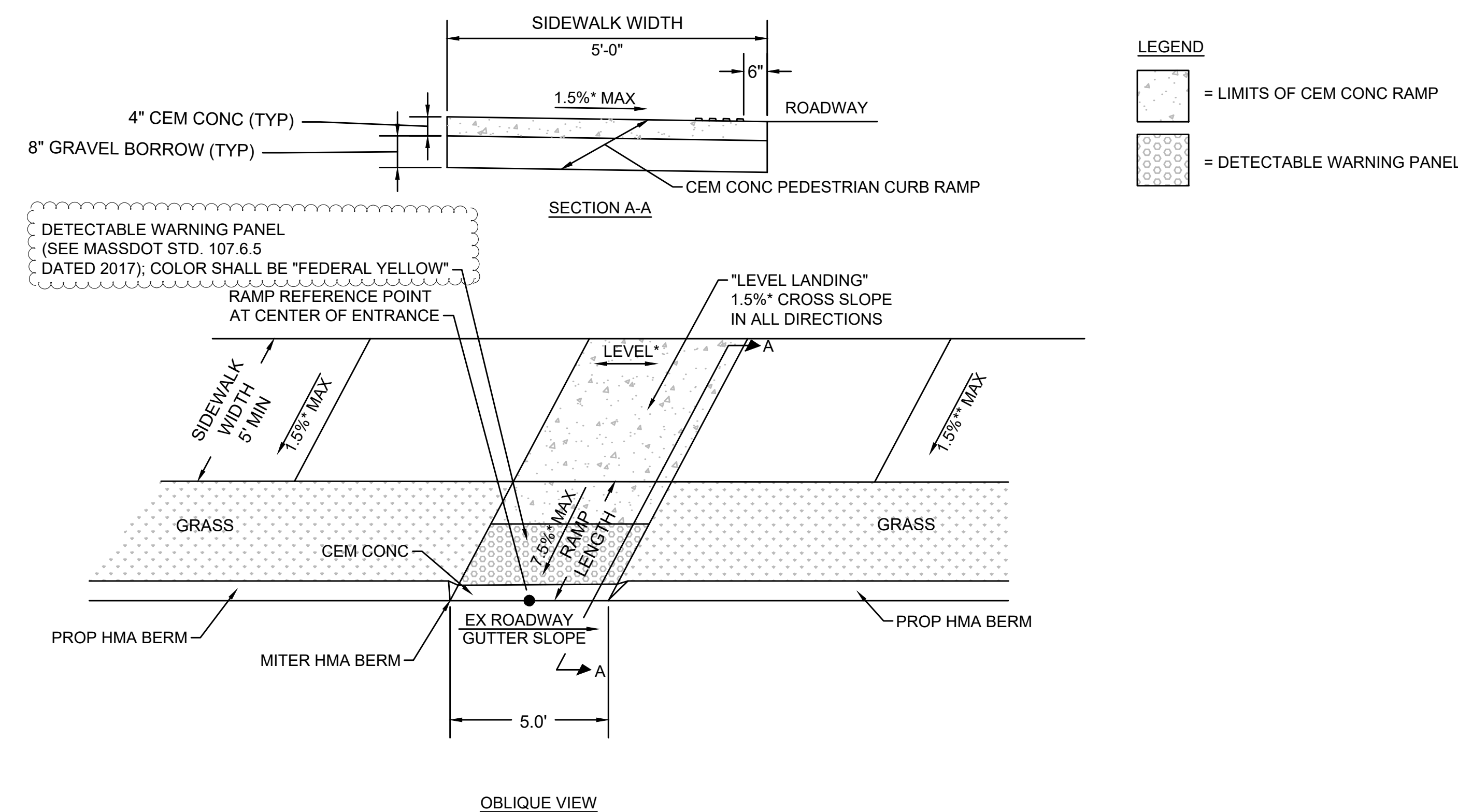
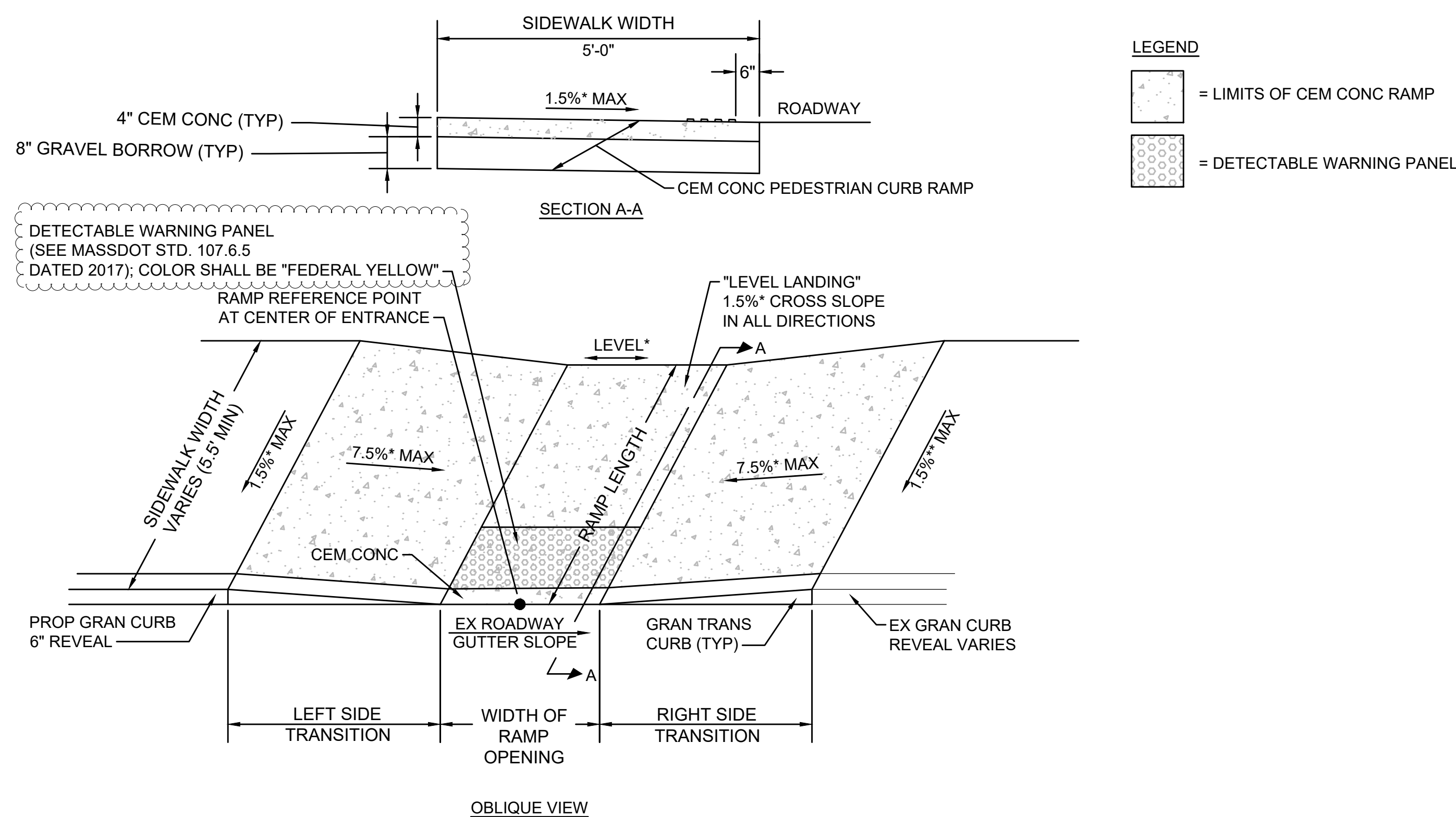


NOTE:

ALL CATCH BASINS SHALL CONFORM TO MASSDOT CONSTRUCTION STANDARD 201.4.0 EXCEPT FOR 4' SUMP DEPTH AS SHOWN.

DEEP SUMP CATCH BASIN

SCALE: N.T.S.



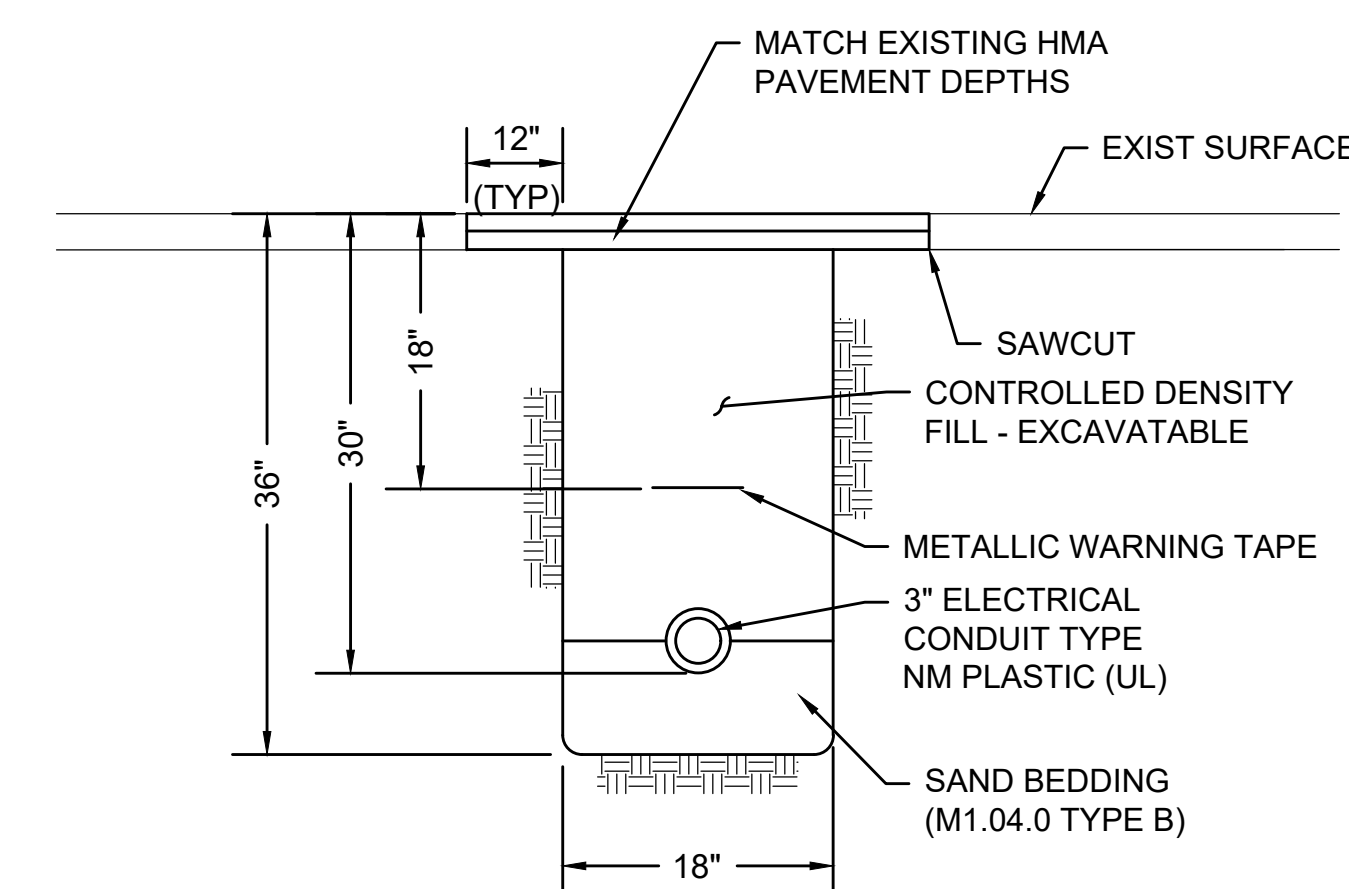
PEDESTRIAN CURB RAMP - LESS THAN 6.50' WIDTH

SCALE: N.T.S.

PEDESTRIAN CURB RAMP DATA											
NO.	LOCATION (REF POINT)	SIDEWALK WIDTH	RAMP WIDTH	RAMP LENGTH	OPENING ELEV	LEFT SIDE			RIGHT SIDE		
						ROADWAY GUTTER	REVEAL	TRANS	ROADWAY GUTTER	REVEAL	TRANS
1	STA 311+35.46, 6.9 RT ALGN - ROUTE 6A RECORD BASELINE	5.4'-5.5'	5'-0"	5'-5"	44.24	-1.23%	6"	6.5'	0.65%	6"	7.67'
2	STA 311+35.36, 17.0 LT ALGN - ROUTE 6A RECORD BASELINE	5'-6"	5'-0"	5'-6"	44.25	1.67%	6"	9.0'	-1.54%	6"	6.5'
29	STA 296+42.31, 19.8 LT ALGN - MILLSTONE RD CONST BASELINE	5'-6"	5'-0"	5'-6"	111.78	-0.20%	6"	7.67'	N/A	6"	N/A
30	STA 297+21.26, 18.4 LT ALGN - MILLSTONE RD CONST BASELINE	5'-6"	5'-0"	5'-6"	111.33	N/A	6"	N/A	-0.50%	6"	6.5'

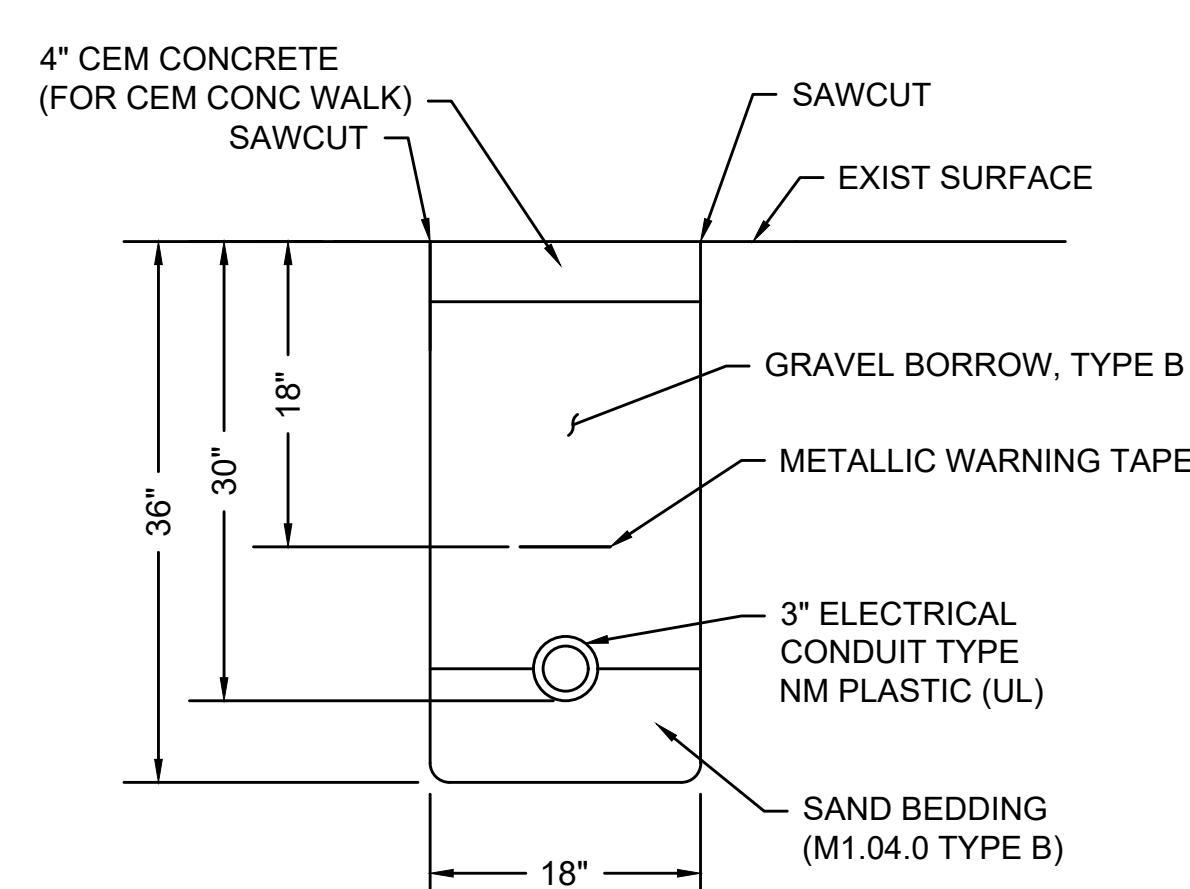
PEDESTRIAN CURB RAMP - LESS THAN 6.50' WIDTH WITH GRASS STRIP

SCALE: N.T.S.



CONDUIT CROSSING ROADWAY/DRIVEWAY

SCALE: N.T.S.

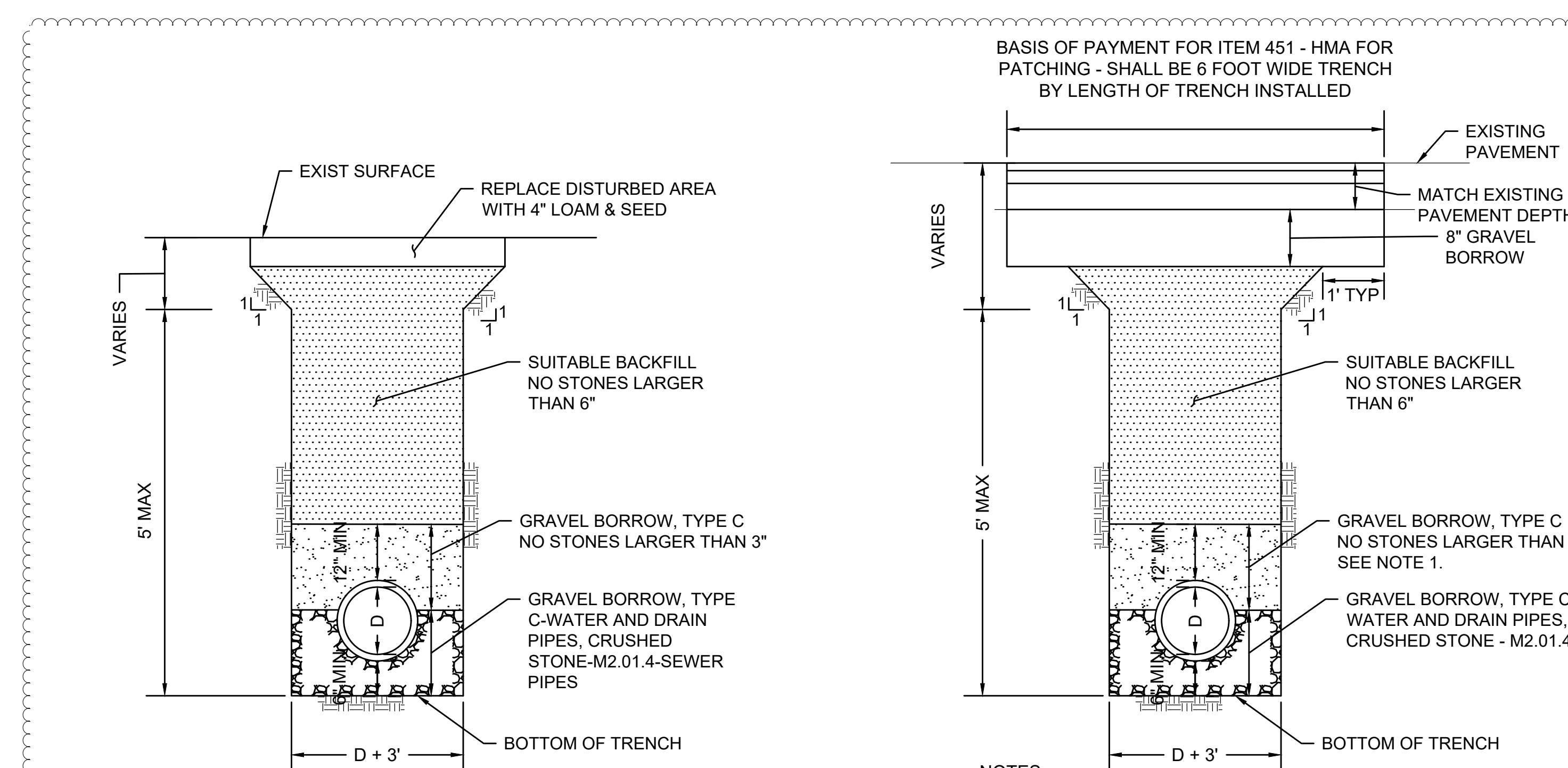


CONDUIT IN SIDEWALK

SCALE: N.T.S.

DWG: TRENCH-03

DATE: MARCH 2013



TRENCH DETAIL IN GRASS

SCALE: N.T.S.

DWG: TRENCH-05

DATE: AUGUST 2018

TRENCH DETAIL IN PAVEMENT AREAS

SCALE: N.T.S.

DATE: AUGUST 2018

NOTES:
1. IF THE IN-SITU MATERIAL MEETS THIS REQUIREMENT, IT IS ACCEPTABLE FOR USE AS BACKFILL MATERIAL.