

MASSACHUSETTS DEPARTMENT OF TRANSPORTATION HIGHWAY DIVISION

**MARION-WAREHAM
WAREHAM RD/MARION RD (US 6)
OVER WEWEANTIC RIVER**

STATE	FED. AID PROJ. NO.	SHEET NO.	TOTAL SHEETS
MA	-	1	56

PROJECT FILE NO. 605311
TITLE SHEET & INDEX

PLAN AND PROFILE OF
U.S. ROUTE 6 (WAREHAM STREET & MARION ROAD)
(BRIDGE NO. M-05-001=W-06-013 & W-06-016)

IN THE CITY/TOWN OF
MARION & WAREHAM
PLYMOUTH COUNTY

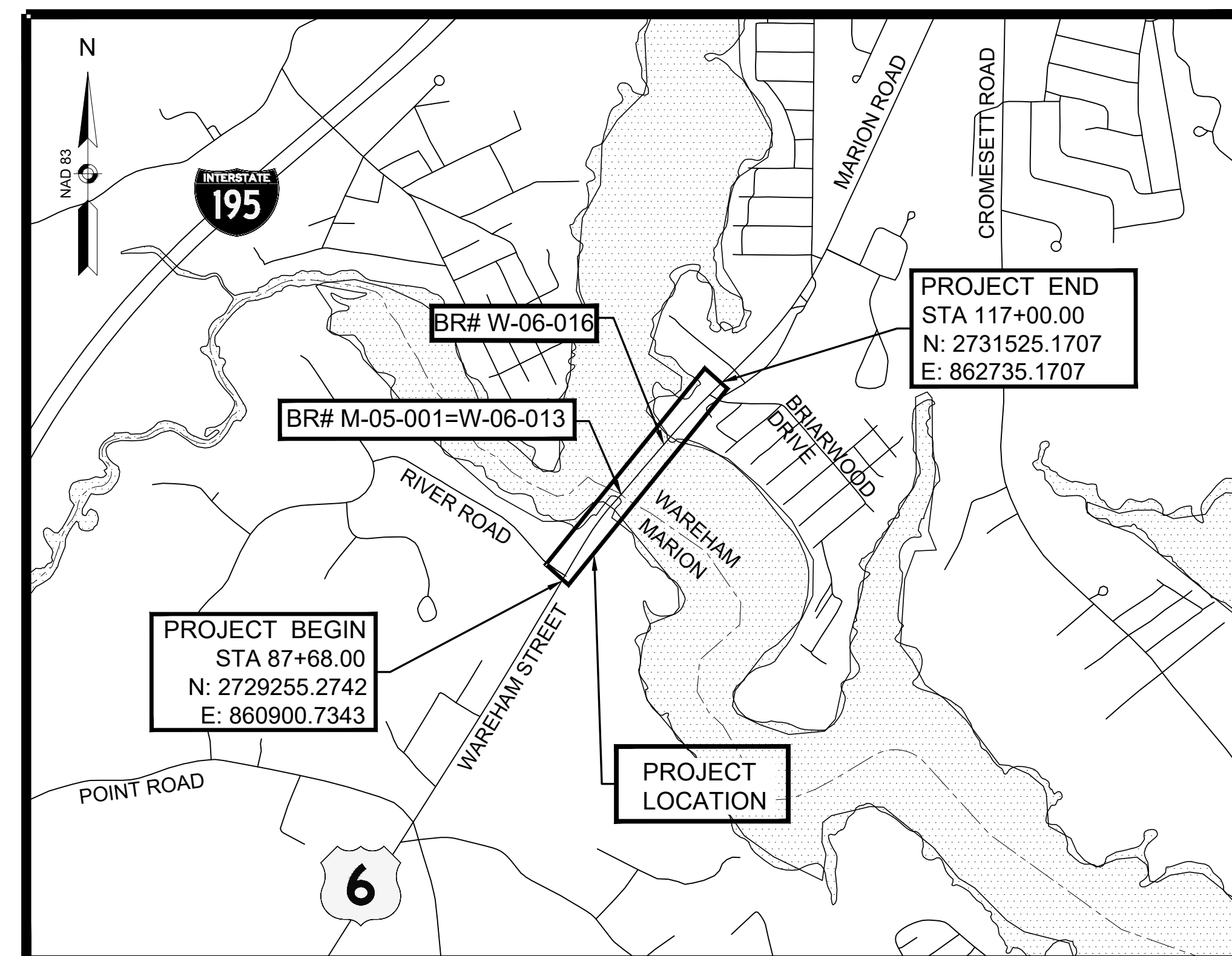
FEDERAL AID PROJECT NO.

BTC SUBMITTAL

THESE PLANS ARE SUPPLEMENTED BY THE OCTOBER 2017 CONSTRUCTION STANDARD DETAILS, THE 2015 OVERHEAD SIGNAL STRUCTURE AND FOUNDATION DRAWINGS, MASSDOT TRAFFIC MANAGEMENT PLANS AND DETAIL DRAWINGS, THE 1990 STANDARD DRAWINGS FOR LIGHTING, AND THE LATEST EDITION OF THE AMERICAN STANDARD FOR NURSERY STOCK.

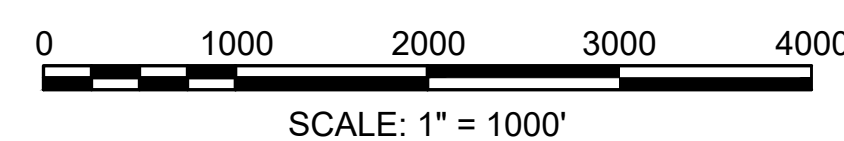
INDEX

SHEET NO.	DESCRIPTION
1	TITLE SHEET & INDEX
2	LEGEND & ABBREVIATIONS
3	GENERAL NOTES
4	KEY PLAN
5 - 6	SURVEY CONTROL PLAN
7 - 8	ALIGNMENT PLAN
9 - 14	TYPICAL SECTIONS
15 - 16	CRITICAL SECTIONS
17 - 20	CONSTRUCTION DETAILS
21 - 27	CONSTRUCTION PLANS
28 - 33	PROFILES
34 - 40	DRAINAGE & UTILITY PLANS
41 - 47	PAVEMENT MARKING & SIGNING PLANS
47A - 47B	TRAFFIC SIGNAL PLANS
48	TRAFFIC SIGN SUMMARY SHEET
49 - 56	TEMPORARY TRAFFIC CONTROL PLANS



DESIGN DESIGNATION - (U.S. ROUTE 6)

DESIGN SPEED	55 MPH
ADT (2024)	9,800
ADT (2064)	11,964
K	9%
D	51%
T (PEAK HOUR)	2.45%
T (AVERAGE DAY)	2.3%
DHV	930
DDHV	450
FUNCTIONAL CLASSIFICATION	MINOR ARTERIAL



LENGTH OF PROJECT = 2,932.00 FEET = 0.555 MILES

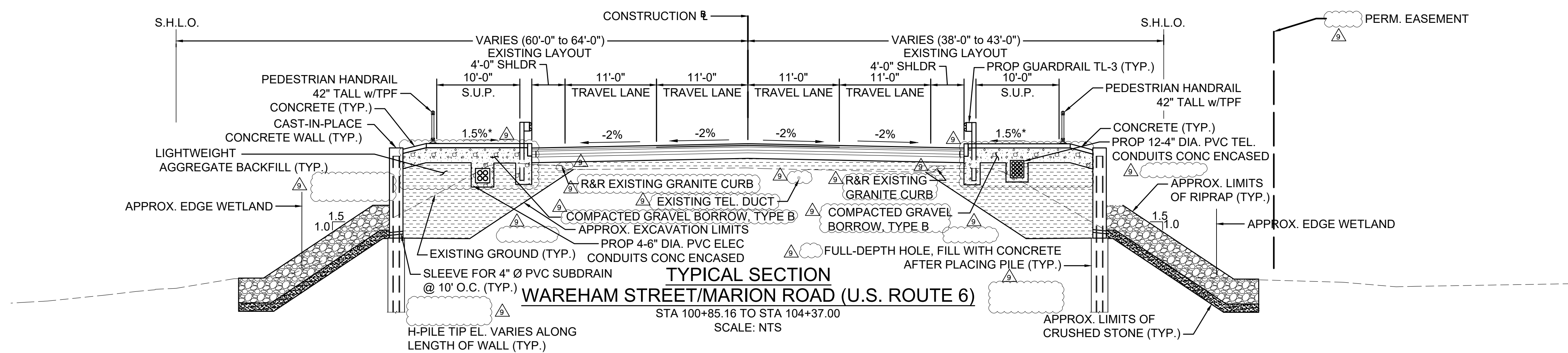
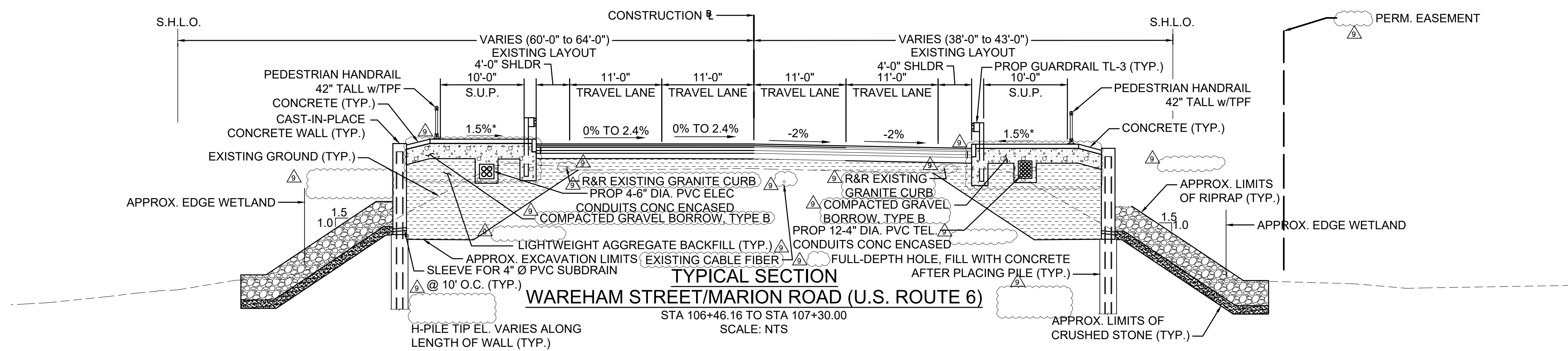
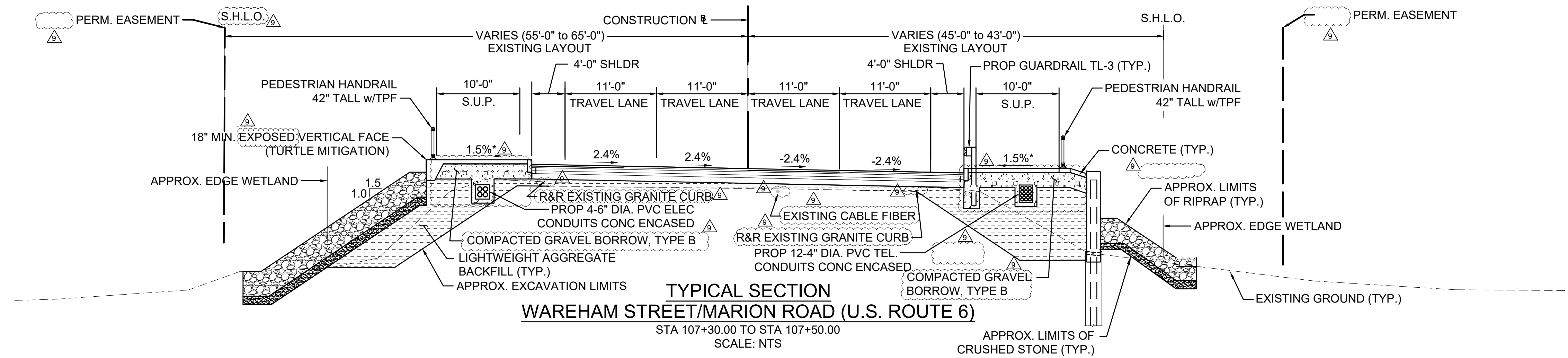
DATE	DESCRIPTION
DECEMBER 9, 2024	ADDENDUM 9 - RESPONSE TO QUESTIONS/COMMENTS
USE ONLY PRINTS OF LATEST DATE	

12/21/2021	25% DESIGN SUBMISSION	A
DATE	DESCRIPTION	REV #
APPROVED		
PLANS PREPARED BY 100 HIGH STREET, BOSTON, MA 02110		
CHIEF ENGINEER		DATE

**MARION-WAREHAM
WAREHAM RD/MARION RD (US 6)
OVER WEWEANTIC RIVER**

STATE	FED. AID PROJ. NO.	SHEET NO.	TOTAL SHEETS
MA	-	12	56
PROJECT FILE NO.		605311	

TYPICAL SECTIONS 4 OF 6



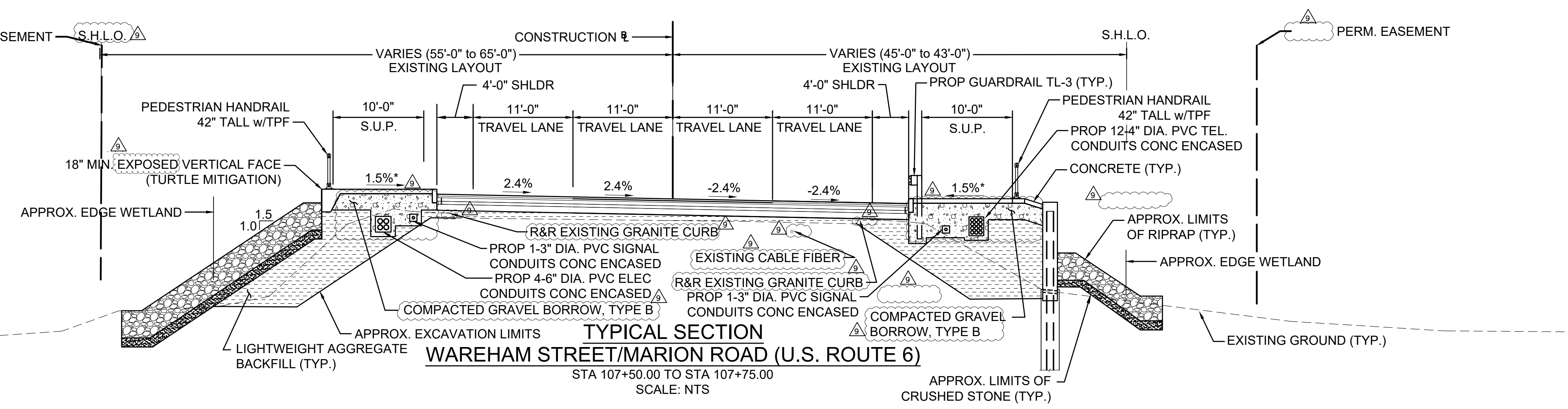
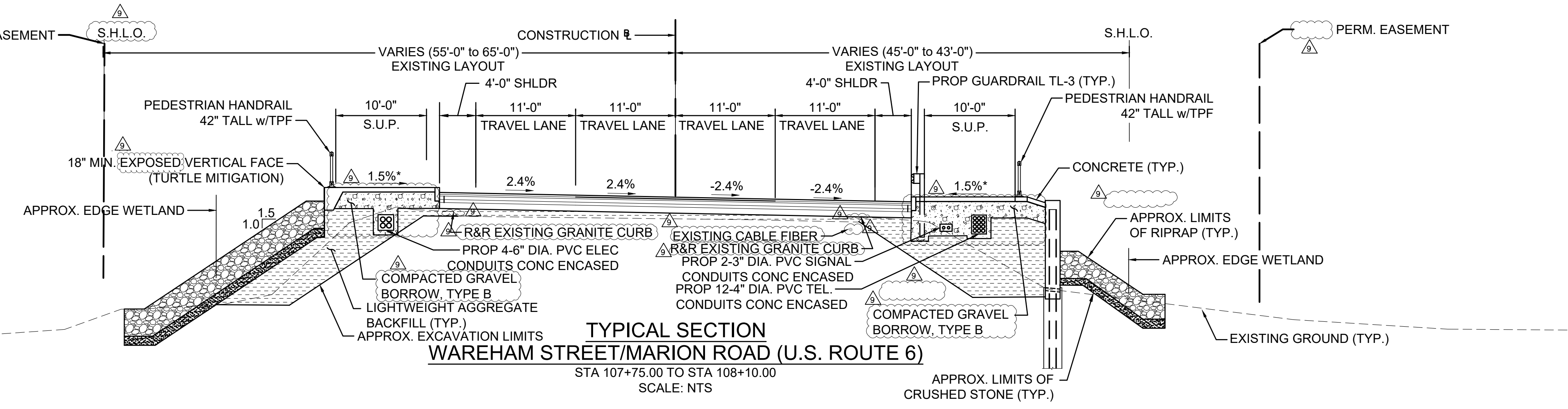
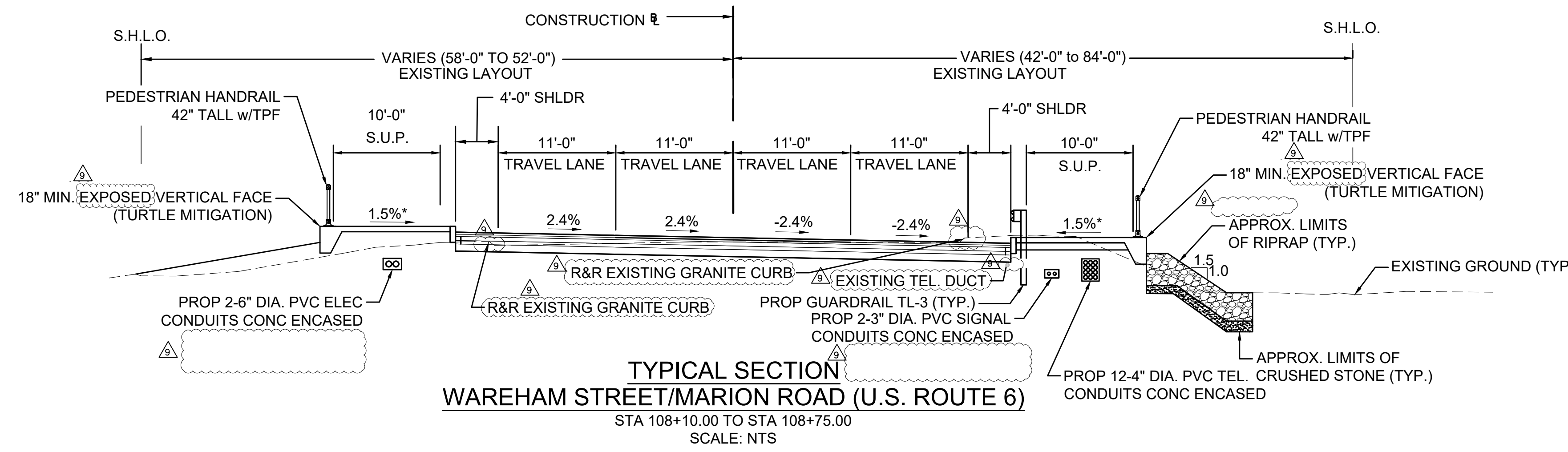
DATE	DESCRIPTION
DECEMBER 9, 2024	ADDENDUM 9 - RESPONSE TO QUESTIONS/COMMENTS
USE ONLY PRINTS OF LATEST DATE	

605311_HD(TYPICAL SECTIONS).DWG Plotted on 9-Dec-24

**MARION-WAREHAM
WAREHAM RD/MARION RD (US 6)
OVER WEWEANTIC RIVER**

STATE	FED. AID PROJ. NO.	SHEET NO.	TOTAL SHEETS
MA	-	13	56
PROJECT FILE NO. 605311			

TYPICAL SECTIONS 5 OF 6



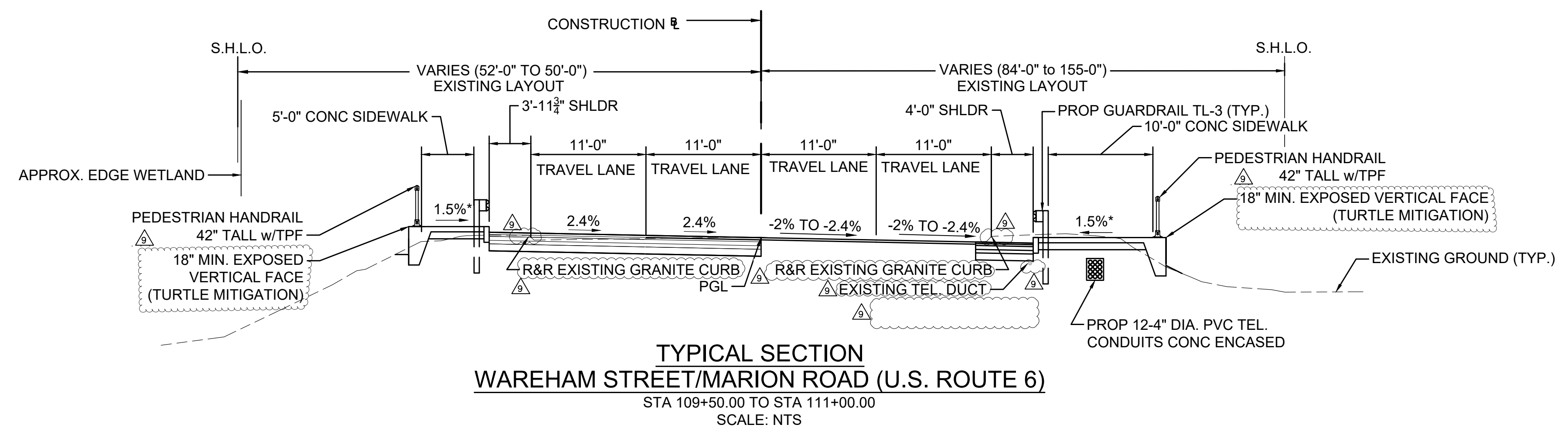
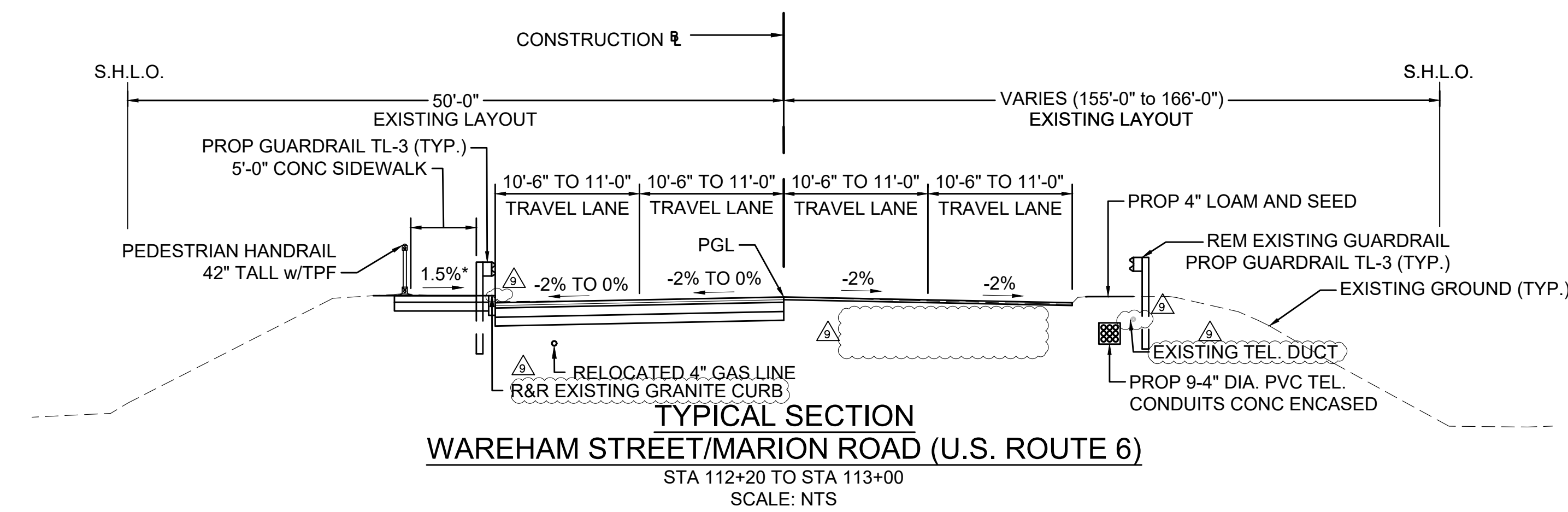
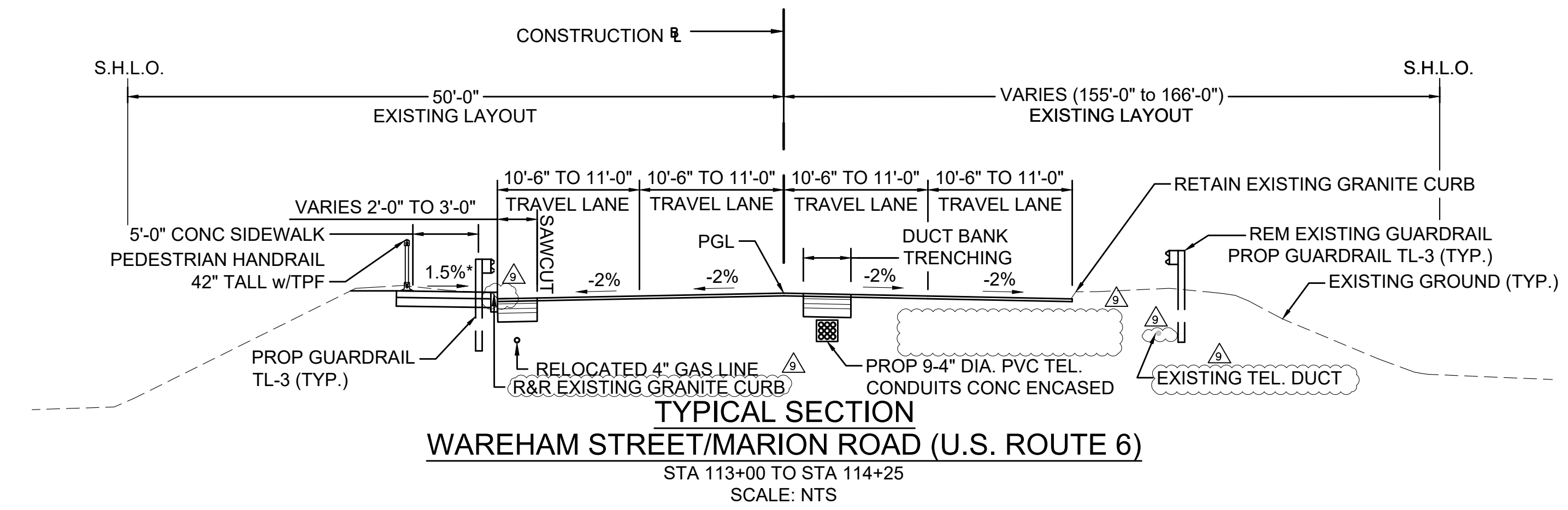
DATE	DESCRIPTION
DECEMBER 9, 2024	ADDENDUM 9 - RESPONSE TO QUESTIONS/COMMENTS
USE ONLY PRINTS OF LATEST DATE	

605311_HD(TYPICAL SECTIONS).DWG Plotted on 9-Dec-24

**MARION-WAREHAM
WAREHAM RD/MARION RD (US 6)
OVER WEWEANTIC RIVER**

STATE	FED. AID PROJ. NO.	SHEET NO.	TOTAL SHEETS
MA	-	14	56
PROJECT FILE NO.		605311	

TYPICAL SECTIONS 6 OF 6

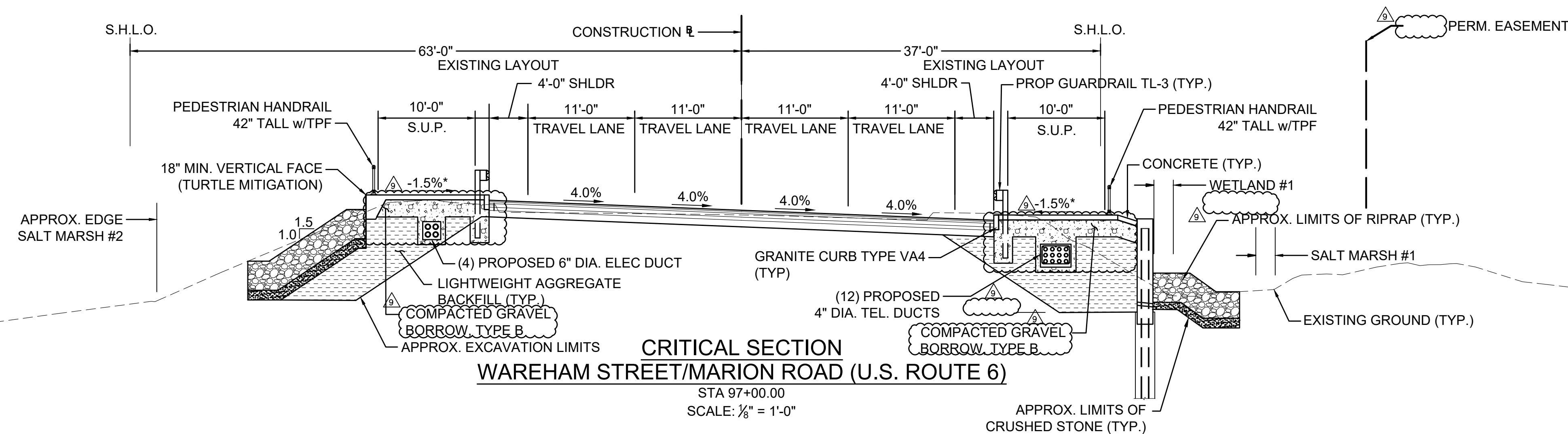
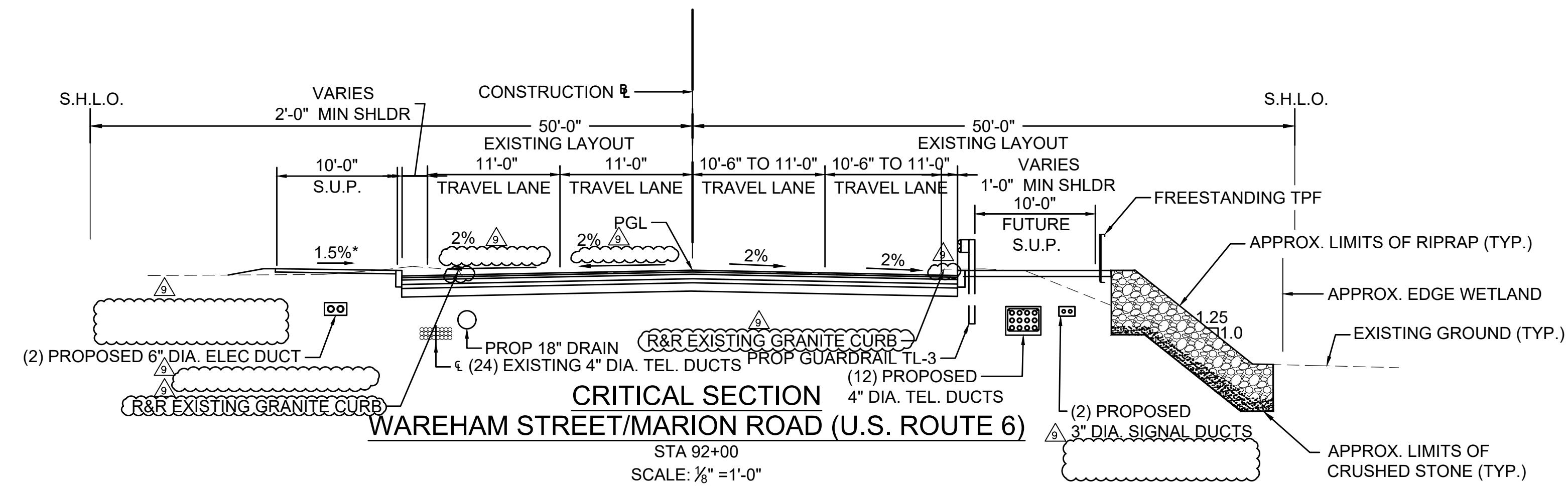


DATE	DESCRIPTION
DECEMBER 9, 2024	ADDENDUM 9 - RESPONSE TO QUESTIONS/COMMENTS
USE ONLY PRINTS OF LATEST DATE	

**MARION-WAREHAM
WAREHAM RD/MARION RD (US 6)
OVER WEWEANTIC RIVER**

STATE	FED. AID PROJ. NO.	SHEET NO.	TOTAL SHEETS
MA	-	15	56
PROJECT FILE NO.		605311	

CRITICAL SECTIONS 1 OF 2

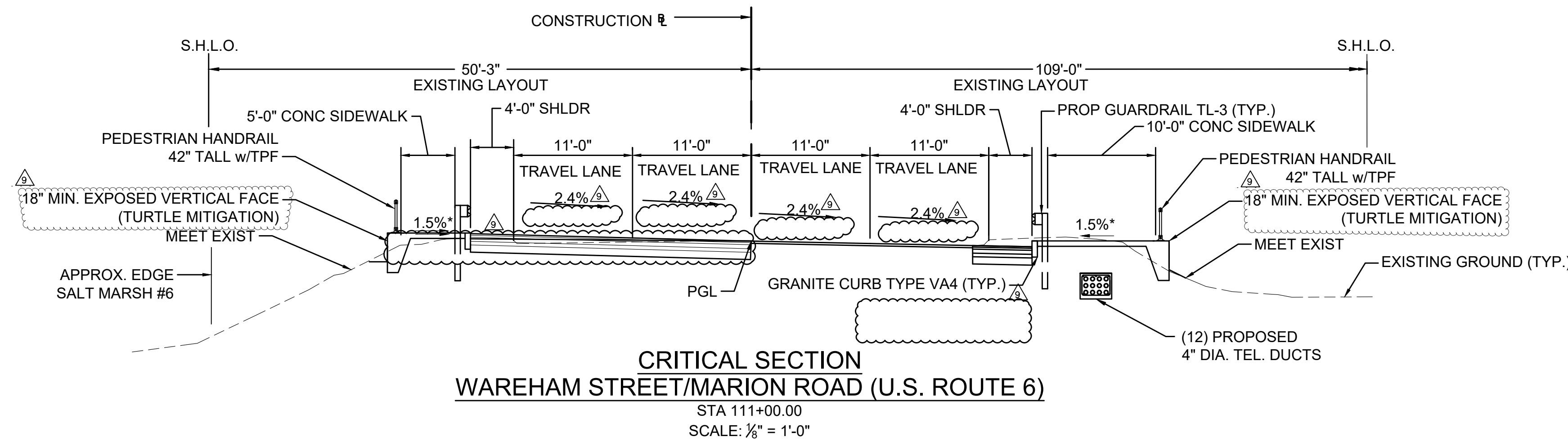
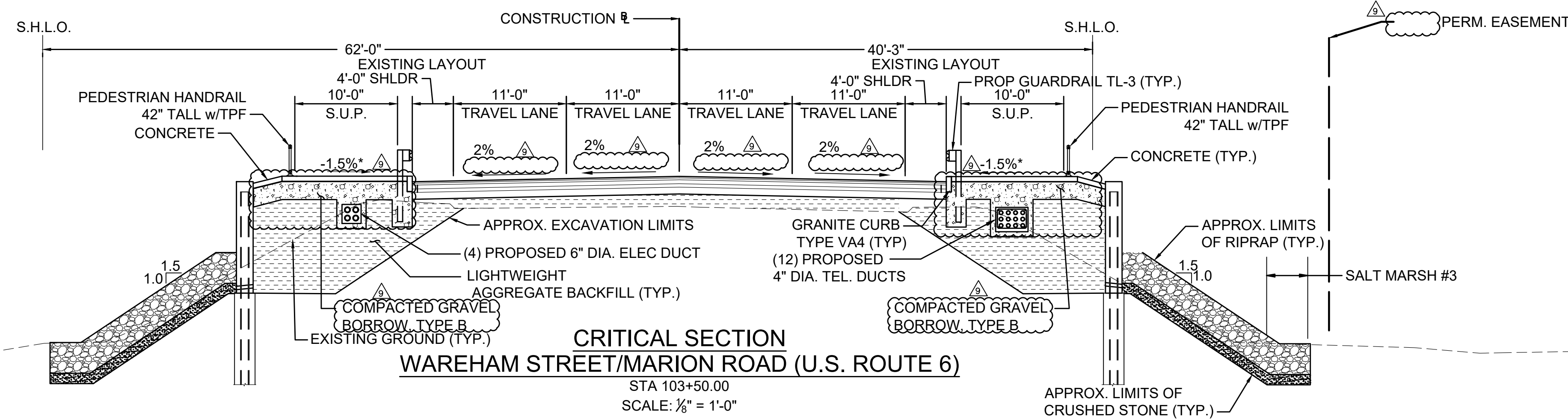


DATE	DESCRIPTION
DECEMBER 9, 2024	ADDENDUM 9 - RESPONSE TO QUESTIONS/COMMENTS
USE ONLY PRINTS OF LATEST DATE	

**MARION-WAREHAM
WAREHAM RD/MARION RD (US 6)
OVER WEWEANTIC RIVER**

STATE	FED. AID PROJ. NO.	SHEET NO.	TOTAL SHEETS
MA	-	16	56
PROJECT FILE NO.		605311	

CRITICAL SECTIONS 2 OF 2



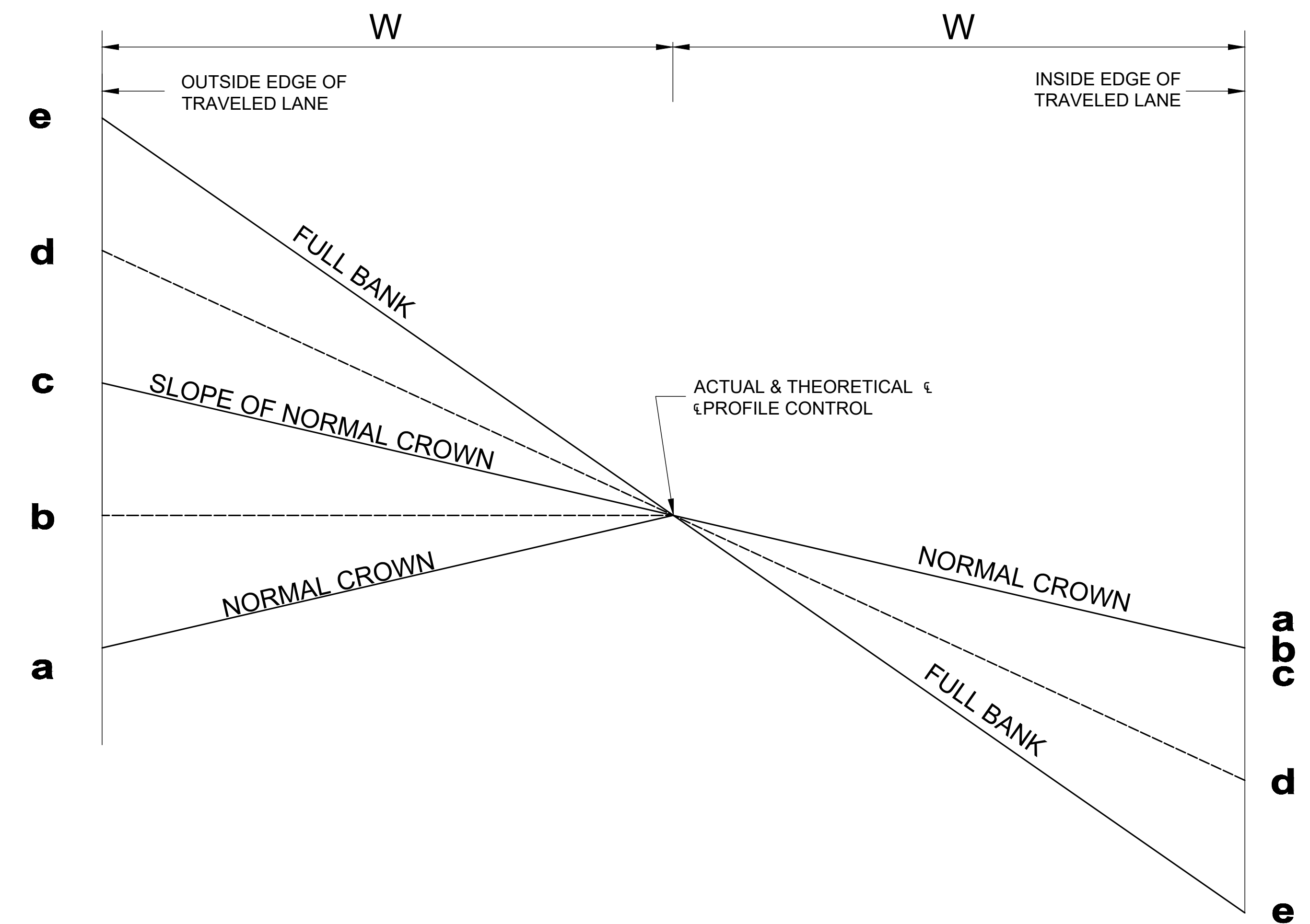
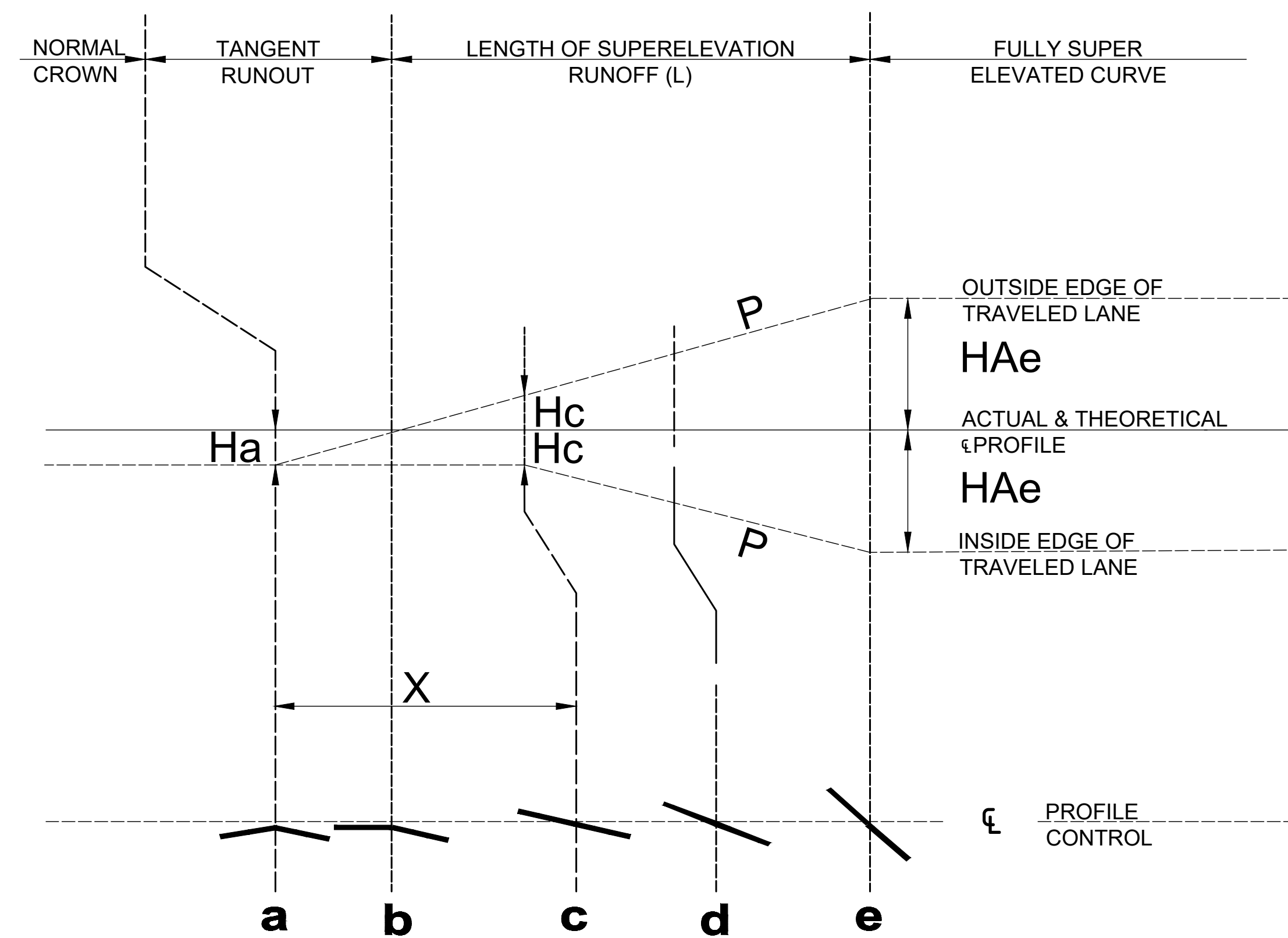
DATE	DESCRIPTION
DECEMBER 9, 2024	ADDENDUM 9 - RESPONSE TO QUESTIONS/COMMENTS
USE ONLY PRINTS OF LATEST DATE	

**MARION-WAREHAM
WAREHAM RD/MARION RD (US 6)
OVER WEWEANTIC RIVER**

STATE	FED. AID PROJ. NO.	SHEET NO.	TOTAL SHEETS
MA	-	20	56
PROJECT FILE NO. 605311			

**CONSTRUCTION DETAILS
SHEET 4 OF 4**

SUPERELEVATION BANKING METHOD - CROWNED PAVEMENT REVOLVED ABOUT CENTERLINE



4% SUPER ELEVATION TRANSITION STATIONS

ENTRY TO CURVE		EXIT FROM CURVE	
START OF TANGENT RUNOUT	STA 92+36	START OF RUNOFF	STA 98+64
START RUNOFF	STA 93+13	END OF RUNOFF	STA 100+17
END OF RUNOFF	STA 94+66	END OF TANGENT RUNOUT	STA 100+94

2.4% SUPER ELEVATION TRANSITION STATIONS

ENTRY TO CURVE		EXIT FROM CURVE	
START OF TANGENT RUNOUT	STA 105+72	START OF RUNOFF	STA 111+30
START RUNOFF	STA 106+49	END OF RUNOFF	STA 112+22
END OF RUNOFF	STA 107+41	END OF TANGENT RUNOUT	STA 112+99

DECEMBER 9, 2024	ADDENDUM 9 - RESPONSE TO QUESTIONS/COMMENTS
DATE	DESCRIPTION
USE ONLY PRINTS OF LATEST DATE	

HIGHWAY GUARD DETAILS
 STA 94+03.31 (RT) TO STA 98+79.06 (RT) ITEM 620.13
 STA 94+03.31 (LT) TO STA 98+79.10 (LT) ITEM 620.13
 STA 98+79.06 (RT) TO STA 99+12.81 (RT) ITEM 628.24
 STA 98+79.10 (LT) TO STA 99+12.85 (LT) ITEM 628.24

TRAFFIC SIGNAL CONDUIT
 NONE

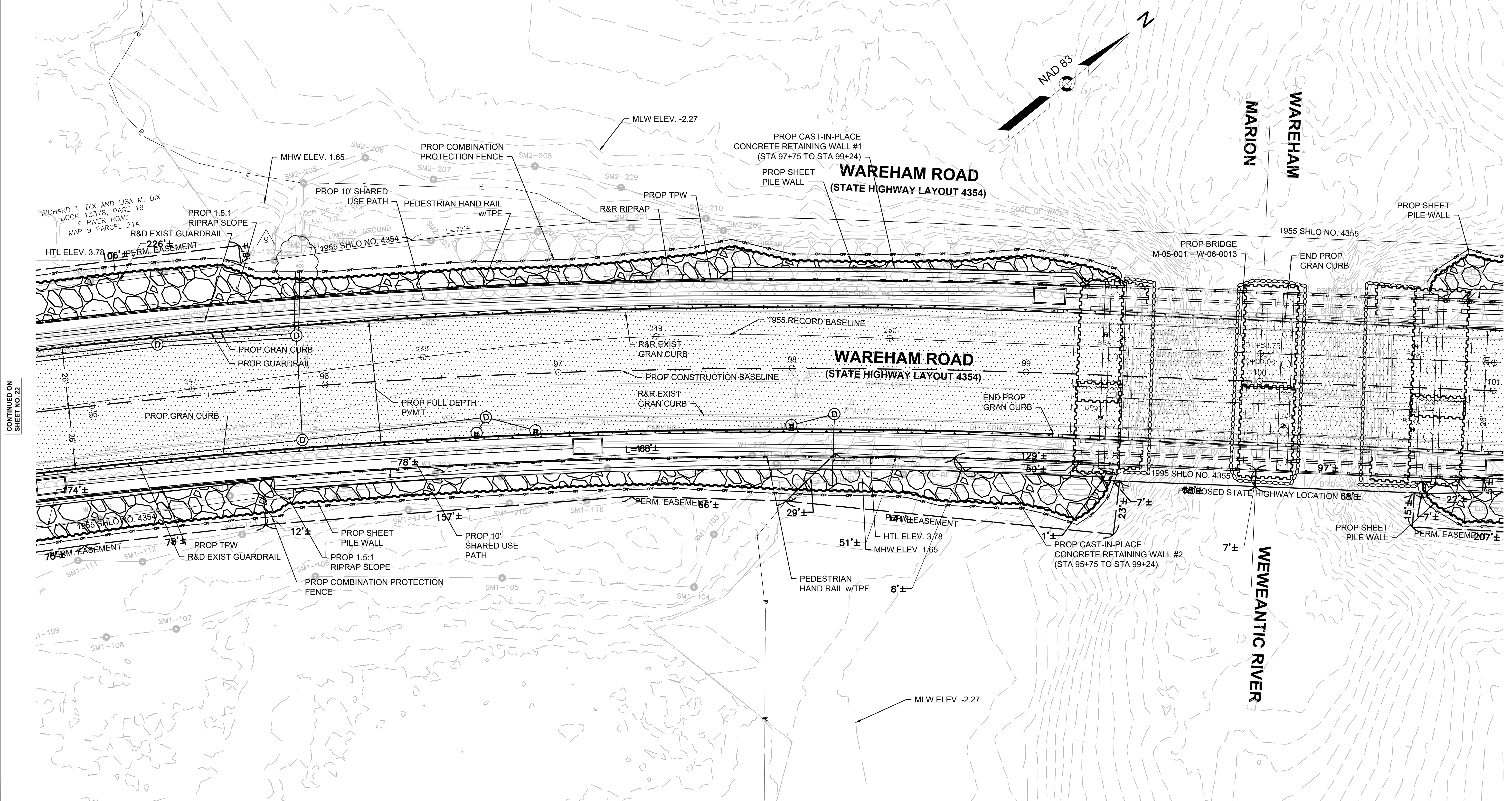
WATER SUPPLY ALTERATIONS
 NONE

DRAINAGE DETAILS
 SEE SHEETS 34 - 40.

**MARION-WAREHAM
 WAREHAM RD/MARION RD (US 6)
 OVER WEWEANTIC RIVER**

STATE	FED. AID PROJ. NO.	SHEET NO.	TOTAL SHEETS
MA	-	23	56
PROJECT FILE NO.		605311	

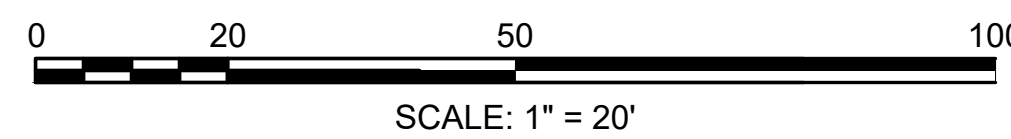
**CONSTRUCTION PLANS
 SHEET 3 OF 7**



CONTINUED ON
 SHEET NO. 22

CONTINUED ON
 SHEET NO. 24

NOTE: FOR PROFILE SEE SHEET NO. 29



DATE	DESCRIPTION
DECEMBER 9, 2024	ADDENDUM 9 - RESPONSE TO QUESTIONS/COMMENTS
USE ONLY PRINTS OF LATEST DATE	

HIGHWAY GUARD DETAILS

STA 106+58.16 (RT) TO STA 106+91.91 (RT) ITEM 628.24
 STA 106+58.16 (LT) TO STA 106+91.91 (LT) ITEM 628.24
 STA 106+91.91 (RT) TO STA 107+29.41 (RT) ITEM 627.83
 STA 106+91.91 (LT) TO STA 107+29.41 (LT) ITEM 627.83
 STA 107+55.03 (RT) TO STA 107+92.53 (RT) ITEM 627.83
 STA 107+92.53 (RT) TO STA 108+58.23 (RT) ITEM 620.13
 STA 108+58.23 (RT) TO STA 108+95.73 (RT) ITEM 627.83
 STA 109+43.12 (RT) TO STA 109+80.62 (RT) ITEM 627.83
 STA 109+43.61 (LT) TO STA 109+81.11 (LT) ITEM 627.83
 STA 109+81.11 (RT) TO STA 110+71.85 (RT) ITEM 620.13
 STA 109+81.11 (LT) TO STA 113+87.52 (LT) ITEM 620.13
 STA 110+71.85 (RT) TO STA 111+09.35 (RT) ITEM 627.83

TRAFFIC SIGNAL CONDUIT

NONE

WATER SUPPLY ALTERATIONS

NONE

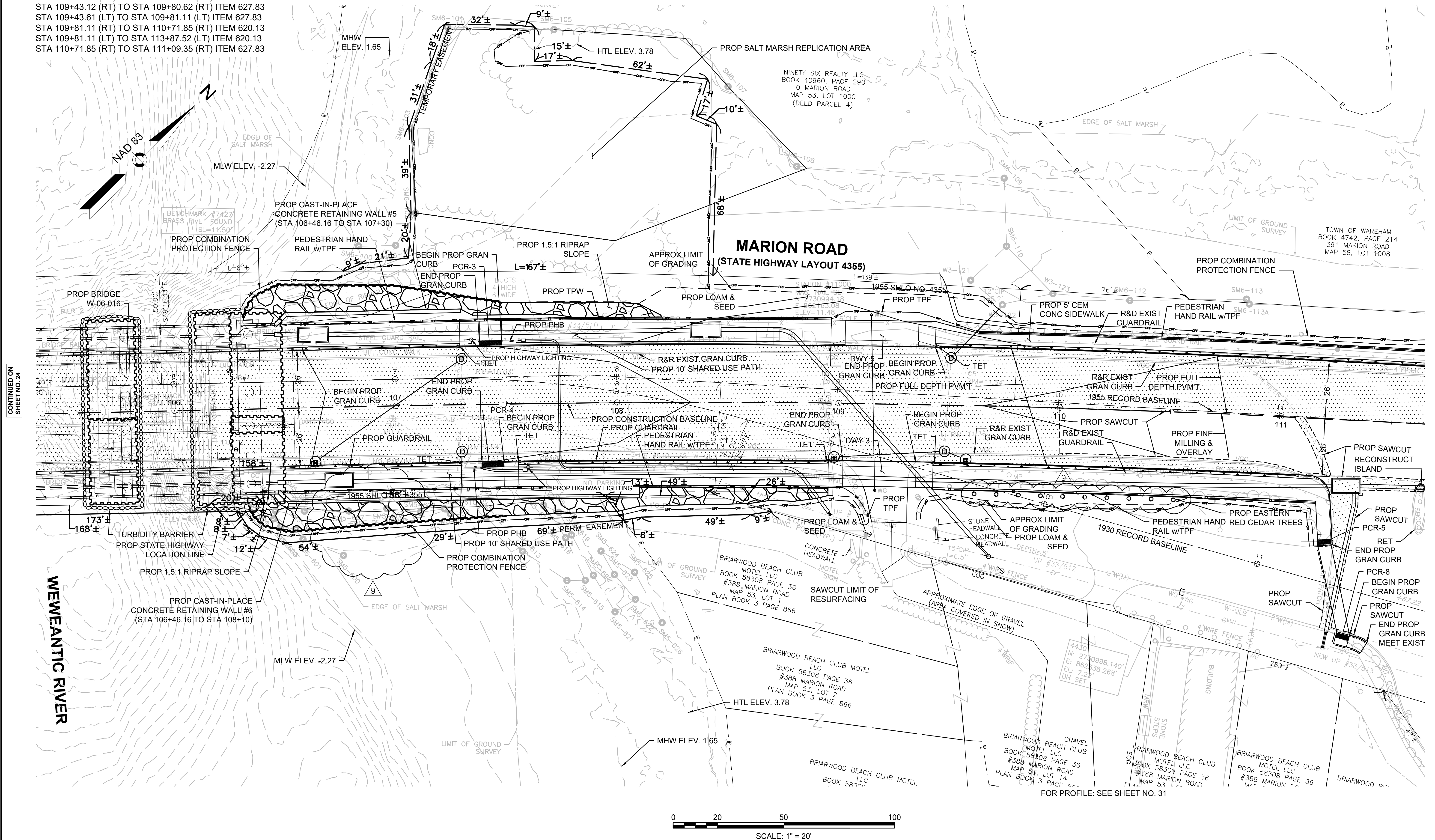
DRAINAGE DETAILS

SEE SHEETS 34 - 40.

**MARION-WAREHAM
 WAREHAM RD/MARION RD (US 6)
 OVER WEWEANTIC RIVER**

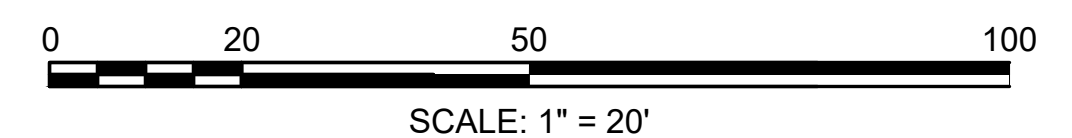
STATE	FED. AID PROJ. NO.	SHEET NO.	TOTAL SHEETS
MA	-	25	56

PROJECT FILE NO. 605311
**CONSTRUCTION PLANS
 SHEET 5 OF 7**



CONTINUED ON
 SHEET NO. 24

CONTINUED ON
 SHEET NO. 26



DATE	DESCRIPTION
DECEMBER 9, 2024	ADDENDUM 9 - RESPONSE TO QUESTIONS/COMMENTS
USE ONLY PRINTS OF LATEST DATE	

605311_HDCONSTRUCTION PLANS_ADDENDUM.DWG

HIGHWAY GUARD DETAILS

STA 109+81.11 (LT) TO STA 113+87.52 (LT) ITEM 620.13
 STA 113+87.52 (LT) TO STA 114+25.02 (LT) ITEM 627.83
 STA 112+26.72 (RT) TO STA 112+64.22 (RT) ITEM 627.83
 STA 112+64.22 (RT) TO STA 113+56.99 (RT) ITEM 620.13
 STA 113+56.99 (RT) TO STA 113+94.49 (RT) ITEM 627.83

TRAFFIC SIGNAL CONDUIT

NONE

WATER SUPPLY ALTERATIONS

NONE

DRAINAGE DETAILS

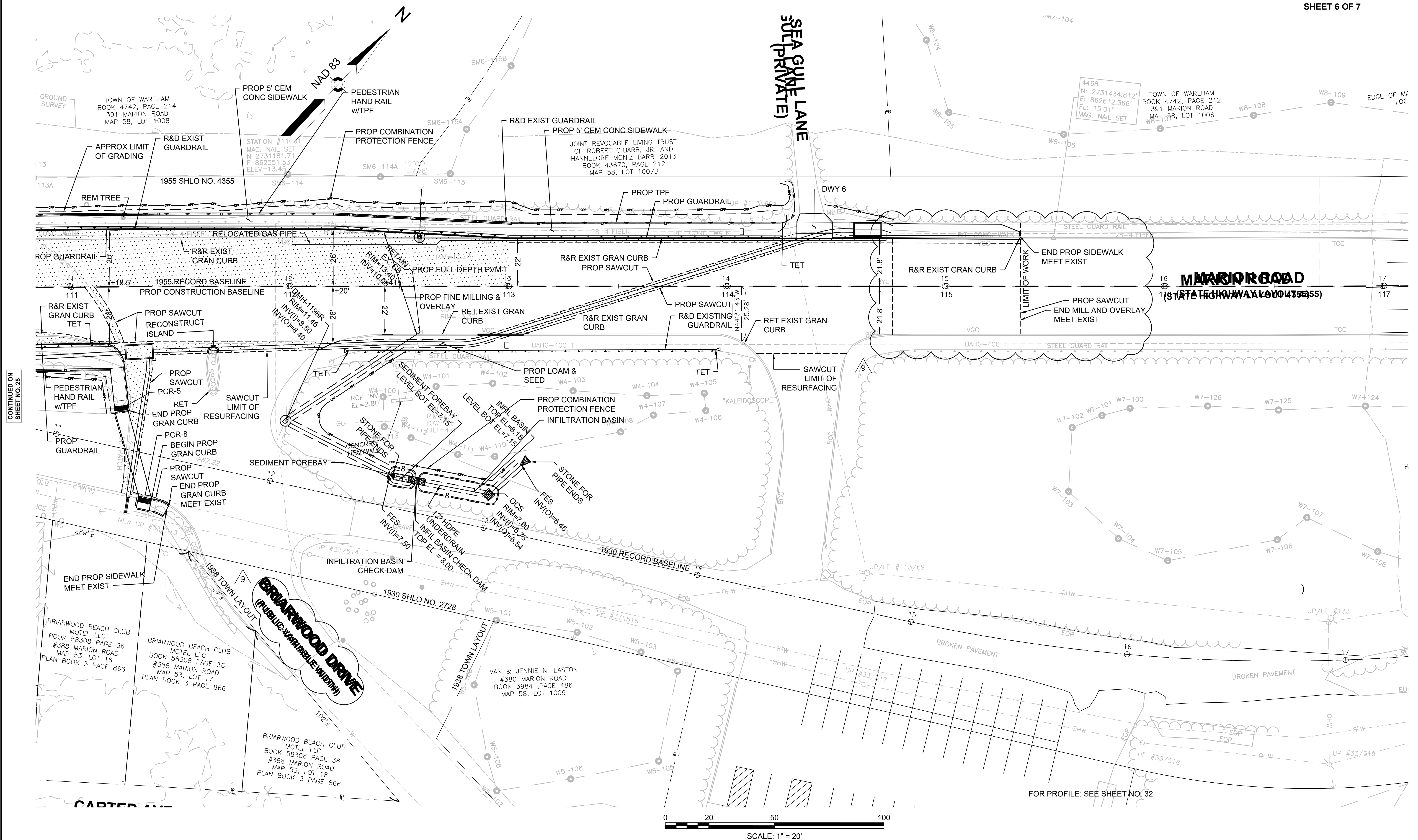
SEE SHEETS 34 - 40.

**MARION-WAREHAM
 WAREHAM RD/MARION RD (US 6)
 OVER WEWEANTIC RIVER**

STATE	FED. AID PROJ. NO.	SHEET NO.	TOTAL SHEETS
MA	-	26	56

PROJECT FILE NO. 605311

**CONSTRUCTION PLANS
 SHEET 6 OF 7**



CONTINUED ON SHEET NO. 25

CONTINUED ON SHEET NO. 27

FOR PROFILE: SEE SHEET NO. 32

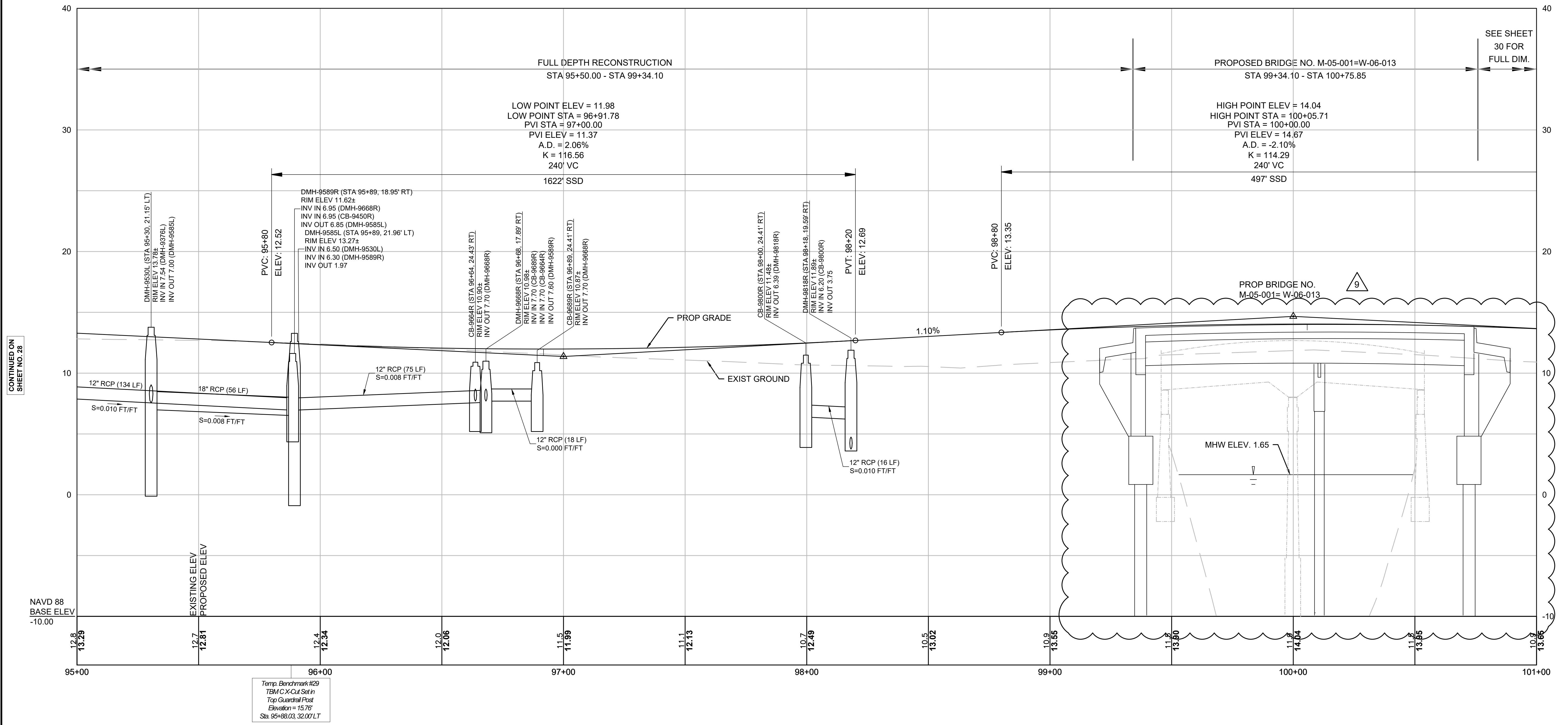
DATE	DESCRIPTION
DECEMBER 9, 2024	ADDENDUM 9 - RESPONSE TO QUESTIONS/COMMENTS
	USE ONLY PRINTS OF LATEST DATE

605311_HDC.CONSTRUCTION PLANS_ADDENDUM.DWG

**MARION-WAREHAM
WAREHAM RD/MARION RD (US 6)
OVER WEWEANTIC RIVER**

STATE	FED. AID PROJ. NO.	SHEET NO.	TOTAL SHEETS
MA	-	29	56
PROJECT FILE NO. 605311			

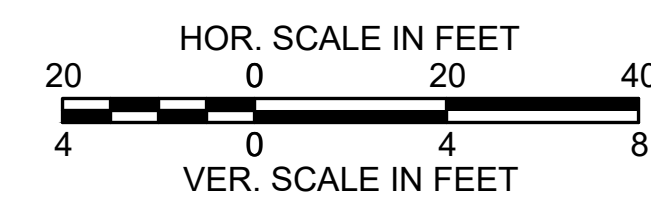
**PROFILE
SHEET 2 OF 6**



CONTINUED ON
SHEET NO. 28

CONTINUED ON
SHEET NO. 30

FOR CONSTRUCTION PLAN:
SEE SHEET NO. 22



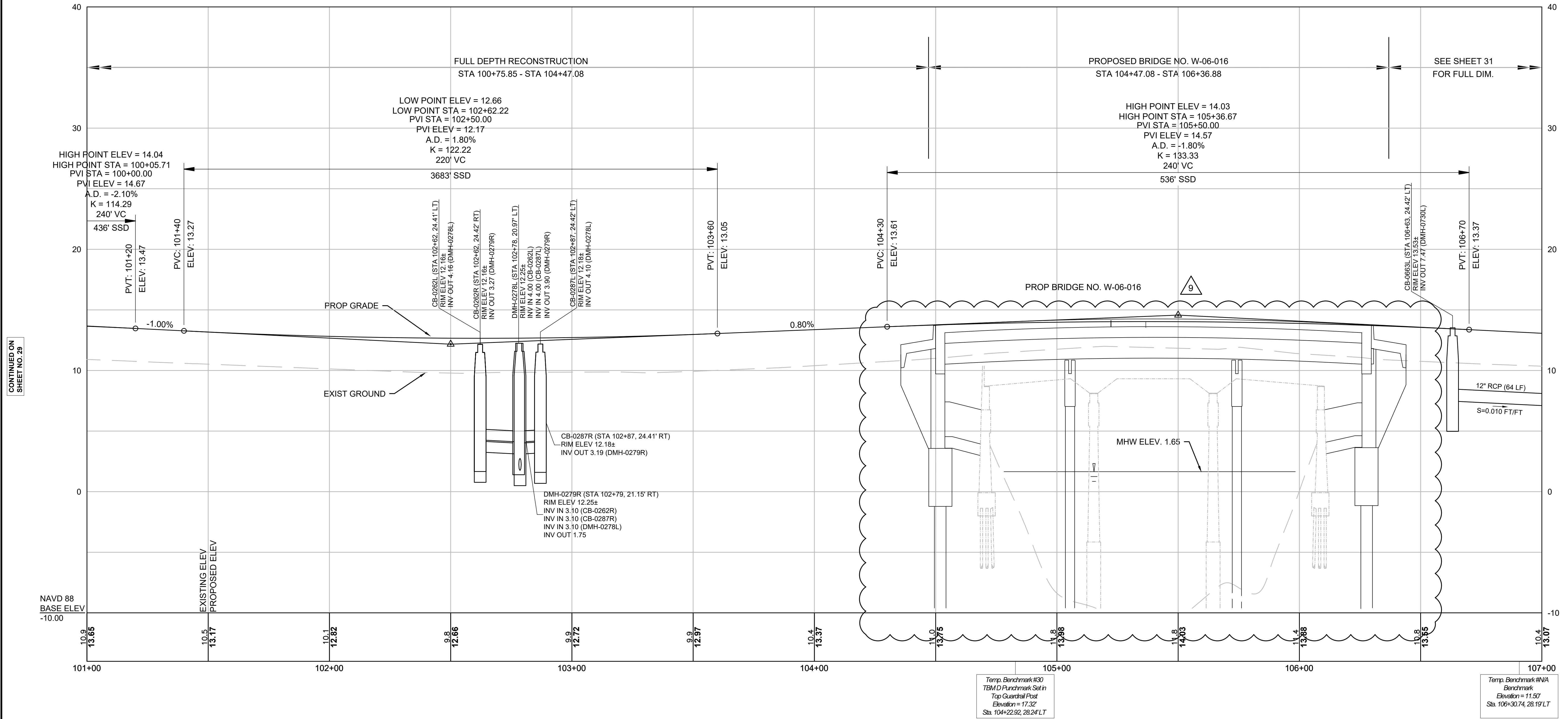
Temp. Benchmark #29
TBM C-X-Cut Set in
Top Guardrail Post
Elevation = 15.76'
Sta. 95+88.03, 32.00' LT

DATE	DESCRIPTION
DECEMBER 9, 2024	ADDENDUM 9 - RESPONSE TO QUESTIONS/COMMENTS
USE ONLY PRINTS OF LATEST DATE	

**MARION-WAREHAM
WAREHAM RD/MARION RD (US 6)
OVER WEWEANTIC RIVER**

STATE	FED. AID PROJ. NO.	SHEET NO.	TOTAL SHEETS
MA	-	30	56
PROJECT FILE NO.		605311	

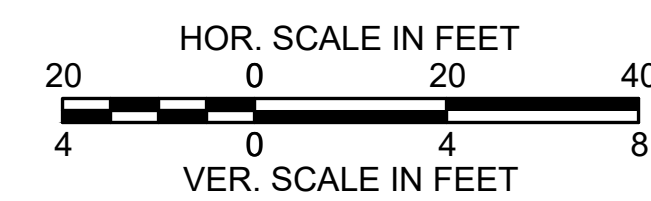
**PROFILE
SHEET 3 OF 6**



CONTINUED ON
SHEET NO. 29

CONTINUED ON
SHEET NO. 31

FOR CONSTRUCTION PLAN:
SEE SHEET NO. 24



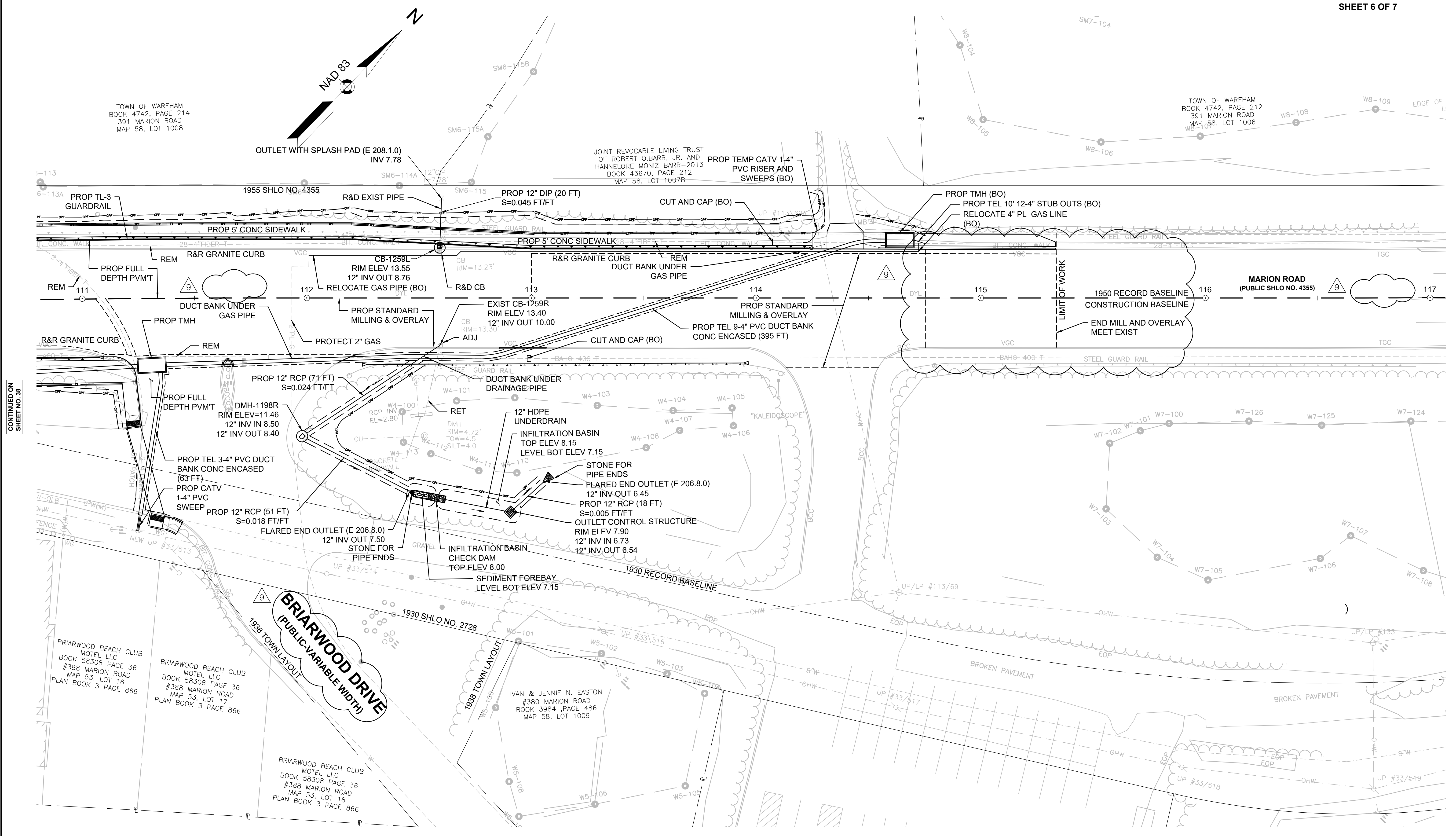
DATE	DESCRIPTION
DECEMBER 9, 2024	ADDENDUM 9 - RESPONSE TO QUESTIONS/COMMENTS
USE ONLY PRINTS OF LATEST DATE	

**MARION-WAREHAM
WAREHAM RD/MARION RD (US 6)
OVER WEWEANTIC RIVER**

STATE	FED. AID PROJ. NO.	SHEET NO.	TOTAL SHEETS
MA	-	39	56
PROJECT FILE NO. 605311			

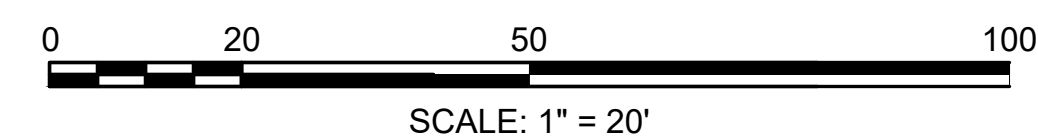
**DRAINAGE & UTILITY PLANS
SHEET 6 OF 7**

TRAFFIC SIGNAL CONDUIT NONE
WATER SUPPLY ALTERATIONS NONE
DRAINAGE DETAILS SEE BELOW



CONTINUED ON SHEET NO. 38

CONTINUED ON SHEET NO. 40



FOR CONSTRUCTION PLAN:
SEE SHEET NO. 26

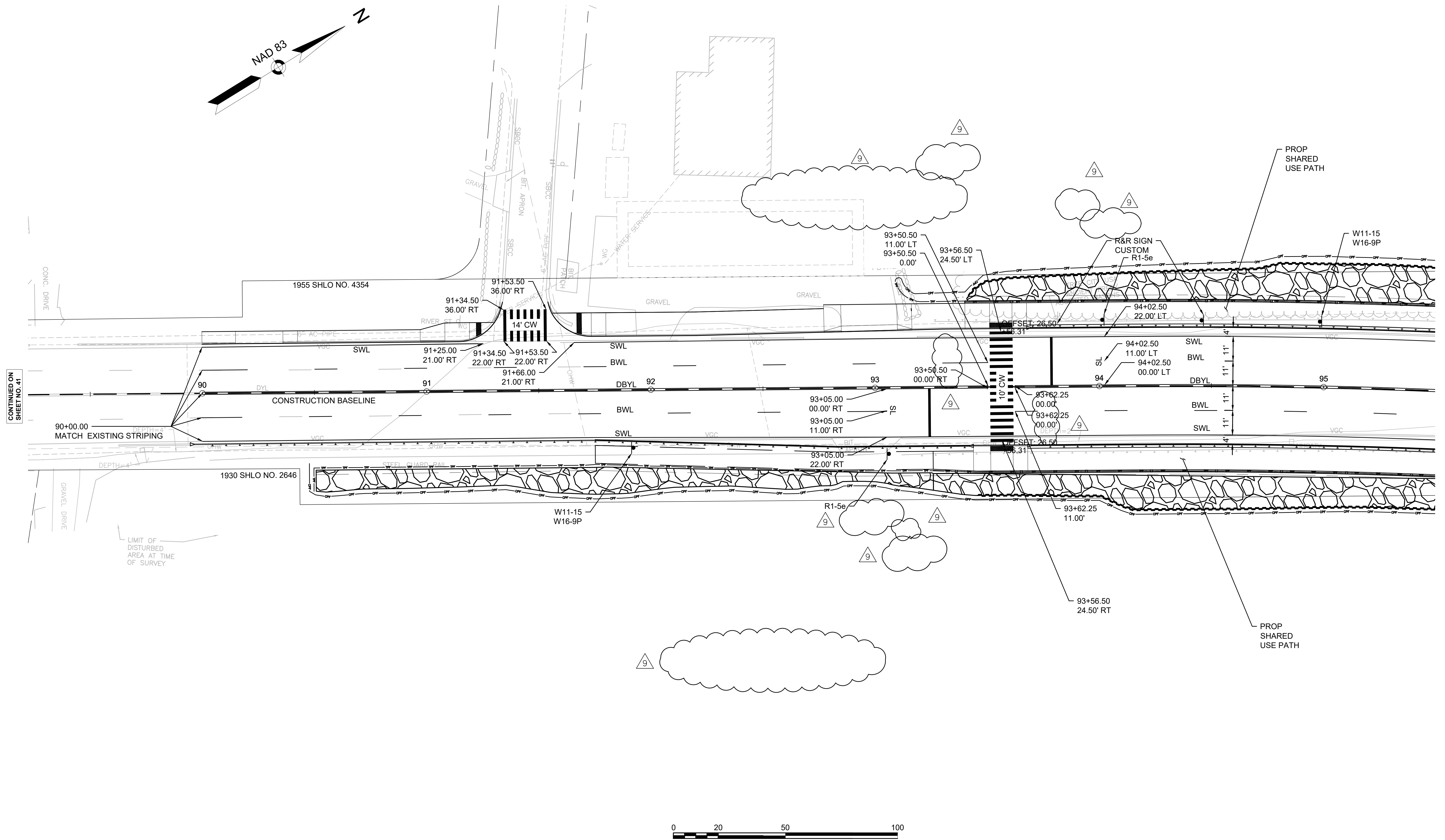
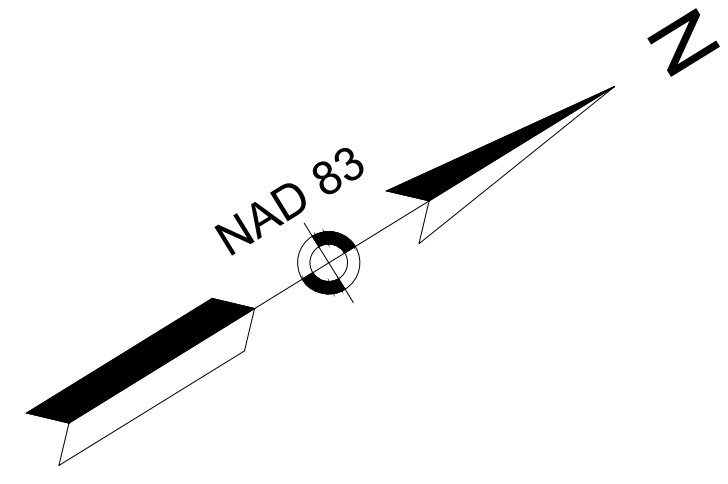
DATE	DESCRIPTION
DECEMBER 9, 2024	ADDENDUM 9 - RESPONSE TO QUESTIONS/COMMENTS
USE ONLY PRINTS OF LATEST DATE	

605311_LUT(DRAINAGE & UTILITY PLANS).DWG

**MARION-WAREHAM
WAREHAM RD/MARION RD (US 6)
OVER WEWEANTIC RIVER**

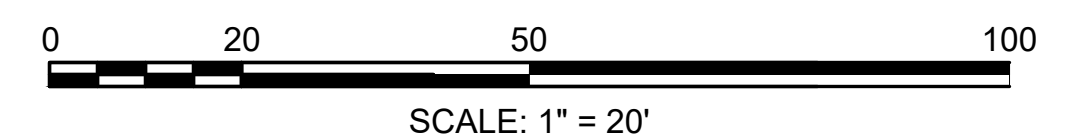
STATE	FED. AID PROJ. NO.	SHEET NO.	TOTAL SHEETS
MA	-	42	56
PROJECT FILE NO.		605311	

**PAVEMENT MARKING & SIGNING PLANS
SHEET 2 OF 7**



CONTINUED ON SHEET NO. 41

CONTINUED ON SHEET NO. 43



DATE	DESCRIPTION
DECEMBER 9, 2024	ADDENDUM 9 - RESPONSE TO QUESTIONS/COMMENTS
USE ONLY PRINTS OF LATEST DATE	

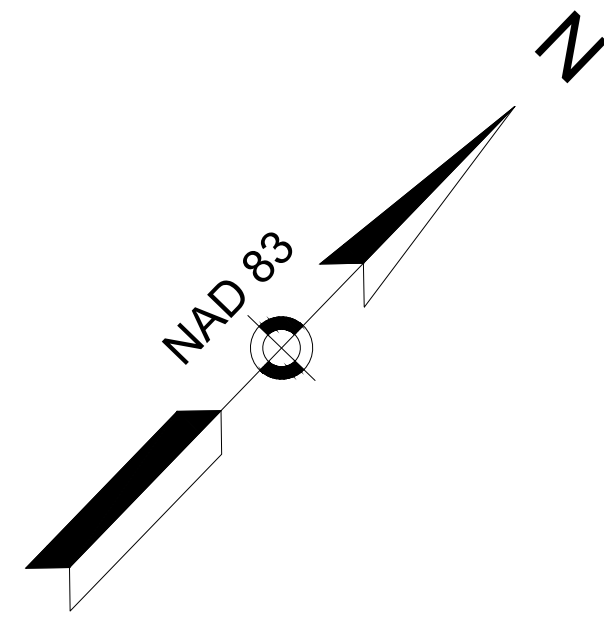


605311_TPR(P)MT MKK & SIGN PLANS.DWG Plotted on 9-Dec-24

**MARION-WAREHAM
WAREHAM RD/MARION RD (US 6)
OVER WEWEANTIC RIVER**

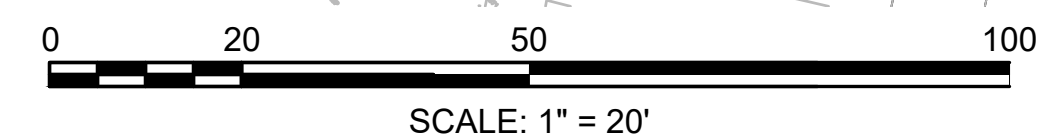
STATE	FED. AID PROJ. NO.	SHEET NO.	TOTAL SHEETS
MA	-	46	56
PROJECT FILE NO.		605311	

**PAVEMENT MARKING & SIGNING PLANS
SHEET 6 OF 7**



CONTINUED ON SHEET NO. 45

CONTINUED ON SHEET NO. 47



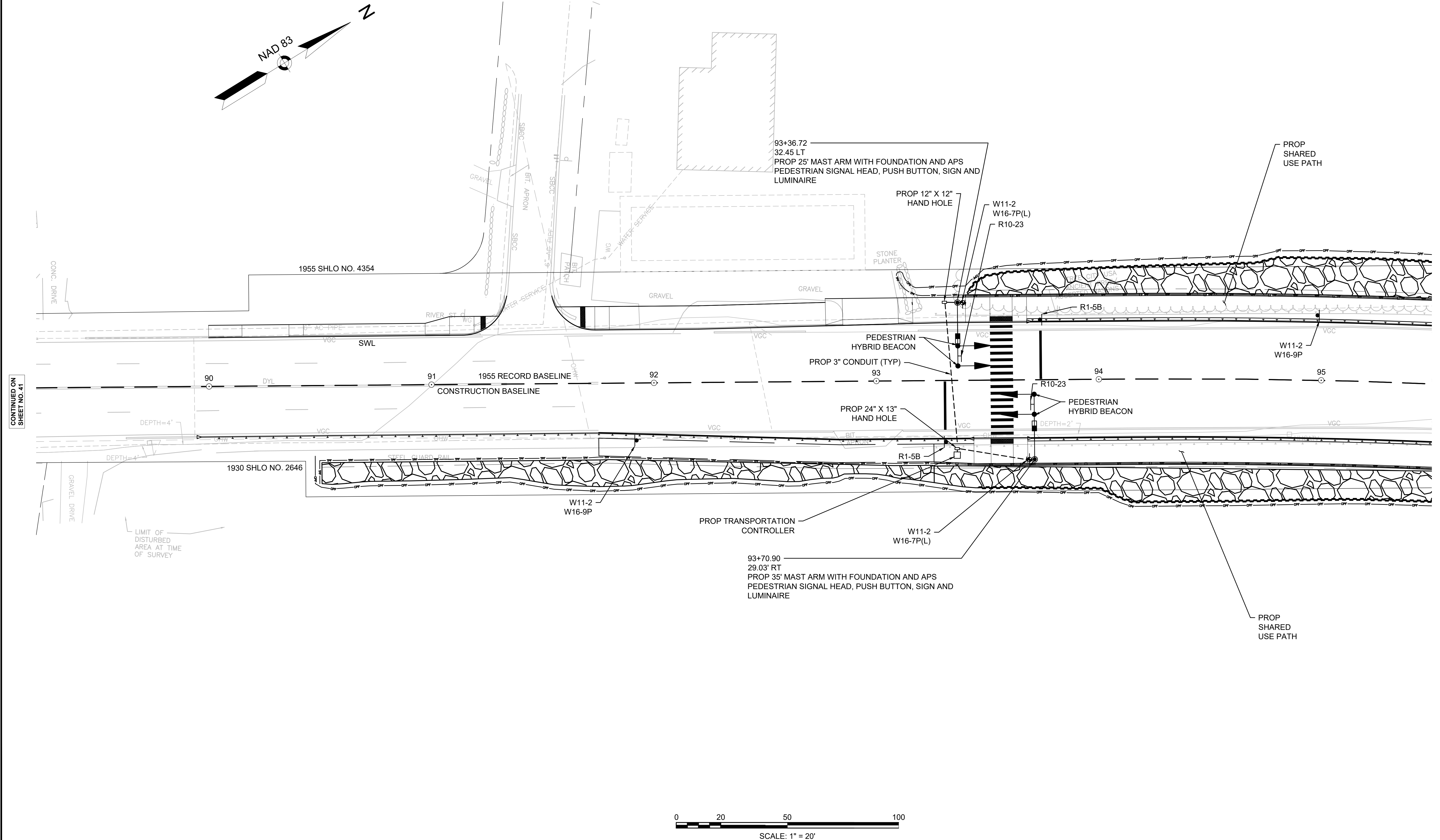
DATE	DESCRIPTION
DECEMBER 9, 2024	ADDENDUM 9 - RESPONSE TO QUESTIONS/COMMENTS
USE ONLY PRINTS OF LATEST DATE	

605311_TPR(P)MT MKK & SIGN PLANS.DWG Plotted on 9-Dec-24

**MARION-WAREHAM
WAREHAM RD/MARION RD (US 6)
OVER WEWEANTIC RIVER**

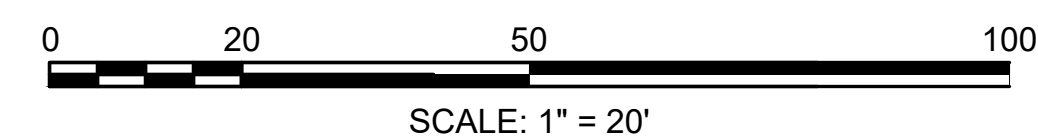
STATE	FED. AID PROJ. NO.	SHEET NO.	TOTAL SHEETS
MA	-	47A	56
PROJECT FILE NO. 605311			

**SIGNAL PLANS
SHEET 1 OF 2**



CONTINUED ON
SHEET NO. 41

CONTINUED ON
SHEET NO. 43



DATE	DESCRIPTION
DECEMBER 9, 2024	ADDENDUM 9 - RESPONSE TO QUESTIONS/COMMENTS
USE ONLY PRINTS OF LATEST DATE	

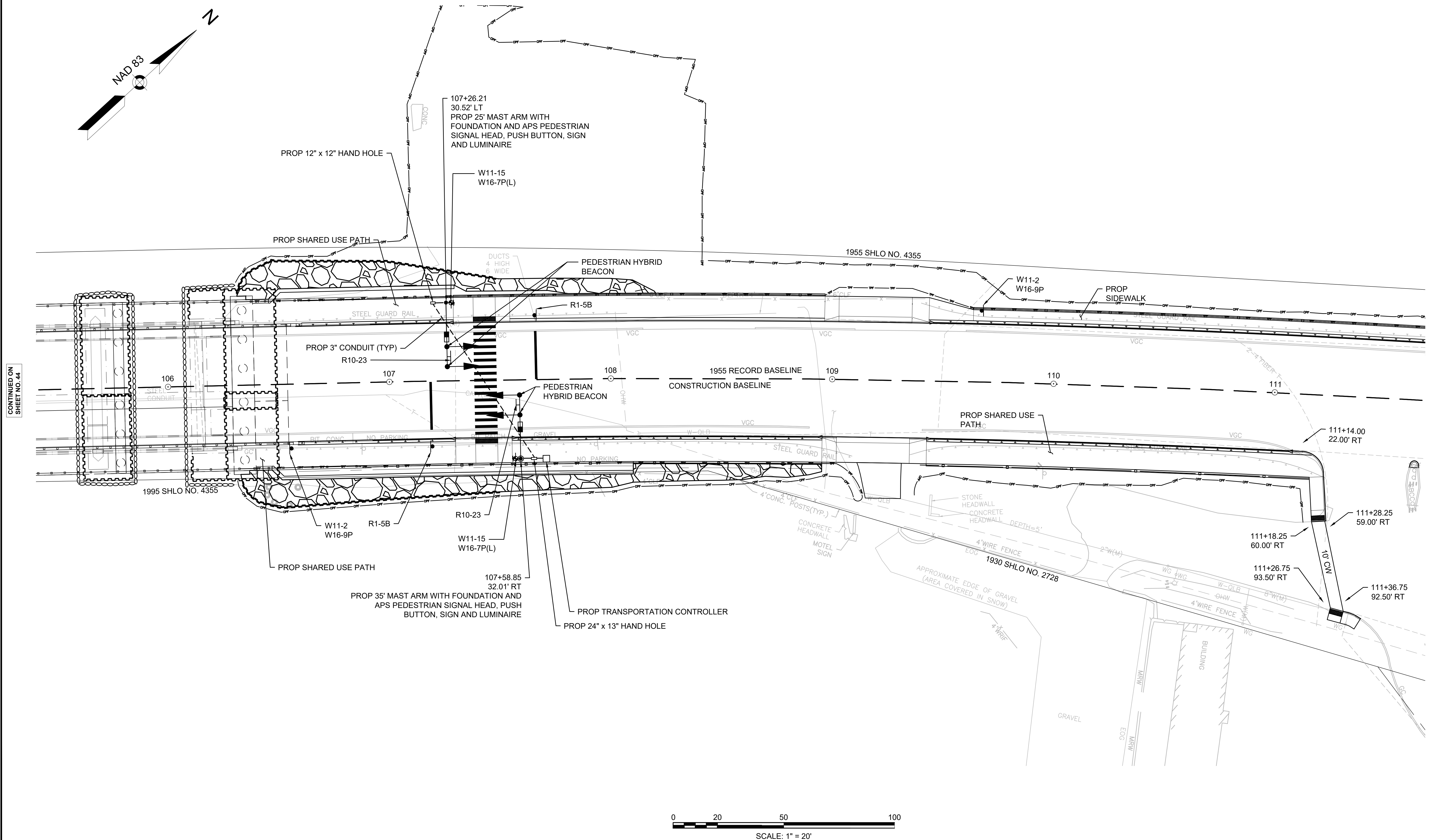
605311_TRSIGNAL PLANS.DWG Plotted on 9-Dec-24

**MARION-WAREHAM
WAREHAM RD/MARION RD (US 6)
OVER WEWEANTIC RIVER**

STATE	FED. AID PROJ. NO.	SHEET NO.	TOTAL SHEETS
MA	-	47B	56
PROJECT FILE NO. 605311			

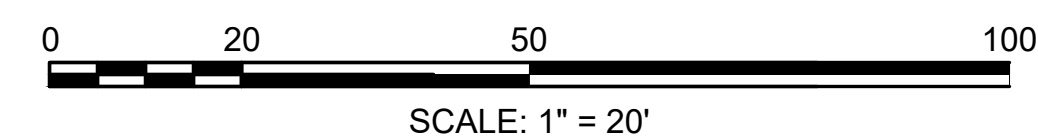
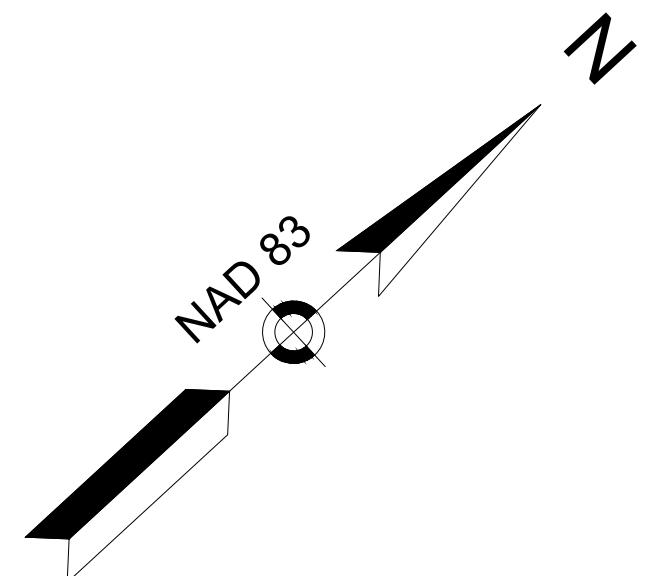
**SIGNAL PLANS
SHEET 2 OF 2**

605311_TRSIGNAL PLANS.DWG Plotted on 9-Dec-24



CONTINUED ON SHEET NO. 44

CONTINUED ON SHEET NO. 46



DATE	DESCRIPTION
DECEMBER 9, 2024	ADDENDUM 9 - RESPONSE TO QUESTIONS/COMMENTS
	USE ONLY PRINTS OF LATEST DATE