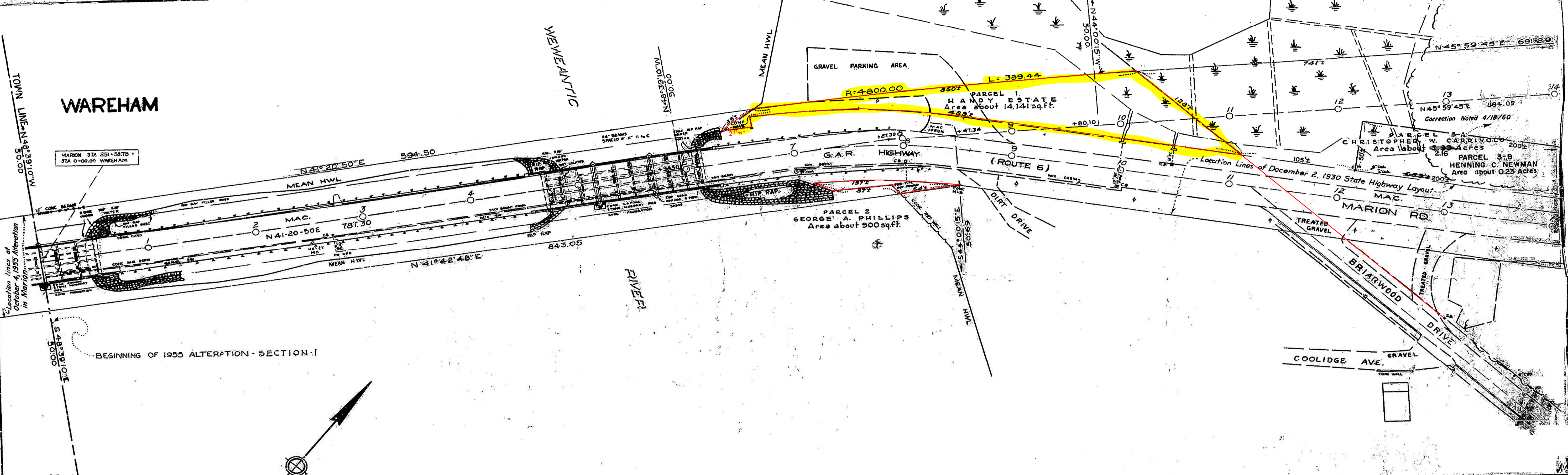


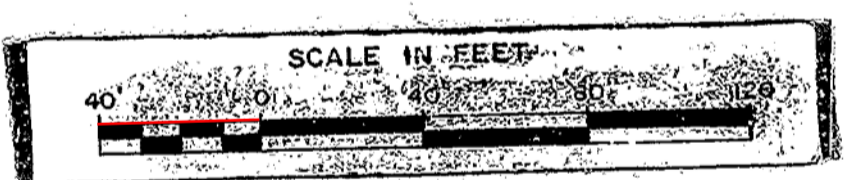
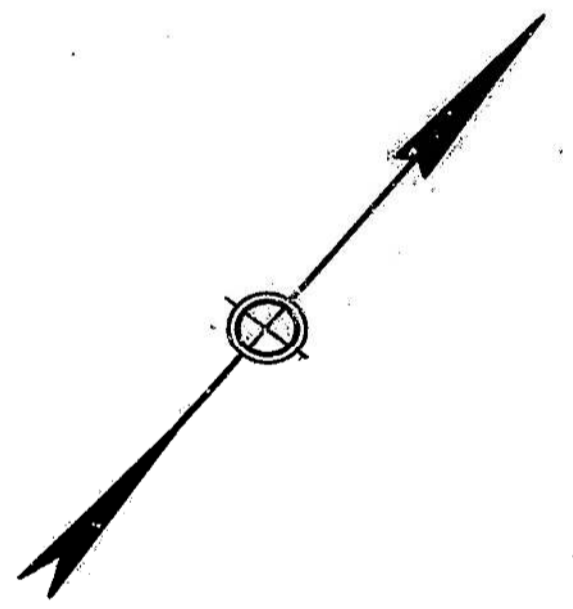
WAREHAM



Location lines of October 4, 1955 Alteration in Marion

MARION STA 251+54.75  
STA 0+00.00 WAREHAM

BEGINNING OF 1955 ALTERATION - SECTION I



This certifies that the location of the highway has been altered as shown on this plan and that said highway as altered was laid out and taken charge of as a State Highway by the Department of Public Works on October 4, 1955 in accordance with Chapter 81 of the General Laws.

*[Signature]*  
*[Signature]*

The Commonwealth of Massachusetts  
 PLAN OF ROAD  
 in the Town of  
**WAREHAM**  
 PLYMOUTH COUNTY  
 Altered and laid out as a State Highway by the  
 Department of Public Works  
 October 4, 1955  
 Scale - 40 feet to the inch

MARION