

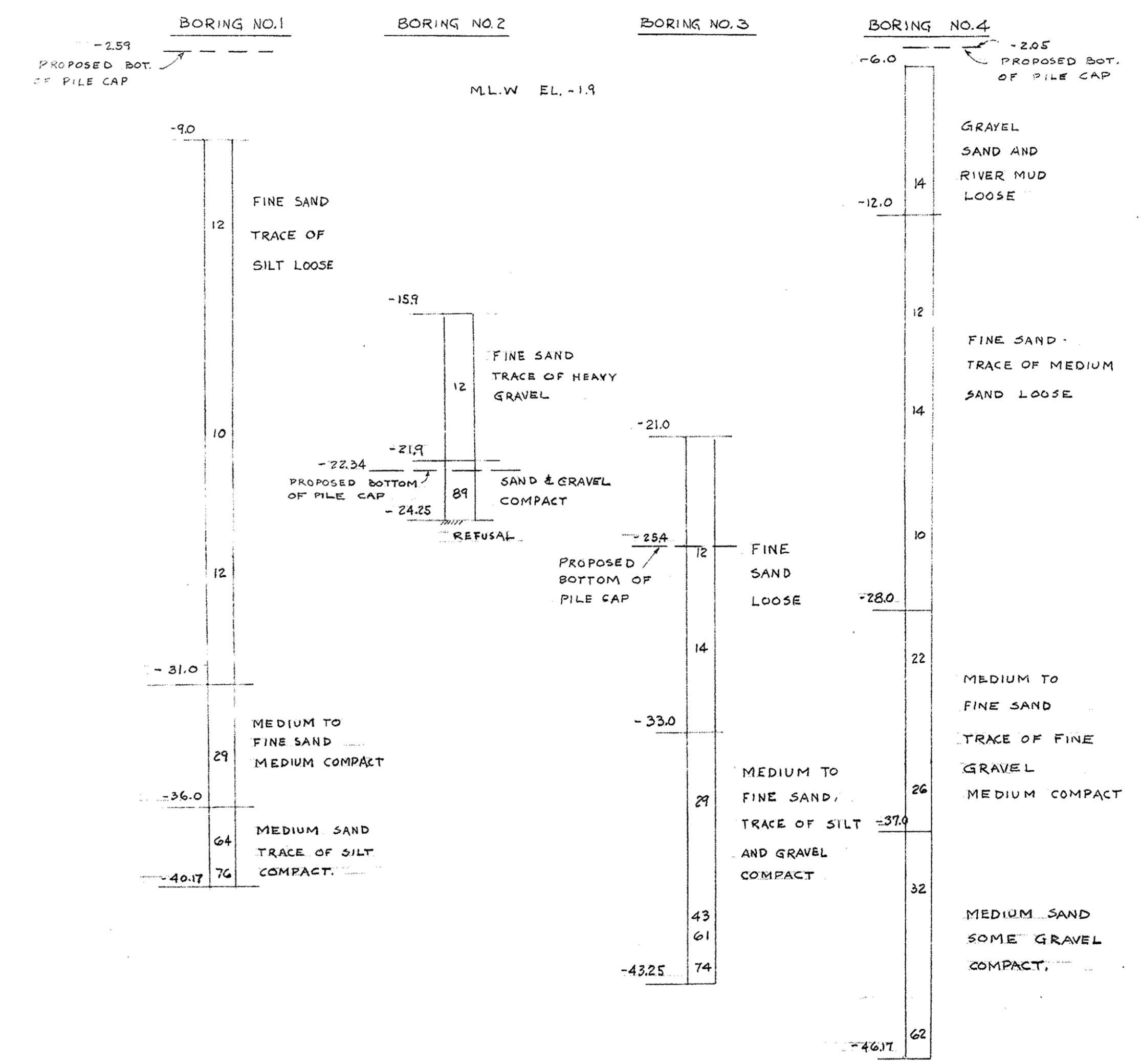
PROFILE OF MARION ROAD (ROUTE 6)  
HORIZONTAL SCALE 1"=40'  
VERTICAL SCALE 1"=8'0"

**BORING NOTES**

LOCATION OF BORING SHOWN THUS  $\odot$  BORING NO. 3.  
BORING TAKEN FOR PURPOSE OF DESIGN AND SOIL CONDITION AT BORING POINT ONLY, AND DO NOT NECESSARILY SHOW NATURE OF MATERIAL TO BE ENCOUNTERED DURING CONSTRUCTION. FIGURES IN COLUMNS INDICATE BLOWS PER FOOT ON ONE INCH  $\phi$  PIPE PRODUCED BY 30 INCH FALL OF 140 POUND HAMMER. BORING SAMPLES MAY BE SEEN AT THE OFFICE OF THE BRIDGE ENGINEER MR. J.C. RUNDLETT ROOM 609 100 NASSUA ST. BOSTON, MASS., ON ADVANCE NOTICE.

**BORING DATA**

SCALE 1/4"=1'-0" BORINGS TAKEN DEC. 1954 BY THE AMERICAN DRILLING CO.



**GENERAL NOTES**

- FOUNDATIONS** MAY BE ALTERED IF NECESSARY TO SUIT CONDITIONS ENCOUNTERED IN CONSTRUCTION.
- DATE AND SEAL** DATE TO BE CUT INTO ONE STONE OF SIZE DETAILED, LOCATED ON INSIDE FACES OF NORTHWESTERLY & SOUTHEASTERLY POSTS AS SHOWN IN DETAIL ON SHEET NO. 3. A SHEET SHOWING SIZE AND CHARACTER OF NUMERALS WILL BE FURNISHED. SEAL WILL BE FURNISHED BY THE COMMONWEALTH.
- DESIGN** ACCORDING TO THE 1953 SPECIFICATIONS OF THE AMERICAN ASSOCIATION OF STATE HIGHWAY OFFICIALS FOR H-20-44 LOADING.
- BENCH MARK** B.M. #51 CHISELED ON CONC. BRIDGE WALL STA 250+93. MARION RD (ROUTE 6) 227 FT. ELEV. 12.32 SEA LEVEL DATUM OF 1929.
- REINFORCEMENT** ALL REINFORCING STEEL BARS SHALL CONFORM TO A.S.T.M. SPECIFICATION A 305-49. UNLESS OTHERWISE SHOWN ON PLANS, REINFORCING BARS SHALL BE LAPPED 20 DIAMETERS TO MAKE A SPLICE EXCEPT THAT MAIN REINFORCING BARS NEAR TOP OF SLABS & BEAMS HAVING MORE THAN 12" OF CONCRETE UNDER THE BARS, SHALL BE LAPPED 35 DIAMETERS TO MAKE A SPLICE.
- PILES** TREATED TIMBER PILES SHALL BE DRIVEN TO A MINIMUM LOAD BEARING CAPACITY OF 10 TONS.

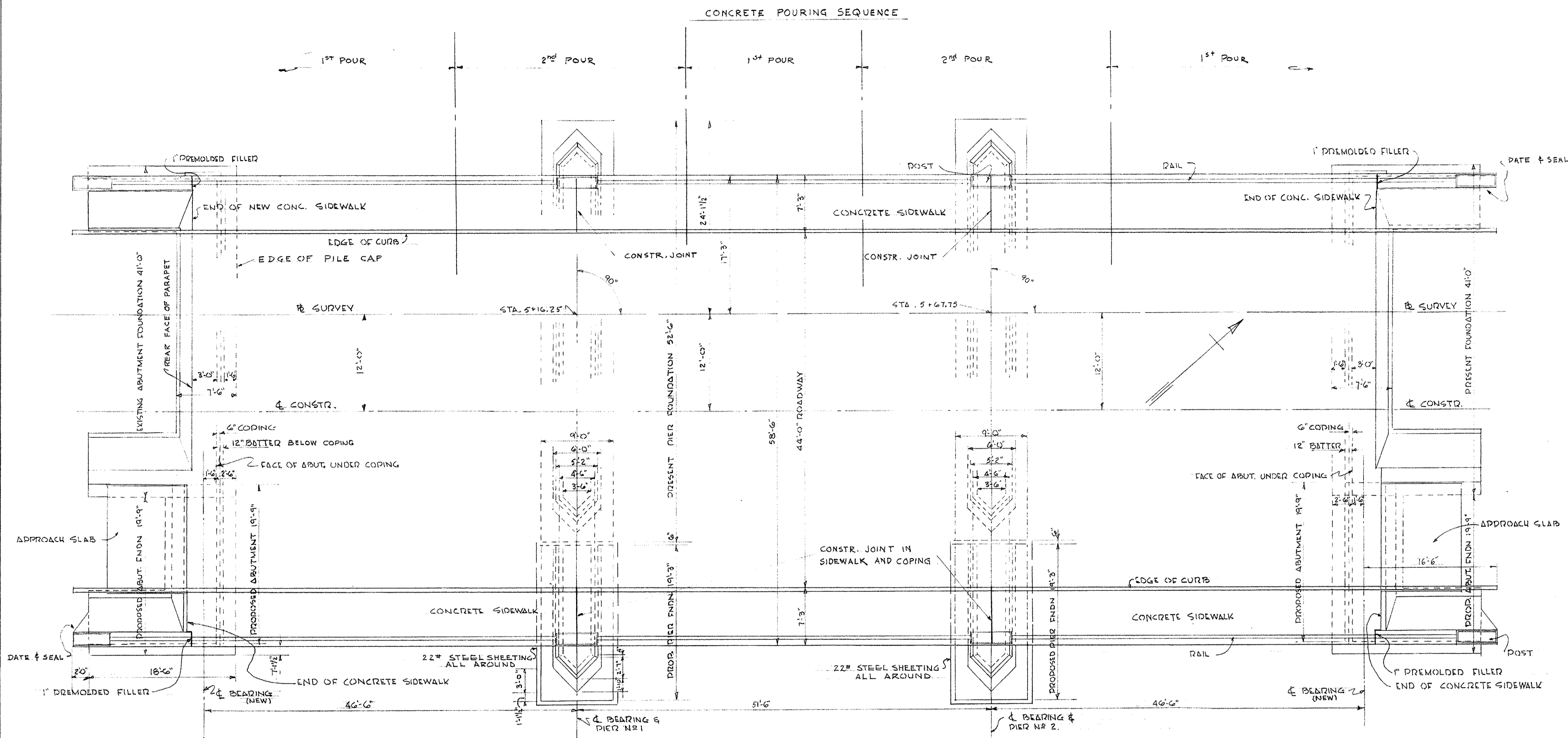
PLANS OF THE EXIST. BRIDGE ARE AVAILABLE AND MAY BE SEEN AT THE OFFICE OF THE BRIDGE ENGINEER, ROOM 609, 100 NASHUA ST., BOSTON, MASS. DIMENSIONS & DETAILS SHOWN FOR EXISTING STRUCTURE MUST BE CHECKED IN THE FIELD BY THE CONTRACTOR.

**ESTIMATED QUANTITIES**  
NOT GUARANTEED

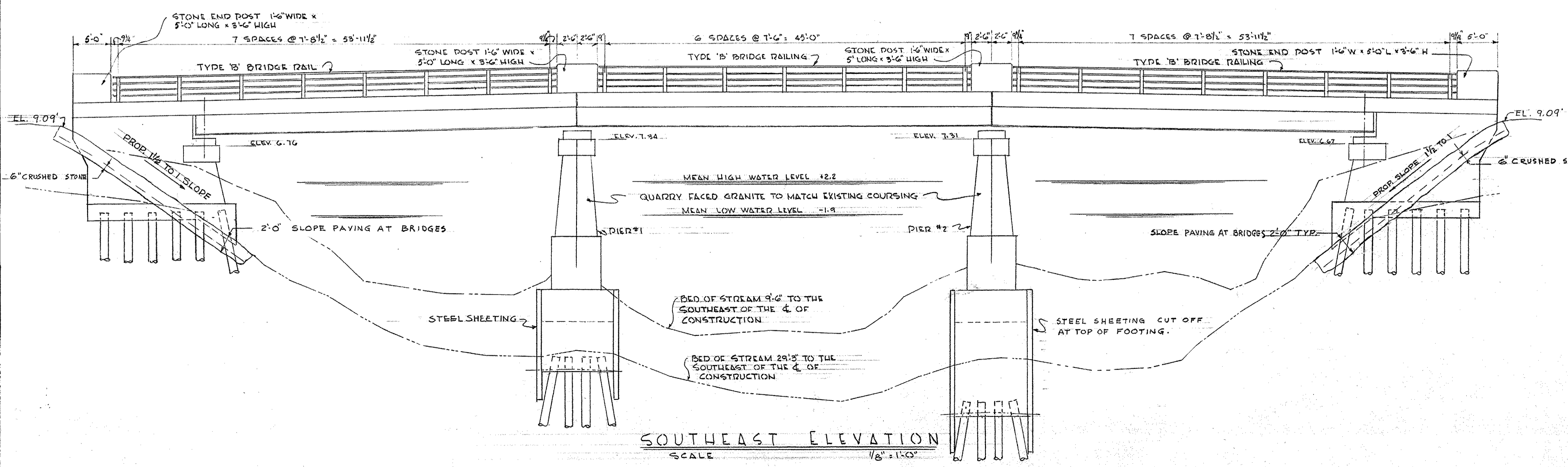
CLASS A ROCK EXCAVATION	10 C.Y.
BRIDGE EXCAVATION	190 C.Y.
CLASS B ROCK EXCAVATION	5 C.Y.
CHANNEL EXCAVATION	20 C.Y.
GRAVEL BORROW	110 C.Y.
STEEL SHEETING	46,200 LBS.
CLASS I BIT CONC. PAVEMENT TYPE-1	180 TONS
TREATED TIMBER PILES	2380 LF.
SLOOT PAVING AT BRIDGES	80 C.Y.
BRIDGE STRUCTURE (W-6-16)	1 L.S.
BRIDGE EXCAVATION AT PIERS	110 C.Y.

NOV. 3, 1956	ISSUED FOR CONSTRUCTION
THE COMMONWEALTH OF MASSACHUSETTS	
PROPOSED BRIDGE WIDENING	
<b>WAREHAM</b>	
ROUTE #6	
OVER WEVEANTIC RIVER	
SCALES AS NOTED	
OFFICE OF DEPARTMENT OF PUBLIC WORKS 100 NASHUA STREET BOSTON, MASS. NOV. 1956	
ABBOTT ASSOCIATES, INC. ARCHITECTS & ENGINEERS 131 STATE STREET BOSTON, MASS.	J. C. Rundlett BRIDGE ENGINEER
	H. S. Gray CHIEF ENGINEER

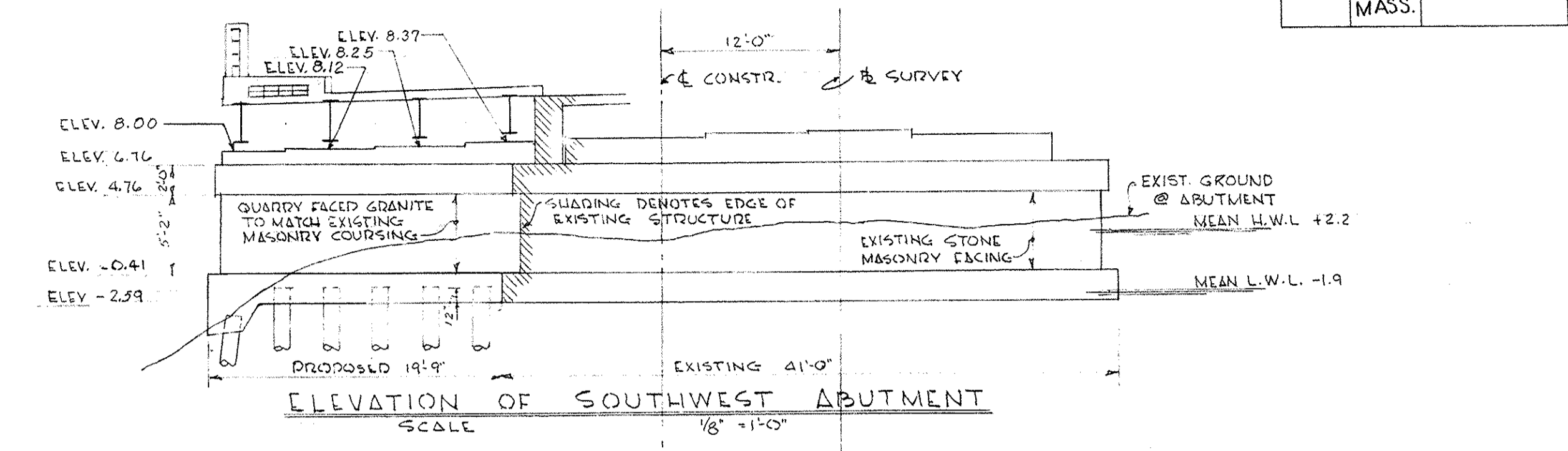
ABBOTT ASSOCIATES, INC.  
ARCHITECTS & ENGINEERS  
131 STATE STREET BOSTON, MASS.



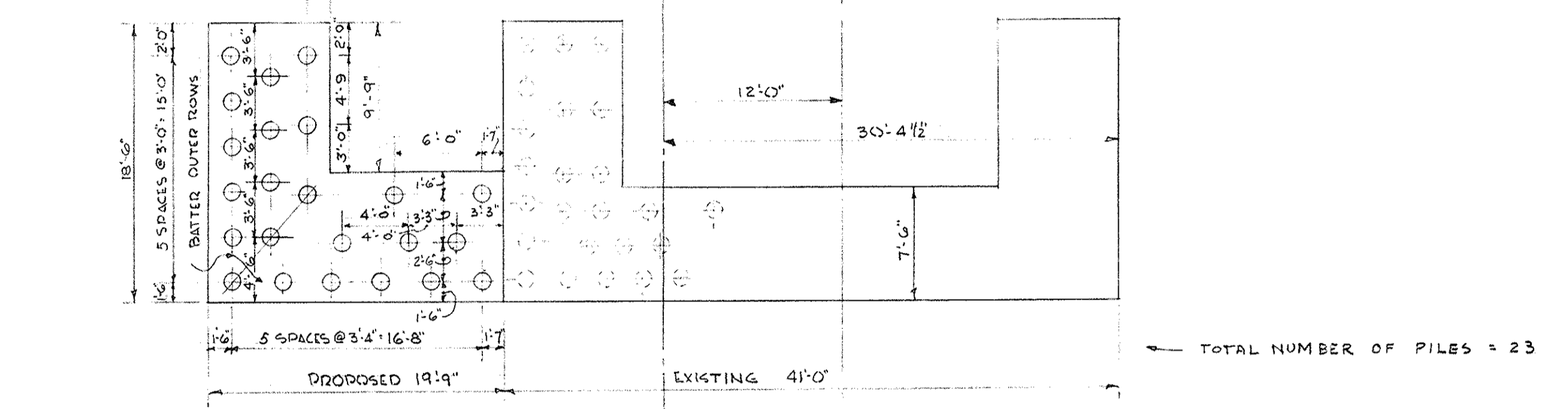
**PLAN W-6-16**  
SCALE 1/8" = 1'-0"



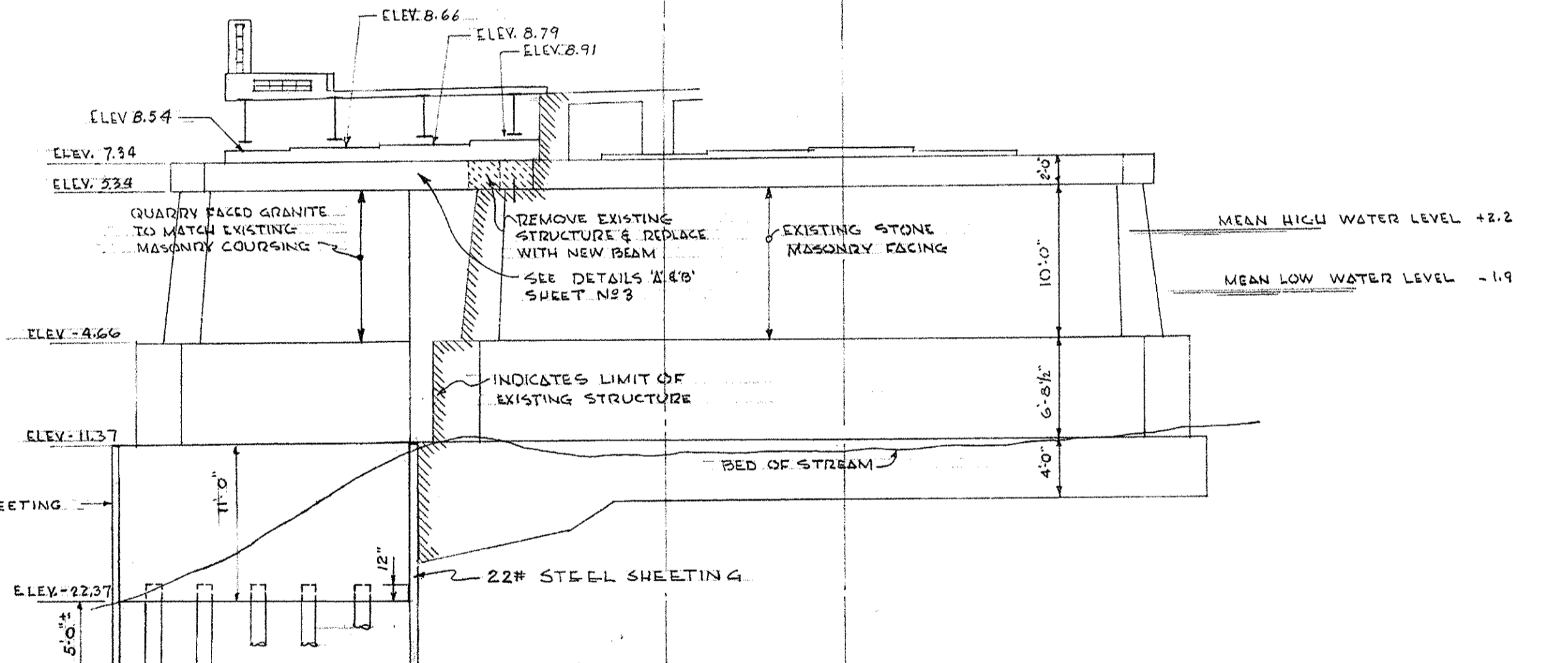
**SOUTHEAST ELEVATION**  
SCALE 1/8" = 1'-0"



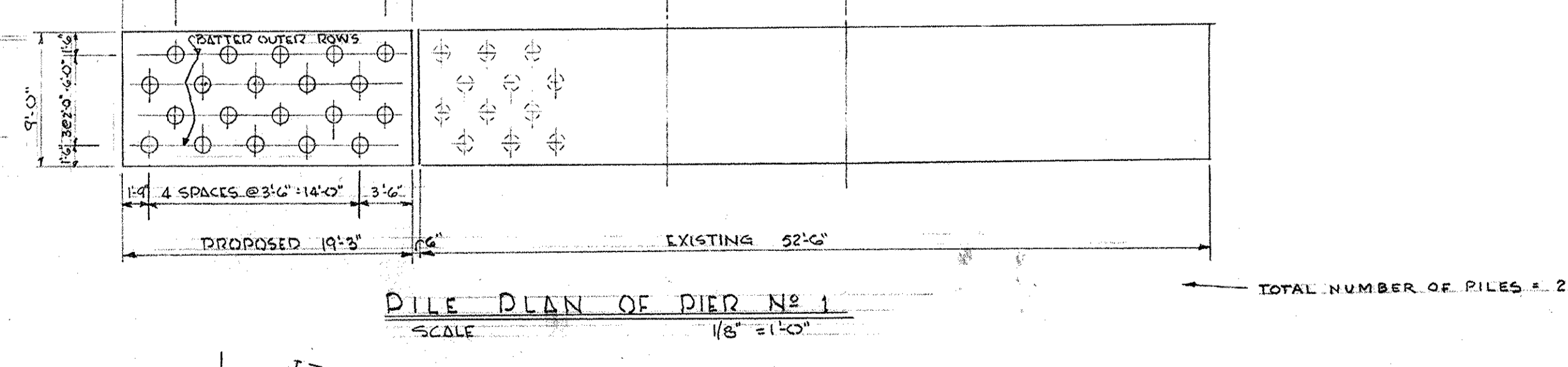
**ELEVATION OF SOUTHWEST ABUTMENT**  
SCALE 1/8" = 1'-0"



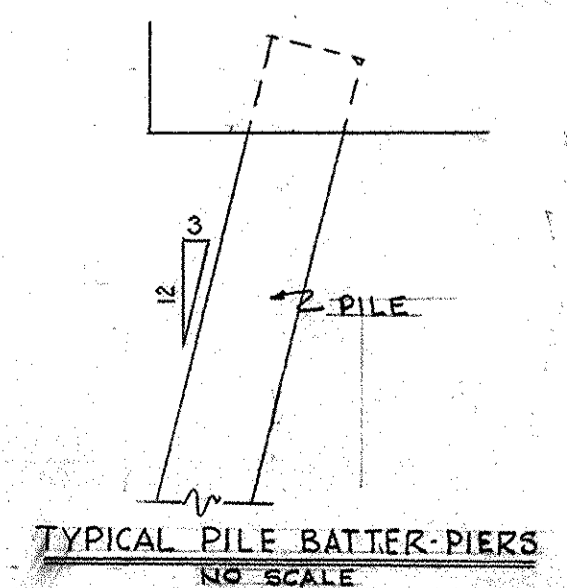
**PILING PLAN OF SOUTHWEST ABUTMENT**  
SCALE 1/8" = 1'-0"



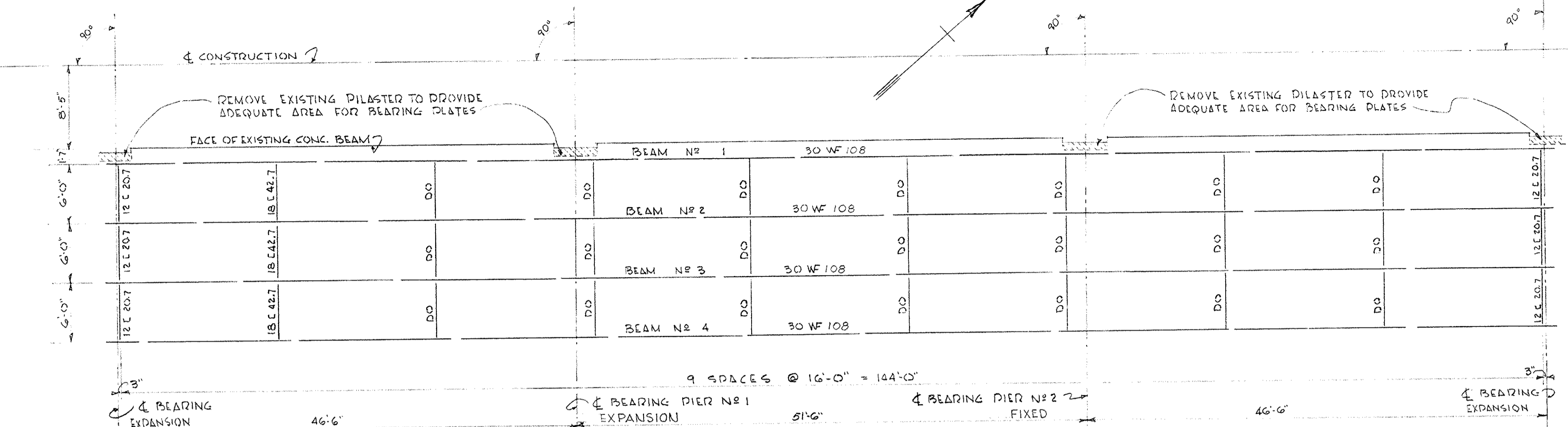
**NORTHEAST ELEVATION OF DIER NO. 1**  
SCALE 1/8" = 1'-0"



**PILING PLAN OF DIER NO. 1**  
SCALE 1/8" = 1'-0"

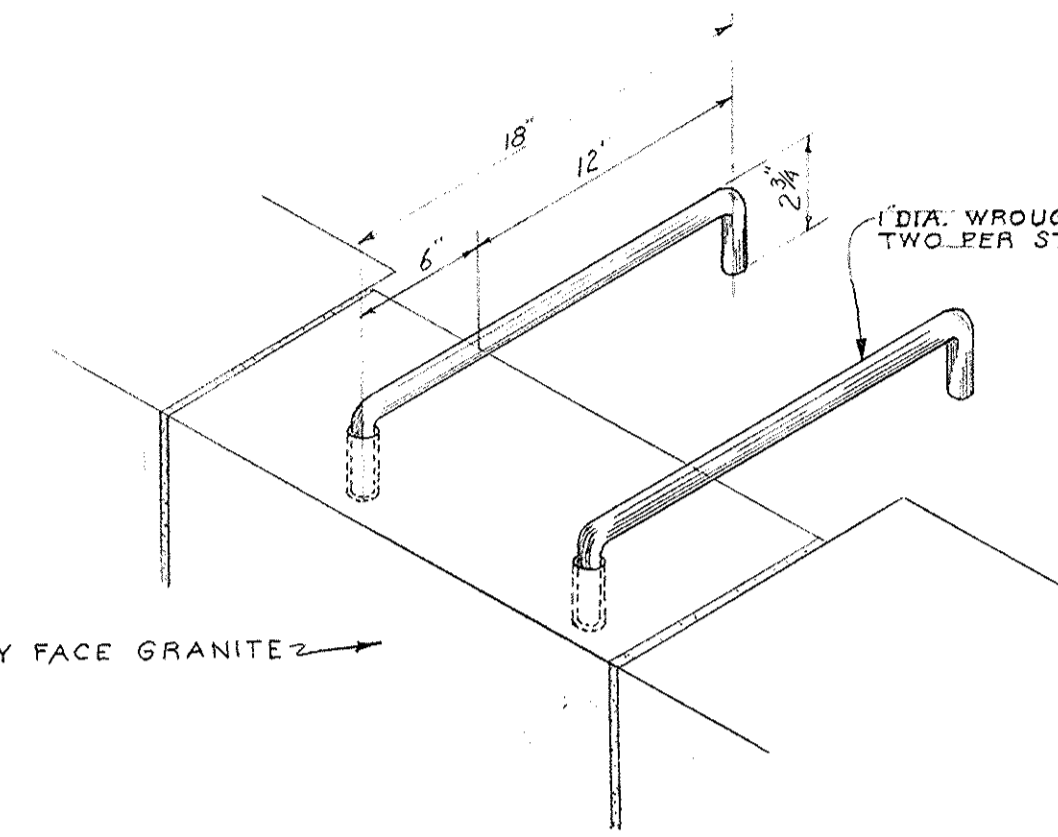


PUB. RD. DIV. NO.	STATE	FED. AID PROJ. NO.	FISCAL YEAR	SHEET NO.	TOTAL SHEETS
	MASS			3	4

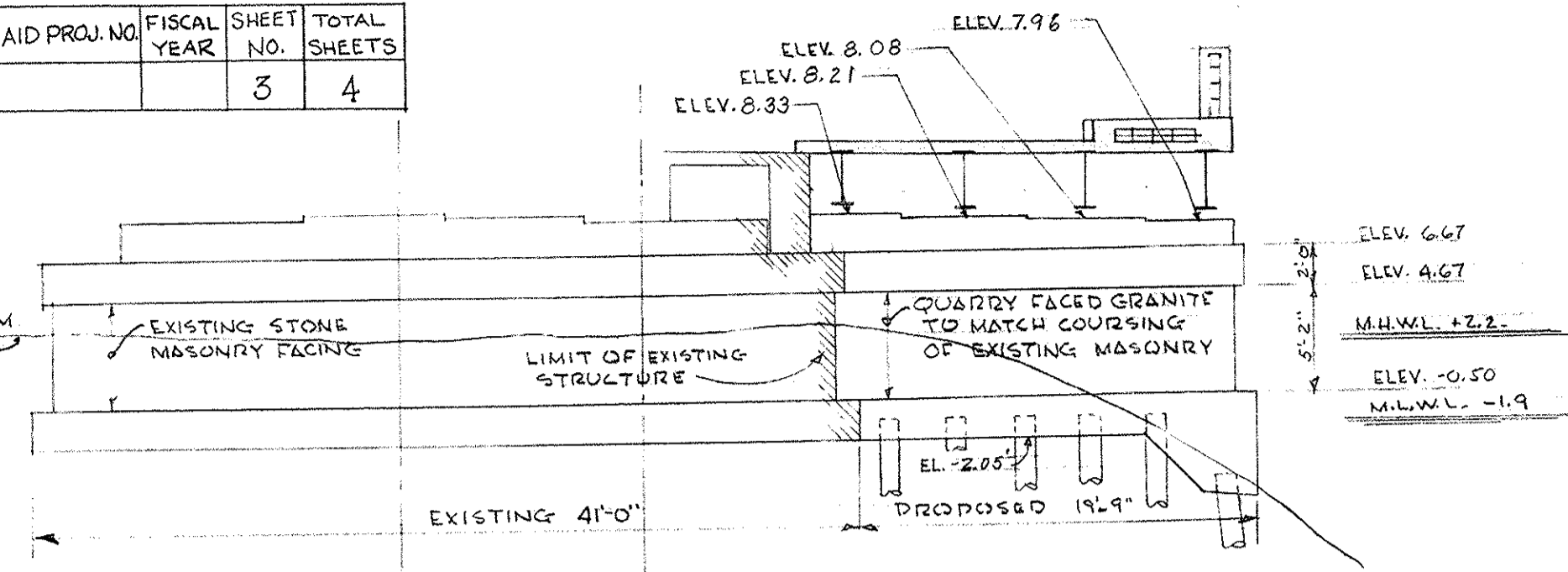


FRAMING PLAN W-6-16  
SCALE 1/8" = 1'-0"

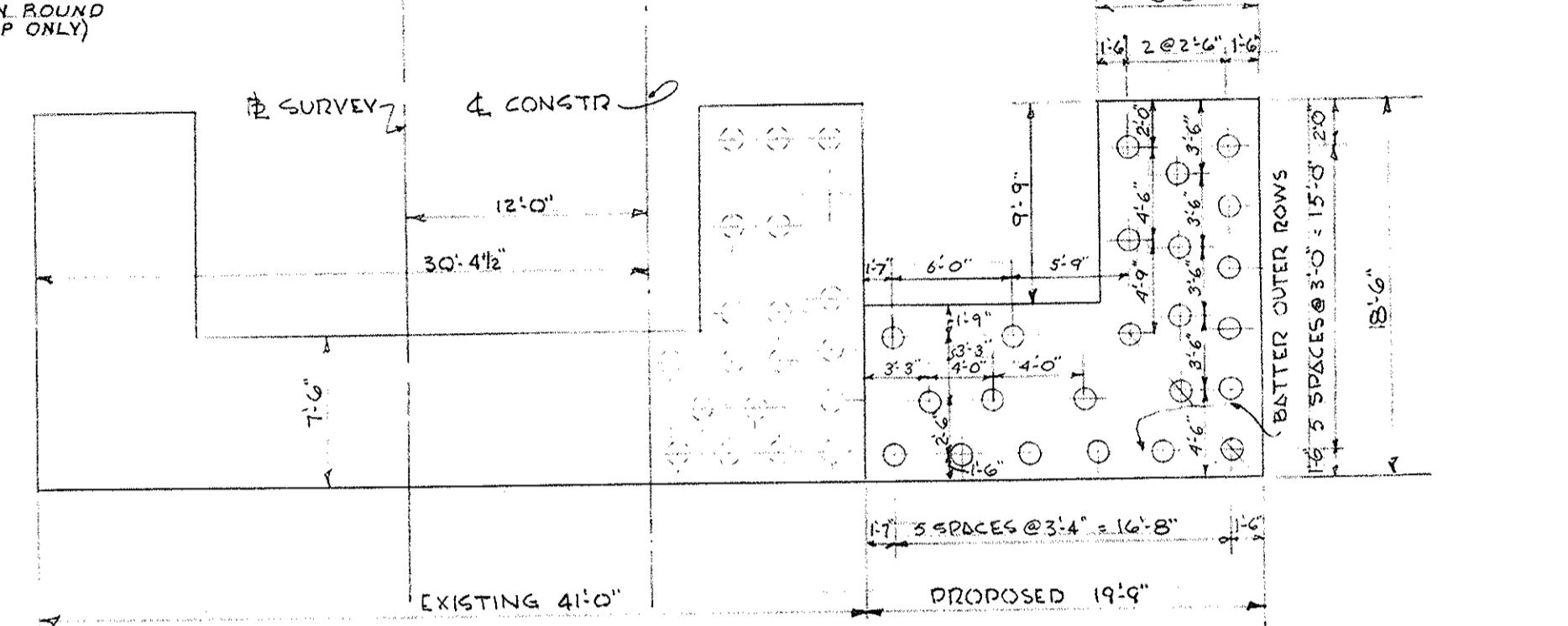
**NOTE**  
ALL STRINGERS ARE TO BE CAMBERED TO THE EXTENT THAT THE BRIDGE DECK UNDER FULL DEAD LOAD WILL FOLLOW AS NEARLY AS PRACTICABLE THE DESIGN PROFILE, AND IN NO CASE WITH LESS CAMBER THAN IS LIKELY TO REMAIN PERMANENT. THE PROPOSED CAMBER DESIGN SHALL BE SUBMITTED TO THE ENGINEER FOR APPROVAL.



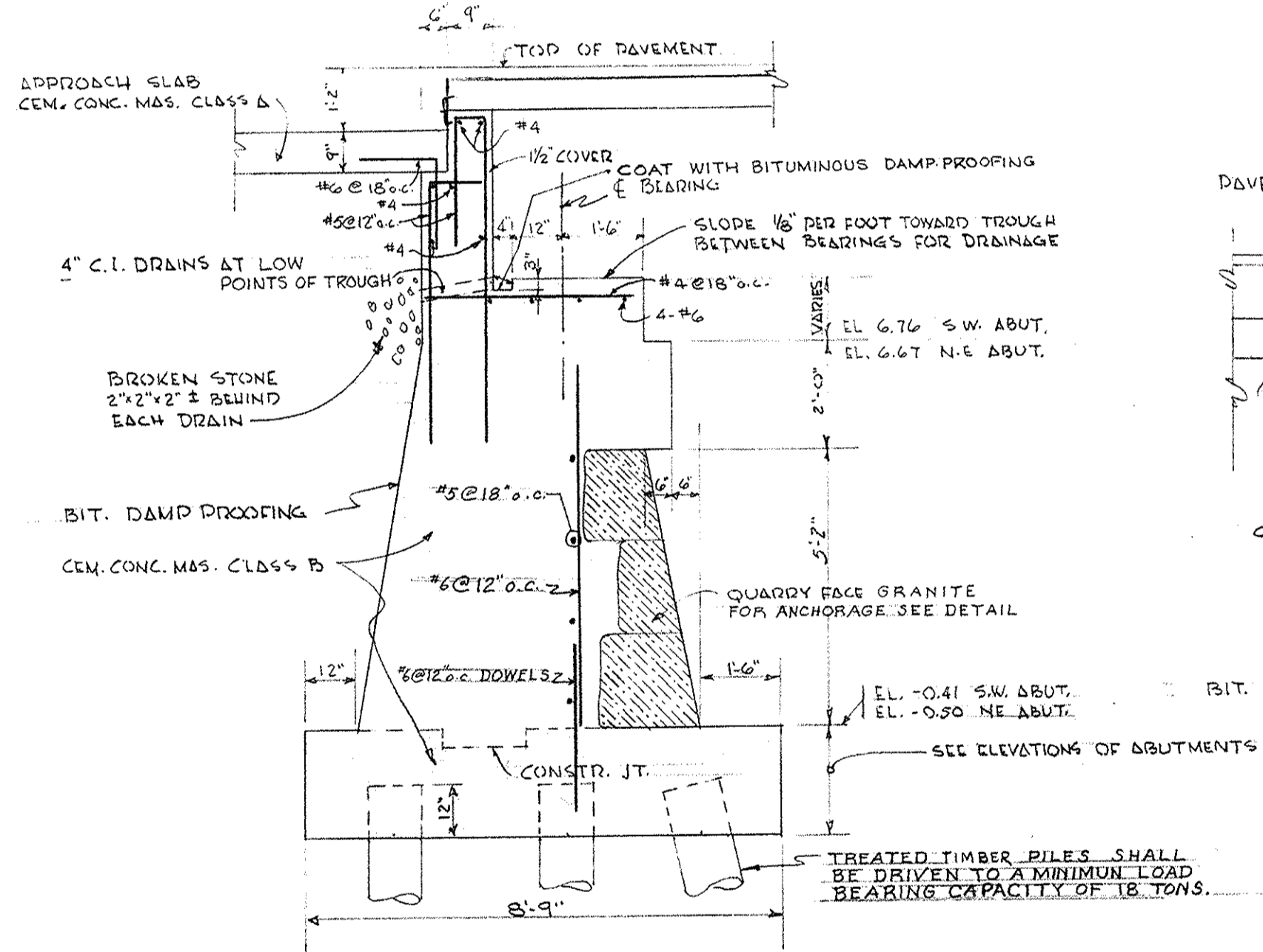
DETAIL OF STONE ANCHORAGE  
SCALE 1/2" = 1'-0"



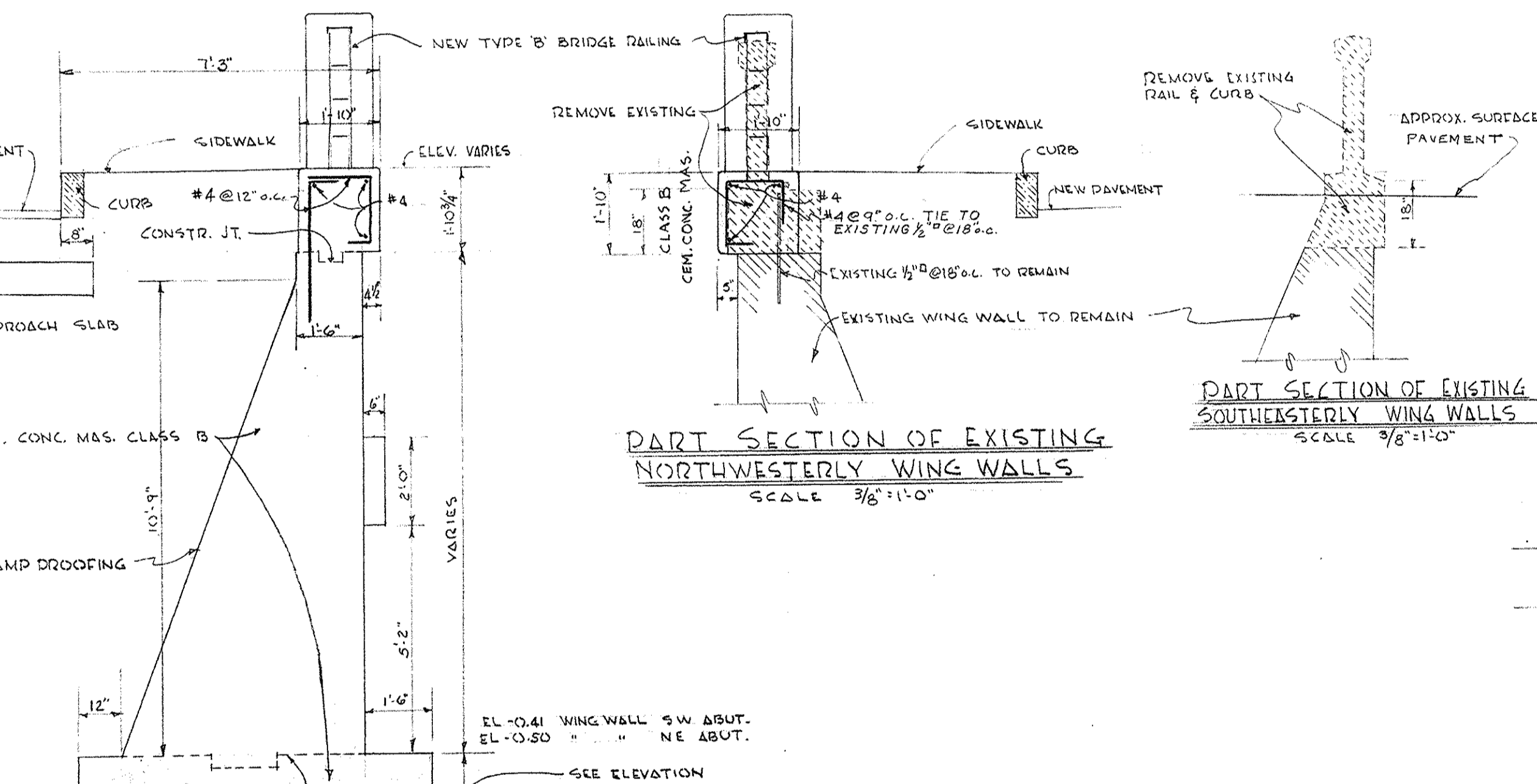
ELEVATION OF NORTHEAST ABUTMENT  
SCALE 1/8" = 1'-0"



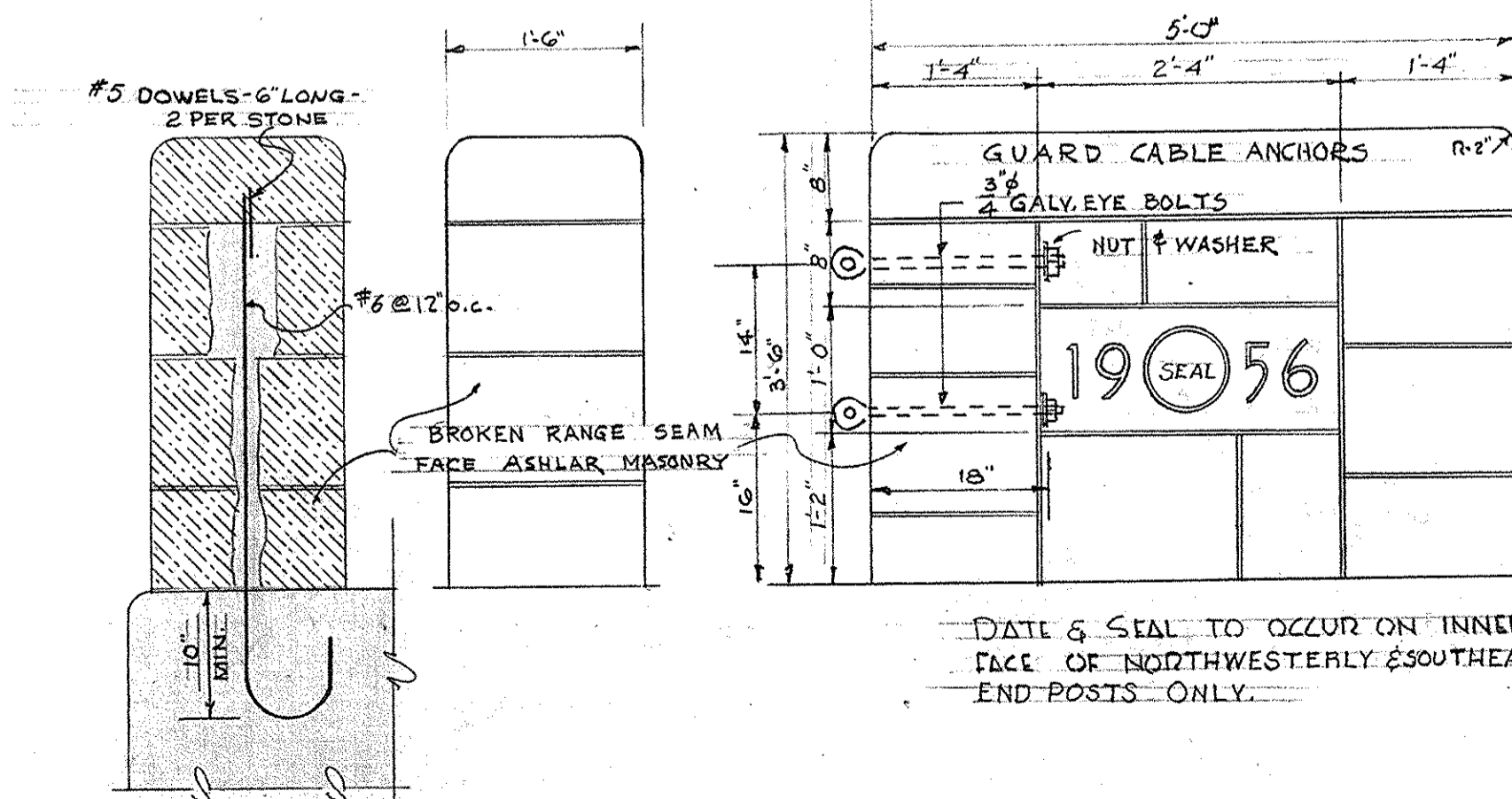
PILING PLAN OF NORTHEAST ABUTMENT  
SCALE 1/8" = 1'-0" TOTAL NUMBER OF PILES = 23



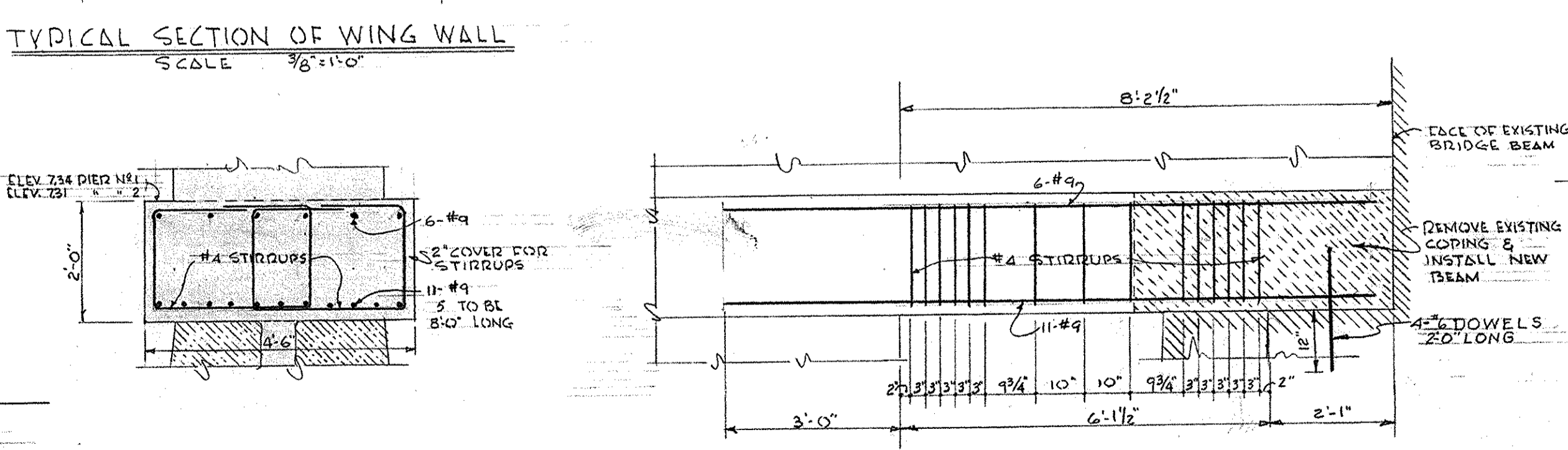
TYPICAL SECTION OF ABUTMENT EXTENSIONS  
SCALE 3/8" = 1'-0"



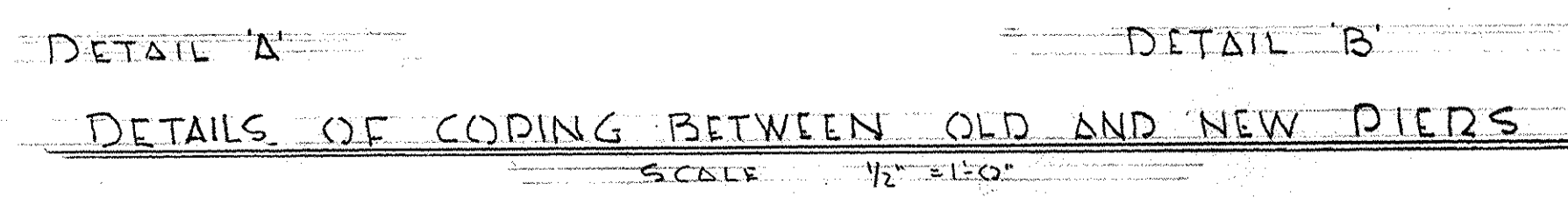
PART SECTION OF EXISTING NORTHWESTERLY WING WALLS  
SCALE 3/8" = 1'-0"



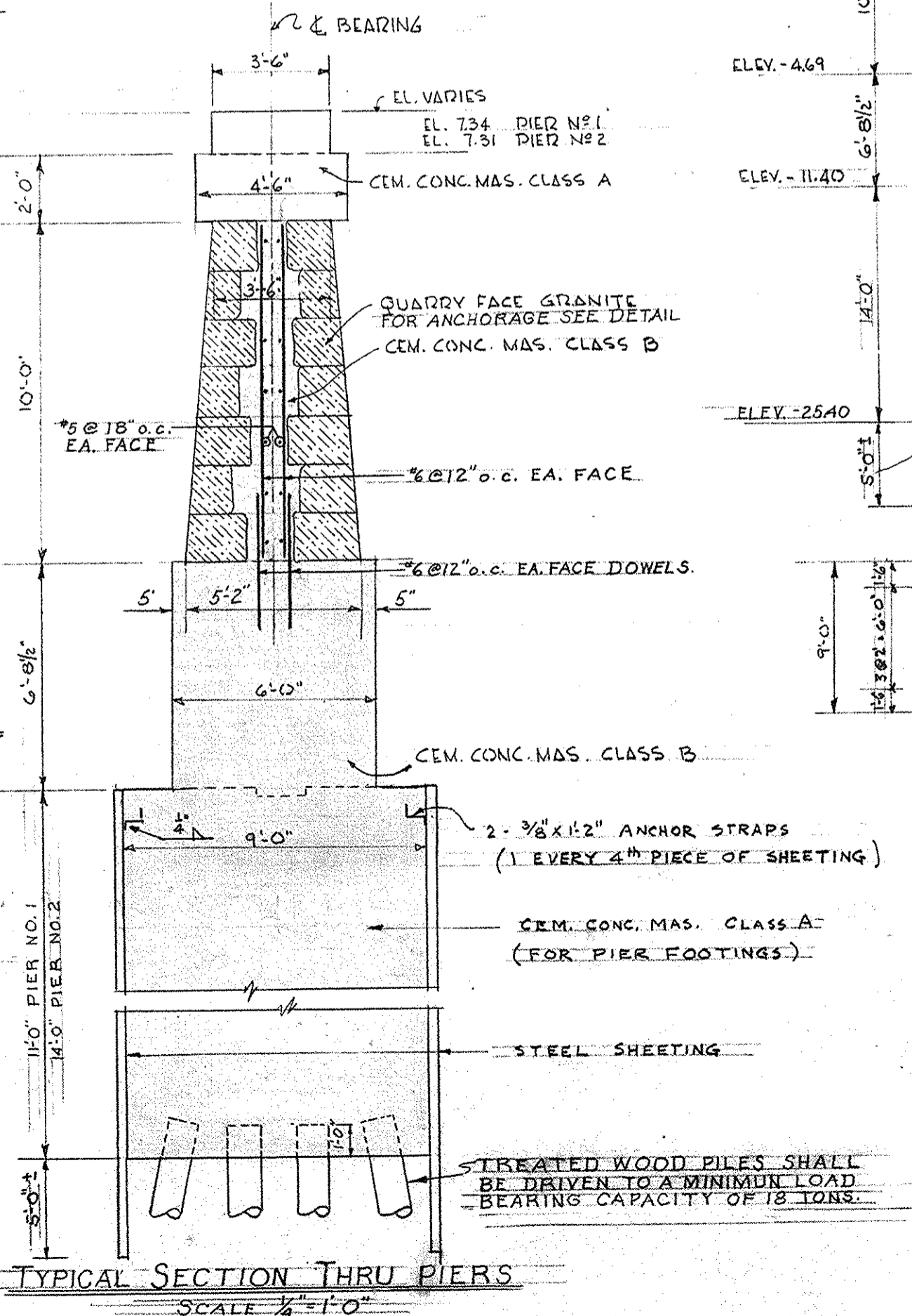
SECTION ELEVATIONS DETAILS OF STONE POSTS  
SCALE 3/4" = 1'-0"



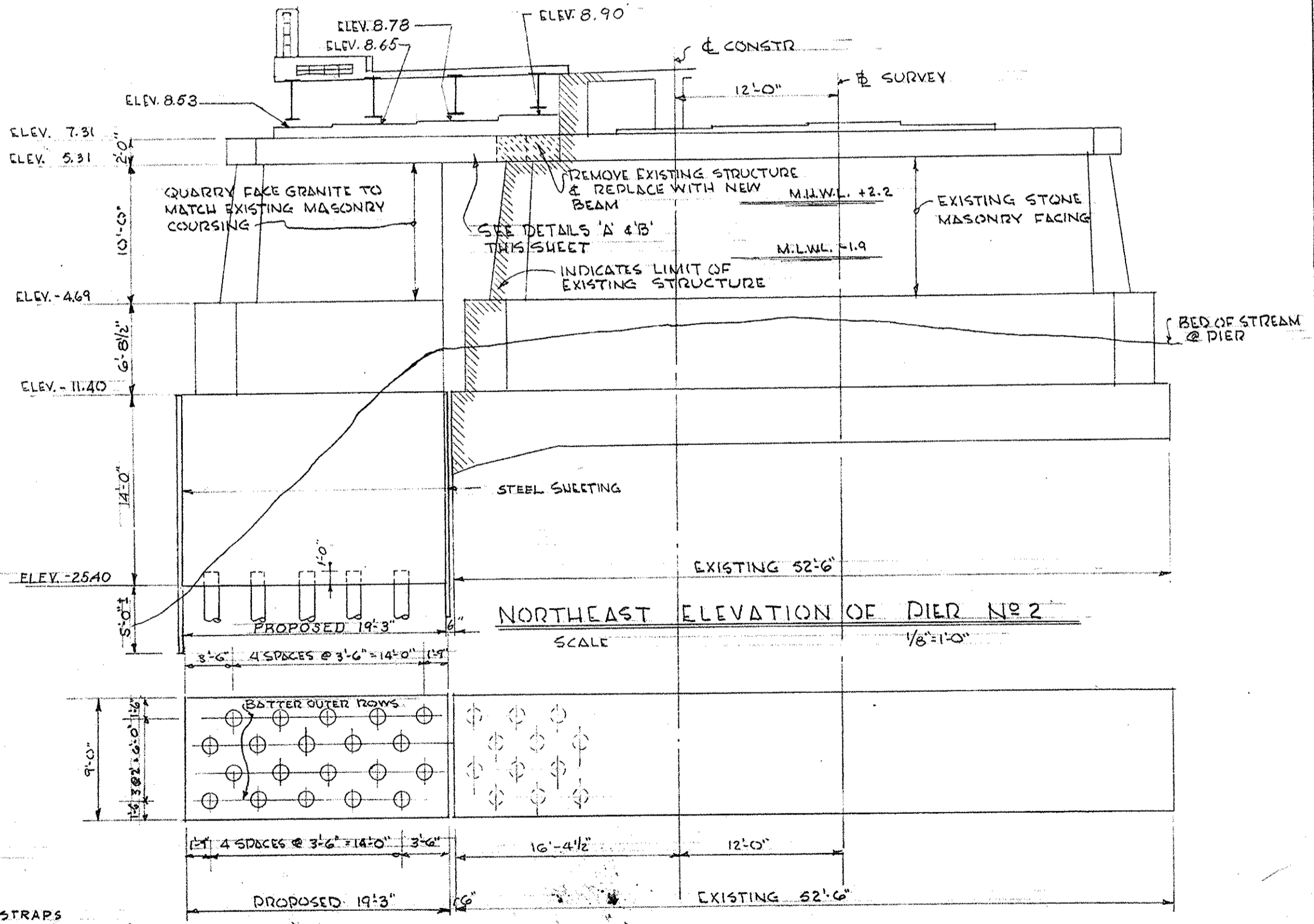
TYPICAL SECTION OF WING WALL  
SCALE 3/8" = 1'-0"



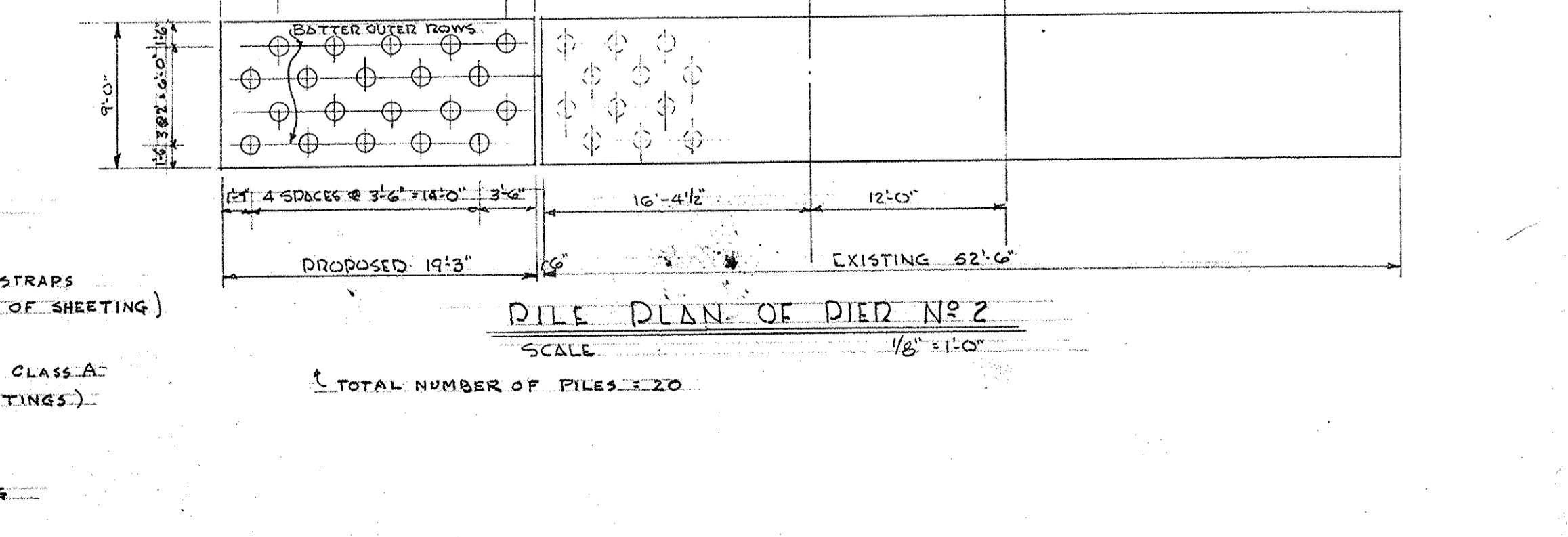
DETAILS OF COPING BETWEEN OLD AND NEW PIERS  
SCALE 1/2" = 1'-0"



TYPICAL SECTION THRU PIERS  
SCALE 1/2" = 1'-0"



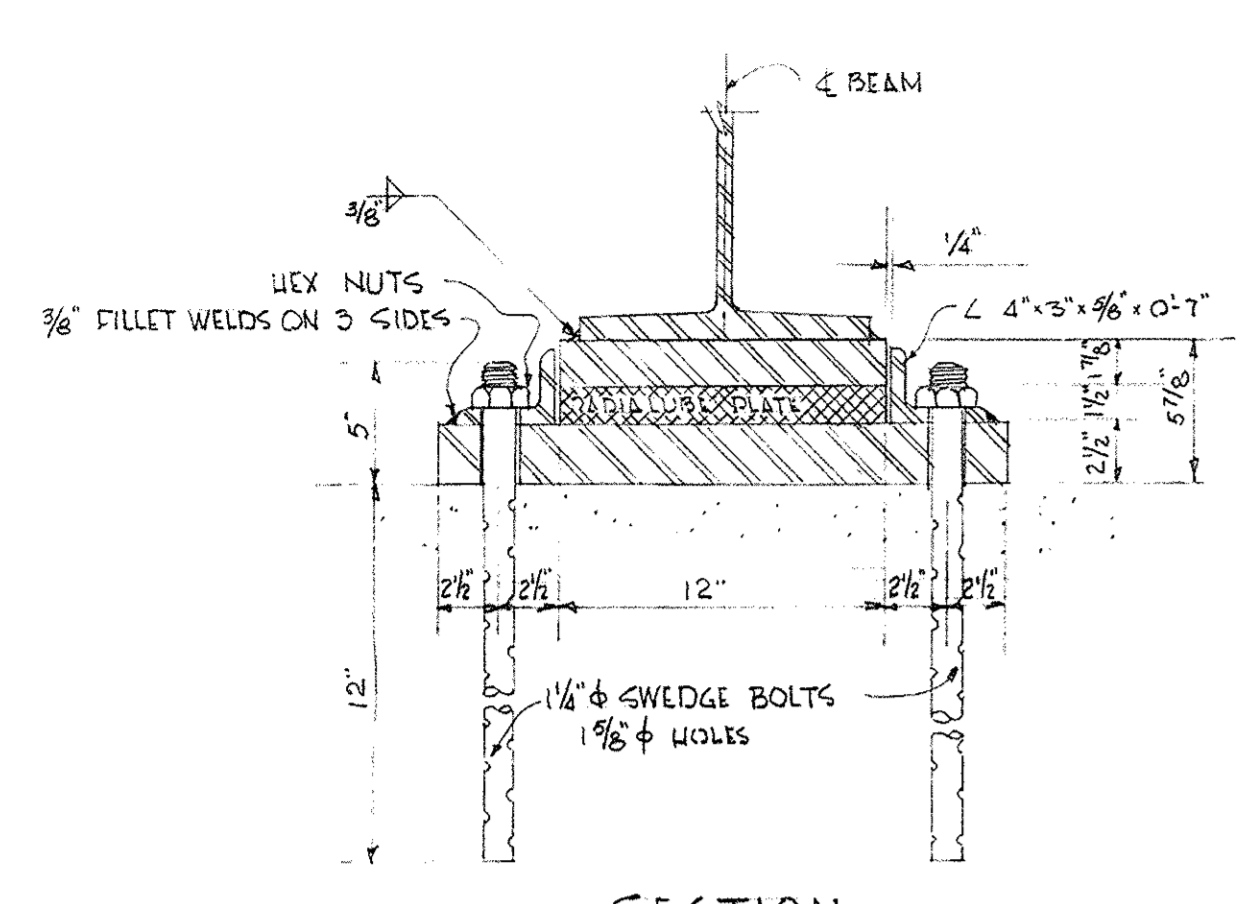
NORTHEAST ELEVATION OF DIER NO. 2  
SCALE 1/8" = 1'-0"



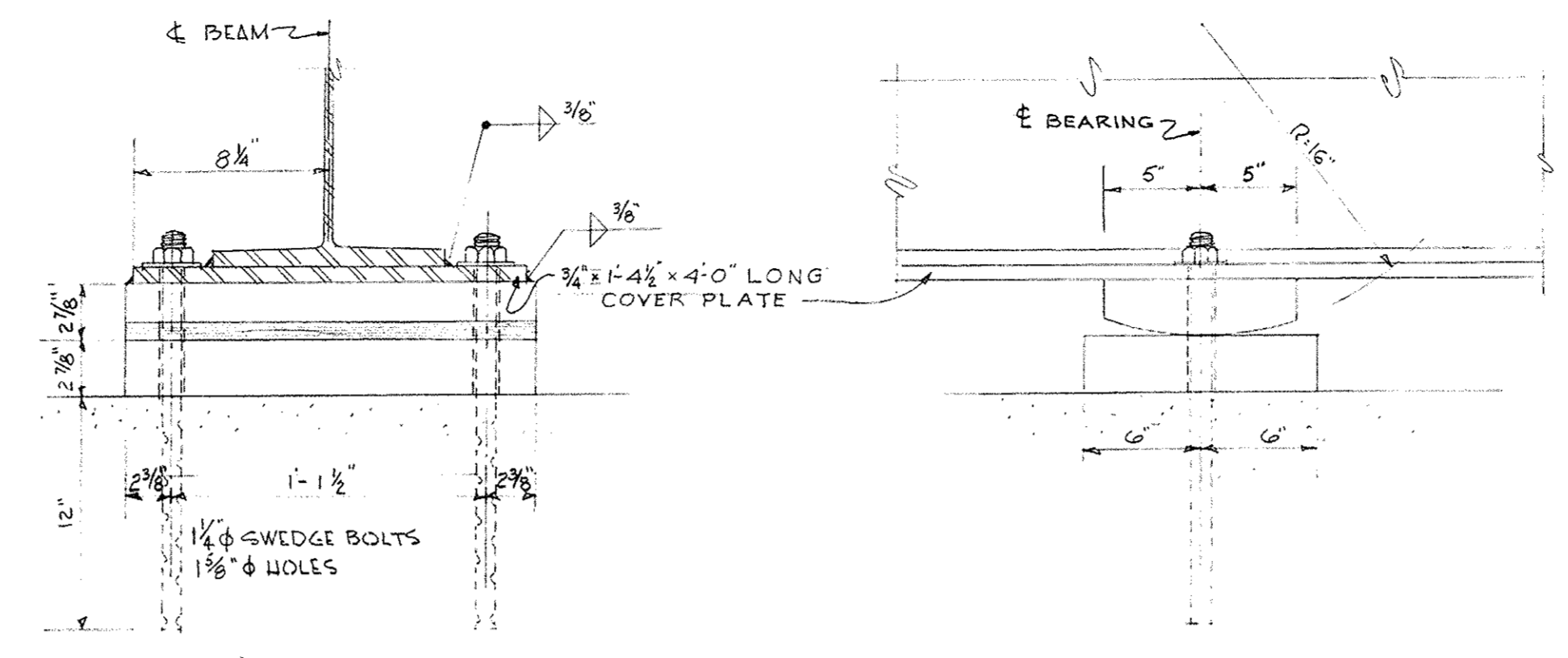
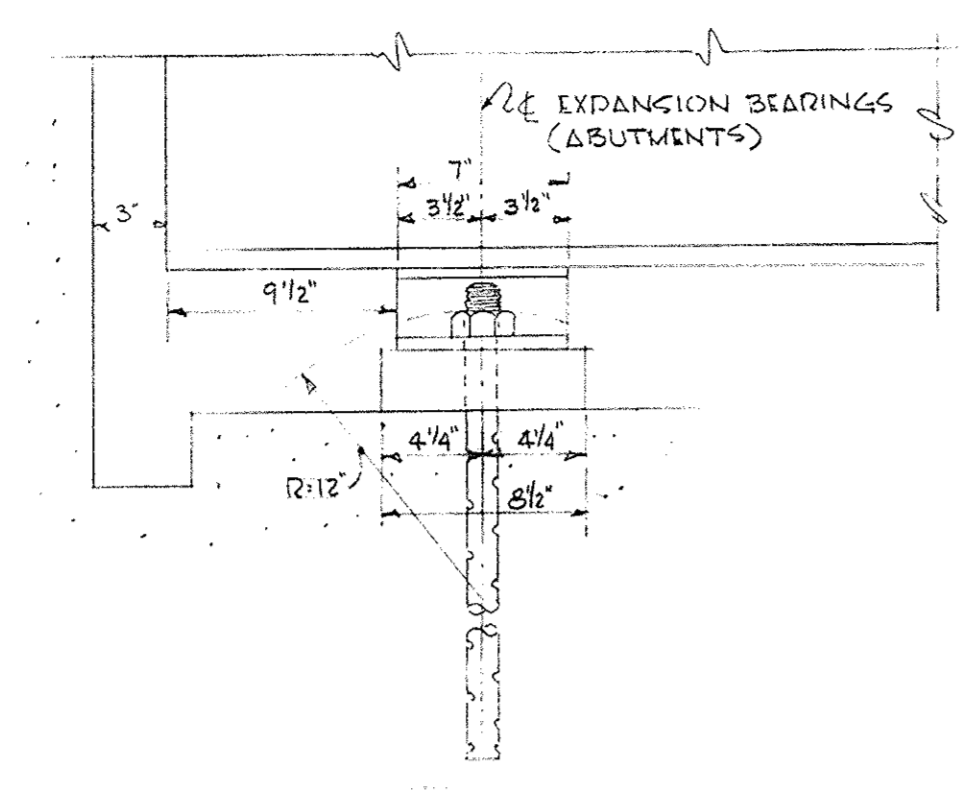
PILING PLAN OF DIER NO. 2  
SCALE 1/8" = 1'-0" TOTAL NUMBER OF PILES = 20

NOV. 3, 1956	ISSUED FOR CONSTRUCTION
DATE	DESCRIPTION
	USE ONLY PRINTS OF LATEST DATE

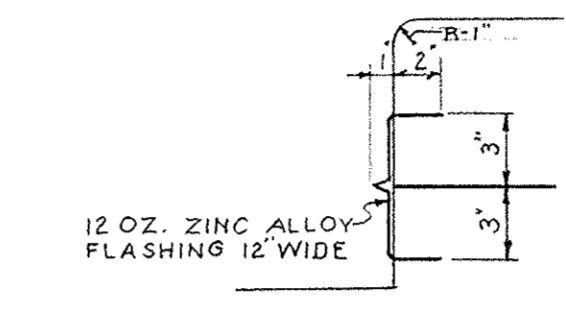
PUB. RD. DIV. NO.	STATE	FED. AID PROJ. NO.	FISCAL YEAR	SHEET NO.	TOTAL SHEETS
	MASS.			4	4



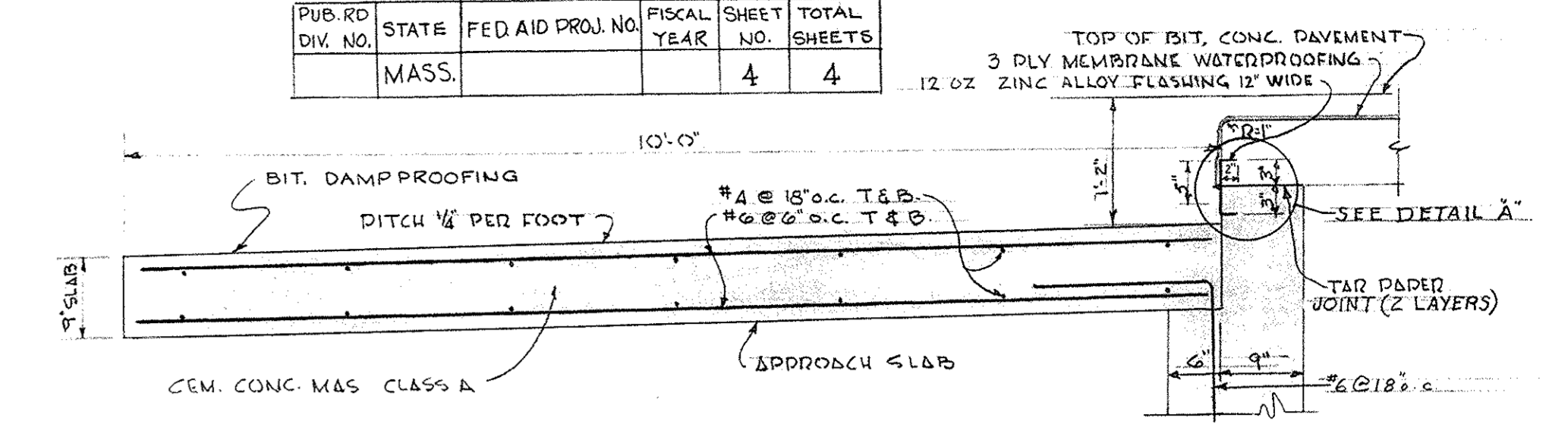
SECTION  
DETAILS OF EXPANSION BEARINGS (ABUTMENTS)  
SCALE 1/2" = 1'-0"



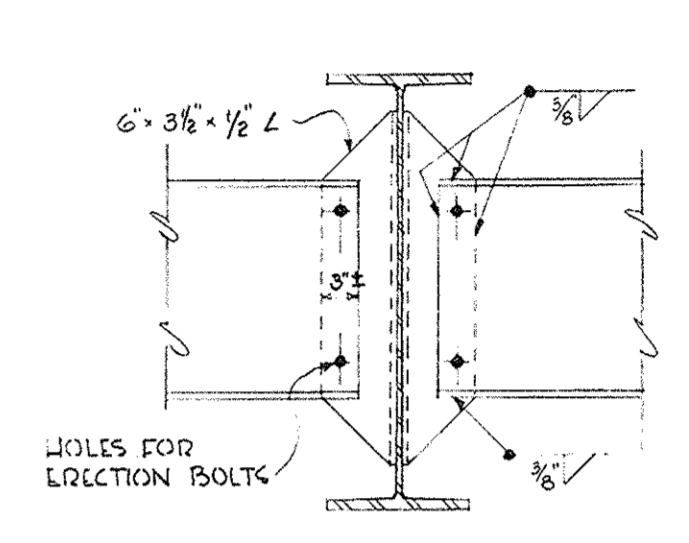
SECTION  
DETAILS - FIXED BEARINGS PIER NO 2  
SCALE 1/2" = 1'-0"



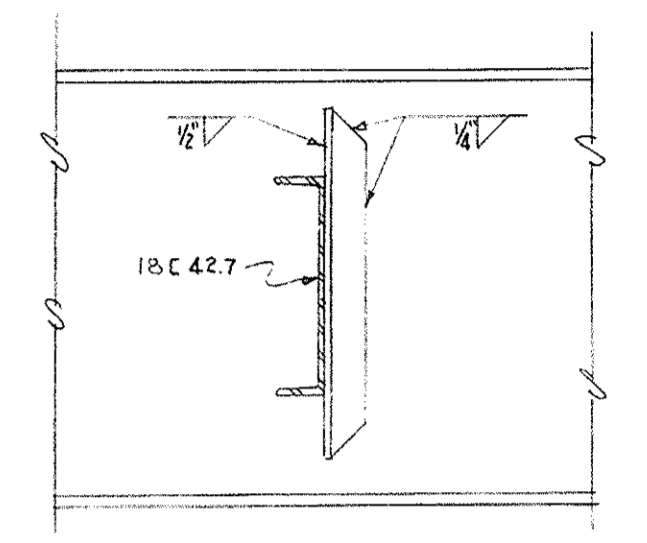
DETAIL A  
SCALE 1/2" = 1'-0"



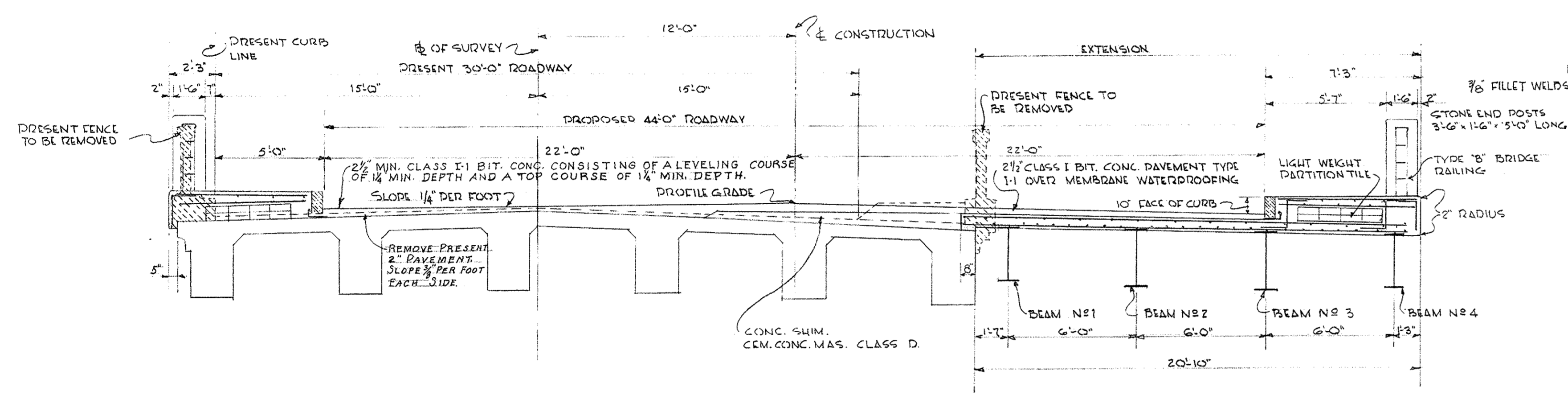
APPROACH SLAB DETAIL TYPICAL FOR EACH ABUTMENT  
SCALE 3/4" = 1'-0"



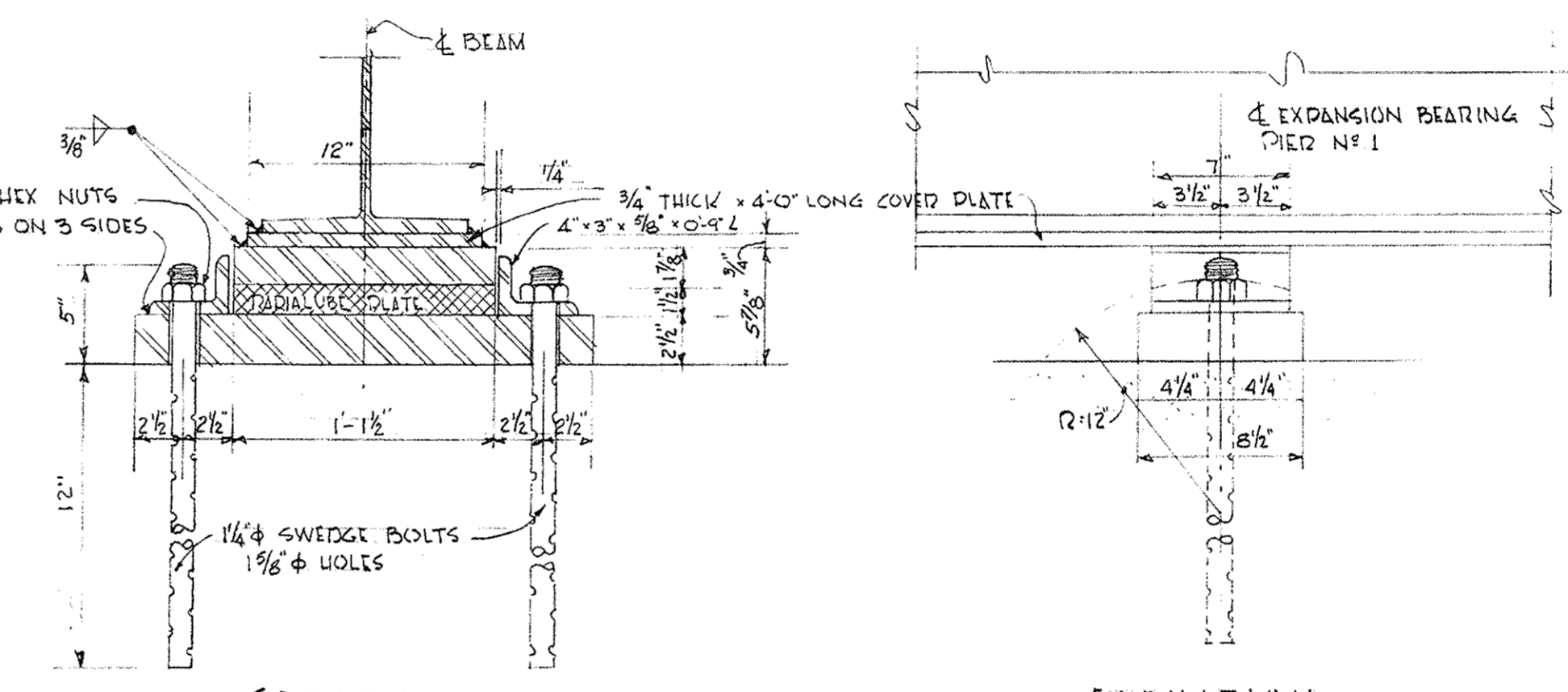
DETAILS - DIAPHRAGM CONNECTIONS  
SCALE 3/4" = 1'-0"



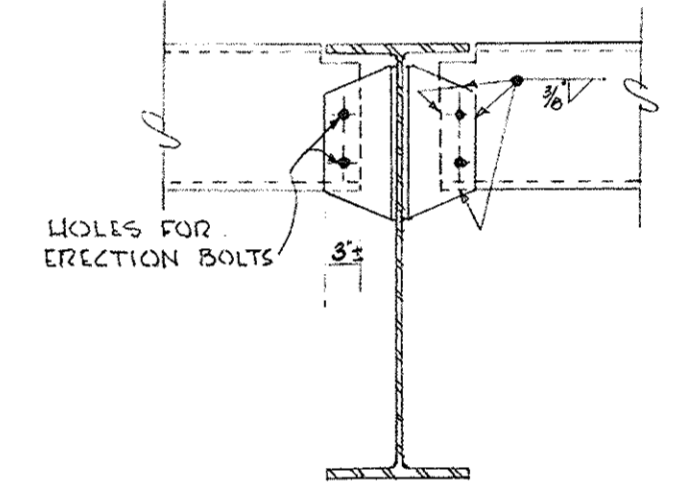
DETAILS - END DIAPHRAGM CONNECTIONS  
SCALE 3/4" = 1'-0"



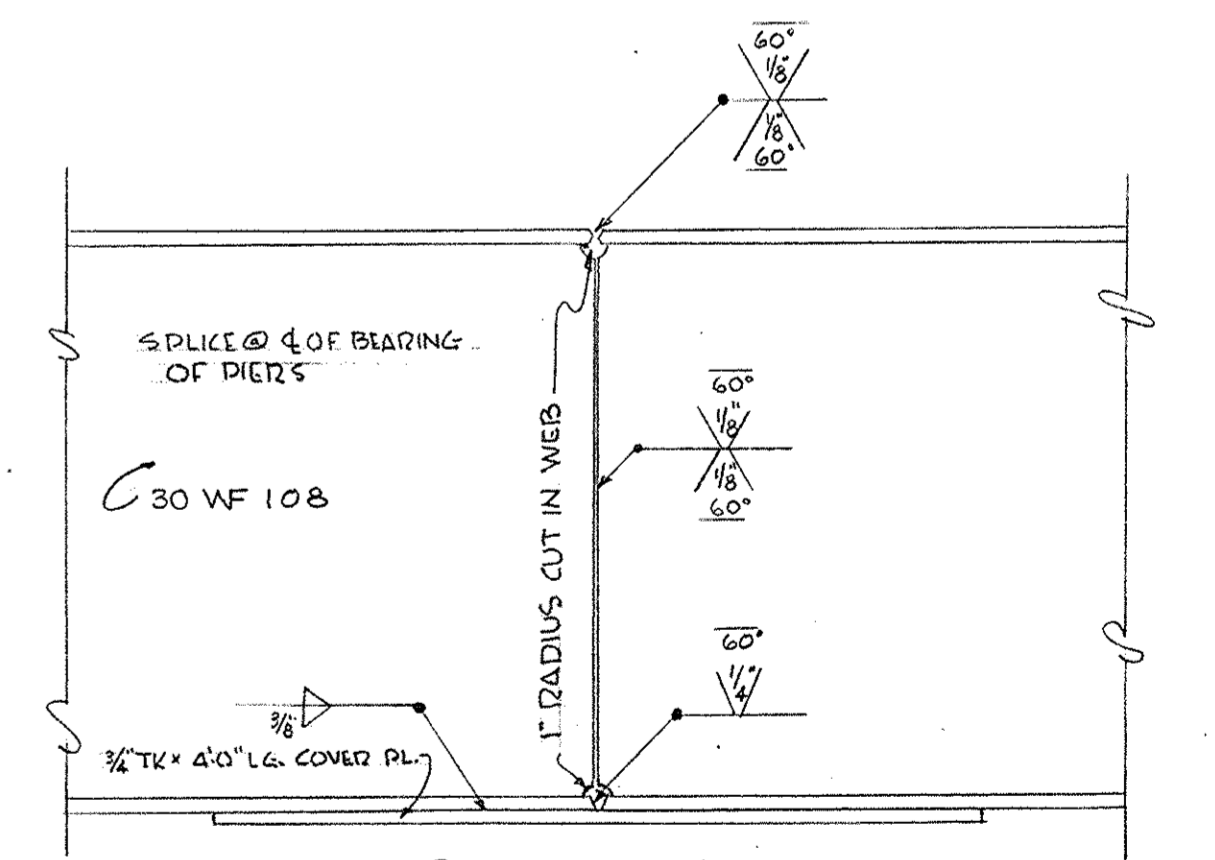
SECTION THRU BRIDGE  
SCALE 1/4" = 1'-0"



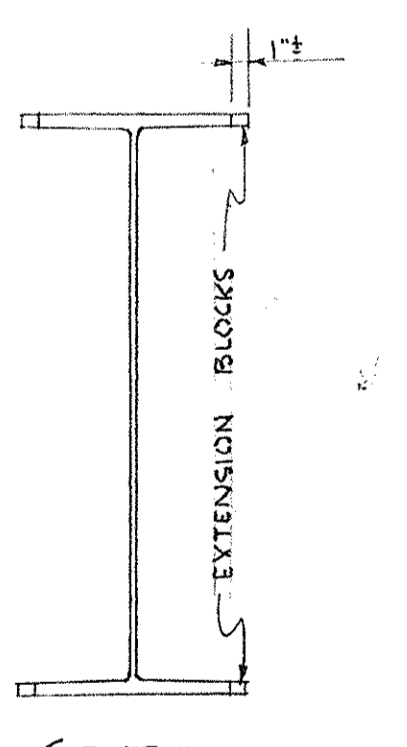
SECTION  
DETAILS OF EXPANSION BEARING - PIER NO 1  
SCALE 1/2" = 1'-0"



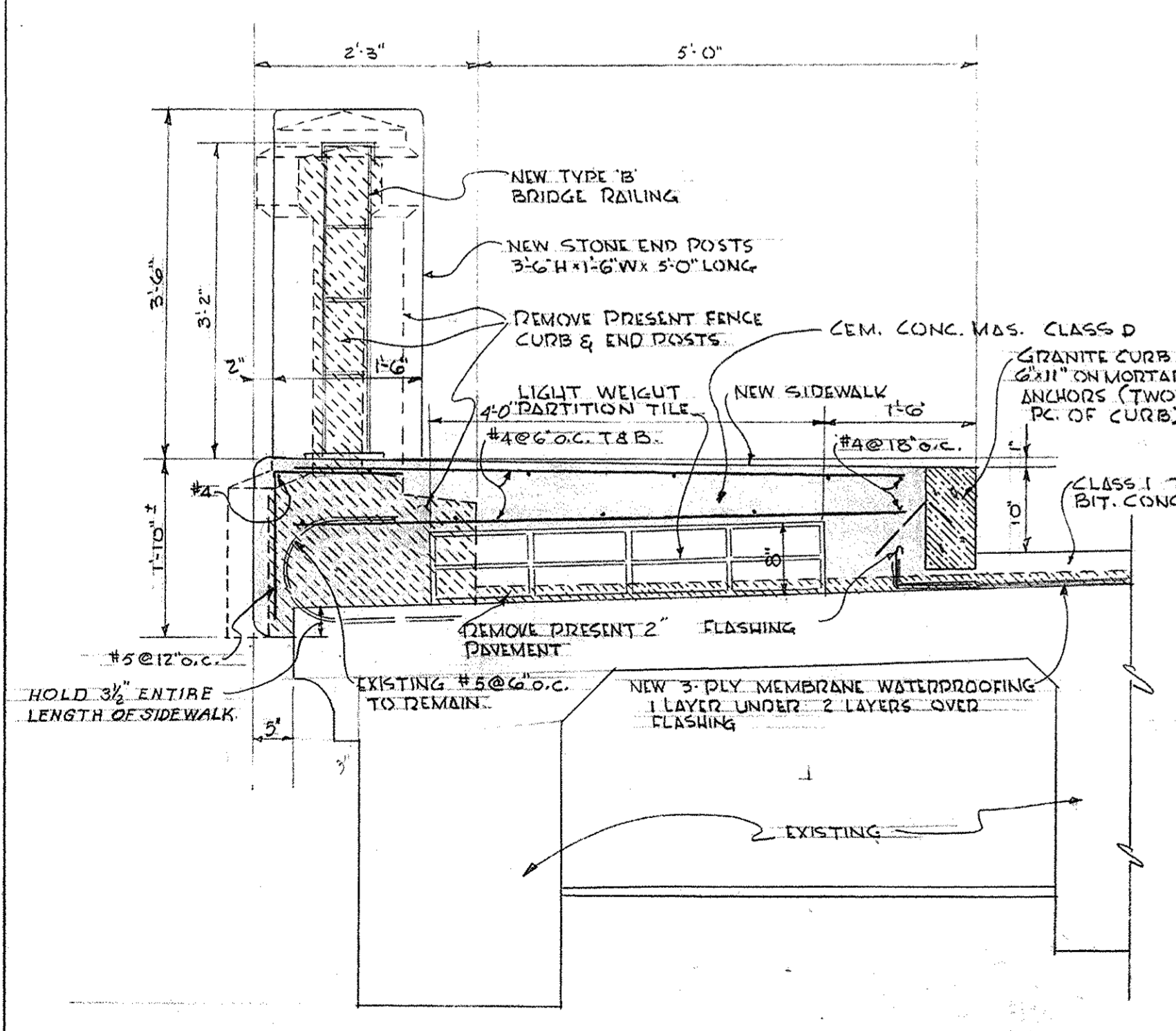
DETAILS - END DIAPHRAGM CONNECTIONS  
SCALE 3/4" = 1'-0"



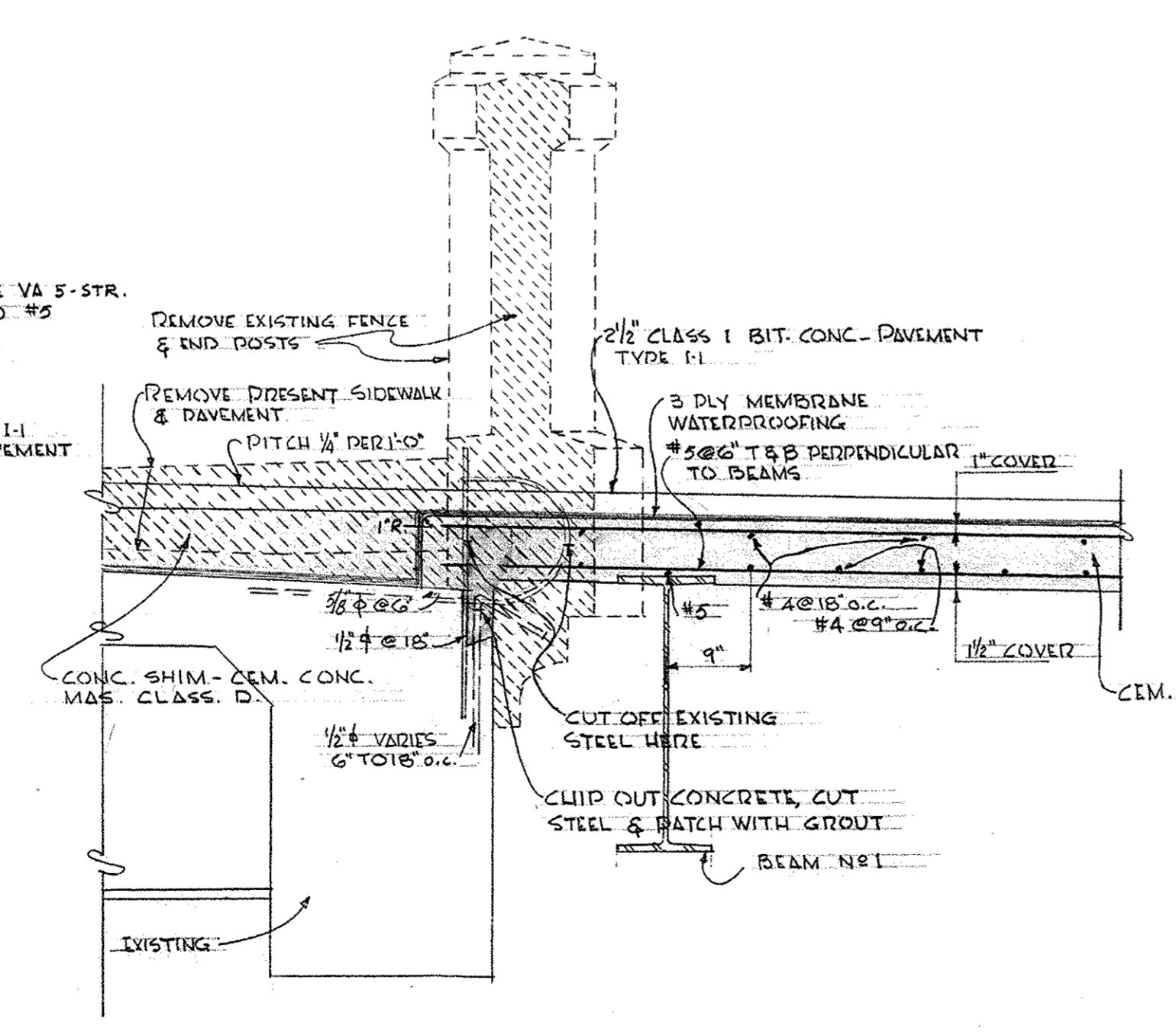
ELEVATION  
BEAM SPlice DETAIL  
LOCATED OVER PIERS  
SCALE 1" = 1'-0"



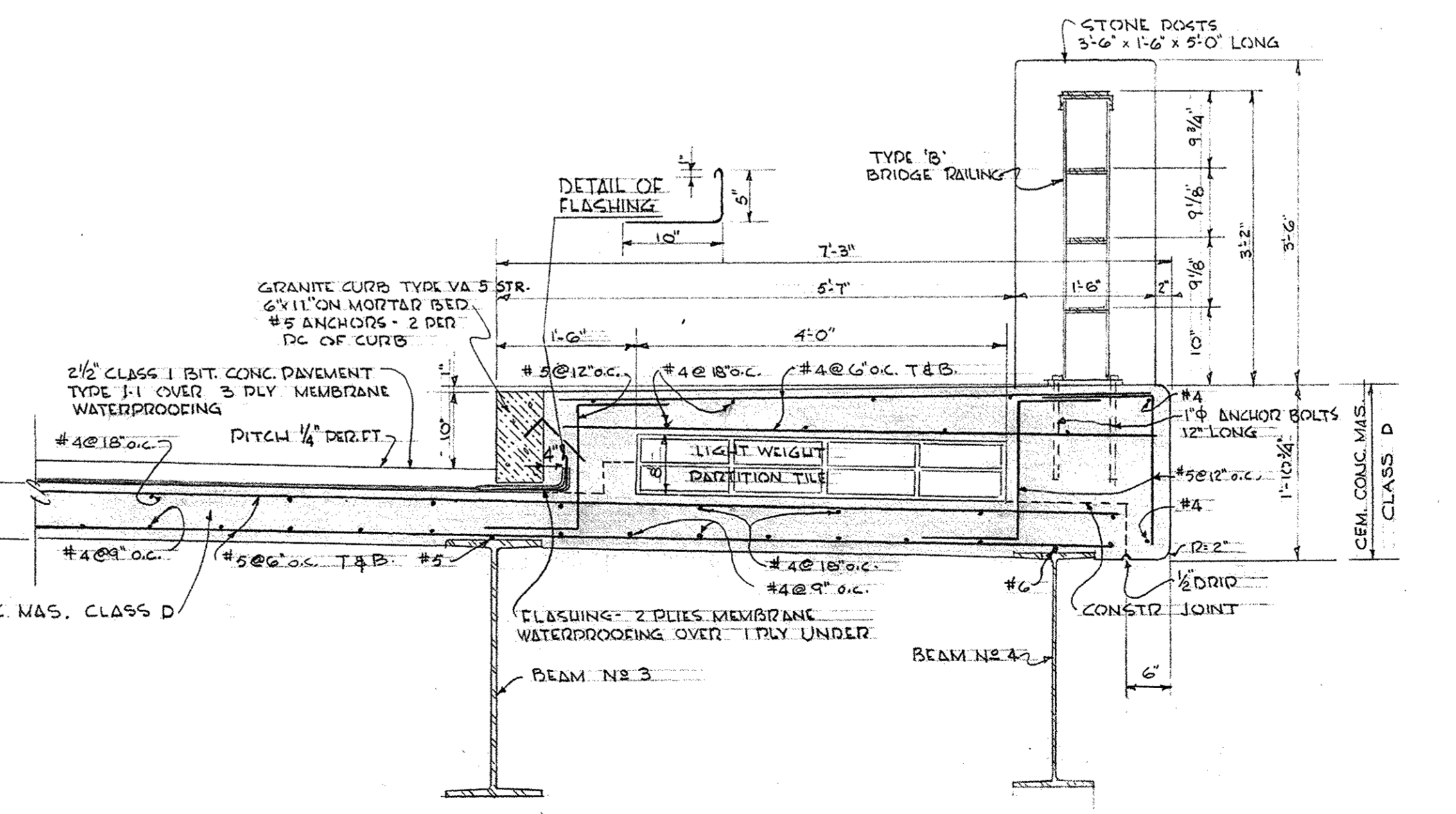
SECTION



SECTION 3/4" = 1'-0"



SECTION 3/4" = 1'-0"



SECTION 3/4" = 1'-0"

DATE	DESCRIPTION
NOV. 3, 1956	ISSUED FOR CONSTRUCTION
	USE ONLY PRINTS OF LATEST DATE