

GENERAL NOTES:

DESIGN:

IN ACCORDANCE WITH THE 9TH EDITION, 2020 AMERICAN ASSOCIATION OF STATE HIGHWAY AND TRANSPORTATION OFFICIALS LRFD BRIDGE DESIGN SPECIFICATIONS WITH INTERIM SPECIFICATIONS THROUGH 2021, FOR H-6 LOADING LIMITED TO EXISTING CAPACITY OF THE EXISTING TRUSS SUPERSTRUCTURE.

SPECIFICATIONS:

STANDARD SPECIFICATIONS, AS REFERRED TO IN THESE DRAWINGS, SHALL REFER TO THE 2024 MASSACHUSETTS DEPARTMENT OF TRANSPORTATION HIGHWAY DIVISION STANDARD SPECIFICATIONS FOR HIGHWAYS AND BRIDGES.

EXISTING CONDITIONS:

THE CONTRACTOR SHALL DETERMINE AND VERIFY ALL PRESENT DIMENSIONS AND DETAILS NECESSARY FOR COMPLETION OF ALL WORK BY FIELD MEASUREMENT AND SURVEY. THE CONTRACTOR SHALL BE RESPONSIBLE FOR THE ADEQUACY AND ACCURACY THEREOF, AND SHALL NOT ORDER ANY MATERIAL OR COMMENCE ANY FABRICATION UNTIL THE REQUIRED MEASUREMENTS HAVE BEEN MADE AND THE EXTENT OF THE PROPOSED WORK HAS BEEN APPROVED BY THE ENGINEER.

PLAN REVISIONS:

IF THERE ARE REVISIONS TO APPROVED PLANS, THE CONTRACTOR SHALL SUBMIT THESE CHANGES TO THE ENGINEER OF RECORD AND MASSDOT FOR THE REVIEW AND APPROVAL PRIOR TO CONSTRUCTION. ONCE THESE REVISIONS ARE APPROVED BY THE MUNICIPALITY'S DESIGNER OF RECORD, THEY SHALL THEN BE SUBMITTED TO MASSDOT FOR FILING.

SCALES:

THESE DRAWINGS WERE FORMATTED FOR 24"x36" PLAN SHEETS. SCALES NOTED ON THE DRAWINGS ARE NOT APPLICABLE TO REDUCED SIZE PRINTS.

UTILITIES:

THE CONTRACTOR SHALL LOCATE AND PROTECT FROM DAMAGE ALL EXISTING UTILITIES.

DEMOLITION:

CONTRACTOR SHALL ENSURE THAT ALL DEMOLITION DEBRIS IS PREVENTED FROM FALLING INTO THE RIVER. ALL DEMOLITION AND CONSTRUCTION SHALL BE ACCOMPLISHED FROM DRY LAND ABOVE AND/OR ADJACENT TO THE BRIDGE, CONTRACTORS SHALL PREVENT CONSTRUCTION EQUIPMENT, CONSTRUCTION MATERIALS, AND CONSTRUCTION DEBRIS FROM ENTERING THE WATER.

THE CONTRACTOR SHALL TAKE ALL PRECAUTIONS NECESSARY NOT TO DAMAGE UTILITIES, EQUIPMENT, STRUCTURES, OR THOSE PORTIONS OF THE STRUCTURE THAT ARE TO REMAIN IN PLACE. ANY PORTION OF THE SUPERSTRUCTURE AND SUBSTRUCTURE TO REMAIN THAT BECOMES DAMAGED AS A RESULT OF THE CONTRACTOR'S OPERATIONS SHALL BE REPAIRED TO THE SATISFACTION OF THE ENGINEER AND AT THE CONTRACTOR'S EXPENSE.

TIMBER:

ALL STRUCTURAL TIMBER DECKING SHALL BE SOUTHERN PINE NO. 1 OR BETTER, WITH MINIMUM TABULATED VALUES OF F_{b0} = 1,350 PSI AND E = 1,400,000 PSI. ALL TIMBER DIMENSIONS ARE NOMINAL. ALL TIMBER TO BE PRESSURE TREATED.

TREATMENT SPECIFICATIONS:

ALL DIMENSIONED CUTS AND HOLES IN TIMBER MATERIAL SHALL BE MADE PRIOR TO PRESSURE TREATMENT. TREAT ALL FIELD CUTS AND BORES WITH COPPER NAPHTHENATE IN ACCORDANCE WITH AWPB SPECIFICATION M4.

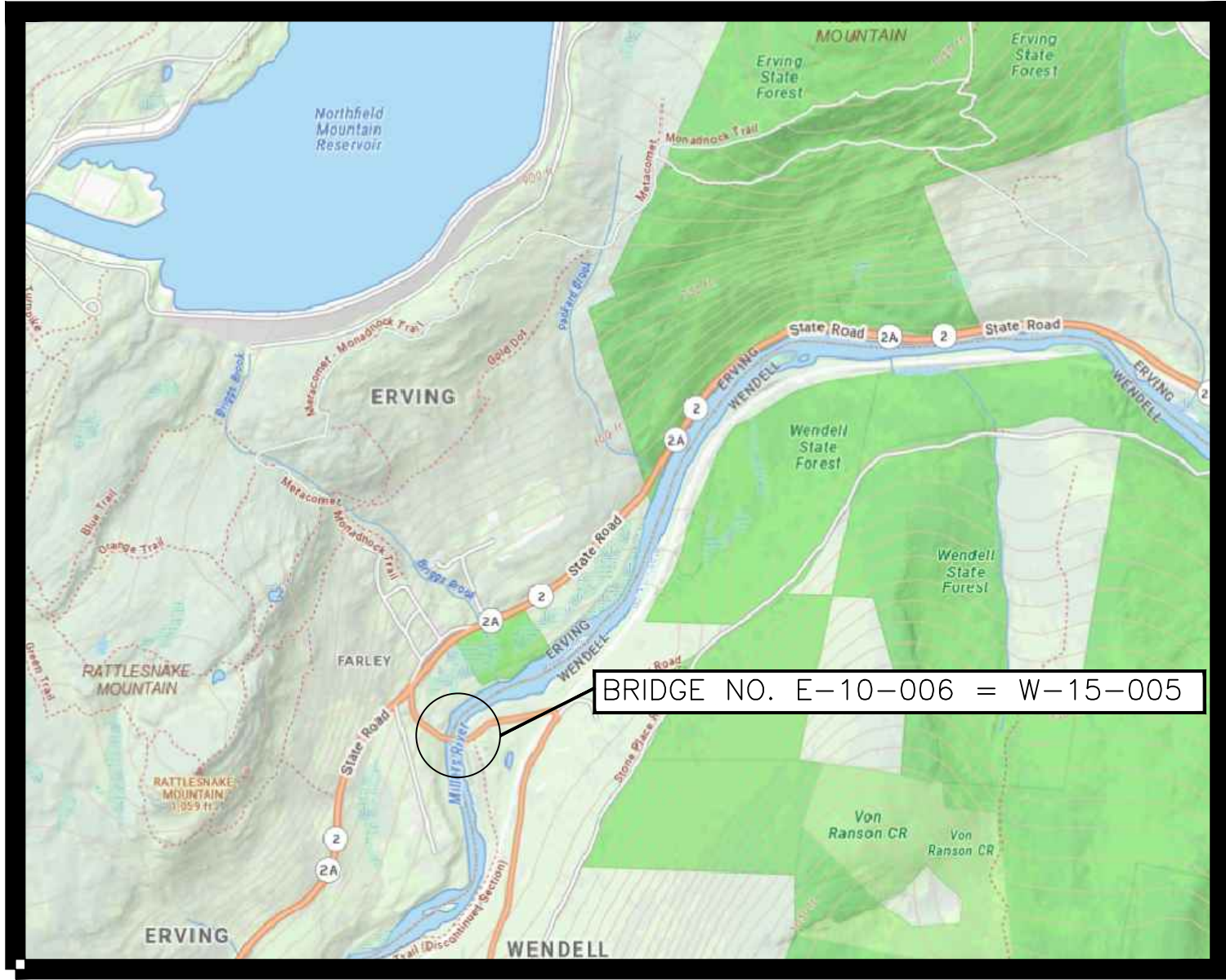
TREAT SAWN LUMBER WITH ALKALINE COPPER QUATERNARY (ACQ-D) TO A MINIMUM NET RETENTION PER AWPB SPECIFICATION U1. USE CATEGORY UC4B. ISSUE CERTIFICATION OF TREATMENT.

STRUCTURAL STEEL:

ALL STRUCTURAL STEEL SHALL CONFORM TO AASHTO M270 GRADE 36. ALL STEEL COMPONENTS AND FASTENERS SHALL BE HOT-DIP GALVANIZED IN ACCORDANCE WITH AASHTO M111 (ASTM A123).

WELDING:

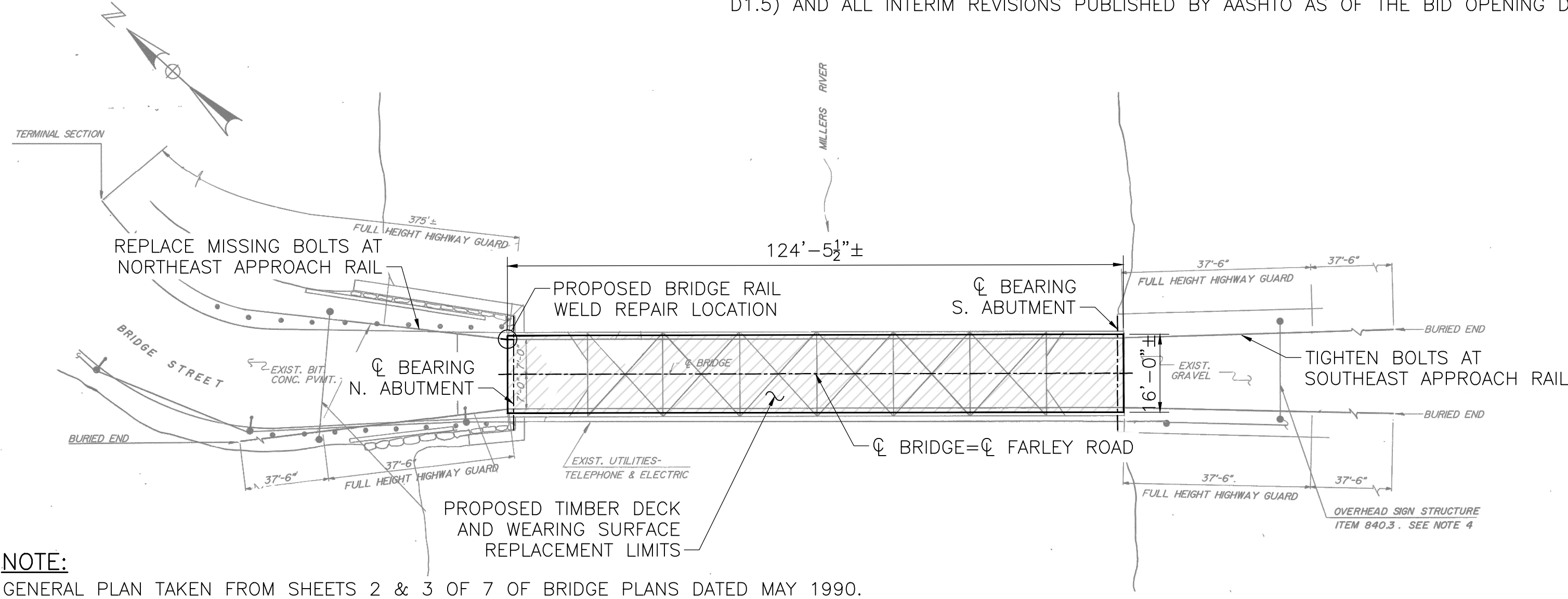
ALL WELDING, AND THE PREPARATION AND ASSEMBLY OF MATERIAL FOR WELDING, SHALL CONFORM TO THE MASSACHUSETTS DEPARTMENT OF TRANSPORTATION STANDARD SPECIFICATIONS FOR HIGHWAYS AND BRIDGES, THE AASHTO STANDARD SPECIFICATIONS FOR HIGHWAY BRIDGES, AND THE AASHTO/AWS BRIDGE WELDING CODE (ANSI/AASHTO AWS D1.5) AND ALL INTERIM REVISIONS PUBLISHED BY AASHTO AS OF THE BID OPENING DATE.



LOCUS
NOT TO SCALE

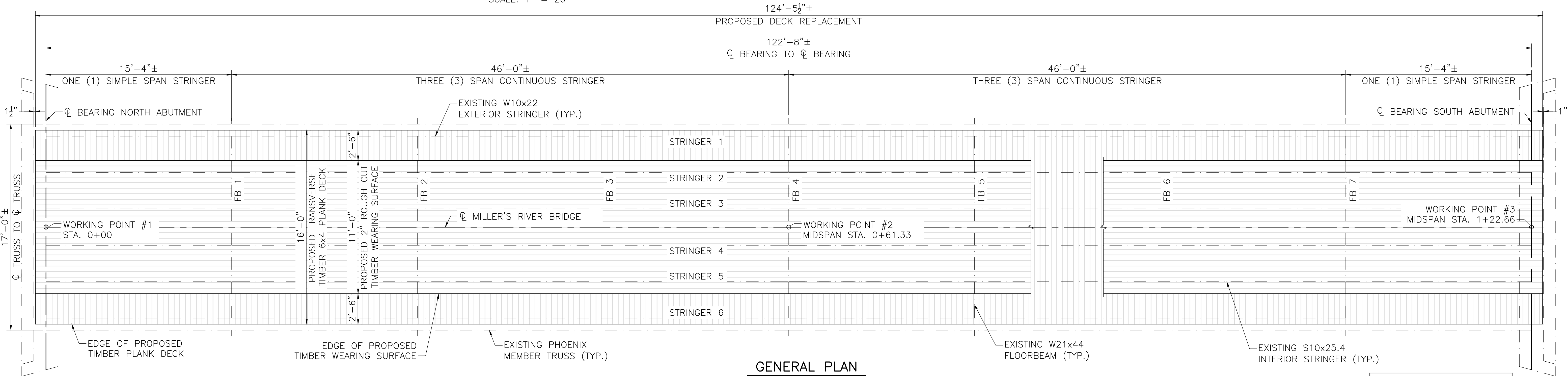
INDEX	
SHEET NO.	DESCRIPTION
1	NOTES, LOCUS, AND REPAIR PLANS
2	CROSS SECTION & DECK REPAIR DETAILS

QUANTITIES			
NO.	ITEM	QUANTITY	UNIT
115.4	DEMOLITION OF DECK BRIDGE NO. E10006=W15005	1	LS
955.1	TREATED TIMBER WEARING SURFACE	3	MBF
955.991	TREATED TIMBER DECK	8	MBF
979.3	STEEL BRIDGE RAILING REPAIRS	1	LS



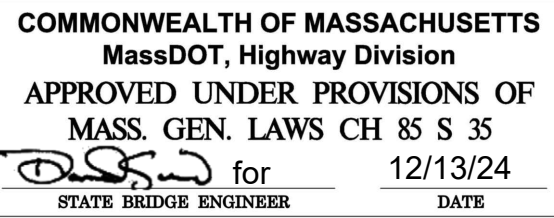
MILLER'S RIVER BRIDGE REPAIR LIMITS

SCALE: 1" = 20'



GENERAL PLAN

SCALE: 1/4" = 1'-0"



PROPOSED DECK REPLACEMENT

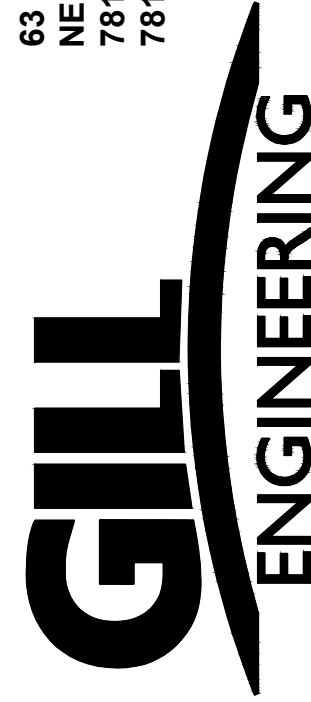
ERVING-WENDELL

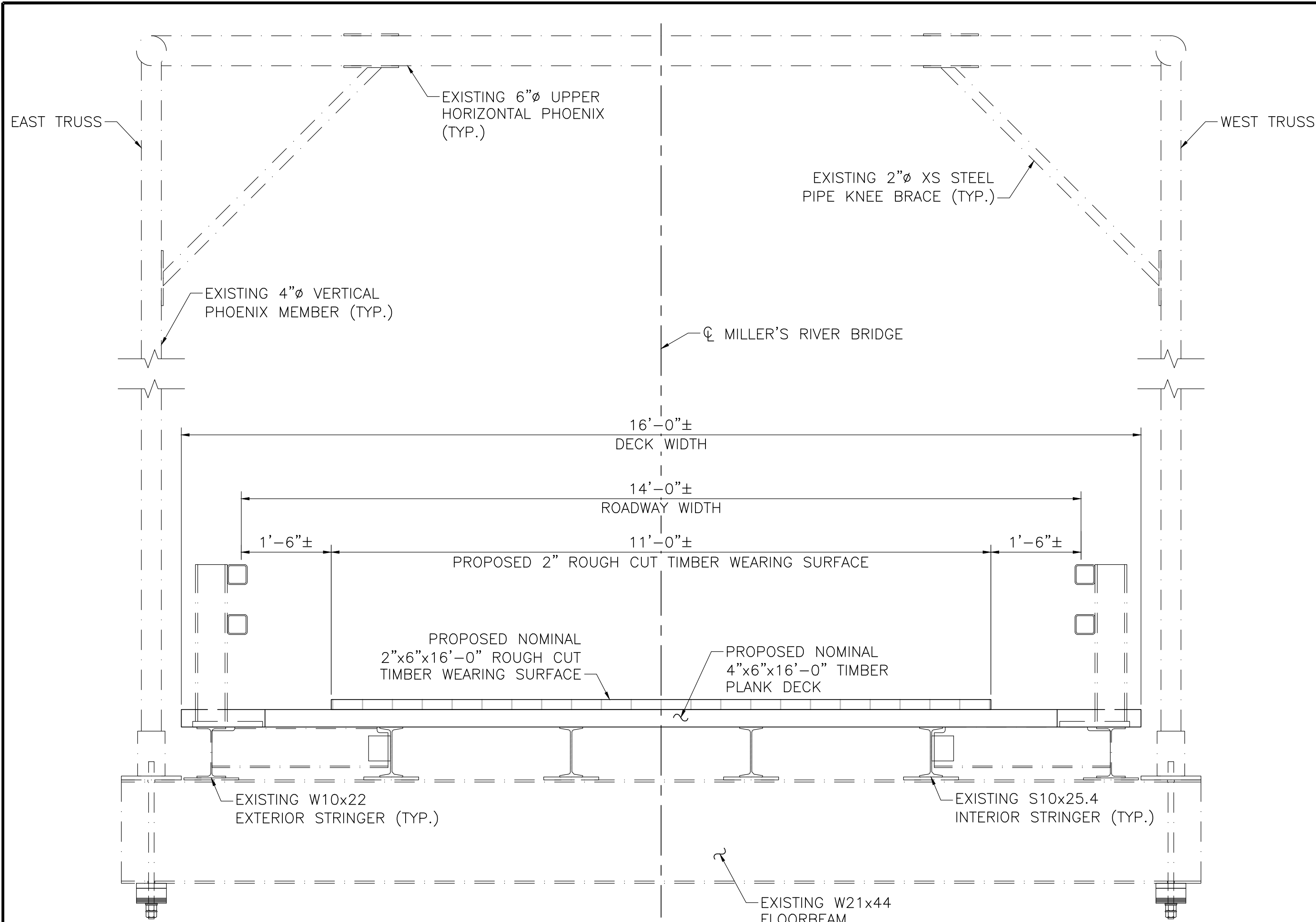
PROPOSED DECK REPLACEMENT FOR
E-10-006 = W-15-005 (OLG)
FARLEY ROAD OVER MILLER'S RIVER

NOTES,
LOCUS, &
REPAIR
PLANS

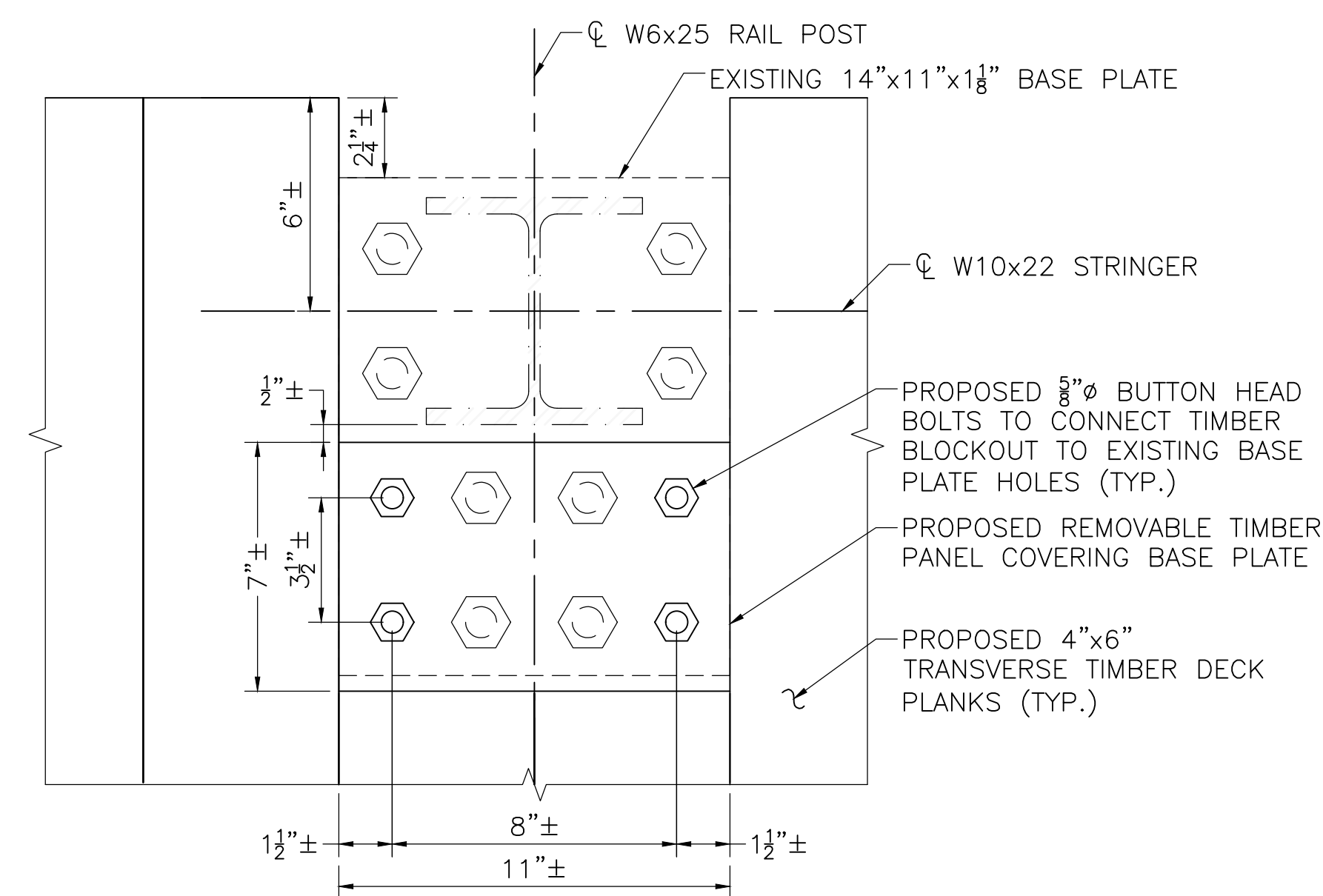
SHEET 1 OF
2

63 KENDRICK STREET
NEEDHAM, MA 02494
781-355-7100
781-355-7101 (FAX)

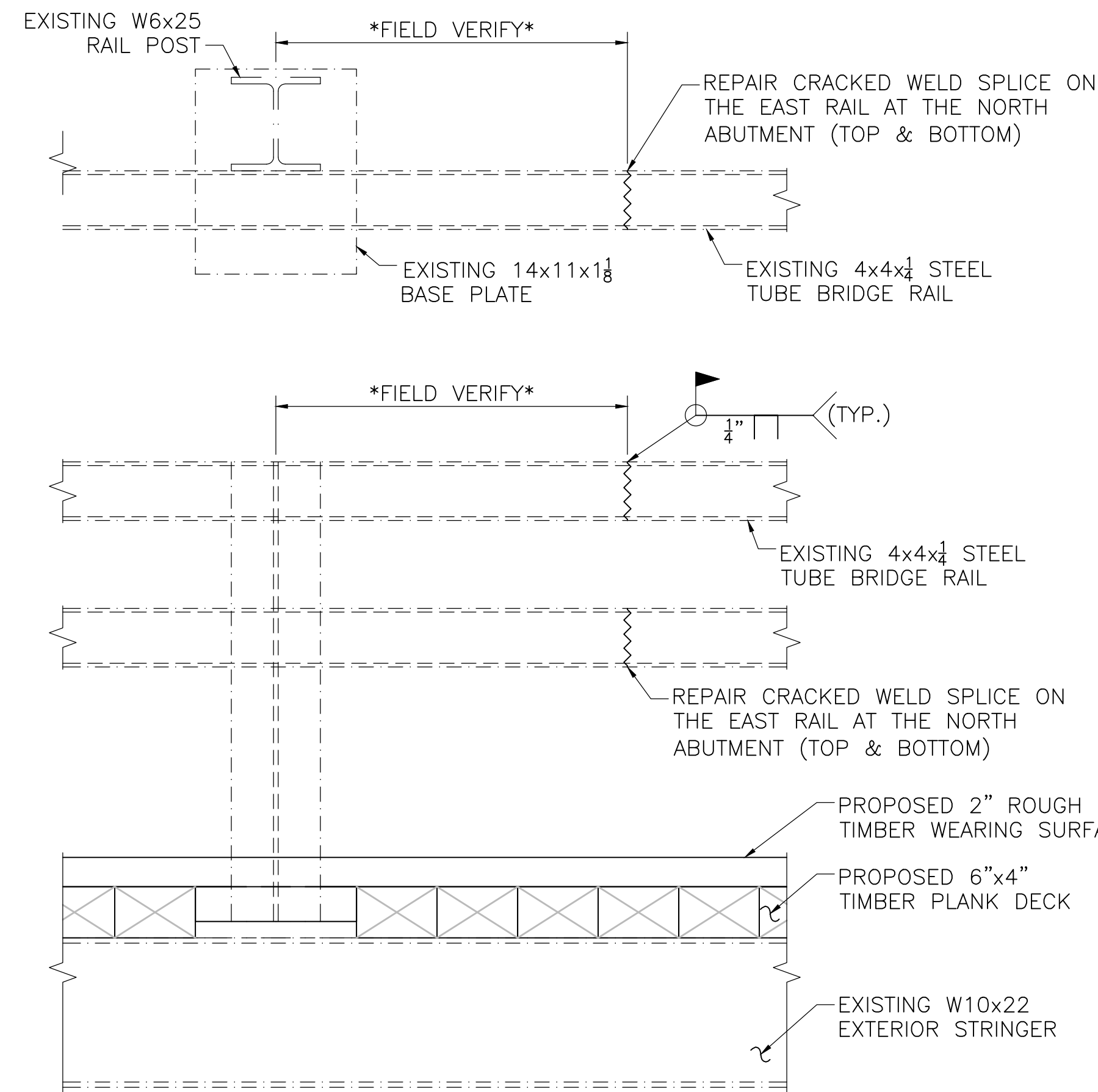




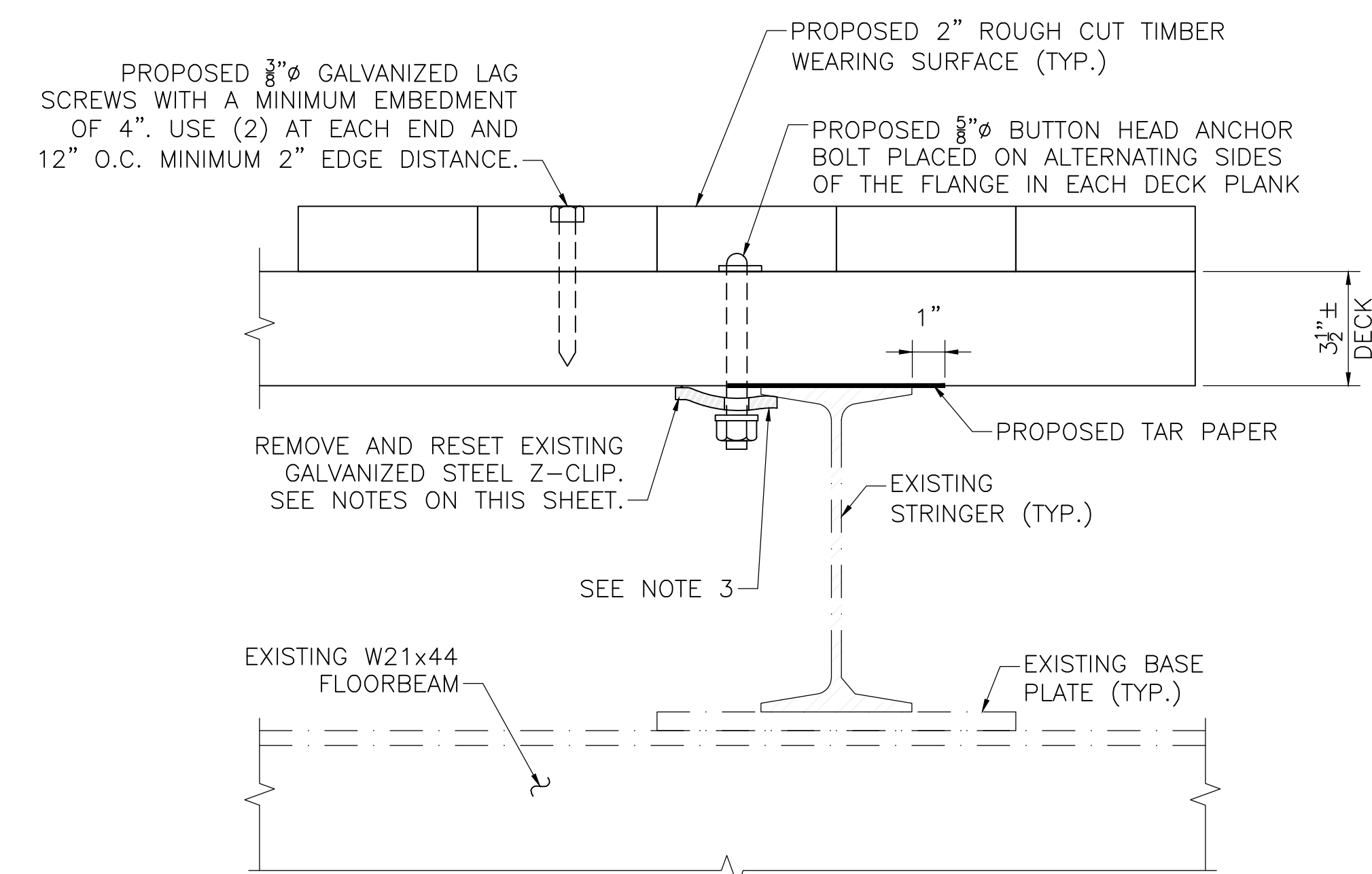
PROPOSED CROSS SECTION — LOOKING SOUTH
SCALE: $\frac{3}{4}$ " = 1'-0"



TIMBER BLOCKOUT OVER BASE PLATE DETAIL
SCALE: 3" = 1'-0"



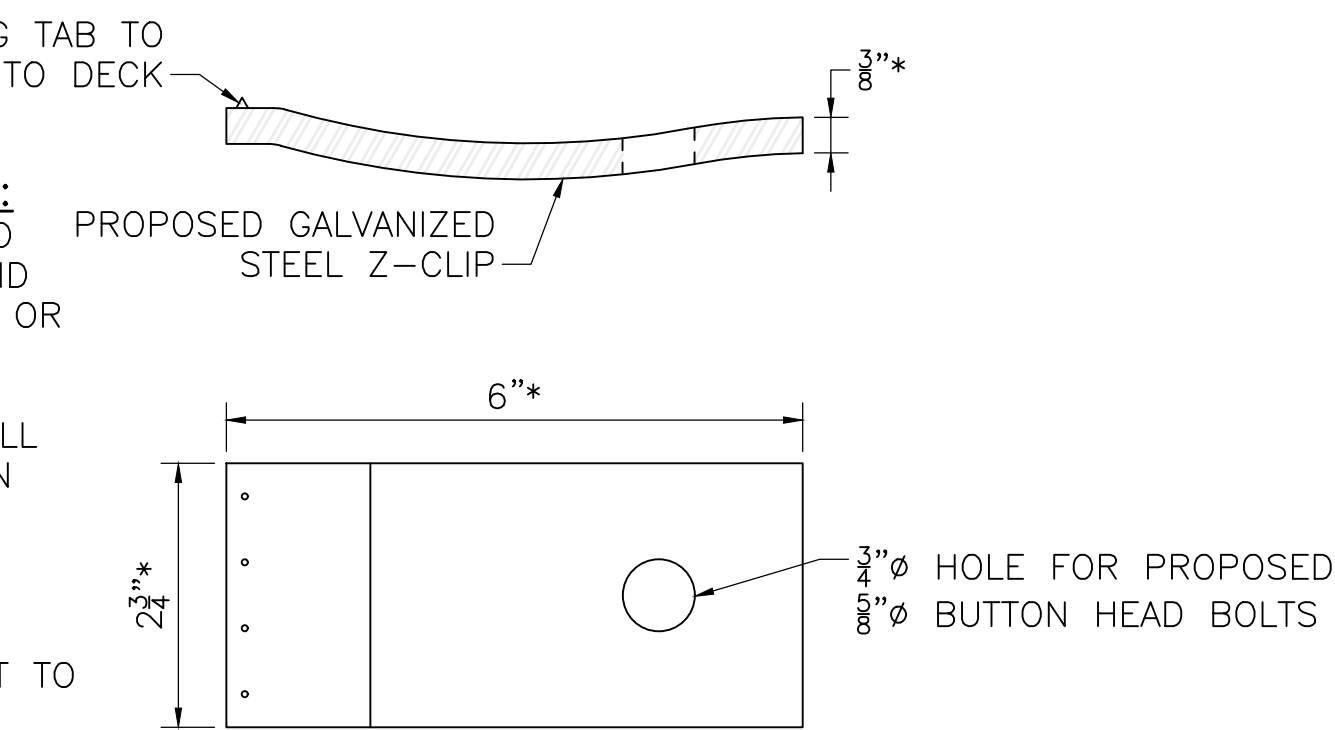
BRIDGE RAIL REPAIR DETAIL
SCALE: $\frac{1}{2}$ " = 1'-0"



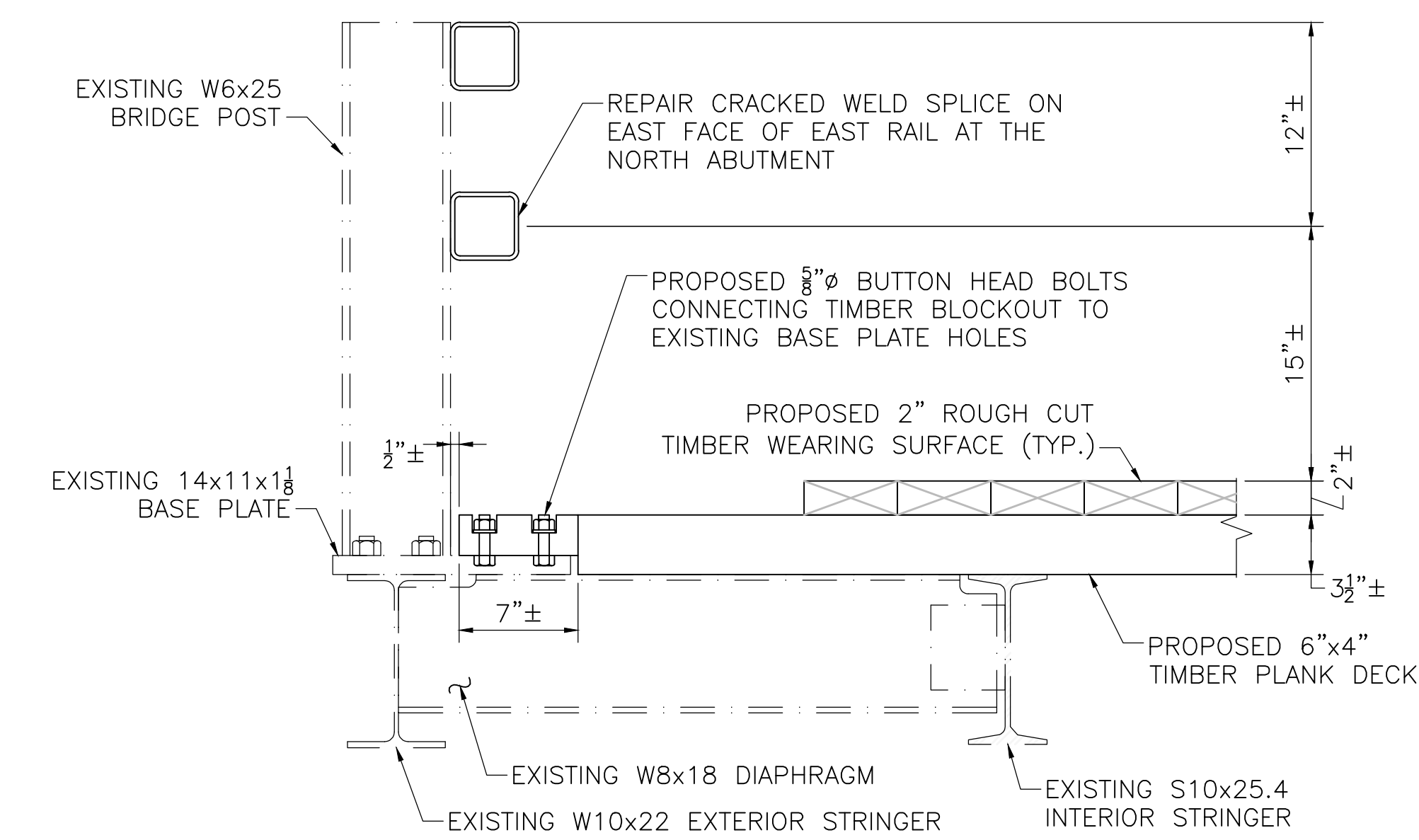
PROPOSED DECK TO STRINGER CONNECTION DETAIL
SCALE: 3" = 1'-0"

- CONNECTION CLIP NOTES:**
- EXISTING CONNECTION CLIPS TO BE RESTORED BY CLEANING AND APPLYING ZINC PAINT COATING OR REGALVANIZING.
 - SEVERELY DAMAGED CLIPS SHALL BE REPLACED PER CONNECTION CLIP DETAIL.
 - SPOT CLEAN AND PAINT HEAVY CORRODED AREAS AT BOTTOM FLANGE WHERE CLIPS CONNECT TO THE FLANGE PER STANDARD SPECIFICATION NO. 961.

* FIELD VERIFY Z-CLIP DIMENSIONS



CONNECTION CLIP DETAIL
SCALE: 6" = 1'-0"



TYPICAL END OF DECK DETAIL
SCALE: $\frac{1}{2}$ " = 1'-0"

COMMONWEALTH OF MASSACHUSETTS
MassDOT, Highway Division
APPROVED UNDER PROVISIONS OF
MASS. GEN. LAWS CH 85 S 35
for 12/13/24
STATE BRIDGE ENGINEER DATE