



LANDSCAPE ITEMS

TREES

KEY	BOTANICAL NAME	COMMON NAME	SIZE	QTY.	SPACING	COMMENTS
Ac.s.	Acer saccharum	Sugar Maple	2"-2 1/2" CAL. B.B.	8	Field Locate	See Note #2
Ca.o.	Carya ovata	Pignut Hickory	1 3/4" - 2" CAL. B.B.	8	Field Locate	See Note #2
C.o.	Celtis occidentalis	Common Hackberry	1 3/4"-2" CAL. B.B.	8	Field Locate	See Note #2
N.s.	Nyssa sylvatica	Black Tupelo	2 1/2"- 3" CAL. B.B.	6	Field Locate	See Note #2
P.r.	Pinus rigida	Pitch Pine	4'-5" HT. B.B.	2	Field Locate	See Note #2
P.s.	Pinus strobus	Eastern White Pine	4'-5" HT. B.B.	3	Field Locate	See Note #2
Q.a.	Quercus alba	White Oak	2 1/2"-3" CAL. B.B.	8	Field Locate	See Note #2
Q.p.	Quercus palustris	Pin Oak	2"-2 1/2" CAL. B.B.	6	Field Locate	See Note #2

PERENNIALS

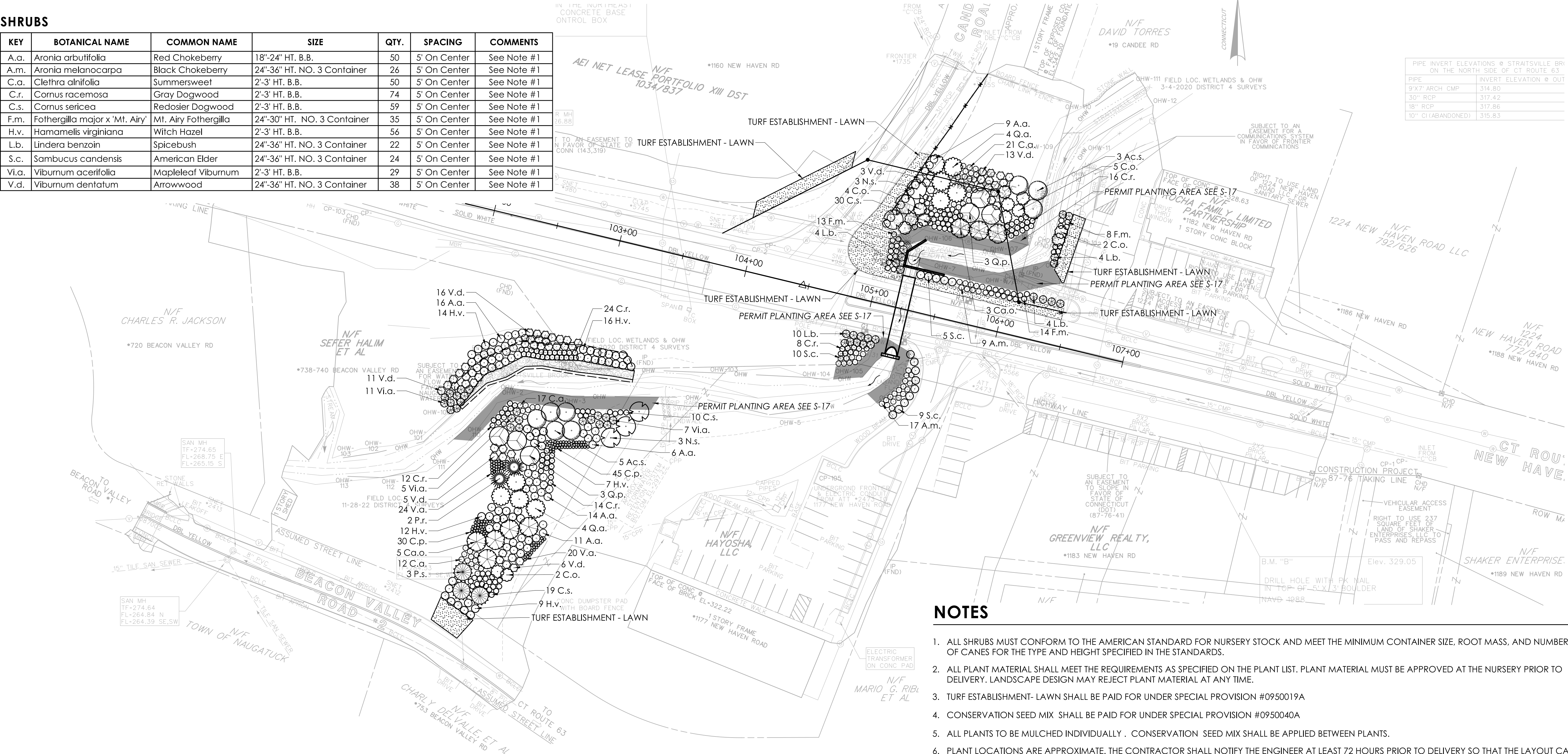
KEY	BOTANICAL NAME	COMMON NAME	SIZE	QTY.	SPACING	COMMENTS
C.p.	Comptonia peregrina	Sweetfern	15"-18" HT. B.B.	75	18" On Center	See Note #1
V.a.	Vaccinium angustifolium	Low Bush Blueberry	18"-24" HT. B.B.	44	18" On Center	See Note #1

SUPPLEMENTAL ITEMS

ITEM #	NAME	QTY.	COMMENTS
0949000	Wood Chip Mulch	1,388 S.Y.	See Note #5
0950021A	Turf Establishment - Lawn	482 S.Y.	See Note #3
0950040A	Conservation Seed Mix for Slopes	843 S.Y.	See Note # 4,5

SHRUBS

KEY	BOTANICAL NAME	COMMON NAME	SIZE	QTY.	SPACING	COMMENTS
A.a.	Aronia arbutifolia	Red Chokeberry	18"-24" HT. B.B.	50	5' On Center	See Note #1
A.m.	Aronia melanocarpa	Black Chokeberry	24"-36" HT. NO. 3 Container	26	5' On Center	See Note #1
C.a.	Clethra alnifolia	Summersweet	2'-3' HT. B.B.	50	5' On Center	See Note #1
C.r.	Cornus racemosa	Gray Dogwood	2'-3' HT. B.B.	74	5' On Center	See Note #1
C.s.	Cornus sericea	Redosier Dogwood	2'-3' HT. B.B.	59	5' On Center	See Note #1
F.m.	Fothergilla major x 'Mt. Airy'	Mt. Airy Fothergilla	24"-30" HT. NO. 3 Container	35	5' On Center	See Note #1
H.v.	Hamamelis virginiana	Witch Hazel	2'-3' HT. B.B.	56	5' On Center	See Note #1
L.b.	Lindera benzoin	Spicebush	24"-36" HT. NO. 3 Container	22	5' On Center	See Note #1
S.c.	Sambucus canadensis	American Elder	24"-36" HT. NO. 3 Container	24	5' On Center	See Note #1
Vi.a.	Viburnum acerifolia	Mapleleaf Viburnum	2'-3' HT. B.B.	29	5' On Center	See Note #1
V.d.	Viburnum dentatum	Arrowwood	24"-36" HT. NO. 3 Container	38	5' On Center	See Note #1

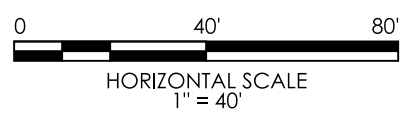


NOTES

- ALL SHRUBS MUST CONFORM TO THE AMERICAN STANDARD FOR NURSERY STOCK AND MEET THE MINIMUM CONTAINER SIZE, ROOT MASS, AND NUMBER OF CANES FOR THE TYPE AND HEIGHT SPECIFIED IN THE STANDARDS.
- ALL PLANT MATERIAL SHALL MEET THE REQUIREMENTS AS SPECIFIED ON THE PLANT LIST. PLANT MATERIAL MUST BE APPROVED AT THE NURSERY PRIOR TO DELIVERY. LANDSCAPE DESIGN MAY REJECT PLANT MATERIAL AT ANY TIME.
- TURF ESTABLISHMENT- LAWN SHALL BE PAID FOR UNDER SPECIAL PROVISION #0950019A
- CONSERVATION SEED MIX SHALL BE PAID FOR UNDER SPECIAL PROVISION #0950040A
- ALL PLANTS TO BE MULCHED INDIVIDUALLY . CONSERVATION SEED MIX SHALL BE APPLIED BETWEEN PLANTS.
- PLANT LOCATIONS ARE APPROXIMATE. THE CONTRACTOR SHALL NOTIFY THE ENGINEER AT LEAST 72 HOURS PRIOR TO DELIVERY SO THAT THE LAYOUT CAN BE SCHEDULED WITH LANDSCAPE DESIGN UNIT.
- SHOULD ANY OF THE CONTRACT PLANT ITEMS BE FOUND UNAVAILABLE IN THE REGION, THE CONTRACTOR SHALL SUBMIT A PLANT MATERIAL RFC PRIOR TO THE PLANT MATERIALS SUBMITTAL PACKAGE. CONTRACTOR MAY PROPOSE SUBSTITUTION OF SIMILAR SPECIES FOR PLANT ITEMS NOT AVAILABLE.

REV.	DATE	REVISION DESCRIPTION

SIGNATURE BLOCK:	
DESIGNER/DRAFTER: JM	CHECKED BY: MV



CONNECTICUT  
DEPARTMENT OF  
TRANSPORTATION

PROJECT TITLE:
REHABILITATION OF BRIDGE NO. 06772 CARRYING ROUTE 63 OVER STRAITSVILLE BROOK

TOWN(S):
NAUGATUCK

DRAWING TITLE:
LANDSCAPE PLAN

PROJECT NO.:	DRAWING NO.:
0087-0148	LDS-01
SHEET NO.: 05.02	