

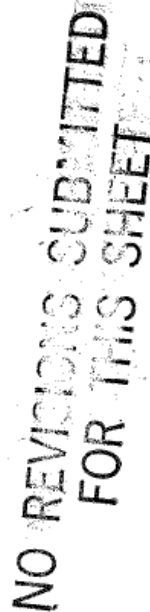
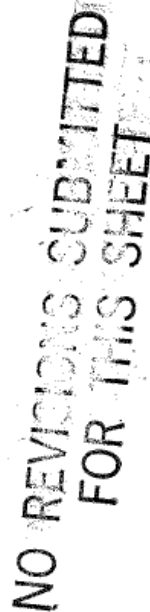
**12 - FOR INFORMATION ONLY - RECORD PLANS  
INDEX OF DRAWINGS**

DRAWING NUMBER	DRAWING TITLE	DRAWING NUMBER	DRAWING TITLE
RP-01	INDEX OF DRAWINGS - FIO - RECORD PLANS	RP-10	FIO - RECORD PLANS
RP-02	FIO - RECORD PLANS		
RP-03	FIO - RECORD PLANS		
RP-04	FIO - RECORD PLANS		
RP-05	FIO - RECORD PLANS		
RP-06	FIO - RECORD PLANS		
RP-07	FIO - RECORD PLANS		
RP-08	FIO - RECORD PLANS		
RP-09	FIO - RECORD PLANS		

REV.	DATE	REVISION DESCRIPTION	

SIGNATURE BLOCK:	 <b>CONNECTICUT DEPARTMENT OF TRANSPORTATION</b>	PROJECT TITLE:  <b>REMOVAL OF I-84 EASTBOUND EXIT 21 OFF-RAMP</b>	TOWN(S):  <b>WATERBURY</b>	DRAWING TITLE:  <b>INDEX OF DRAWINGS - FIO - RECORD PLANS</b>	PROJECT NO.:  <b>0151-0340</b>	DRAWING NO.: <b>RP-01</b>
						SHEET NO.: 12.01
DESIGNER/DRAFTER: TEY	CHECKED BY: MEA					

NO REVISIONS SUBMITTED  
FOR THIS SHEET



NO REVISIONS SUBMITTED  
FOR THIS SHEET

NO REVISIONS SUBMITTED  
FOR THIS SHEET

NO REVISIONS SUBMITTED  
FOR THIS SHEET

NO REVISIONS SUBMITTED  
FOR THIS SHEET

NO REVISIONS SUBMITTED  
FOR THIS SHEET

NO REVISIONS SUBMITTED  
FOR THIS SHEET

NO REVISIONS SUBMITTED  
FOR THIS SHEET

NO REVISIONS SUBMITTED  
FOR THIS SHEET

NO REVISIONS SUBMITTED  
FOR THIS SHEET

NO REVISIONS SUBMITTED  
FOR THIS SHEET

NO REVISIONS SUBMITTED  
FOR THIS SHEET

NO REVISIONS SUBMITTED  
FOR THIS SHEET

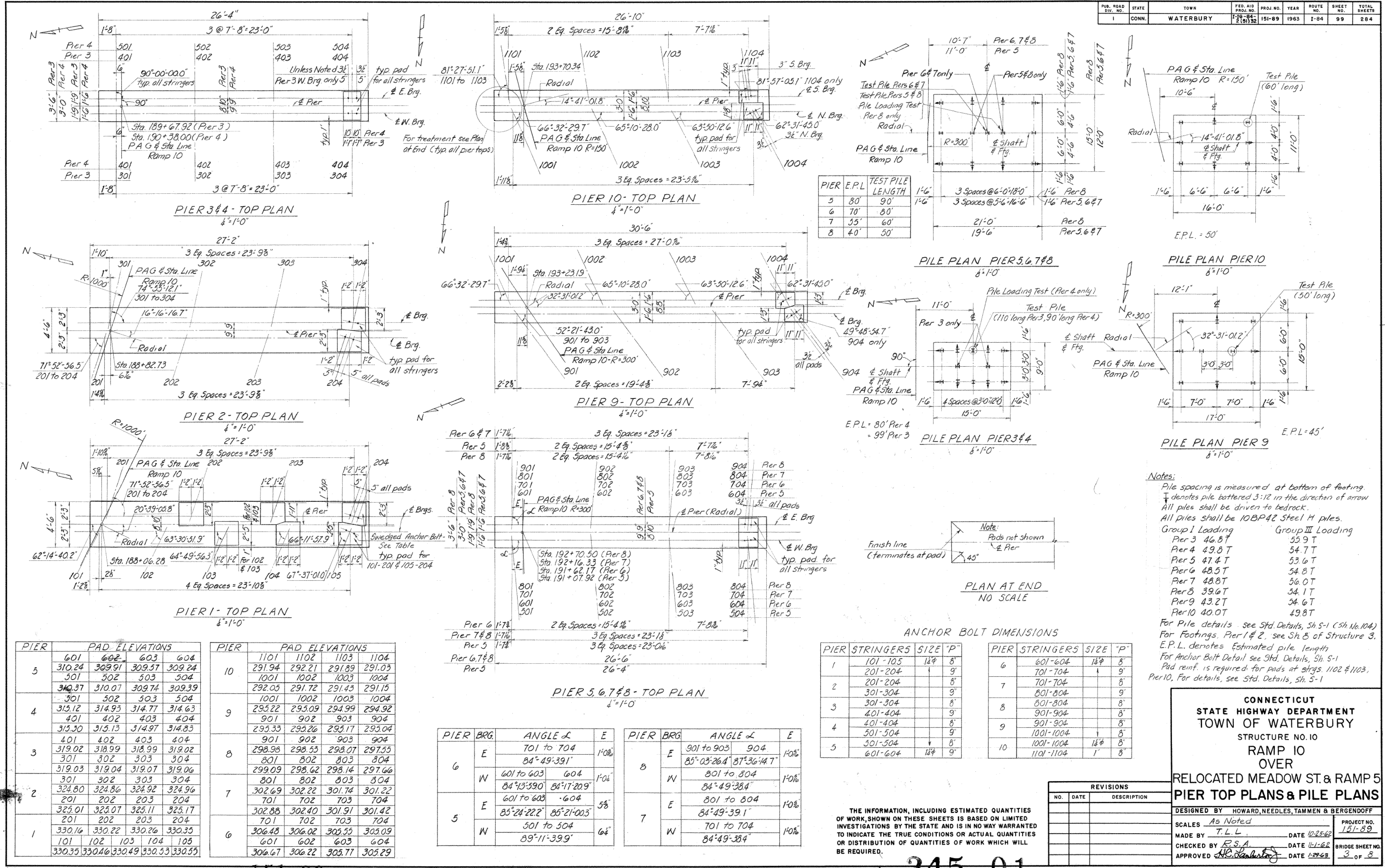
NO REVISIONS SUBMITTED  
FOR THIS SHEET

NO REVISIONS SUBMITTED  
FOR THIS SHEET

NO REVISIONS SUBMITTED  
FOR THIS SHEET

NO REVISIONS SUBMITTED  
FOR THIS SHEET





Notes:

Pile spacing is measured at bottom of footing  
↑ denotes pile battered 3:12 in the direction of arrow  
All piles shall be driven to bedrock.  
All piles shall be 10BPA2 Steel H piles.

Group I Loading	Group III Loading
Pier 3 46.8 T	55.9 T
Pier 4 49.8 T	54.7 T
Pier 5 47.4 T	53.6 T
Pier 6 48.5 T	54.8 T
Pier 7 48.8 T	56.0 T
Pier 8 39.6 T	54.1 T
Pier 9 43.2 T	54.6 T
Pier 10 40.0 T	49.8 T

For Pile details see Std. Details, Sh S-1 (Sh No. 104)  
For Footings, Pier 1 & 2, see Sh 8 of Structure 3.  
E.P.L. denotes Estimated pile length  
For Anchor Bolt Detail see Std. Details, Sh S-1  
Pad reinf. is required for pads at strgs. 1102 & 1103,  
Pier 10, For details, see Std. Details, Sh S-1

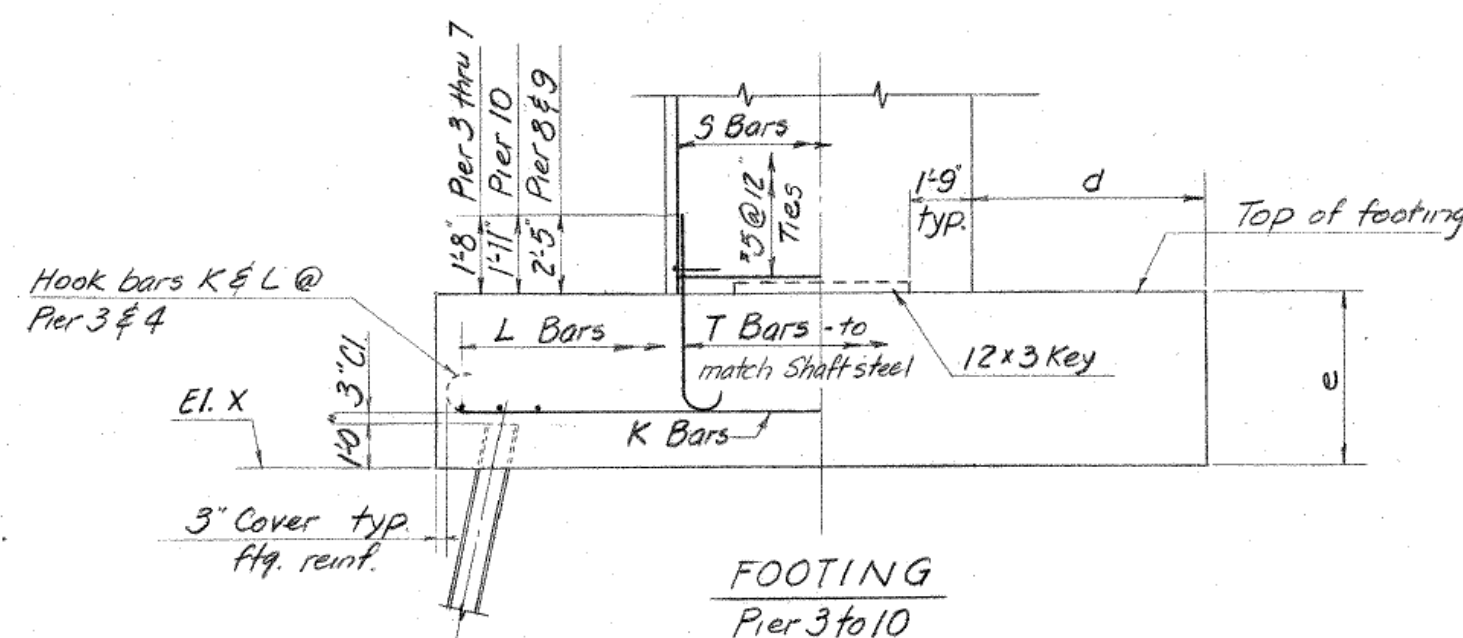
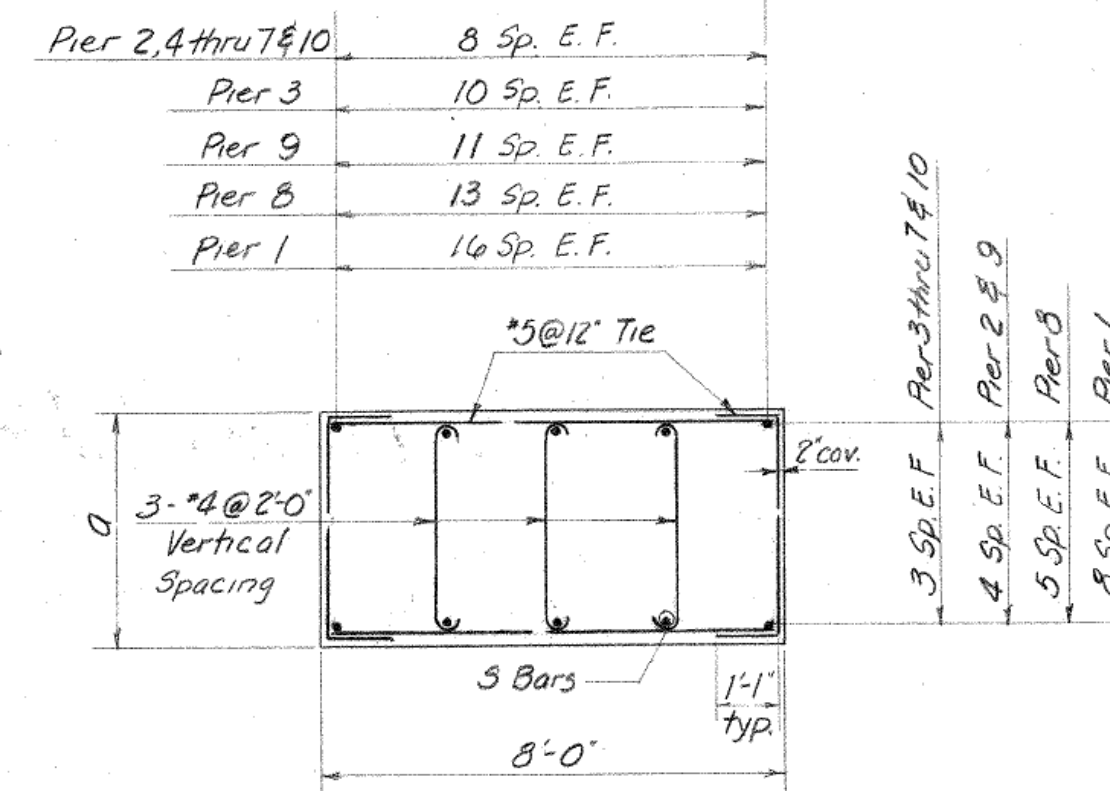
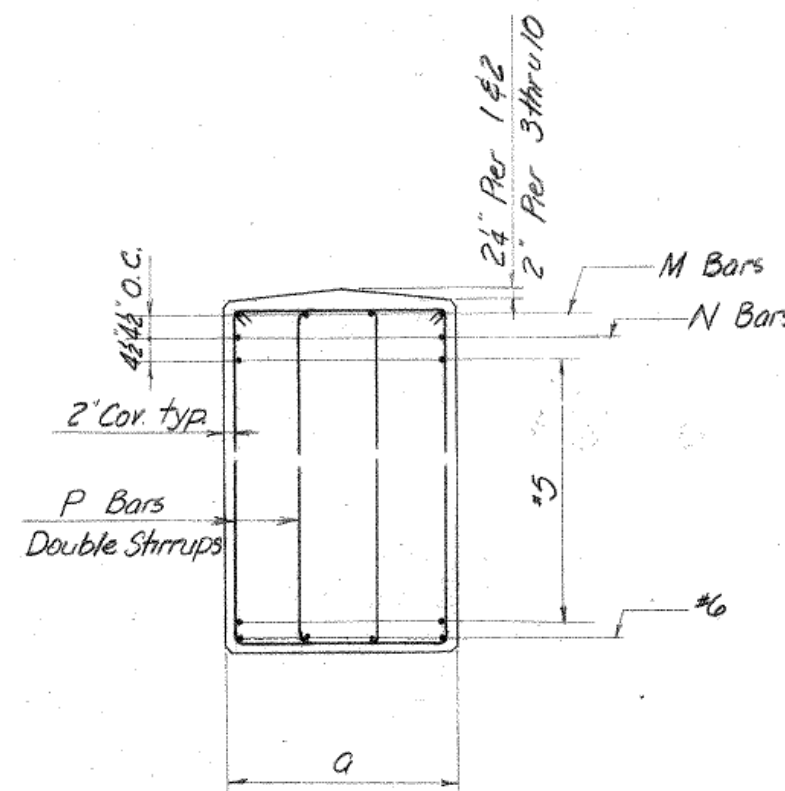
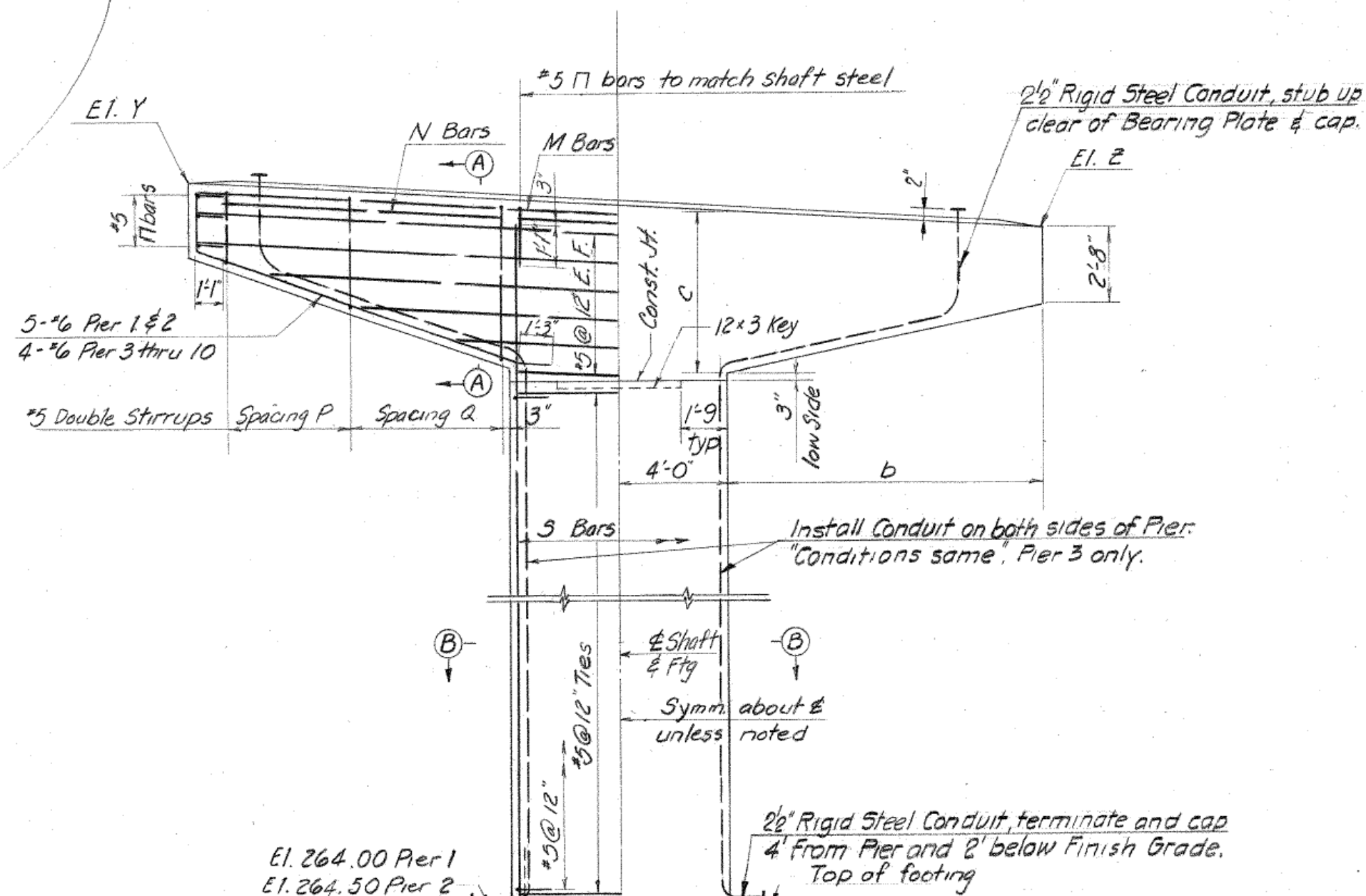
<b>CONNECTICUT</b> <b>STATE HIGHWAY DEPARTMENT</b> <b>TOWN OF WATERBURY</b>  <b>STRUCTURE NO. 10</b>  <b>RAMP 10</b> <b>OVER</b>  <b>RELOCATED RAMP 5 &amp; RAMP 5</b> <b>PIER TOP PLANS &amp; PILE PLANS</b>	
<b>DESIGNED BY</b> HOWARD, NEEDLES, TAMMEN & BERGENDOFF	
<b>SCALES</b> <i>As Noted</i>	<b>PROJECT NO.</b> <b>151-89</b>
<b>MADE BY</b> <i>T.L.L.</i>	<b>DATE</b> <i>10-25-68</i>
<b>CHECKED BY</b> <i>E.S.A.</i>	<b>DATE</b> <i>11-16-68</i>
<b>APPROVED</b> <i>[Signature]</i>	<b>DATE</b> <i>1-29-69</i>
<b>BRIDGE SHEET NO.</b> <b>3 OF 8</b>	

**FOR INFORMATION ONLY**



NO REVISIONS SUBMITTED  
FOR THIS SHEET

PUB. ROAD DIV. NO.	STATE	TOWN	FED. AID PROJ. NO.	PROJ. NO.	YEAR	ROUTE NO.	SHEET NO.	TOTAL SHEETS
1	CONN.	WATERBURY	1-18-84 2(50)32	151-89	1963	1-84	100	284



PIER NO.	DIMENSION					ELEVATION			REINFORCEMENT									
	a	b	c	d	e	X	Y	Z	K BARS	L BARS	T BARS	S BARS	N BARS	M BARS	SPACING P	SPACING Q		
1	4'-6"	9'-7"	5'-10"	-	-	-	329.87	330.03	-	-	-	18'-7"	4'-11" x 21'-0"	7'-11"	4@9"	5@12"		
2	4'-6"	9'-7"	5'-10"	-	-	-	324.50	324.68	-	-	-	24'-10"	4'-11" x 21'-0"	7'-11"	4@9"			
3	3'-6"	9'-2"	5'-9"	3'-6"	4'-0"	284.00	318.73	318.73	10'-8"	18'-7"	26'-8"	26'-8"	3'-11" x 19'-6"	7'-11"	4@8"			
4	3'-0"	9'-2"		3'-6"	4'-0"	281.00	314.89	314.20	10'-8"	17'-8"	22'-8"	22'-8"	4'-11" x F.L.	5'-11"	4@8"			
5		9'-2"		3'-9"	4'-6"	275.50	310.04	308.87	14'-10"	21'-8"			4'-11" x F.L.		5@7"			
6		9'-3"		5'-9"		272.50	306.28	304.67	13'-11"	20'-8"			3'-11" x 20'-6"		4@8"			
7	3'-0"	9'-3"		5'-9"		266.50	302.49	300.79	13'-11"	20'-8"	22'-8"	22'-8"	3'-11" x 20'-6"	5'-11"	4@8"			
8	3'-6"	9'-3"	5'-9"	6'-6"	4'-6"	259.50	298.79	297.14	15'-11"	26'-9"	36'-11"	36'-11"	2'-11" x 17'-6"	6'-11"	3@10"	5@12"		
9	3'-0"	11'-3"	6'-5"	4'-6"	4'-0"	267.50	294.98	294.56	19'-9"	24'-9"	30'-11"	30'-11"	4'-11" x 24'-0"	5'-11"	5@9"	6@12"		
10	3'-0"	9'-5"	5'-10"	4'-0"	4'-0"	271.00	291.71	290.67	13'-9"	17'-8"	22'-9"	22'-9"	NONE	6'-11"	4@9"	5@12"		

\*hooked at both ends  
\*\* Cut alternate bars @ 33'-0" above top of footing (Pier 1 only)  
E.F. denotes each face  
F.L. denotes full length

Notes:  
For footing size see Pile Plan Sh. 3  
For details of footings of Pier 1 & 2, see Sh. B of  
Structure 3.

ELEVATION  
3/4\"/>

THE INFORMATION, INCLUDING ESTIMATED QUANTITIES  
OF WORK, SHOWN ON THESE SHEETS IS BASED ON LIMITED  
INVESTIGATIONS BY THE STATE AND IS IN NO WAY WARRANTED  
TO INDICATE THE TRUE CONDITIONS OR ACTUAL QUANTITIES  
OR DISTRIBUTION OF QUANTITIES OF WORK WHICH WILL  
BE REQUIRED.

REVISIONS		
NO.	DATE	DESCRIPTION

CONNECTICUT STATE HIGHWAY DEPARTMENT TOWN OF WATERBURY STRUCTURE NO. 10 RAMP 10 OVER RELOCATED MEADOW ST. & RAMP 5 PIER ELEVATIONS	
DESIGNED BY HOWARD, NEEDLES, TAMMEN & BERGENDOFF	PROJECT NO. 151-89
SCALES As noted	MADE BY T. L. L.
CHECKED BY R. S. A.	DATE 12-25-62
APPROVED R. S. A.	DATE 1-29-63
BRIDGE SHEET NO. 4 OF 8	

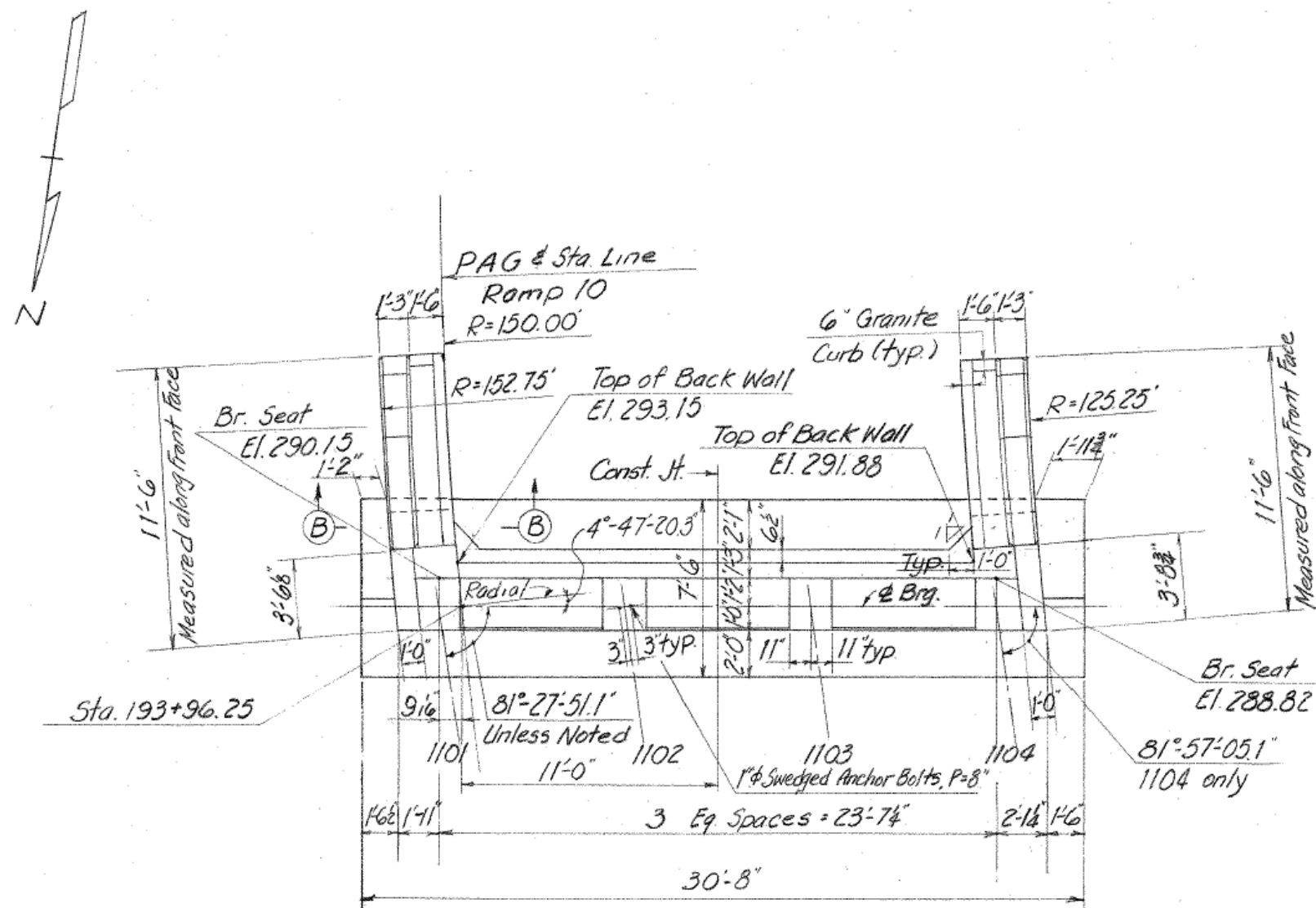
FOR INFORMATION ONLY

REV.	DATE	REVISION DESCRIPTION

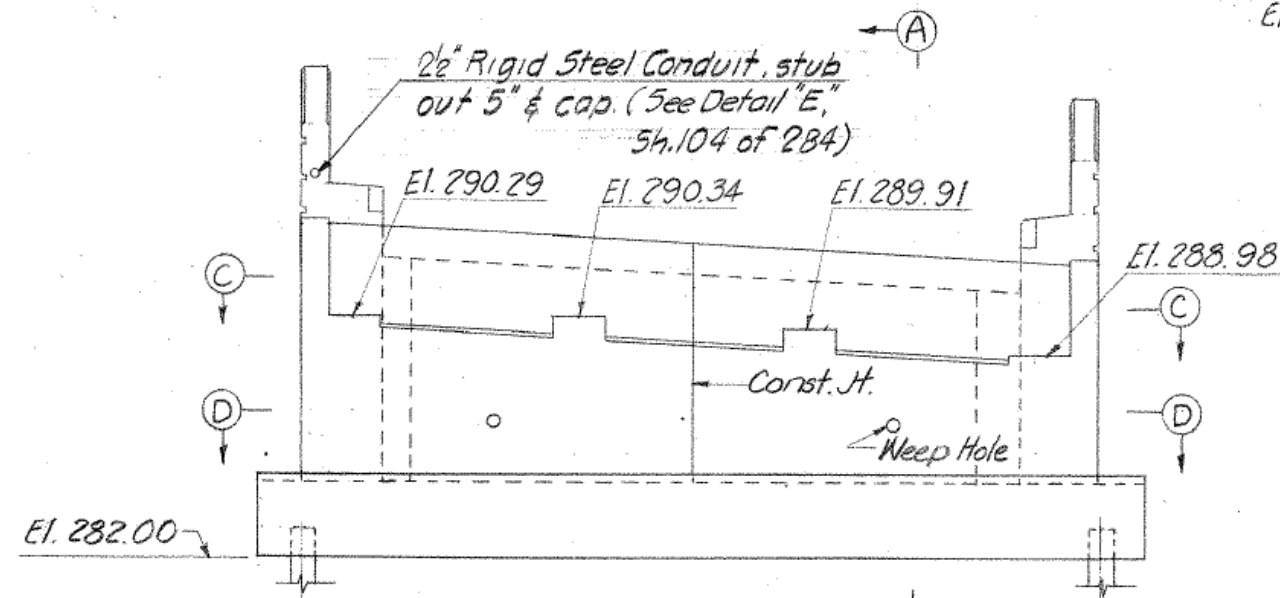
SIGNATURE BLOCK:	PROJECT TITLE: REMOVAL OF I-84 EASTBOUND EXIT 21 OFF-RAMP	TOWN(S): WATERBURY	DRAWING TITLE: FIO - RECORD PLANS	PROJECT NO.: 0151-0340	DRAWING NO.: RP-04
DESIGNER/DRAFTER: TMB	CHECKED BY: MEA	DRAWING NO.: 12.04			

NO REVISIONS SUBMITTED  
FOR THIS SHEET

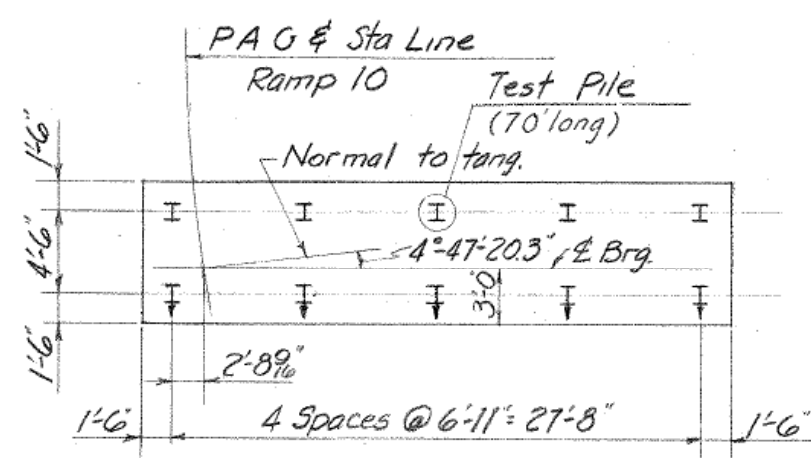
PUB. ROAD	STATE	TOWN	FED. AID	PROJ. NO.	YEAR	ROUTE	SHEET	TOTAL
1	CONN.	WATERBURY	1-18-84	2 (0) 32	1963	1-84	101	284



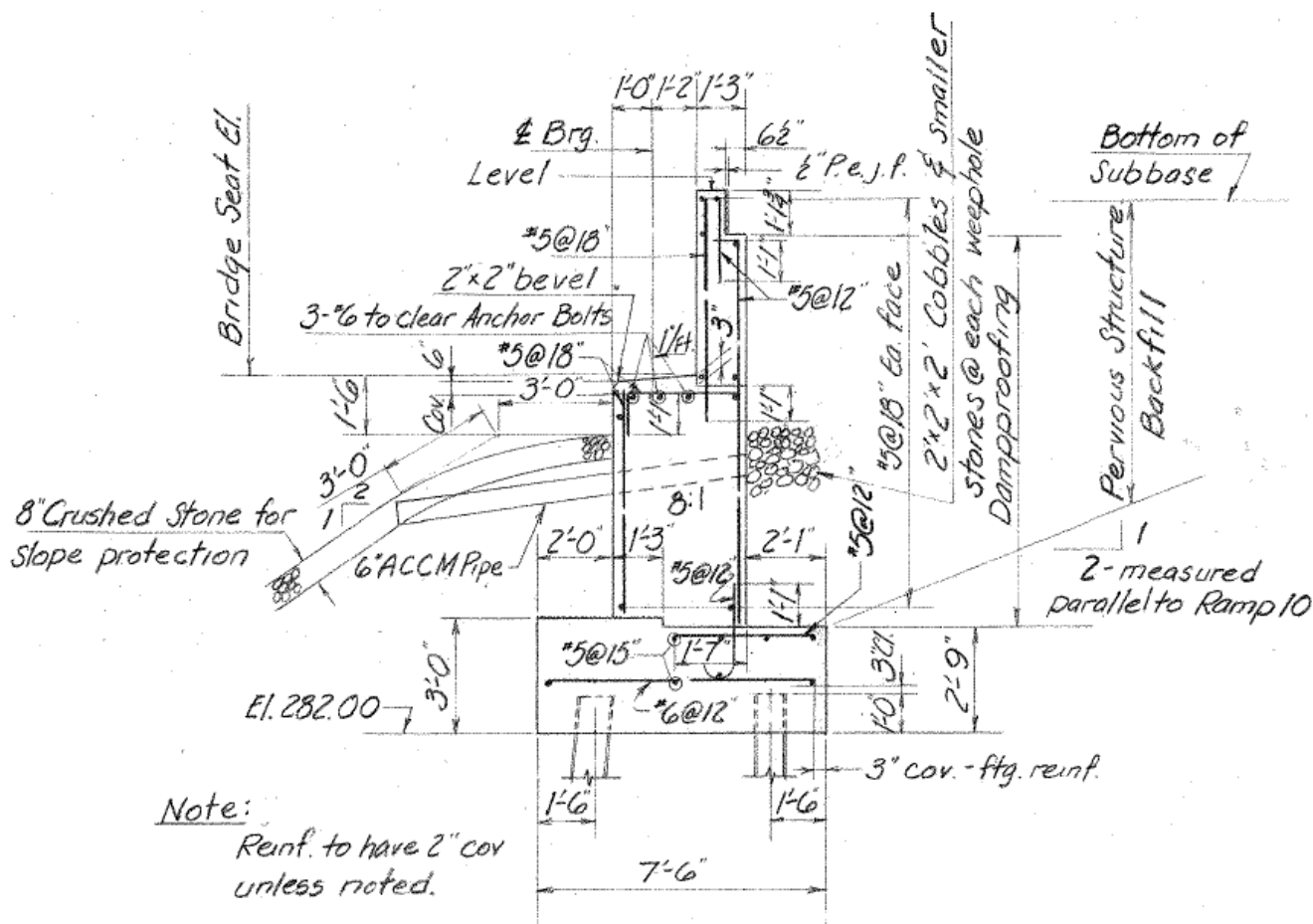
PLAN  
8'-1'-0"



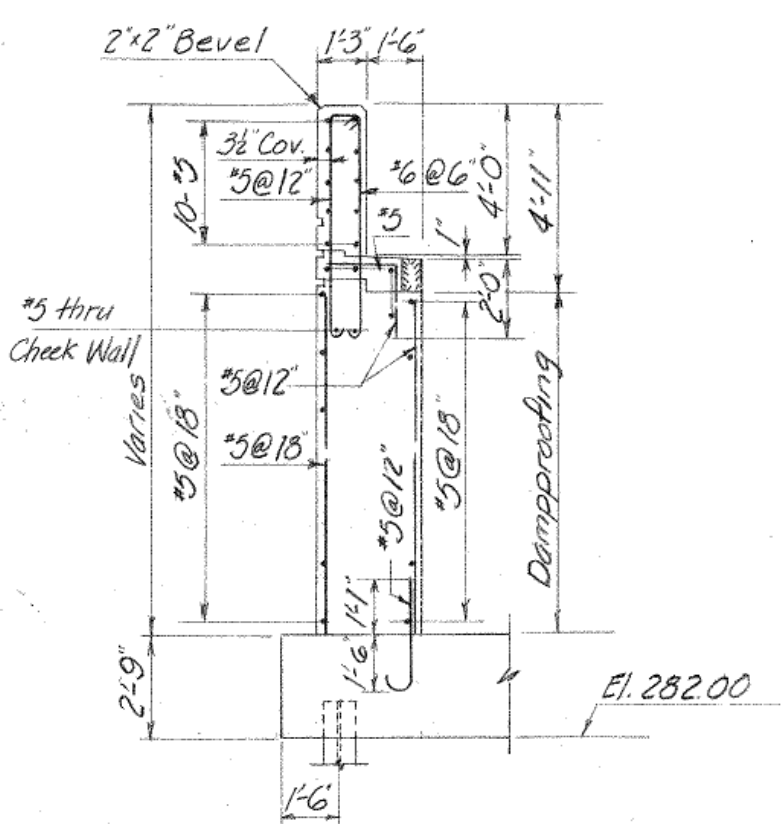
ELEVATION  
8'-1'-0"



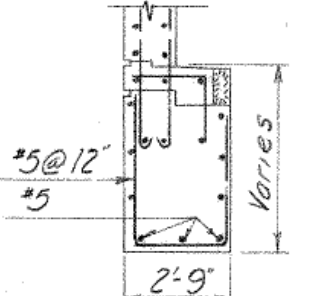
PILE PLAN  
8'-1'-0"



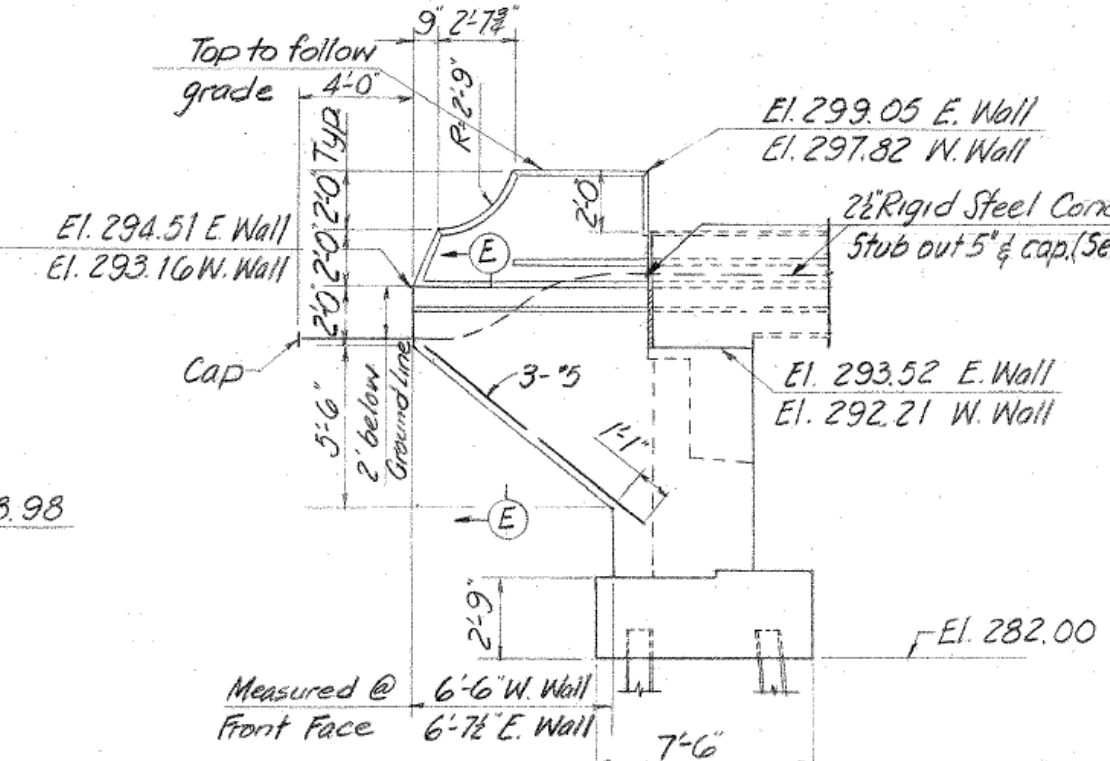
SECTION A-A  
8'-1'-0"



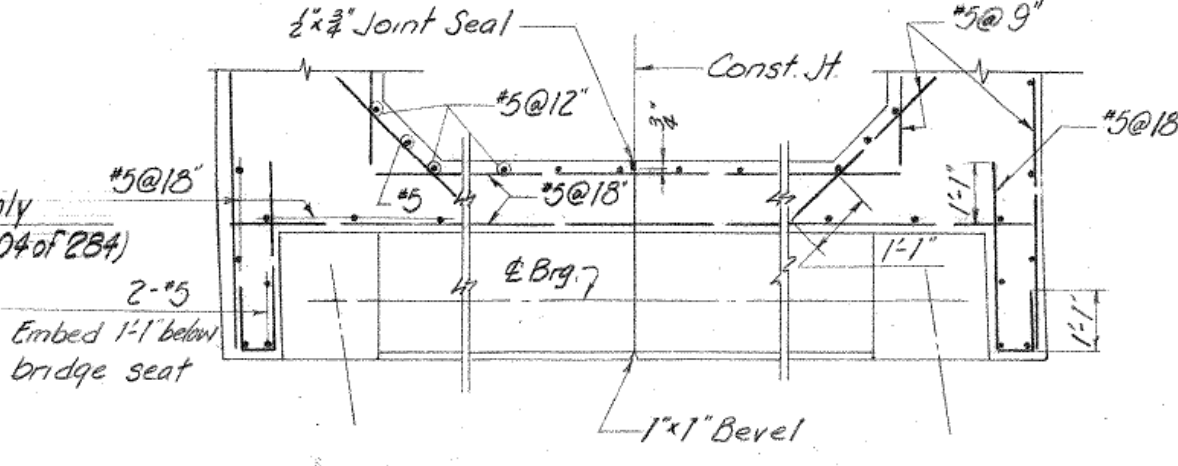
SECTION B-B  
8'-1'-0"



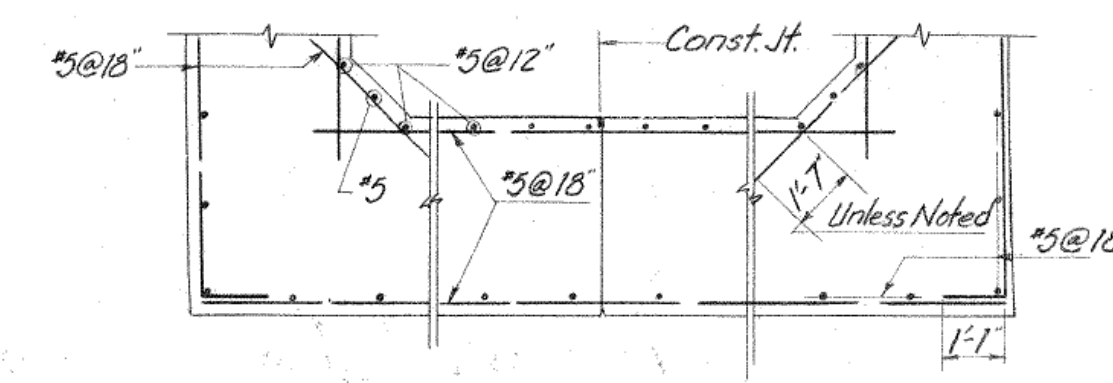
SECTION E-E  
8'-1'-0"



ELEVATION-EAST WINGWALL  
8'-1'-0"  
(West Wingwall opposite hand)



SECTION C-C  
8'-1'-0"



SECTION D-D  
8'-1'-0"

Notes:  
For rustication & granite curb detail see Std. Details, Sh. 5-1  
Reinf. shall pass through construction jt.  
For Anchor Bolt Details, see Std. Details, Sh. 5-1  
Pad reinforcement is required for stringers 1102 & 1103. For details, see Std. Details, Sh. 5-1  
For electrical details see Sh. 6

Pile Notes:  
All piles shall be 10BP42 steel H Piles  
Pile spacing is measured at bottom of footing  
For pile detail see Sh. 5-1  
† denotes batter 3:12 in the direction of arrow.  
Group 1 loading 38.6 T  
Estimated pile length 60'  
All piles shall be driven to bedrock

THE INFORMATION, INCLUDING ESTIMATED QUANTITIES OF WORK, SHOWN ON THESE SHEETS IS BASED ON LIMITED INVESTIGATIONS BY THE STATE AND IS IN NO WAY WARRANTED TO INDICATE THE TRUE CONDITIONS OR ACTUAL QUANTITIES OR DISTRIBUTION OF QUANTITIES OF WORK WHICH WILL BE REQUIRED.

REVISIONS		
NO.	DATE	DESCRIPTION

CONNECTICUT STATE HIGHWAY DEPARTMENT TOWN OF WATERBURY STRUCTURE NO. 10 RAMP 10 OVER RELOCATED MEADOW ST. & RAMP 5 ABUTMENT	
DESIGNED BY HOWARD, NEEDLES, TAMMEN & BERGENDOFF	PROJECT NO. 151-89
SCALES As Noted	DATE 1-17-62
MADE BY T.L.L.	DATE 1-17-62
CHECKED BY R.S.A.	DATE 1-17-62
APPROVED H.C. Bannister	DATE 1-29-63
BRIDGE SHEET NO. 5 OF 8	

FOR INFORMATION ONLY

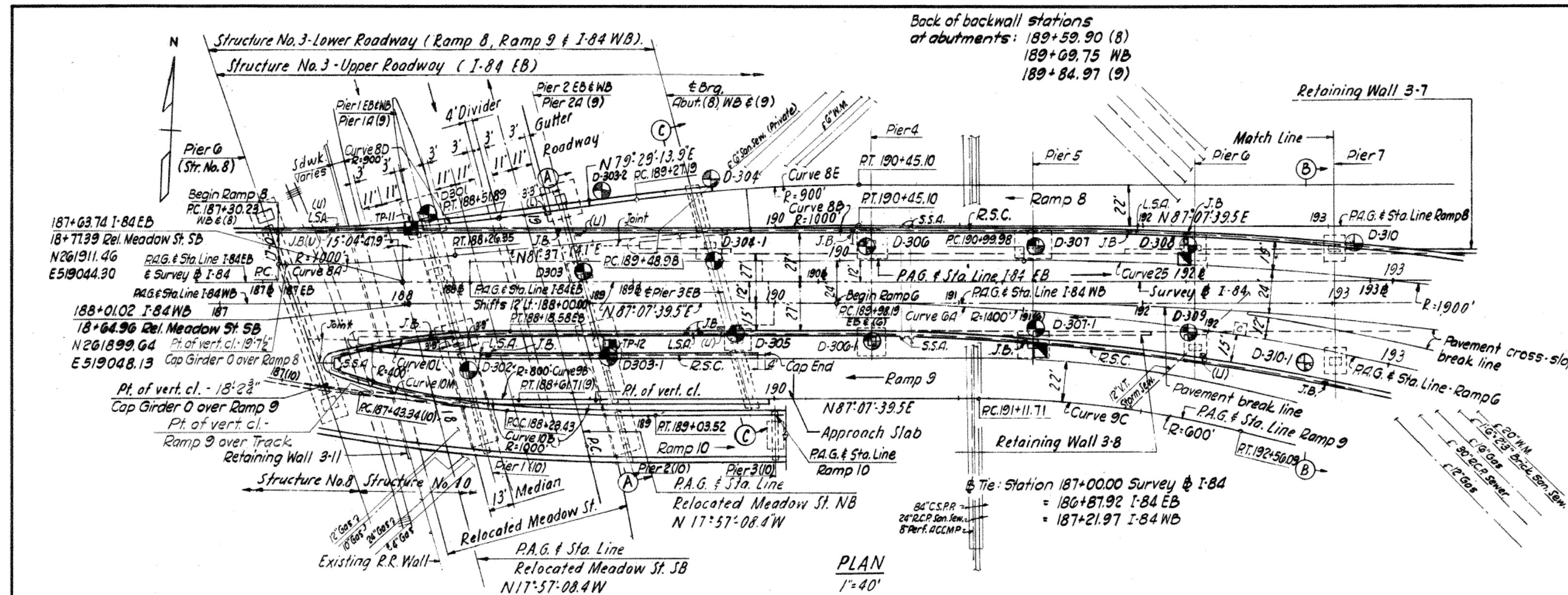
REV.	DATE	REVISION DESCRIPTION

SIGNATURE BLOCK:	DESIGNER/DRAFTER: TMB CHECKED BY: MEA	PROJECT TITLE: REMOVAL OF I-84 EASTBOUND EXIT 21 OFF-RAMP	TOWN(S): WATERBURY	DRAWING TITLE: FIO - RECORD PLANS	PROJECT NO.: 0151-0340	DRAWING NO.: RP-05 SHEET NO.: 12.05
------------------	--	--	-----------------------	--------------------------------------	---------------------------	--



PROJ. NO.	STATE	TOWN	FED. AID PROJ. NO.	PROJ. NO.	YEAR	ROUTE NO.	SHEET NO.	TOTAL SHEETS
151-91	CONN.	WATERBURY	2102131	151-91	1964	1-84	9	242

NO REVISIONS SUBMITTED FOR THIS SHEET

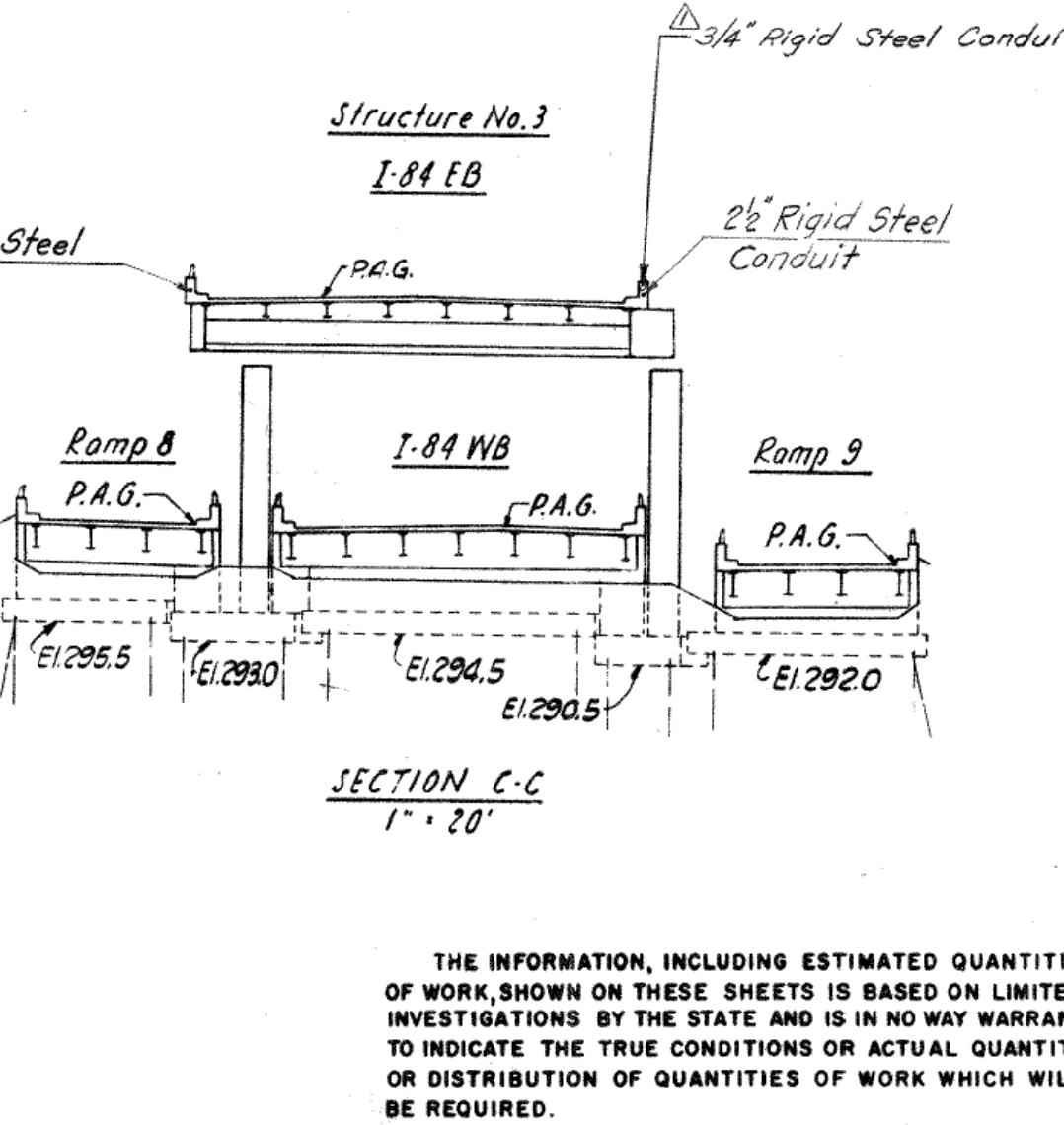
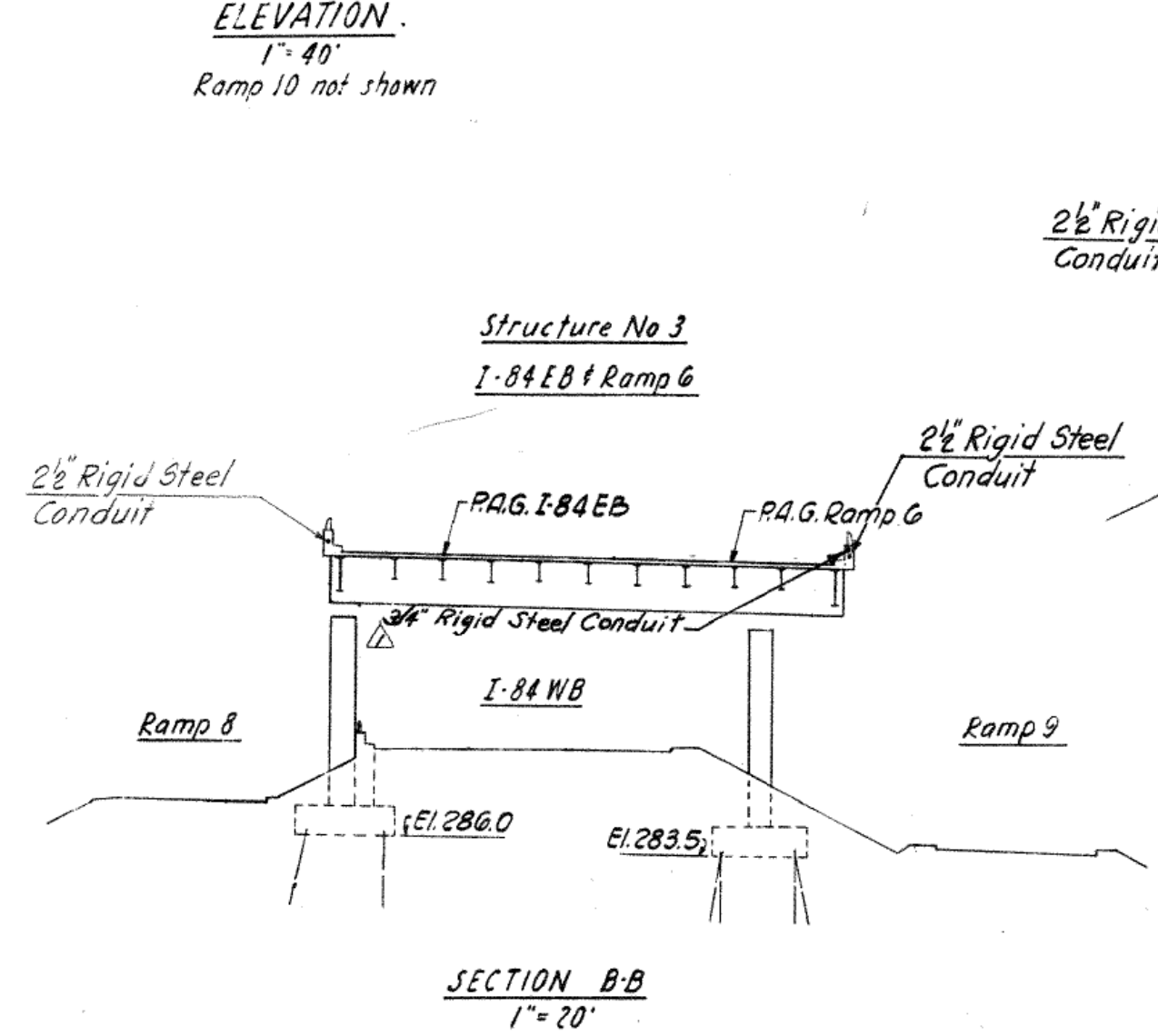
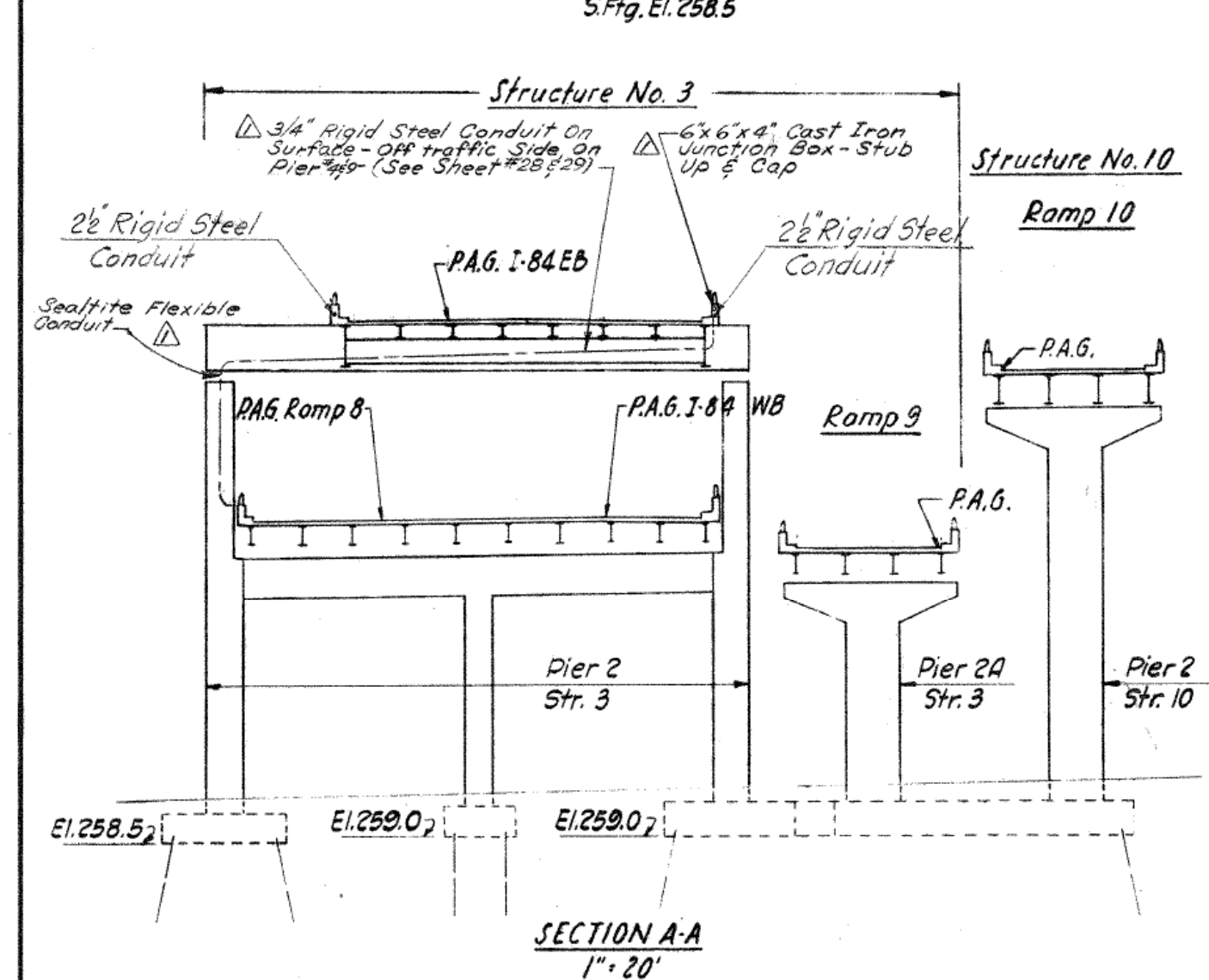
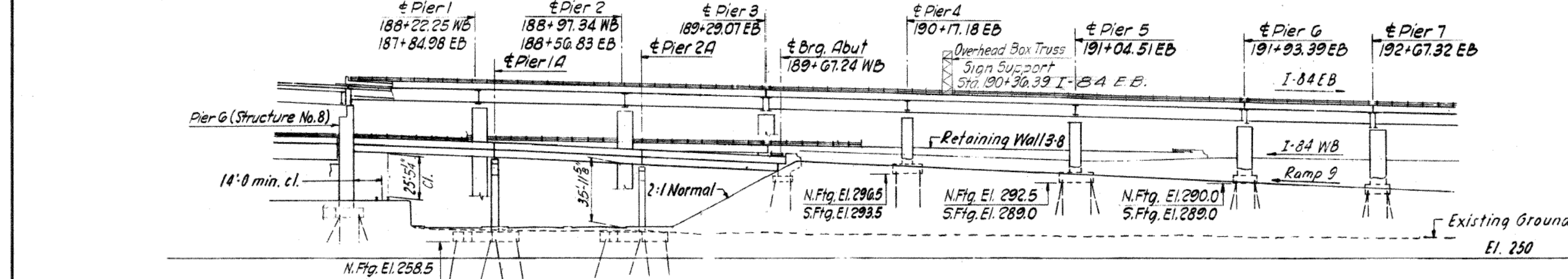


CURVE	Δ	R	L	T
25	23°-52'-20.5"	1900.00'	791.64'	401.05'
6A	27°-56'-06.6"	1400.00'	682.59'	348.22'
8A	5°-30'-25.4"	1000.00'	96.12'	48.10'
8B	5°-30'-25.4"	1000.00'	96.12'	48.10'
8D	7°-38'-25.6"	900.00'	120.02'	60.10'
8E	7°-38'-25.6"	900.00'	120.02'	60.10'
9B	10°-08'-30.5"	800.00'	141.61'	70.99'
9C	13°-47'-13.9"	600.00'	144.38'	72.54'
10B	9°-10'-40.2"	1000.00'	160.18'	80.26'
10M	14°-38'-45.2"	400.00'	102.25'	51.40'
10L	14°-08'-58.6"	400.00'	98.78'	49.64'

- LEGEND**
- Denotes Borings
  - L.S.A. Denotes Light Standard Anchorage
  - R.S.C. Denotes 2" Rigid Steel Conduit
  - J.B. Denotes Cast Iron Junction Box (18" x 18" x 10")
  - SS Denotes Scupper
  - S.S.A. Denotes Sign Standard Anchorage
  - (U) Denotes Upper Level
  - (L) Denotes Lower Level
  - (8) Denotes Ramp 8
  - (9) Denotes Ramp 9
  - (10) Denotes Ramp 10
  - (9) Denotes Ramp 9
  - Denotes Test Pit (Data already obtained)
  - Denotes Test Pit (Required)
  - ☒ Denotes Catch Basin (by others)

QUANTITIES (STRUCTURE NO'S 3 & 6)		
ITEM	UNIT	AMOUNT
Structural Steel	cwt.	34,093
Structural Steel - Low Alloy	cwt.	2736
Class "C" Concrete	c.y.	2543
Deformed Steel Bars	lb.	942,400
Shear Connectors	l.f.	10,125
Metal Bridge Rail	l.f.	3920
1" Preformed Expansion Joint Filler For Bridges	sf.	170
1" Preformed Expansion Joint Filler For Bridges	sf.	65
Neoprene Plate For Bridge Expansion Joint	l.f.	976
2" Rigid Steel Conduit in Structure	l.f.	45
2 1/2" Rigid Steel Conduit in Structure	l.f.	2350
Cast Iron Junction Box (18" x 18" x 10")	ea.	18
Bridge Scupper	ea.	6
4" Cast Iron Pipe For Bridge Drainage	l.f.	110
6" Cast Iron Pipe For Bridge Drainage	l.f.	280
8" Cast Iron Pipe For Bridge Drainage	l.f.	90
10" Cast Iron Pipe For Bridge Drainage	l.f.	5
12" Cast Iron Pipe For Bridge Drainage	l.f.	40
6" x 9" Granite Stone Curbing For Bridges	l.f.	3938
6" x 9" Curved Granite Stone Curbing For Bridges	l.f.	48
Box Truss Overhead Sign Support - Erected	ea.	2
1 1/4" Rigid Steel Conduit in Structure	l.f.	150
Type "A" Foundation	ea.	1

Note: The substructure will be done under a separate contract.



INSPECTION OF FIELD WELDS		
METHOD	UNIT	QUANTITY
Radiographic	in.	-
Magnetic Particle	l.f.	-

REVISIONS		
NO.	DATE	DESCRIPTION
3-44	1-18-63	Add Cast Iron Junction Box & 2 1/2" Rigid Steel Conduit

CONNECTICUT  
STATE HIGHWAY DEPARTMENT  
TOWN OF WATERBURY  
STRUCTURE NO. 3  
INTERSTATE RTE. 84 EB & WB  
BI-LEVEL EAST OF THE  
N.Y. N.H. & H.R.R. YARDS  
GENERAL PLAN

DESIGNED BY HOWARD, NEEDLES, TAMMEN & BERGENDOFF  
SCALES As Noted  
MADE BY C.C.T. & J.G. DATE 1-18-63  
CHECKED BY T.L.T. DATE 1-18-63  
APPROVED H.C. Gentry DATE 1-13-64

PROJECT NO. 151-91  
BRIDGE SHEET NO. 2 OF 31

REV.	DATE	REVISION DESCRIPTION

SIGNATURE BLOCK:

DESIGNER/DRAFTER: TMB CHECKED BY: MEA

CTDOT CONNECTICUT DEPARTMENT OF TRANSPORTATION

PROJECT TITLE: REMOVAL OF I-84 EASTBOUND EXIT 21 OFF-RAMP

TOWN(S): WATERBURY

DRAWING TITLE: FIO - RECORD PLANS

PROJECT NO.: 0151-0340

DRAWING NO.: RP-06

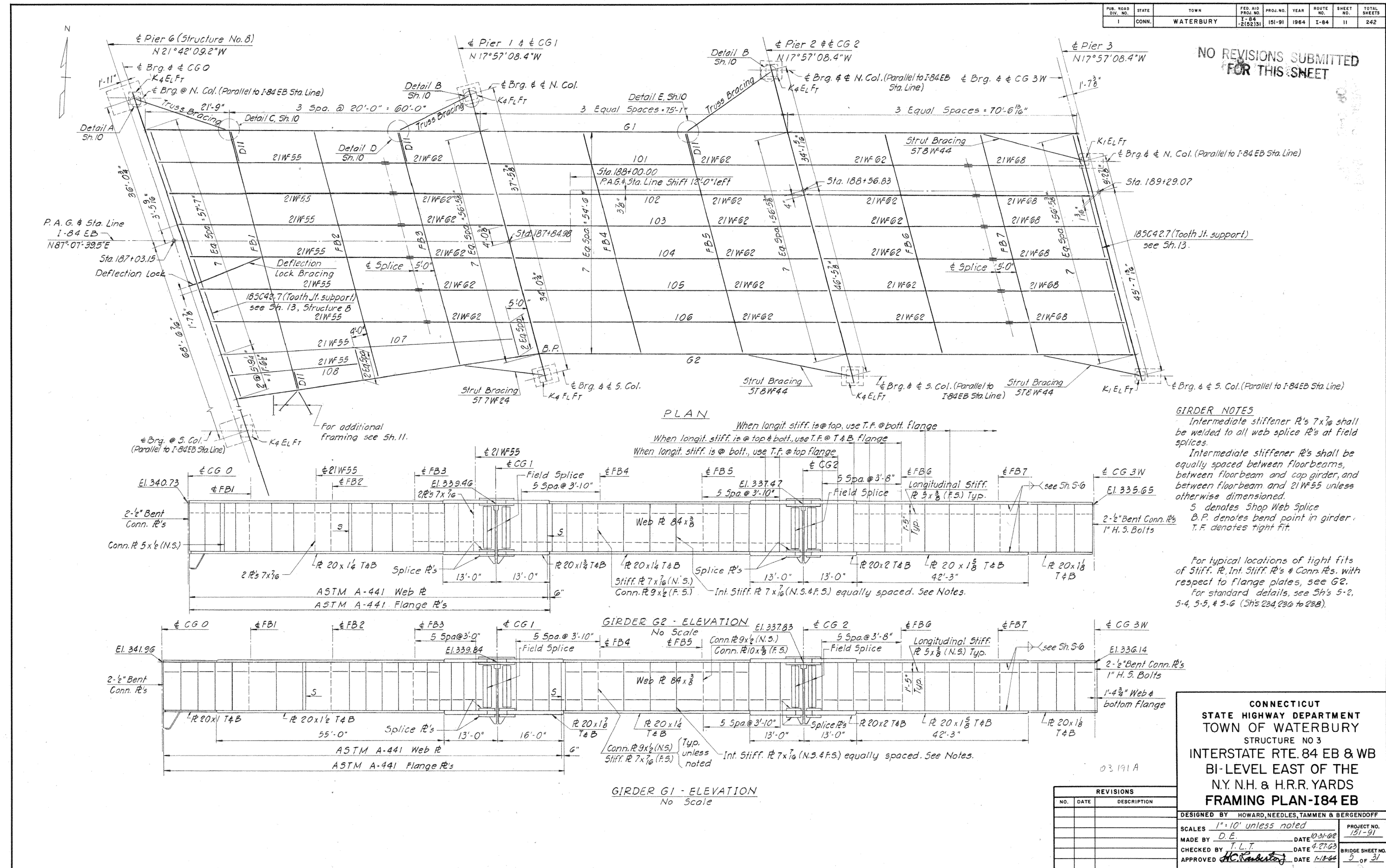
SHEET NO.: 12.06

LASTED SAVED BY: tblock FILE NAME: G:\J08522\14\2201557\ASSIGNMENTS\01\_0151-0340-Waterbury\Drawings\Contract\_Plans\INX-12 - For Information Only\SB\_CP\_0151\_0340\_RP-06.dgn  
PLOTTED DATE: 4/2/2025



PUB. ROAD DIV. NO.	STATE	TOWN	FED. AID PROJ. NO.	PROJ. NO.	YEAR	ROUTE NO.	SHEET NO.	TOTAL SHEETS
I	CONN.	WATERBURY	I-84 2(52)31	151-91	1964	I-84	11	242

NO REVISIONS SUBMITTED FOR THIS SHEET



**CONNECTICUT STATE HIGHWAY DEPARTMENT**  
**TOWN OF WATERBURY**  
 STRUCTURE NO 3  
**INTERSTATE RTE. 84 EB & WB**  
**BI-LEVEL EAST OF THE**  
**N.Y. N.H. & H.R.R. YARDS**  
**FRAMING PLAN-184 EB**

DESIGNED BY HOWARD, NEEDLES, TAMMEN & BERGENDOFF  
 SCALES 1"=10' unless noted  
 MADE BY D.E. DATE 10-31-62  
 CHECKED BY T.L.T. DATE 4-27-63  
 APPROVED H.C. Renshaw DATE 1-13-64

PROJECT NO. 151-91  
 BRIDGE SHEET NO. 5 OF 31

REV.	DATE	REVISION DESCRIPTION





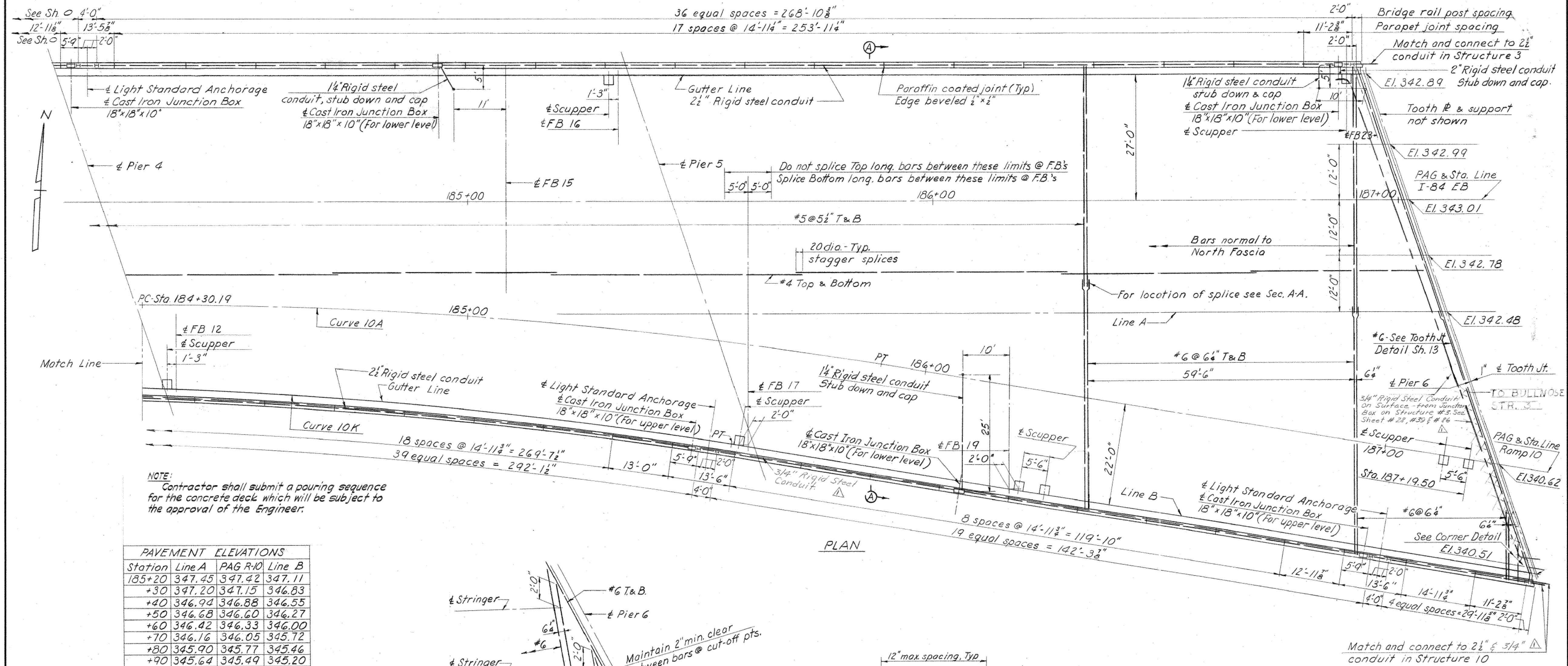






PUB. ROAD DIV. NO.	STATE	TOWN	FED. AID PROJ. NO.	PROJ. NO.	YEAR	ROUTE NO.	SHEET NO.	TOTAL SHEETS
1	CONN.	WATERBURY	19-84-2 (0231)	101-91	1964	1-84	52	242

Revisions in Green to Show Bridge As Constructed



NOTE:  
For notes see Sh. 14.  
For Section A-A see Sh. 14.

CONNECTICUT  
STATE HIGHWAY DEPARTMENT  
TOWN OF WATERBURY  
STRUCTURE NO. 8  
INTERSTATE RTE 84 EB & WB  
BI-LEVEL OVER  
N.Y. N.H. & H.R.R. YARDS  
DECK PLAN-UPPER LEVEL

DESIGNED BY HOWARD, NEEDLES, TAMMEN & BERGENDOFF  
SCALES 1"=10' unless noted  
MADE BY ABG DATE 3-12-63  
CHECKED BY MEL DATE 2-8-64  
APPROVED DATE 1-13-64

PROJECT NO. 151-91  
BRIDGE SHEET NO. 13 OF 25

REV.	DATE	REVISION DESCRIPTION

SIGNATURE BLOCK:		CONNECTICUT DEPARTMENT OF TRANSPORTATION	PROJECT TITLE:	TOWN(S):	DRAWING TITLE:	PROJECT NO.:	DRAWING NO.:
DESIGNER/DRAFTER: TMB	CHECKED BY: MEA		REMOVAL OF I-84 EASTBOUND EXIT 21 OFF-RAMP	WATERBURY	FIO - RECORD PLANS	0151-0340	RP-10
LASTED SAVED BY: block FILE NAME: G:\JOB522\14\2201557\ASSIGNMENTS\01_0151-0340-Waterbury\Drawn\Bridge\Contract_Plans\INX-12 - For Information Only\SB_CP_0151_0340_RP-10.dgn PLOTTED DATE: 4/2/2025		SHEET NO.: 12.10					

FOR INFORMATION ONLY