

NOTICE TO PROSPECTIVE BIDDERS
RI CONTRACT NO. 2025-CB-031
TCB25005700
Corridor - Woonsocket
ADDENDUM NO. 2
September 30, 2025

Prospective bidders and all concerned are hereby notified of the following changes in the Plans, Specifications, Proposal, and Distribution of Quantities for this contract. These changes shall be incorporated in the Plans, Specifications, Proposal, and Distribution of Quantities, and shall become an integral part of the Contract Documents.

A. CS Pages

1. Page 8

Remove Page CS-8 in its entirety and replace it with revised Page CS-8 (R-1) attached to this Addendum No. 2. Section 10, paragraph d, has been added.

B. Plans

1. Volume 2 – Sheet No. 43 (R-1)

Remove Volume 2 - Sheet No. 43 (R-1) in its entirety and replace it with revised Volume 2 - Sheet No. 43 (R-2) attached to this Addendum No. 2.

2. Volume 3 – Sheet No. 21

Remove Volume 3 - Sheet No. 21 in its entirety and replace it with revised Volume 3 - Sheet No. 21 (R-1) attached to this Addendum No. 2.

3. Volume 3 – Sheet No. 37

Remove Volume 3 - Sheet No. 37 in its entirety and replace it with revised Volume 3 - Sheet No. 37 (R-1) attached to this Addendum No. 2.

C. DOQ

1. Sheet TOC-3 (R-1)

Remove Sheet TOC-3 (R-1) in its entirety and replace it with revised Sheet TOC-3 (R-2) attached to this Addendum No. 2. Revisions have been marked in red.

2. Sheet 86

Remove Sheet 86 in its entirety and replace it with revised Sheet 86 (R-1) attached to this Addendum No. 2. The quantity for Item Code 825.8040 has been revised.

NOTICE TO PROSPECTIVE BIDDERS
RI CONTRACT NO. 2025-CB-031
TCB25005700
Corridor - Woonsocket
ADDENDUM NO. 2
September 30, 2025

D. OSP File

1. Item Specifications and Quantities

Item and quantity changes include the following:

Item 825.8040 – Quantity changed.

E. Other

1. Questions and Answers

All Questions and answers that have been submitted are attached to this Addendum No. 2.

- g. Detours onto non-state roadways are subject to approval of the local jurisdiction. The Contractor shall coordinate any such detours at his own expense. There will be no allowance or time extension as a result of detour(s) not being permitted by local jurisdictions.
- h. Signalized intersections under reconstruction within the project limits shall have timings modified as needed during construction and as directed by the engineer. The cost for the modification to controllers at these locations shall be included in item 937.0100 Furnish, Install, Maintain, and Move Temporary Traffic Protection.
- i. Signalized intersections outside of the project limits but along potential detour routes shall have timings modified as needed and as directed by the engineer to accommodate detoured traffic. The cost for the modification to controllers at these locations shall be included in item T12.0300 Modify Existing Traffic Signal Controller/Cabinet and shall be paid per location, regardless of the number of times timings are modified. The contractor shall modify timings as needed and restore original timings upon completion of detour removal.

10. SPECIAL NOTICE TO THE CONTRACTOR

- a. The Contractor is responsible for damage to existing structures, equipment, or signs in the roadway and the side of road area.
- b. All grass existing in the gutter line shall be removed prior to any paving operations.
- c. There shall be no parking of vehicles or storage of construction equipment under the drip line of any tree.
- d. The Contractor shall be responsible for locating and securing laydown and/or stockpile area(s) at no cost to the RIDOT.

11. SPECIAL REQUIREMENTS FOR PAVEMENT MARKINGS

All pavement markings are to be in accordance with the requirements of the “Manual on Uniform Traffic Control Devices, 2023 Edition,” including all revisions.

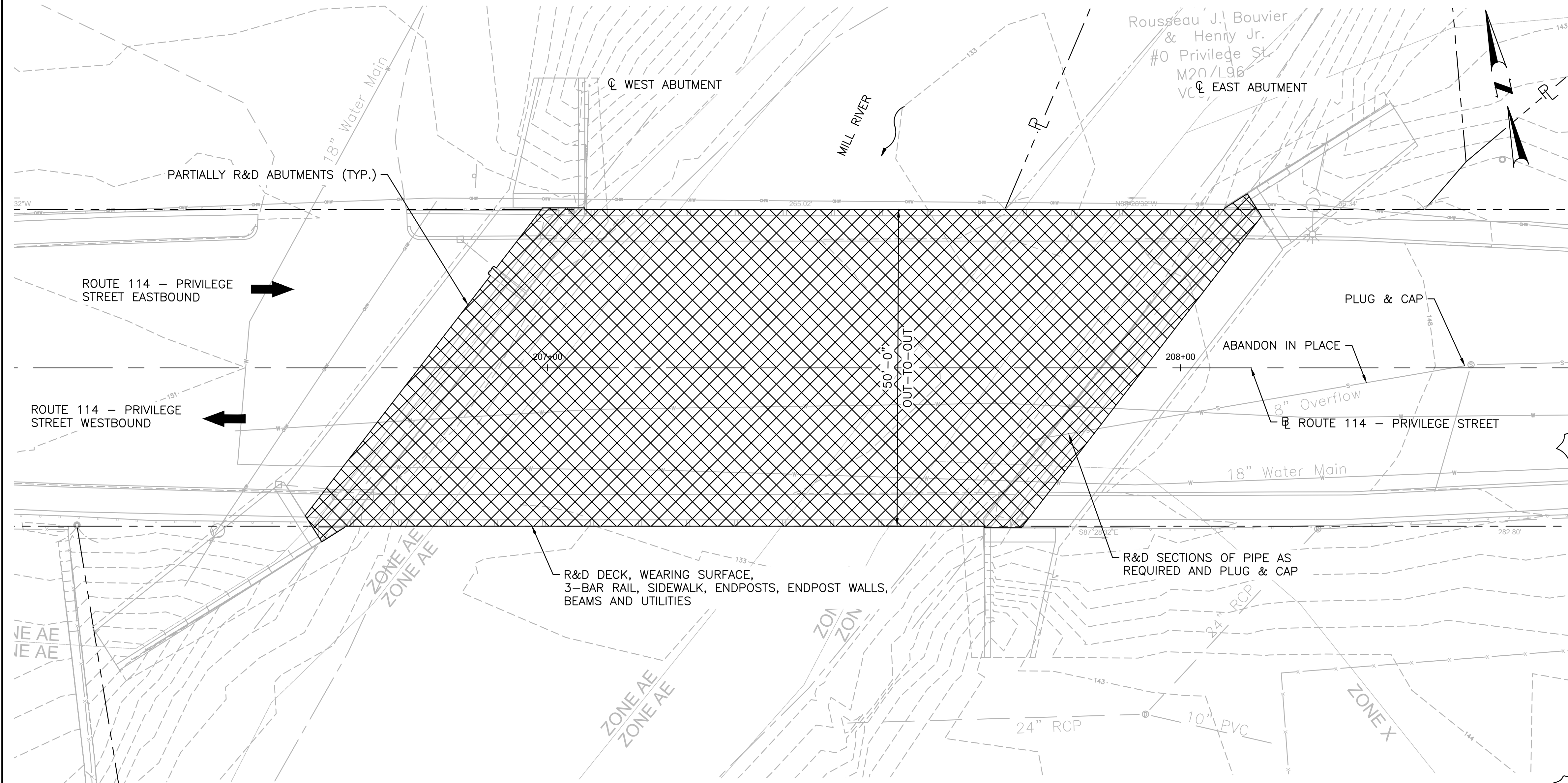
It is the Contractor’s responsibility to reflect the exact location, unless otherwise proposed on the plans, of all existing pavement markings onto the newly finished surfaces. The Contractor shall make the necessary arrangements to enable him to reestablish these locations before any micro-milling or resurfacing commences.

All conflicting pavement markings shall be removed in accordance with the “Manual on Uniform Traffic Control Devices, 2023 Edition,” including all revisions.

The Contractor shall place waterborne pavement markings at the end of each day’s paving operation on micromilled surfaces, on the intermediate and final HMA courses, and/or as directed by the Engineer. The traveled way shall be clearly marked at all times.

On the final riding surface course of new pavement, the Contractor shall place waterborne

RI CONTRACT NO.	FISCAL YEAR	SHEET NO.	TOTAL SHEETS
2025-CB-031	2025	43	50



NOTES:

1. PLANS AND DETAILS ON THE DEMOLITION PLANS ARE ILLUSTRATIVE TO DEPICT THE LIMITS OF REMOVAL. THE CONTRACTOR IS REFERRED TO THE ORIGINAL CONSTRUCTION PLANS FOR THE COMPOSITION AND THE DETAILS TO THE SUPERSTRUCTURE AND SUBSTRUCTURE ELEMENTS.
2. UNLESS NOTED OTHERWISE, ALL AREAS DISTURBED DURING DEMOLITION AND REMOVAL WORK SHALL BE BACKFILLED WITH COMMON BORROW AND RESTORED TO THEIR ORIGINAL CONDITION.
3. DISPOSAL OF DEMOLITION MATERIAL TO BE IN ACCORDANCE WITH THE CONTRACT DOCUMENTS AND ALL OTHER APPLICABLE REGULATION.
4. THE FILL MATERIAL USED TO BACKFILL VOIDS RESULTING FROM BELOW GRADE DEMOLITION SHALL BE COMMON BORROW.
5. REQUIRED TEMPORARY FENCE AND/OR GATES SHALL BE CONSIDERED INCIDENTAL TO THE DEMOLITION ITEMS; NO ADDITIONAL PAYMENT WILL BE MADE.
6. RESETING AND/OR RELOCATING OF TEMPORARY FENCE AND/OR GATES SHALL BE INCLUDED UNDER ITEM 937.0100.

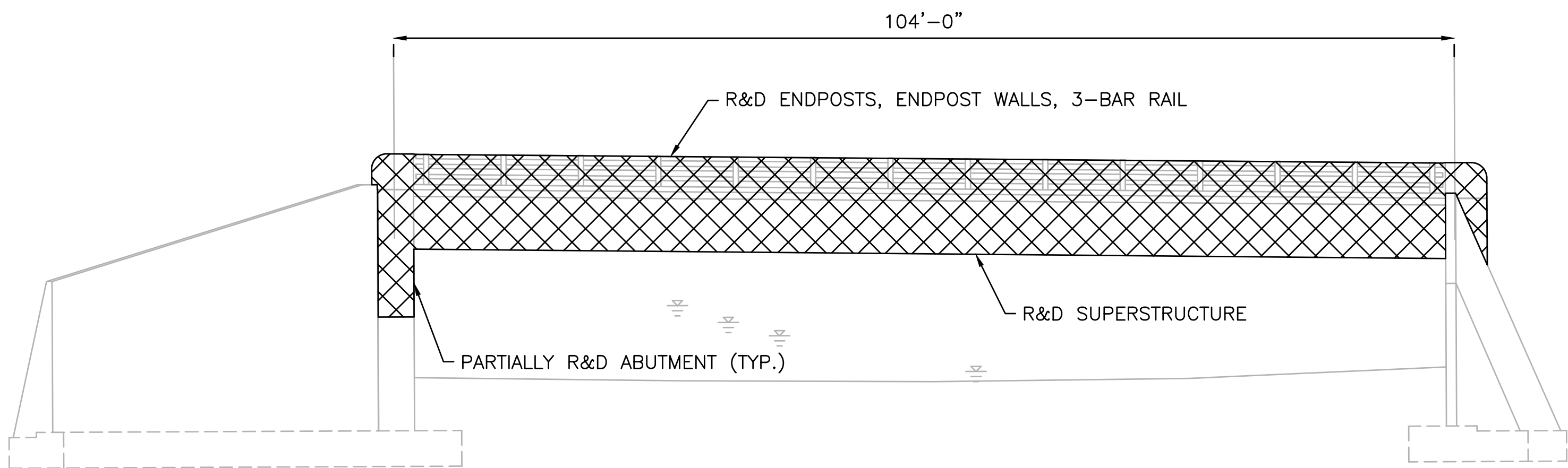
LEGEND:

 REMOVE AND DISPOSE

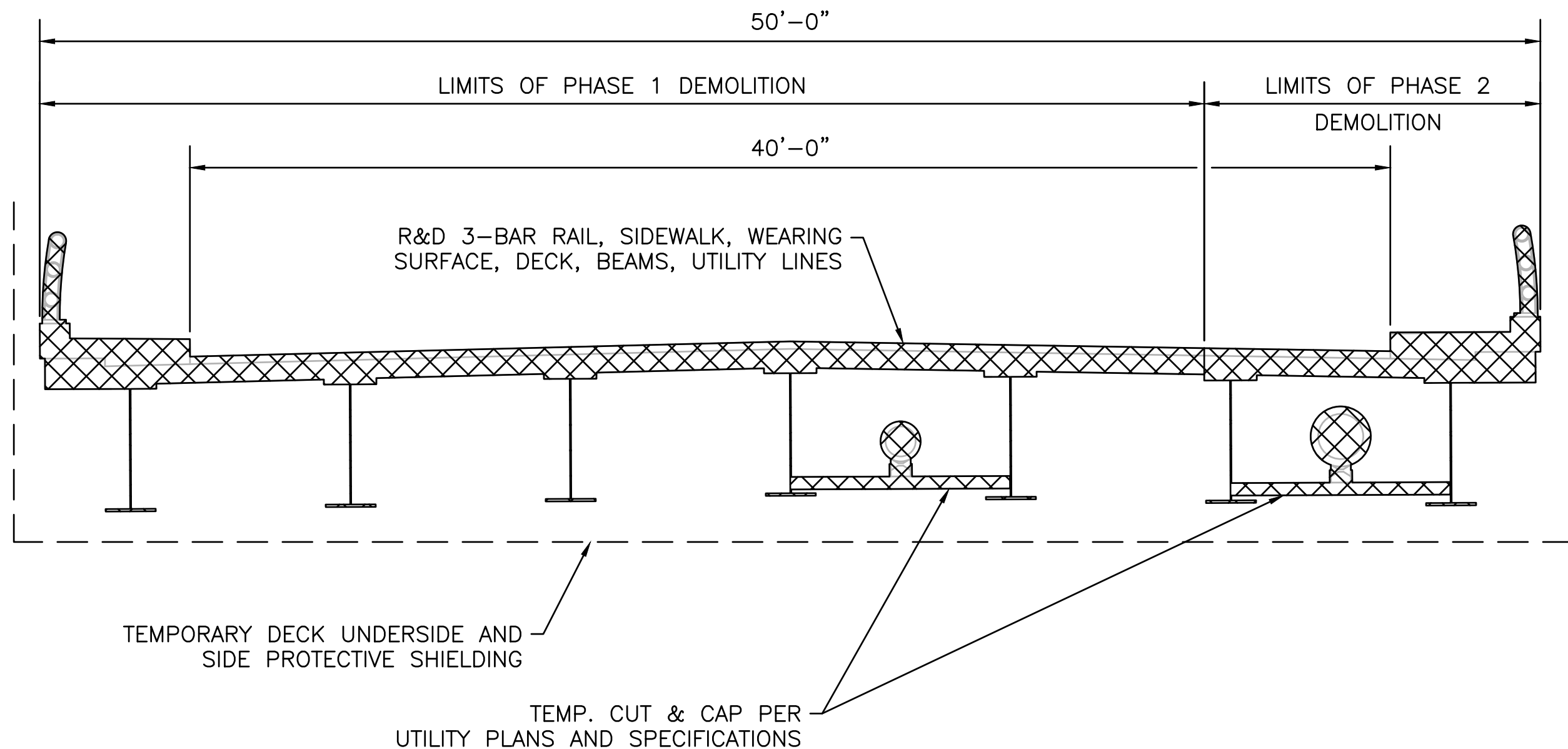
TEMPORARY SHIELDING NOTES:

1. TEMPORARY SHIELDING SHALL BE IN ACCORDANCE WITH SECTION 803 OF THE RI STANDARD SPECIFICATIONS.
2. PAYMENT FOR REQUIRED TEMPORARY SHIELDING SHALL BE CONSIDERED INCIDENTAL TO THE ITEM OF WORK FOR WHICH IT IS REQUIRED. NO ADDITIONAL PAYMENT WILL BE MADE.



DEMOLITION PLAN
SCALE: 1'=10'



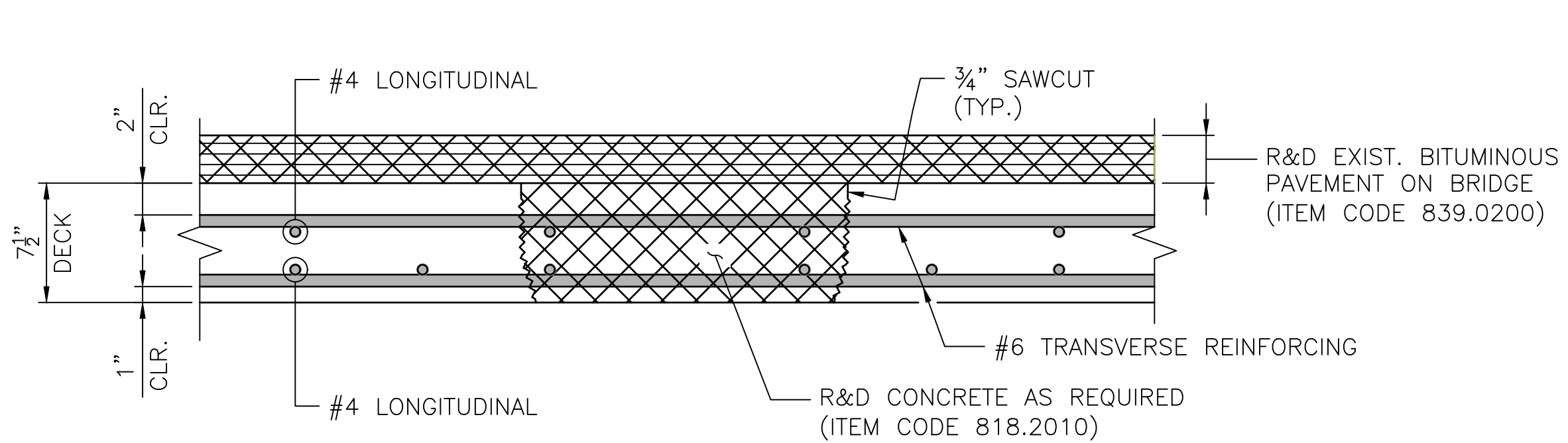
DEMOLITION ELEVATION - LOOKING NORTH
SCALE: 1'=10'



DEMOLITION TRANSVERSE SECTION - LOOKING EAST
SCALE: 1/4"=1'-0"

		RHODE ISLAND DEPARTMENT OF TRANSPORTATION	DESIGNED BY: CHECKED BY: DATE: SHEET: OF:	SCALE:	WOONSOCKET CORRIDOR REPLACEMENT OF PRIVILEGE STREET BRIDGE NO. 096301 VOLUME: 2 DEMOLITION DETAILS - 1

RI CONTRACT NO.	FISCAL YEAR	SHEET NO.	TOTAL SHEETS
2025-CB-031	2025	28	52



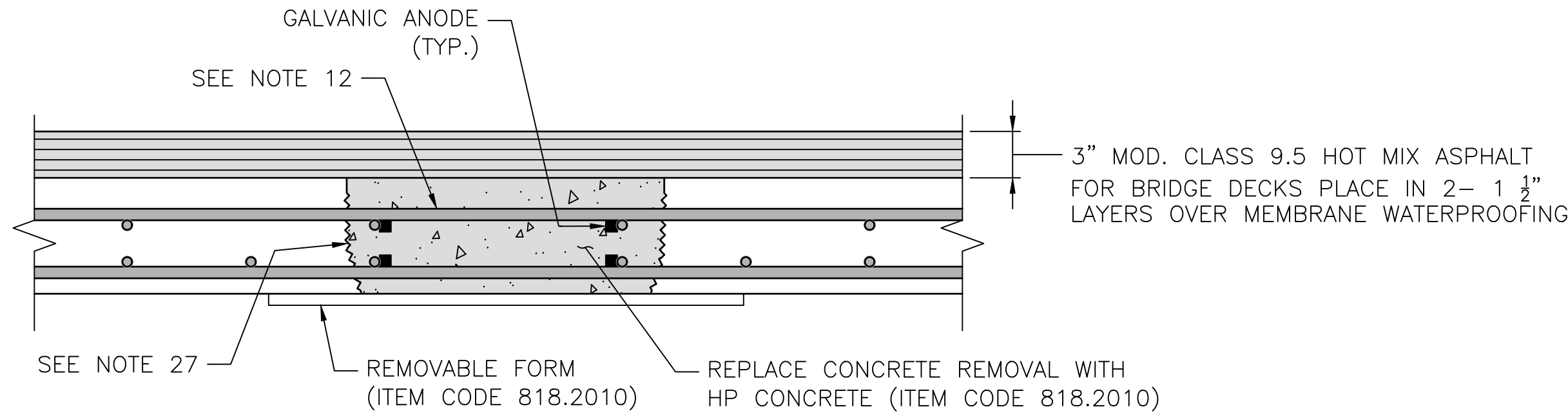
EXISTING

FULL DEPTH CONCRETE DECK REPAIR
(ITEM CODE 818.2010)

(NOT TO SCALE)

LEGEND

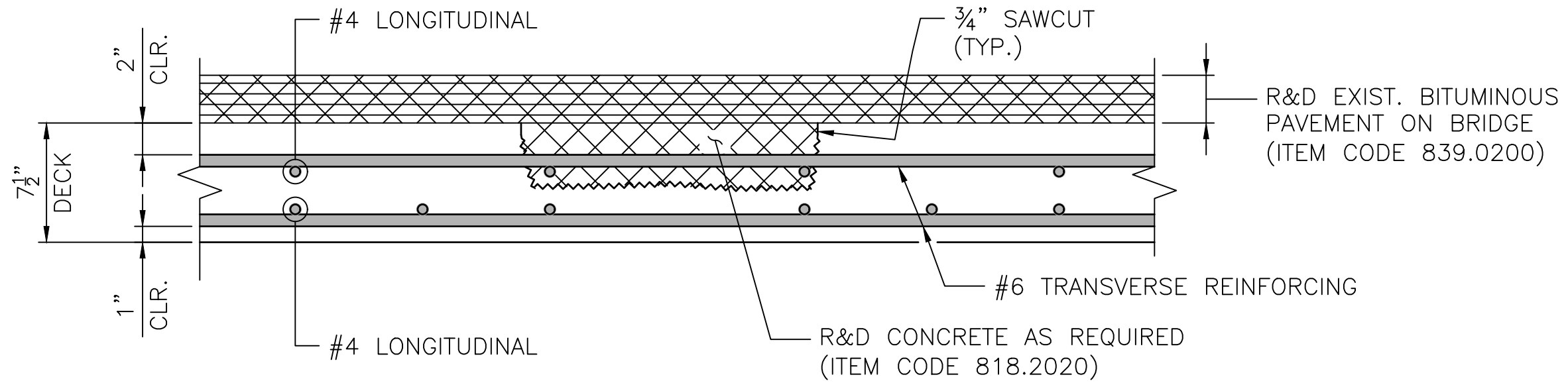
- DENOTES AREAS TO BE REMOVED AND DISPOSED
- DENOTES AREAS OF NEW CONCRETE



PROPOSED

GALVANIC ANODE SPACING NOTE:

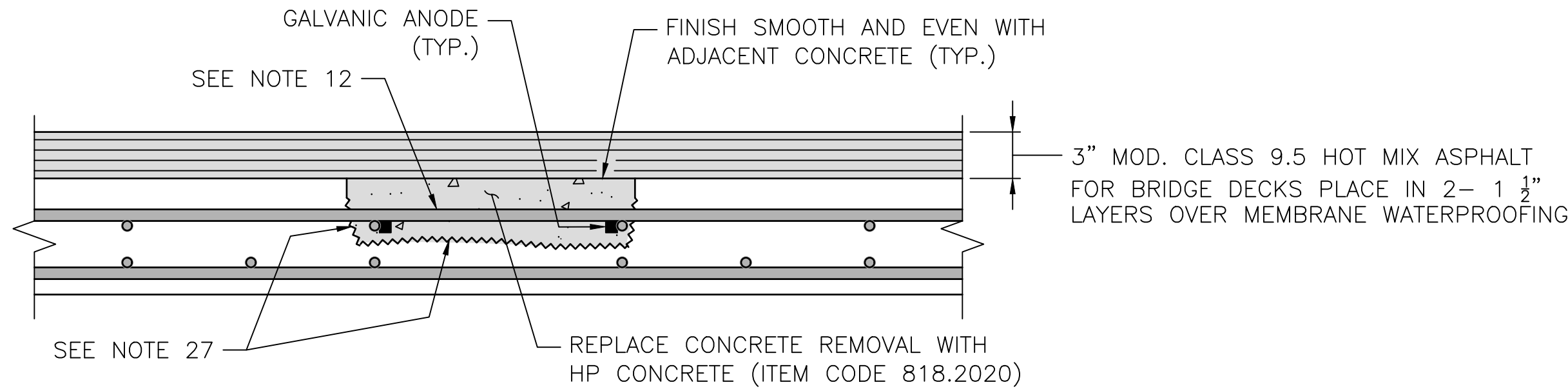
GALVANIC ANODES SHALL BE SPACED EVENLY AROUND THE PERIMETER OF THE REPAIR AREA AT A MAXIMUM SPACING OF 18" O.C.



EXISTING

PARTIAL DEPTH CONCRETE DECK REPAIR
(ITEM CODE 818.2020)

(NOT TO SCALE)



PROPOSED

BRIDGE DECK REPAIR NOTES

- THE DECK DETERIORATION AND REPAIR ESTIMATES ARE BASED ON GROUND PENETRATING RADAR (GPR). SEE BRIDGE 095301 CONCRETE DECK AND SIDEWALK REPAIRS – 1 SHEET FOR AREAS OF POTENTIAL DECK CONCRETE DEBONDING/DELAMINATION. THE EXACT LOCATION AND LIMITS OF EXPOSED REINFORCEMENT AND HOLLOW AREAS OF CONCRETE IN THE DECK SHALL BE DETERMINED BY THE CONTRACTOR AND APPROVED BY THE ENGINEER DURING CONSTRUCTION.
- THE CONTRACTOR SHALL NOT PERFORM ANY REPAIR WORK WITHOUT PRIOR APPROVAL FROM THE ENGINEER. THE REMOVAL OF DETERIORATED CONCRETE SHALL PROCEED AS APPROVED BY THE ENGINEER.
- THE EXISTING SLAB SHALL BE SOUNDED FOR HOLLOW AREAS OF CONCRETE TO THE SATISFACTION OF THE ENGINEER. THE CONTRACTOR SHALL PERFORM CHAIN DRAGGING, HAMMER SOUNDING, OR OTHER METHODS OF DETECTION AS APPROVED BY THE ENGINEER. THE CONTRACTOR SHALL PROVIDE SAFE ACCESS TO THE ENGINEER FOR DELINEATION AND INSPECTION OF THE SIDEWALK AND DECK, AND THE REPAIR WORK.
- THE DECK EVALUATION SHALL BE PERFORMED AFTER REMOVAL OF THE PAVEMENT.
- PRIOR TO THE REMOVAL OF ANY DETERIORATED DECK CONCRETE, THE CONTRACTOR SHALL INSTALL TEMPORARY DECK UNDERSIDE PROTECTIVE SHIELDING BENEATH THE DESIGNATED REPAIR LOCATIONS IN ACCORDANCE WITH ITEM CODE 803.0500. HORIZONTAL LIMITS SHALL EXTEND A MINIMUM OF 2'-0" BEYOND THE LIMITS OF THE REPAIR; VERTICAL LIMITS SHALL BE SUFFICIENT TO CONTAIN ANY POSSIBLE DEBRIS. ALL COSTS ASSOCIATED WITH THIS SHIELDING SHALL BE INCLUDED IN THE COST OF THE REPAIR.
- IF REMOVAL OF DETERIORATED CONCRETE EXCEEDS TWO-THIRDS OF THE TOTAL THICKNESS OF THE SLAB, REMOVE THE REMAINDER OF THE CONCRETE TO THE BOTTOM OF THE SLAB AND PERFORM PATCHING.
- IF THE REINFORCING STEEL HAS AT LEAST ONE HALF OF ITS SURFACE AREA EXPOSED AFTER CONCRETE REMOVAL, THE CONCRETE SHALL BE FURTHER REMOVED TO A DEPTH OF 1" BELOW THE STEEL. IN AREAS WHERE REINFORCING STEEL IS ONLY PARTIALLY EXPOSED AFTER REMOVAL OF DETERIORATED CONCRETE, THE REINFORCEMENT SHALL BE COATED WITH EPOXY BONDING COMPOUND BEFORE PLACING PATCHING MATERIAL.
- EQUIPMENT USED TO REMOVE DECK AND SIDEWALK CONCRETE SHALL BE LIMITED TO PORTABLE HANDHELD TOOLS AND SMALL PNEUMATIC EQUIPMENT THAT CAN PROVIDE CONTROLLED REMOVAL OF THE CONCRETE. EQUIPMENT IS TO BE APPROVED BY THE ENGINEER.
- A CHISEL BIT SHALL BE USED FOR THE PNEUMATIC HAMMER; A POINTED BIT SHALL NOT BE ALLOWED.
- ALL DETERIORATED AREAS SHALL BE DELINEATED BY A 3/4" SAWCUT. CARE SHALL BE EXERCISED TO ENSURE EXISTING REINFORCING IS NOT DAMAGED DURING SAWCUT. THE COST OF SAWCUTTING SHALL BE INCLUDED IN THE RELEVANT REPAIR TYPE INDICATED ON THE PLANS.
- AFTER REMOVAL OF DETERIORATED DECK CONCRETE, THE REINFORCING MAY BE FOUND TO BE DETERIORATED PAST THE POINT THAT IT IS UNACCEPTABLE FOR REUSE. THE EXISTING REINFORCING SHALL BE REPLACED WHEN:
 - EXISTING REINFORCING HAS 25% OR MORE OF SECTION LOSS.
 - EXISTING REINFORCING IS SEVERED.
 - AS DIRECTED BY THE ENGINEER.
- ALL EXPOSED REINFORCING STEEL TO REMAIN SHALL BE THOROUGHLY CLEANED IN ACCORDANCE WITH SECTION 818 OF THE RHODE ISLAND STANDARD SPECIFICATIONS FOR ROAD AND BRIDGE CONSTRUCTION.
- GALVANIC ANODES SHALL BE INSTALLED AS INDICATED IN THE DETAILS AND IN ACCORDANCE WITH THE MANUFACTURER'S REQUIREMENTS AND RECOMMENDATIONS. GALVANIC ANODES SHALL BE SPACED 18" MAX. O.C.

- REMOVE CONCRETE AS FAR AS REQUIRED TO EXPOSE SOUND REINFORCING TO LAP THE NEW BARS. THE CONCRETE SHALL BE REMOVED TO A MINIMUM DEPTH OF 1" BELOW THE NEW BARS. REMOVAL IS TO STOP ONCE CONCRETE BEING REMOVED HAS FRACTURE LINES THAT PASS THROUGH AGGREGATE.
- NEW BARS SHALL MATCH EXISTING BAR SIZES AND SPACING FOR BOTH LONGITUDINAL AND TRANSVERSE BARS.
- REINFORCEMENT SHALL BE GALVANIZED AND CONFORM TO ASTM A615, GRADE 60. THE COST OF REPLACEMENT REINFORCING STEEL SHALL BE INCLUDED IN THE COST OF "GALVANIZED BAR REINFORCEMENT GRADE 60".
- APPROPRIATELY SIZED MECHANICAL SPLICES, IF APPROVED BY THE ENGINEER, MAY BE PERMITTED IN LIEU OF LAP SPLICES. NO ADDITIONAL PAYMENT WILL BE PROVIDED FOR THE USE OF MECHANICAL SPLICES.
- IN DETERIORATED AREAS OF CONCRETE, WHERE AREAS OF POP-OUTS ARE CAUSED BY THE REMOVAL OF DETERIORATED CONCRETE, THE FULL DEPTH OF SLAB SHALL BE REPAIRED AND SHALL BE PAID FOR UNDER THE ITEM CODE 818.2010, "BRIDGE DECK REPAIR (FULL DEPTH REMOVAL)". WHERE POP-OUTS ARE CREATED IN SOUND CONCRETE DUE TO REMOVAL OPERATIONS, THEY SHALL BE REPAIRED AT THE CONTRACTOR'S EXPENSE.
- AS DIRECTED BY THE ENGINEER, UPON REMOVAL OF THE FORM WORK, ALL VOIDS AND HONEYCOMB ON THE SURFACE SHALL BE FILLED WITH THE SAME MATERIAL AS USED FOR THE ITEM CODE 818.2010 "BRIDGE DECK REPAIR (FULL DEPTH REMOVAL)" AND FINISHED TO CONFORM TO THE SURROUNDING CONCRETE SURFACE.
- NO FORM WORK SHALL BE LEFT IN PLACE.
- THE COST OF REMOVAL OF THE DETERIORATED CONCRETE INCLUDING THE SAWCUT, AND FURNISHING AND PLACING THE REPAIR MATERIAL SHALL BE INCLUDED FOR PAYMENT UNDER THE ITEM CODE ITEM CODE 818.2010 "BRIDGE DECK REPAIR (FULL DEPTH REMOVAL)" AND ITEM CODE 818.2020 "BRIDGE DECK REPAIR (PARTIAL DEPTH REMOVAL), AS APPLICABLE.
- EXPOSED REINFORCING STEEL IN POP-OUTS CAUSED BY REMOVAL OF DETERIORATED CONCRETE SHALL BE PROTECTED WITH EPOXY COATING. THE COST OF EPOXY COATING SHALL BE INCLUDED IN THE RELEVANT REPAIR TYPE INDICATED ON THE PLANS.
- THE COST OF ADDITIONAL CONCRETE REMOVAL REQUIRED FOR THE REPAIR OF THE REINFORCING STEEL SHALL BE INCLUDED IN THE COST OF THE RELATIVE REPAIR TYPE.
- THE COST OF SAWCUTTING SHALL BE INCLUDED IN THE RELEVANT REPAIR TYPE.
- THE COST OF PROVIDING ACCESS FOR INSPECTION SHALL BE INCLUDED IN THE COST OF THE RELEVANT REPAIR TYPE INDICATED ON THE PLANS.
- THE COSTS OF FURNISHING AND INSTALLING THE GALVANIC ANODES SHALL BE INCLUDED IN THE COST OF THE CONCRETE DECK REPAIR; NO ADDITIONAL PAYMENT WILL BE MADE.
- THE SURFACE OF THE PREPARED AREA, TO RECEIVE THE HP REPAIR CONCRETE, SHALL BE INTENTIONALLY ROUGHENED TO AN AMPLITUDE OF 1/4" (EQUIVALENT TO ICRI CONCRETE SURFACE PROFILE 10).

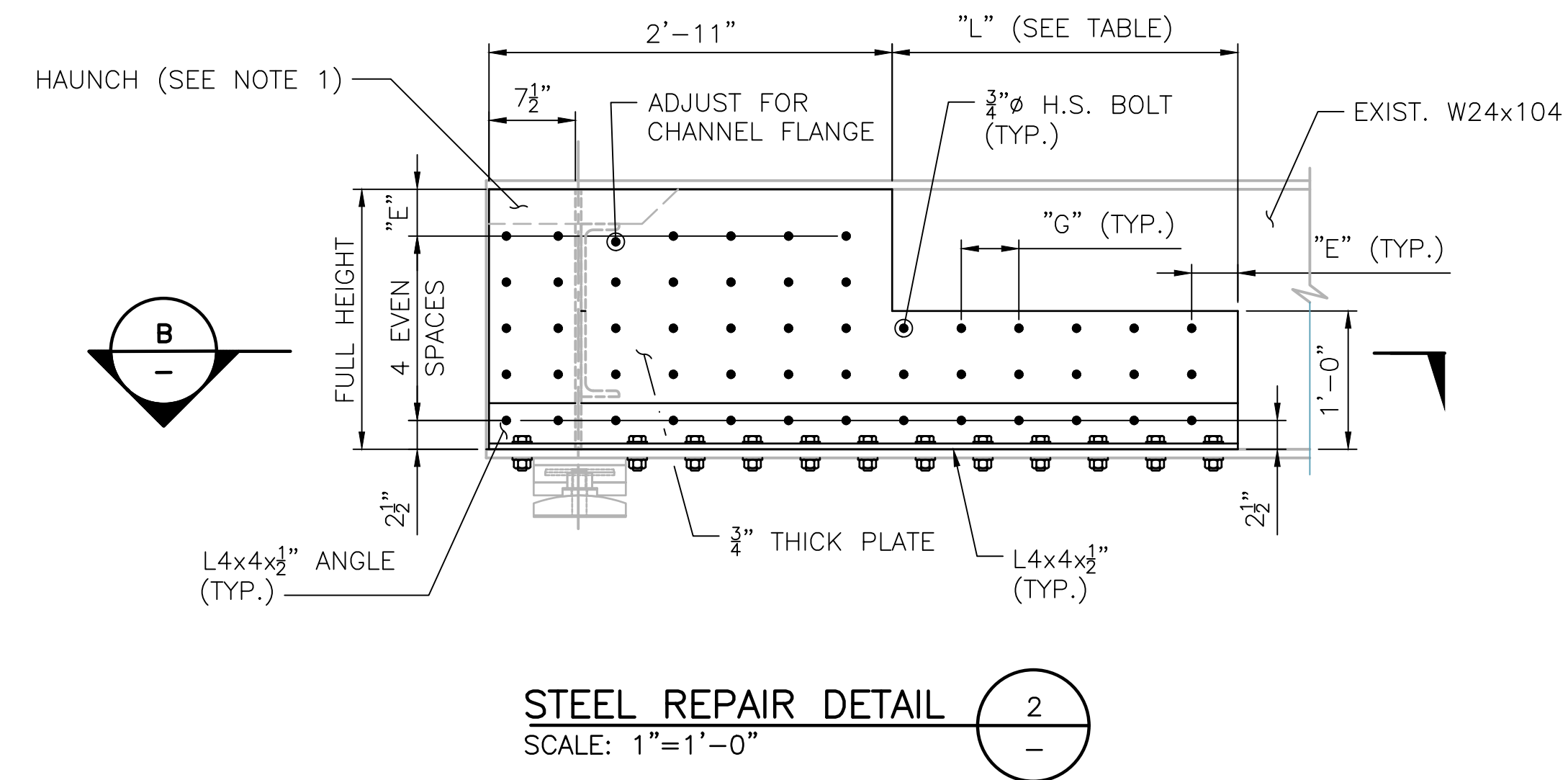
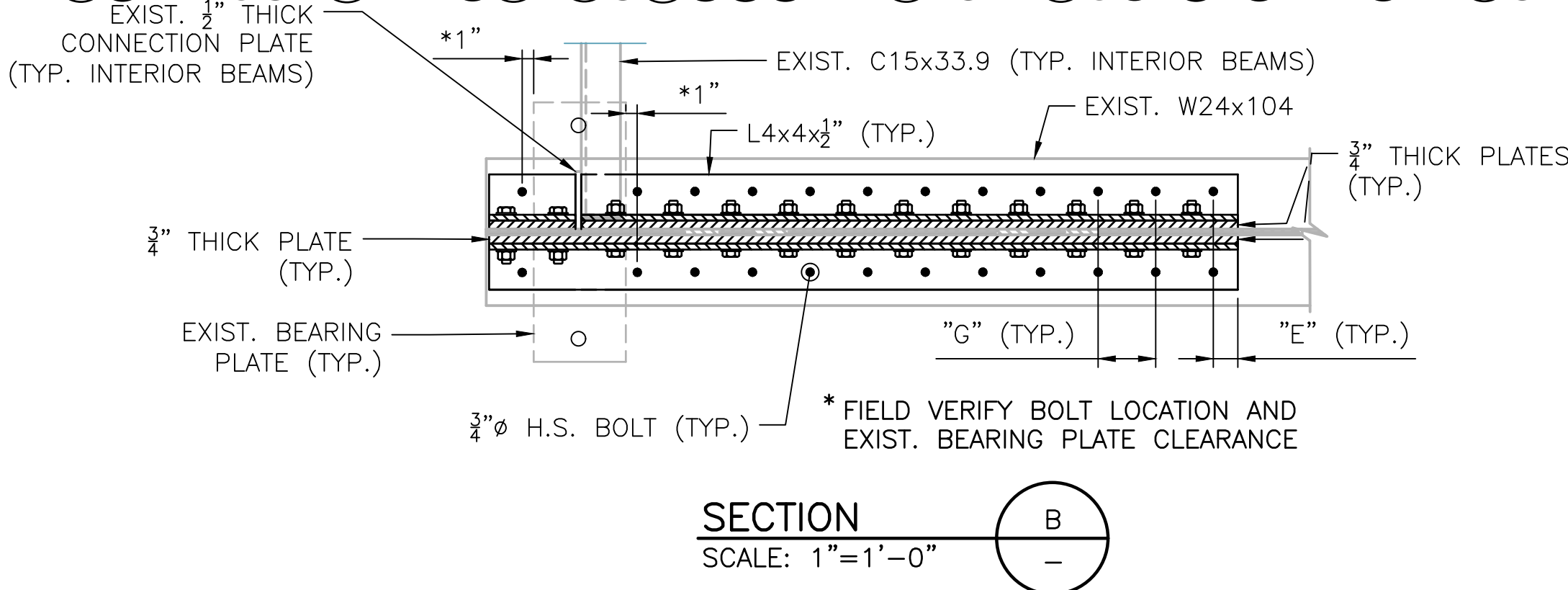
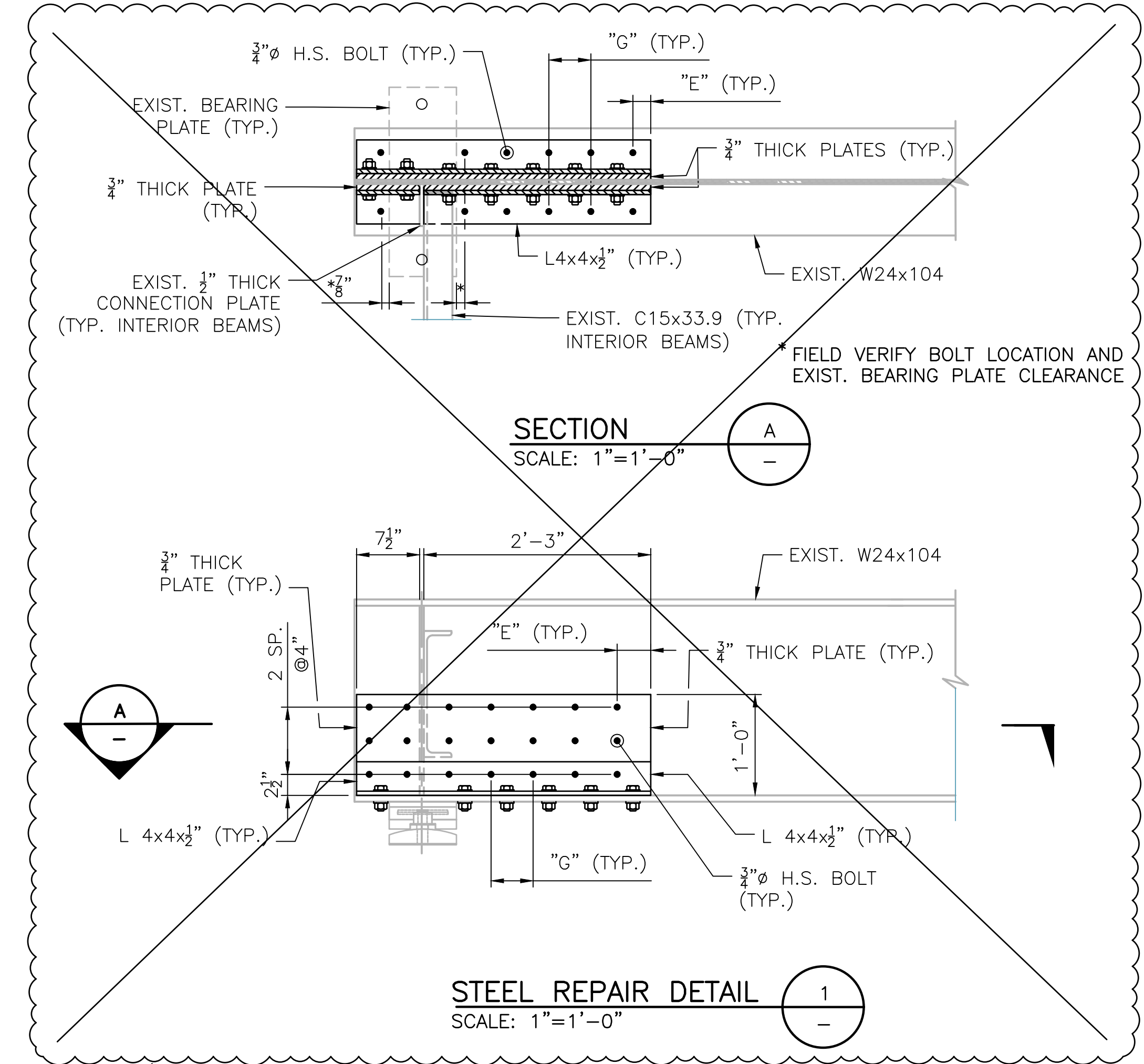
1

		RHODE ISLAND DEPARTMENT OF TRANSPORTATION	DESIGNED BY: XX CHECKED BY: XX DATE: SEPT 2024 SHEET: OF: 52	WOONSOCKET CORRIDOR VOLUME: 3 BRIDGE 095301 CONC. DECK AND SIDEWALK REPAIR DETAILS - 2	
				WOONSOCKET RHODE ISLAND	
				2607D_V3_028_BRIDGE 095301 DECK_SIDEWALK REPAIR 2_ADD02	

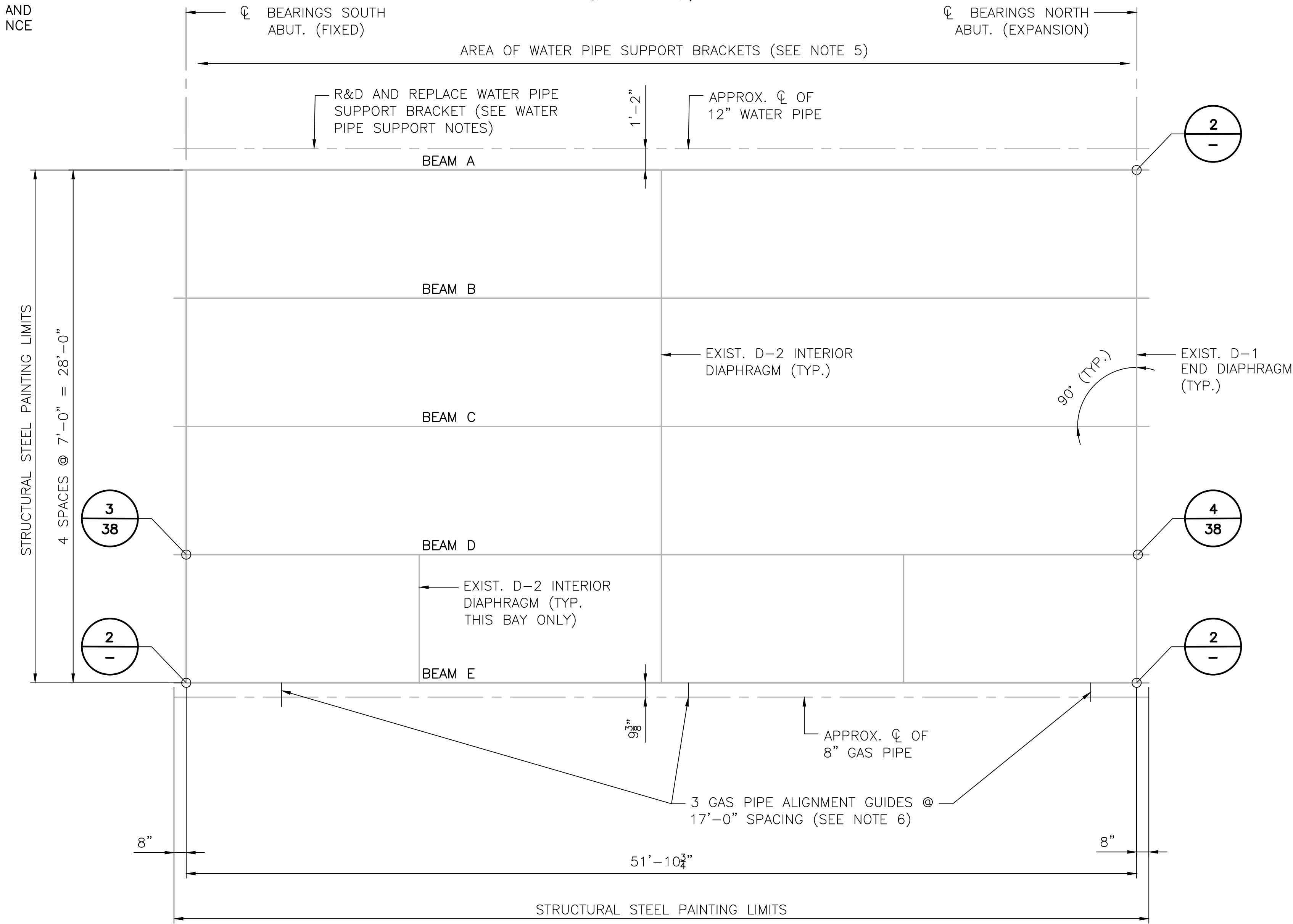
RI CONTRACT NO.	FISCAL YEAR	SHEET NO.	TOTAL SHEETS
2025-CB-031	2025	37	52

WATER PIPE SUPPORT NOTES:

- WATER PIPE SUPPORT TO BE REPLACED IN-KIND. SEE EXISTING SUPPORT DETAILS ON PREVIOUS SHEET.
- NEW SUPPORT TO BE INSTALLED DIRECTLY ADJACENT TO THE EXISTING SUPPORT PRIOR TO REMOVAL OF THE EXISTING SUPPORT. LOCATION TO BE APPROVED BY THE ENGINEER.
- PAYMENT FOR THIS WORK SHALL BE INCLUDED UNDER ITEM CODE 824.9901.



AND
NCE



STEEL NOTES:

- SEE BRIDGE GENERAL NOTES SHEET FOR ADDITIONAL STEEL REPAIR NOTES.
- THE SUPERSTRUCTURE SHALL BE FULLY PAINTED. SEE BRIDGE GENERAL NOTES SHEET FOR PAINTING SUPERSTRUCTURE STEEL NOTES.
- DECK HAUNCH TO BE REPLACED AS PART OF DECK OVER BACKWALL WORK.
- PROVIDE A MINIMUM 2" CLEARANCE BETWEEN THE ENDS OF THE STEEL BEAM AND ABUTMENT BACKWALL.
- THE WATER PIPE IS TO BE FULLY SUPPORTED AT ALL TIMES. WATER PIPE SUPPORTS ARE ANTICIPATED AT EACH PIPE JOINT AND MIDWAY BETWEEN JOINTS. HANGER RODS PENETRATE THE TOP DECK AND TERMINATE IN THE VOID OF THE SIDEWALK. BASED ON CONDITION AND FIELD LOCATIONS, PROPOSED STEEL REPAIRS MAY CONFLICT WITH EXISTING SUPPORTS. IF CONFLICTS EXIST, MODIFICATIONS/REPLACEMENT MAY BE REQUIRED AND ARE TO BE APPROVED BY THE ENGINEER. COORDINATE HANGER REPAIR/REPLACEMENT WITH STEEL AND SIDEWALK REPAIRS.
- GAS PIPE IS TO BE FULLY SUPPORTED AT ALL TIMES. GAS PIPE GUIDES ATTACH TO THE STEEL BEAM AND LOCATIONS ARE ANTICIPATED AS SHOWN ON THE PLANS. GAS PIPE GUIDE LOCATIONS SHALL BE FIELD VERIFIED PRIOR TO WORK TO ENSURE NO REPAIR CONFLICTS EXIST. IF CONFLICTS EXIST, MODIFICATIONS/REPLACEMENT MAY BE REQUIRED AND ARE TO BE APPROVED BY THE ENGINEER.
- BEVEL NEW PLATES AND ANGLES AS REQ'D TO CLEAR EXISTING FILLET WELDS.
- CONTRACTOR SHALL SCHEDULE THIS WORK SO THAT THE NEW DECK HAUNCH IS PLACED AFTER THE REPAIR PLATES ARE IN PLACE. REMOVAL OF PORTIONS OF THE NEW DECK HAUNCH WILL NOT BE ALLOWED.

EXISTING FRAMING PLAN

SCALE 1/4"= 1'-0"

REPAIR DETAIL 2 DIMENSIONS		
BEAM	LOCATION	"L"
E	SOUTH ABUT.	1'-8"
A	NORTH ABUT.	12'-1"
E	NORTH ABUT.	5'-0"

TYPICAL BOLT SPACINGS		
LOCATION	MIN.	MAX.
EDGE DISTANCE - "E"	1 1/2"	4"
GAUGE - "G"	3"	6"

UNLESS OTHERWISE NOTED, THE ABOVE BOLT SPACINGS SHALL BE UTILIZED IN THE FABRICATION OF THE STEEL REPAIR PLATE/MEMBERS.



RHODE ISLAND
DEPARTMENT OF TRANSPORTATION

DESIGNED BY: XX
CHECKED BY: XX
DATE: SEPT 2024
SHEET:
OF: 52

REVISIONS			REVISIONS		
NO.	DATE	BY	NO.	DATE	BY
1	9/29/25	JSC			

WOONSOCKET CORRIDOR
VOLUME: 3
BRIDGE 095301 - STEEL REPAIR DETAILS - 1



Quantity Backup Table of Contents

WOONSOCKET CORRIDOR

R.I. Contract No. - 2025-CB-031

BRO-0963(001)

3RD-PRTY(365)

Item	Item Code	Description	UM	Quantity	Page
78	818.2010	PORTLAND CEMENT CONCRETE DECK REPAIRS (FULL DEPTH REMOVAL)	SF	600	78
79	818.2020	PORTLAND CEMENT CONCRETE DECK REPAIRS (PARTIAL DEPTH REMOVAL)	SF	600	79
80	820.0100	CONCRETE SURFACE TREATMENT PROTECTIVE SEALER	SF	550	80
81	821.0100	SAW & SEALING JOINTS IN ASPHALT CONCRETE PAVEMENT	LF	100	81
82	822.1695	SILICONE HIGHWAY JOINT SEALER	LF	1000	82
83	823.1750	ASPHALTIC EXPANSION JOINT SYSTEM	LF	40	83
84	824.2000	STRUCTURAL STEEL	LBS	0	84
85	824.9901	STEEL REPAIRS	LBS	2550	85
86	825.8040	PAINTING EXISTING STRUCTURE STEEL	SF	2000	86
87	825.8050	SURFACE PREPARATION FOR EXISTING STEEL	SF	2000	87
88	830.1000	METAL BRIDGE RAILING	LF	80	88
89	833.0400	GRANITE IDENTIFICATION TABLETS	EA	4	89
90	834.0100	GRANITE CURB FOR BRIDGES	LF	140	90
91	836.0100	STRUCTURAL CONCRETE CRACK REPAIR BY EPOXY-RESIN BASE ADHESIVE INJECTION	LF	60	91
92	839.0400	FULL DEPTH REMOVAL AND DISPOSAL OF ASPHALT PAVEMENT FROM CONCRETE BRIDGE DECKS	SY	500	92
93	844.0100	MOBILIZATION AND DEMOBILIZATION OF MICROPILE EQUIPMENT	LS	1	93
94	844.0300	VERIFICATION LOAD TEST	EACH	1	94
95	844.0400	PROOF LOAD TEST	EACH	1	95
96	844.0200	MICROPILE	EACH	29	96
97	901.1000	STEEL BEAM GUARDRAIL	LF	550	97
98	901.1050	GUARDRAIL CONNECTION TO END POST	EACH	13	98
99	901.1100	STEEL BEAM GUARDRAIL APPROACH END TREATMENT	EACH	5	99
100	901.1200	GUARDRAIL END TREATMENT PLATFORM	EACH	5	100
101	901.1300	STEEL BEAM GUARDRAIL ANCHORAGE TRAILING END SECTIONS	EACH	5	101
102	903.0510	FENCE - PERMANENT ALL TYPES AND SIZES	LF	150	102
103	904.0100	REMOVE AND RESET FENCE AND/OR RAILING	LF	100	103
104	905.1000	PORTLAND CEMENT CONCRETE SIDEWALKS AND DRIVEWAYS	SY	6550	104
105	906.0310	GRANITE CURB	LF	3030	105
106	906.0320	PRECAST CONCRETE CURB	LF	100	106
107	906.0700	REMOVE, HANDLE, HAUL TRIM RESET CURB EDGING, STRAIGHT, CIRCULAR ALL TYPES	LF	2300	107
108	919.0101	TEST PITS	EACH	8	108
109	920.0320	RIPRAP R-3, R-4, R-5 STANDARD 8.3.0	SY	280	109
110	920.0330	RIPRAP R-6, R-7, R-8 STANDARD 8.3.0	SY	160	110
111	929.0110	FIELD OFFICE	PMO	24	111
112	936.0110	MOBILIZATION	LS	1	112
113	937.0100	FURNISH, INSTALL, MAINTAIN, AND MOVE TEMPORARY TRAFFIC PROTECTION	LS	1	113
114	945.0200	REMOVE AND SALVAGE TRAFFIC SIGNAL EQUIPMENT	LS	1	114
115	999.9901	MISCELLANEOUS WORK	EACH	75000	115
116	L01.0102	LOAM BORROW 4 INCHES DEEP	SY	850	116



200 Main Street
Pawtucket, RI 02860
Tel. 401.726.4084
Fax: 401.728.1533

Project:	Woonsocket Corridor	Estimator	Date
RICN	2025-CB-031	TL	5/30/2025
PTS ID	2607D	Rev.	Date
OSP ID	TCB25005700		
Office ID	41110.05		
		Sheet	86

DISTRIBUTION OF QUANTITIES

ITEM CODE: 825.8040 PAINTING EXISTING STRUCTURAL STEEL

UM: SF

PROJECT WIDE

Location

TOTAL

Bridge 093901 - River Street	53
Bridge 095301 - Wood Ave.	1767
Bridge 095401 - Diamond Hill Rd.	0
Bridge 068801 - Mill St	179

As Directed by Engineer

1

TOTAL 2000 SF

Questions and Answers for RICN 2025-CB-031

Question Ask By	Question	Answer	Date Submitted	Date Responded
Aetna Bridge Company	Bridge 095301, Sheet 37 has a steel repair detail 1 but the framing plan does not indicate a location for repair detail 1. Please confirm if there is a repair using this detail and the location(s)?	This detail will be removed from the plans by addendum.	Sep 25, 2025 4:27 PM	Sep 29, 2025 3:53 PM
Aetna Bridge Company	At Bridge 068801 the existing dam appears to have extensive deterioration but the drawings do not call for any repair work other than the pressure grouting at the interface with the apron. Please confirm there are is no repair work to be done on the existing dam structure.	No repair work, other than what is shown in the Plans, is proposed for the dam structure.	Sep 25, 2025 4:24 PM	Sep 29, 2025 3:53 PM
Aetna Bridge Company	All the water crossing bridges contain varying quantities of debris that is within the limits of work in the channel. The scopes call for removal and disposal at several of the bridges but does not say how the work is paid except at bridge 068801 which says the work is incidental to Item 201.0321 Clearing and Grubbing. The work to remove the debris from the channel is unrelated to clearing and grubbing which is paid by the SY. Please consider paying for this work on either force account or by creation on a new item.	Removal and disposal of debris within the channel is only proposed at Bridge 068801. This work is considered incidental to Item Code 201.0321.	Sep 25, 2025 4:14 PM	Sep 29, 2025 3:53 PM
J.R. Vinagro Corporation	Please clarify where item 202.0700 common borrow is needed along Diamond Hill Road since the roadway is being lowered.	Pursuant to coordination with the Department, Item 202.0700, Common Borrow, has been incorporated into the project as a contingency item and shall be utilized as directed by the Engineer.	Sep 25, 2025 1:06 PM	Sep 26, 2025 10:54 AM
J.R. Vinagro Corporation	Since the reclaimed material needs to be stockpiled, does the department have an area designated for the stockpiled material.	The Contractor shall be responsible for locating and securing laydown and/or stockpile area(s) at no cost to the RIDOT.	Sep 25, 2025 10:13 AM	Sep 26, 2025 10:52 AM
J.R. Vinagro Corporation	Please clarify if items 818.2010 & 818.2020 includes repairs to the sidewalk or just the deck.	Sidewalk repairs will be paid for under Item Codes 818.2010 & 818.2020; see Sidewalk Repair Note 6 on Sheet No. 29.	Sep 25, 2025 9:47 AM	Sep 29, 2025 3:54 PM
J.R. Vinagro Corporation	If all the reclaimed materials needs to excavated, stockpiled and replaced in order to achieve the curb reveal, why is calcium chloride required in the full depth reclamation. It is added cost that is not necessary.	Item 406.0200 Full Depth Reclamation with Calcium Chloride will remain in the project.	Sep 25, 2025 9:40 AM	Sep 26, 2025 10:52 AM

J.R. Vinagro Corporation	Response to Question #25 states that excavation below existing pavement structure is paid under Earth Excavation (202.0100). The existing pavement structures is 18.5" per the pavement cores. The new pavement structure is 20". Therefore, the excavation required below the existing pavement structure is approx. 5.5" to 7.5" in order to get the achieve 4"-6" curb reveal. Section 406.05 states that removal and disposal of unsuitable material is included in 406. The DOQ for Item 202.0100 shows 18" of excavation. Should this be 5.5"-7.5" and remaining excavation is paid under 406.	The 18 inches of excavation is provided as an estimate. Payment to the Contractor will be made for the actual quantity of cubic yards excavated below the existing pavement structure, as determined by field conditions.	Sep 25, 2025 9:32 AM	Sep 26, 2025 10:53 AM
J.R. Vinagro Corporation	Please clarify that in order to lower the road at Diamond Hill Road, all the reclaimed material needs to excavated and stockpiled , excavate additional material below the subgrade , and then place and compact the stockpiled reclaimed material. How is this accomplished when the TMP only allows lane closures from 6 pm to 6 am.	The sequence of construction for reclamation work will be determined based on the means and methods selected by the Contractor in accordance with the TMP.	Sep 25, 2025 9:12 AM	Sep 26, 2025 10:53 AM
J.R. Vinagro Corporation	DOQ includes 10 cy for Item 808.0602 for bridge 953. The plans show 5 cy. Please clarify where the remaining quantity is located.	The total quantity includes a contingency, the actual quantity will be as measured in the field.	Sep 25, 2025 8:55 AM	Sep 29, 2025 3:54 PM
J.R. Vinagro Corporation	Please clarify how the shielding on Bridge 963 is paid for?	Payment for any required temporary shielding for Bridge 096301 shall be considered incidental to the item of work for which it is required. No additional payment will be made.	Sep 25, 2025 8:54 AM	Sep 29, 2025 3:54 PM
J.R. Vinagro Corporation	How is the parapet replacement for Diamond Hill paid for? Is it 808.0322 End Posts? If so the plans only show 1.5 CY not 10 CY. Is there more parapet to be removed and replaced?	There is no existing parapet at Bridge 095401 (Diamond Hill Road). The actual quantity of Item Code 808.0322 will be as measured in the field.	Sep 25, 2025 8:11 AM	Sep 29, 2025 3:55 PM
J.R. Vinagro Corporation	Item 808.1502 - DOQ includes 45 cy for Diamond Hill Road. The plans only show approx. 5 cy for the 4 corners. Does this quantity include the partial and full depth repairs of the sidewalks since the plans state that repairs for the partial and full depth repairs of the sidewalks is paid under 818.2010 and 818.2020.	The concrete for the sidewalk moment slabs at Bridge No. 095401 (Diamond Hill Road) is paid for under Item Code 808.1502. There are no repairs proposed for the sidewalk at this location; the entire sidewalk is being replaced with the sidewalk moment slabs.	Sep 25, 2025 8:06 AM	Sep 29, 2025 3:55 PM

John Rocchio Corporation	Is a class C slip coefficient acceptable for the splices as that is what galvanizing provides? If not, how should the splice faying surfaces be coated?	The splices shall have Class B faying surfaces as specified in the Plans.	Sep 24, 2025 12:07 PM	Sep 29, 2025 3:56 PM
John Rocchio Corporation	Please provide the adjusted quantity for Item 825.8040 indicated to be issued by addendum in Q&A question #5.	The adjusted quantity will be provided by addendum.	Sep 24, 2025 11:51 AM	Sep 29, 2025 3:56 PM
John Rocchio Corporation	The contract quantity for Removal and Disposal of Existing Concrete Masonry is 130 CY. There is only 110 CY total replacement contract quantity. Please evaluate the demolition item quantity as 15 CY of new concrete was deleted in Addendum 1.	A contingency has been provided in the quantity for this item, the actual quantity will be as measured in the field.	Sep 24, 2025 11:49 AM	Sep 29, 2025 3:56 PM
John Rocchio Corporation	What angle size is required for utility supports U-2 and U-4?	This information was included in Addendum No. 1.	Sep 24, 2025 11:46 AM	Sep 29, 2025 3:56 PM
RICON CONSTRUCTION LLC	Why would the contractor need to excavate 18" in the reclaimed areas per note on sheet 5	The proposed work on Diamond Hill Road (west of Social Street) is intended to lower the roadway profile to achieve a 4–6 inch curb reveal while minimizing impacts at the back of existing or new sidewalks. An approximate 18-inch cut was used for estimating purposes in coordination with the Department. The actual excavation depth shall be based on meeting the design intent and on final grades established by the Contractor in accordance with Special Provision 934.9901 – Pre-Construction Survey & Design (Addendum No. 1). Excavation below the existing pavement structure shall be paid under Item 202.0100 – Earth Excavation per Section 202 of the RI Standard Specifications for Road and Bridge Construction, February 2025 Edition, with all applicable revisions.	Sep 19, 2025 2:01 PM	Sep 22, 2025 1:29 PM
RICON CONSTRUCTION LLC	Please clarify if reclaimed base or new gravel is being used in reclaimed areas. DOQ shows excavating and installing 12" of new gravel	It is anticipated that reclaimed base shall be placed in reclaimed areas. Item 302.0100 Gravel Borrow Subbase Course has been revised as part of Addendum No.1.	Sep 19, 2025 2:00 PM	Sep 22, 2025 1:28 PM
RICON CONSTRUCTION LLC	Please clarify the sequence of construction for the reclamation work	The sequence of construction for reclamation work will be determined based on the means and methods selected by the contractor.	Sep 19, 2025 1:59 PM	Sep 22, 2025 1:27 PM

J.R. Vinagro Corporation	Is calcium required for the reclamation?	Calcium Chloride is required in accordance with Section 406 of the of the RI Standard Specifications for Road and Bridge Construction, February 2025 Edition, with all applicable revisions.	Sep 18, 2025 10:47 AM	Sep 19, 2025 2:36 PM
J.R. Vinagro Corporation	Is there rideability required on this project?	Rideability is required in accordance with Section 413 of the of the RI Standard Specifications for Road and Bridge Construction, February 2025 Edition, with all applicable revisions.	Sep 18, 2025 10:46 AM	Sep 19, 2025 2:36 PM
J.R. Vinagro Corporation	Item 807.0100 Stone Masonry - Please clarify what needs to be completed for this work since plans only call to point and grout.	Item Code 807.0100 is provided as a contingency for any needed stone masonry repairs/reconstruction.	Sep 18, 2025 10:06 AM	Sep 18, 2025 4:07 PM
J.R. Vinagro Corporation	How is the removal of pavement on Bridge 963 paid for?	Removal of the pavement on Bridge No. 096301 is paid for under Item Code 803.9901.	Sep 18, 2025 8:54 AM	Sep 18, 2025 4:06 PM
J.R. Vinagro Corporation	P-2 - How is the reclamation and excavation paid for? Per 406 of the standard specs it should be paid by the SY. Also P-2 states to excavate 18" of the existing soil, is this a typo and should be 8".	Reclamation of the existing pavement structure (pavement and gravel) shall be paid under Item 406.0200 – Full Depth Reclamation with Calcium Chloride, added by Addendum No. 1. The proposed work on Diamond Hill Road (west of Social Street) is intended to lower the roadway profile to achieve a 4–6 inch curb reveal while minimizing impacts at the back of existing or new sidewalks. An approximate 18-inch cut was used for estimating purposes in coordination with the Department. The actual excavation depth shall be based meeting the design intent and on final grades established by the Contractor in accordance with Special Provision 934.9901 – Pre-Construction Survey & Design (Addendum No. 1). Excavation below the existing pavement structure shall be paid under Item 202.0100 – Earth Excavation per Section 202 of the RI Standard Specifications for Road and Bridge Construction, February 2025 Edition, with all applicable revisions.	Sep 18, 2025 8:47 AM	Sep 19, 2025 2:35 PM

John Rocchio Corporation	Item 808.0324 Concrete Substructure Class HP 3/4" Bridge Sidewalk indicates a quantity of 14 CY at River Street. There is no bridge sidewalk removal or replacement shown in the plans for this location, only about 15 SY of standard 43.1.0 sidewalk at the corner of West School Street. Please provide removal and installation limits and details if additional areas are to be replaced.	Item Code 808.0324 will be removed from the project by addendum.	Sep 18, 2025 6:57 AM	Sep 18, 2025 4:06 PM
John Rocchio Corporation	Item 807.0500 Pointing & Grouting indicates a quantity of 500 LF of wall for River Street. The plans show about 180 LF on Volume 3 Sheet 18. Please advise where the remainder of the quantity is to be performed in that location.	The actual quantity will be as directed by Engineer in the field. The quantity given provides for a contingency.	Sep 18, 2025 6:51 AM	Sep 18, 2025 4:06 PM
J.R. Vinagro Corporation	905.04 states that removal of existing sidewalks is incidental to the new sidewalks. Please clarify how removal of existing pavement structures is paid for when replaced with new sidewalks.	Existing pavement structures within new cement concrete sidewalk areas shall be paid under Item 201.0417 Removal and Disposal of Pavement, added by Addendum No. 1.	Sep 17, 2025 1:55 PM	Sep 19, 2025 2:37 PM
John Rocchio Corporation	Volume 3 Plan Sheet 8 shows a pay limit for Temporary Deck Underside Protective Shielding. There is no item for this work- please advise how this work is paid.	Item Code 803.0500 will be added to the project by addendum.	Sep 16, 2025 1:27 PM	Sep 17, 2025 10:53 AM
Aetna Bridge Company	Item 824.2000 Structural Steel DOQ has 70 LBS at Diamond Hill Road Bridge 095401. Please indicate what steel is included in this item?	Item Code 824.2000 will be removed from the project by addendum.	Sep 15, 2025 12:45 PM	Sep 17, 2025 10:53 AM
Aetna Bridge Company	Item 817.9901 Pressure Grout Voids = 200 CF. The measurement and payment does not indicate if the area of the grout bags used to form the void area is included in the payment for this item. Please advise.	The grout bags will be included for payment under Item Code 817.9901. A revised specification will be added by addendum.	Sep 15, 2025 12:04 PM	Sep 17, 2025 10:53 AM
John Rocchio Corporation	How are temporary fences and gates paid on the project?	Temporary fences and gates are incidental to the demolition items. Resetting and/or relocating temporary fence and/or gates shall be included under Item Code 937.0100. Notes will be added to the Plans by addendum.	Sep 15, 2025 10:40 AM	Sep 18, 2025 4:16 PM
John Rocchio Corporation	Should there be a minimum bid price for Item 21: MAINTENANCE AND CLEANING OF EROSION, SEDIMENT, AND POLLUTION PREVENTION CONTROLS?	There is no minimum bid price for this item.	Sep 15, 2025 10:19 AM	Sep 15, 2025 11:52 AM

John Rocchio Corporation	Will police details be provided and paid by the Department for any of the traffic control locations, or are flaggers required to be provided and paid by the GC in all locations?	Police method of measurement and payments is outlined in RIDOT Standard Specifications Section 913. Use of Police details is outlined in the table provided on Section 913. Use of flagpersons is outlined in Section 914.	Sep 15, 2025 7:25 AM	Sep 15, 2025 12:03 PM
J.H. Lynch & Sons, Inc.	Reference Steel Details - 1 sheet 30 of 50 in Volume 2, for Utility Cross Frames U-2 & U-4 please provide the size of the connection angles that are to be welded to the girder webs as well as the number of bolts that are required for the connection between the MC10 and the angles.	Each angle shall be a L 4x4x1/2, 6" long with two (2) 7/8" H.S. Bolts. A detail will be added to the plans by addendum.	Sep 12, 2025 2:54 PM	Sep 17, 2025 10:52 AM
J.H. Lynch & Sons, Inc.	Reference Steel Details - 1 sheet 30 of 50 in Volume 2, for Utility Cross Frames U-1 & U-3 it is indicated that the holes in the cross frame gusset plates are to be 15/16" diameter and are to be shop-drilled. However, the 1-1/6" diameter holes in the connection plates for these Cross Frames are indicated to be field-drilled? Please clarify as these holes are typically shop drilled.	All holes shall be shop drilled. The detail will be revised by addendum.	Sep 12, 2025 2:54 PM	Sep 17, 2025 10:52 AM
John Rocchio Corporation	Will metallizing/sealing of the girders and splice plates be an acceptable alternative to hot-dip galvanizing?	All structural steel shall be hot-dip galvanized.	Sep 12, 2025 9:38 AM	Sep 12, 2025 2:39 PM
Aetna Bridge Company	The DOQ for Item 825.8040 Painting Existing Structural Steel includes painting for Bridge 095401 - Diamond Hill Road. The only painting at this location is the shop color galvanizing and painting of the new 4-bar bridge rail. Please confirm this quantity will be paid for the shop painting of this new rail.	Coating of the metal bridge rail is paid for under Item 830.1000. The quantity of Item 825.8040 will be corrected by addendum.	Sep 10, 2025 1:14 PM	Sep 12, 2025 2:38 PM
Aetna Bridge Company	Is it acceptable to perform the verification load test outside the bridge footprint and travel lanes prior to the 4.5 month detour for phase 1 construction in order to begin production piles immediately after demolition.	Locating the pile load test outside the bridge footprint and travel lanes will be acceptable provided the test site is protected by traffic barrier and does not impede on vehicular or pedestrian access.	Sep 10, 2025 12:59 PM	Sep 12, 2025 2:38 PM
Aetna Bridge Company	Given the amount of work required to complete phase 1 of Bridge 096301 during the 4.5 month detour (Sequence of Construction steps 8 through 23 on Sheet 45) will precast substructures be considered an acceptable alternate to the CIP design show.	Precast substructures will be allowed provided the details are similar to what is shown on the Plans.	Sep 10, 2025 12:54 PM	Sep 12, 2025 2:37 PM

Aetna Bridge Company	The TMP allows for a 4.5 month detour on Privilege Street to complete the phase 1 work on Bridge 096301. Please confirm there are no time of year restrictions for this time period.	Privilege Street Bridge 096301 Phase 1 shall be open to traffic by September 29, 2026 per Section 108.1000 in the JS Pages.	Sep 10, 2025 12:49 PM	Sep 12, 2025 2:37 PM
Aetna Bridge Company	Is the use of SIP forms acceptable for Bridge No. 096301 accept at the phase line?	All deck forms shall be of the removable type as noted in the Bridge General Notes.	Sep 10, 2025 12:44 PM	Sep 12, 2025 2:37 PM