

## SECTION 00 91 13

### ADDENDUM

December 15, 2025

#### ADDENDUM NO. 5

TO: Prospective Bidders

FROM: Foth Infrastructure & Environment, LLC  
15 Creek Road  
Marion MA 02738

RE: New Bedford Marine Commerce Terminal  
Phase 3 Bulkhead Replacement (Site 4)  
Massachusetts Clean Energy Technology Center  
Contract No. MACEC-FY26-02

This addendum forms a part of the Contract Documents and modifies the original Bidding Documents published on November 11, 2025.

Acknowledge receipt of this addendum in the space provided on the Bid Form. Failure to do so may subject the Bidder to disqualification.

#### QUESTIONS AND RESPONSES RECEIVED DURING THE BIDDING PERIOD

1. Q: Reference: Reinforcing Steel for both Cast In Place and Precast Concrete

See Reinforcing Notes 1 & 2 on Drawing G-007 General Notes (Marine Infrastructure 2 of 2). Note 1 indicates that reinforcing steel is to be black, uncoated while Note 2 indicates that reinforcing steel shall be epoxy coated. Additionally, ASTM 767 is applicable to the fabrication of hot-dipped galvanized rebar. Neither Specification Sections 03 33 00, Cast-In-Place Concrete or 03 45 33, Precast Structural Concrete, indicate the required coating for reinforcing steel. Please clarify whether reinforcing steel is to be black/uncoated, epoxy coated, or hot dipped galvanized and where each type of uncoated/coated reinforcing steel is to be placed in the structure.

##### REINFORCING:

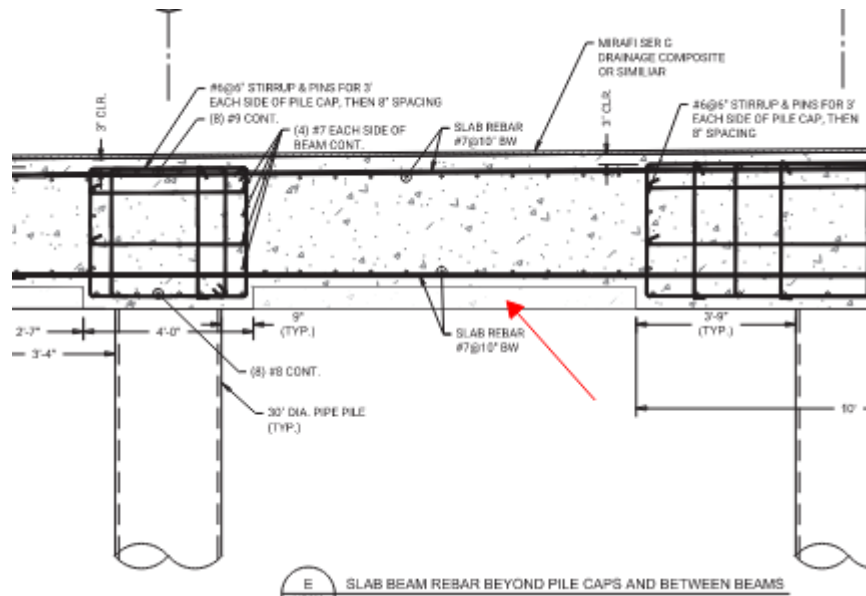
1. REINFORCING STEEL SHALL BE PLAIN, UNCOATED AND SHALL CONFORM TO THE REQUIREMENTS OF ASTM A615 GRADE 60.
2. DETAILING, FABRICATION, AND ERECTION OF REINFORCING STEEL SHALL BE EPOXY COATED IN ACCORDANCE WITH ASTM A775 OR ASTM 767 AND CONFORM TO THE REQUIREMENTS OF ACI-318 AND ACI-315 'DETAILS AND DETAILING OF CONCRETE REINFORCEMENT'.
3. REINFORCEMENT SHALL CONFORM TO BUILDING CODE REQUIREMENTS FOR STRUCTURAL CONCRETE (ACI 318-19), ACI DETAILING MANUAL (SP-66), CRSI MANUAL OF STANDARD PRACTICE (MSP), AND THE STRUCTURAL WELDING CODE-REINFORCING STEEL (AWS D1.4).

ADDENDUM No. 5

00 91 13 - 1

A: Black/uncoated rebar to be used in the project for both cast-in-place concrete and precast concrete elements. For all concrete elements using black/uncoated reinforcement, corrosion inhibitor shall be added to the concrete mix including both cast-in-place and precast concrete elements.

2. Q: Reference: Question #47 in Addendum No. 2  
Is the intent to form up from the precast planks to create the 6" space below the cast in place slab or can that 6" just be filled with unreinforced concrete? I wasn't sure if it was a weight factor; and if its formed, can rigid foam insulation be used and left in place?



A: The gap may not be filled with concrete. The gap to be filled with rigid foam or equivalent.

Douglas Ernst  
Project Director

END OF ADDENDUM