

THIS PAGE INTENTIONALLY LEFT BLANK

② Addendum No.2: April 3, 2026

① Addendum No.1: April 1, 2026

②① **NOTICE TO CONTRACTORS** (Continued)

PRICE ADJUSTMENTS

This Contract contains price adjustments for hot mix asphalt and Portland cement mixtures, diesel fuel, and gasoline. For reference the base prices are as follows: liquid asphalt \$640.00 per ton, Portland cement \$425.13 per ton, diesel fuel \$4.452 per gallon, and gasoline \$2.955 per gallon, and Steel Base Price Index 362.6 MassDOT posts the **Price Adjustments** on their Highway Division's website at

<https://www.mass.gov/massdot-contract-price-adjustments>

This Contract contains Price Adjustments for steel. See Document 00813 - PRICE ADJUSTMENT FOR STRUCTURAL STEEL AND REINFORCING STEEL for their application and base prices.

MassDOT projects are subject to the rules and regulations of the Architectural Access Board (521 CMR 1.00 et seq.)

Prospective bidders and interested parties can access this information and more via the internet at WWW.COMMBUYS.COM.

BY: Phillip Eng, Interim MassDOT Secretary
Jonathan L. Gulliver, Undersecretary and Highway Administrator
SATURDAY, MARCH 21, 2026

MASSACHUSETTS DEPARTMENT OF TRANSPORTATION HIGHWAY DIVISION

PLAN AND PROFILE OF
 SOUTH STREET, MAIN STREET
 AND SISSON ROAD

IN THE TOWN OF
 HARMWICH
 BARNSTABLE COUNTY

FEDERAL AID PROJECT NO. TAP-SR-30(02)X

HARMWICH
 SOUTH STREET, MAIN STREET & SISSON ROAD

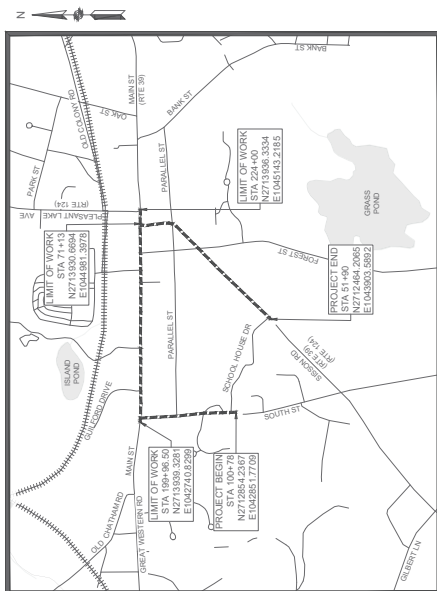
DATE	REVISED DESCRIPTION	SHEET NO.	TOTAL SHEETS
1/11/2025	MASSDOT	1	71
PROJECT FILE NO. 610002			

TITLE SHEET AND INDEX
 APPENDUM NO. 2, APRIL 3, 2026

THESE PLANS ARE SUPPLEMENTED BY THE LATEST EDITIONS OF THE FOLLOWING PUBLICATIONS:
 1. THE MASSDOT STANDARD DRAWINGS FOR SIGNS AND SUPPORTS, THE MASSDOT STANDARD DRAWINGS FOR TRAFFIC SIGNALS AND HIGHWAY LIGHTING, THE MASSDOT OVERHEAD SIGN STRUCTURE AND FOUNDATION STANDARD DRAWINGS, THE MASSDOT TRAFFIC SIGNMENT PLANS AND DETAIL DRAWINGS, AND THE ANSI AMERICAN STANDARD FOR NURSERY STOCK.

INDEX

SHEET NO.	DESCRIPTION
1	TITLE SHEET AND INDEX
2	LEGEND & ABBREVIATIONS
3	NOTES
4	KEY PLAN
5-6	TYPICAL SECTIONS - 1 - 2
7-16	CONSTRUCTION PLAN - 1 - 10
17-26	CURB TIE & GRADING PLAN - 1 - 10
27-36	DRAINAGE & UTILITY PLAN - 1 - 10
37-46	TRAFFIC SIGN & PAVEMENT MARKINGS PLAN - 1 - 10
47	TRAFFIC SIGN SUMMARY
48-50	TEMPORARY TRAFFIC CONTROL PLAN 1 - 3
51-55	CONSTRUCTION DETAILS - 1 - 5
56-71	CROSS SECTIONS - 1 - 16



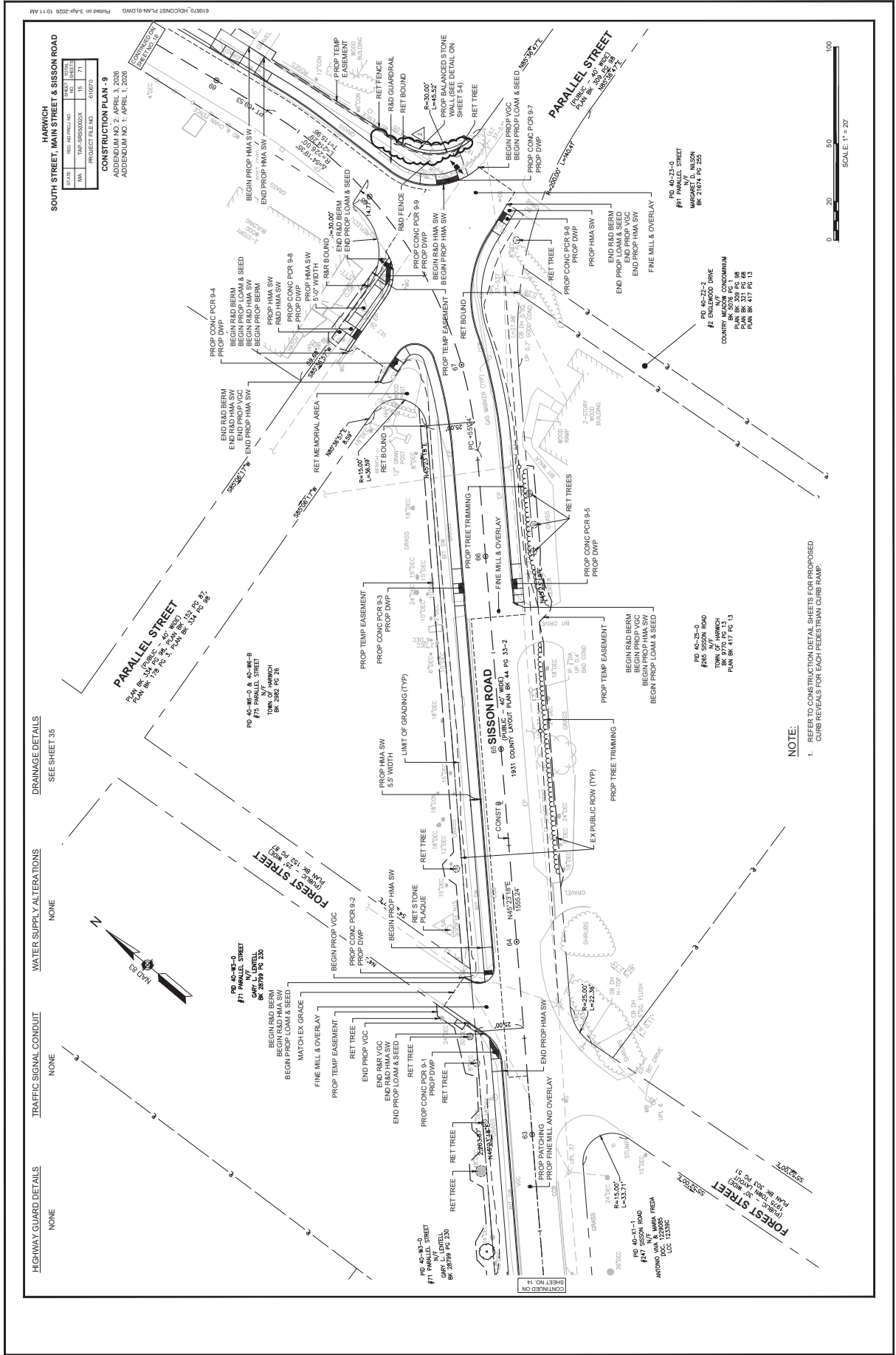
DESIGN DESIGNATION FROM MASSDOT DATA

DESIGN SPEED	SOUTH STREET	MAIN STREET	SISSON ROAD
ADT (2022)	1,278 VPD	5,092 VPD	5,716 VPD
ADT (2042)	1,379 VPD	5,627 VPD	6,316 VPD
K	14%	14%	10%
D	50%	54%	51%
T (PEAK HOUR)	7%	12%	7%
T (AVERAGE DAY)	7%	16%	9%
DDHV	194	788	632
FUNCTIONAL CLASSIFICATION	URBAN MAJOR COLLECTOR	URBAN MINOR ARTERIAL	URBAN PRINCIPAL ARTERIAL



SOUTH STREET LENGTH OF PROJECT = 1076.70 FEET = 0.204 MILES
 MAIN STREET LENGTH OF PROJECT = 2403.50 FEET = 0.455 MILES
 SISSON ROAD LENGTH OF PROJECT = 1923.00 FEET = 0.364 MILES

		APPROVED	DATE
		Carrie Lavallee, P.E. Chief Engineer	03/12/2026

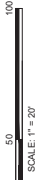


HARWICH
SOUTH STREET, MAIN STREET & SISSON ROAD

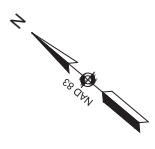
DATE	BY	CHKD
15	71	
15	71	

CONSTRUCTION PLAN - 9
 ADDENDUM NO. 2: APRIL 3, 2026
 ADDENDUM NO. 1: APRIL 1, 2026
 PROJECT FILE NO. 600070

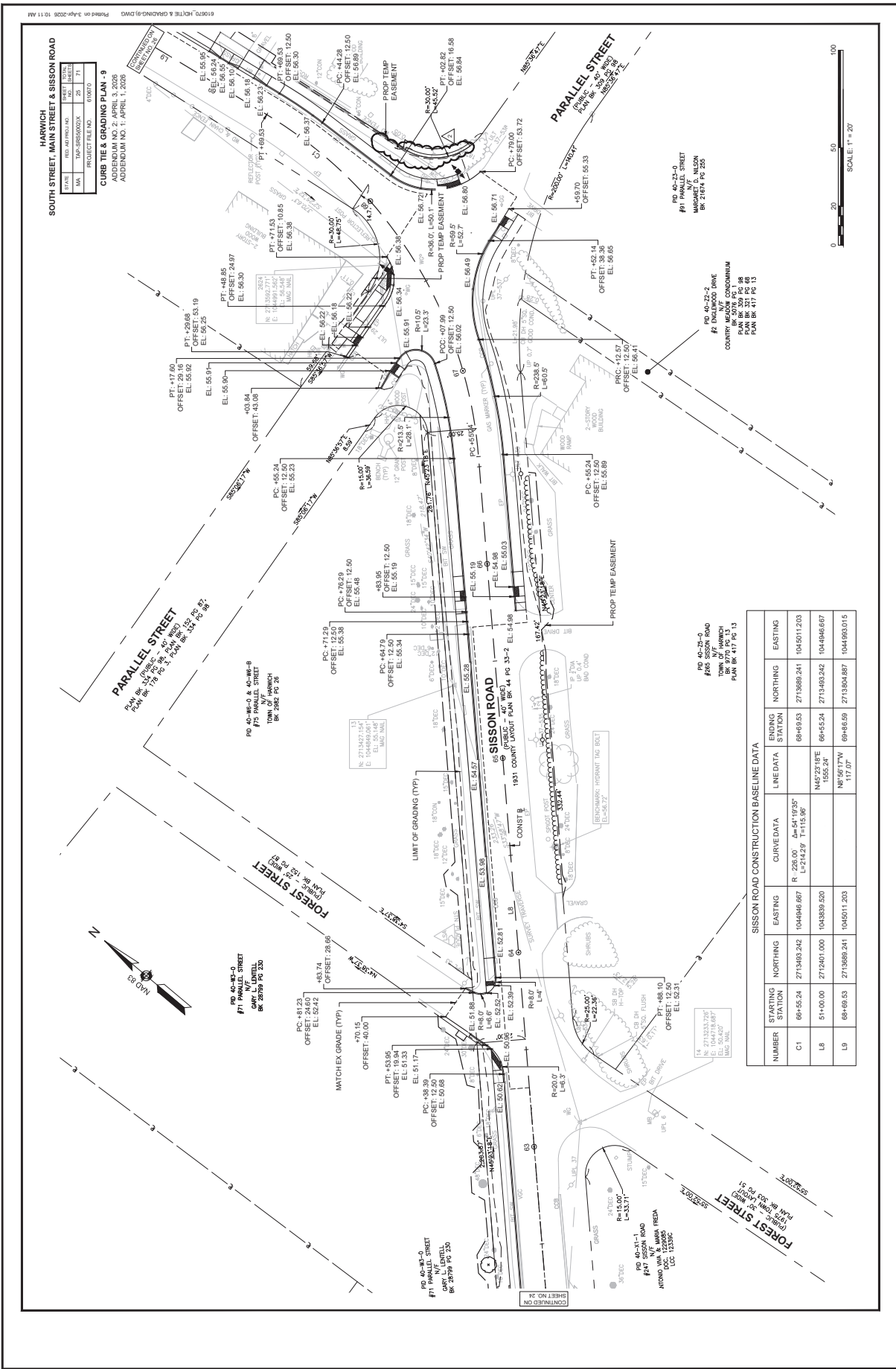
NOTE:
 1. REFER TO CONSTRUCTION DETAIL SHEETS FOR PROPOSED CURB REVEALS FOR EACH PEDESTRIAN CURB RAMP.



HIGHWAY GUARD DETAILS NONE
 TRAFFIC SIGNAL CONDUIT NONE
 WATER SUPPLY ALTERATIONS NONE
 DRAINAGE DETAILS SEE SHEET 35



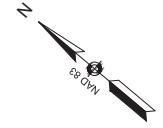
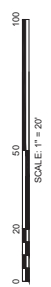
CONTINUED ON SHEET NO. 14



HARWICH
SOUTH STREET, MAIN STREET & SISSON ROAD
 SHEET NO. 24
 TWP. SISSON ROAD
 PROJECT FILE NO. 63070
 CURB TIE & GRADING PLAN - 9
 ADDENDUM NO. 2: APRIL 3, 2026
 ADDENDUM NO. 1: APRIL 1, 2026

SISSON ROAD CONSTRUCTION BASELINE DATA

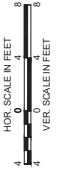
NUMBER	STARTING STATION	NORTHING	EASTING	LINE DATA	ENDING STATION	NORTHING	EASTING
C1	66+55.24	2715493.242	1044946.667	R=226.00 A=54°19'39" L=274.239 T=15.86'	88+69.53	2713989.241	1045011.203
L8	51+00.00	2715401.000	1043839.520	N45°23'18"E 1555.24'	86+55.24	2713493.242	1044846.667
L9	66+69.53	2713989.241	1045011.203	N8°56'17"W 117.07'	86+66.59	2713604.697	1044963.015



CONTINUED ON SHEET NO. 24

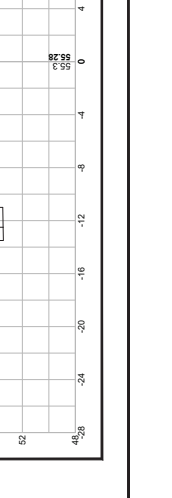
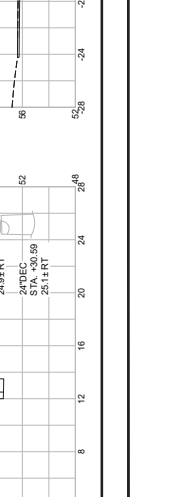
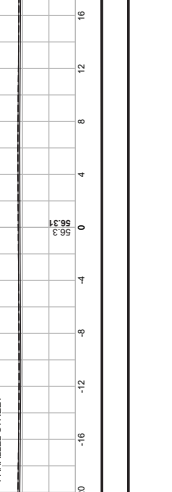
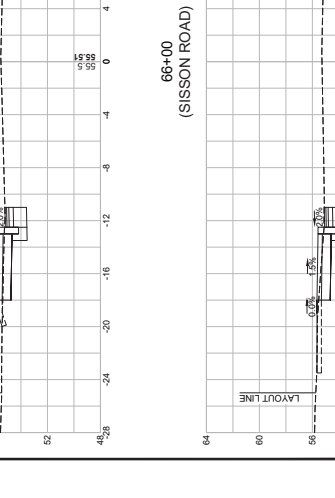
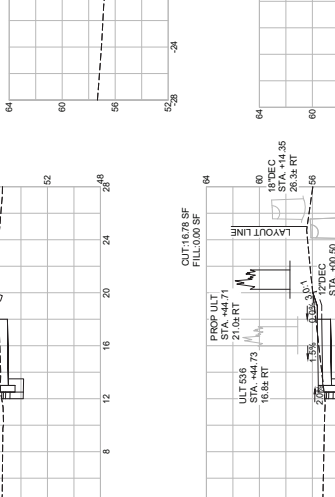
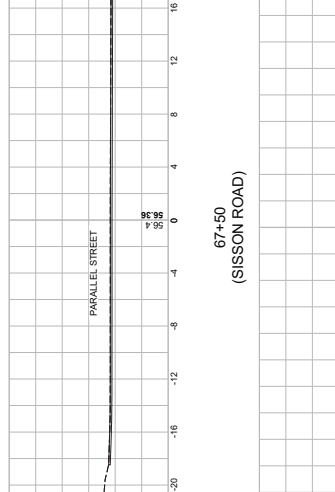
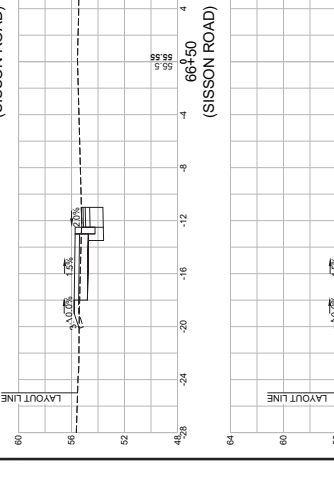
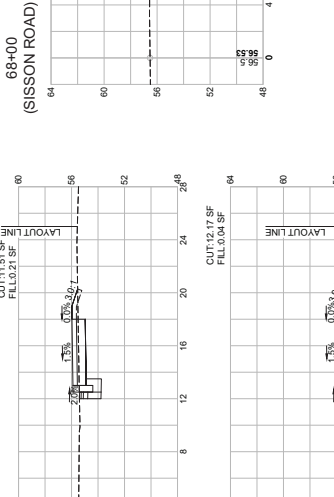
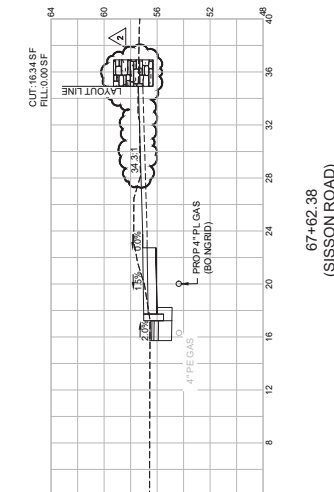
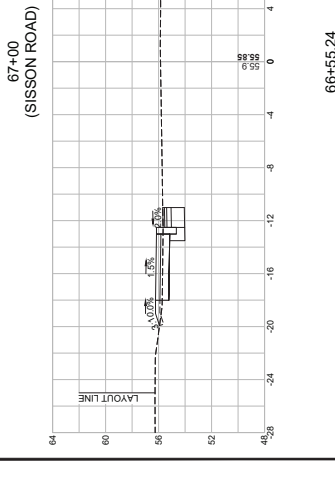
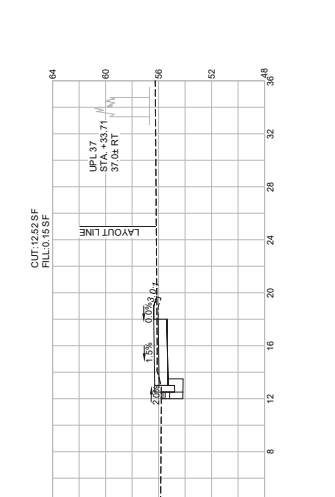
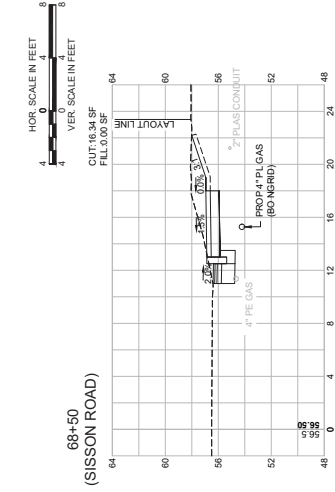
610797.H/CROSS SECTIONS SISSON.DWG
 Printed on 3-Apr-2026 10:03 AM

HARWICH
SOUTH STREET, MAIN STREET & SISSON ROAD



STATE	FILE APPROVAL NO.	DATE
MA	TW-25500004	7/0 7/1
PROJECT FILE NO.	01000	

CROSS SECTIONS - 15
SISSON ROAD
 ADDENDUM NO. 1: APRIL 1, 2026
 ADDENDUM NO. 2: APRIL 3, 2026



610797.H/CROSS SECTIONS SISSON.DWG
 Printed on 3-Apr-2026 10:03 AM