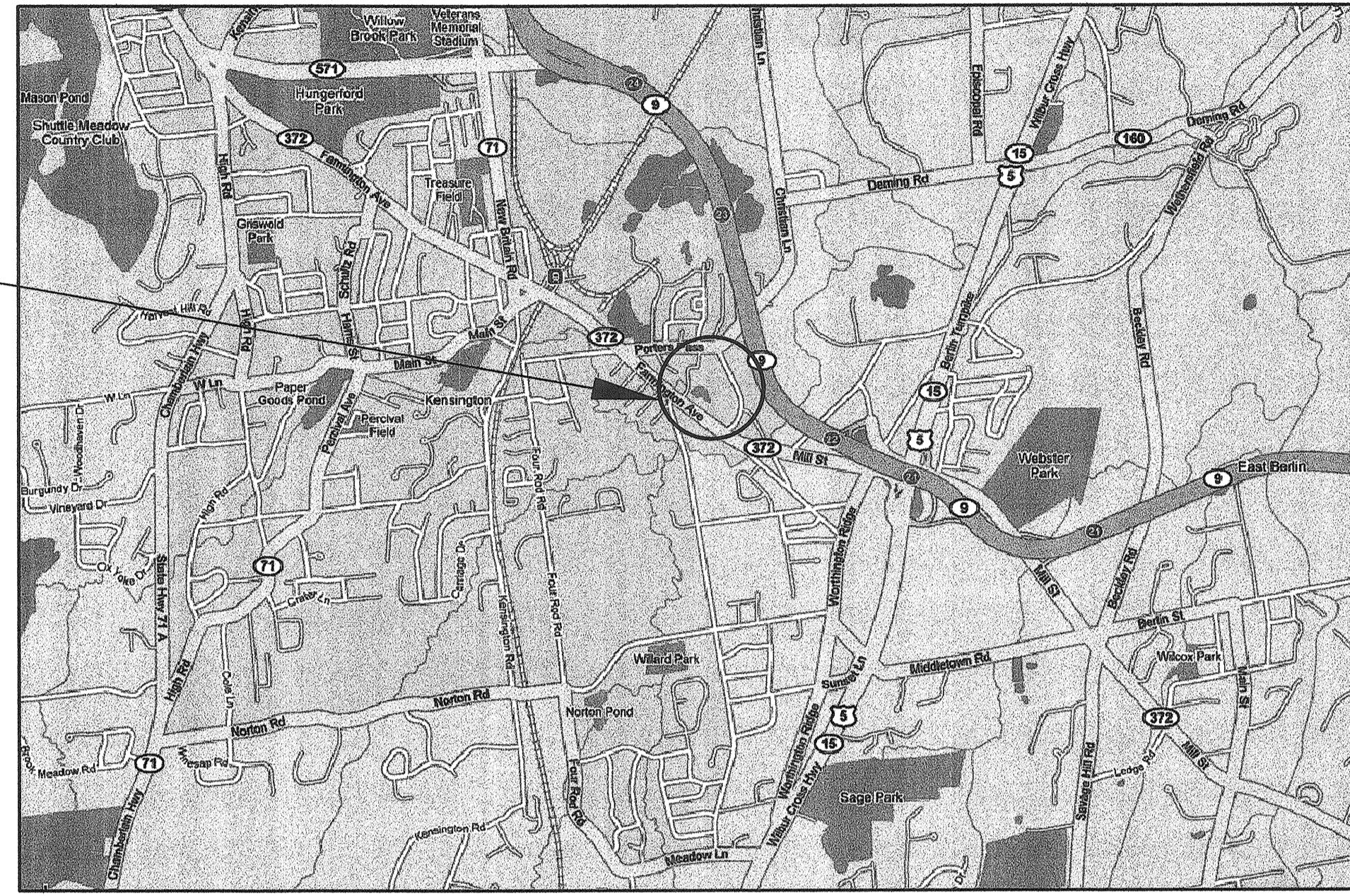


PHASE ONE
SITE DEVELOPMENT PLANS
VETERANS MEMORIAL PARK
Berlin, Connecticut

SITE LOCATION



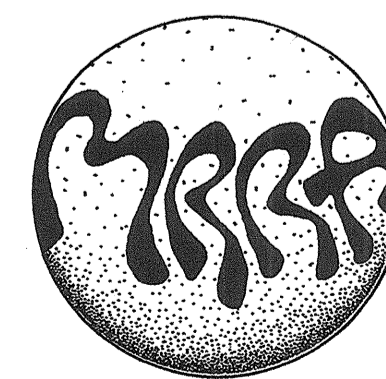
In Cooperation with
State of Connecticut
M. Jodi Rell, Governor
Department of Economic and Community Development
Joan McDonald, Commissioner
Ronald F. Angelo, Deputy Commissioner

owner:
Town of Berlin
240 Kensington Road Berlin, Connecticut

Berlin Bid Number: 2010-22

Date: MAY 14, 2010

consultants:



**M•R•ROMING
ASSOCIATES** P.C.

Landscape Architects • Land Planners
West Hartford Connecticut
860-233-1265 fax 523-0191

GIRARD & CO. ENGINEERS
Structural Engineers
10 Waterchase Drive, Rocky Hill, Connecticut 06067
(860) 563-3620 FAX: (860) 563-3600

M/E DESIGN ASSOCIATES INC.
Mech/Elec. Design Engineers
422 Highland Avenue Cheshire, Connecticut 06410
(203) 271-3787 FAX: (203) 271-2886

DATE:	REVISION

CONSULTANTS:

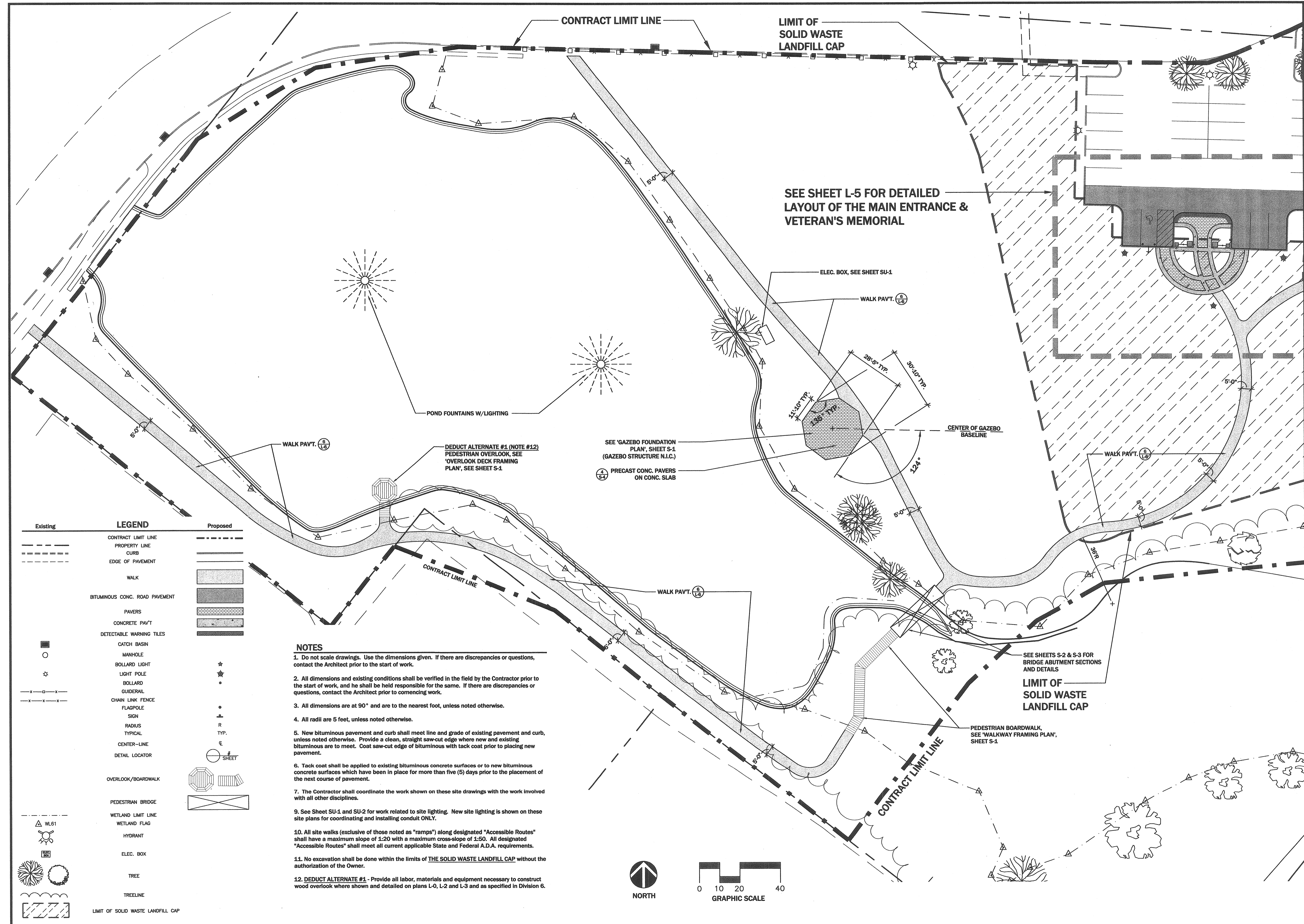
M. R. ROMING ASSOCIATES P.C.
 Landscape Architects • Land Planners
 West Hartford Connecticut
 (860) 233-1285 FAX (860) 823-0191

VETERANS MEMORIAL PARK
 BERLIN CONNECTICUT

SITE LAYOUT PLAN
 PHASE ONE

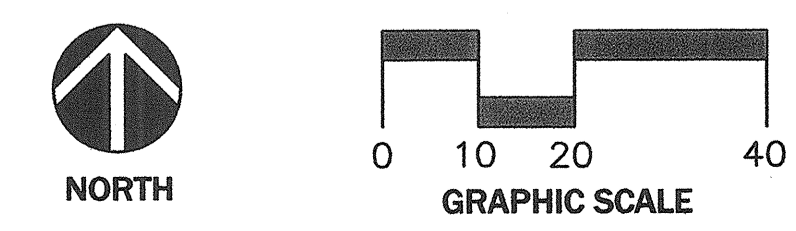
DATE: MAY 14, 2010
 SCALE: 1" = 20' - 0"
 DRAWN BY: DHH
 CHECKED BY: MRR
 SHEET NO.:

L-2



Existing	LEGEND	Proposed
---	CONTRACT LIMIT LINE	---
---	PROPERTY LINE	---
---	CURB	---
---	EDGE OF PAVEMENT	---
---	WALK	---
---	BITUMINOUS CONC. ROAD PAVEMENT	---
---	PAVERS	---
---	CONCRETE PAV'T	---
---	DETECTABLE WARNING TILES	---
○	CATCH BASIN	○
○	MANHOLE	○
☆	BOLLARD LIGHT	☆
☆	LIGHT POLE	☆
○	BOLLARD	○
---	GUIDERAIL	---
---	CHAIN LINK FENCE	---
---	FLAGPOLE	---
---	SIGN	---
---	RADIUS	---
---	TYPICAL	---
---	CENTER-LINE	---
---	DETAIL LOCATOR	---
○	OVERLOOK/BOARDWALK	○
---	PEDESTRIAN BRIDGE	---
---	WETLAND LIMIT LINE	---
---	WETLAND FLAG	---
---	HYDRANT	---
---	ELEC. BOX	---
---	TREE	---
---	TREELINE	---
---	LIMIT OF SOLID WASTE LANDFILL CAP	---

- NOTES**
1. Do not scale drawings. Use the dimensions given. If there are discrepancies or questions, contact the Architect prior to the start of work.
 2. All dimensions and existing conditions shall be verified in the field by the Contractor prior to the start of work, and he shall be held responsible for the same. If there are discrepancies or questions, contact the Architect prior to commencing work.
 3. All dimensions are at 90° and are to the nearest foot, unless noted otherwise.
 4. All radii are 5 feet, unless noted otherwise.
 5. New bituminous pavement and curb shall meet line and grade of existing pavement and curb, unless noted otherwise. Provide a clean, straight saw-cut edge where new and existing bituminous are to meet. Coat saw-cut edge of bituminous with tack coat prior to placing new pavement.
 6. Tack coat shall be applied to existing bituminous concrete surfaces or to new bituminous concrete surfaces which have been in place for more than five (5) days prior to the placement of the next course of pavement.
 7. The Contractor shall coordinate the work shown on these site drawings with the work involved with all other disciplines.
 9. See Sheet SU-1 and SU-2 for work related to site lighting. New site lighting is shown on these site plans for coordinating and installing conduit ONLY.
 10. All site walks (exclusive of those noted as "ramps") along designated "Accessible Routes" shall have a maximum slope of 1:20 with a maximum cross-slope of 1:50. All designated "Accessible Routes" shall meet all current applicable State and Federal A.D.A. requirements.
 11. No excavation shall be done within the limits of THE SOLID WASTE LANDFILL CAP without the authorization of the Owner.
 12. **DEDUCT ALTERNATE #1** - Provide all labor, materials and equipment necessary to construct wood overlook where shown and detailed on plans L-0, L-2 and L-3 and as specified in Division 6.



DATE:	REVISION:

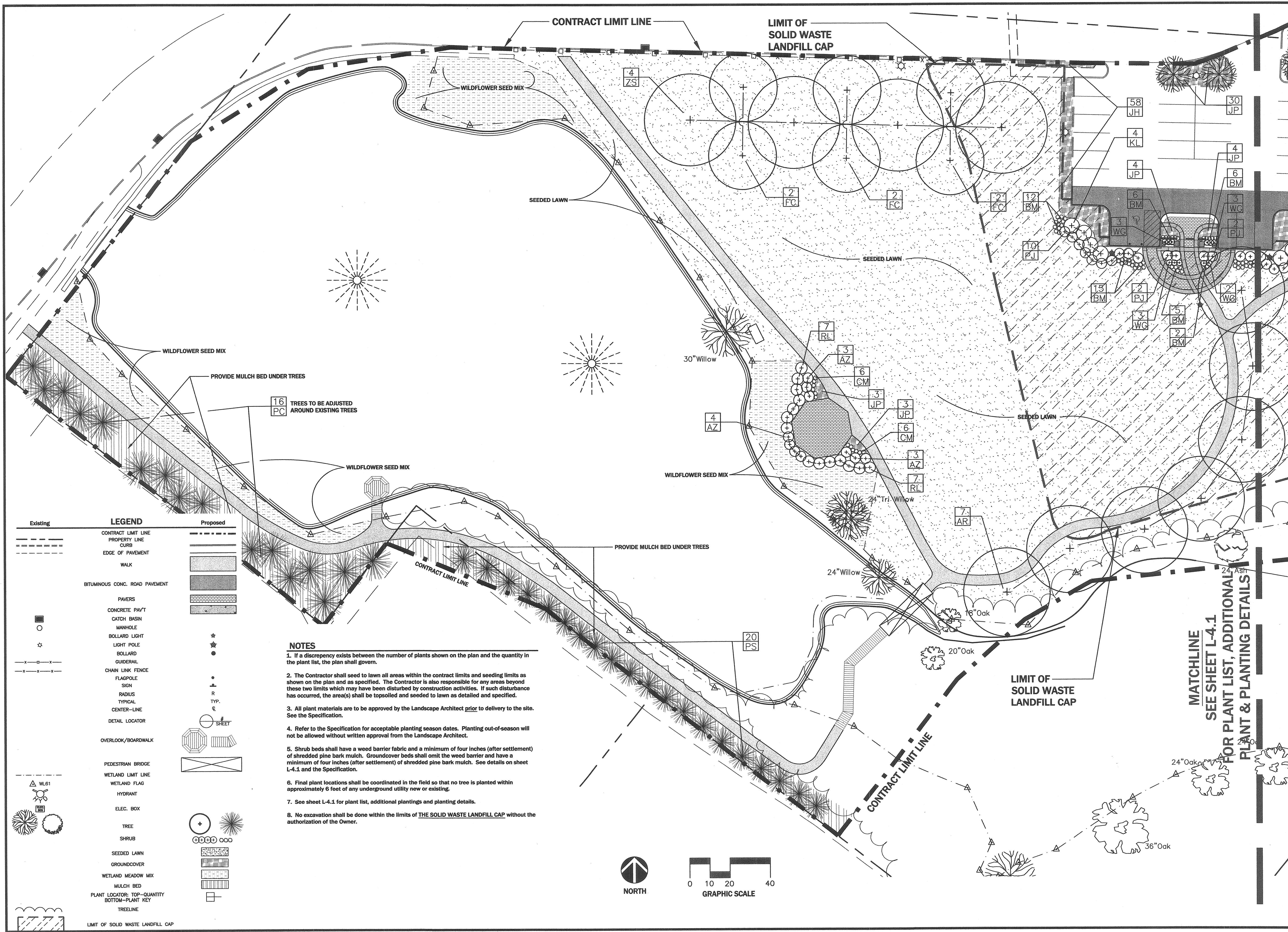
CONSULTANTS:

M. R. ROMING ASSOCIATES P.C.
 Landscape Architects • Land Planners
 West Hartford Connecticut
 (860) 233-1265 FAX (860) 523-0191

SITE PLANTING PLAN
 PHASE ONE
VETERANS MEMORIAL PARK
 BERLIN CONNECTICUT

DATE: MAY 14, 2010
 SCALE: 1" = 20' - 0"
 DRAWN BY: DHH
 CHECKED BY: MRR
 SHEET NO.:

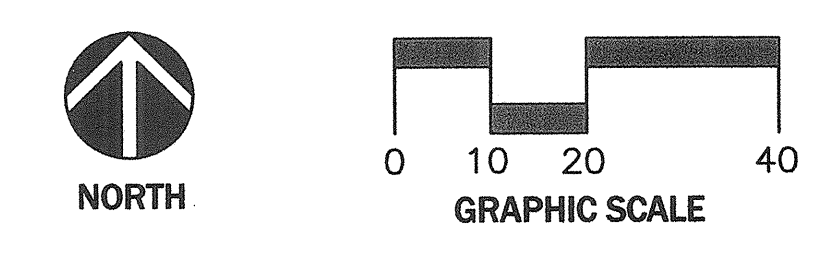
L-4



LEGEND

Existing	Proposed
--- CONTRACT LIMIT LINE	--- CONTRACT LIMIT LINE
--- PROPERTY LINE	--- PROPERTY LINE
--- CURB	--- CURB
--- EDGE OF PAVEMENT	--- EDGE OF PAVEMENT
--- WALK	--- WALK
--- BITUMINOUS CONC. ROAD PAVEMENT	--- BITUMINOUS CONC. ROAD PAVEMENT
--- PAVERS	--- PAVERS
--- CONCRETE PAV'T	--- CONCRETE PAV'T
--- CATCH BASIN	--- CATCH BASIN
--- MANHOLE	--- MANHOLE
--- BOLLARD LIGHT	--- BOLLARD LIGHT
--- LIGHT POLE	--- LIGHT POLE
--- BOLLARD	--- BOLLARD
--- GUIDERAIL	--- GUIDERAIL
--- CHAIN LINK FENCE	--- CHAIN LINK FENCE
--- FLAGPOLE	--- FLAGPOLE
--- SIGN	--- SIGN
--- RADIUS	--- RADIUS
--- TYPICAL	--- TYPICAL
--- CENTER-LINE	--- CENTER-LINE
--- DETAIL LOCATOR	--- DETAIL LOCATOR
--- OVERLOOK/BOARDWALK	--- OVERLOOK/BOARDWALK
--- PEDESTRIAN BRIDGE	--- PEDESTRIAN BRIDGE
--- WETLAND LIMIT LINE	--- WETLAND LIMIT LINE
--- WETLAND FLAG	--- WETLAND FLAG
--- HYDRANT	--- HYDRANT
--- ELEC. BOX	--- ELEC. BOX
--- TREE	--- TREE
--- SHRUB	--- SHRUB
--- SEEDED LAWN	--- SEEDED LAWN
--- GROUNDCOVER	--- GROUNDCOVER
--- WETLAND MEADOW MIX	--- WETLAND MEADOW MIX
--- MULCH BED	--- MULCH BED
--- PLANT LOCATOR: TOP-QUANTITY	--- PLANT LOCATOR: TOP-QUANTITY
--- BOTTOM-PLANT KEY	--- BOTTOM-PLANT KEY
--- TREELINE	--- TREELINE

- NOTES**
1. If a discrepancy exists between the number of plants shown on the plan and the quantity in the plant list, the plan shall govern.
 2. The Contractor shall seed to lawn all areas within the contract limits and seeding limits as shown on the plan and as specified. The Contractor is also responsible for any areas beyond these two limits which may have been disturbed by construction activities. If such disturbance has occurred, the area(s) shall be topsoiled and seeded to lawn as detailed and specified.
 3. All plant materials are to be approved by the Landscape Architect prior to delivery to the site. See the Specification.
 4. Refer to the Specification for acceptable planting season dates. Planting out-of-season will not be allowed without written approval from the Landscape Architect.
 5. Shrub beds shall have a weed barrier fabric and a minimum of four inches (after settlement) of shredded pine bark mulch. Groundcover beds shall omit the weed barrier and have a minimum of four inches (after settlement) of shredded pine bark mulch. See details on sheet L-4.1 and the Specification.
 6. Final plant locations shall be coordinated in the field so that no tree is planted within approximately 6 feet of any underground utility new or existing.
 7. See sheet L-4.1 for plant list, additional plantings and planting details.
 8. No excavation shall be done within the limits of THE SOLID WASTE LANDFILL CAP without the authorization of the Owner.



MATCHLINE
 SEE SHEET L-4.1
 FOR PLANT LIST, ADDITIONAL
 PLANT & PLANTING DETAILS

DATE:	REVISION

GIRARD AND COMPANY LLP
 STRUCTURAL ENGINEERS
 10 WATERCHASE DRIVE
 ROCKY HILL, CONNECTICUT
 T. (860) 563-3820 F. (860) 563-3860
 WWW.GIRARDCO.COM

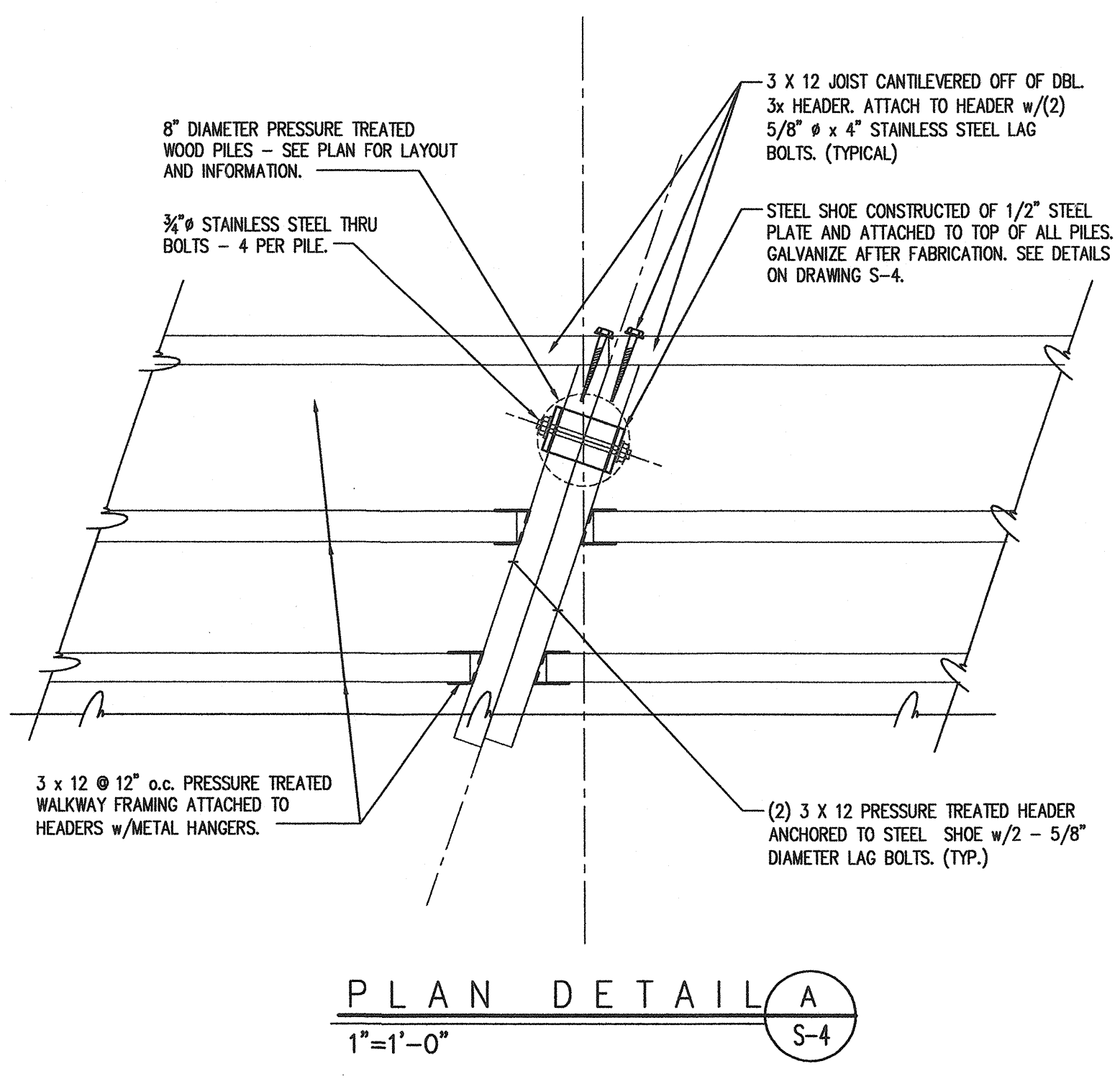
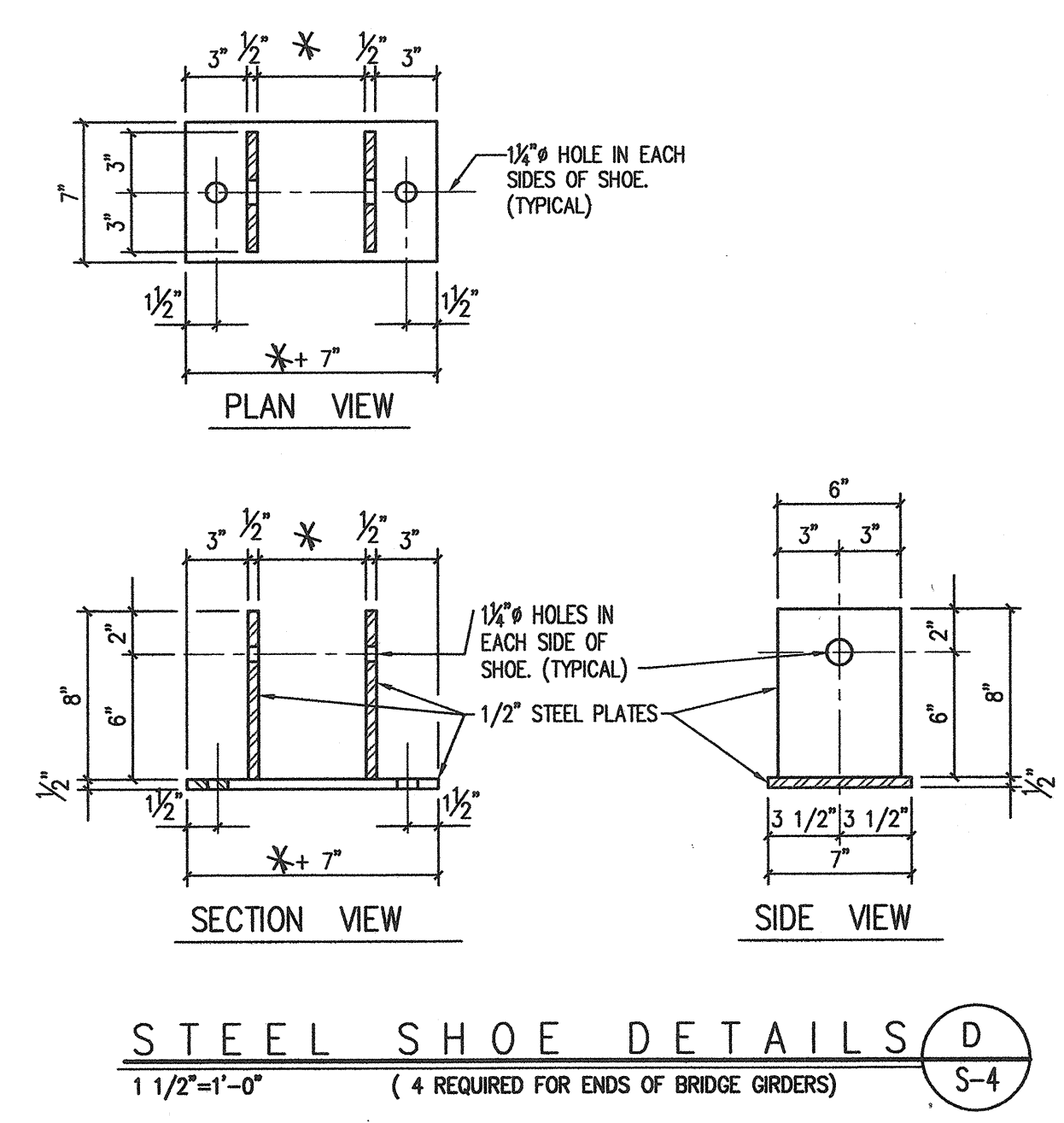
CONSULTANTS:

M. R. ROMING ASSOCIATES P.C.
 Landscape Architects • Land Planners
 West Hartford Connecticut
 (860) 233-1265
 FAX: (860) 523-0191

RAISED WALKWAY SECTIONS AND DETAILS
 PHASE ONE
VETERANS MEMORIAL PARK
 BERLIN CONNECTICUT

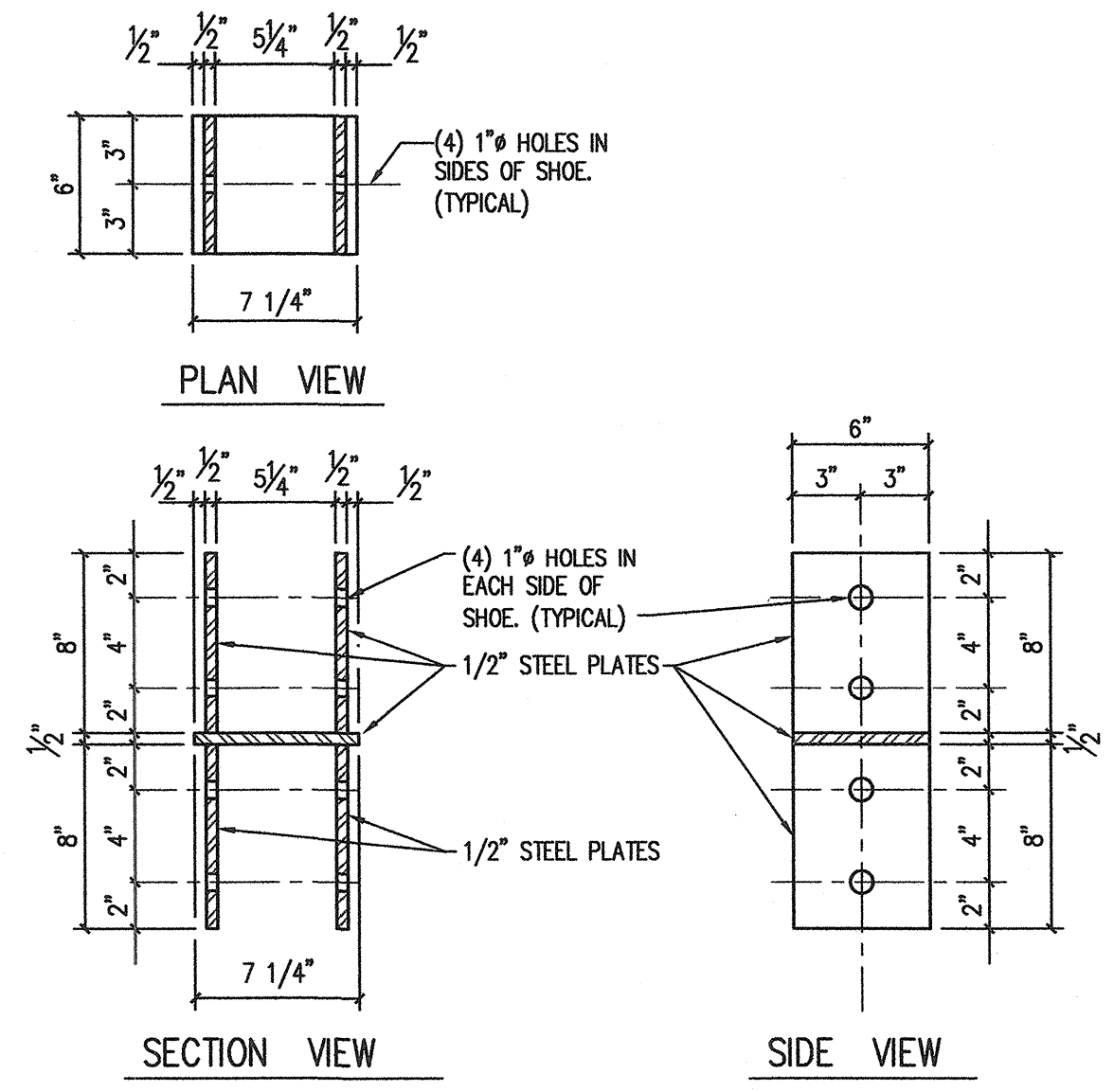
DATE:	MAY 14, 2010
SCALE:	3/4" = 1'-0"
DRAWN BY:	DSG
CHECKED BY:	DSG
SHEET NO.:	

S-4



DESIGN DATA							
CODES USED	STRESSES USED						
2003 I.B.C. CODE WITH 2005 CONNECTICUT SUPPLEMENT	SOIL BEARING CAPACITY- 5,000 p.s.f.	FRAMING LUMBER - DOUGLAS FIR, No. 1 OR BETTER.					
A.I.T.C. 4th ED. TIMBER CONSTR. MANUAL A.C.I., 318-02	CONCRETE - FOUNDATION FOOTINGS & SLAB-ON-GRADE f _c =4,000 p.s.i.	REPEATITIVE USE SINGLE MEMBER F _t =1,450 p.s.i. F _c =1,150 p.s.i.					
SEI/ASCE 7-02	REINFORCING STEEL- A.S.T.M. GR. 60	HEAVY TIMBER FRAMING - DOUGLAS FIR, No. 1 OR BETTER F _t =1,350 p.s.i.					
A.C.I. 530.1/ASCE 6-02		ROUND TIMBER PILES PACIFIC COAST DOUGLAS FIR, ALLOW COMP. STR. F _c =1,250 p.s.i.					
STEEL DECK INSTITUTE REQUIREMENTS							
LOAD (PSF)	LIVE LOAD	WOOD DECKING	RAILING	CEILING	FRAMING	MISC.	DEAD
WALKWAY & OVERLOOK DECK	150	3	10 ¹	--	7	5	15
PRE-ENGINEERED BRIDGE	150	4	10	--	16	5	35
							185

1. RAILING WEIGHT TO BE INCLUDED AT THE OVERLOOK DECK FRAMING ONLY. NO RAILINGS ARE TO BE INSTALLED AT THE RAISED WALKWAY CONNECTED TO THE BRIDGE.



DESIGN PARAMETERS - SNOW, WIND, AND SEISMIC - BERLIN, CT		
S N O W		
GROUND SNOW LOAD	- APPENDIX "K" (CT. SUPPL.)	P _g = 30 p.s.f.
FLAT-ROOF SNOW LOAD	- SECTION 1608.1	P _f = 26.0 p.s.f., USE 30 p.s.f.
SNOW EXPOSURE FACTOR	- SECTION 1608.3.1	C _e = 0.9
THERMAL FACTOR	- SECTION 1608.3.2	C _t = 1.2
SNOW LOAD IMPORTANCE FACTOR	- SECTION 1608.3.3	I _s = 0.8
W I N D		
BASIC WIND SPEED	- APPENDIX "K" (CT. SUPPL.)	105 M.P.H.
WIND EXPOSURE	- SECTION 1609.4	C
BUILDING CATEGORY	- TABLE 1604.5	CATEGORY II
WIND IMPORTANCE FACTOR	- TABLE 1604.5	I _w = 0.87
INTERNAL PRESSURE COEFFICIENT	- ASCE 7-02 - FIGURE 6-5	NOT APPLICABLE
ANALYSIS PROCEDURE UTILIZED	- ASCE 7-02 - SECTION 6.4	METHOD - 1
S E I S M I C		
SEISMIC USE GROUP	- TABLE 1604.5	SUG-1
SEISMIC IMPORTANCE FACTOR	- TABLE 1604.5	I _e = 1.0
MAPPED SPECTRAL RESPONSE ACCELERATION	- APPENDIX "K" (CT. SUPPL.)	S _{0.2} = 0.281 S ₁ = 0.085
SITE CLASS	- TABLE 1615.1.1	D
SPECTRAL RESPONSE COEFFICIENTS	- SECTION 1615.1.3	S _{0.2} = 0.300 S _{0.1} = 0.1360
SEISMIC DESIGN CATEGORY	- TABLE 1616.3(1)	CATEGORY 'C'
BASIC SEISMIC-FORCE RESISTING SYSTEM	- TABLE 1617.6.2	EMBEDDED POLE FRAMING SYSTEM
SEISMIC RESPONSE COEFFICIENT	- SECTION 1617.5.1	C _s = 0.1320
RESPONSE MODIFICATION FACTOR	- TABLE 1617.6.2	R = 1
ANALYSIS PROCEDURE UTILIZED	- SECTION 1617.5	SIMPLIFIED ANALYSIS PROCEDURE

