

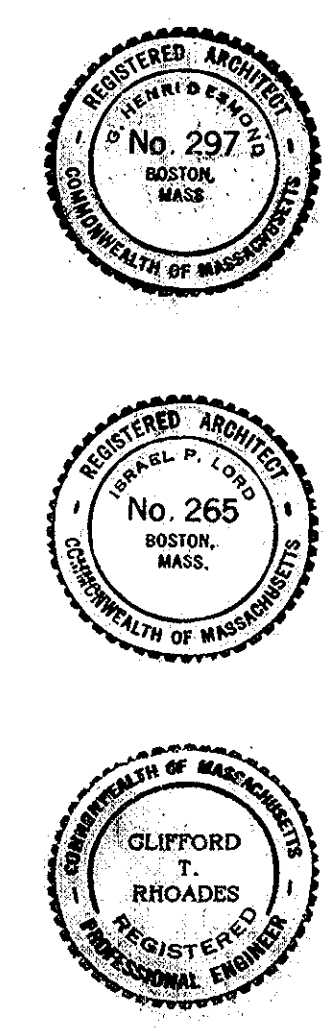
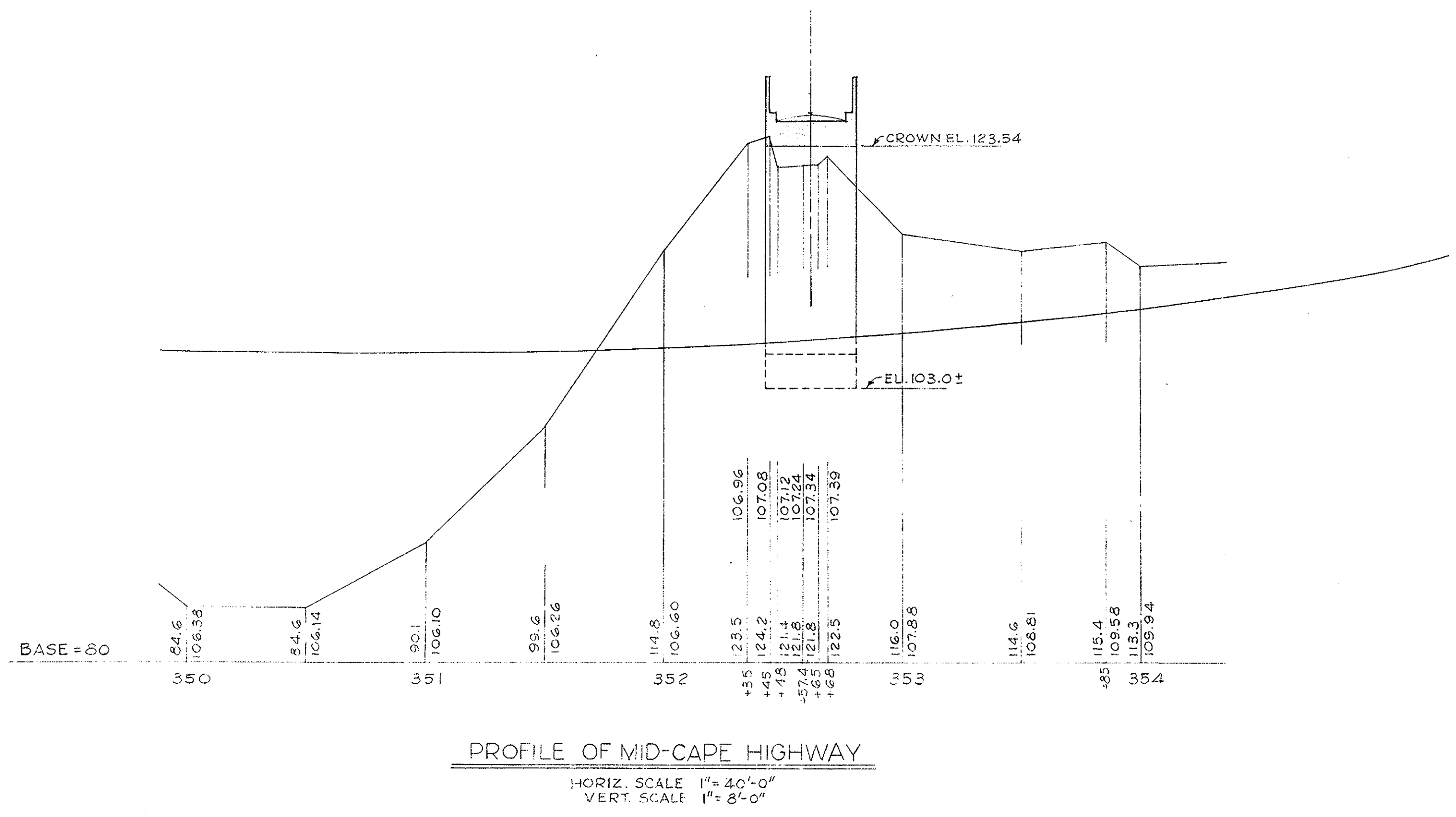
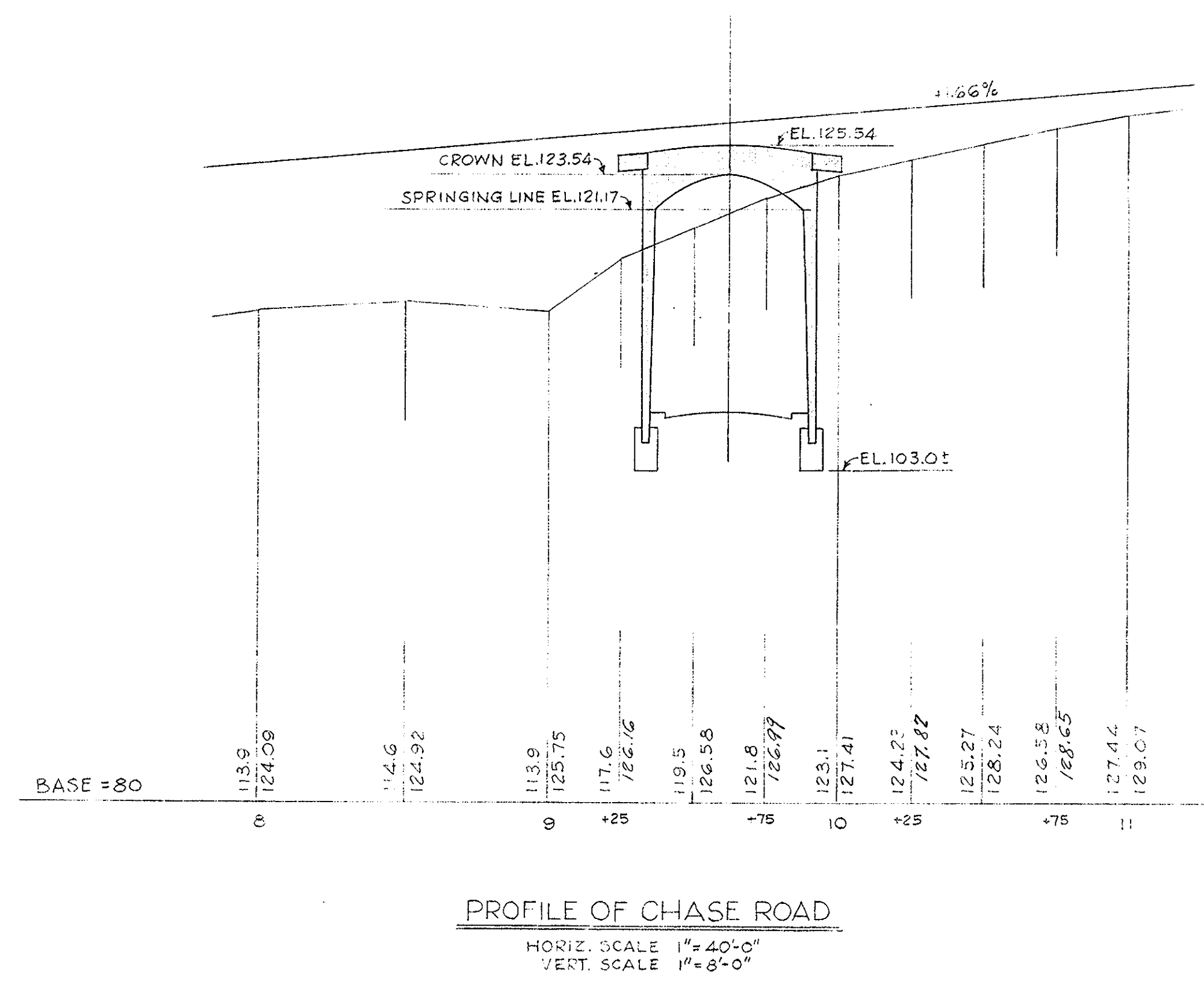
BORING NOTES: LOCATION OF BORINGS SHOWN ON KEY PLAN THUS BORINGS TAKEN FOR PURPOSES OF DESIGN, AND INDICATE CONDITIONS AT BORING POINTS ONLY. BUT DO NOT NECESSARILY SHOW NATURE OF MATERIAL TO BE ENCOUNTERED IN CONNECTION WITH THE CONSTRUCTION OF THE BRIDGE. FIGURES IN COLUMNS INDICATE BLOWS PER FOOT ON 140# PIPE PRODUCED BY 30" FALL OF 140# HAMMER. SAMPLES FROM BORINGS ARE AVAILABLE, AND MAY BE SEEN AT THE OFFICE OF THE BRIDGE ENGINEER, ROOM 609.

ESTIMATED QUANTITIES
NOT GUARANTEED

| | |
|---|--------------|
| CLASS "B" ROCK EXCAVATION | 10 CU. YDS. |
| BRIDGE EXCAVATION | 570 CU. YDS. |
| GRAVEL BORROW | 780 CU. YDS. |
| CLASS "A" CEMENT CONCRETE MASONRY | 453 CU. YDS. |
| CLASS "B" CEMENT CONCRETE MASONRY | 592 CU. YDS. |
| CLASS "C" CEMENT CONCRETE MASONRY | 59 CU. YDS. |
| STEEL REINFORCING FOR STRUCTURES | 74000 POUNDS |
| MEMBRANE WATERPROOFING | 298 SQ. YDS. |
| WATERPROOFING PROTECTIVE COURSE | 247 SQ. YDS. |
| SIMULTANEOUS DAMPROOFING | 131 SQ. YDS. |
| HORIZONTAL SAWED FACE GRANITE (4") | 586 SQ. FT. |
| DRESSED GRANITE MASONRY END POSTS - HORIZ. SAWED CUT | 4 EACH |
| GRANITE SIDEWALK - HORIZ. SAWED CUT (2'-0" x 2'-0" x 1'-4") | 4 EACH |
| GRANITE COPING - 2 POINT CUT (7'18") | 293 LIN. FT. |
| GRANITE CURB TYPE "A" (6"x12") STR. | 125 LIN. FT. |
| STRIPPING GRAVEL PITS | 80 CU. YDS. |

GENERAL NOTES

- FOUNDATIONS:
MAY BE ALTERED IF NECESSARY TO SUIT CONDITIONS OF CONSTRUCTION.
- DESIGN:
ACCORDING TO STANDARD SPECIFICATIONS OF THE AMERICAN ASSOCIATION OF STATE HIGHWAY OFFICIALS; 1949 EDITION FOR H-20 LOADING.
- BENCH MARK:
SPIKE IN 16" PINE STA. 352+40 135' LEFT. ELEVATION 115.735 U.S.C. & G.S. MEAN SEA LEVEL.
- DATE & SEAL:
TO BE LOCATED ON ROADWAY FACE OF NORTHWESTERLY AND SOUTHEASTERLY END POSTS OF RAILING, FOR DETAILS SEE SHEET N#2. FOR SIZE AND CHARACTER OF NUMERALS SEE ANOTHER SHEET.



DATE SHEET NOS. DESCRIPTION

LIST OF REVISIONS - USE ONLY PRINTS OF LATEST DATE

THE COMMONWEALTH OF MASSACHUSETTS
PROPOSED BRIDGE
SANDWICH
MID-CAPE HIGHWAY STA. 352+60.13
UNDER CHASE RD.
SCALES AS NOTED

OFFICE OF
DEPARTMENT OF PUBLIC WORKS
100 NASHUA ST. BOSTON, MASS.
NOVEMBER 1949

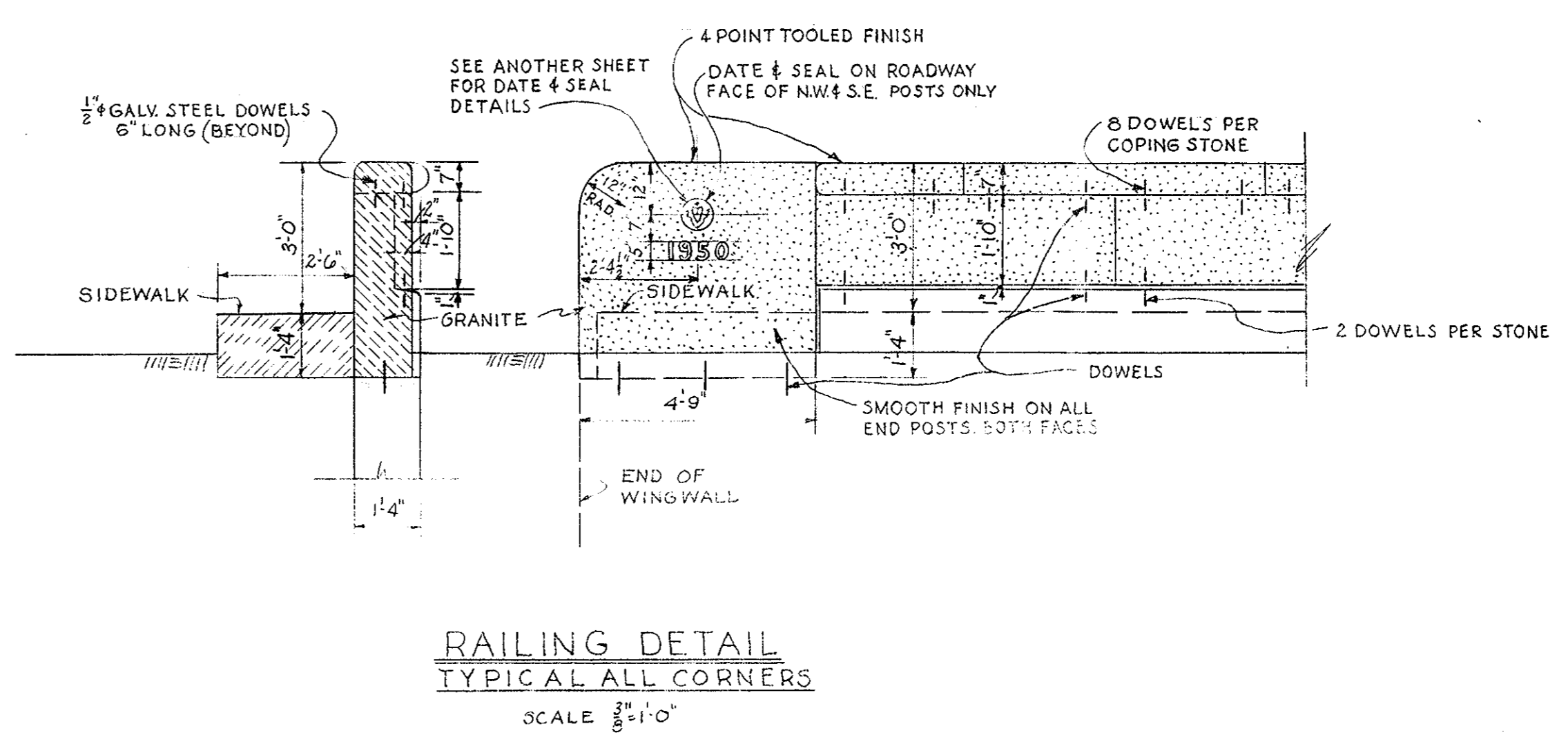
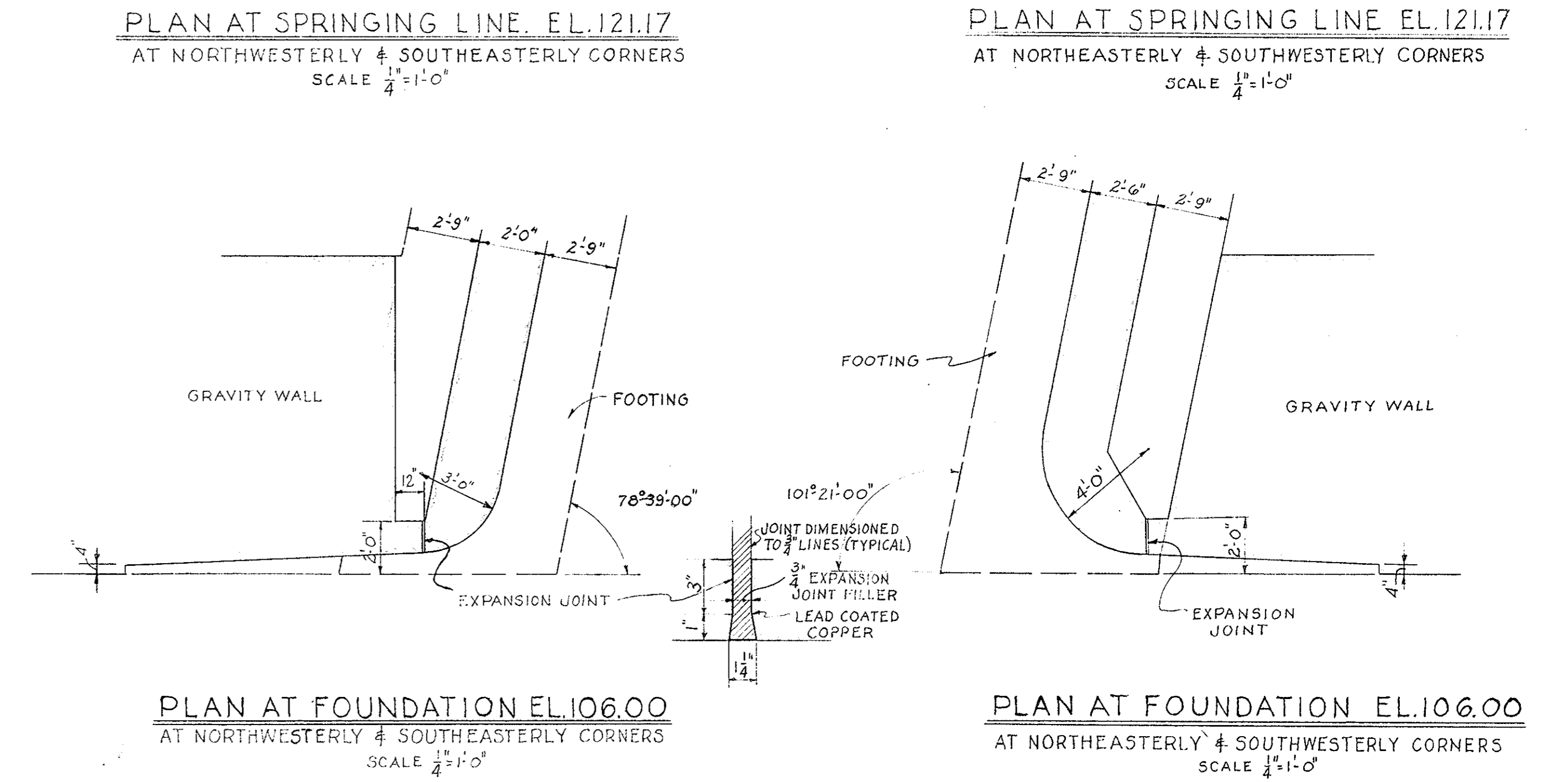
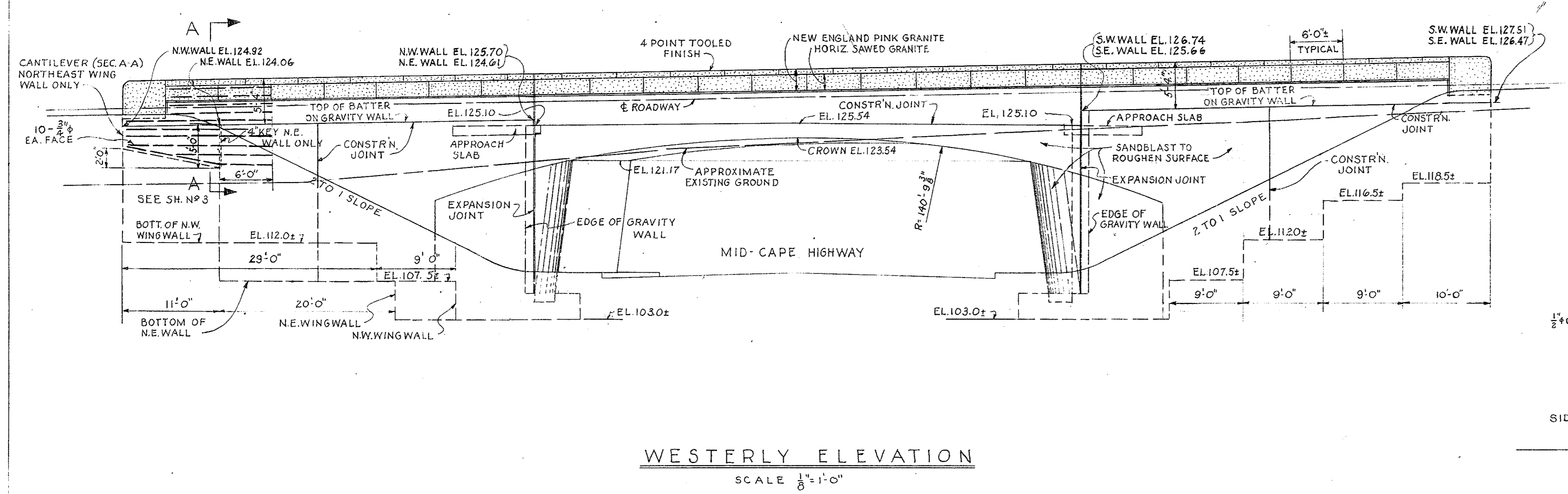
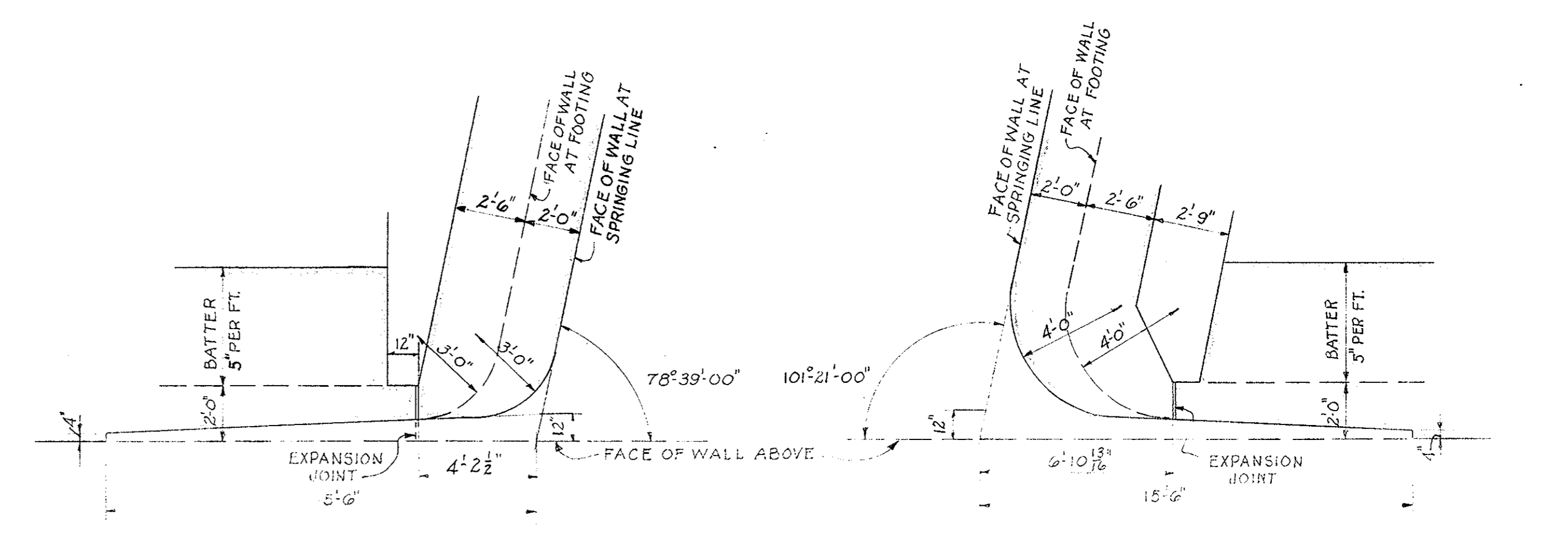
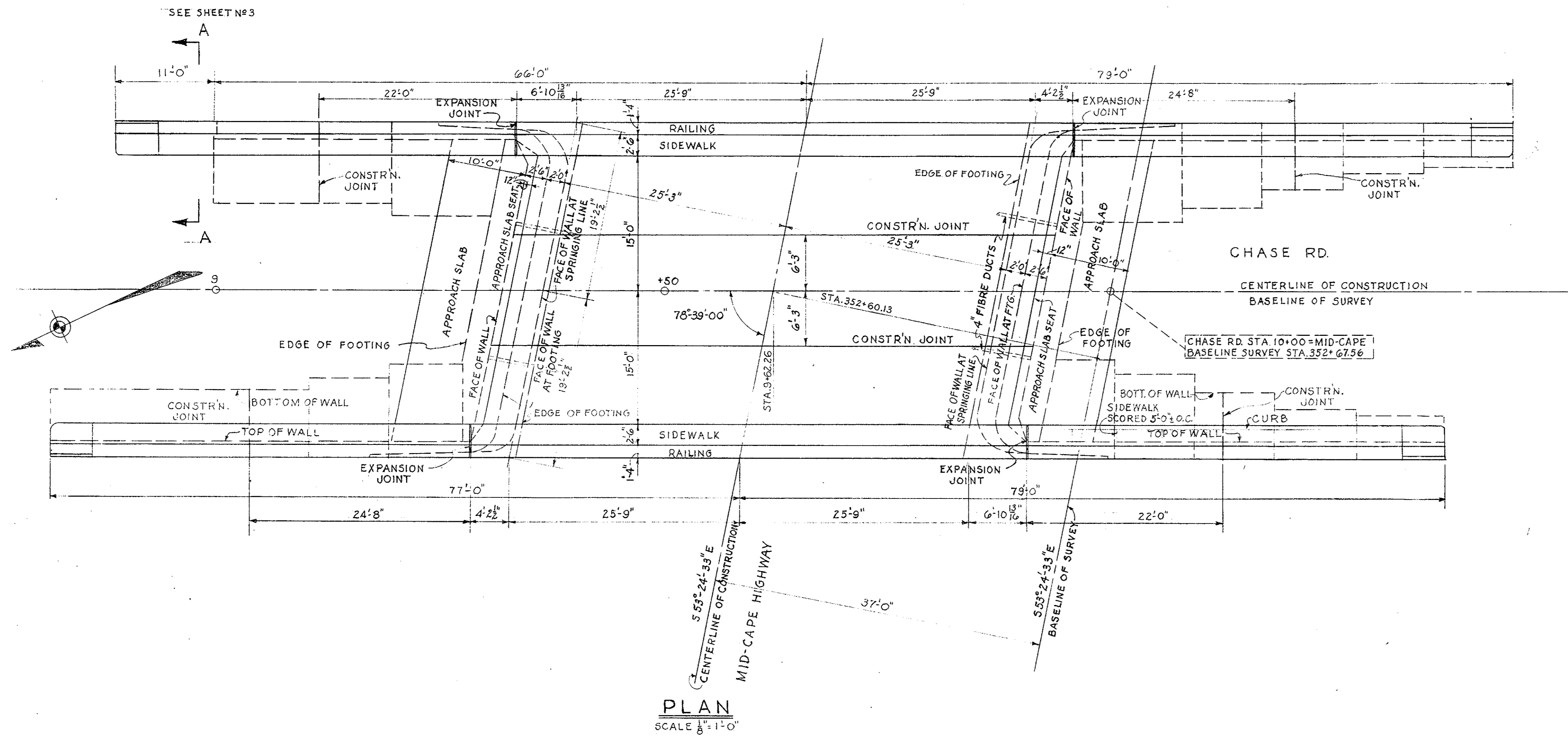
R.O. Hofford BRIDGE ENGINEER
Clifford T. Roades REGISTERED PROFESSIONAL ENGINEER

DESMOND & LORD, ARCHITECTS & ENGINEERS

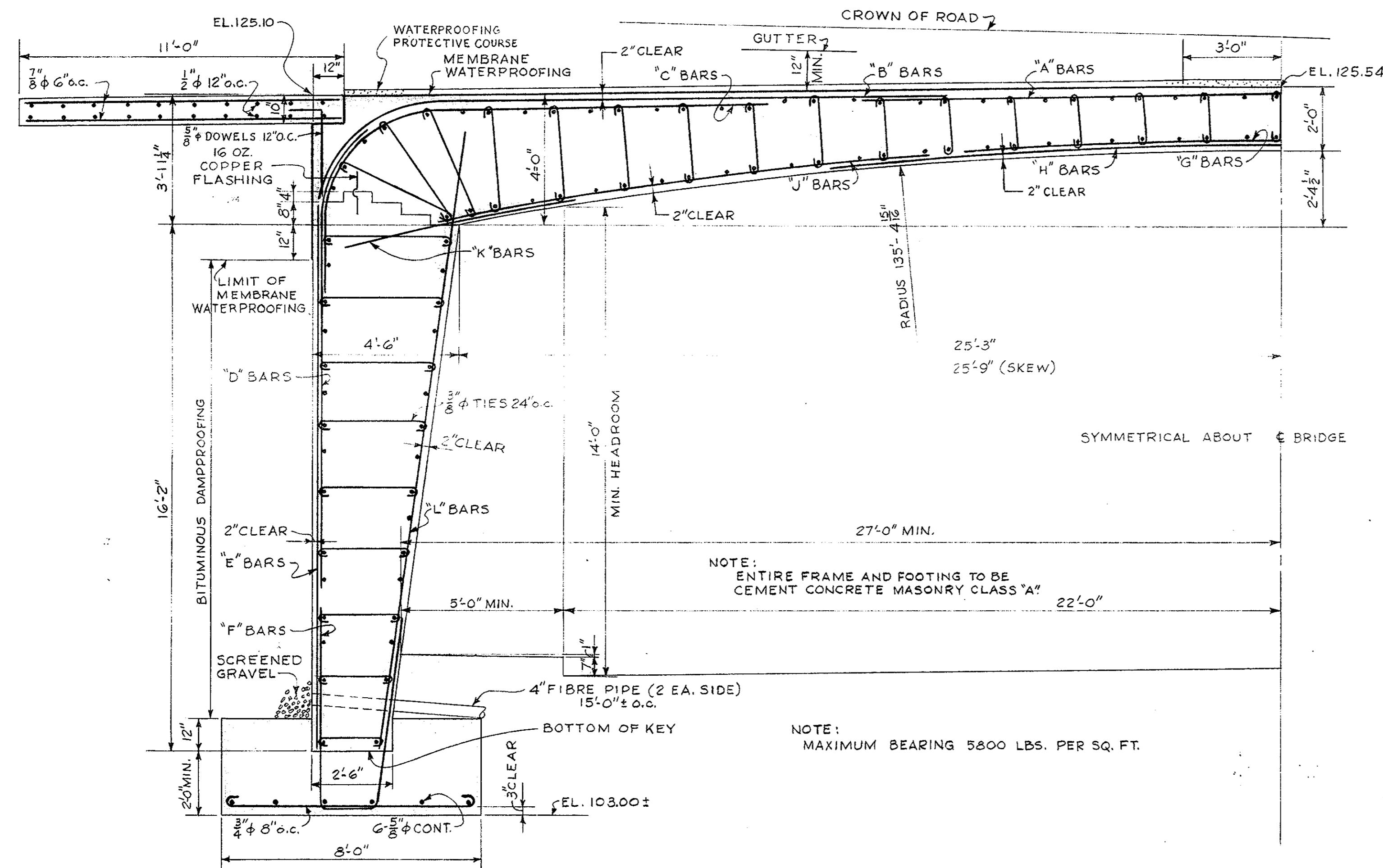
DATE OF ISSUE
ADVISING CONSTRUCTION REVISION

11-26-49 11-26-49

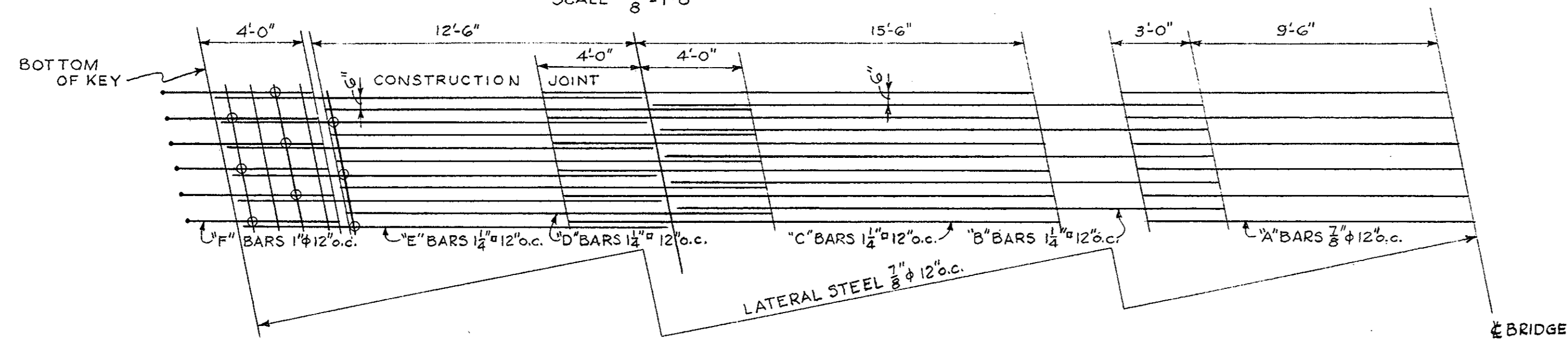
SHEET 1 OF 3 SHEETS BRIDGE N# S-4-8



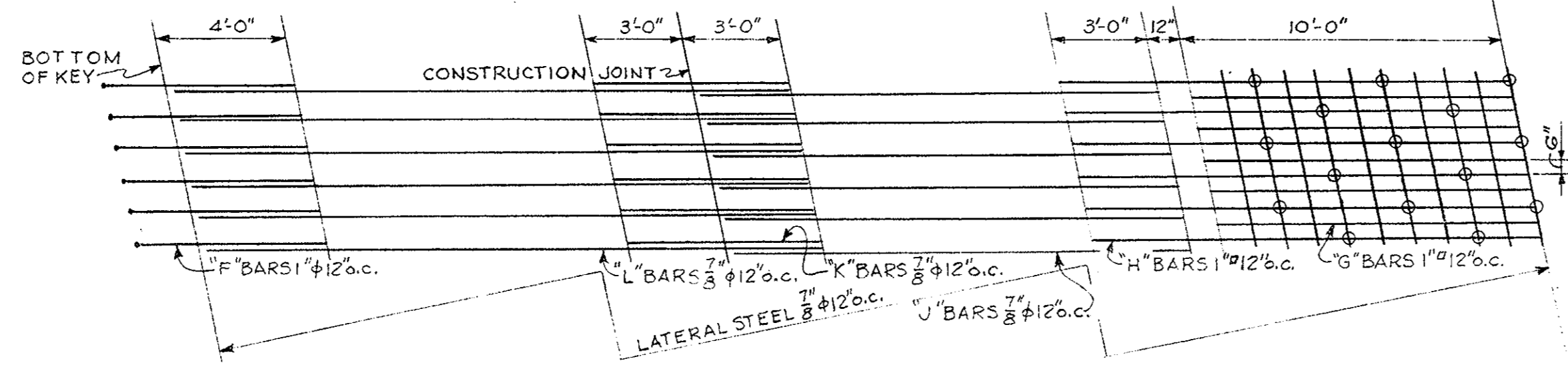
| | |
|--------------------------------|--------------|
| 11-26-49 | CONSTRUCTION |
| 11-26-49 | ADVERTISING |
| DATE | DESCRIPTION |
| USE ONLY PRINTS OF LATEST DATE | |



SQUARE HALF SECTION
SCALE 3/8" = 1'-0"

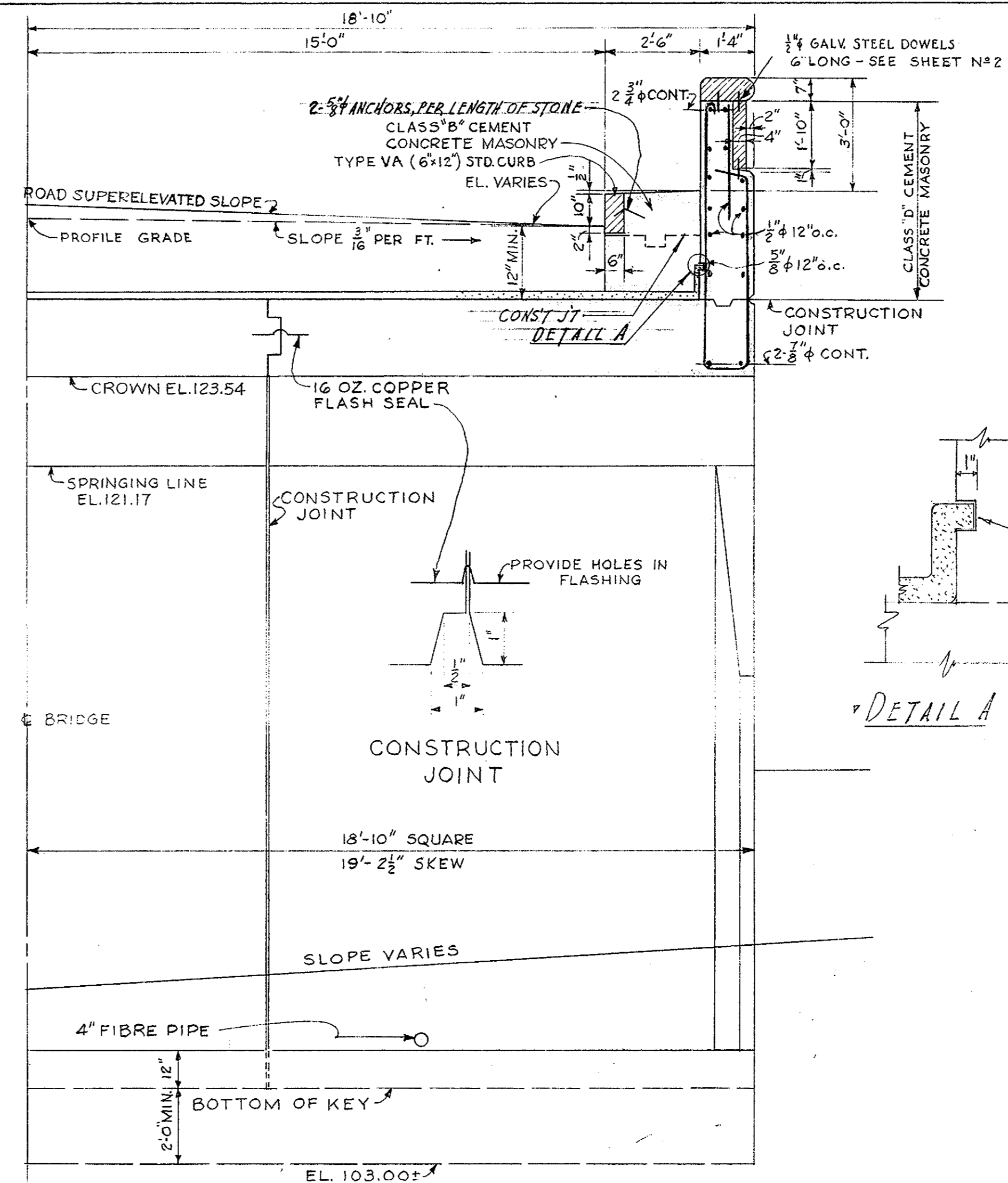


EXTRADOS

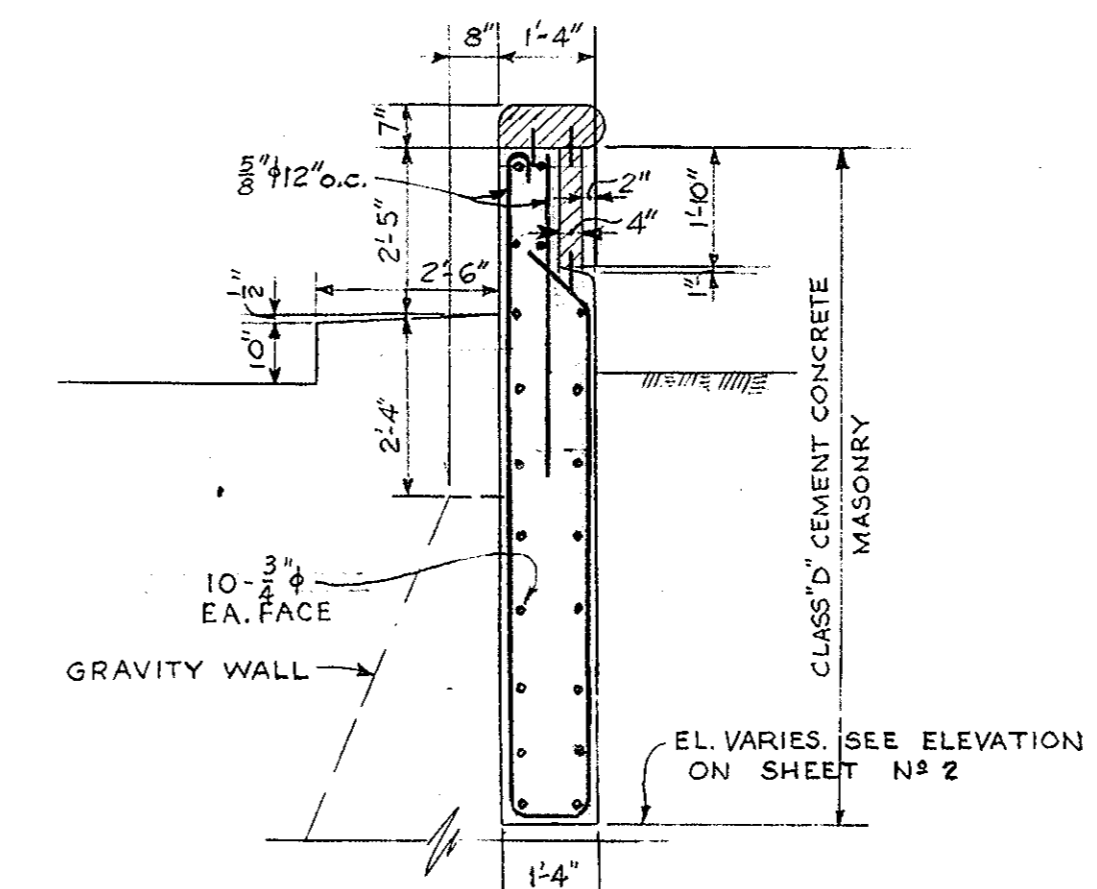


INTRADOS

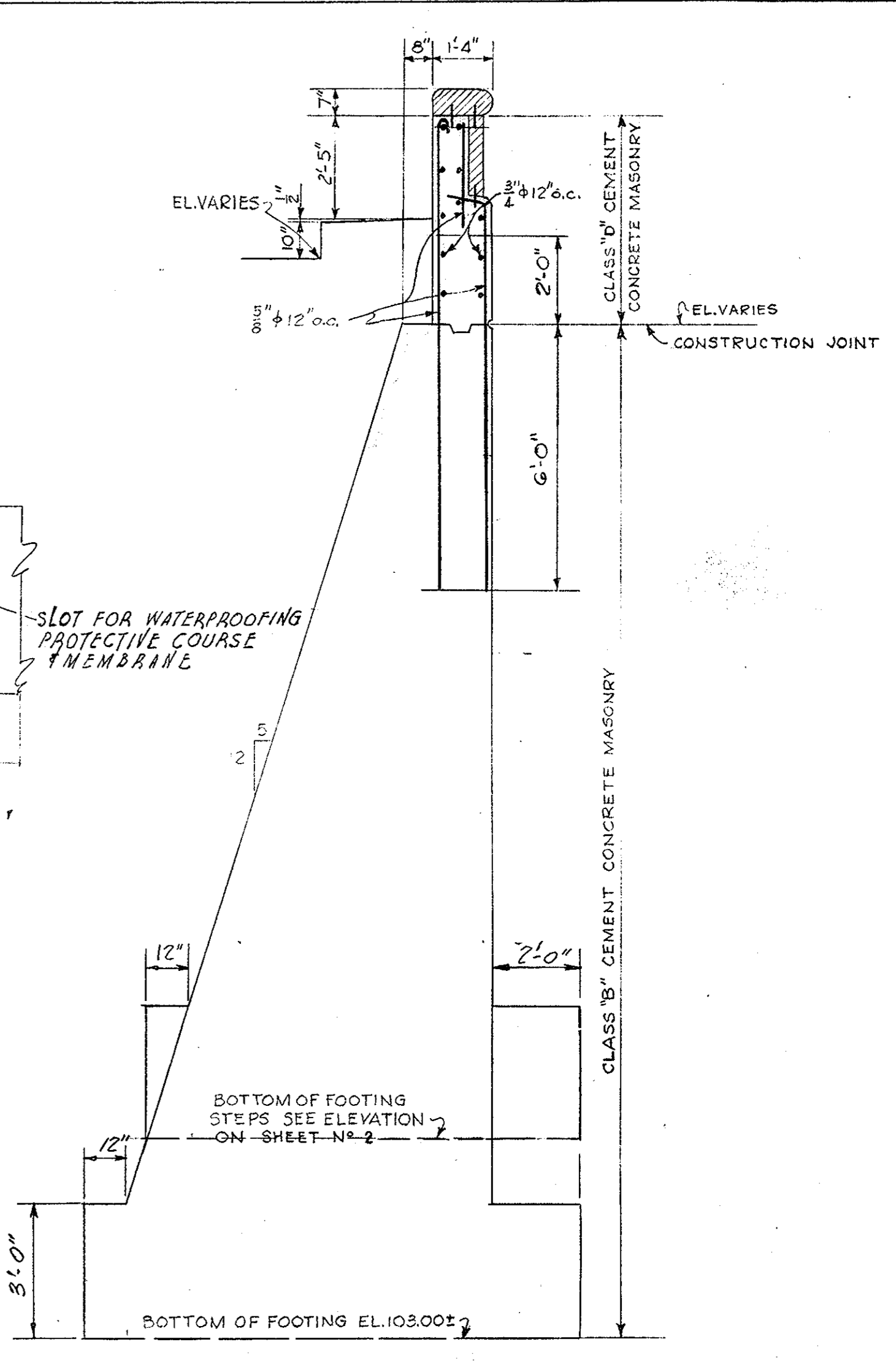
REINFORCEMENT DIAGRAM
(HALF SPAN DEVELOPED)
SCALE 1/4" = 1'-0"



HALF CROSS SECTION
SCALE 3/8" = 1'-0"

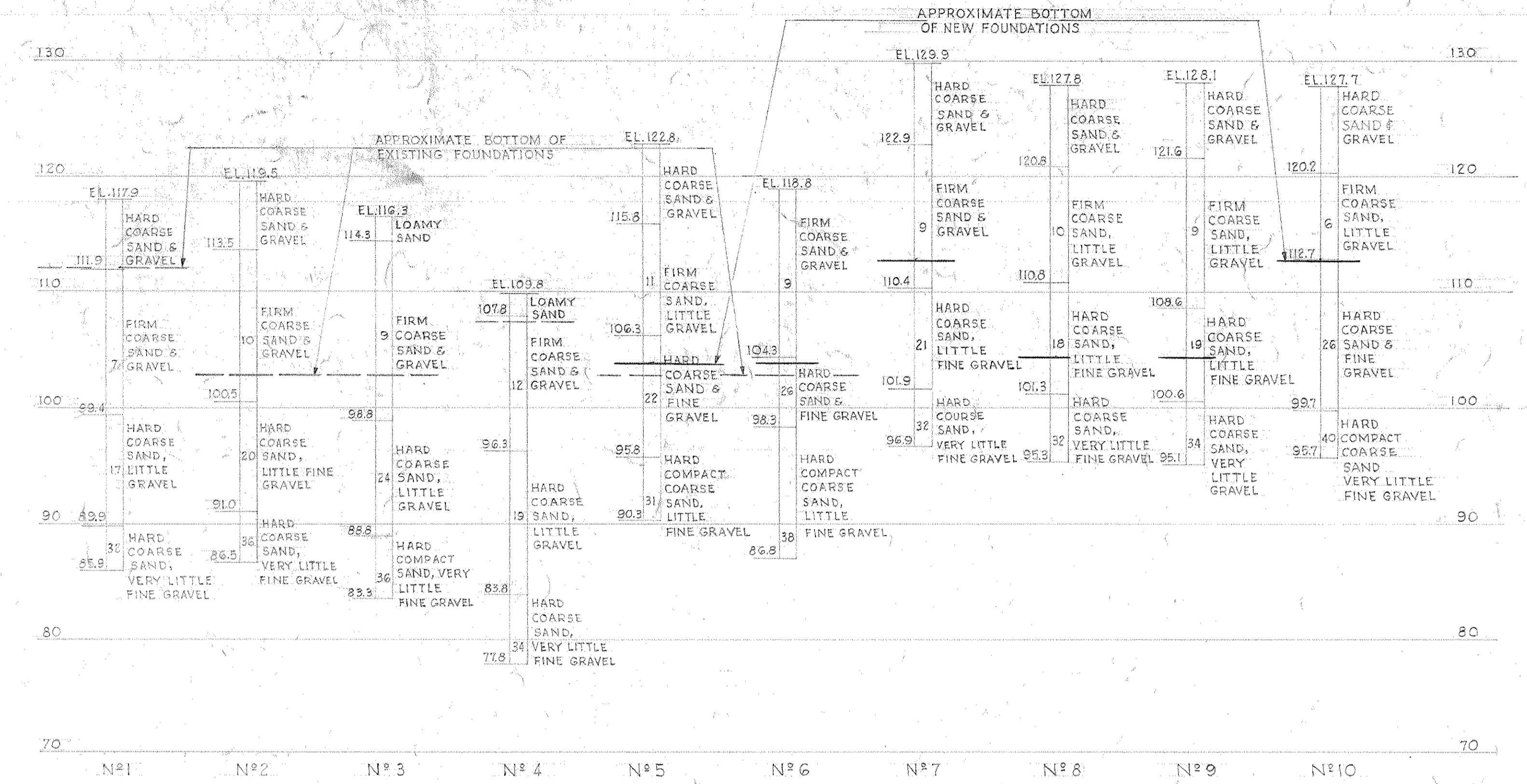
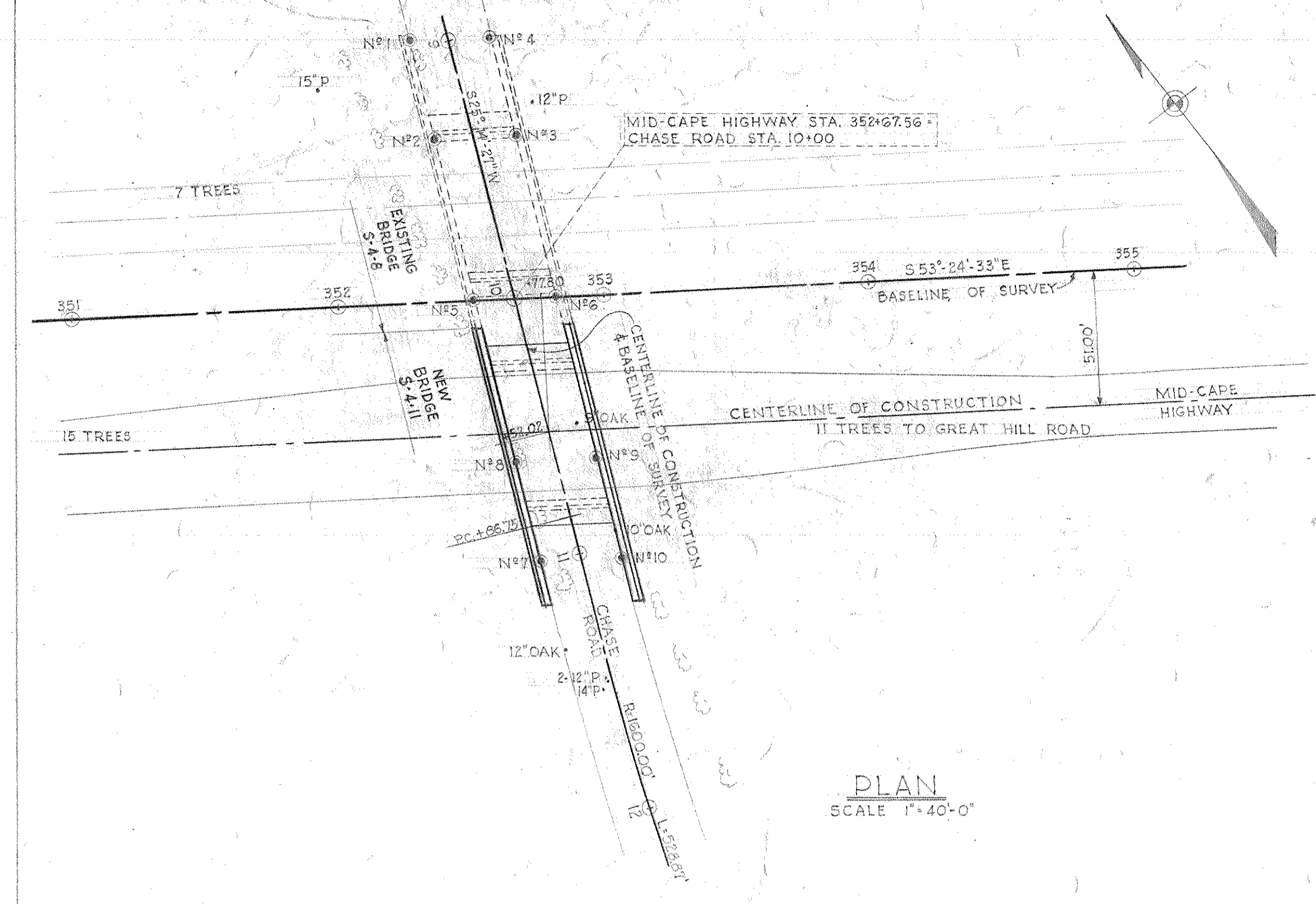


SECTION A-A
SCALE 3/8" = 1'-0"
(SEE SHEET N° 2)



TYPICAL WING WALL
SCALE 3/8" = 1'-0"

| | |
|--------------------------------|--------------|
| 11-26-49 | CONSTRUCTION |
| 11-22-49 | ADVERTISING |
| DATE | DESCRIPTION |
| USE ONLY PRINTS OF LATEST DATE | |



ESTIMATED QUANTITIES
NOT GUARANTEED

| | | |
|----------------------------------|--------|----------|
| CLASS B ROCK EXCAVATION | 10 | CU. YDS. |
| BRIDGE EXCAVATION | 1470 | CU. YDS. |
| GRAVEL BORROW | 700 | CU. YDS. |
| CLASS A CEMENT CONCRETE MASONRY | 452 | CU. YDS. |
| CLASS B CEMENT CONCRETE MASONRY | 453 | CU. YDS. |
| CLASS D CEMENT CONCRETE MASONRY | 48 | CU. YDS. |
| STEEL REINF. FOR STRUCTURES | 78,000 | POUNDS |
| MEMBRANE WATERPROOFING | 298 | SQ. YDS. |
| WATERPROOFING PROTECTIVE COURSE | 247 | SQ. YDS. |
| BITUMINOUS DAMP-PROOFING | 255 | SQ. YDS. |
| SAWED FACE GRANITE | 351 | SQ. FT. |
| GRANITE END POSTS RELOCATED | 2 | EACH |
| GRANITE SIDEWALKS RELOCATED | 2 | EACH |
| GRANITE COPING | 176 | LIN. FT. |
| GRANITE CURB TYPE VA STR. (C&K2) | 123 | LIN. FT. |
| CUTTING INTO CONCRETE WALLS | 80 | SQ. FT. |
| CONCRETE EXCAVATION | 109 | CU. YDS. |
| GRANITE COPING RELOCATED | 44 | LIN. FT. |
| SAWED FACE GRANITE RELOCATED | 76 | SQ. FT. |

BORING NOTES: LOCATION OF BORINGS SHOWN ON KEY PLAN THUS BORINGS TAKEN FOR PURPOSES OF DESIGN, AND INDICATE CONDITIONS AT BORING POINTS ONLY, BUT DO NOT NECESSARILY SHOW NATURE OF MATERIAL TO BE ENCOUNTERED IN CONNECTION WITH THE CONSTRUCTION OF THE BRIDGE. FIGURES IN COLUMNS INDICATE BLOWS PER FOOT ON 1" PIPE PRODUCED BY 30" FALL OF 140" HAMMER. SAMPLES FROM BORINGS ARE AVAILABLE, AND MAY BE SEEN AT THE OFFICE OF THE BRIDGE ENGINEER, ROOM 602.

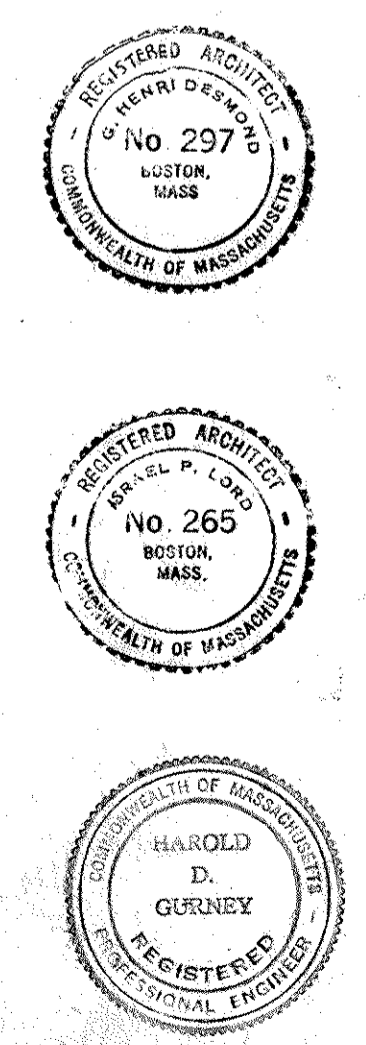
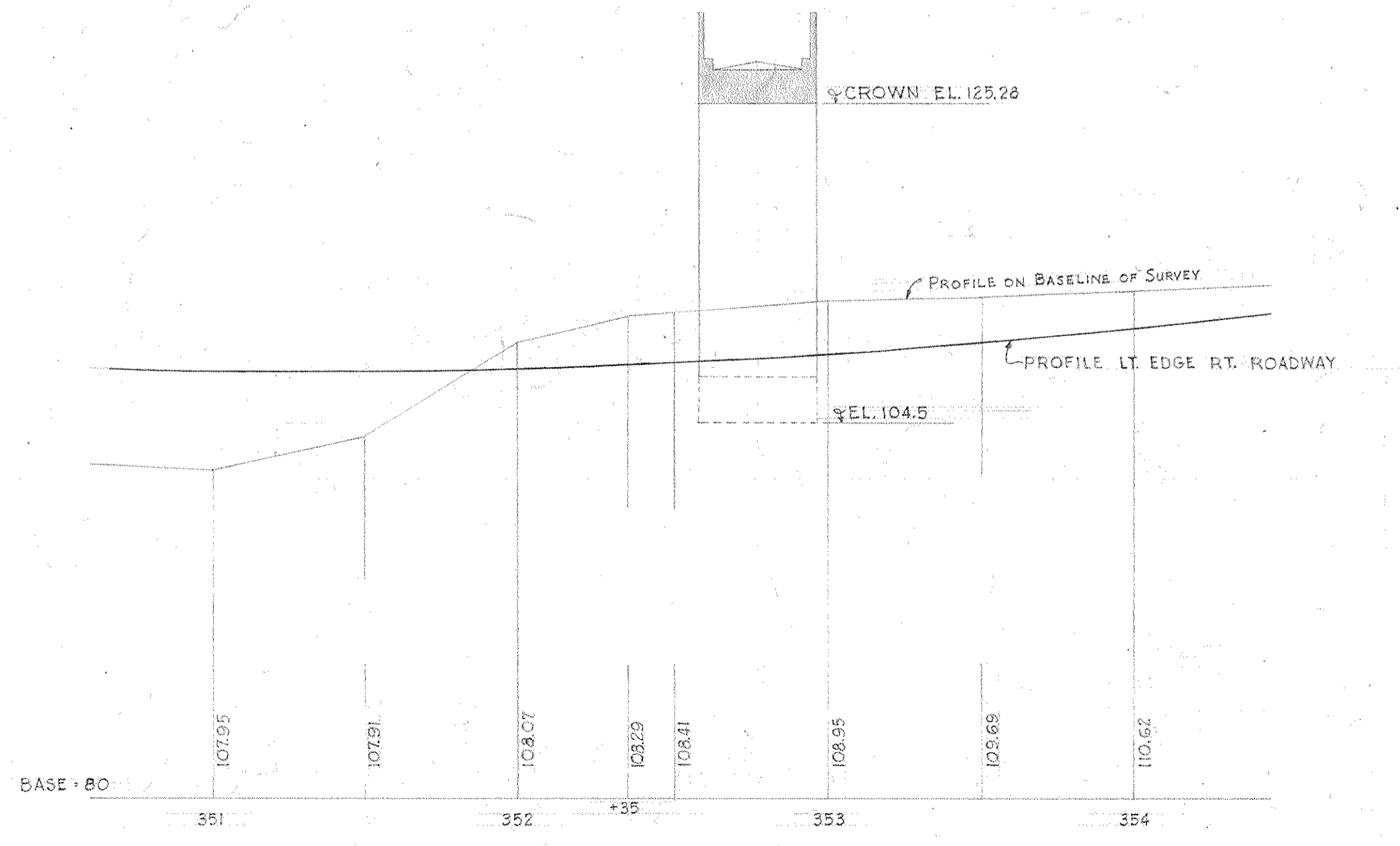
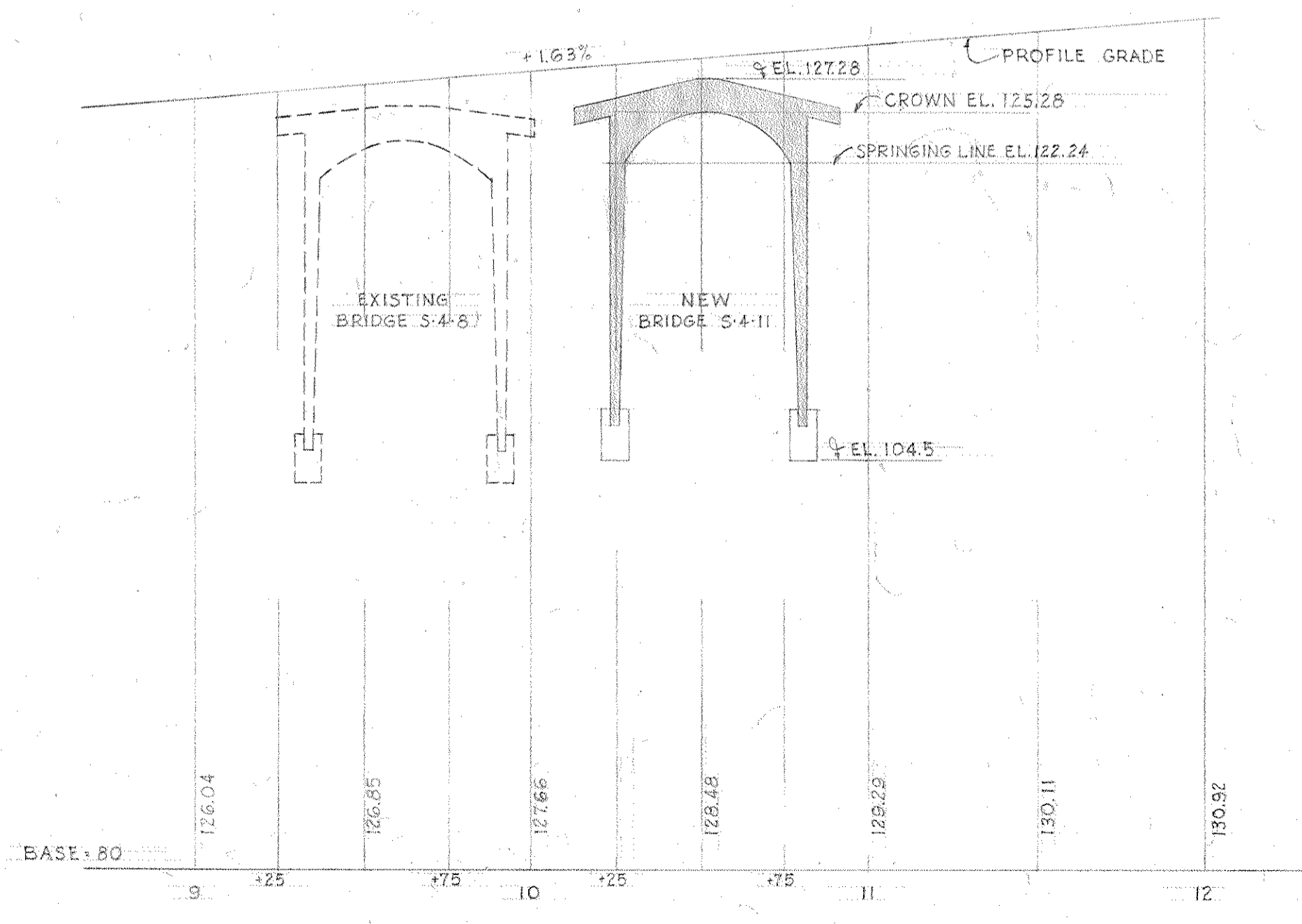
GENERAL NOTES

FOUNDATION:
MAY BE ALTERED IF NECESSARY TO SUIT CONDITIONS OF CONSTRUCTION.

DESIGN:
ACCORDING TO STANDARD SPECIFICATIONS OF THE AMERICAN ASSOCIATION OF STATE HIGHWAY OFFICIALS, 1949 EDITION FOR H2O LOADING.

BENCH MARK:
SPIKE IN 16" PINE STA. 352+40 135' LEFT. ELEVATION 115.735' U.S.C. & G.S. MEAN SEA LEVEL.

DATE & SEAL:
END POST CONTAINING PRESENT DATE AND SEAL TO BE REMOVED AND RELOCATED TO SHOW DATE AND SEAL ON ROADWAY FACE OF SOUTHEASTERLY END OF NEW CONSTRUCTION. FOR DETAILS SEE SHEET N#2.



1-10-53 ISSUED FOR CONSTRUCTION

THE COMMONWEALTH OF MASSACHUSETTS
PROPOSED BRIDGE
SANDWICH
MID-CAPE HIGHWAY STA. 352+77.80
UNDER CHASE RD.
SCALES AS NOTED
OFFICE OF
DEPARTMENT OF PUBLIC WORKS
100 NASHUA ST., BOSTON, MASS.
JAN. 1953

J. Gurney BRIDGE ENGINEER
W.C. Ruttle CHIEF ENGINEER

DESMOND & LORD, ARCHITECTS & ENGINEERS

