

**07 FOR INFORMATION ONLY (FIO)  
INDEX OF DRAWINGS**

DRAWING NUMBER	DRAWING TITLE
FIO-01	INDEX OF DRAWINGS
FIO-02	EXISTING BRIDGE - GENERAL PLAN
FIO-03	EXISTING BRIDGE - ABUTMENT NO. 1
FIO-04	EXISTING BRIDGE - ABUTMENT NO. 2
FIO-05	EXISTING BRIDGE - PIERS
FIO-06	EXISTING BRIDGE - SUPERSTRUCTURE
FIO-07	FRONTIER - TEMPORARY FIRST STAGE
FIO-08	FRONTIER - PERMANENT SECOND STAGE

REV.	DATE	REVISION DESCRIPTION

**FOR INFORMATION ONLY**

SIGNATURE BLOCK: **M**  
**M** 175 CAPITAL BLVD  
 4TH FLOOR  
 MOTT MACDONALD ROCKY HILL, CT 06067  
 DESIGNER/DRAFTER: BPC CHECKED BY: DJL



PROJECT TITLE:  
**REPLACEMENT OF BRIDGE No. 03474, ROUTE 200 OVER INTERSTATE 395**

TOWN(S):  
**TOWN OF THOMPSON**

DRAWING TITLE:  
**INDEX OF DRAWINGS**

PROJECT NO.:  
**0141-0158**

DRAWING NO.:  
**FIO-01**  
 SHEET NO.:  
 07.01

### GENERAL NOTES

**Specifications:** Connecticut State Highway Department Form 809 (Jan. 1963) and Special Provisions.

**Design Specifications:** Standard Specifications for Highway Bridges (A.A.S.H.O.-1961) as supplemented by the Connecticut State Highway Department Bridge Manual (1964).

**Live Load:** HS20-44

**Future Paving Allowance:** None.

**Composite Construction:** No temporary intermediate supports shall be used during the pouring and setting of the concrete deck slab. Temporary supports may be used for structural steel erection only. Live and super-imposed dead loads will be permitted when directed by the Engineer but not less than 10 days after the slab has been poured.

**Class "A" Concrete:** Class "A" Concrete shall be used for the entire substructure and the safety walks and parapets of the U-Type wings.

**Class "C" Concrete:** Class "C" Concrete shall be used for bridge slabs including concrete safety walks, sidewalks, and parapets.

**Joint Seal:** See Special Provisions for Concrete for Structures.

**Paraffin:** The cost of furnishing and applying paraffin and caulking paraffin joints is included in the item for Class "C" Concrete.

**Exposed Edges:** Exposed Edges shall be beveled 1"x1" unless dimensioned otherwise.

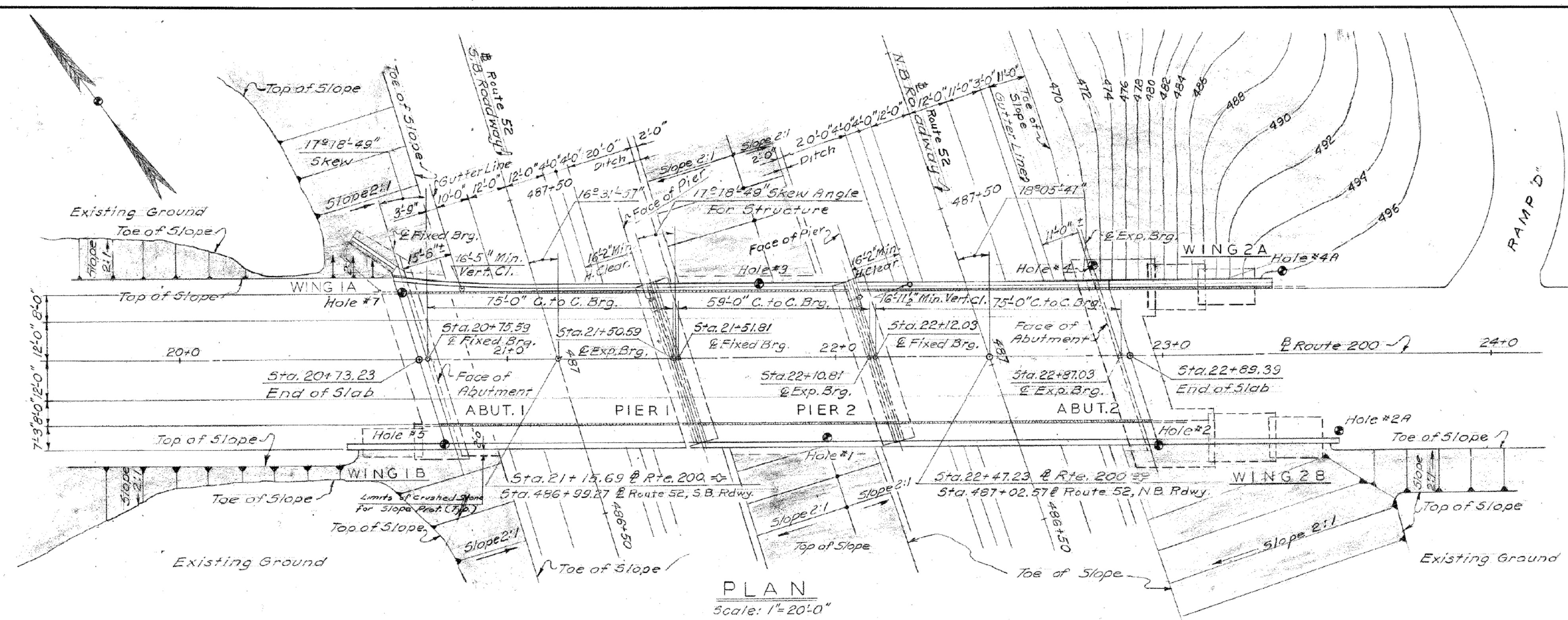
**Structural Steel:** See Bridge Sheet No. 7 of 9 for A.S.T.M. designations.

**Allowable Design Stresses:** Class "A" & Class "C" Concrete,  $f_c = 1200$  psi.  
Reinforcement (Intermediate grade steel)  $f_s = 20,000$  psi.  
Structural Steel A.S.T.M. A36  $F_y = 20,000$  psi, all thicknesses.

**Felt:** The cost of furnishing and placing 15¢ felt is included in the item for "Class "A" Concrete".

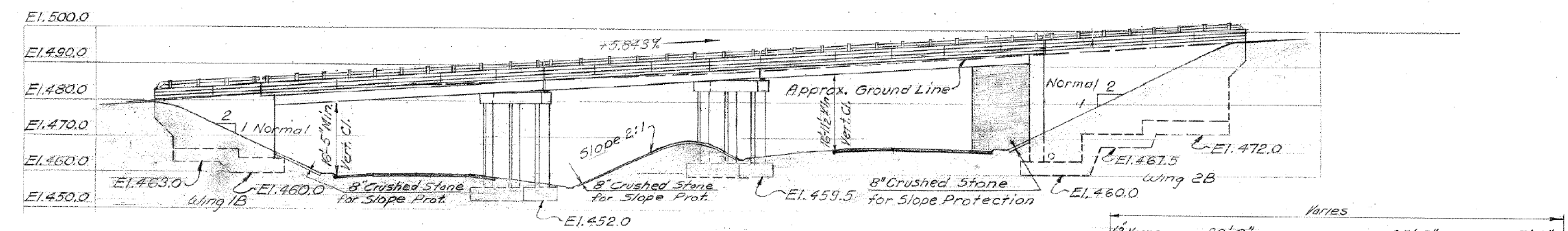
**Foundation Pressures:** The various Group Loadings noted on the substructure plan sheets refer to the Group Loads as given in subsection 1.4.1 of the A.A.S.H.O. Standard Specifications for Highway Bridges.

**Construction Joints:** Construction Joints, other than those shown on the plans, will not be permitted without prior approval of the Engineer.

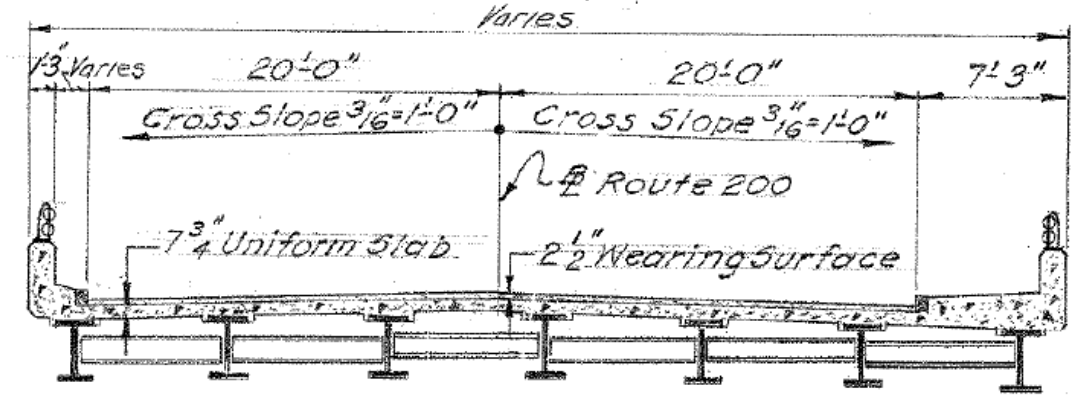


PLAN  
Scale: 1"=20'-0"

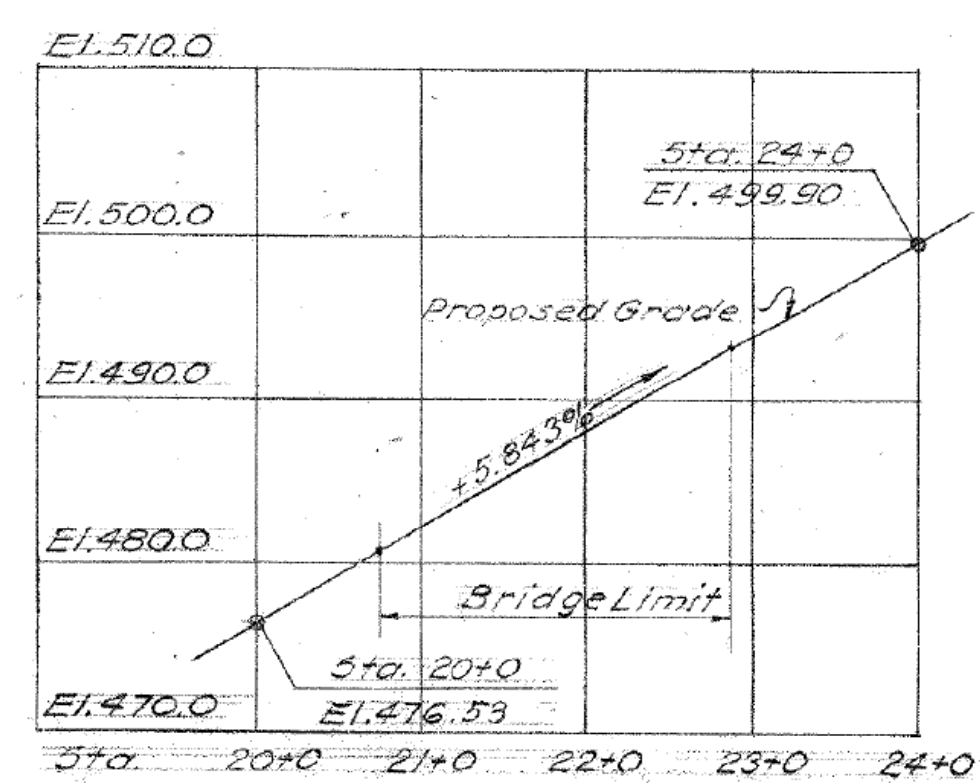
NO REVISIONS SUBMITTED FOR THIS SHEET



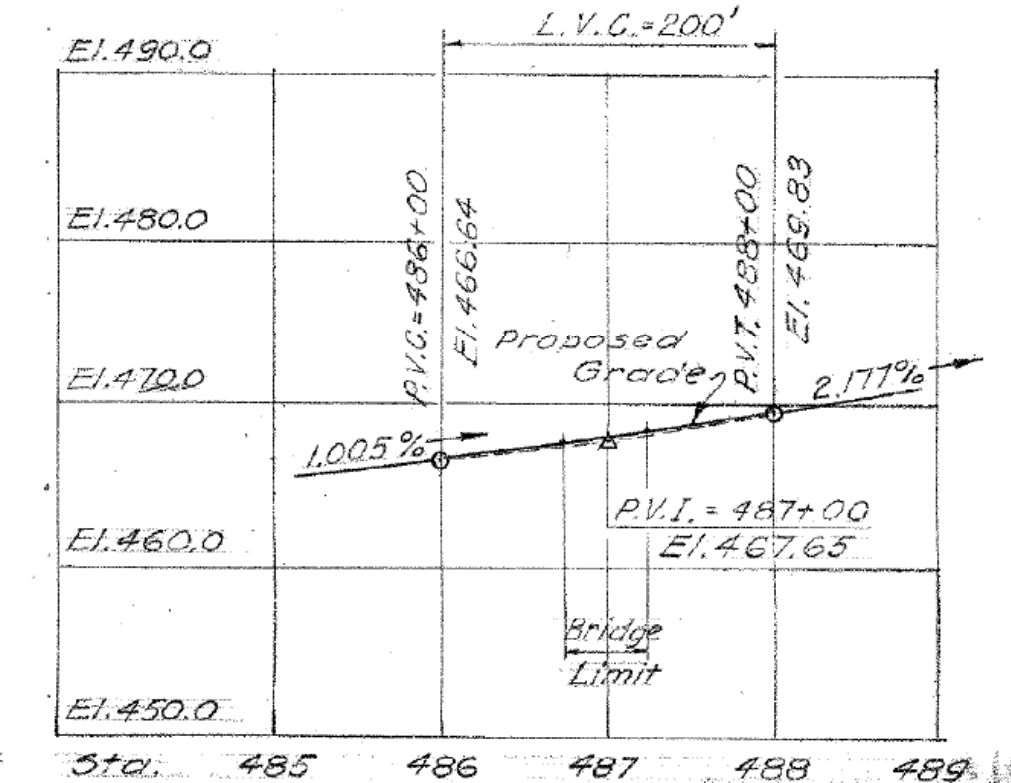
ELEVATION  
Scale: 1"=20'-0"



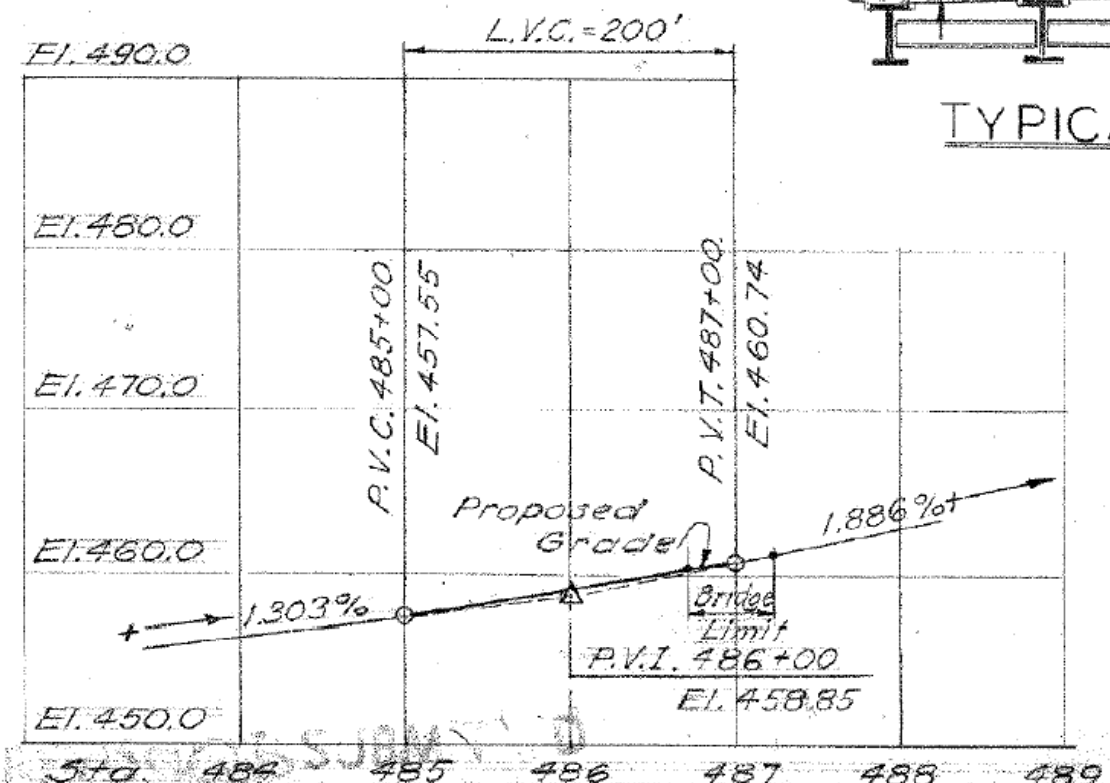
TYPICAL BRIDGE SECTION  
Scale: 1/2"=1'-0"



PROFILE @ ROUTE 200  
Scale: 1"=100'-0" Horiz., 1"=10'-0" Vert.



PROFILE @ ROUTE 52 N.B. RDWY  
Scale: 1"=100'-0" Horiz., 1"=10'-0" Vert.



PROFILE @ ROUTE 52 S.B. RDWY  
Scale: 1"=100'-0" Horiz., 1"=10'-0" Vert.

QUANTITIES		
Expansion Bearing-Lubricated Bronze Type	Ea.	21
Protective Compound for Bridges	S.Y.	320
Structure Excavation-Earth (Complete)	C.Y.	2234
Structure Excavation-Rock (Complete)	C.Y.	300
Class "A" Concrete	C.Y.	1,183
Class "C" Concrete	C.Y.	402
6" ACCM Pipe	L.F.	26
6" Pref. ACCM Pipe (Bridge)	L.F.	54
6" Pref. Expan. Jt. filler for Bridges	S.F.	316
Deformed Steel Bars	Lb.	206,900
Structural Steel	Cwt.	3265
Dampproofing	S.Y.	602
Metal Bridge Rail	L.F.	572
Previous Structure Backfill	C.Y.	3149
6"x12" Granite Stone Curbing for Bridges	L.F.	510
Crushed Stone for Slope Protection	Ton	168
Shear Connectors	L.F.	1463
Gravel Fill	C.Y.	55
1/2" Wrought Iron Pipe	L.F.	18
Membrane Waterproofing (Woven Glass Fabric)	S.Y.	965
Bituminous Concrete Wearing Surface	Ton	130
Neoprene Plate for Bridge Expansion Joint	L.F.	110
Brigged Stone	C.Y.	1

INSPECTION OF FIELD WELDS		
METHOD	UNIT	QUANTITY
Radiographic	in.	0
Magnetic Particle	l.f.	0

CONCRETE DISTRIBUTION		
Superstructure	C.Y.	402
Substructure	C.Y.	685
Footings	C.Y.	498
<b>Total</b>	<b>C.Y.</b>	<b>1585</b>

THE INFORMATION, INCLUDING ESTIMATED QUANTITIES OF WORK SHOWN ON THESE SHEETS IS BASED ON LIMITED INVESTIGATIONS BY THE STATE AND IS IN NO WAY WARRANTED TO INDICATE THE TRUE CONDITIONS OR ACTUAL QUANTITIES OR DISTRIBUTION OF QUANTITIES OF WORK WHICH WILL BE REQUIRED.

CONNECTICUT  
STATE HIGHWAY DEPARTMENT  
TOWN OF THOMPSON  
ROUTE 52  
N.B. & S.B. ROADWAYS  
UNDER  
ROUTE 200  
GENERAL PLAN

REVISIONS		
NO.	DATE	DESCRIPTION

DESIGNED BY: R.E.S.  
 SCALES: As Noted  
 MADE BY: G.O.K. DATE: 2.20.63  
 CHECKED BY: W.F.D. DATE: 7.18.63  
 APPROVED: [Signature] DATE: 6/11/63

REV.	DATE	DESCRIPTION

FOR INFORMATION ONLY

SIGNATURE BLOCK: M  
 MOTT MACDONALD  
 175 CAPITAL BLVD  
 4TH FLOOR  
 ROCKY HILL, CT 06067  
 DESIGNER/DRAFTER: BPC  
 CHECKED BY: DJL

NOT TO SCALE



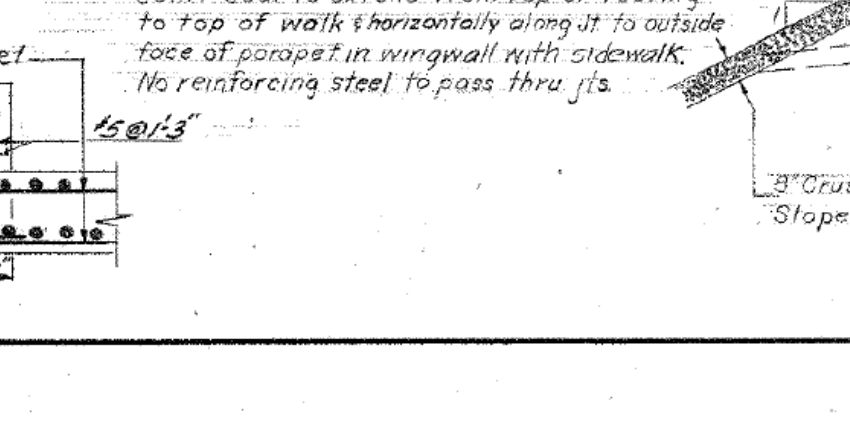
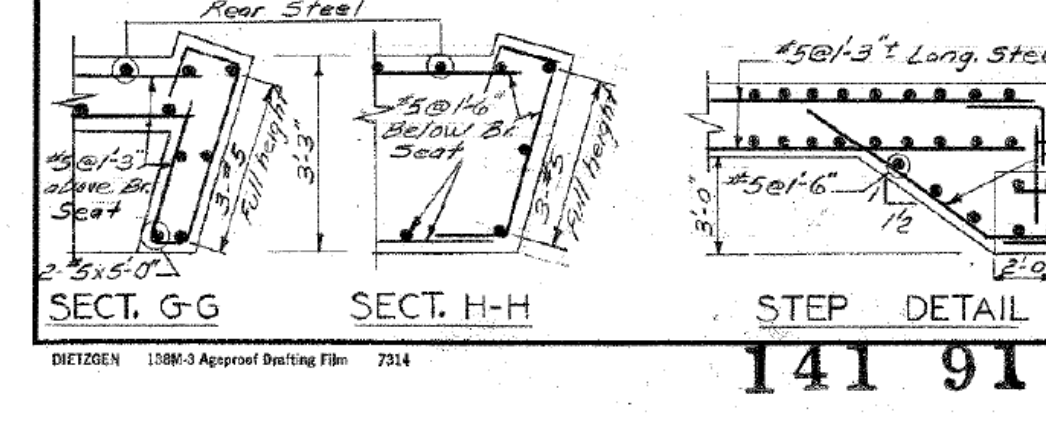
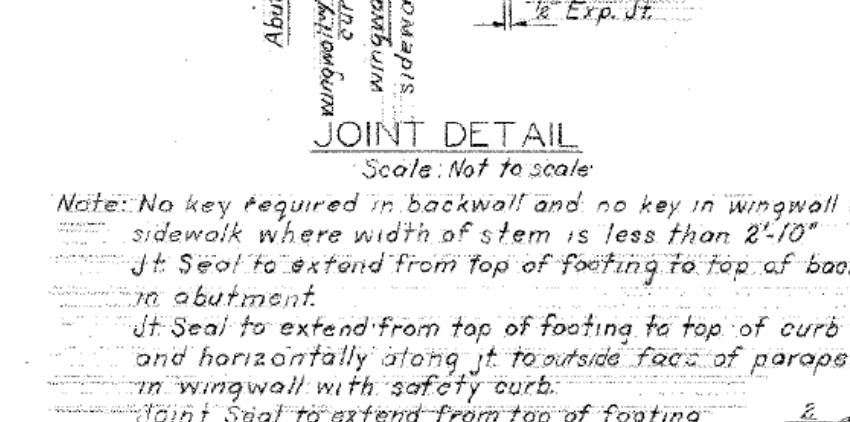
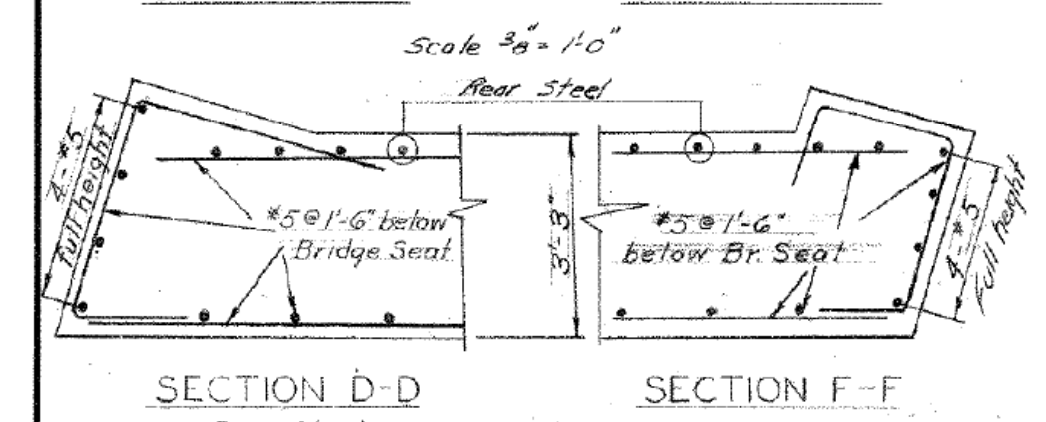
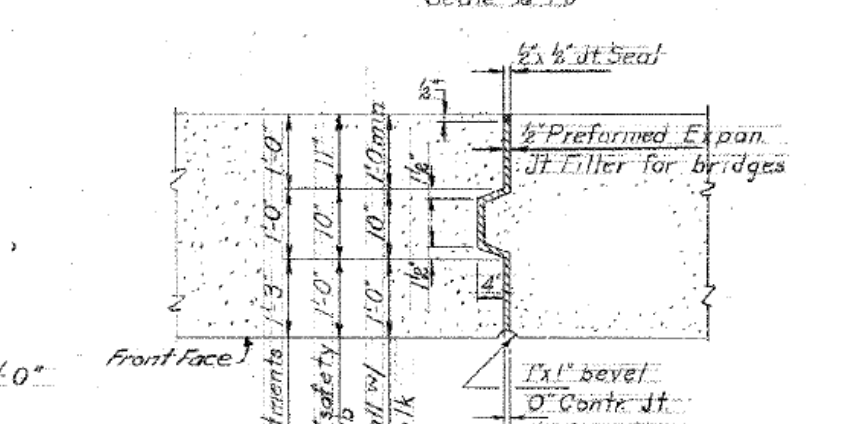
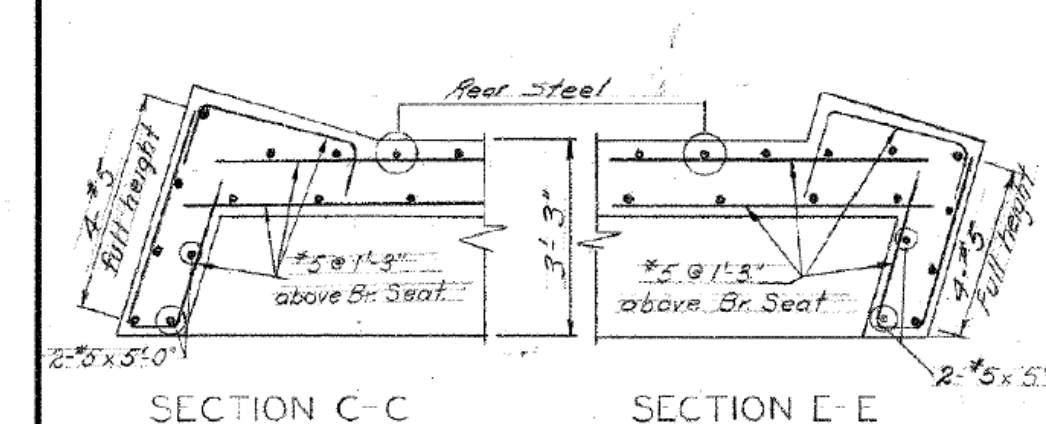
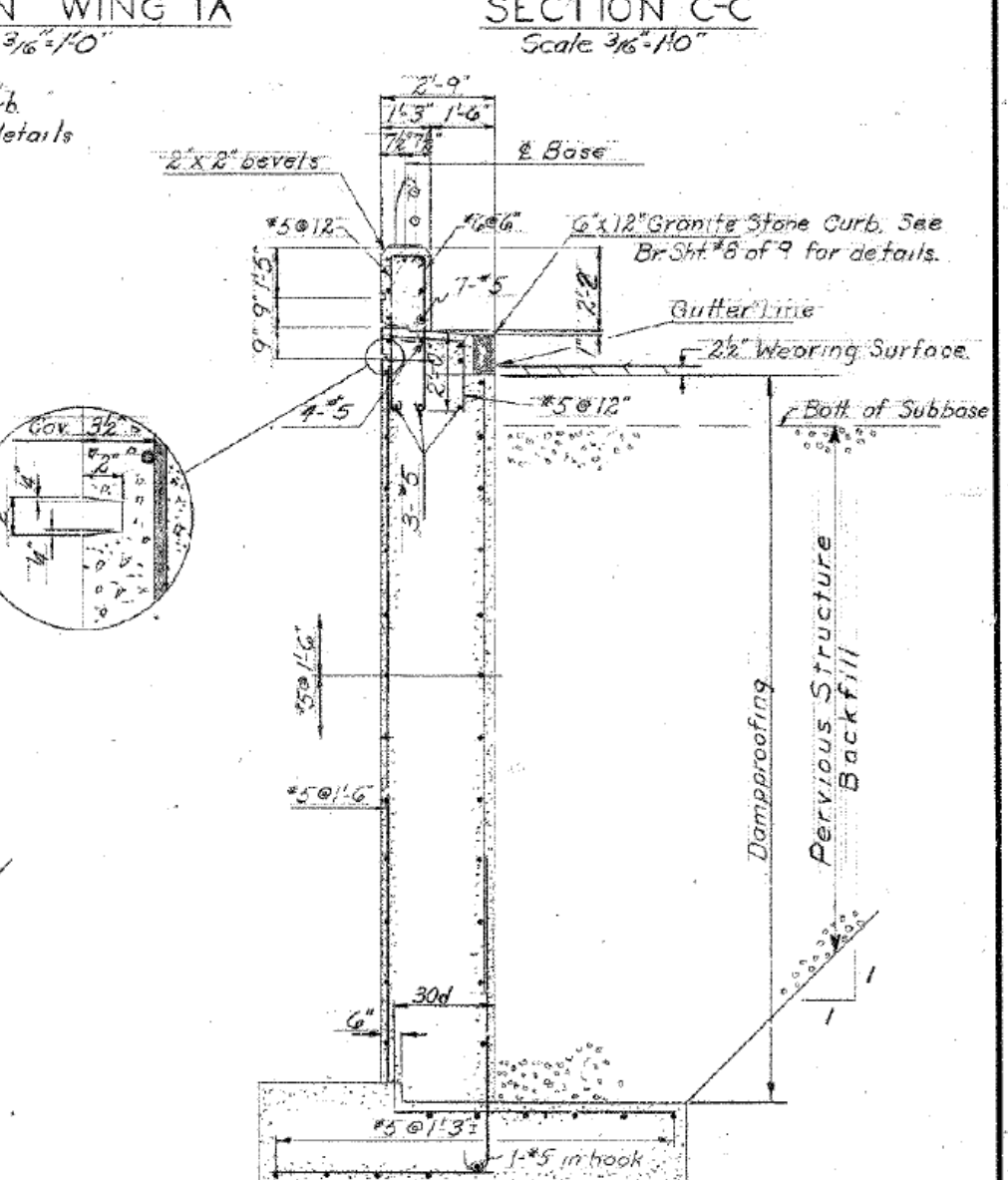
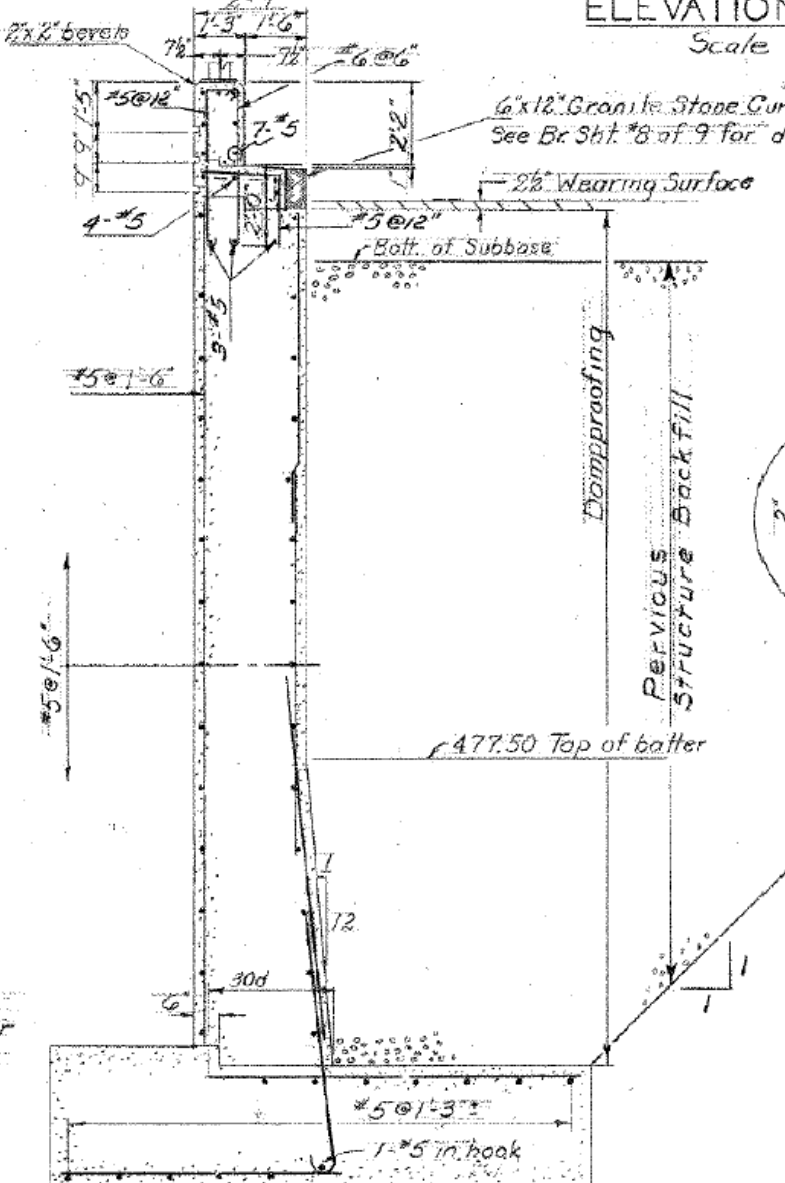
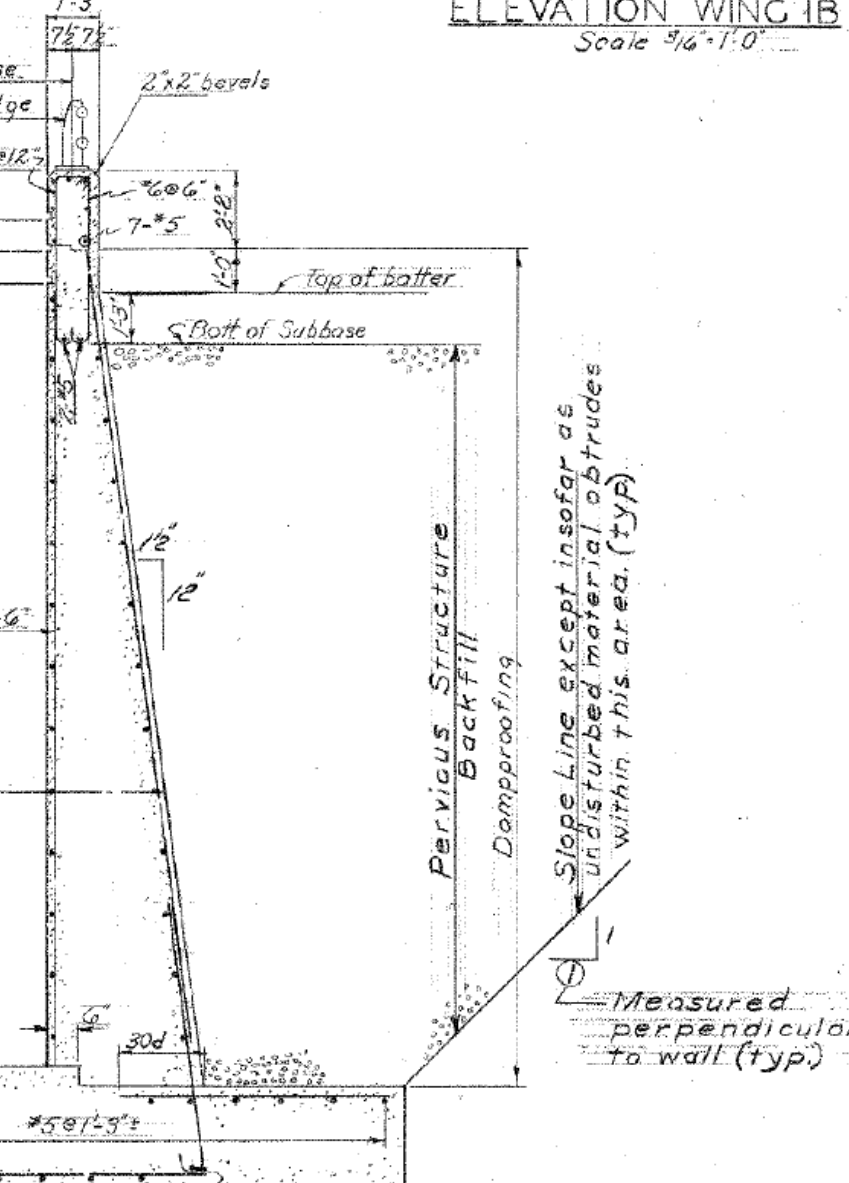
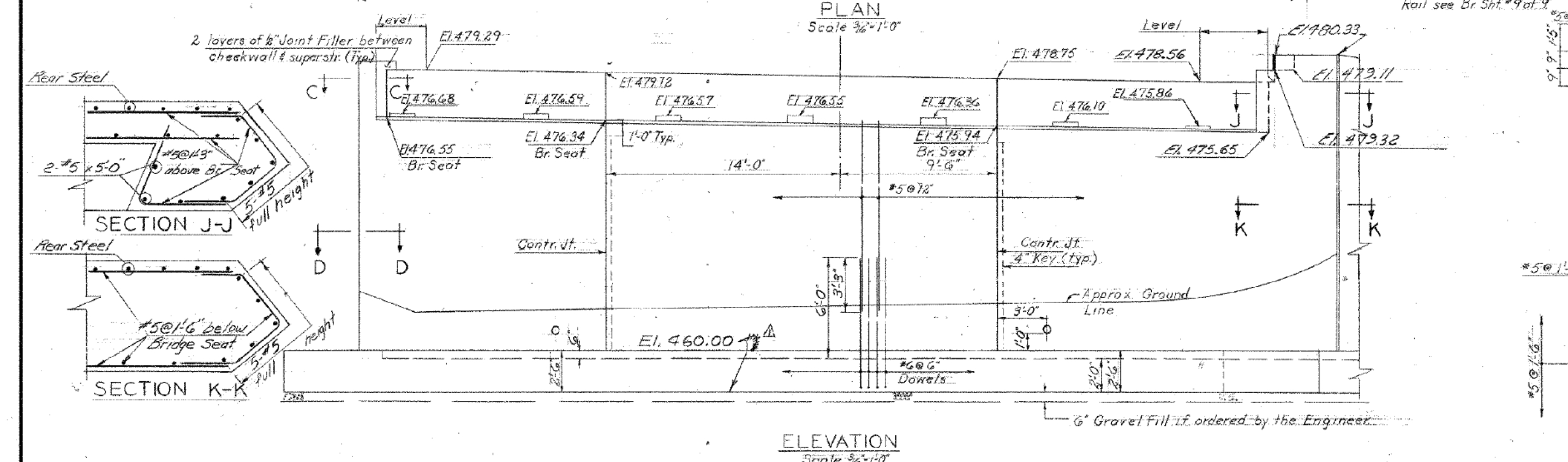
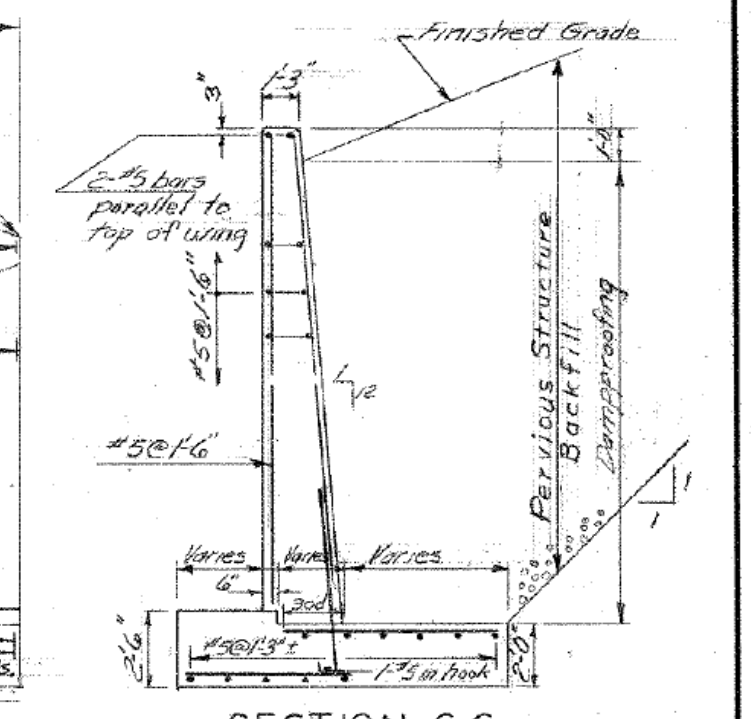
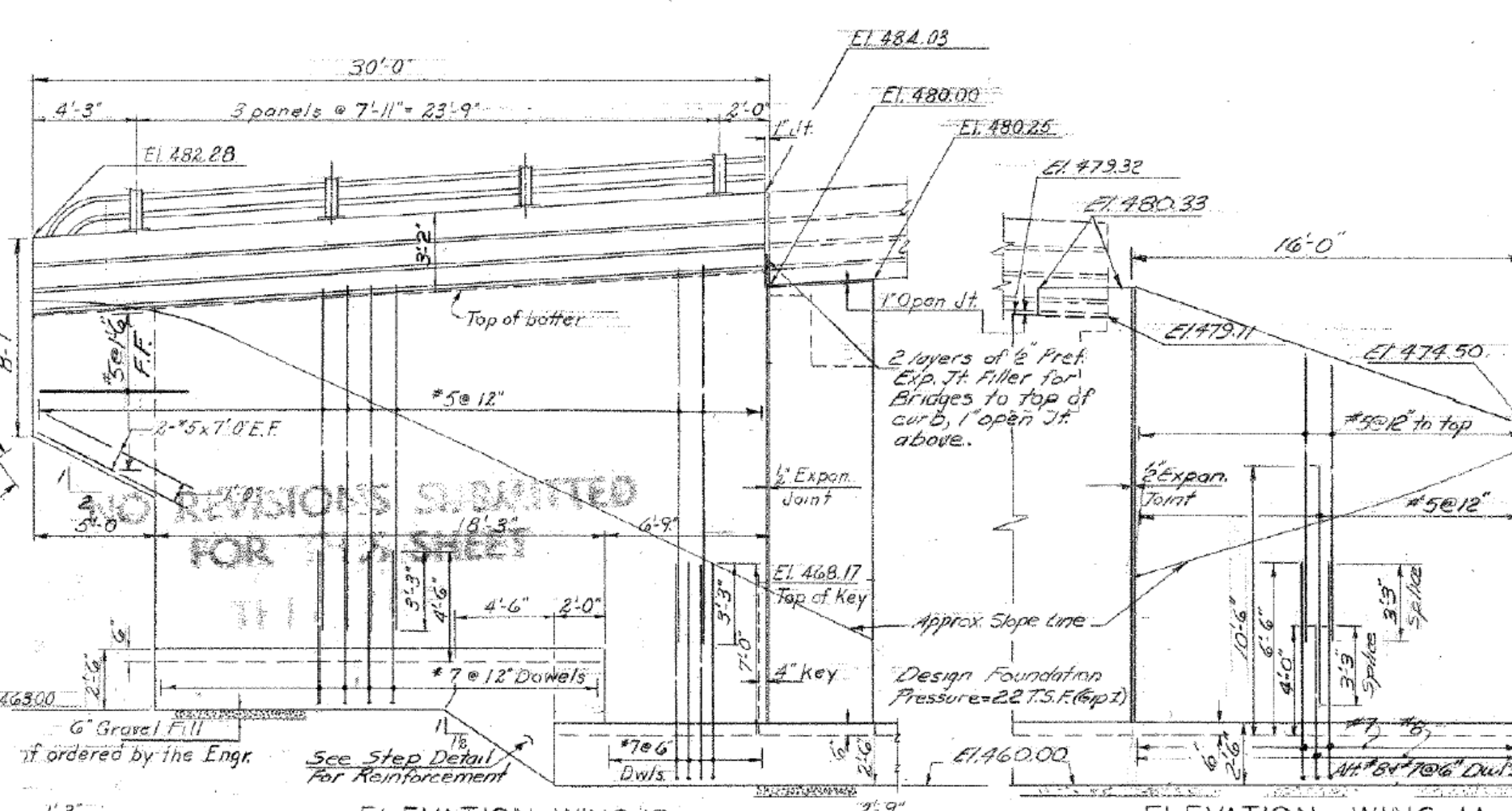
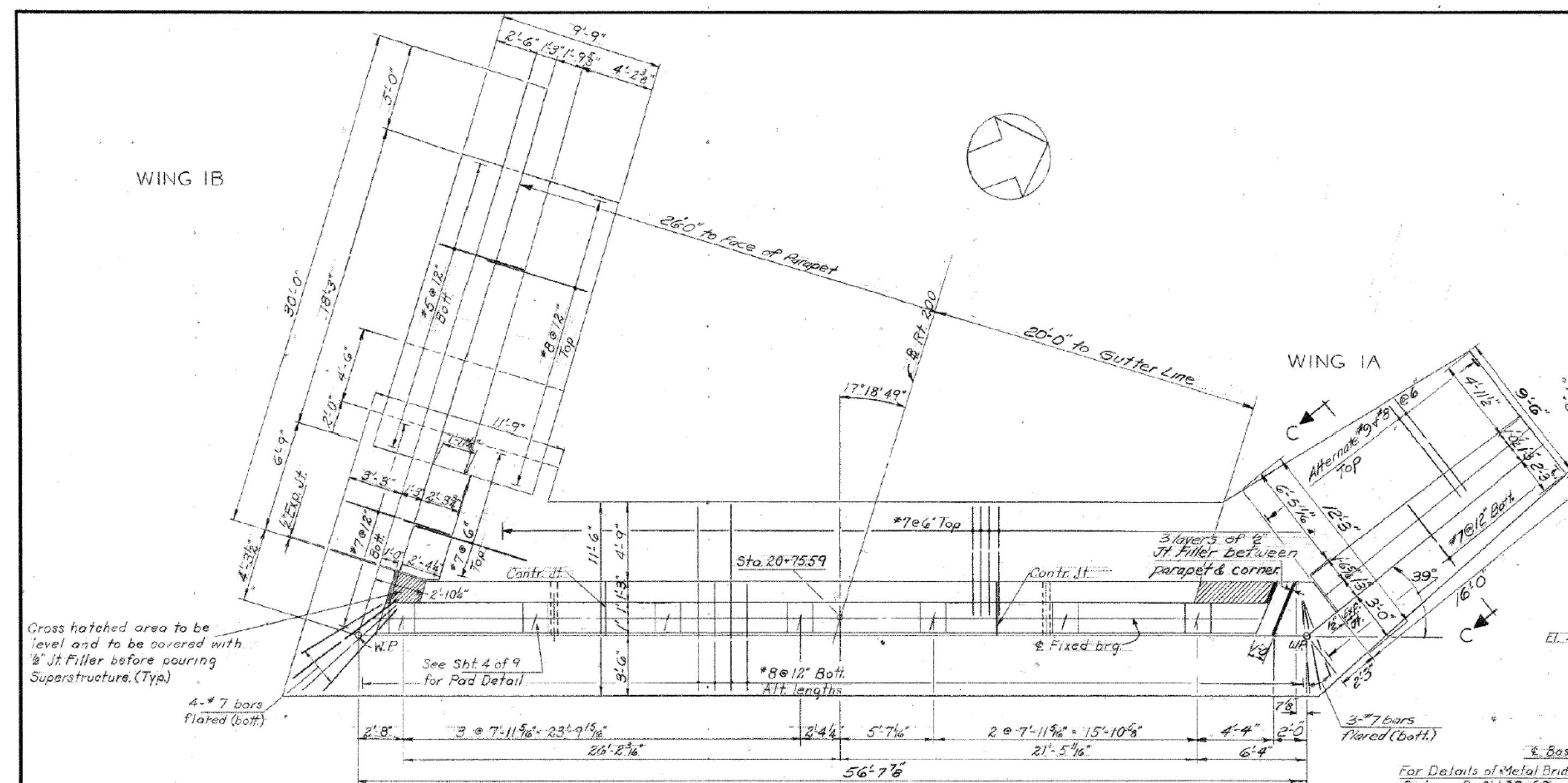
PROJECT TITLE:  
**REPLACEMENT OF BRIDGE No. 03474, ROUTE 200 OVER INTERSTATE 395**

TOWN(S):  
**TOWN OF THOMPSON**

DRAWING TITLE:  
**EXISTING BRIDGE - GENERAL PLAN**

PROJECT NO.:  
**0141-0158**  
 DRAWING NO.:  
**FIO-02**  
 SHEET NO.:  
**07.02**

PUB. ROAD DIV. NO.	STATE	TOWN	FED. AID PROJ. NO.	PROJ. NO.	YEAR	ROUTE NO.	SHEET NO.	TOTAL SHEETS
1	CONN.	Thompson		141-91	1966	52	25	312



Notes: Reinforcing steel in stem to have 2" cover except as shown otherwise.  
 Reinforcing steel in footing to have 3" cover.  
 All longitudinal bars to be spliced 20d except those in top of heel which shall be spliced 30d.  
 For reinforcing steel not dimensioned see Plan and Elevation Views.  
 Work this sheet with Br. Sht. 4 of 9

**NO REVISIONS SUBMITTED FOR THIS SHEET.**

THE INFORMATION, INCLUDING ESTIMATED QUANTITIES OF WORK SHOWN ON THESE SHEETS IS BASED ON LIMITED INVESTIGATIONS BY THE STATE AND IS IN NO WAY WARRANTED TO INDICATE THE TRUE CONDITIONS OR ACTUAL QUANTITIES OR DISTRIBUTION OF QUANTITIES OF WORK WHICH WILL BE REQUIRED.

REVISIONS		
NO.	DATE	DESCRIPTION
1	5-17-63	revised Hg. Elev.

**CONNECTICUT STATE HIGHWAY DEPARTMENT**  
 TOWN OF THOMPSON  
 ROUTE 52  
 N.B. & S.B. ROADWAYS  
 UNDER  
 ROUTE 200  
 ABUTMENT NO. 1

DESIGNED BY: <i>R.E.G.</i>	PROJECT NO.: 141-91-03D
MADE BY: <i>T.S.R.</i>	DATE: 5-23-63
CHECKED BY: <i>M.F.D.</i>	DATE: 7-17-63
APPROVED: <i>E.J. Keeney</i>	DATE: 6/26/63
BRIDGE SHEET NO.: 3 of 9	

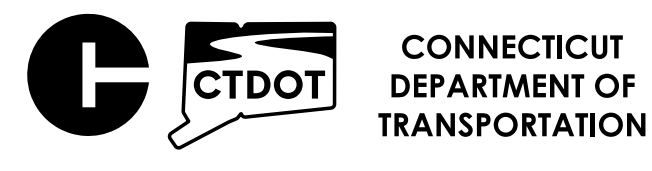
**m358 01**

**85**

**FOR INFORMATION ONLY**

SIGNATURE BLOCK: **M**  
 MOTT MACDONALD  
 175 CAPITAL BLVD  
 4TH FLOOR  
 ROCKY HILL, CT 06067

NOT TO SCALE



PROJECT TITLE:  
**REPLACEMENT OF BRIDGE No. 03474, ROUTE 200 OVER INTERSTATE 395**

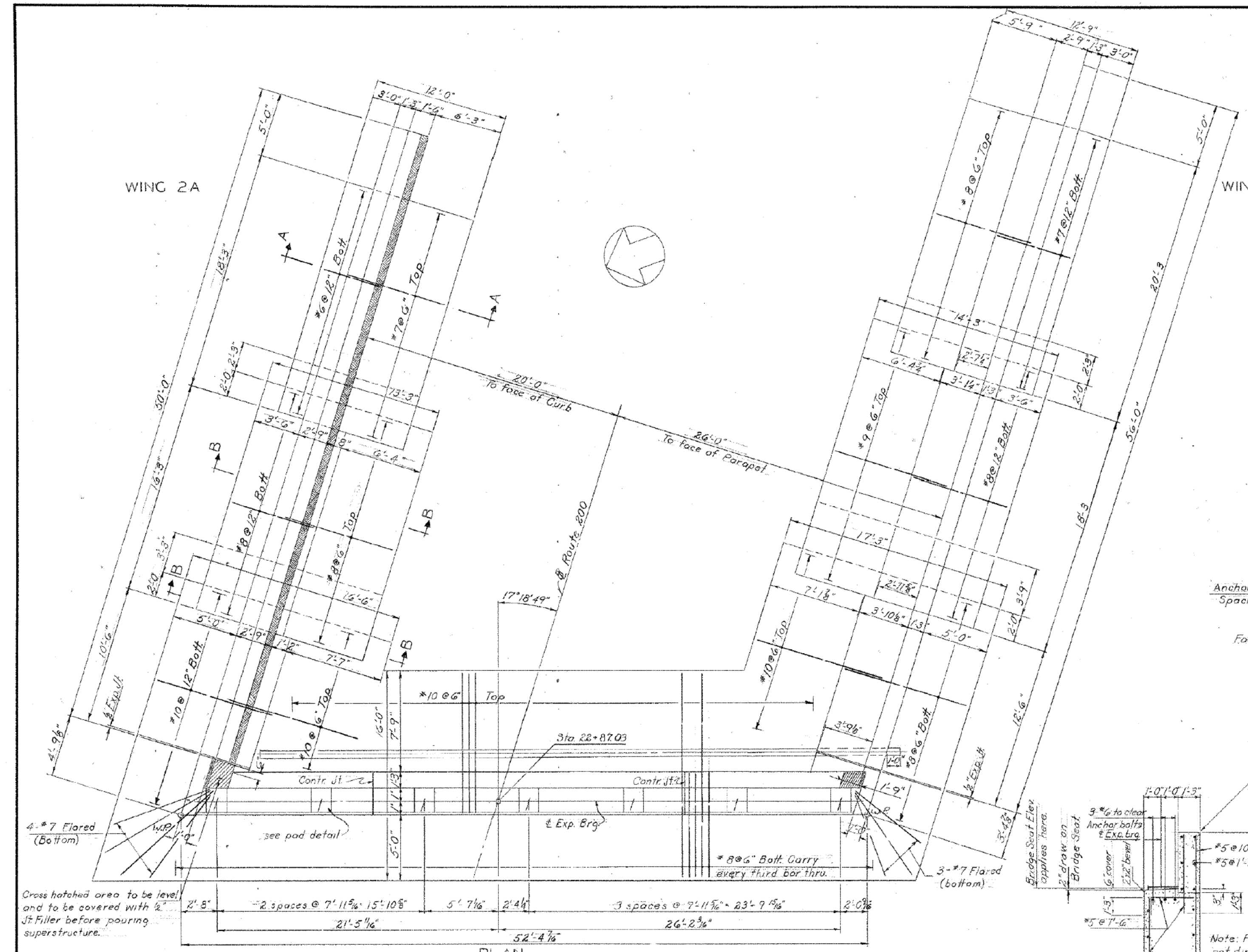
TOWN(S):  
**TOWN OF THOMPSON**

DRAWING TITLE:  
**EXISTING BRIDGE - ABUTMENT 1**

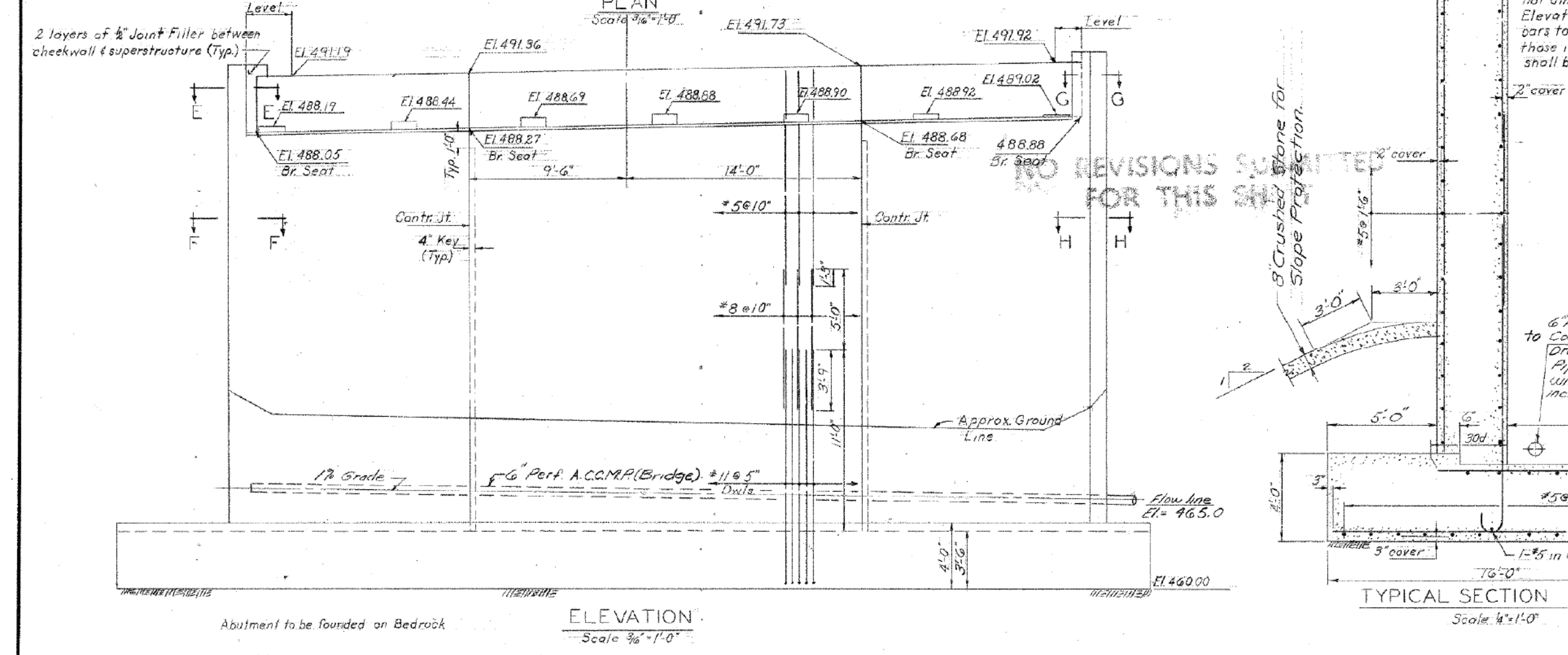
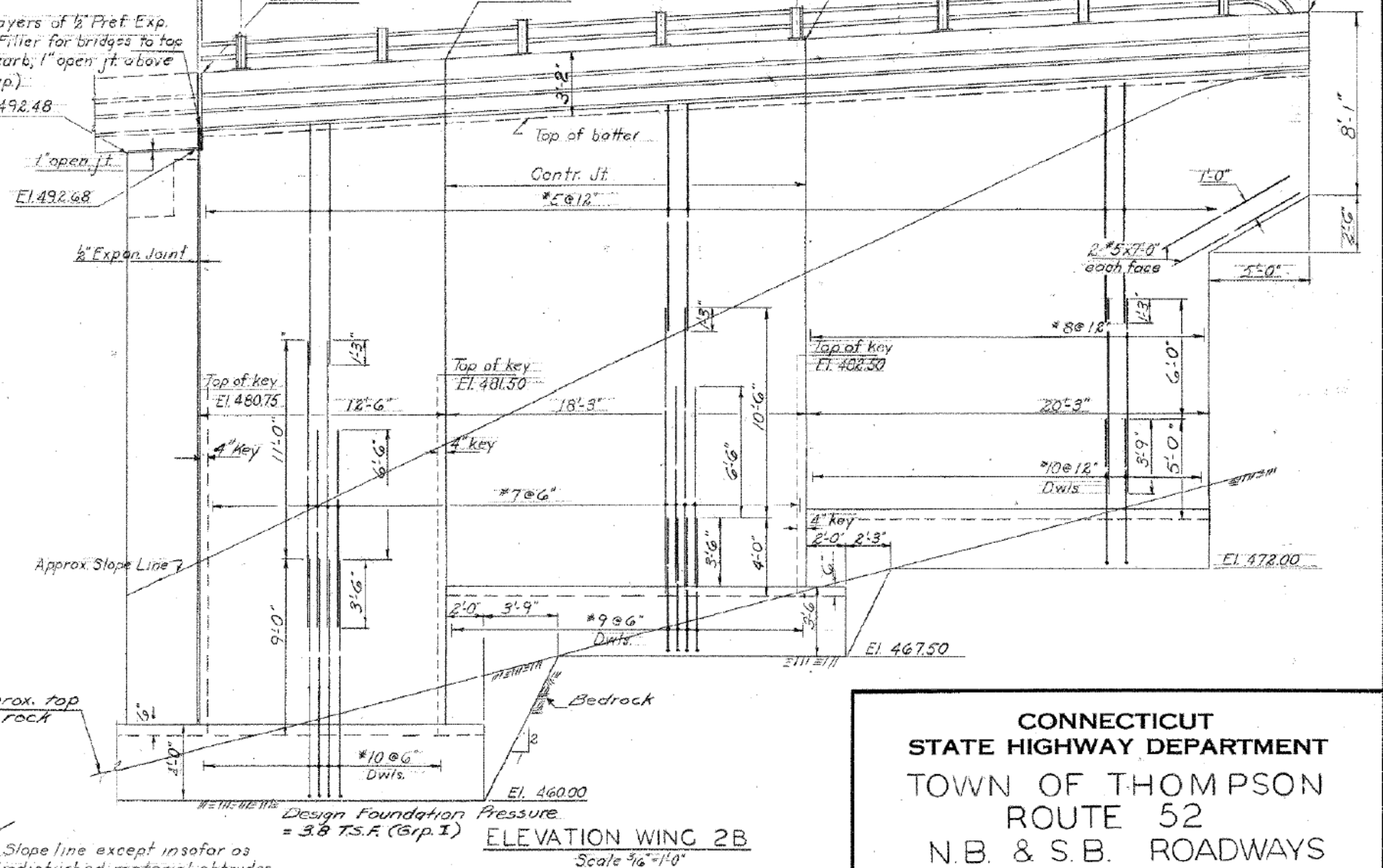
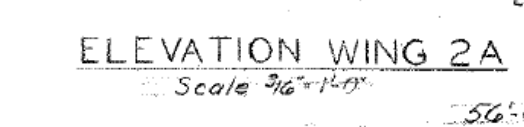
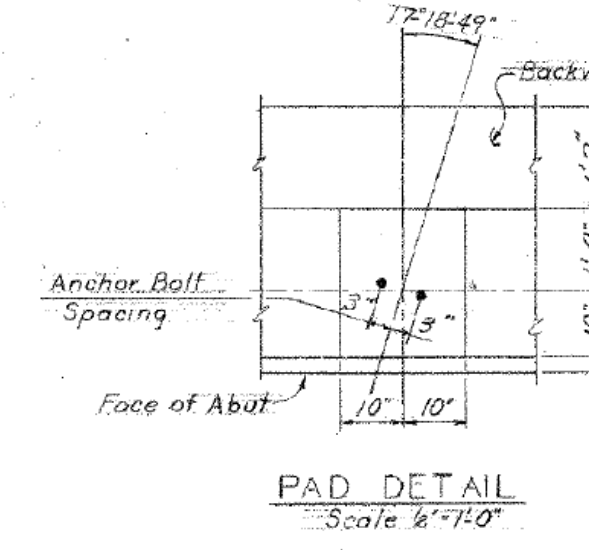
PROJECT NO.:  
**0141-0158**

DRAWING NO.:  
**FIO-03**

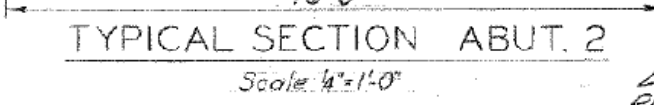
PUR. ROAD DIV. NO.	STATE	TOWN	FED. AID PROJ. NO.	PROJ. NO.	YEAR	ROUTE NO.	SHEET NO.	TOTAL SHEETS
1	CONN.	Thompson		141-91	1265	52	86	312



**NO REVISIONS SUBMITTED FOR THIS SHEET**



Notes: For Reinforcing steel not dimensioned see Plan & Elevation Views. All long bars to be spliced 20d except those in top of heel which shall be spliced 30d.



CONNECTICUT  
STATE HIGHWAY DEPARTMENT  
TOWN OF THOMPSON  
ROUTE 52  
N.B. & S.B. ROADWAYS  
UNDER  
ROUTE 200  
ABUTMENT NO. 2

REVISIONS		
NO.	DATE	DESCRIPTION

DESIGNED BY: A.S.S.  
 SCALES: as noted  
 MADE BY: T.S.R. DATE: 5-22-63  
 CHECKED BY: M.F.D. DATE: 7-18-63  
 APPROVED: [Signature] DATE: 6/16/63

THE INFORMATION, INCLUDING ESTIMATED QUANTITIES OF WORK SHOWN ON THESE SHEETS IS BASED ON LIMITED INVESTIGATIONS BY THE STATE AND IS IN NO WAY WARRANTED TO INDICATE THE TRUE CONDITIONS OR ACTUAL QUANTITIES OR DISTRIBUTION OF QUANTITIES OF WORK WHICH WILL BE REQUIRED.

REV.	DATE	REVISION DESCRIPTION

**FOR INFORMATION ONLY**

SIGNATURE BLOCK: M  
 MOTT MACDONALD  
 175 CAPITAL BLVD  
 4TH FLOOR  
 ROCKY HILL, CT 06067

NOT TO SCALE



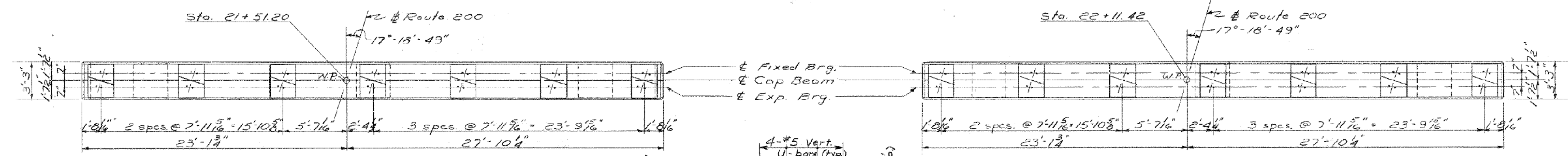
PROJECT TITLE:  
**REPLACEMENT OF BRIDGE No. 03474, ROUTE 200 OVER INTERSTATE 395**

TOWN(S):  
**TOWN OF THOMPSON**

DRAWING TITLE:  
**EXISTING BRIDGE - ABUTMENT 2**

PROJECT NO.:  
**0141-0158**

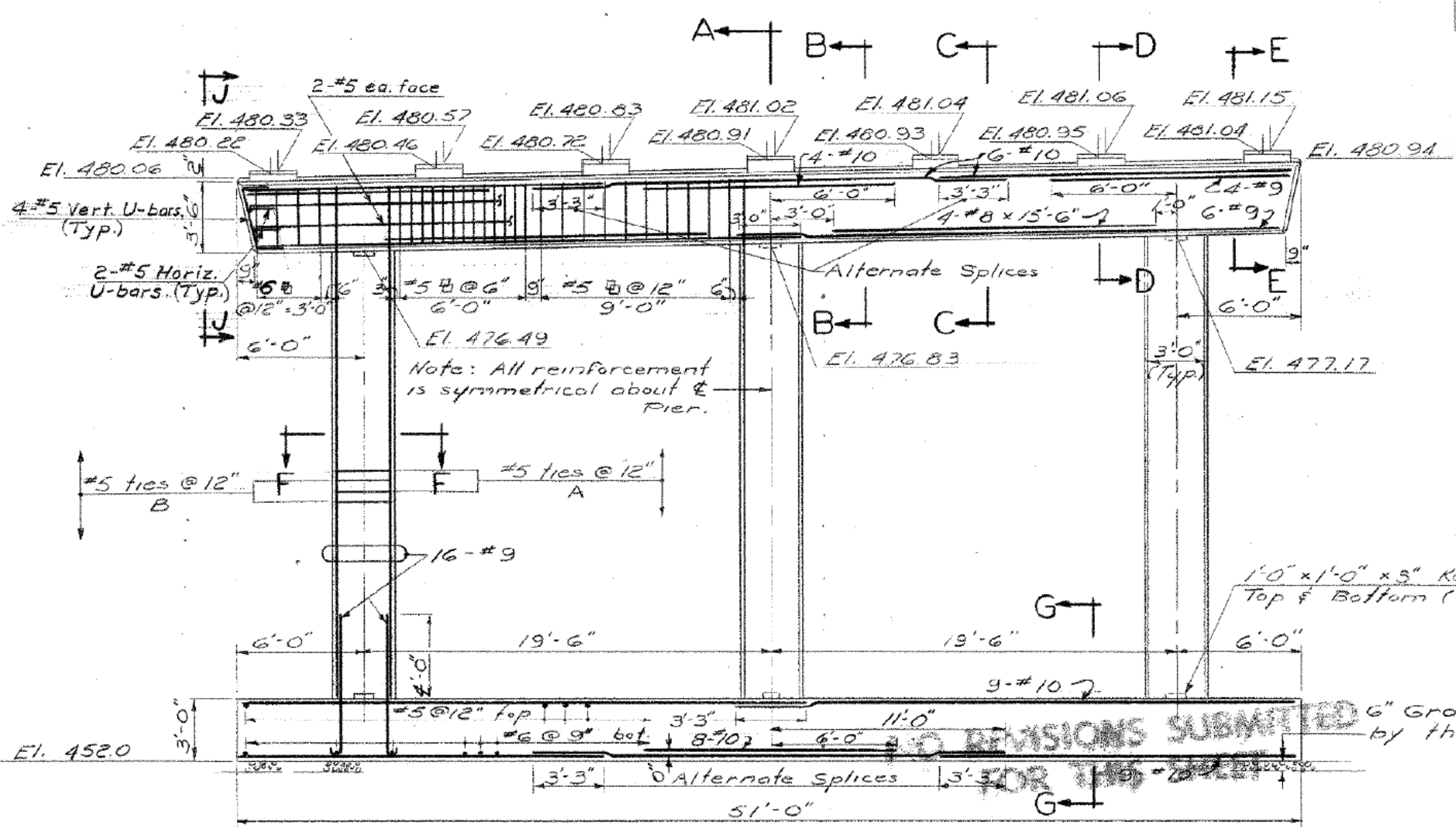
DRAWING NO.:  
**FIO-04**  
SHEET NO.: 07.04



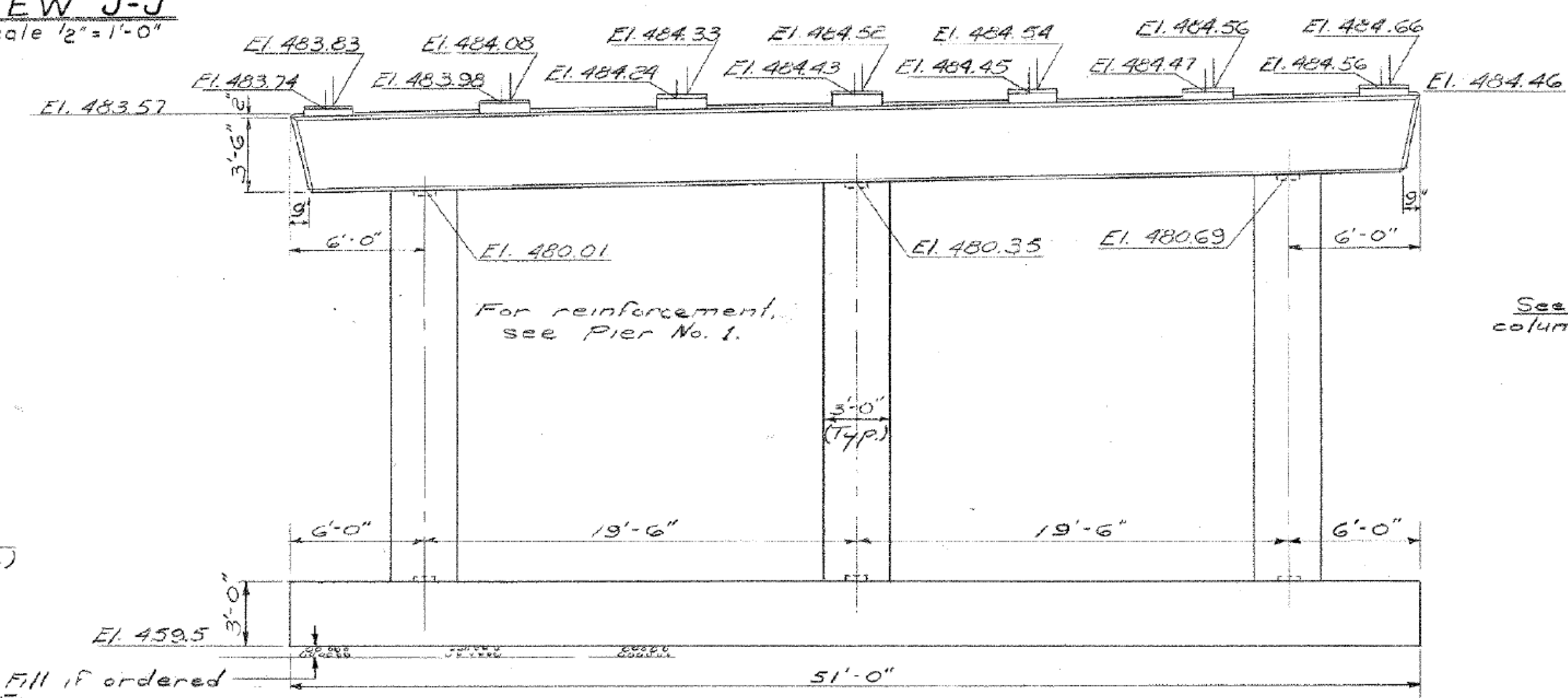
PLAN - CAP BEAM  
Scale - 3/8" = 1'-0"

PLAN - CAP BEAM  
Scale - 3/8" = 1'-0"

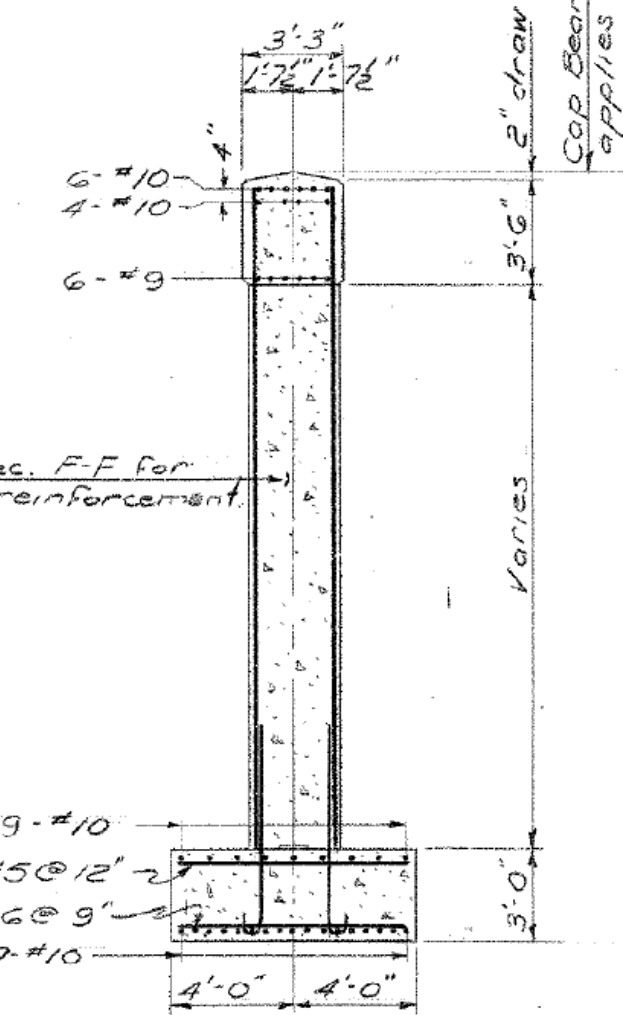
VIEW J-J  
Scale 1/2" = 1'-0"



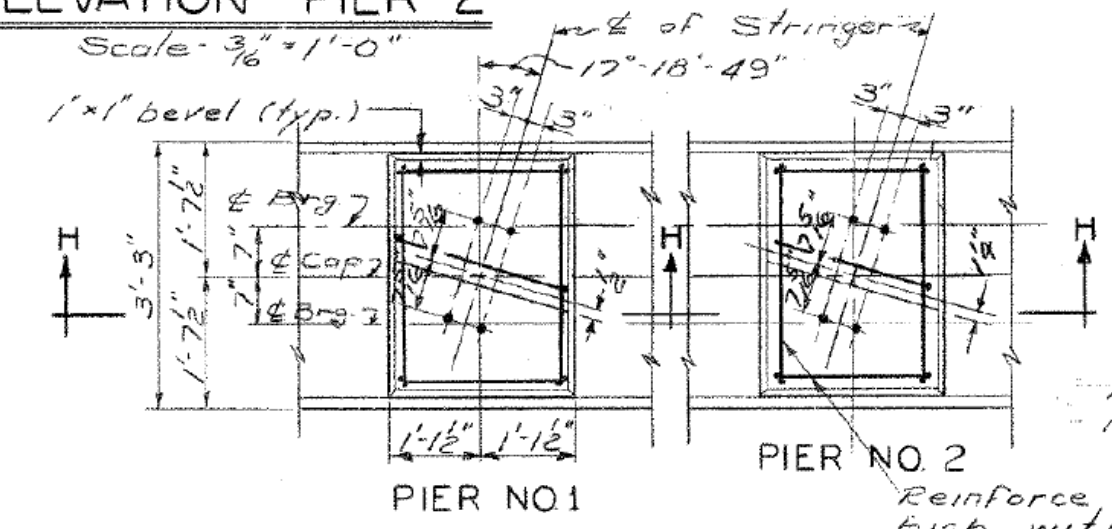
ELEVATION - PIER 1  
Scale - 3/8" = 1'-0"



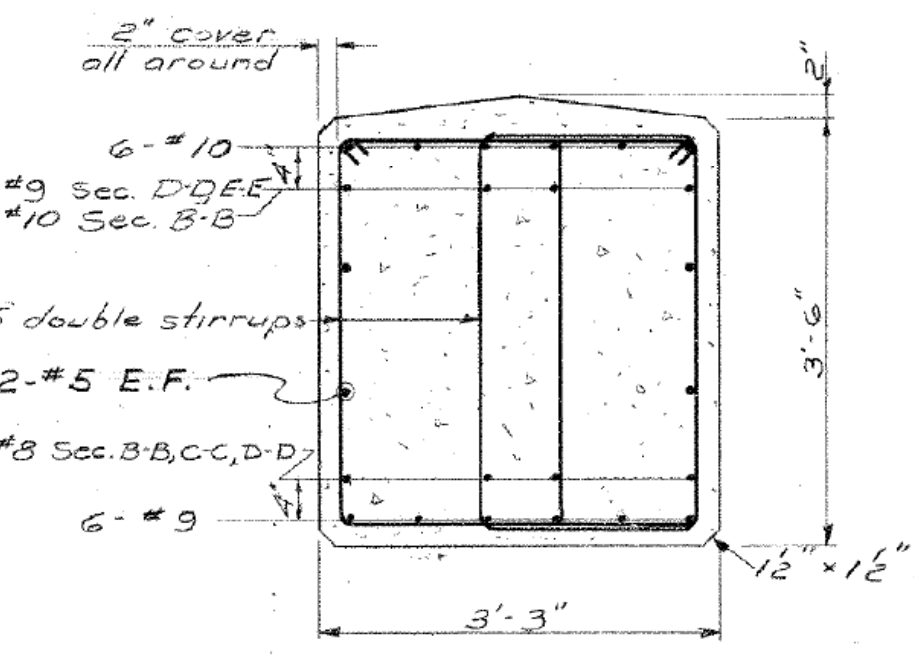
ELEVATION - PIER 2  
Scale - 3/8" = 1'-0"



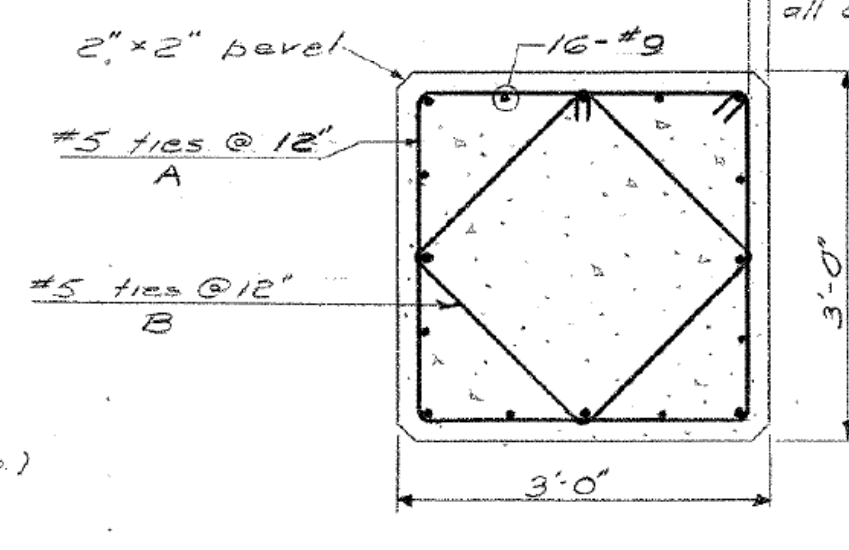
SECTION A-A  
Scale - 3/8" = 1'-0"



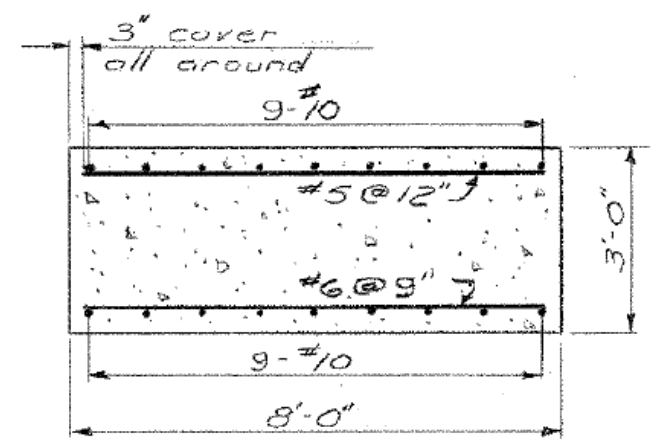
SECTION H-H  
PAD DETAILS  
Scale - 1/2" = 1'-0"



SECTION B-B, C-C, D-D & E-E  
Scale - 3/4" = 1'-0"



SECTION F-F  
Scale - 3/4" = 1'-0"



SECTION G-G  
Scale - 3/4" = 1'-0"

NO REVISIONS SUBMITTED FOR THIS SHEET

Design Foundation Pressure = 1.6 TSF (Group I)  
Max. Design Foundation Pressure = 2.0 TSF (Group III)

Anchor Bolts to be set at the time of placing concrete for Pier Cap Beam.  
Reinforce pads over 6" high with 5-#5 P.

CONNECTICUT  
STATE HIGHWAY DEPARTMENT  
TOWN OF THOMPSON  
ROUTE 52  
N.B. & S.B. ROADWAYS  
UNDER  
ROUTE 200  
PIERS

REVISIONS	
NO.	DESCRIPTION

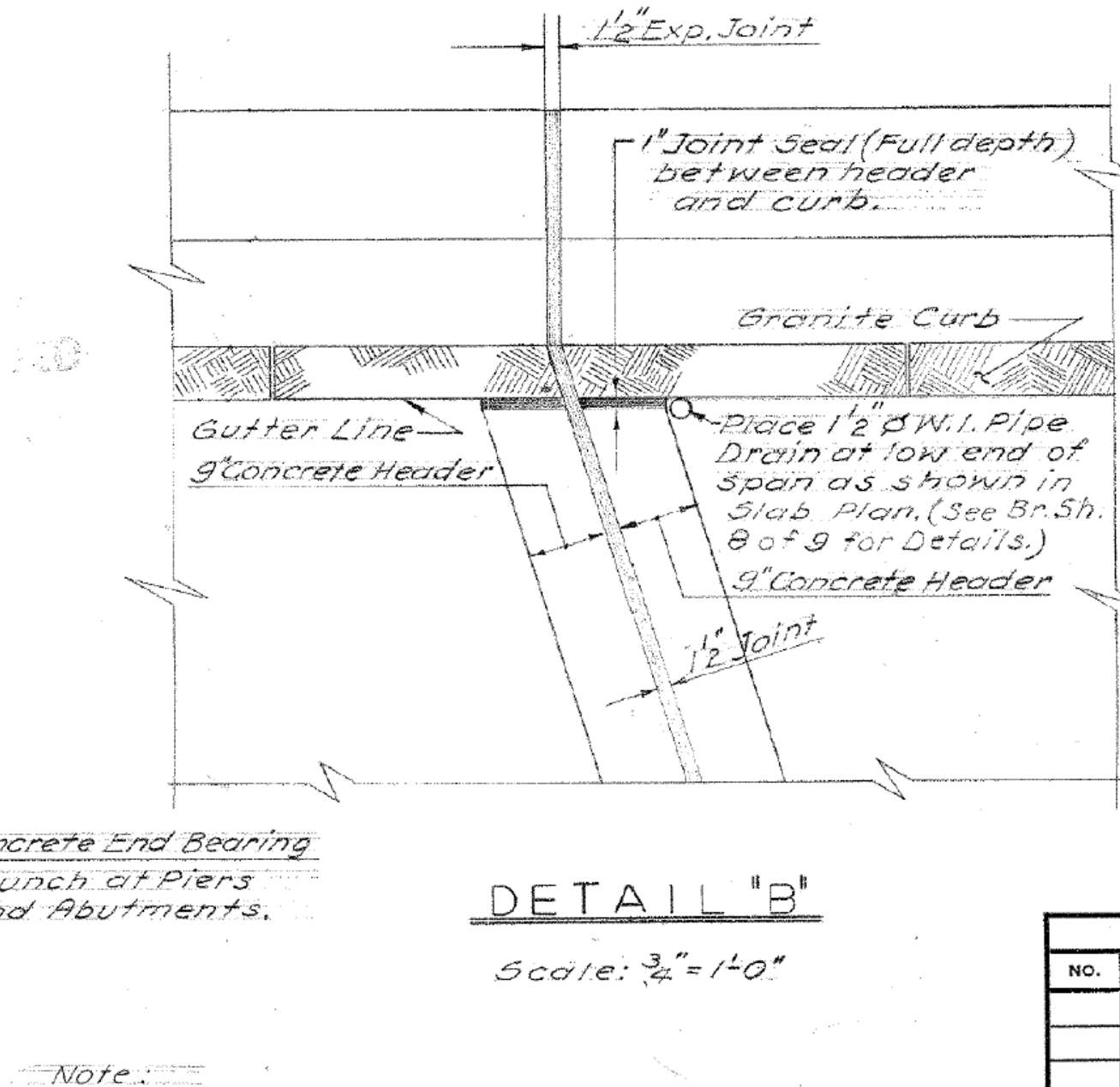
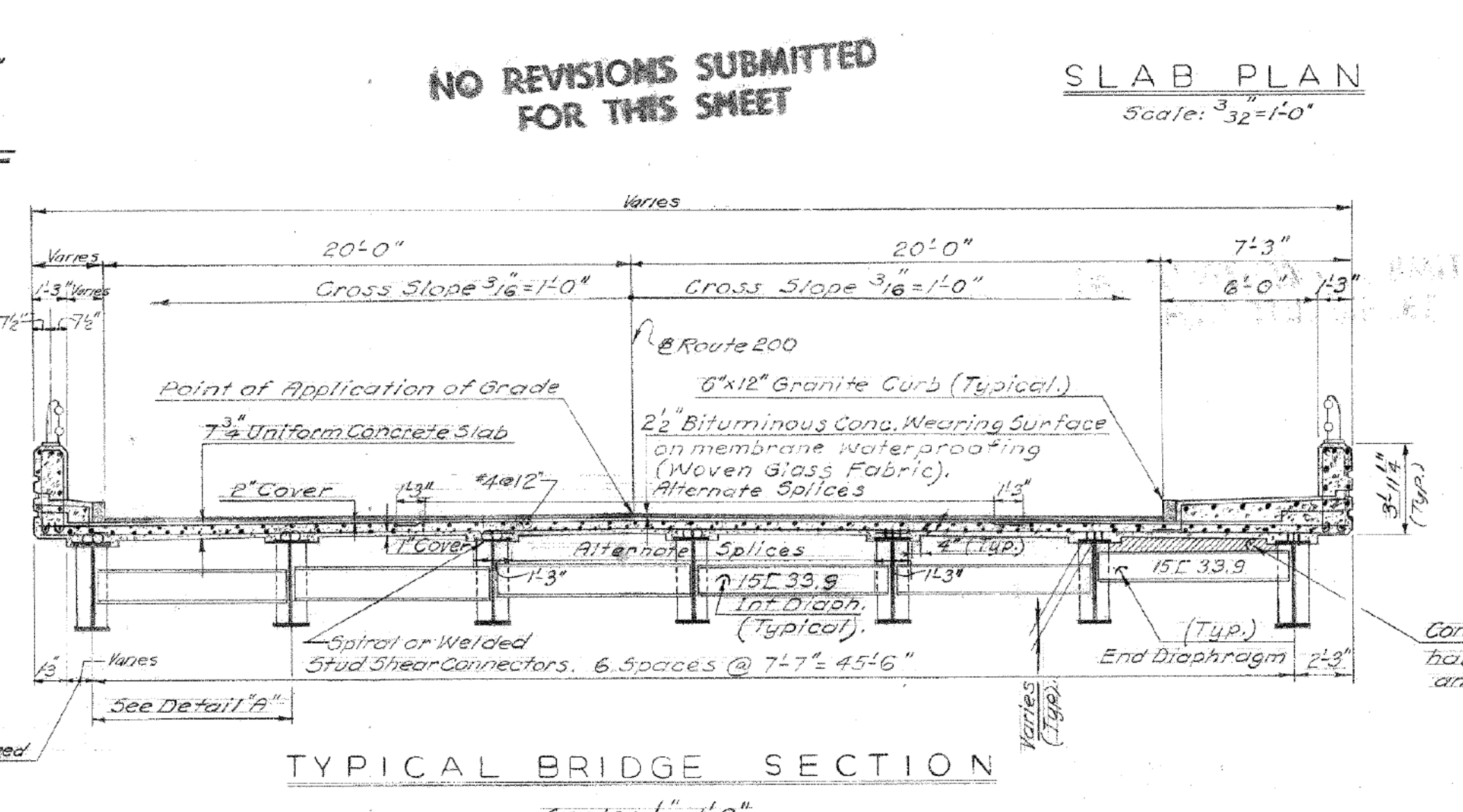
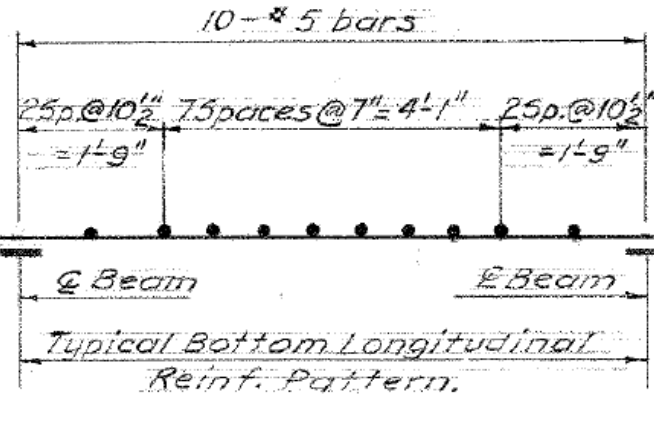
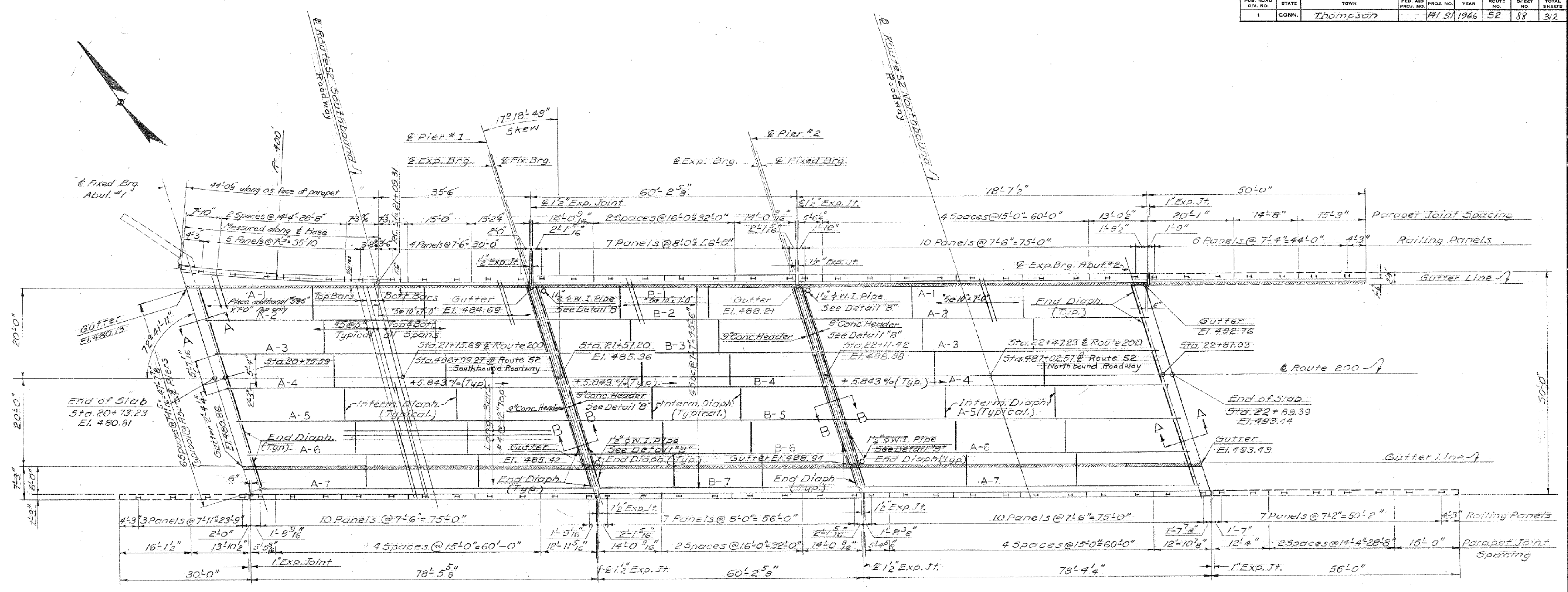
DESIGNED BY: R.E.S.  
MADE BY: J.K.G. DATE: 6-18-63  
CHECKED BY: W.F.D. DATE: 7-17-63  
APPROVED: E.J. Keany DATE: 8-16-65

M 358 01

87

FOR INFORMATION ONLY

DESIGNER/DRAFTER: BPC	CHECKED BY: DJL	PROJECT TITLE: REPLACEMENT OF BRIDGE No. 03474, ROUTE 200 OVER INTERSTATE 395	TOWN(S): TOWN OF THOMPSON	DRAWING TITLE: EXISTING BRIDGE - PIERS	PROJECT NO.: 0141-0158	DRAWING NO.: FIO-05
-----------------------	-----------------	--	------------------------------	---	---------------------------	------------------------



**NOTE:**  
 See Bridge Sheet No. 8 of 9 for sections A-A, B-B, and additional Slab Details.  
 For Railing details see Bridge Sheet No. 9 of 9.  
 For Beam and Diaphragm details see Bridge Sheet No. 9.  
 Elevations shown apply at top of the 2" Bituminous conc. Wearing Surface.

CONNECTICUT STATE HIGHWAY DEPARTMENT	
TOWN OF THOMPSON	
ROUTE 52	
N.B. & S.B. ROADWAYS UNDER	
ROUTE 200	
SUPERSTRUCTURE	
DESIGNED BY: R.E.S.	PROJECT NO. 141-91-030
SCALES: As Noted	MADE BY: G.O.K. DATE: 3.28.66
CHECKED BY: W.F.D. DATE: 7.17.63	BRIDGE SHEET NO. 16 of 9
APPROVED: [Signature]	

REVISIONS

NO.	DATE	DESCRIPTION

REV.	DATE	REVISION DESCRIPTION

**FOR INFORMATION ONLY**

SIGNATURE BLOCK: **M**  
 MOTT MACDONALD  
 175 CAPITAL BLVD  
 4TH FLOOR  
 ROCKY HILL, CT 06067

NOT TO SCALE



PROJECT TITLE:  
**REPLACEMENT OF BRIDGE No. 03474, ROUTE 200 OVER INTERSTATE 395**

TOWN(S):  
**TOWN OF THOMPSON**

DRAWING TITLE:  
**EXISTING BRIDGE - SUPERSTRUCTURE**

PROJECT NO.: **0141-0158**

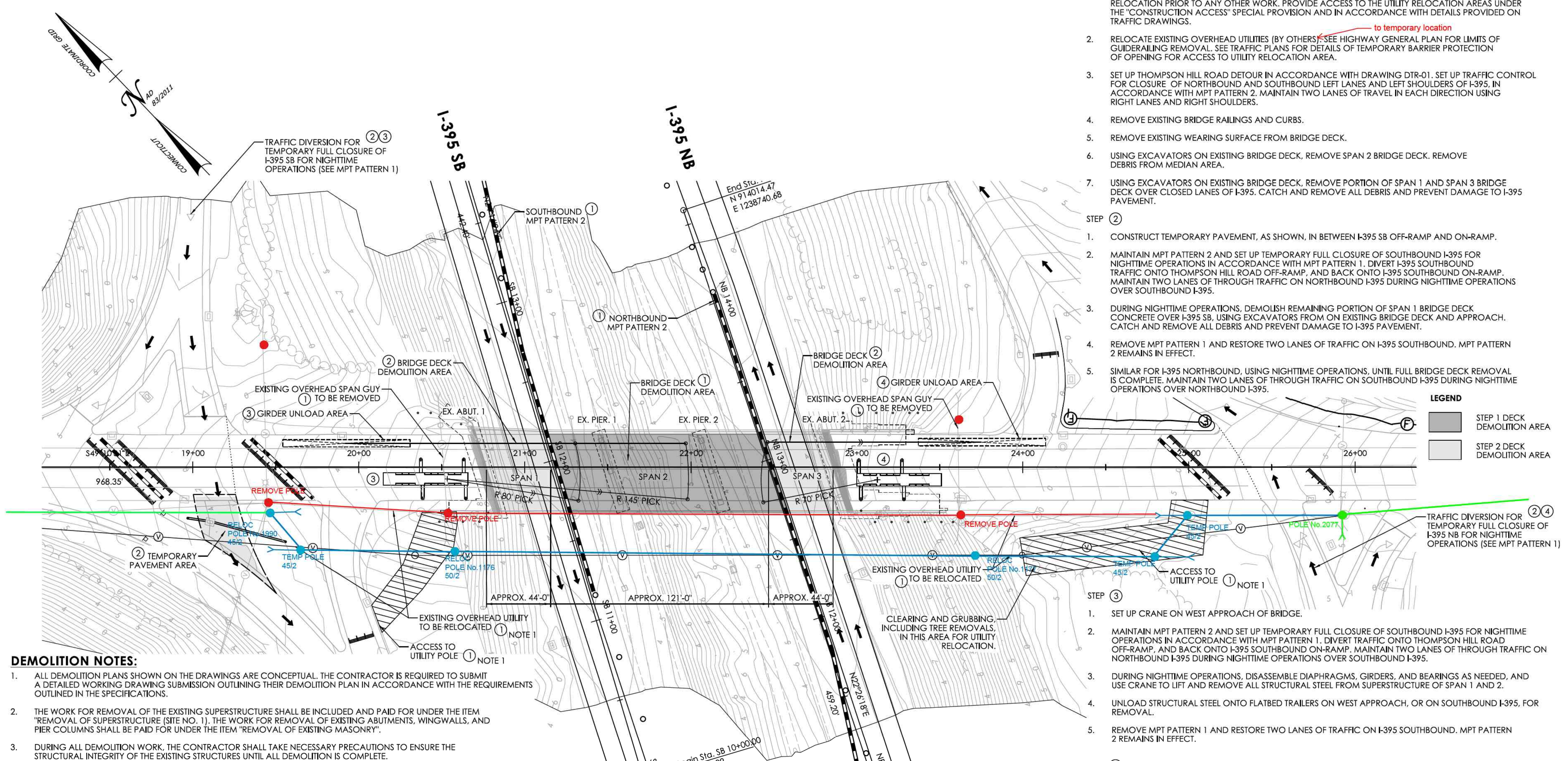
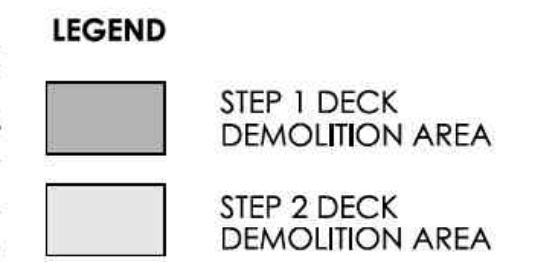
DRAWING NO.: **FIO-06**

SHEET NO.: **07.06**

# Temporary 1st Stage

## SUGGESTED CONSTRUCTION SEQUENCE OF SUPERSTRUCTURE REMOVAL

- STEP ①**
- PERFORM CLEARING AND GRUBBING AND THE INSTALLATION OF ACCESS ROADS FOR TEMPORARY UTILITY RELOCATION PRIOR TO ANY OTHER WORK. PROVIDE ACCESS TO THE UTILITY RELOCATION AREAS UNDER THE "CONSTRUCTION ACCESS" SPECIAL PROVISION AND IN ACCORDANCE WITH DETAILS PROVIDED ON TRAFFIC DRAWINGS.
  - RELOCATE EXISTING OVERHEAD UTILITIES (BY OTHERS) <sup>to temporary location</sup> SEE HIGHWAY GENERAL PLAN FOR LIMITS OF GUIDERAILING REMOVAL. SEE TRAFFIC PLANS FOR DETAILS OF TEMPORARY BARRIER PROTECTION OF OPENING FOR ACCESS TO UTILITY RELOCATION AREA.
  - SET UP THOMPSON HILL ROAD DETOUR IN ACCORDANCE WITH DRAWING DTR-01. SET UP TRAFFIC CONTROL FOR CLOSURE OF NORTHBOUND AND SOUTHBOUND LEFT LANES AND LEFT SHOULDERS OF I-395. IN ACCORDANCE WITH MPT PATTERN 2. MAINTAIN TWO LANES OF TRAVEL IN EACH DIRECTION USING RIGHT LANES AND RIGHT SHOULDERS.
  - REMOVE EXISTING BRIDGE RAILINGS AND CURBS.
  - REMOVE EXISTING WEARING SURFACE FROM BRIDGE DECK.
  - USING EXCAVATORS ON EXISTING BRIDGE DECK, REMOVE SPAN 2 BRIDGE DECK. REMOVE DEBRIS FROM MEDIAN AREA.
  - USING EXCAVATORS ON EXISTING BRIDGE DECK, REMOVE PORTION OF SPAN 1 AND SPAN 3 BRIDGE DECK OVER CLOSED LANES OF I-395. CATCH AND REMOVE ALL DEBRIS AND PREVENT DAMAGE TO I-395 PAVEMENT.
- STEP ②**
- CONSTRUCT TEMPORARY PAVEMENT, AS SHOWN, IN BETWEEN I-395 SB OFF-RAMP AND ON-RAMP.
  - MAINTAIN MPT PATTERN 2 AND SET UP TEMPORARY FULL CLOSURE OF SOUTHBOUND I-395 FOR NIGHTTIME OPERATIONS IN ACCORDANCE WITH MPT PATTERN 1. DIVERT I-395 SOUTHBOUND TRAFFIC ONTO THOMPSON HILL ROAD OFF-RAMP, AND BACK ONTO I-395 SOUTHBOUND ON-RAMP. MAINTAIN TWO LANES OF THROUGH TRAFFIC ON NORTHBOUND I-395 DURING NIGHTTIME OPERATIONS OVER SOUTHBOUND I-395.
  - DURING NIGHTTIME OPERATIONS, DEMOLISH REMAINING PORTION OF SPAN 1 BRIDGE DECK CONCRETE OVER I-395 SB, USING EXCAVATORS FROM ON EXISTING BRIDGE DECK AND APPROACH. CATCH AND REMOVE ALL DEBRIS AND PREVENT DAMAGE TO I-395 PAVEMENT.
  - REMOVE MPT PATTERN 1 AND RESTORE TWO LANES OF TRAFFIC ON I-395 SOUTHBOUND. MPT PATTERN 2 REMAINS IN EFFECT.
  - SIMILAR FOR I-395 NORTHBOUND, USING NIGHTTIME OPERATIONS, UNTIL FULL BRIDGE DECK REMOVAL IS COMPLETE. MAINTAIN TWO LANES OF THROUGH TRAFFIC ON SOUTHBOUND I-395 DURING NIGHTTIME OPERATIONS OVER NORTHBOUND I-395.
- STEP ③**
- SET UP CRANE ON WEST APPROACH OF BRIDGE.
  - MAINTAIN MPT PATTERN 2 AND SET UP TEMPORARY FULL CLOSURE OF SOUTHBOUND I-395 FOR NIGHTTIME OPERATIONS IN ACCORDANCE WITH MPT PATTERN 1. DIVERT TRAFFIC ONTO THOMPSON HILL ROAD OFF-RAMP, AND BACK ONTO I-395 SOUTHBOUND ON-RAMP. MAINTAIN TWO LANES OF THROUGH TRAFFIC ON NORTHBOUND I-395 DURING NIGHTTIME OPERATIONS OVER SOUTHBOUND I-395.
  - DURING NIGHTTIME OPERATIONS, DISASSEMBLE DIAPHRAGMS, GIRDERS, AND BEARINGS AS NEEDED, AND USE CRANE TO LIFT AND REMOVE ALL STRUCTURAL STEEL FROM SUPERSTRUCTURE OF SPAN 1 AND 2.
  - UNLOAD STRUCTURAL STEEL ONTO FLATBED TRAILERS ON WEST APPROACH, OR ON SOUTHBOUND I-395, FOR REMOVAL.
  - REMOVE MPT PATTERN 1 AND RESTORE TWO LANES OF TRAFFIC ON I-395 SOUTHBOUND. MPT PATTERN 2 REMAINS IN EFFECT.
- STEP ④**
- SET UP CRANE ON EAST APPROACH OF BRIDGE.
  - MAINTAIN MPT PATTERN 2 AND SET UP TEMPORARY FULL CLOSURE OF NORTHBOUND I-395 FOR NIGHTTIME OPERATIONS IN ACCORDANCE WITH MPT PATTERN 1. DIVERT TRAFFIC ONTO THOMPSON HILL ROAD OFF-RAMP, AND BACK ONTO I-395 NORTHBOUND ON-RAMP. MAINTAIN TWO LANES OF THROUGH TRAFFIC ON SOUTHBOUND I-395 DURING NIGHTTIME OPERATIONS OVER NORTHBOUND I-395.
  - DURING NIGHTTIME OPERATIONS, DISASSEMBLE DIAPHRAGMS, GIRDERS, AND BEARINGS AS NEEDED, AND USE CRANE TO LIFT AND REMOVE ALL STRUCTURAL STEEL FROM SUPERSTRUCTURE OF SPAN 3.
  - UNLOAD STRUCTURAL STEEL ONTO FLATBED TRAILERS ON EAST APPROACH, OR ON NORTHBOUND I-395, FOR REMOVAL.
  - REMOVE MPT PATTERN 1 AND RESTORE TWO LANES OF TRAFFIC ON I-395 NORTHBOUND. MPT PATTERN 2 REMAINS IN EFFECT.



**STAGE 1 - SUPERSTRUCTURE DEMOLITION PLAN**  
SCALE: 1" = 30'

**DEMOLITION NOTES:**

- ALL DEMOLITION PLANS SHOWN ON THE DRAWINGS ARE CONCEPTUAL. THE CONTRACTOR IS REQUIRED TO SUBMIT A DETAILED WORKING DRAWING SUBMISSION OUTLINING THEIR DEMOLITION PLAN IN ACCORDANCE WITH THE REQUIREMENTS OUTLINED IN THE SPECIFICATIONS.
- THE WORK FOR REMOVAL OF THE EXISTING SUPERSTRUCTURE SHALL BE INCLUDED AND PAID FOR UNDER THE ITEM "REMOVAL OF SUPERSTRUCTURE (SITE NO. 1)". THE WORK FOR REMOVAL OF EXISTING ABUTMENTS, WINGWALLS, AND PIER COLUMNS SHALL BE PAID FOR UNDER THE ITEM "REMOVAL OF EXISTING MASONRY".
- DURING ALL DEMOLITION WORK, THE CONTRACTOR SHALL TAKE NECESSARY PRECAUTIONS TO ENSURE THE STRUCTURAL INTEGRITY OF THE EXISTING STRUCTURES UNTIL ALL DEMOLITION IS COMPLETE.
- ALL MATERIALS RELATED TO DEMOLITION SHALL BECOME PROPERTY OF THE CONTRACTOR. THE CONTRACTOR SHALL REMOVE ALL MATERIAL FROM THE JOB SITE AND LEGALLY DISPOSE OF IT. THE METHOD OF DEBRIS REMOVAL, TRANSPORTATION AND DISPOSAL SHALL BE APPROVED BY THE ENGINEER.
- ALL DEMOLITION WORK SHALL BE DONE IN ACCORDANCE WITH THE SPECIFICATIONS AND THE SPECIAL PROVISION "PROSECUTION AND PROGRESS".
- THE CONTRACTOR SHALL TAKE PRECAUTIONS TO ENSURE THAT NO DEBRIS WILL FALL ON I-395 DURING DEMOLITION.
- CONCRETE FOR THE SUPERSTRUCTURE AND SUBSTRUCTURE SHALL BE REMOVED BY CUTTING, SPLITTING OR IMPACT HAMMER METHODS. BLASTING WILL NOT BE ALLOWED.
- THE CONTRACTOR SHALL REMOVE THE SUBSTRUCTURES IN THEIR ENTIRETY.
- TRAFFIC CLOSURES ON ROUTE 200 AND I-395 SHALL BE IN ACCORDANCE WITH THE MAINTENANCE AND PROTECTION OF TRAFFIC PLANS AND IN ACCORDANCE WITH THE SPECIAL PROVISIONS.
- THE PROJECT SITE IS LOCATED IN A RURAL AND RESIDENTIAL AREA ALONG I-395. THERE ARE SEVERAL OPEN SPACE AREAS BETWEEN THE RAMPS AND THE MAINLINE; ON THOMPSON HILL RD. APPROACHES; AND IN THE MEDIAN BETWEEN I-395NB AND I-395SB, WHICH MAY SERVE AS STAGING, LAYDOWN, AND PARKING AREAS.

**ANTICIPATED MAXIMUM LOADS DURING DEMOLITION FOR EACH SPAN:**

SECTION	WEIGHT (LBS)	RADIUS (FT.)
SPAN 1	18,670	80'-0"
SPAN 2	11,137	145'-0"
SPAN 3	18,670	70'-0"

NOTES:  
THE WEIGHTS NOTED HERE INCLUDE WEIGHT OF STEEL GIRDERS ONLY.

**FOR INFORMATION ONLY**

SIGNATURE BLOCK: **M** MOTT MACDONALD  
175 CAPITAL BLVD  
4TH FLOOR  
ROCKY HILL, CT 06067

DESIGNER/DRAFTER: BPC CHECKED BY: DJL

NOT TO SCALE

CONNECTICUT DEPARTMENT OF TRANSPORTATION

PROJECT TITLE: **REPLACEMENT OF BRIDGE No. 03474, ROUTE 200 OVER INTERSTATE 395**

TOWN(S): **TOWN OF THOMPSON**

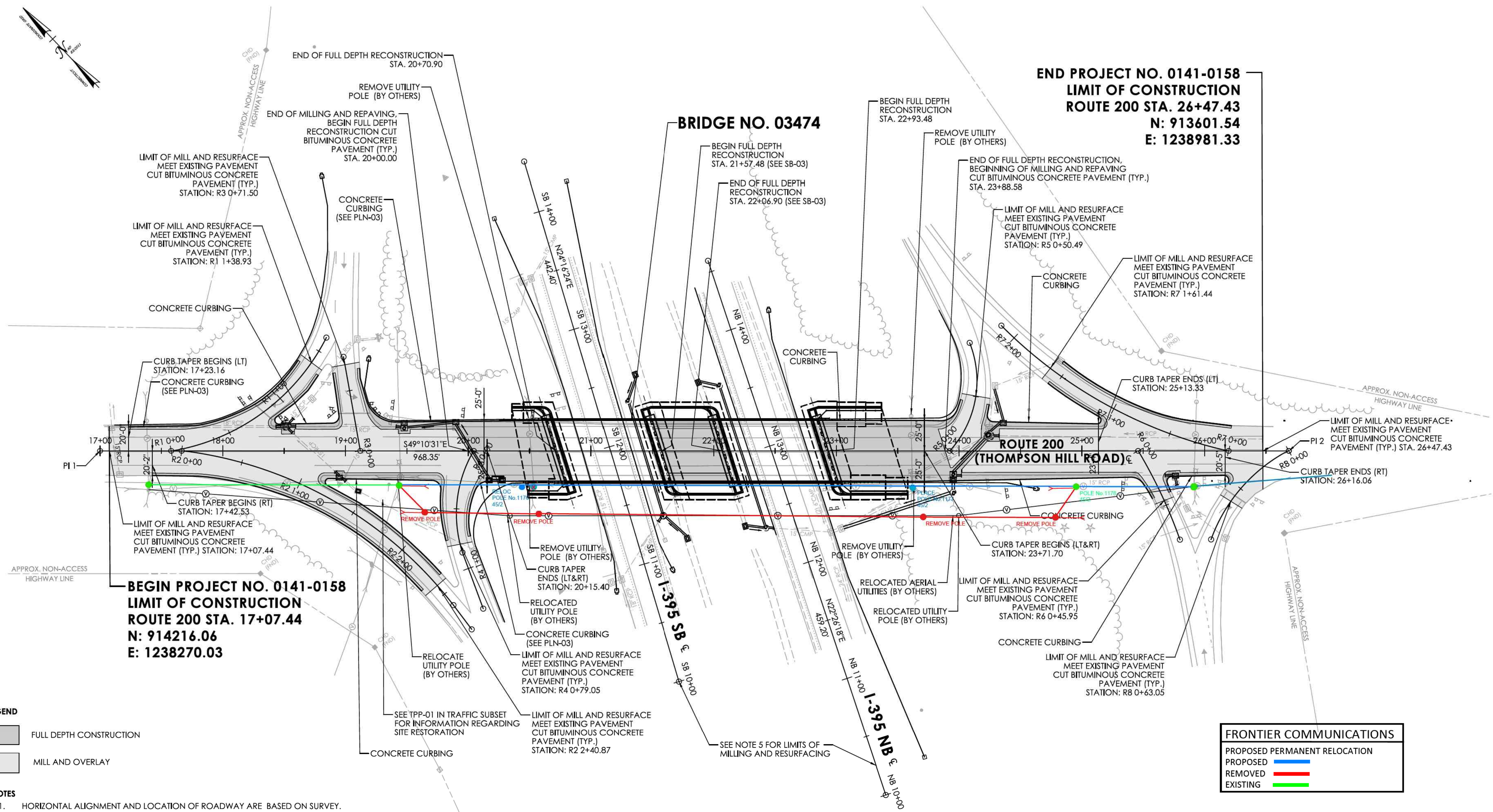
DRAWING TITLE: **FRONTIER - TEMPORARY FIRST STAGE**

PROJECT NO.: **0141-0158**

DRAWING NO.: **FIO-07**

SHEET NO.: **07.07**

# Permanent 2nd Stage



**LEGEND**

- FULL DEPTH CONSTRUCTION
- MILL AND OVERLAY

**NOTES**

1. HORIZONTAL ALIGNMENT AND LOCATION OF ROADWAY ARE BASED ON SURVEY.
2. CATCH BASINS WITHIN THE PROJECT LIMITS THAT ARE IMPACTED BY CONSTRUCTION AND/OR MILL AND OVERLAY OPERATIONS WILL BE ADJUSTED AS PER THE DRAINAGE SHEETS.
3. FOR CURB DETAILS REFER TO PLN-03.
4. FOR METAL BEAM RAIL DETAILS REFER TO PLN-04.
5. REFER TO MAINTENANCE & PROTECTION OF TRAFFIC - PATTERN 2 PLANS (MPT-08 - MPT-11) FOR DETAILS REGARDING THE LIMITS OF MILLING AND RESURFACING ON I-395.

**FRONTIER COMMUNICATIONS**

- PROPOSED PERMANENT RELOCATION —
- PROPOSED —
- REMOVED —
- EXISTING —

REV.	DATE	REVISION DESCRIPTION

**FOR INFORMATION ONLY**

SIGNATURE BLOCK: <b>M</b> <b>MOTT MACDONALD</b> 175 CAPITAL BLVD 4TH FLOOR ROCKY HILL, CT 06067 DESIGNER/DRAFTER: BPC CHECKED BY: DJL	NOT TO SCALE	 <b>CONNECTICUT DEPARTMENT OF TRANSPORTATION</b>	PROJECT TITLE: <b>REPLACEMENT OF BRIDGE No. 03474, ROUTE 200 OVER INTERSTATE 395</b>	TOWN(S): <b>TOWN OF THOMPSON</b>	DRAWING TITLE: <b>FRONTIER - PERMANENT SECOND STAGE</b>	PROJECT NO.: <b>0141-0158</b>	DRAWING NO.: <b>FIO-08</b> SHEET NO.: 07.08
---	--------------	---	---	-------------------------------------	--	----------------------------------	--