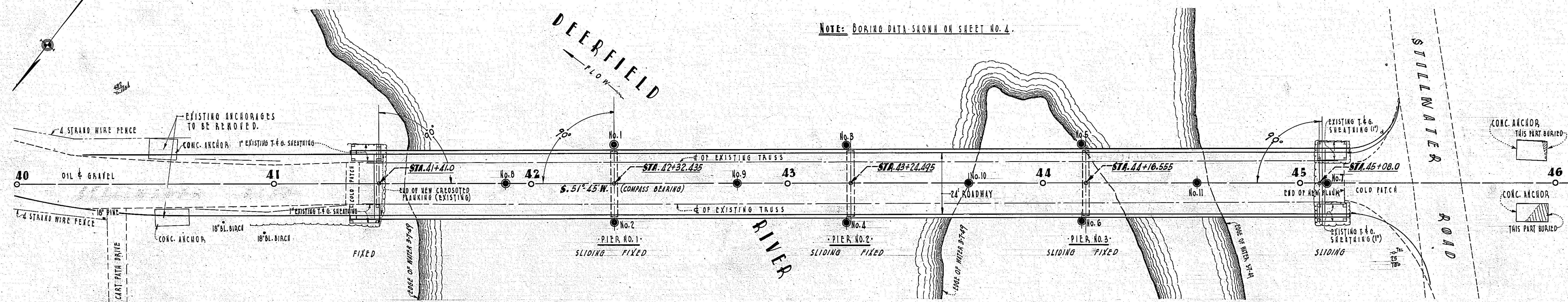


PUB. ROAD DIV. NO.	STATE	FED. AID PROJ. NO.	FISCAL YEAR	SHEET NO.	TOTAL SHEETS
1	MASS.	P.A.S. 880	1949	5	24



KEY PLAN  
SCALE: 1" = 20'-0"

GENERAL NOTES

**FOUNDATIONS:**  
MAY BE ALTERED, IF NECESSARY, TO SUIT CONDITIONS OF CONSTRUCTION.

**DATE:**  
TO BE PLACED IN CENTRE OF INSIDE FACE OF NORTHEASTERLY & SOUTHWESTERLY END POSTS. A SHEET SHOWING SIZE AND CHARACTER OF NUMERALS WILL BE FURNISHED. FOR ARRANGEMENT SEE SHEET NO. 4.

**DESIGN:**  
ACCORDING TO SPECIFICATIONS OF THE AMERICAN ASSOCIATION OF STATE HIGHWAY OFFICIALS (1949 ED.) FOR H-20 LOADING.

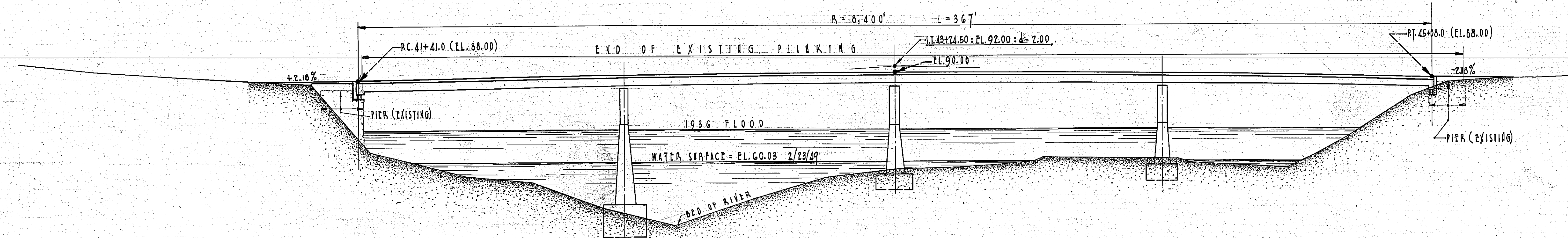
**BENCHMARK:**  
STA. 40+07 RT.-48', HIGH POINT, D.H. IN LEDGE, EL. 100.00 (ASSUMED).

**CONCRETE:**  
ALL CONCRETE TO BE CLASS 'A'.

ESTIMATED QUANTITIES

NOT GUARANTEED

UNCLASSIFIED EXCAVATION	440 CU. YDS.
CLASS 'B' ROCK EXCAVATION	60 CU. YDS.
GRAVEL BORROW	30 CU. YDS.
STEEL SHEETING (FOR PIERS #2 & #3)	53,300 POUNDS
CLASS 'A' CEM. CONC. MASONRY	1,250 CU. YDS.
SPIRAL REINFORCEMENT	2,400 POUNDS
STEEL REINFORCEMENT FOR STRUCTURES	81,000 POUNDS
STRUCTURAL STEEL	495,000 POUNDS
METAL BRIDGE RAILING	766 LIN. FT.
REMOVAL OF EXISTING SUPERSTRUCTURE	1 LUMP SUM
STONE MASONRY WALLS (R.F.R. IN CEM. MORTAR)	25 CU. YDS.
COFFER DAM FOR PIER NO. 1	1 LUMP SUM
STEEL SHEETING FOR PIER NO. 1	37,000 POUNDS



PROFILE  
SCALES: HORIZ. & VERT. = 1" = 20'-0"

ADVERTISING 11-26-49 CONSTRUCTION 11-26-49

THE COMMONWEALTH OF MASSACHUSETTS  
PROPOSED BRIDGE  
**-DEERFIELD-**  
STILLWATER BRIDGE  
OVER DEERFIELD RIVER

SCALES AS NOTED

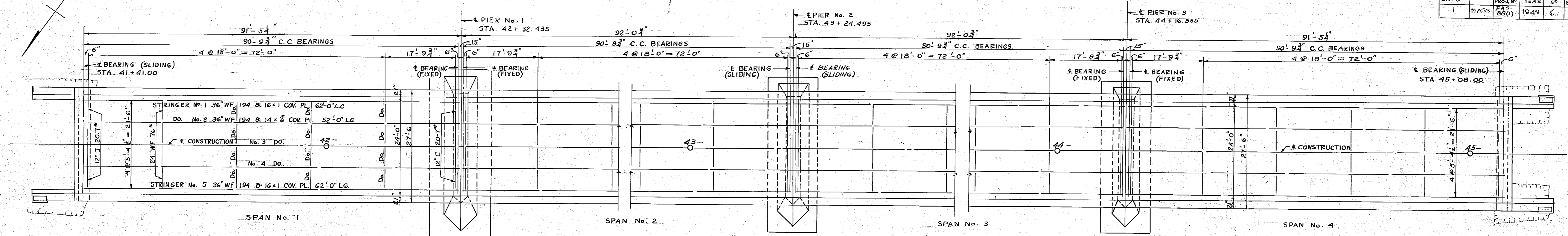
OFFICE OF  
DEPARTMENT OF PUBLIC WORKS  
100 NASSAU ST. - BOSTON, MASS.  
NOVEMBER 1949

R.O. Spillane  
BRIDGE ENGINEER

P.R. Foster  
CHIEF ENGINEER

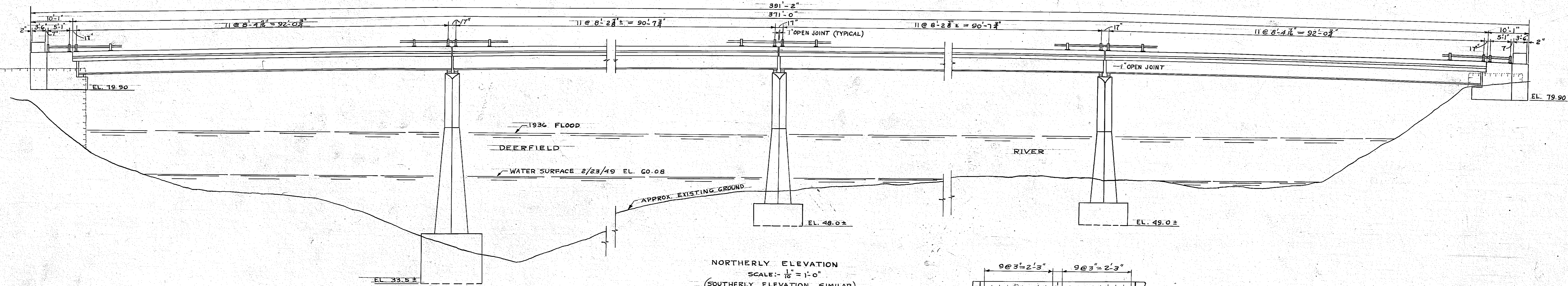
DESIGNED BY L.F.R. TRACED BY C.J.M. CHECKED BY M.J.M.

DIST. ROAD DIV. NO.	STATE	FED. AID PROJ. NO.	FISCAL YEAR	SHEET NO.	TOTAL SHEETS
1	MASS	FA3 88(1)	1949	6	24

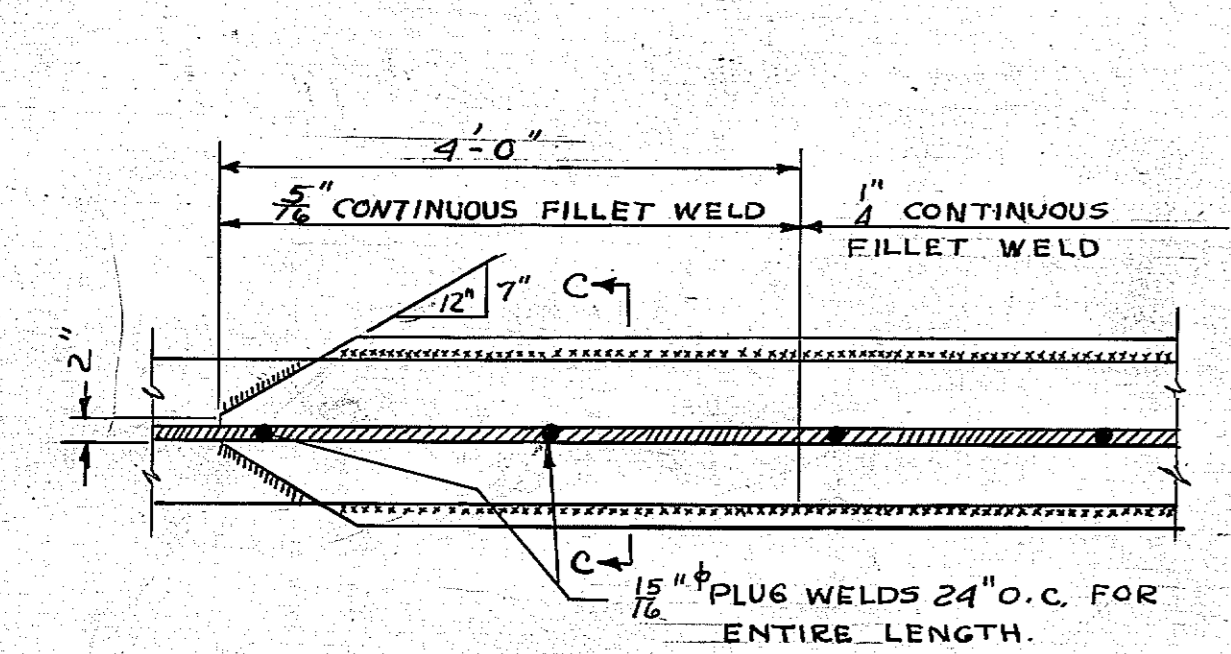


PLAN  
SCALE: 1/16" = 1'-0"

NOTE: ALL SPANS TO BE THE SAME EXCEPT AS SHOWN.  
ALL RIVETS 7/8" ALL HOLES 1 1/2" EX. AS SHOWN.  
ALL STRINGERS TO BE CAMBERED.  
COLOR COAT TO BE STRUCTURAL GREEN.



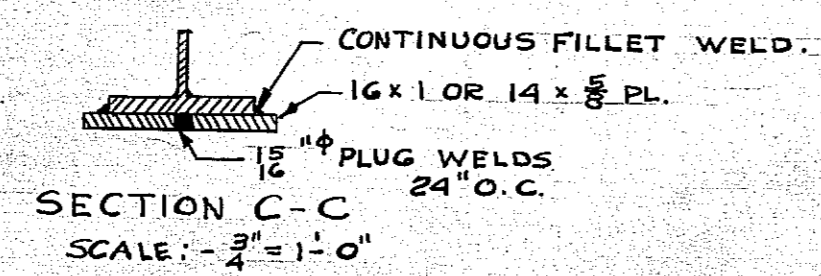
NORTHERLY ELEVATION  
SCALE: 1/16" = 1'-0"  
(SOUTHERLY ELEVATION SIMILAR)



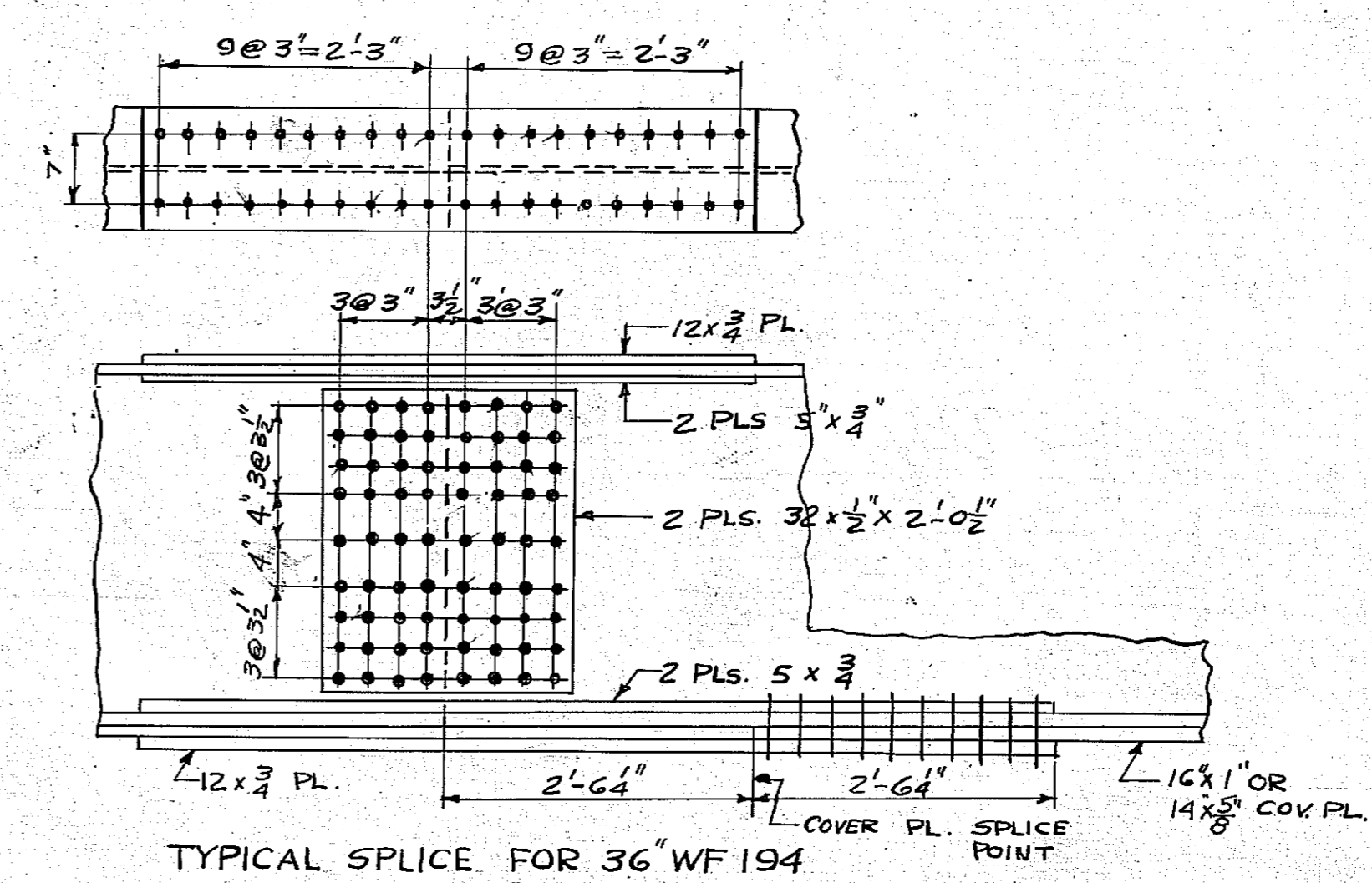
4" MEAN DIAMETER OF 1/2" SPIRAL COIL  
4x1/2" WELDS, F.S. AND N.S. AT EVERY POINT OF CONTACT.  
NOTE: SPIRAL COIL TO HAVE A 6" PITCH IN END QUARTER OF SPANS ELSEWHERE PITCH TO BE 12". ALL COILS TO EXTEND FROM 1/2 BEARING TO 1/2 BEARING

DETAIL OF CONNECTION OF SPIRAL COIL TO STEEL BEAM  
SCALE: 1" = 1'-0"

BOTTOM FLANGE COVER PLATE  
SCALE: 3/4" = 1'-0"  
(TYPICAL FOR ALL COVER PLS.)



SECTION C-C  
SCALE: 3/4" = 1'-0"

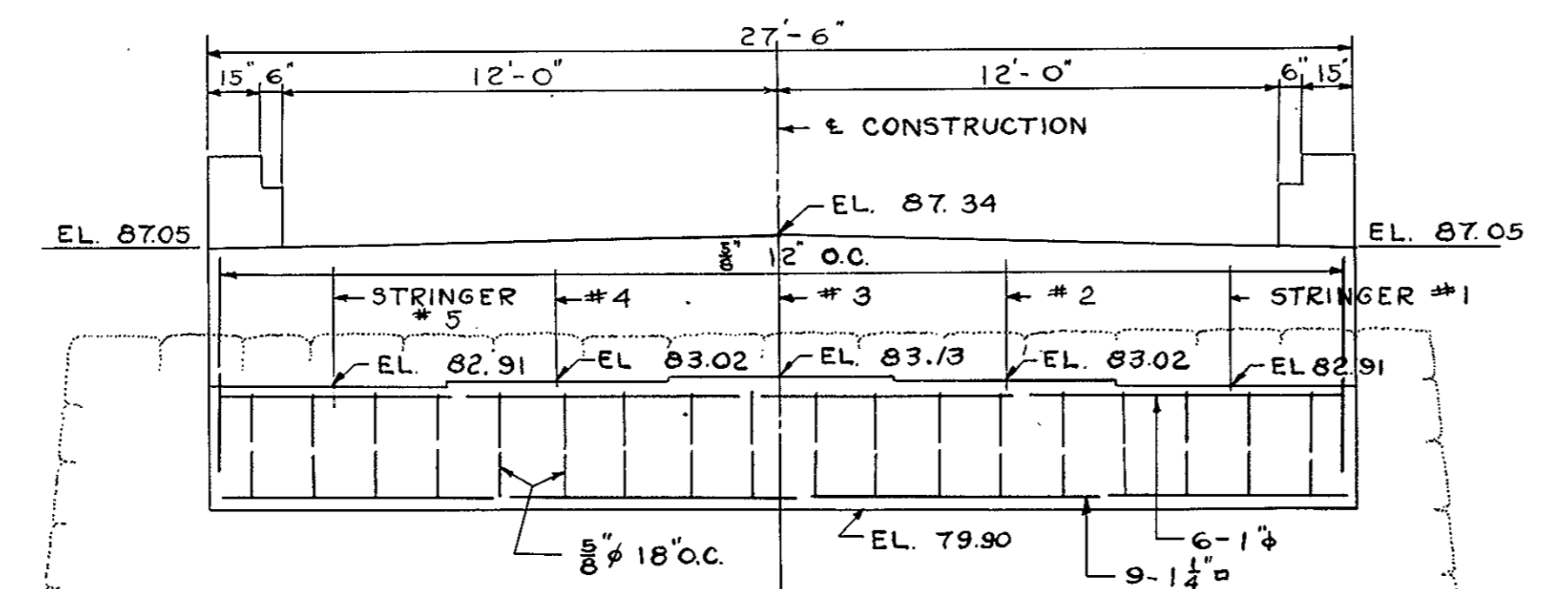
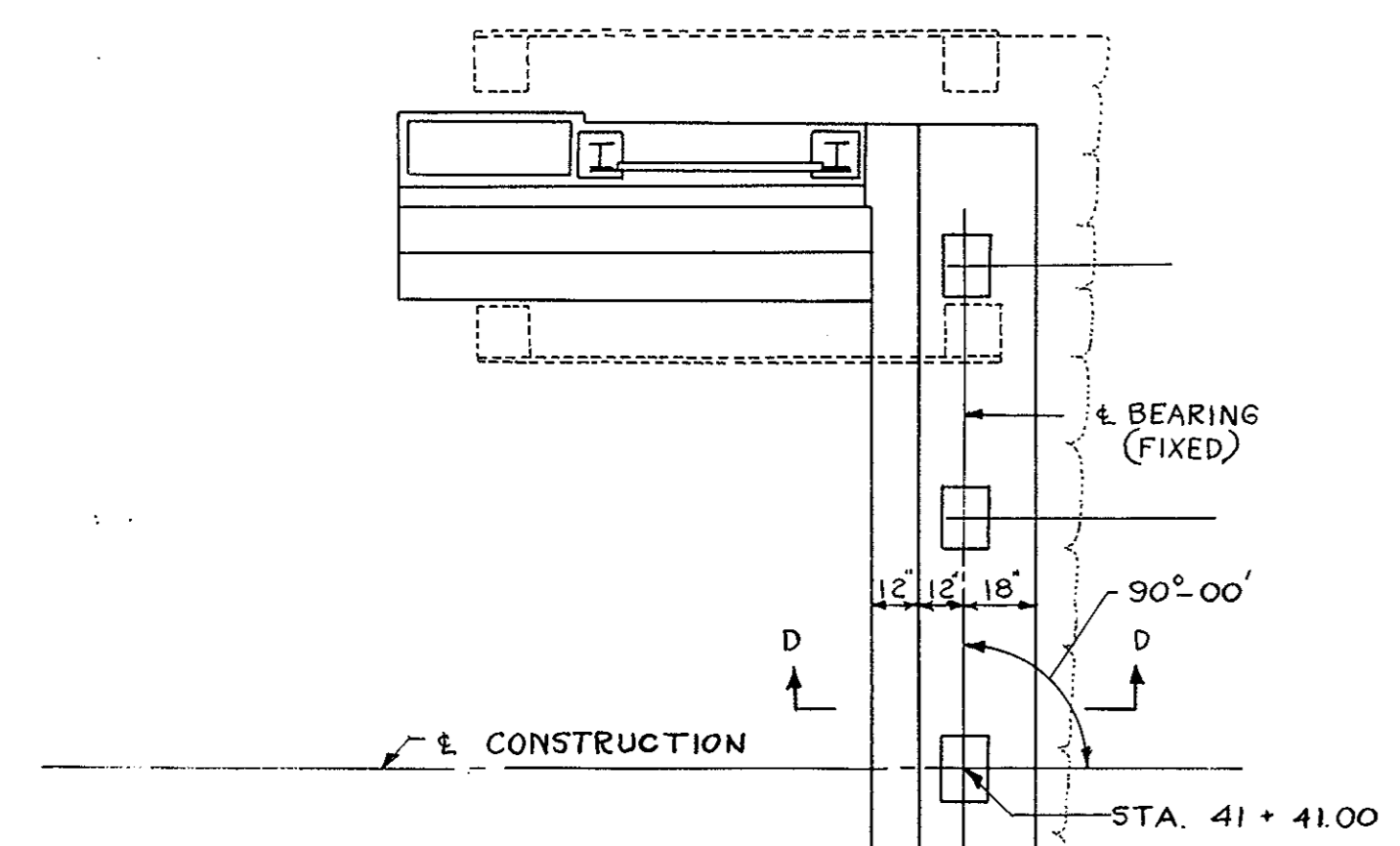


TYPICAL SPLICE FOR 36 WF 194  
SCALE: 3/4" = 1'-0"  
NOTE: THIS SPLICE MAY BE OMITTED IF LONG STRINGERS ARE AVAILABLE.  
SPLICE TO BE LOCATED NOT MORE THAN 30'-0" FROM 1/2 BEARING.  
NO MORE THAN ONE SPLICE PER STRINGER.

DATE	DESCRIPTION
11-26-49	CONSTRUCTION
11-26-49	ADVERTISING
DATE	DESCRIPTION
USE ONLY PRINTS OF LATEST DATE	

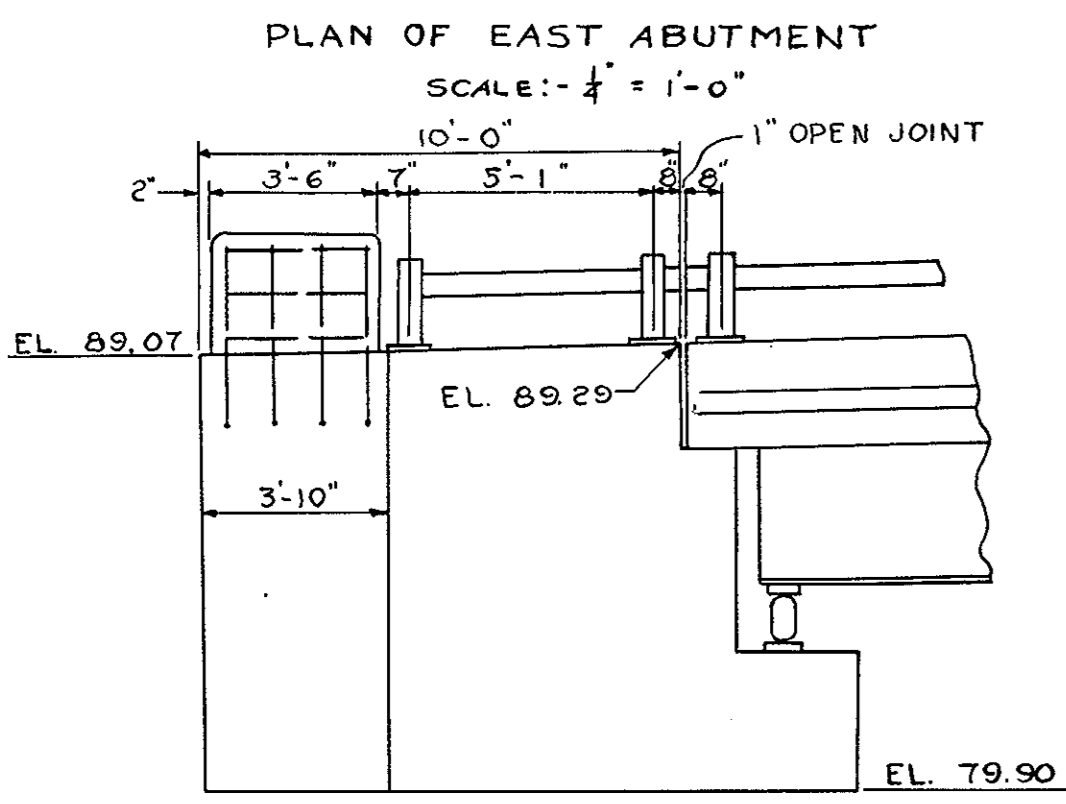


PUB. ROAD DIV. NO.	STATE	FED. AID PROJ. NO.	FISCAL YEAR	SHEET NO.	TOTAL SHEETS
1	MASS	FAR 88(0)	1949	8	24

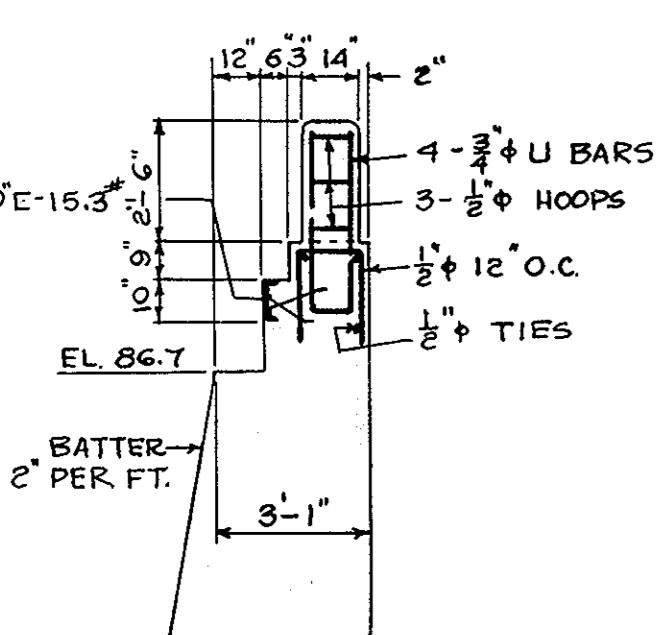


NOTE: WEST ABUTMENT TO BE THE SAME AS EAST ABUTMENT. ALL ABUTMENT AND WING CONCRETE TO BE CLASS 'A'

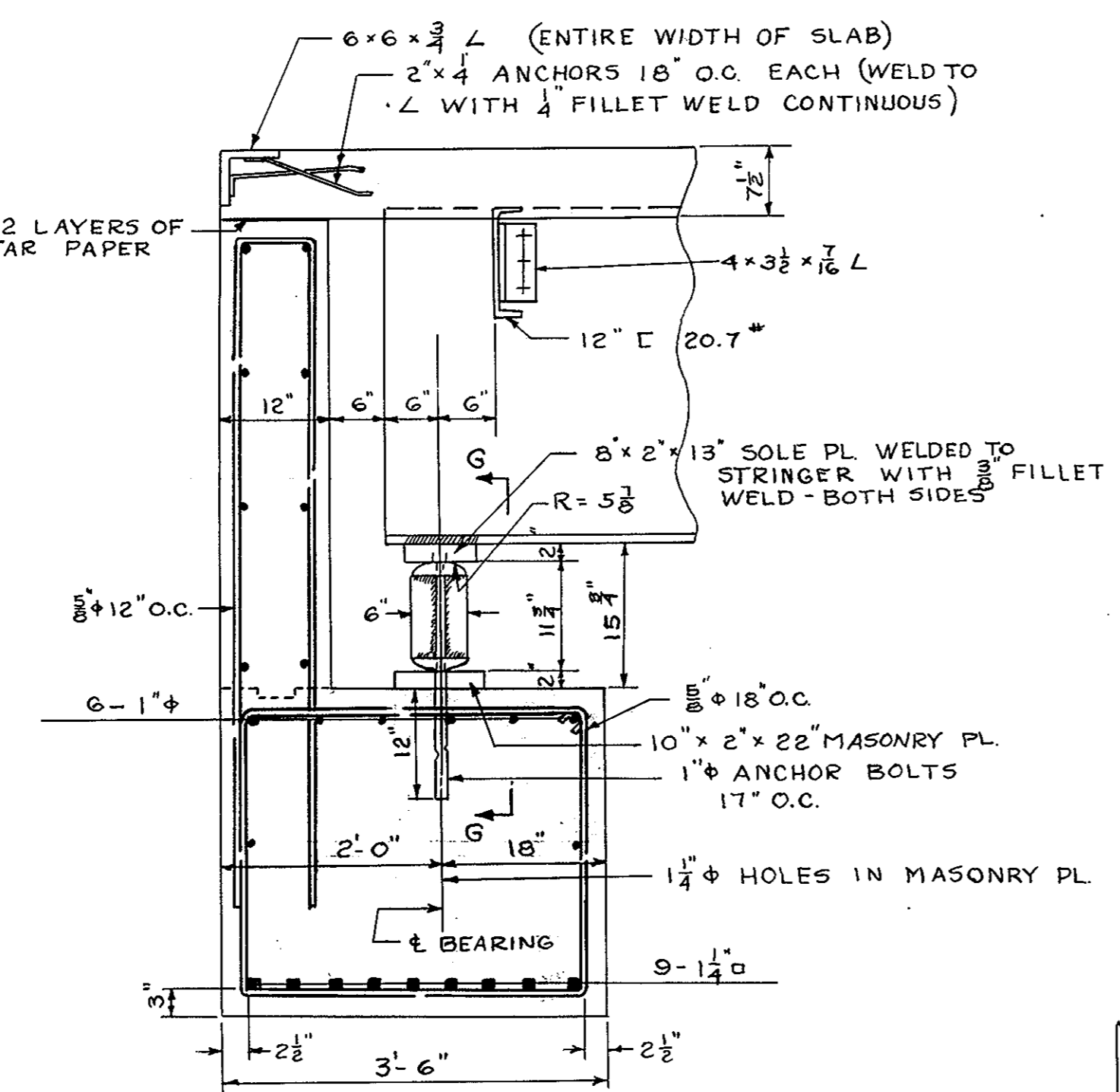
ELEVATION OF EAST ABUTMENT  
SCALE: 1/4" = 1'-0"



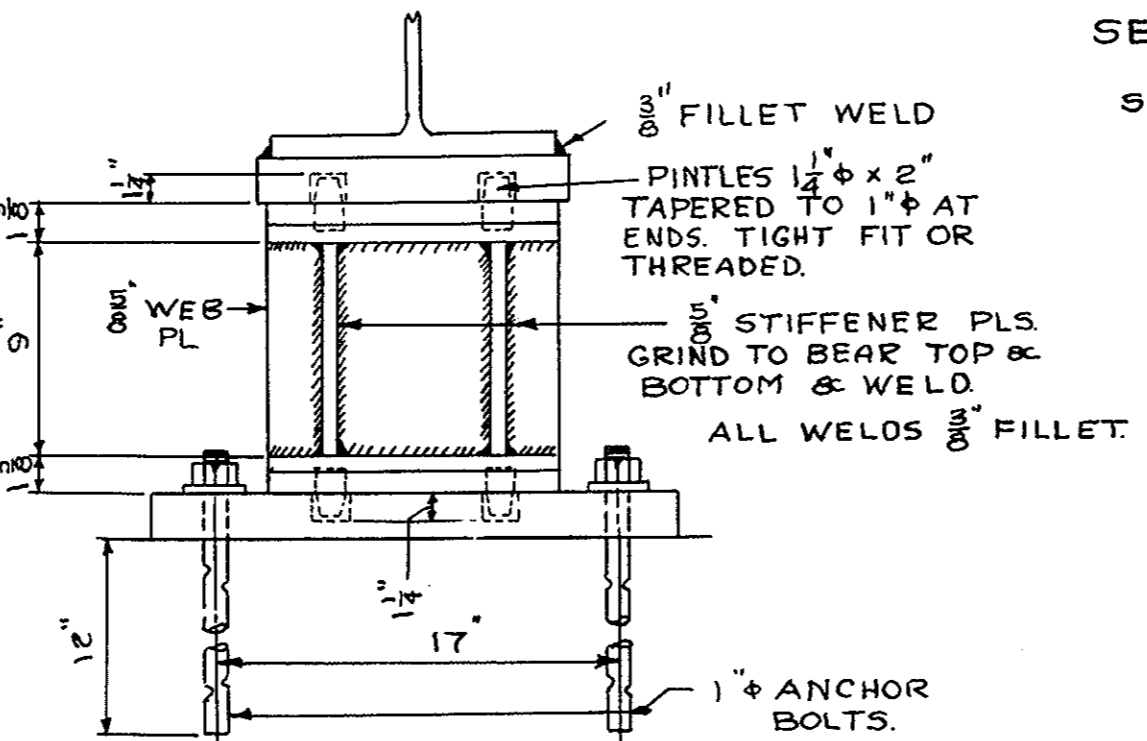
PLAN OF EAST ABUTMENT  
SCALE: 1/4" = 1'-0"



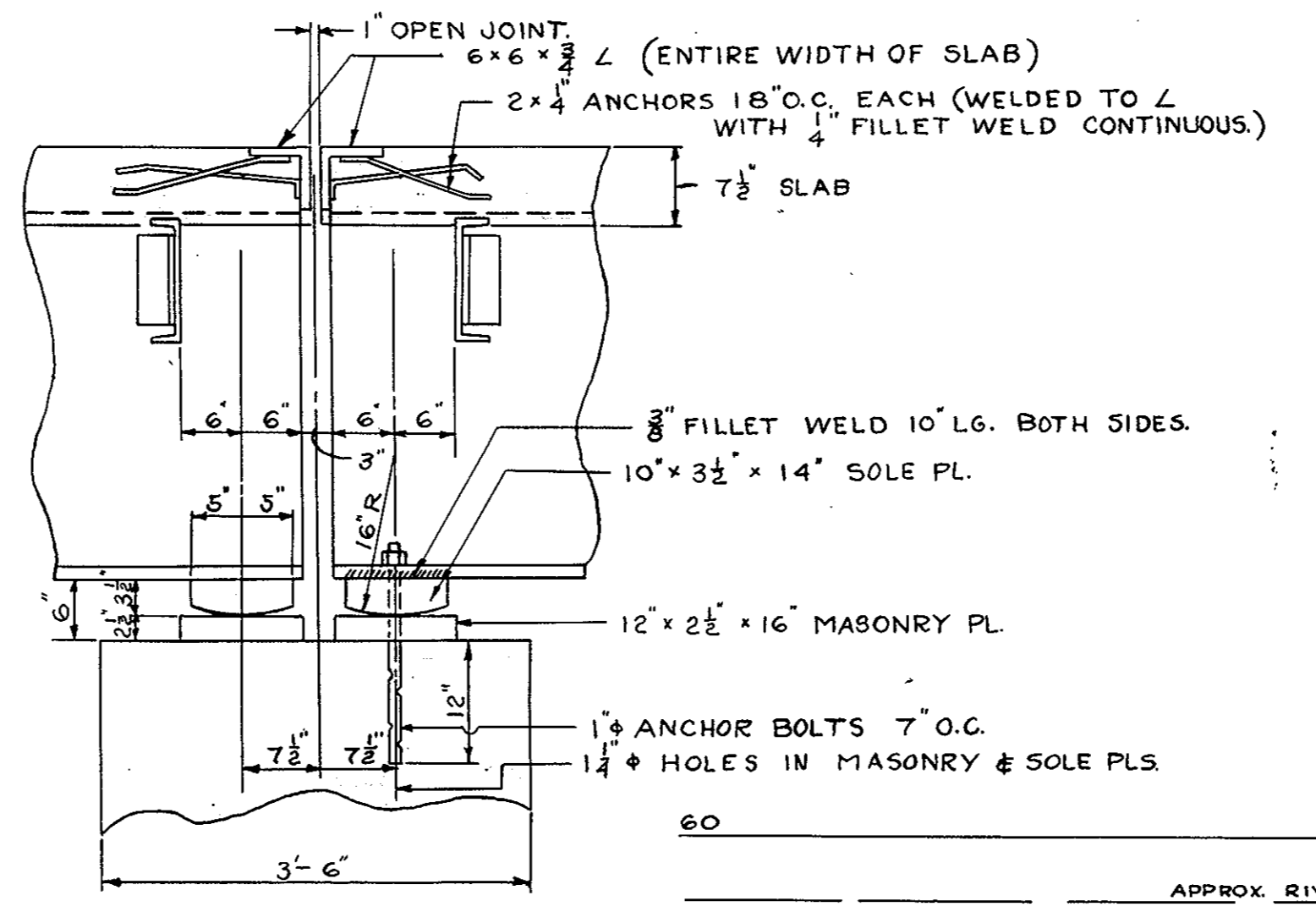
SECTION E-E  
SCALE: 1/4" = 1'-0"



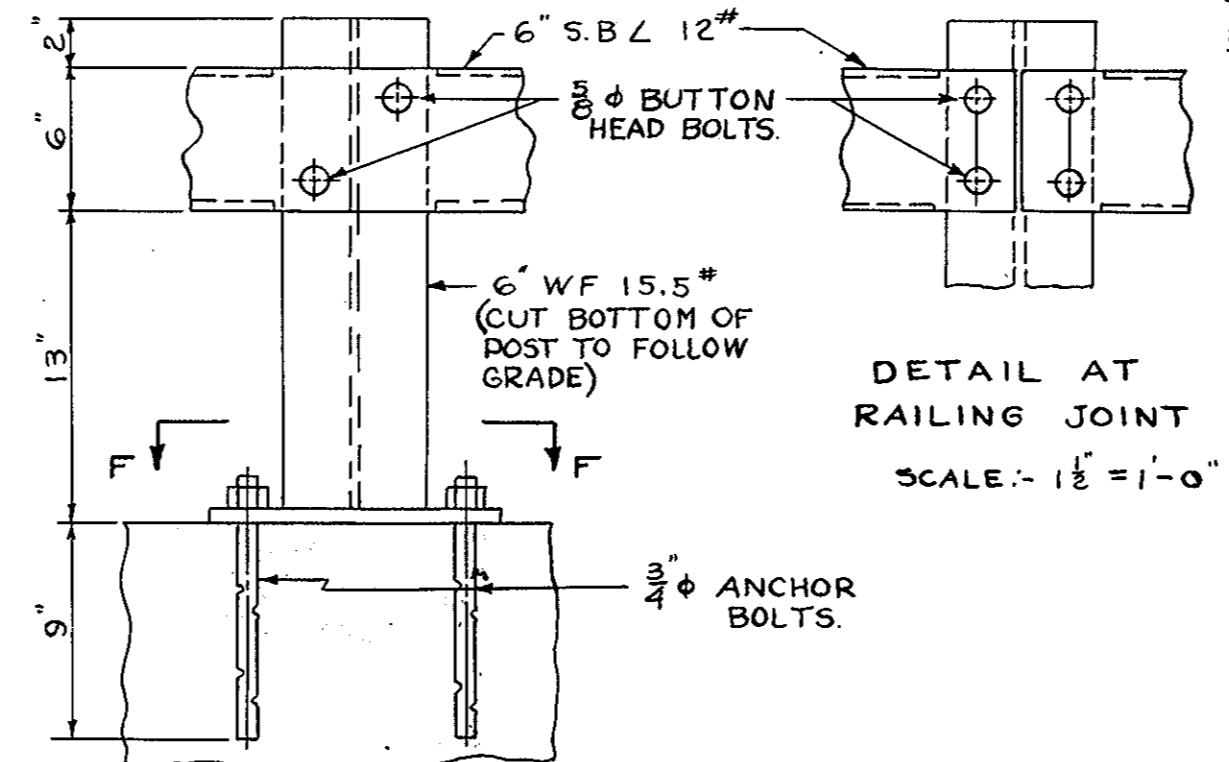
SECTION D-D  
SCALE: 1/4" = 1'-0"



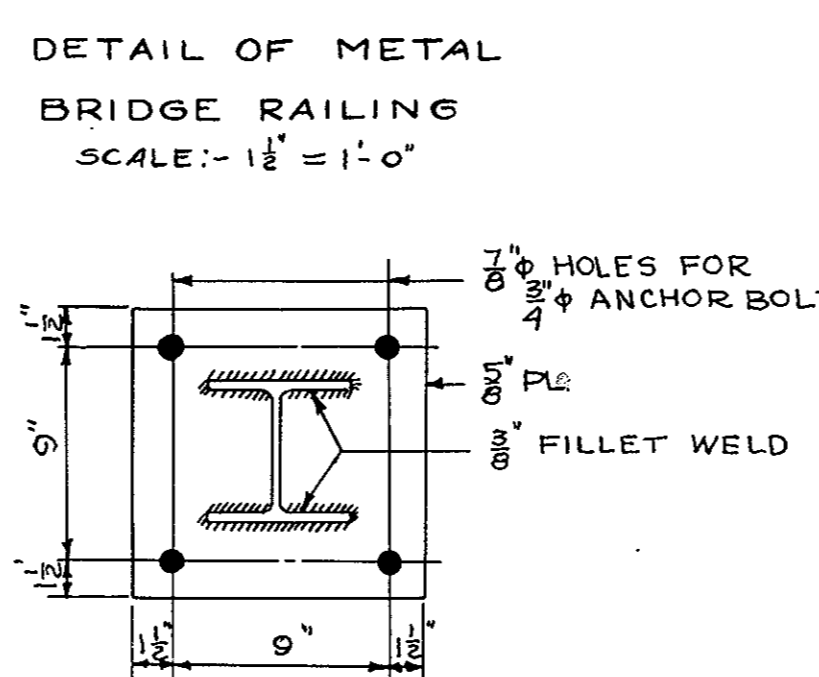
SECTION G-G  
SCALE: 1/2" = 1'-0"  
(TYPICAL EXPANSION BEARING)



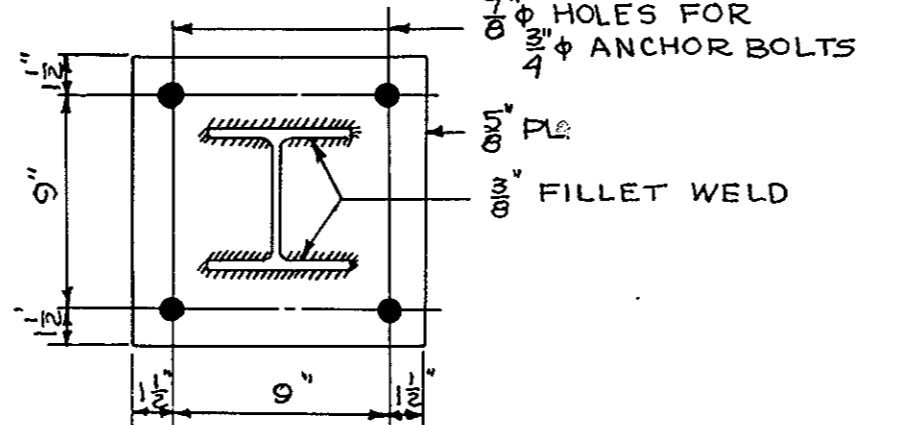
TYPICAL LONGITUDINAL SECTION THRU PIER (TYPICAL FIXED BEARING)  
SCALE: 1/2" = 1'-0"



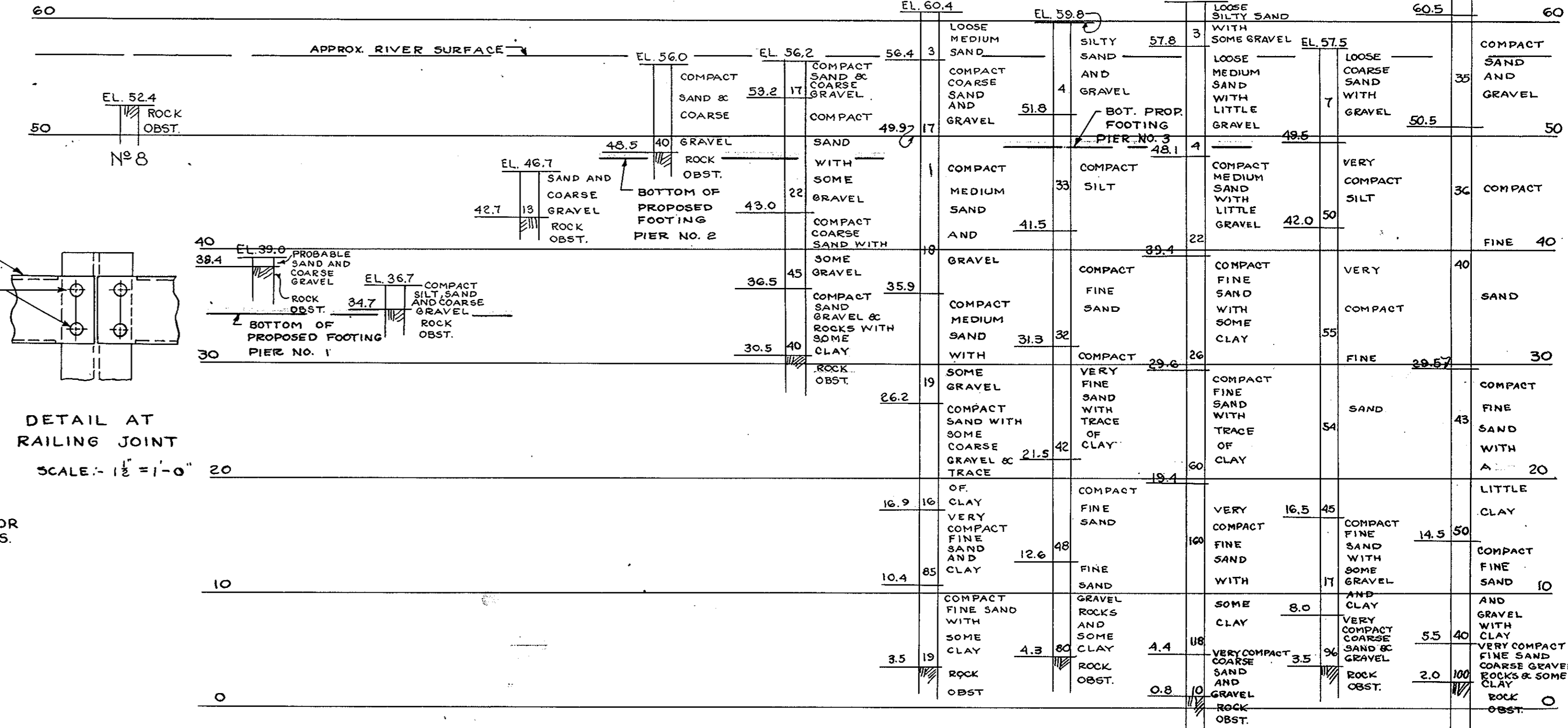
DETAIL AT RAILING JOINT  
SCALE: 1/2" = 1'-0"



DETAIL OF METAL BRIDGE RAILING  
SCALE: 1/2" = 1'-0"



SECTION F-F  
SCALE: 1/2" = 1'-0"



BORING DATA  
SCALE: 1" = 8'-0"  
BORINGS TAKEN AUGUST 1949

BORING NOTES  
LOCATION OF BORINGS SHOWN ON KEY PLAN THUS @ NO. 1  
BORINGS TAKEN FOR PURPOSE OF DESIGN AND SHOW CONDITIONS AT BORING POINTS ONLY BUT DO NOT NECESSARILY SHOW NATURE OF MATERIAL TO BE ENCOUNTERED IN CONNECTION WITH THE CONSTRUCTION OF THE BRIDGE  
FIGURES IN COLUMNS INDICATE BLOWS PER FOOT ON 1" PIPE PRODUCED BY 24" FALL OF 140# HAMMER  
SAMPLES FROM BORINGS MAY BE SEEN AT THE OFFICE OF THE BRIDGE ENGINEER, MR. R.O. SPOFFORD, ROOM 609

ARRANGEMENT OF DATE & SEAL  
SCALE: 3/4" = 1'-0"

11-26-49	CONSTRUCTION
11-26-49	ADVERTISING
D.S.T.	DESCRIPTION
USE ONLY PRINTS OF LATEST DATE	